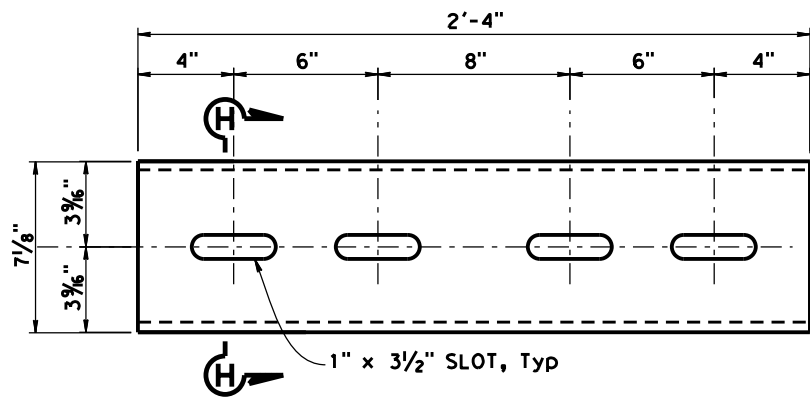
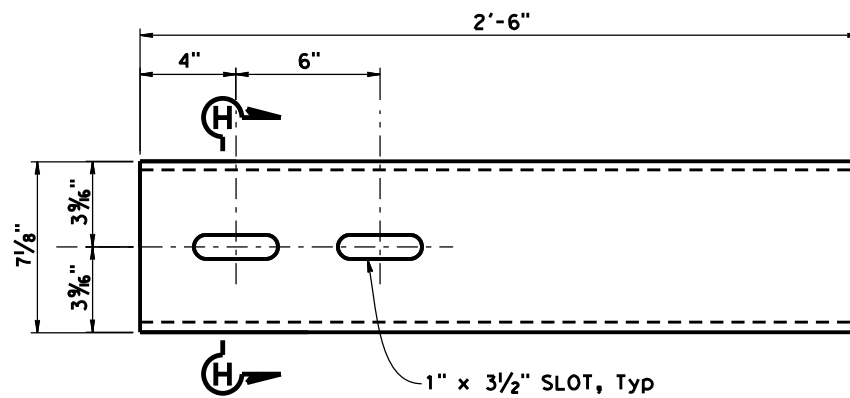


Dist	COUNTY	ROUTE	POST MILES TOTAL PROJECT	SHEET No.	TOTAL SHEETS
DDDD	CCCC	RRRR	PPPP	????	####
REGISTERED CIVIL ENGINEER			X	DATE	
MM/DD/YYYY					
PLANS APPROVAL DATE					
THE STATE OF CALIFORNIA OR ITS OFFICERS OR AGENTS SHALL NOT BE RESPONSIBLE FOR THE ACCURACY OR COMPLETENESS OF SCANNED COPIES OF THIS PLAN SHEET.					
THE REGISTERED CIVIL ENGINEER FOR THE PROJECT IS RESPONSIBLE FOR THE SELECTION AND PROPER APPLICATION OF THE COMPONENT DESIGN AND ANY MODIFICATIONS SHOWN.					



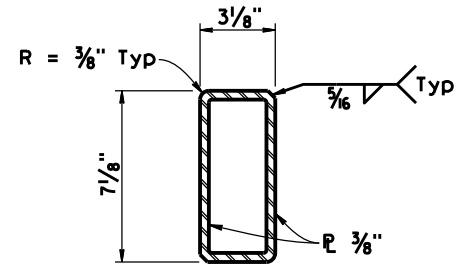
STANDARD SLEEVE DETAIL

(FOR HSS 8 X 4 X 5/16 RAIL)

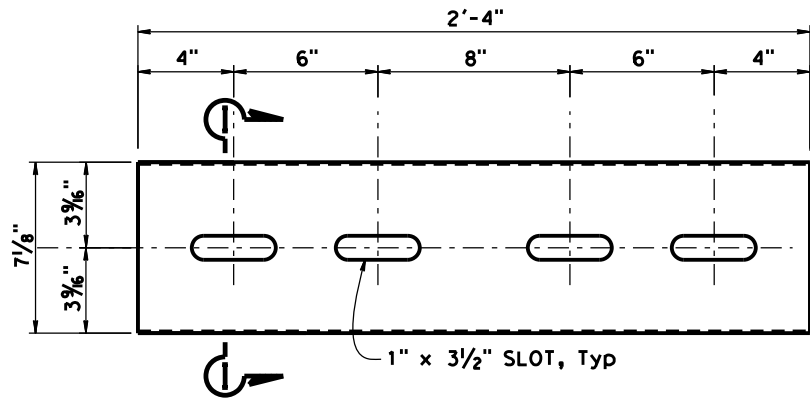


EXPANSION SLEEVE DETAIL

(FOR HSS 8 X 4 X 5/16 RAIL)

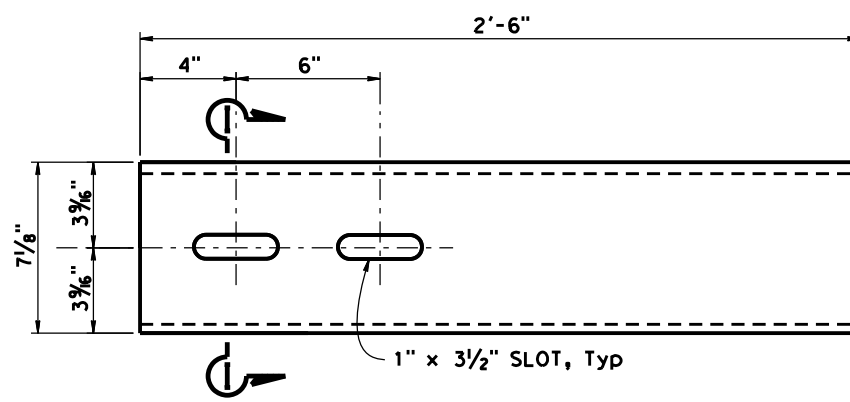


SECTION H-H



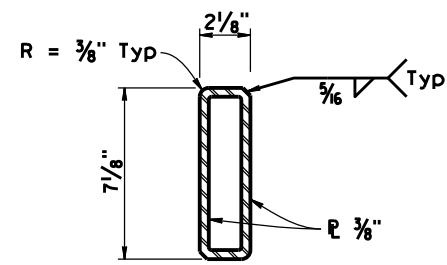
STANDARD SLEEVE DETAIL

(FOR HSS 8 X 3 X 5/16 RAIL)



EXPANSION SLEEVE DETAIL

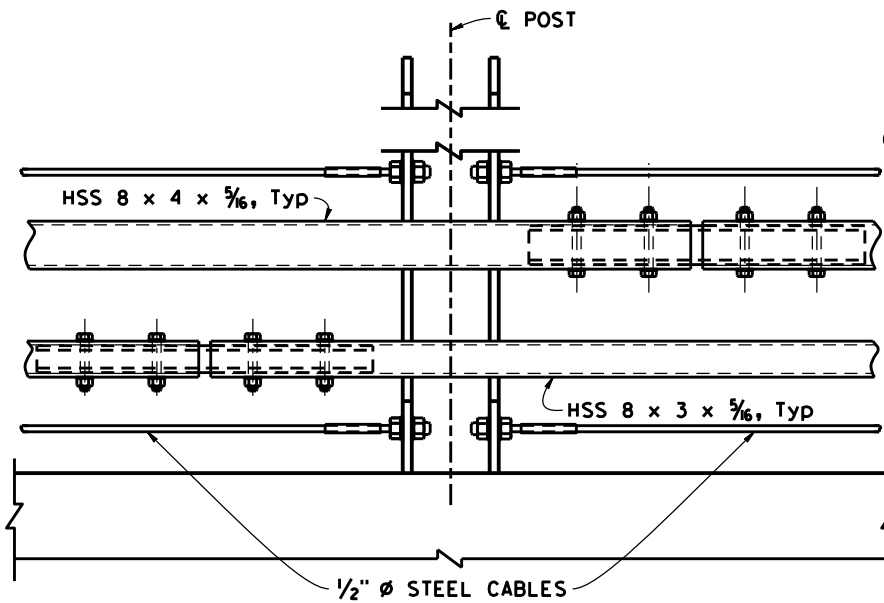
(FOR HSS 8 X 3 X 5/16 RAIL)



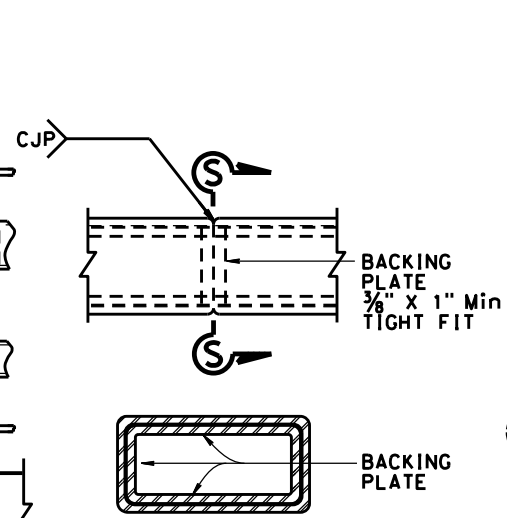
SECTION I-I

NOTES:

- All steel members are ASTM A1085 unless otherwise noted.
- All steel members and connectors shall be galvanized unless otherwise noted.
- All welding details shall conform to AWS D1.1.
- Each rail length shall be continuous over a minimum of two posts.
- The contractor shall check that the tubular sleeve splices conform to the dimensions indicated to assure proper clearance.
- Except for expansion splices, not more than one splice shall be permitted per same side of post.
- Bolts with nut and washers to be snug tightened, unless noted. Thread locking system must be applied at all bolted connections.

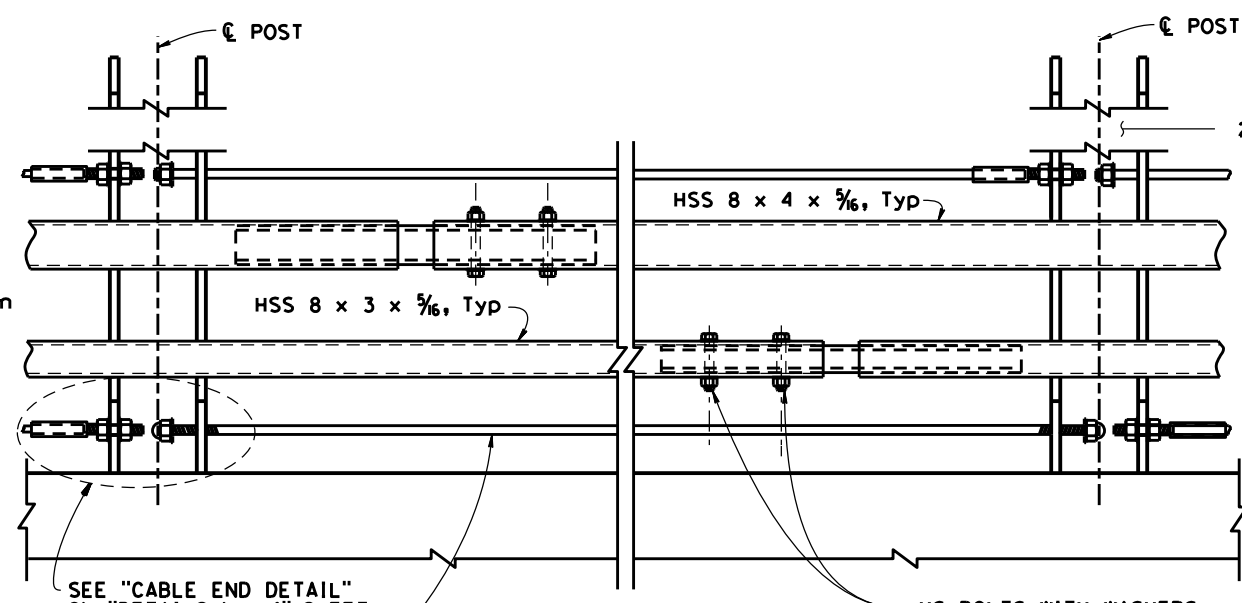


STANDARD SPLICE



SECTION S-S

ALTERNATE TUBE WELDED STANDARD SPLICE



EXPANSION SPLICE

* MATCH DECK OR WALL JOINT

HS BOLTS WITH WASHERS, SNUG TIGHTENED, Typ
Use 3/4" ϕ x 5/4 (HSS 8 x 4 x 5/16)
Use 3/4" ϕ x 4/4 (HSS 8 x 3 x 5/16)

2 RAILS ARE NOT SHOWN FOR CLARITY

NO SCALE