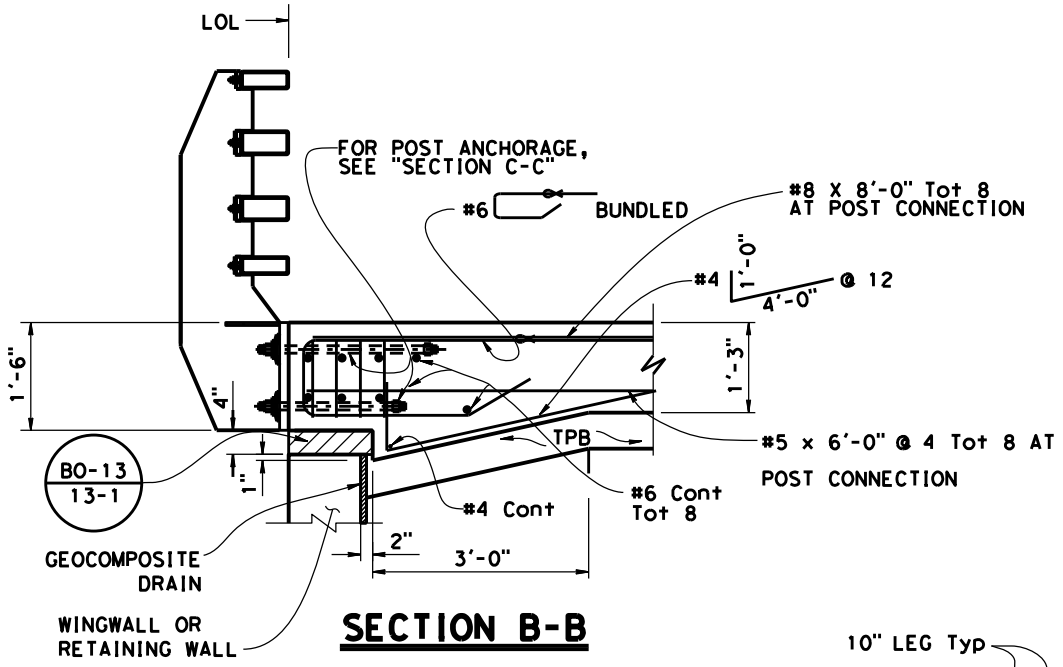
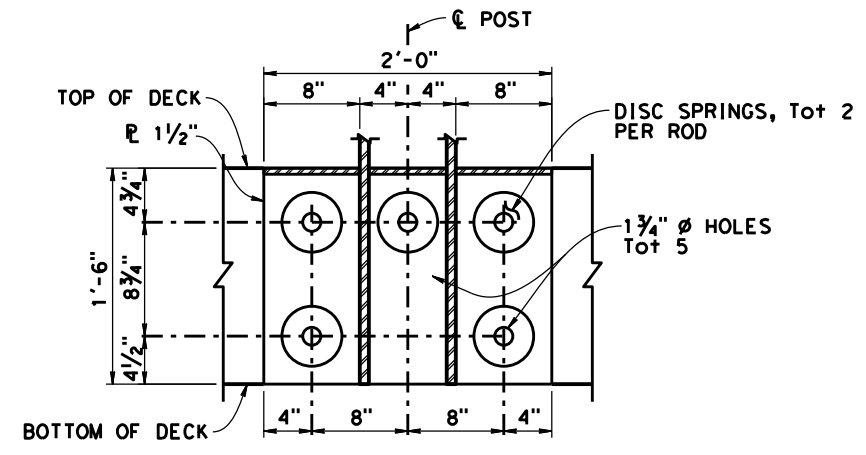


Dist	COUNTY	ROUTE	POST MILES TOTAL PROJECT	SHEET No.	TOTAL SHEETS
DDDD	CCCC	RRRR	PPPP	????	####

REGISTERED CIVIL ENGINEER X DATE _____
 PLANS APPROVAL DATE _____
 MM/DD/YYYY
 THE STATE OF CALIFORNIA OR ITS OFFICERS OR AGENTS SHALL NOT BE RESPONSIBLE FOR THE ACCURACY OR COMPLETENESS OF SCANNED COPIES OF THIS PLAN SHEET.
 THE REGISTERED CIVIL ENGINEER FOR THE PROJECT IS RESPONSIBLE FOR THE SELECTION AND PROPER APPLICATION OF THE COMPONENT DESIGN AND ANY MODIFICATIONS SHOWN.



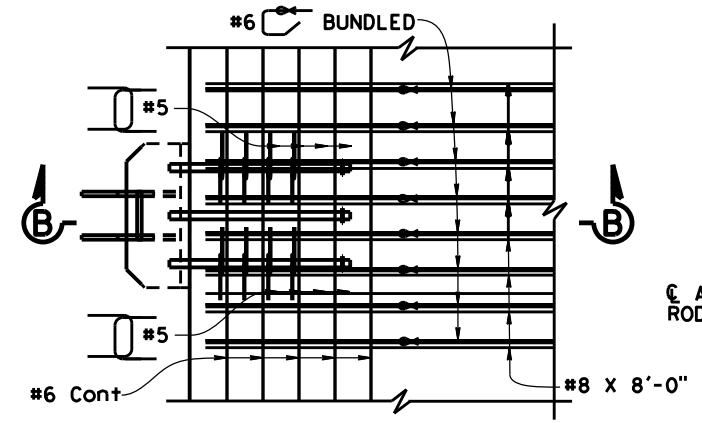
SECTION B-B



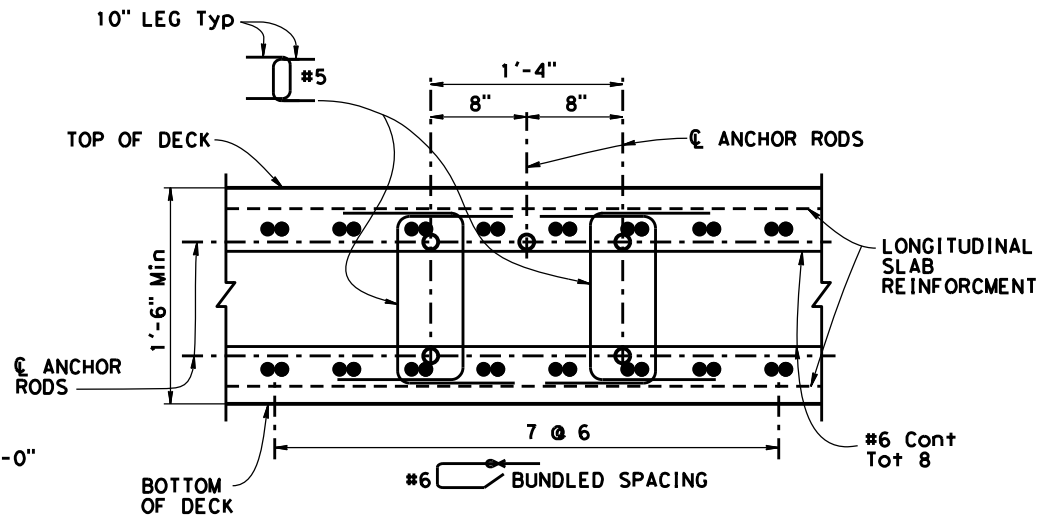
SECTION D-D

NOTES:

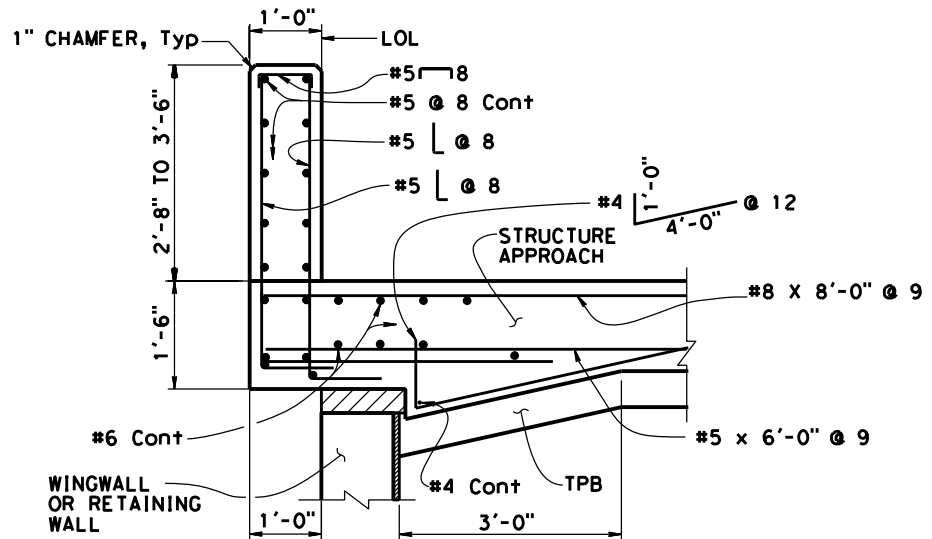
1. Not all deck reinforcement is shown for clarity. See "PROJECT PLANS".
2. Transverse deck and approach slab reinforcement to be continuous into anchorage block.
3. Rail surface must have full contact with railing post. Galvanized shim plates as needed must be approved by the engineer.
4. For deck thickness less than 1'-6", bottom transverse deck reinforcement must be adjusted to avoid anchorage block.
5. Bolts with nut and washers to be snug tightened, unless noted. Thread locking system must be applied at all bolted connections.
6. For approach slab details, see "STANDARDS PLANS". Approach slab reinforcement is not shown for clarity.



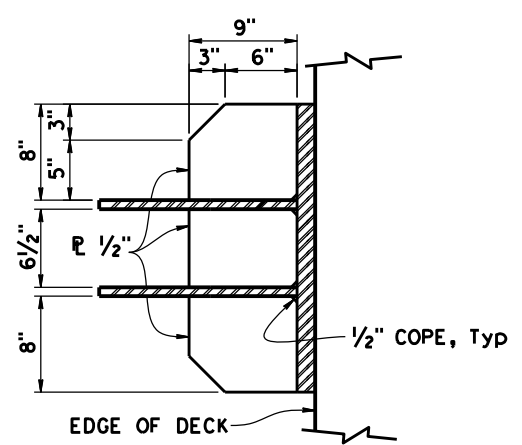
PART PLAN STRUCTURE APPROACH
(ONLY TOP MAT SHOWN FOR CLARITY)



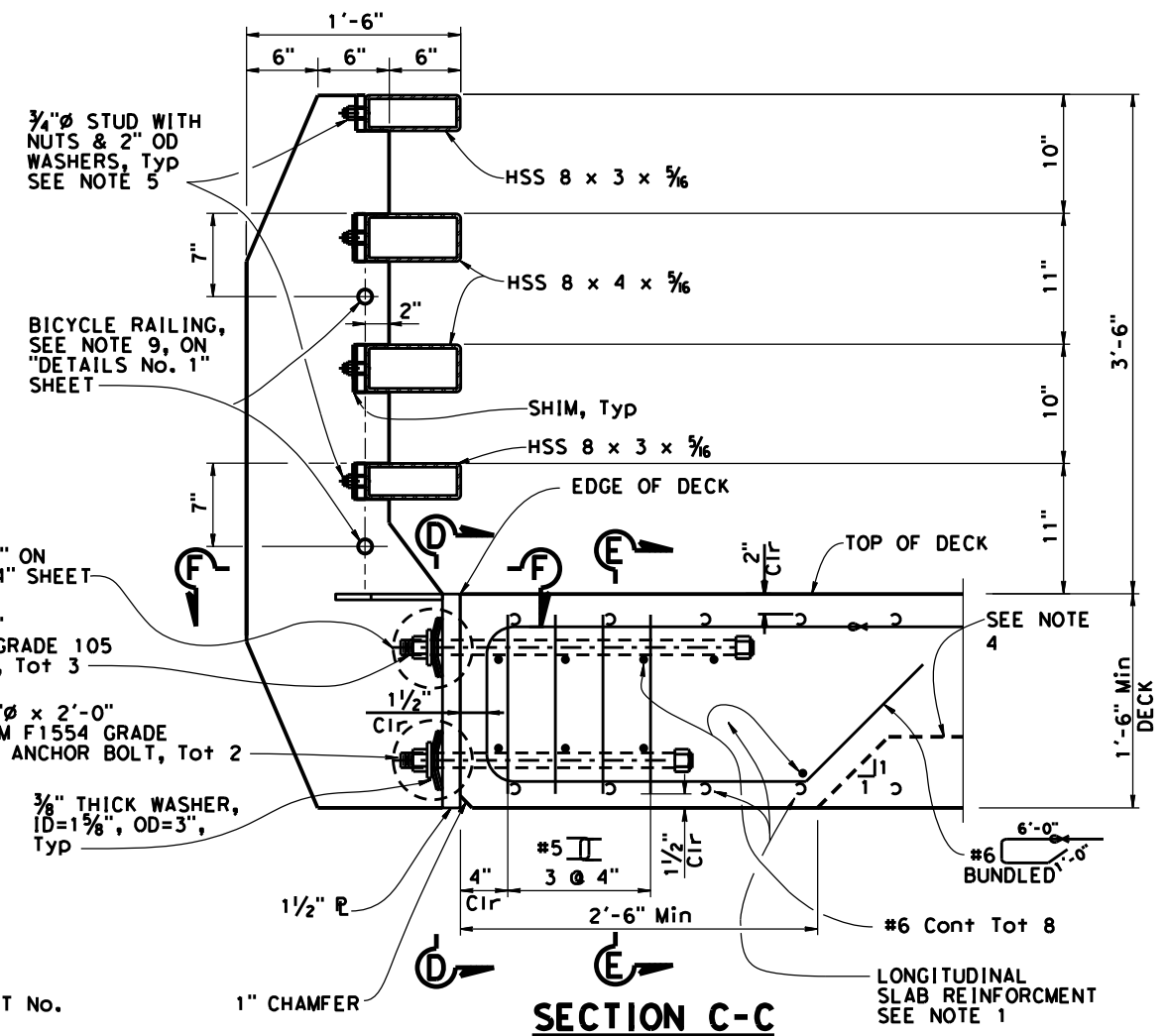
SECTION E-E



SECTION A-A



SECTION F-F



SECTION C-C

NO SCALE

STANDARD PLAN SHEET No. _____
 DETAIL No. _____