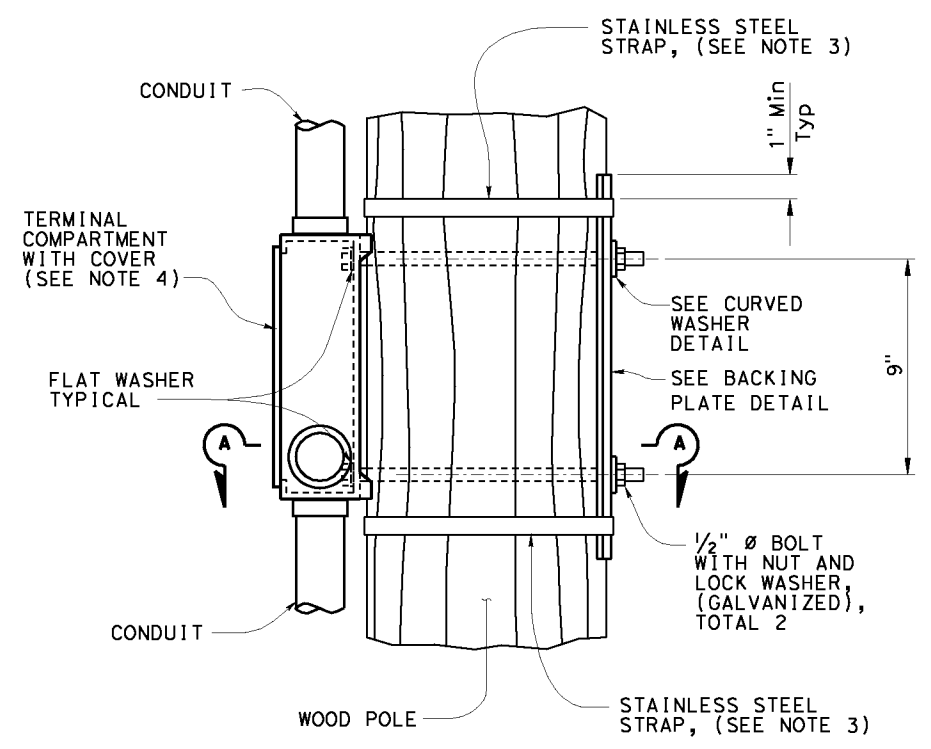


DIST	COUNTY	ROUTE	POST MILES TOTAL PROJECT	SHEET No.	TOTAL SHEETS
X	X	X	X	X	X

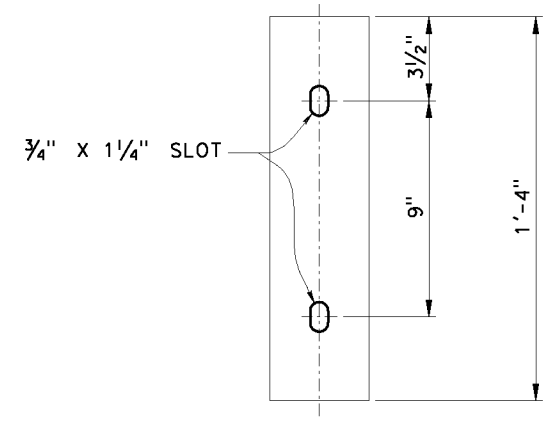
REGISTERED CIVIL ENGINEER	X	DATE
PLANS APPROVAL DATE		

REGISTERED PROFESSIONAL ENGINEER
No. X
Exp. X
CIVIL
STATE OF CALIFORNIA

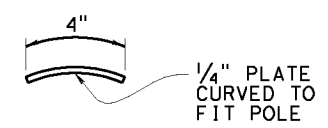
The State of California or its officers or agents shall not be responsible for the accuracy or completeness of electronic copies of this plan sheet.



ELEVATION
3" = 1'-0"

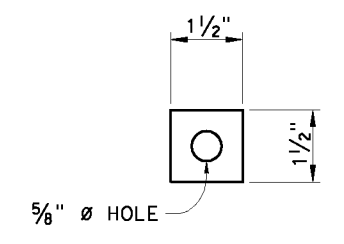


ELEVATION

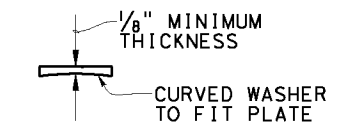


PLAN

**BACKING PLATE
DETAIL**
3" = 1'-0"



ELEVATION

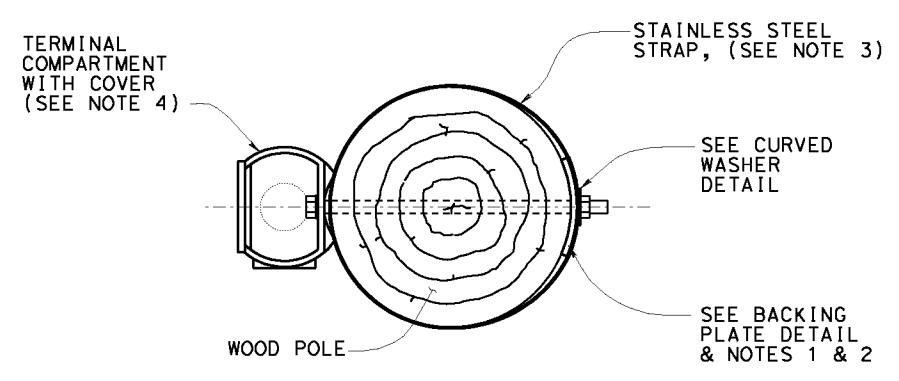


PLAN

**CURVED WASHER
DETAIL**
6" = 1'-0"

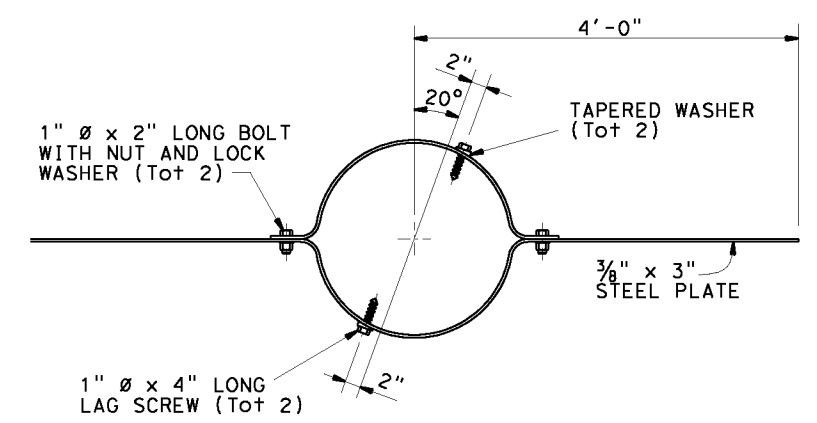
NOTES:

1. The contractor to verify pole dimensions at terminal compartment for fabrication of backing plate and curved washer.
2. Backing plate to be galvanized after fabrication.
3. 3/4" x 0.044" minimum, rounded edge stainless steel straps, double wrapped with 2" long bend under stainless steel strap buckle.
4. For details not shown see STANDARD PLAN ES-4D.



SECTION A-A
3" = 1'-0"

**SIDE MOUNTING
TERMINAL COMPARTMENT**
For Details Not Shown See RSP-ES-4D Sheet



WIND ANCHOR

To be installed perpendicular to mast arms and 2'-0" Min below grade

NOTE:
THE CONTRACTOR SHALL VERIFY ALL CONTROLLING FIELD DIMENSIONS BEFORE ORDERING OR FABRICATING ANY MATERIAL.

STANDARD DRAWING		STATE OF CALIFORNIA DEPARTMENT OF TRANSPORTATION	DIVISION OF ENGINEERING SERVICES	BRIDGE NO. X	TEMPORARY WOOD POLE DETAILS NO. 5	
FILE NO. xs18-080-5	APPROVAL DATE <u>December 2011</u>			POST MILE X		
DS OSD 2147A (ENGLISH STANDARD DRAWING "XS" BORDER REV. [02-02-11])		ORIGINAL SCALE IN INCHES FOR REDUCED PLANS		UNIT: X PROJECT NUMBER & PHASE: X	CONTRACT NO.: X	DISREGARD PRINTS BEARING EARLIER REVISION DATES
				REVISION DATES	SHEET	OF
				11/17/11	X	X

DATE PLOTTED => \$DATE USERNAME => \$USER