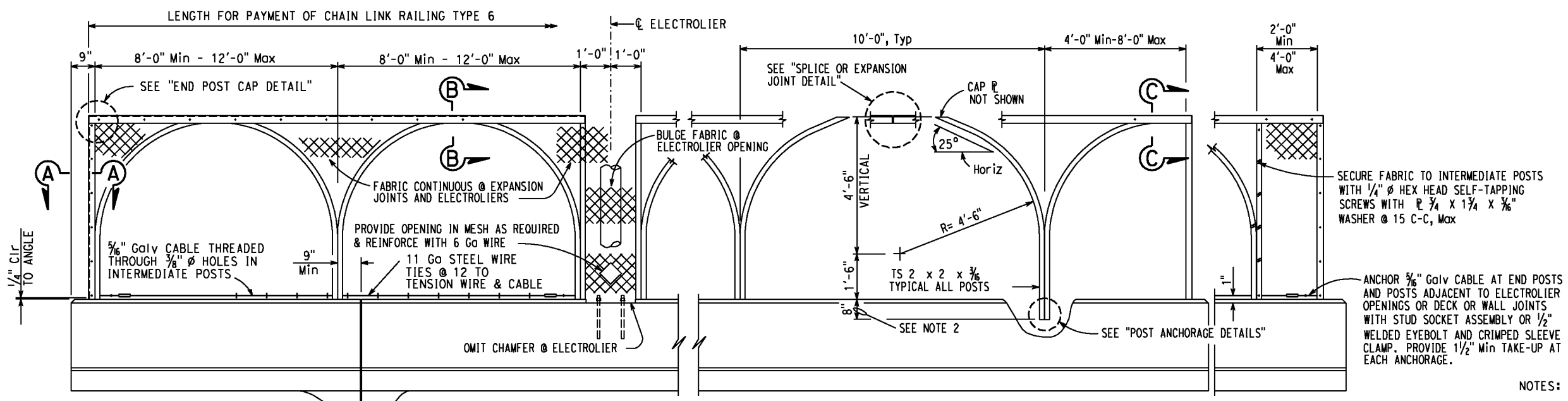


DIST	COUNTY	ROUTE	POST MILES TOTAL PROJECT	SHEET No.	TOTAL SHEETS
X	X	X	X	X	X

REGISTERED CIVIL ENGINEER	X	DATE
PLANS APPROVAL DATE		

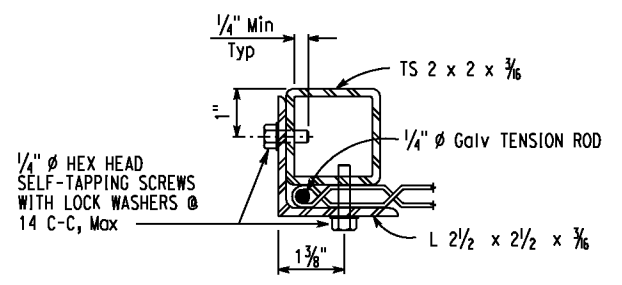
REGISTERED PROFESSIONAL ENGINEER	X
No.	X
Exp.	X
CIVIL	

The State of California or its officers or agents shall not be responsible for the accuracy or completeness of electronic copies of this plan sheet.

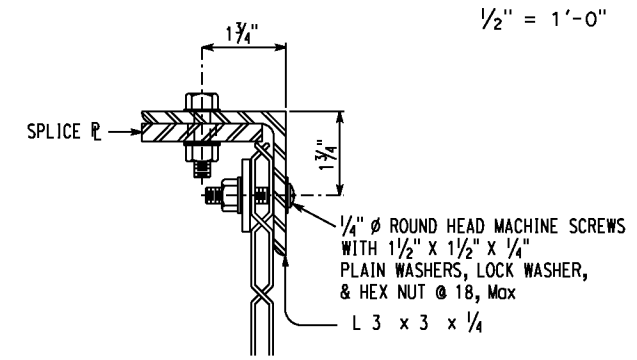


END PANEL 8'-0" - 12'-0"
EXPANSION PANEL
TYPICAL INTERIOR PANEL 4'-0" - 8'-0"
END PANEL 2'-0" - 4'-0"

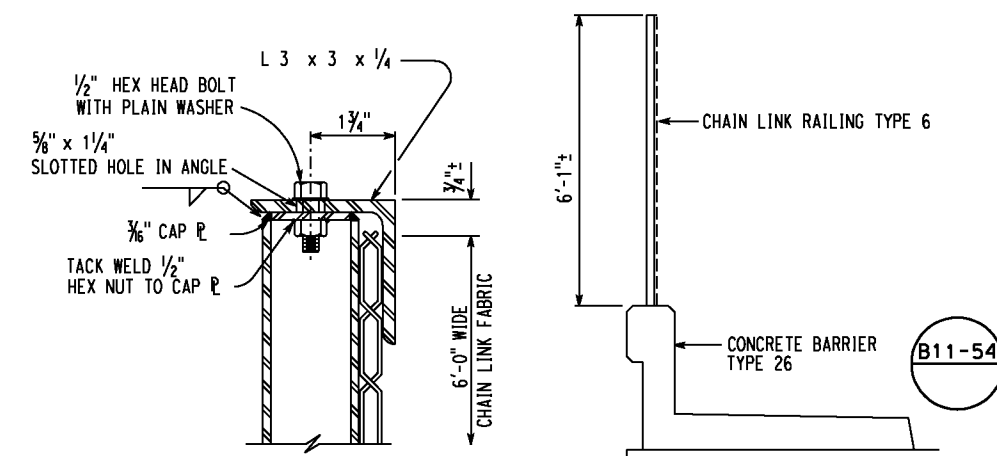
- NOTES:
- Horizontal angle shall be continuous over not less than two intermediate posts except that a shorter length is permitted at expansion joints, electroliers and other rail discontinuities.
 - One post may be embedded 6" minimum to accommodate grade changes, otherwise fabricate post lengths as required.
 - Curved posts may be rotated in plan within its post pocket to accommodate curved horizontal alignment.
 - Straight posts and straight portions of curved posts shall be installed normal to bridge profile grade.
 - Top horizontal angle shall be parallel to bridge profile grade and shall be shop bent to fit horizontal curves.
 - When railing is on slope, fabric shall be placed parallel to slope.
 - Alternative details may be submitted by Contractor for Engineer's approval.
 - For details and reinforcement not shown, see "CONCRETE BARRIER TYPE 26" sheet. (B11-54)
 - See Bridge Plans for limits of Chain Link Railing Type 6.
 - Provide thimbles at all cable loops.
 - Chain link fabric to be 6'-0" wide with 1" mesh and with knuckled selvage top and bottom.
 - When railing is placed on a horizontal alignment with a radius of 150'-0" or less, thread 5/8" cable through 3/8" Ø welded eye rods embedded 4" into the top of the concrete parapet and equally spaced to limit the middle ordinate distance between 5/8" cable and the curve to 1" maximum.
 - Splices and expansion joints shall be located at \bar{C} panel.
 - Holes in posts for 5/8" cable and its anchorage may be field drilled and painted with zinc rich paint.



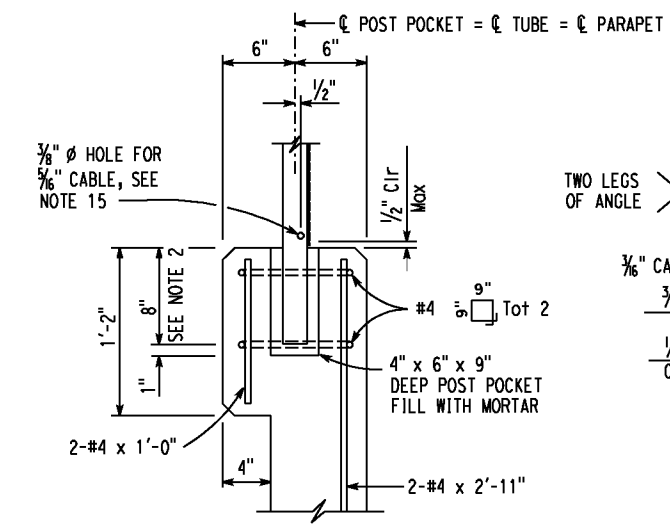
SECTION A-A
6" = 1'-0"



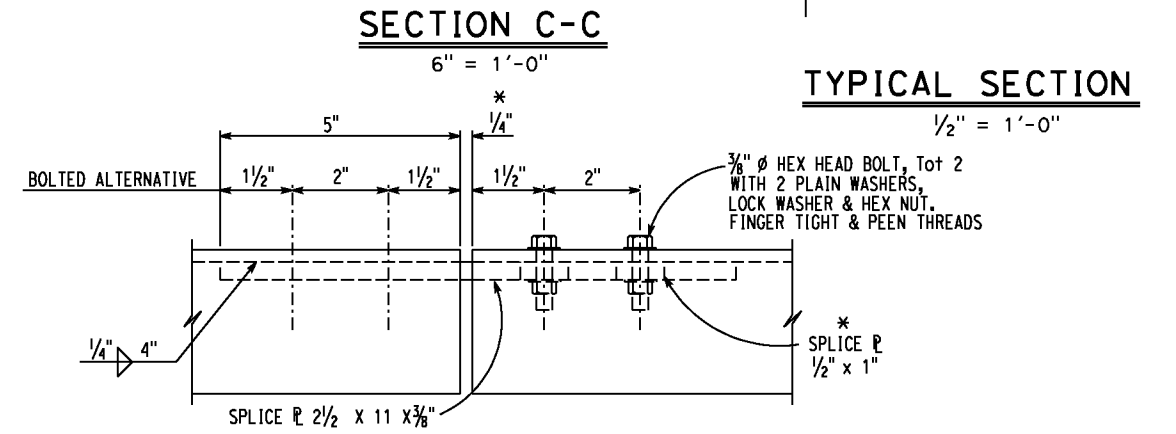
SECTION B-B
6" = 1'-0"



SECTION C-C
6" = 1'-0"



POST ANCHORAGE DETAIL
1 1/2" = 1'-0"



SPLICE OR EXPANSION JOINT DETAIL
6" = 1'-0"

* Expansion joint same dimension as expansion joint in deck or wall. Increase slotted hole length and splice PL length correspondingly.

NOTE:
THE CONTRACTOR SHALL VERIFY ALL CONTROLLING FIELD DIMENSIONS BEFORE ORDERING OR FABRICATING ANY MATERIAL.

STANDARD DRAWING	STATE OF CALIFORNIA DEPARTMENT OF TRANSPORTATION	DIVISION OF ENGINEERING SERVICES	BRIDGE NO. X	X
FILE NO. xs16-200	APPROVAL DATE July 2011	POST MILE X	POST MILE X	
CHAIN LINK RAILING TYPE 6			CONTRACT NO.: X	
DISREGARD PRINTS BEARING EARLIER REVISION DATES		REVISION DATES	SHEET	OF
			X	X

DS OSD 2147A (ENGLISH STANDARD DRAWING "XS" BORDER REV. [02-02-11]) ORIGINAL SCALE IN INCHES FOR REDUCED PLANS 0 1 2 3 UNIT: X PROJECT NUMBER & PHASE: X CONTRACT NO.: X DISREGARD PRINTS BEARING EARLIER REVISION DATES USERNAME => \$USER DATE PLOTTED => \$TIME