

DIST	COUNTY	ROUTE	POST MILES TOTAL PROJECT	SHEET No.	TOTAL SHEETS
X	X	X	X	X	X

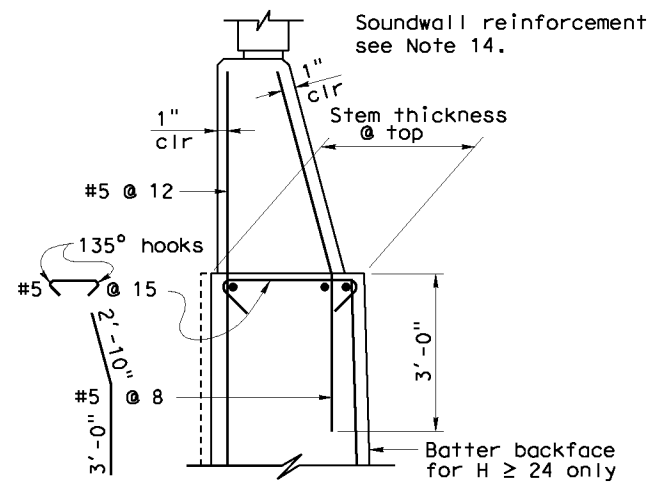
  

REGISTERED CIVIL ENGINEER	X	DATE	
PLANS APPROVAL DATE			

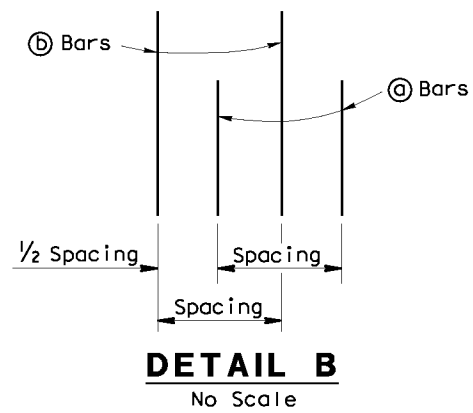
  

REGISTERED PROFESSIONAL ENGINEER	X
No.	X
Exp.	X
CIVIL	
STATE OF CALIFORNIA	

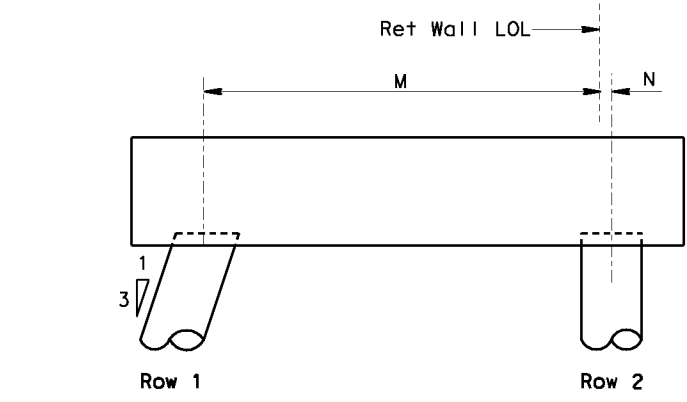
*The State of California or its officers or agents shall not be responsible for the accuracy or completeness of electronic copies of this plan sheet.*



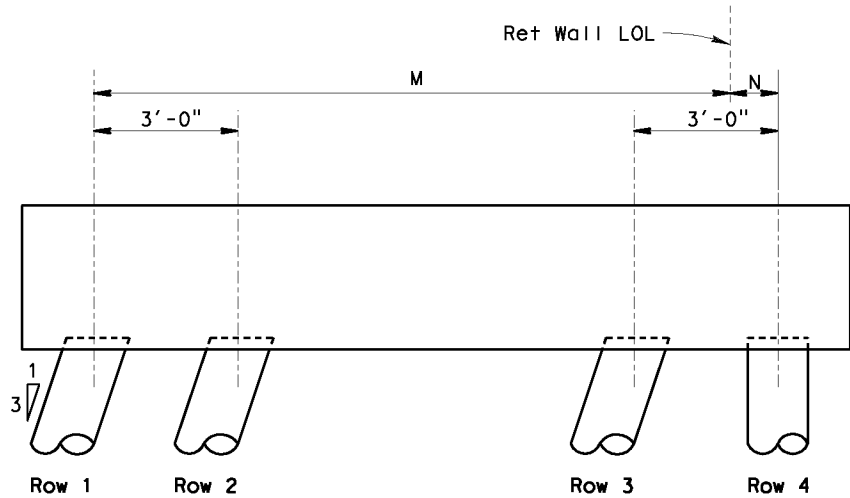
**DETAIL A  
WITHOUT HAUNCH**  
No Scale



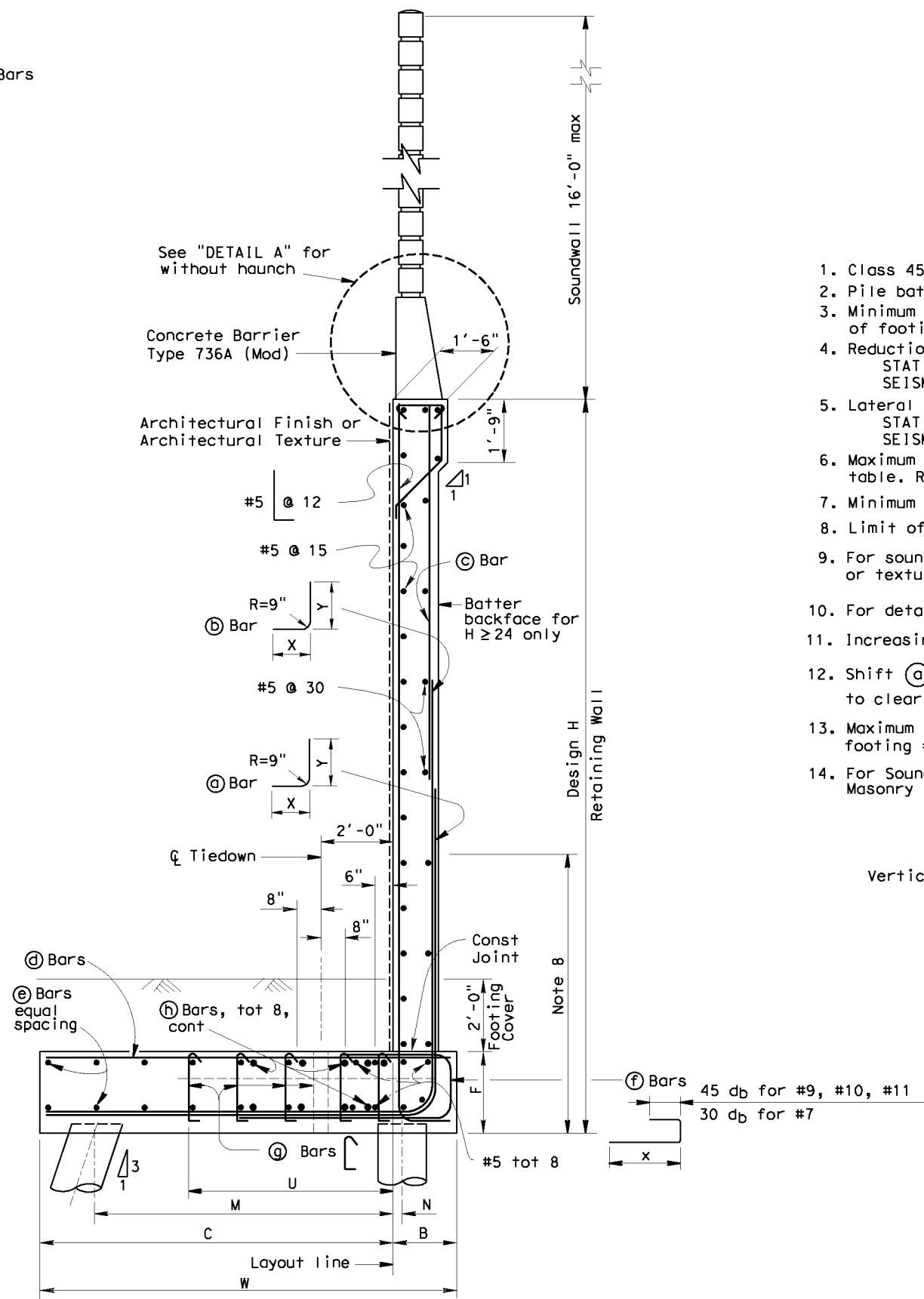
**DETAIL B**  
No Scale



**CONFIGURATION I**  
No Scale

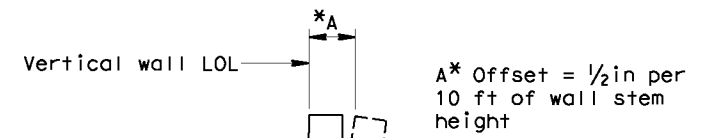


**CONFIGURATION II**  
No Scale



**PILE FOOTING SECTION**  
No Scale

- GENERAL NOTES**
- Class 45 Concrete Piles were used for the design.
  - Pile batter shown are 1:3.
  - Minimum distance between center of pile and edge of footing is 1'-6".
  - Reduction factors:  
STATIC:  $\phi = 0.75$   
SEISMIC:  $\phi = 1.0$
  - Lateral resistance of each pile:  
STATIC: = 30 kips  
SEISMIC: = 40 kips
  - Maximum spacing between piles is shown in the table. Reduce to suit the length of footing.
  - Minimum distance between any two piles is 3'-0".
  - Limit of no splicing for rebars = H/3.
  - For soundwall and retaining wall architectural finish or texture, see details elsewhere in project plans.
  - For details not shown and drainage notes, see (B3-8) sheet.
  - Increasing stem thickness not permitted.
  - Shift (a) bars, (b) bars, and (c) bars as required to clear formed hole for tiedown.
  - Maximum distance from tiedown to edge of footing = 0.4 (S).
  - For Soundwall & Barrier reinforcement, see "Soundwall Masonry Block" Sheets in Standard Plans.



**WALL OFFSET**  
No Scale

Values for offsetting forms to be determined by engineer

STANDARD DRAWING	
FILE NO. <b>xs14-410-2x</b>	APPROVAL DATE <u>July 2011</u>

STATE OF CALIFORNIA	
DEPARTMENT OF TRANSPORTATION	

DIVISION OF ENGINEERING SERVICES	
BRIDGE NO.	X
POST MILE	X

RETAINING WALL TYPE 7SWBP - DETAILS NO. 2	
BRIDGE NO.	X
POST MILE	X