

DESIGN DATA

DESIGN: AASHTO LRFD Bridge Design Specifications, 4th Edition with California Amendments.
 WS: 33 psf on sound wall
 F_t : 54 kips on barrier
 EOE: $k_h = 0.2$
 $k_v = 0.0$

REINFORCED CONCRETE: $f'_c = 3600$ psi
 $f_y = 60$ ksi
 $n = 8$

NOTES:

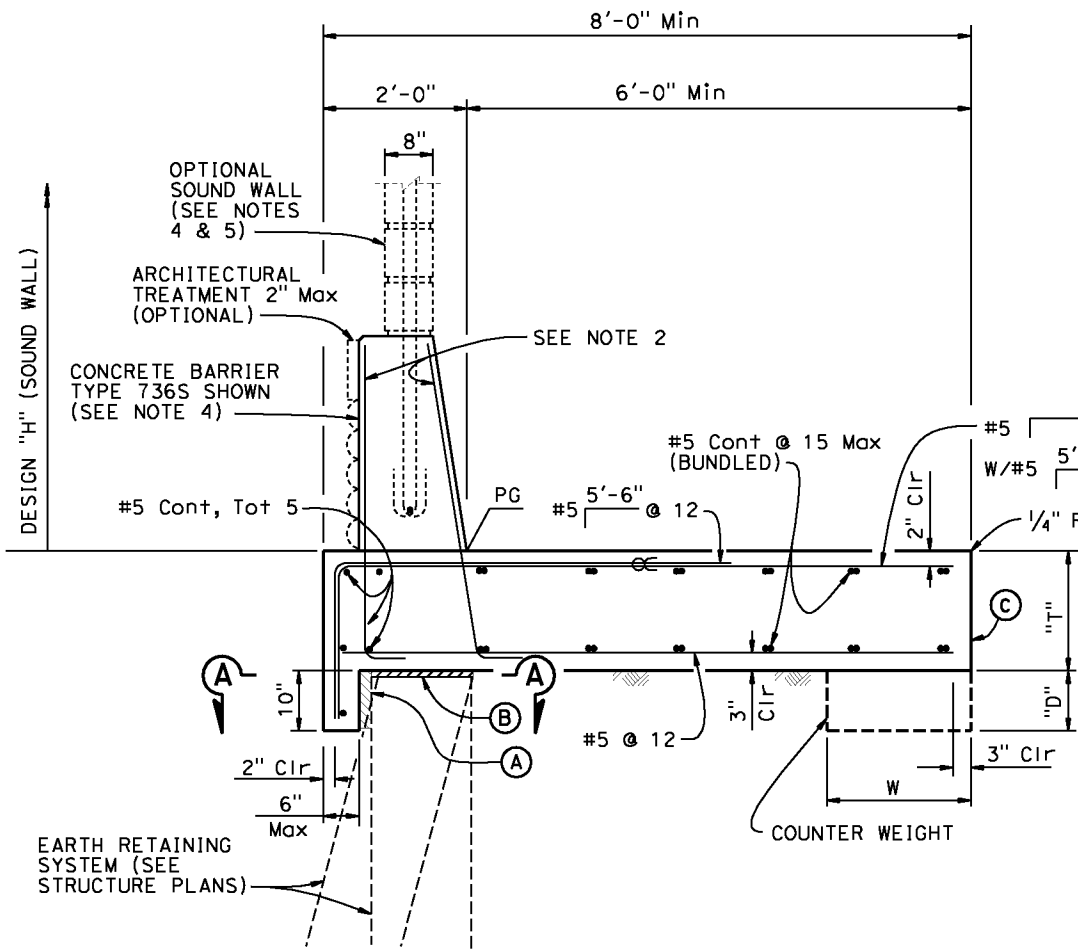
1. Clearance to reinforcing steel in concrete barrier to be 1".
2. Not all barrier reinforcement shown.
3. No expansion joints in concrete barrier or barrier slab within wall limits.
4. Specific concrete barrier to be used is shown elsewhere in Project Plans.
5. Sound Wall not permitted on MSE walls unless supported by a CIDH pile foundation. (See "Mechanically Stabilized Embankment Detail No. 5" sheet).
6. Install cable railing or chain link railing when indicated in Project Plans. Refer to Standard Plans B11-7 and B11-47 for anchorage details to top of concrete barrier.
7. Minimum slab length: 40 ft

| DIST | COUNTY | ROUTE | POST MILES TOTAL PROJECT | SHEET No. | TOTAL SHEETS |
|------|--------|-------|--------------------------|-----------|--------------|
| X | X | X | X | X | X |

REGISTERED CIVIL ENGINEER DATE: X

PLANS APPROVAL DATE: X

The State of California or its officers or agents shall not be responsible for the accuracy or completeness of electronic copies of this plan sheet.

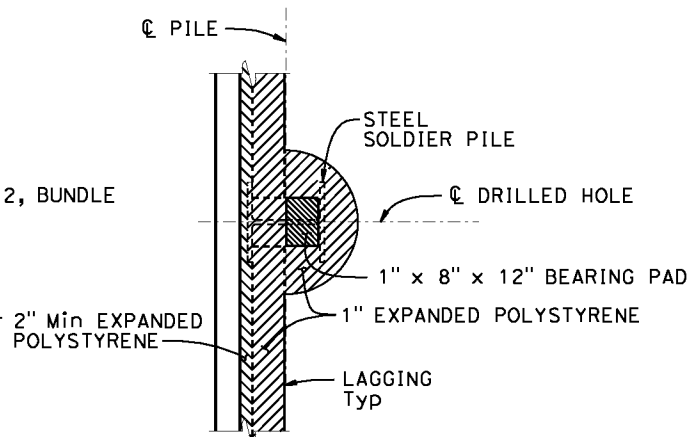


CONCRETE BARRIER SLAB

$\frac{3}{4}'' = 1'-0''$

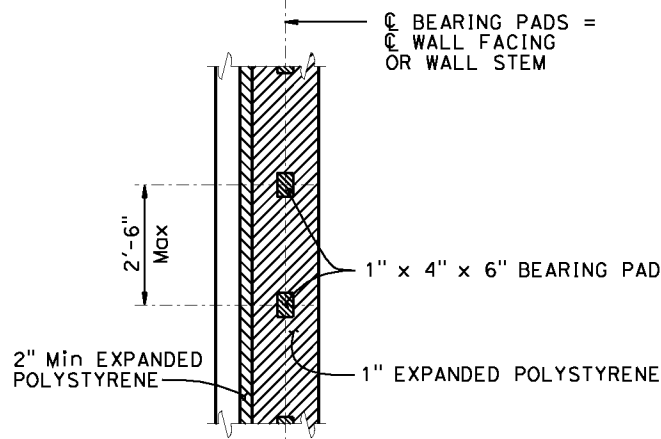
BARRIER SLAB DIMENSIONS

| DESIGN "H" OF SOUND WALL | NO SW | 12'-4" | 14'-4" | 16'-4" |
|--------------------------|-------------------|--------|--------|--------|
| BARRIER TYPE | 732 736 742 | 736 S | 736 S | 736 S |
| T | 1'-8" | 1'-8" | 2'-0" | 2'-0" |
| W | N/A | N/A | N/A | 2'-0" |
| D | N/A | N/A | N/A | 0'-9" |



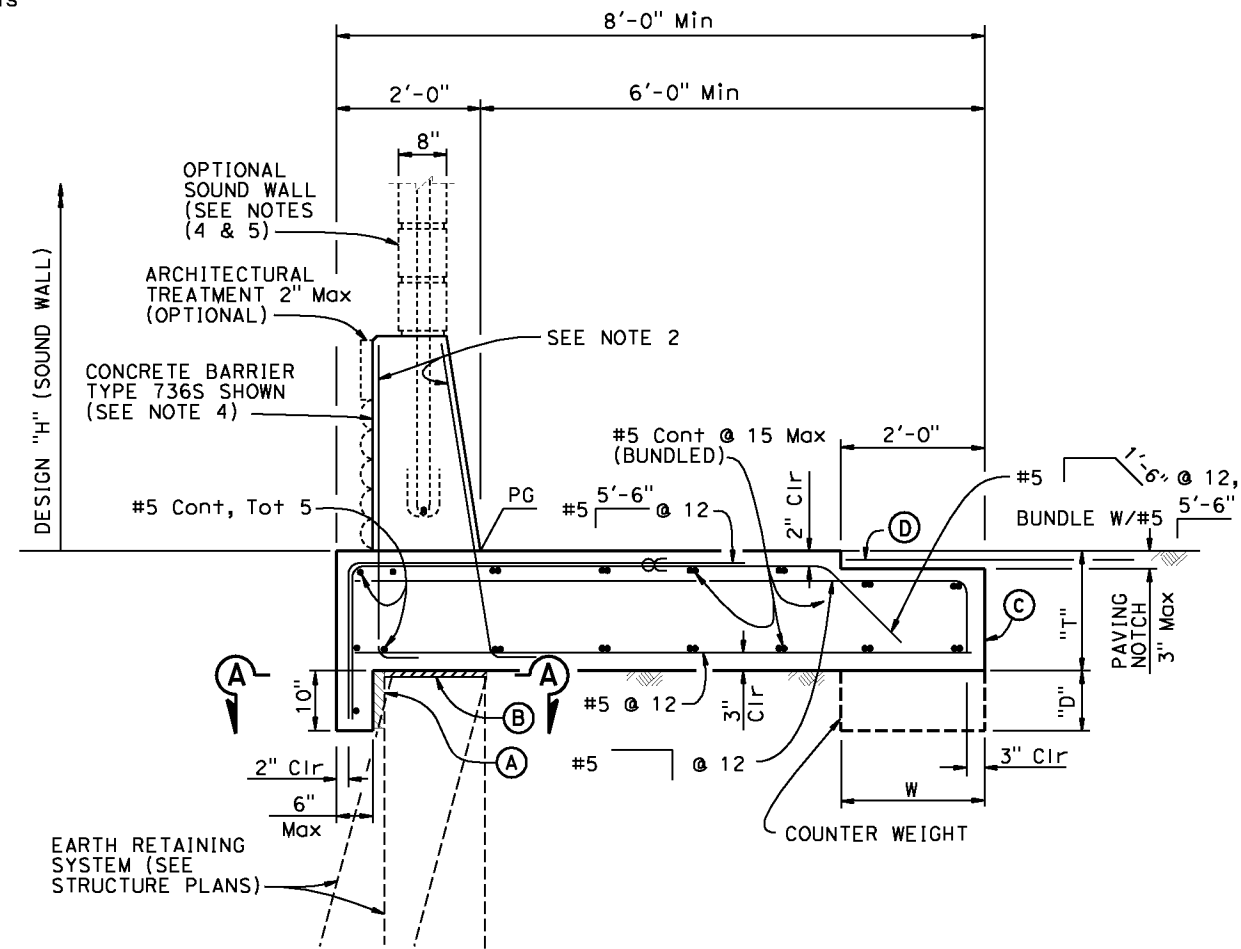
SECTION A-A

$\frac{1}{2}'' = 1'-0''$
 (For Soldier Pile Wall only)



SECTION A-A

$\frac{1}{2}'' = 1'-0''$
 (For all other Earth Retaining Systems)



CONCRETE BARRIER SLAB WITH PAVING NOTCH

$\frac{3}{4}'' = 1'-0''$

NOTES:

- (A) 2" Min Expanded polystyrene
- (B) 1" Expanded Polystyrene on MSE and concrete stem walls, See "SECTION A-A" for Soldier Pile Walls
- (C) Contact joint
- (D) 4'-0" wide pavement reinforcing fabric
- ∞ Indicates bundled bars

STANDARD DRAWING

FILE NO. **xs12-090**
 APPROVAL DATE: January 2012

STATE OF CALIFORNIA
 DEPARTMENT OF TRANSPORTATION

DIVISION OF ENGINEERING SERVICES

BRIDGE NO. X
 POST MILE X

CONCRETE BARRIER SLAB DETAILS

DATE PLOTTED => \$TIME USERNAME => \$USER