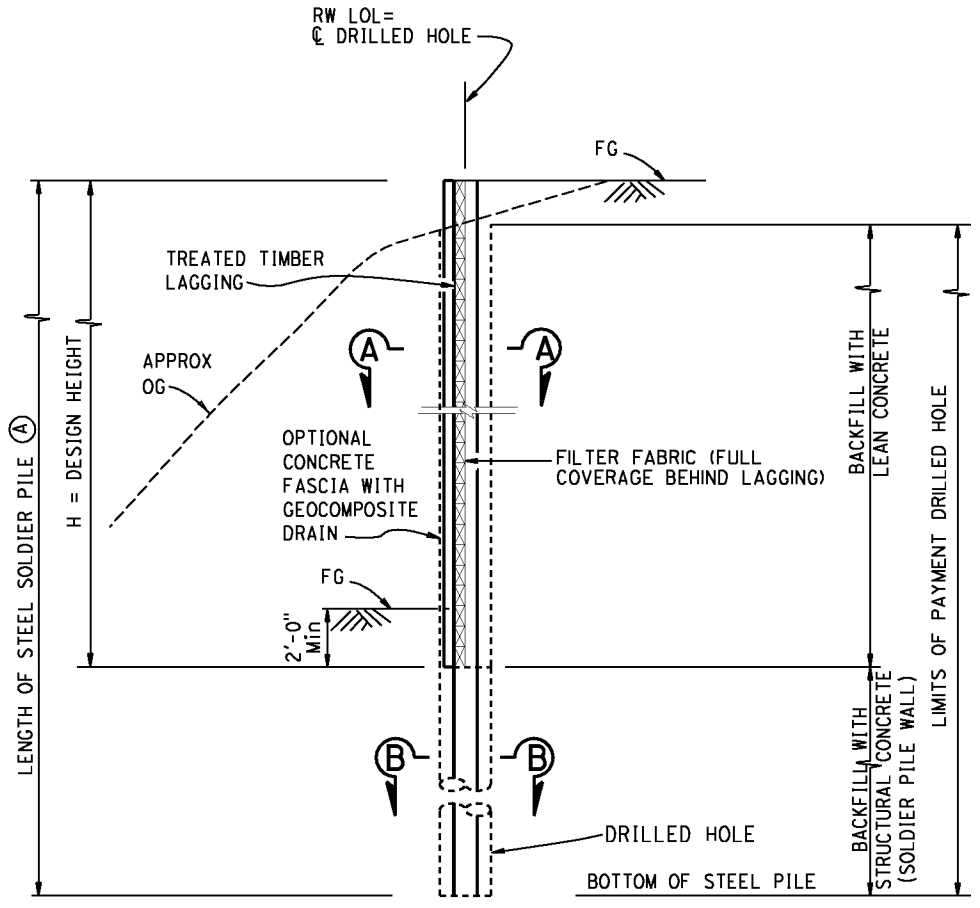


DIST	COUNTY	ROUTE	POST MILES TOTAL PROJECT	SHEET No.	TOTAL SHEETS
X	X	X	X	X	X

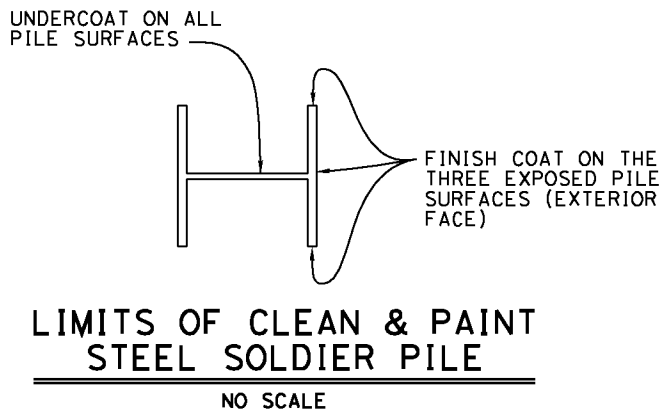
REGISTERED CIVIL ENGINEER	DATE
	X

PLANS APPROVAL DATE

The State of California or its officers or agents shall not be responsible for the accuracy or completeness of electronic copies of this plan sheet.



NOTE:
 (A) Clean and paint Steel Soldier Pile from top of pile to 5 feet, Min below bottom of lagging.
 For lagging details see "SOLDIER PILE WALL LAGGING DETAILS"

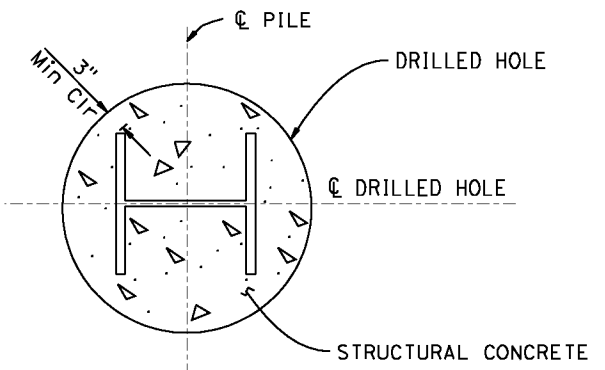


GENERAL NOTES

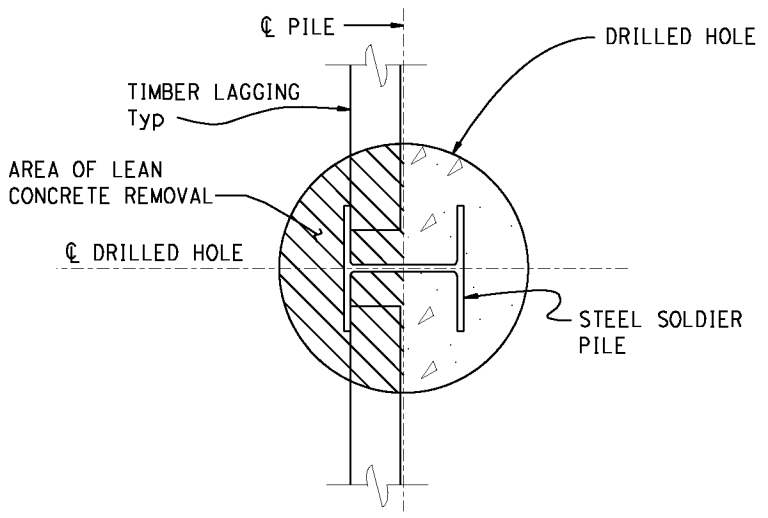
DESIGN: AASHTO LRFD Bridge Design Specifications, 4th Edition with California Amendments.
 LIVE LOAD: 240 psf equivalent to 2 feet soil weight
 SOIL PARAMETERS: (For determination of Design Lateral Earth Pressures)
 Backfill soil weight = ____ lb/ft³
 Friction Angle = ____ °
 Active Pressure coefficient, Ka = ____
 Bedrock Unit Weight = ____ lb/ft³
 Slope Angle = ____ °
 STEEL SOLDIER PILES: ASTM A572/A, ASTM 572M Grade 50 Min, or ASTM A36/A36M
 REINFORCED CONCRETE: f'c = 4000 psi, fy = 60 ksi
 STRUCTURAL TIMBER: Treated Douglas Fir, Grade No. 1 or better Timber to be full sawn

FOR DETAILS NOT SHOWN, SEE "PROJECT PLANS"

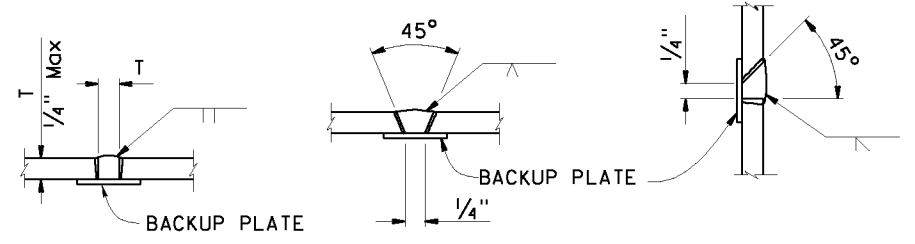
TYPICAL SECTION
NO SCALE



SECTION B-B
NO SCALE



SECTION A-A
NO SCALE



PILE WELDING DETAIL-BUTT JOINTS
NO SCALE

- NOTES:
1. Single vee-groove and square groove permitted for all positions
 2. Single bevel-groove permitted for horizontal joints only