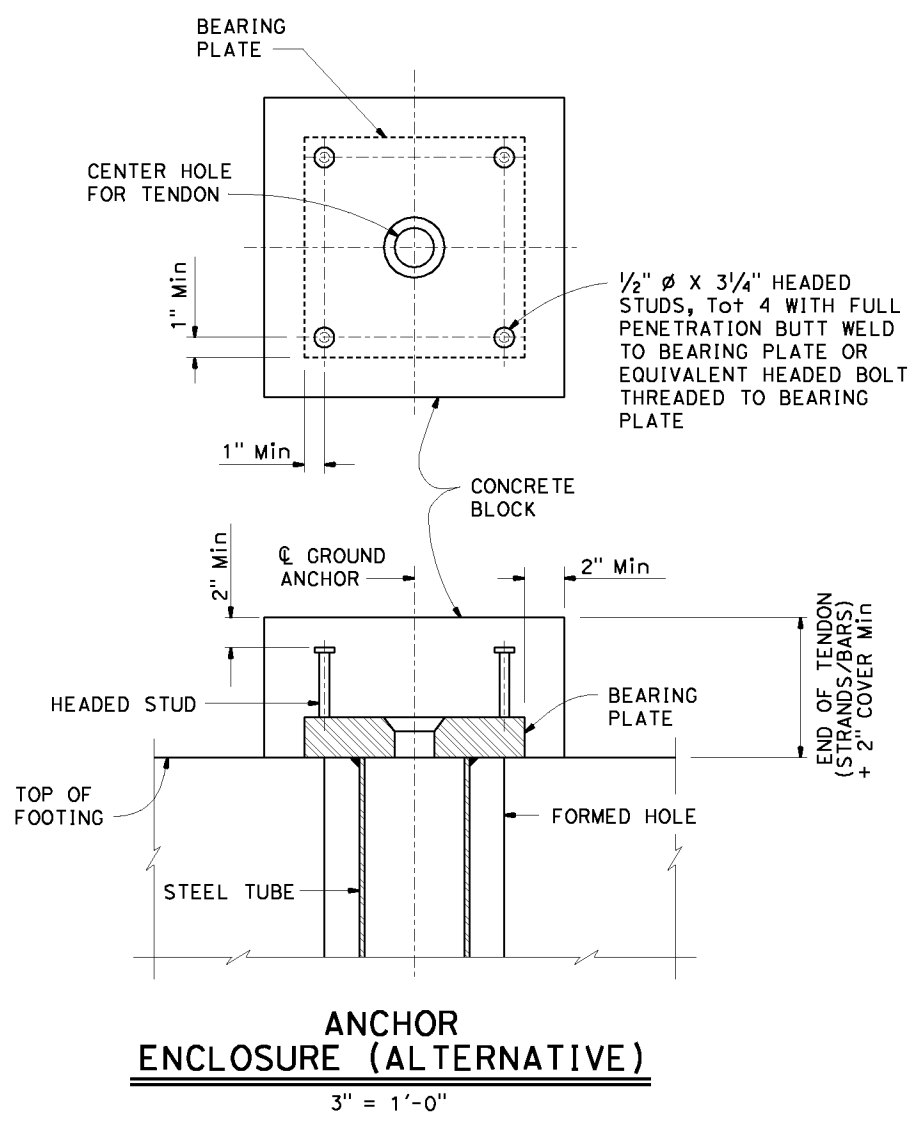
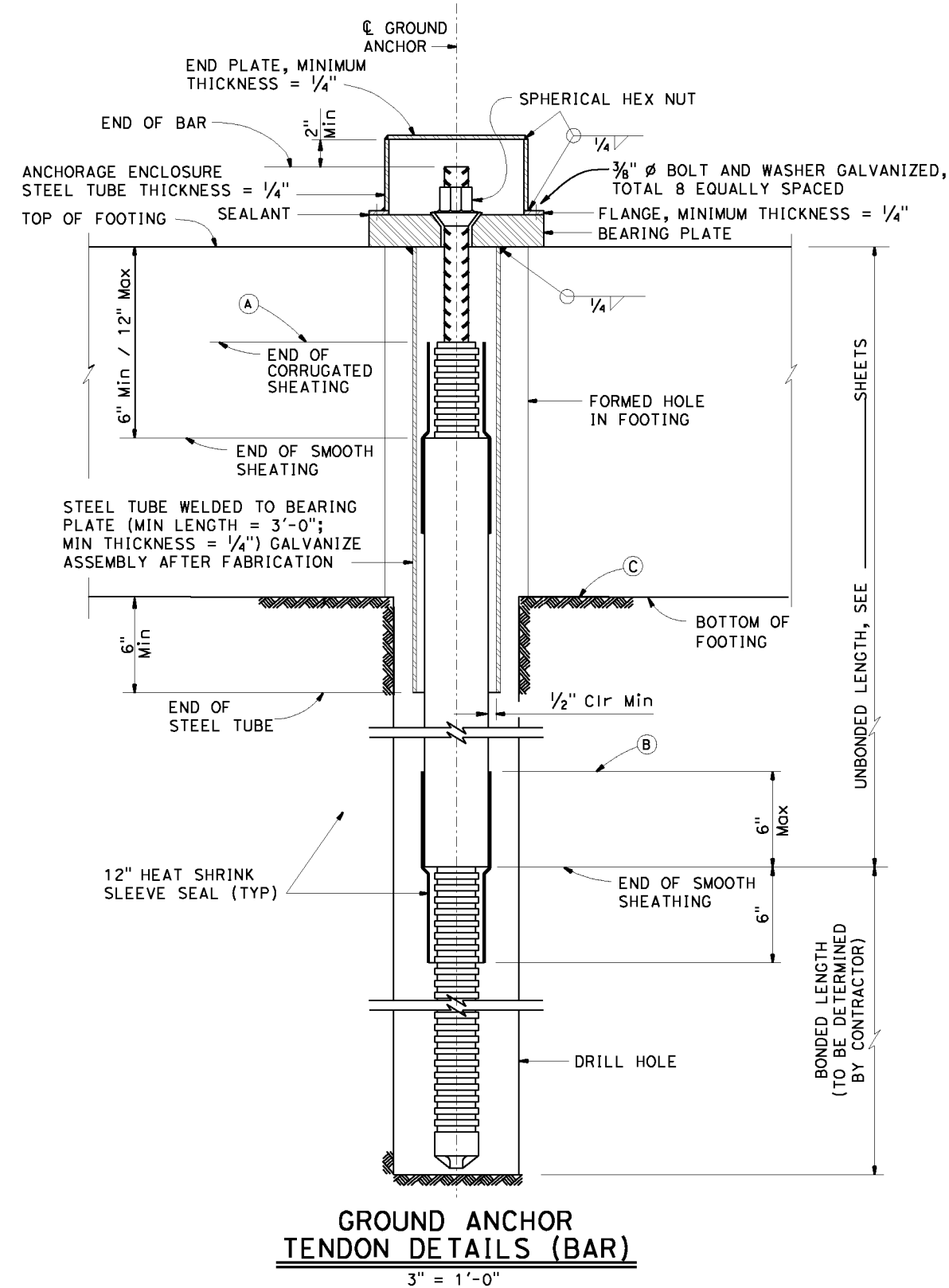


DIST	COUNTY	ROUTE	POST MILES TOTAL PROJECT	SHEET No.	TOTAL SHEETS
X	X	X	X	X	X

REGISTERED CIVIL ENGINEER	DATE
PLANS APPROVAL DATE	

REGISTERED PROFESSIONAL ENGINEER
No. X
Exp. X
CIVIL
STATE OF CALIFORNIA

The State of California or its officers or agents shall not be responsible for the accuracy or completeness of electronic copies of this plan sheet.



GENERAL NOTES

DESIGN: AASHTO LRFD Bridge Design Specifications, 4th edition with California Amendments.

PRESTRESSING STEEL (GROUND ANCHORS):

BARS - ASTM Designation: A722 Type II

Tp = Factored test load per tendon (Kips)

fpu = Minimum tensile strength of prestressing steel (ksi)

As = Minimum cross sectional area of prestressing steel in tendon (square inches)

$$As \text{ (Min)} = \frac{1.0 T_p}{0.75 f_{pu}} \text{ (Bar)}$$

- NOTES:
- Anchorage enclosure shall have provision to allow injecting grout at low end and venting at high end. Galvanize enclosure after fabrication.
 - (A) Level of initial grouting inside corrugated sheathing
 - (B) Level of initial grouting in drilled hole
 - (C) Level of secondary grouting in drilled hole

STANDARD DRAWING	
FILE NO. xs12-030-2	APPROVAL DATE <u>July 2011</u>

STATE OF CALIFORNIA	
DEPARTMENT OF TRANSPORTATION	

DIVISION OF ENGINEERING SERVICES	
BRIDGE NO.	X
POST MILE	X

X	
VERTICAL GROUND ANCHOR DETAILS NO. 2	

DATE PLOTTED => \$DATE USERNAME => \$USER TIME PLOTTED => \$TIME