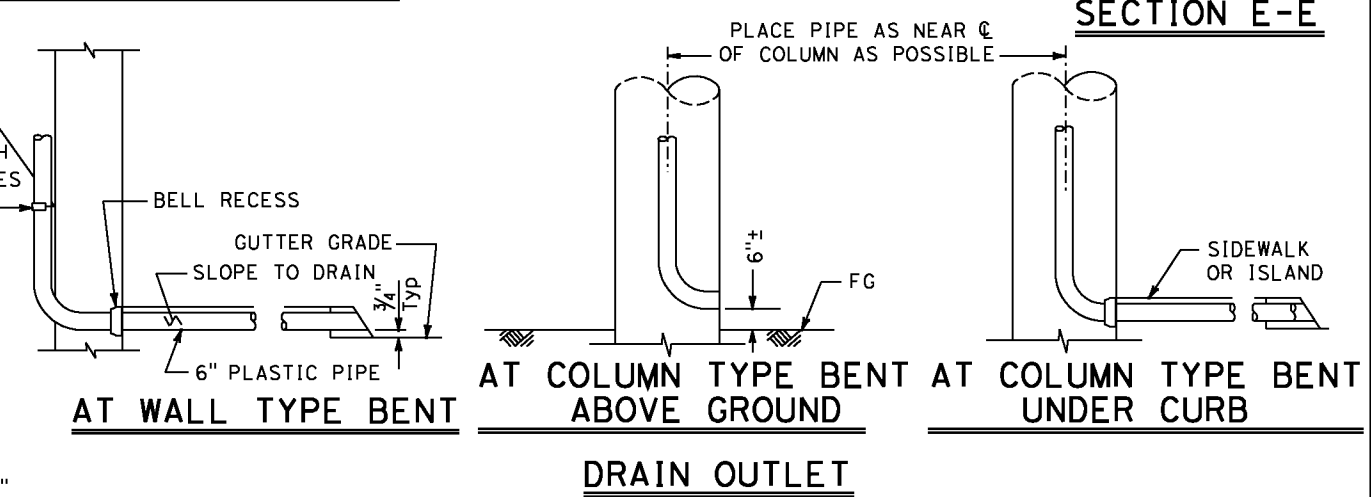
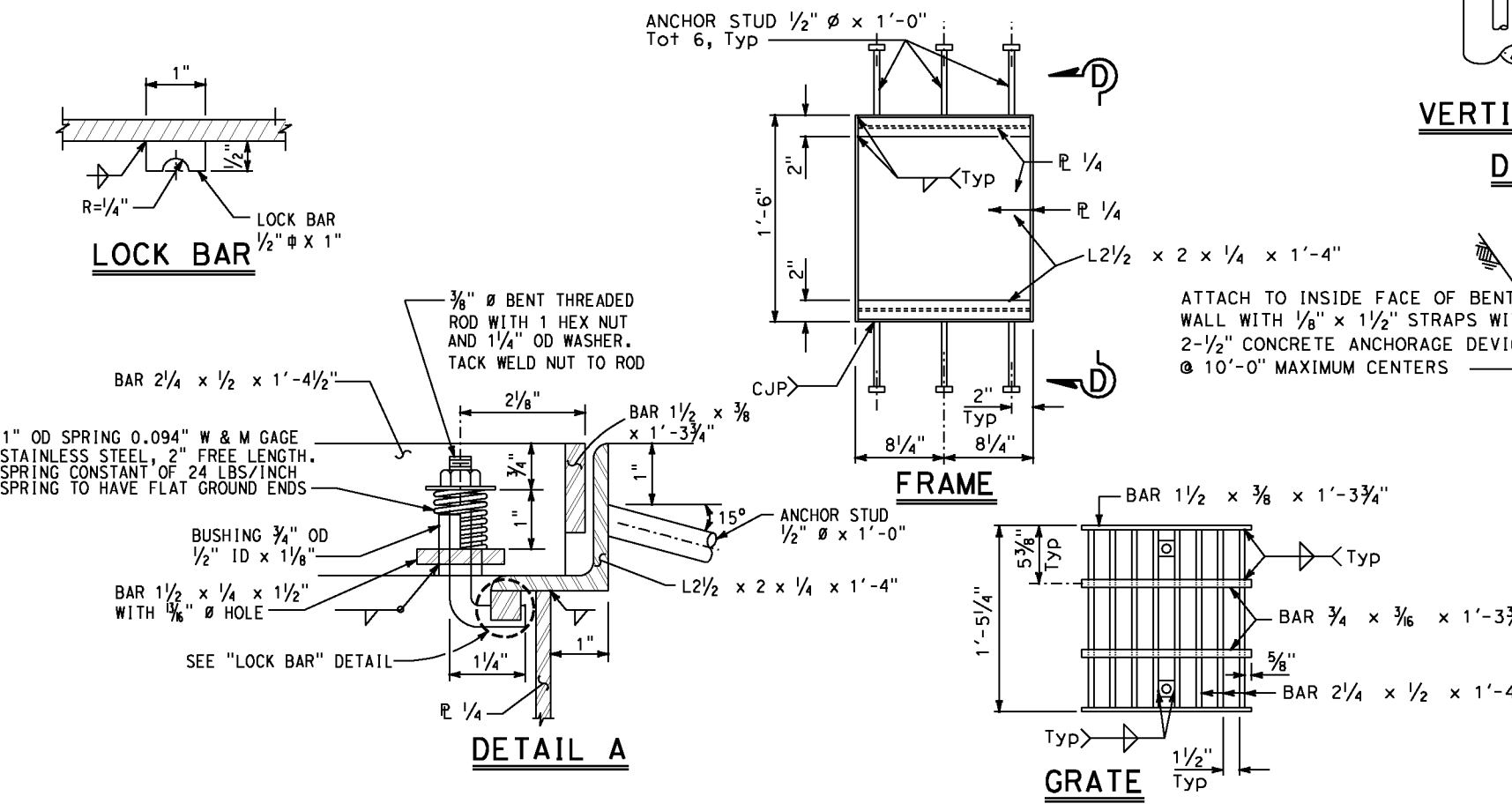
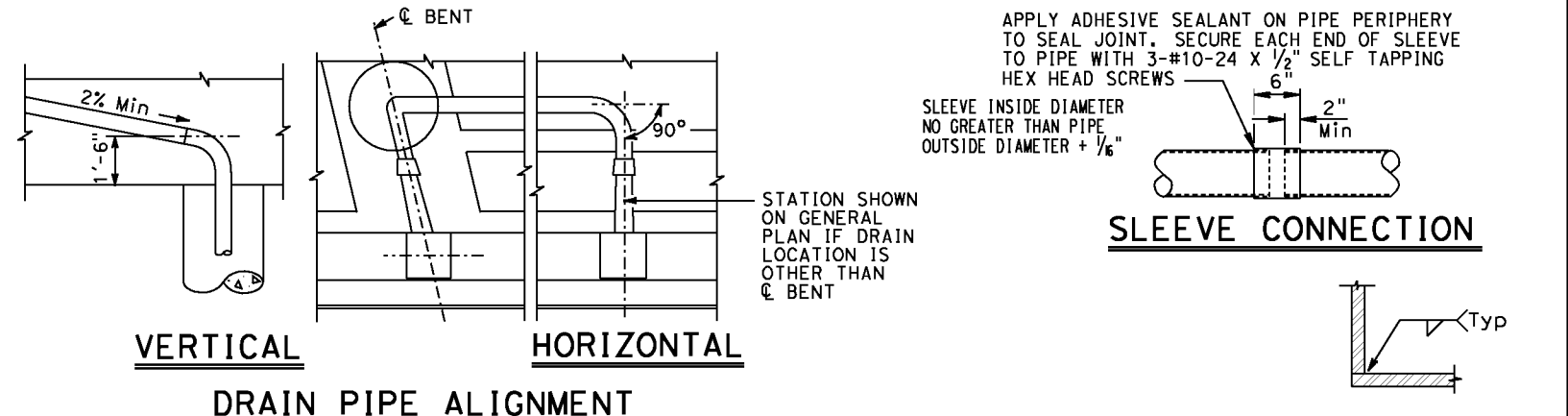
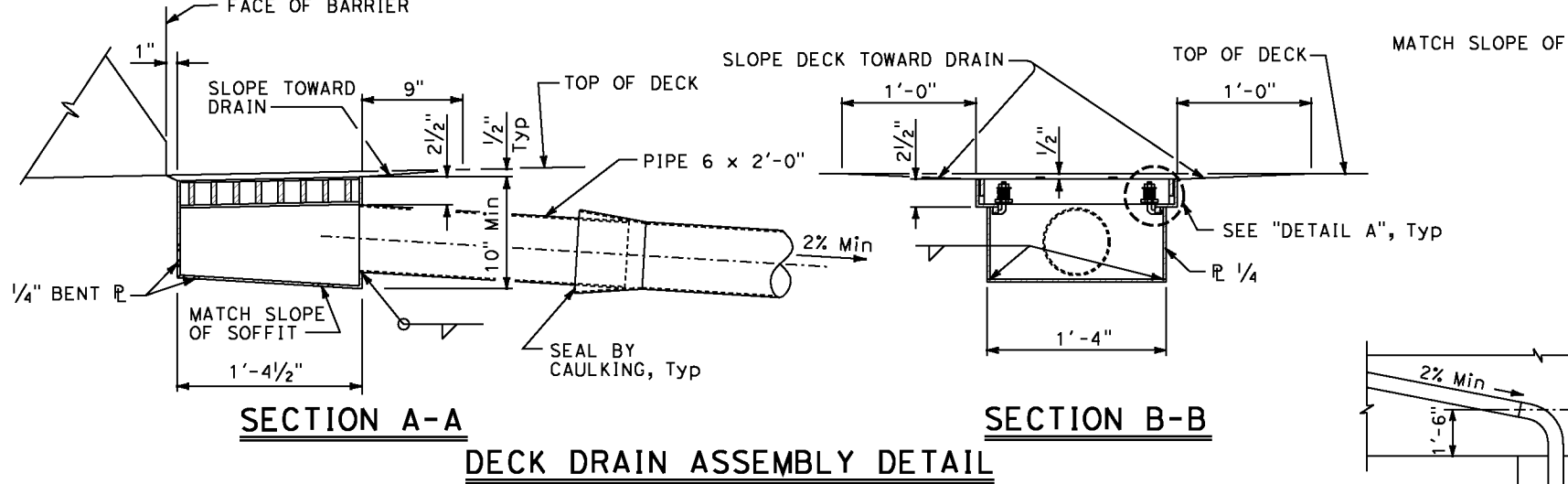
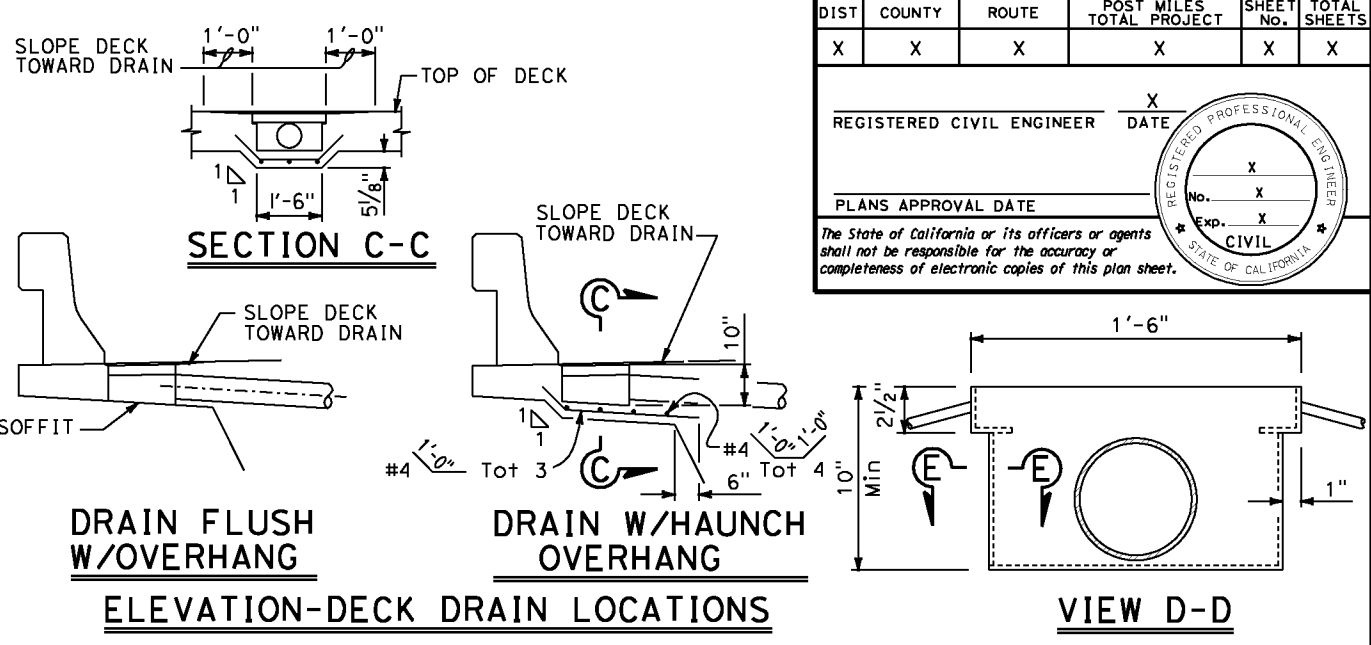
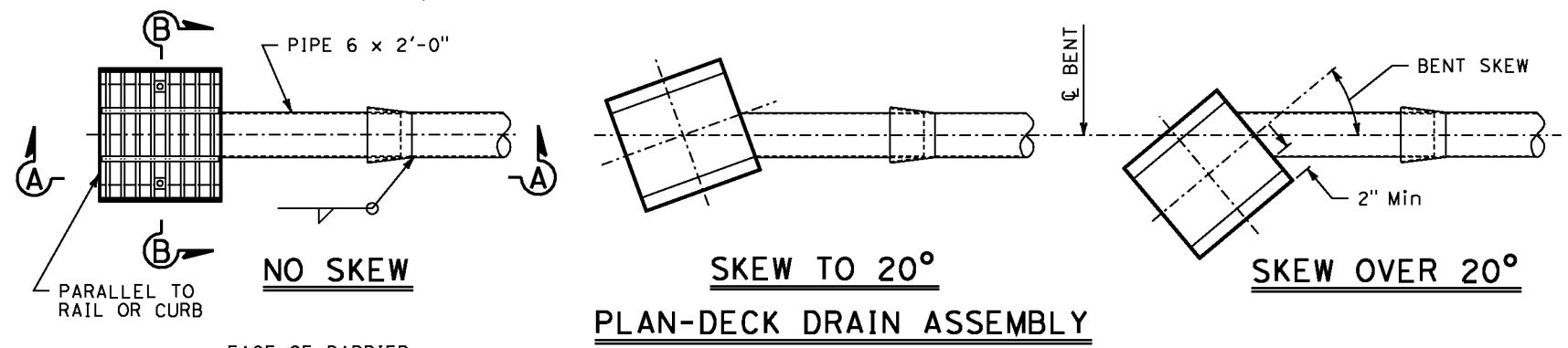


DIST	COUNTY	ROUTE	POST MILES TOTAL PROJECT	SHEET No.	TOTAL SHEETS
X	X	X	X	X	X

REGISTERED CIVIL ENGINEER	X	DATE	
PLANS APPROVAL DATE			

The State of California or its officers or agents shall not be responsible for the accuracy or completeness of electronic copies of this plan sheet.



NOTE:  
 All pipe to be NPS 6 x 0.135" welded steel pipe except as noted and galvanized if not encased in concrete. Fittings and bends shall have a minimum wall thickness of 1/8". All joints or connections to be butt welded or connected by a steel pipe sleeve and to be smooth throughout inside of pipe except as noted. All bends to be on 1'-6" minimum radius measured along C pipe. All bends to be supported by suitable galvanized hangers @ 10'-0" maximum spacing throughout. Galvanize deck drain assembly after fabrication.

STANDARD DRAWING		STATE OF CALIFORNIA		DIVISION OF ENGINEERING SERVICES		BRIDGE NO. X		X	
FILE NO. <b>xs10-020</b>	APPROVAL DATE July 2011	DEPARTMENT OF TRANSPORTATION		PROJECT NUMBER & PHASE: X		POST MILE X		DECK DRAIN - TYPE D-2 MODIFIED	
DS OSD 2147A (ENGLISH STANDARD DRAWING "XS" BORDER REV. [02-02-11])		ORIGINAL SCALE IN INCHES FOR REDUCED PLANS		UNIT: X		CONTRACT NO.: X		DISREGARD PRINTS BEARING EARLIER REVISION DATES	
				0 1 2 3				REVISION DATES SHEET OF X X	