

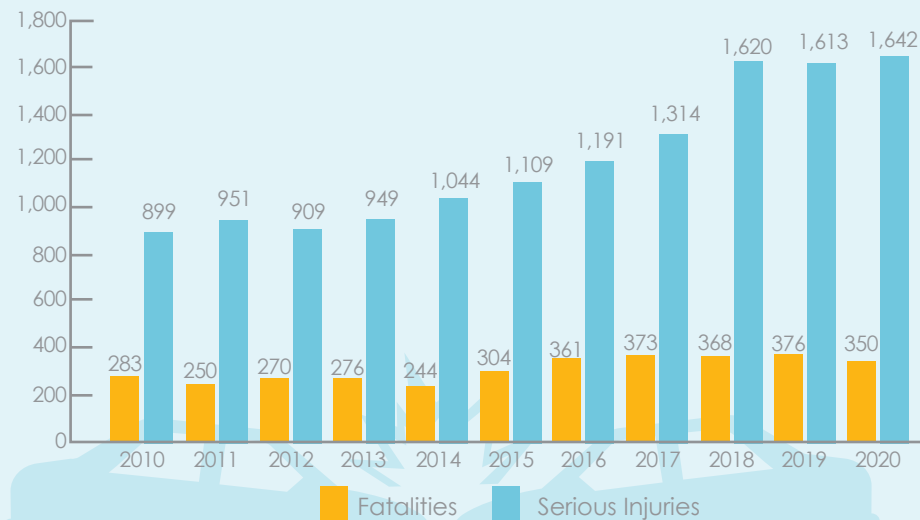
Sacramento Region



Sacramento Region Fatalities and Serious Injuries by Year

Since 2010, Sacramento Region roadway fatalities and serious injuries increased by

69%



Data Source: Fatality Analysis Reporting System (FARS) 2010-2020 for Fatalities and Statewide Integrated Traffic Records System (SWITRS) 2010-2020 for Serious Injuries



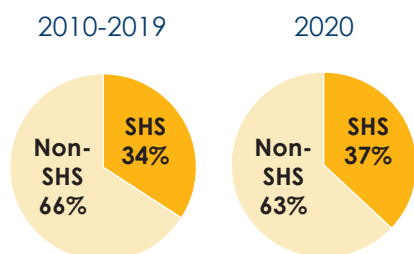
COUNTIES:

- Amador
- Butte
- Colusa
- El Dorado
- Glenn
- Nevada
- Placer
- Sacramento
- Sierra
- Sutter
- Yolo
- Yuba

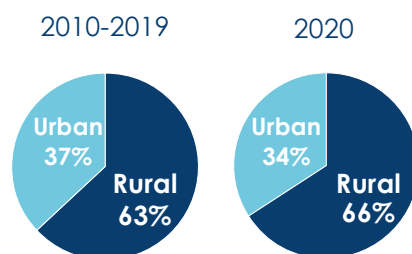
WHERE?

About two-thirds of fatalities and serious injuries occurred on non-state highways from 2010-2019 and in 2020. Similarly, two-thirds of fatalities and serious injuries occurred in a rural setting from 2010-2019 as well as 2020.

Sacramento Region Highway System Fatalities and Serious Injuries



Sacramento Region Urban vs. Rural Fatalities and Serious Injuries



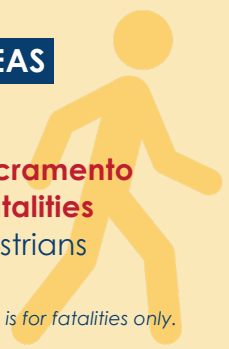
In the 2017 National Household Travel Survey,

12.6% of California's mode share per trip are **pedestrians**

WHEREAS

20% of Sacramento Region fatalities are pedestrians

Pedestrian comparison is for fatalities only.

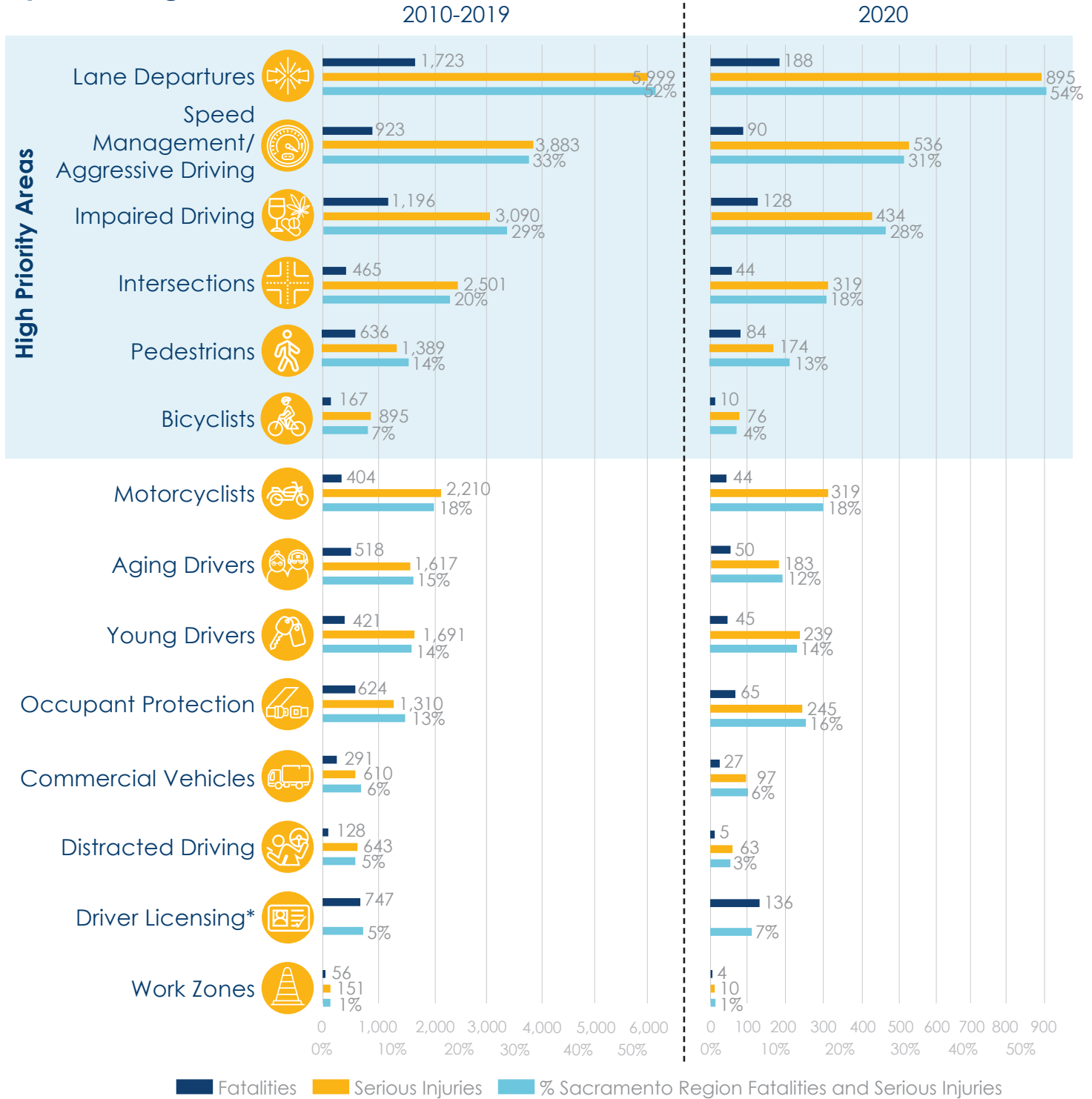


All crash data is Statewide Integrated Traffic Records System (SWITRS) unless otherwise noted.

Sacramento Region



Fatalities and Serious Injuries by Challenge Area



*Driver Licensing information based on FARS, which does not include serious injury data.

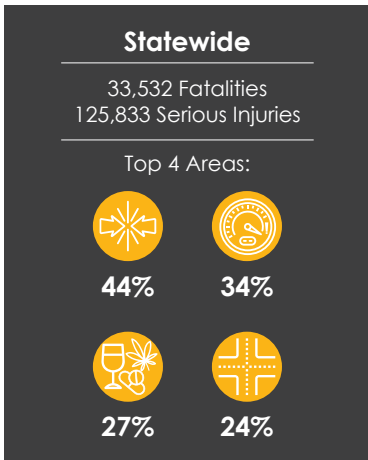
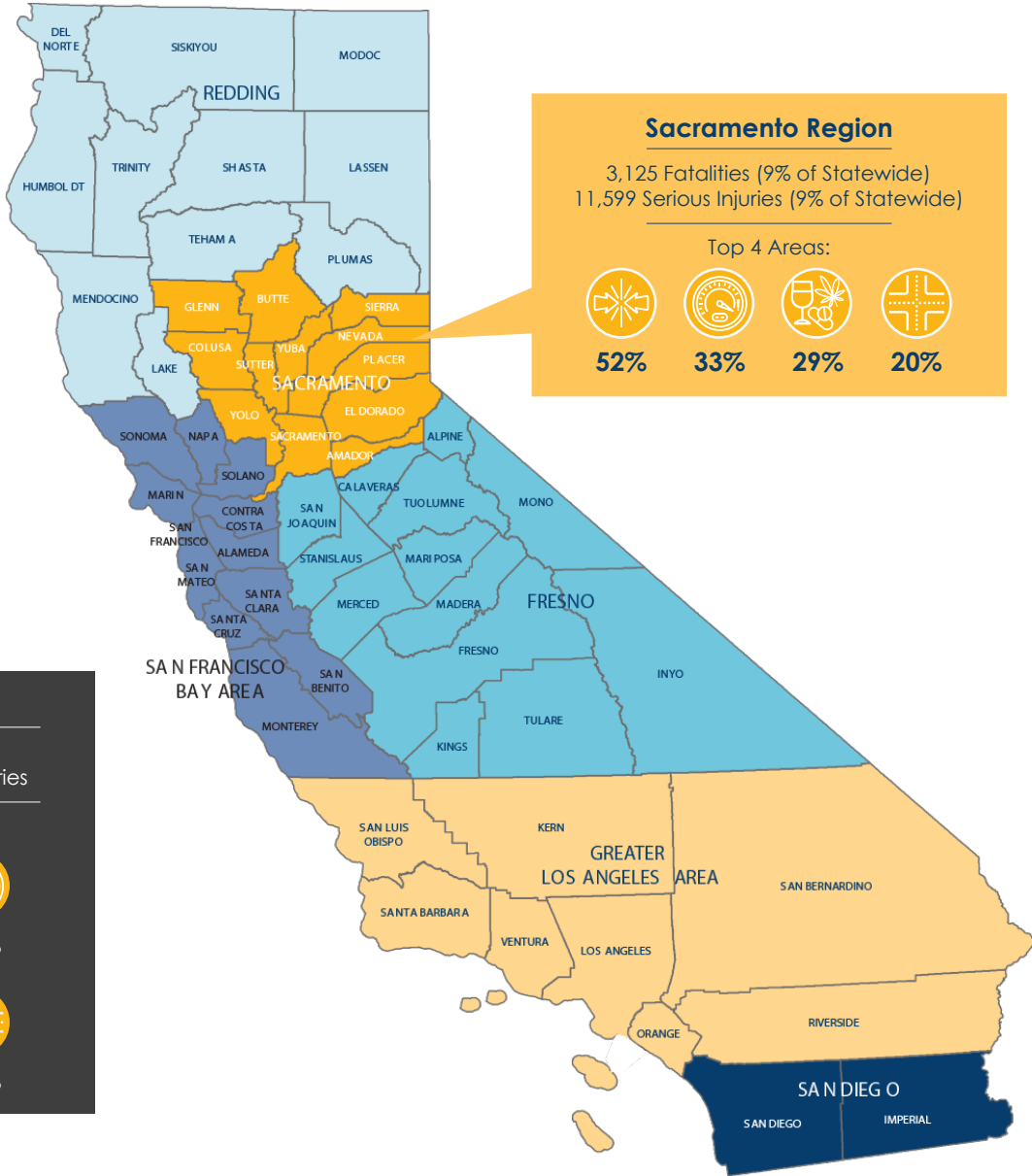
Some fatalities and serious injuries may involve more than one factor and are counted in multiple groups; the sum of all groups is greater than 100%. Emergency Response and Emerging Technologies Challenge Areas do not have reported crash data and are not represented in this chart.

All crash data is Statewide Integrated Traffic Records System (SWITRS) unless otherwise noted.

Sacramento Region



Fatalities and Serious Injuries 2010-2019



LEGEND

- Impaired Driving
- Intersections
- Lane Departures
- Speed Management/Aggressive Driving

All crash data is Statewide Integrated Traffic Records System (SWITRS) unless otherwise noted.