

Figure 1B-1. Process for Requesting and Conducting Experimentations for New Traffic Control Devices

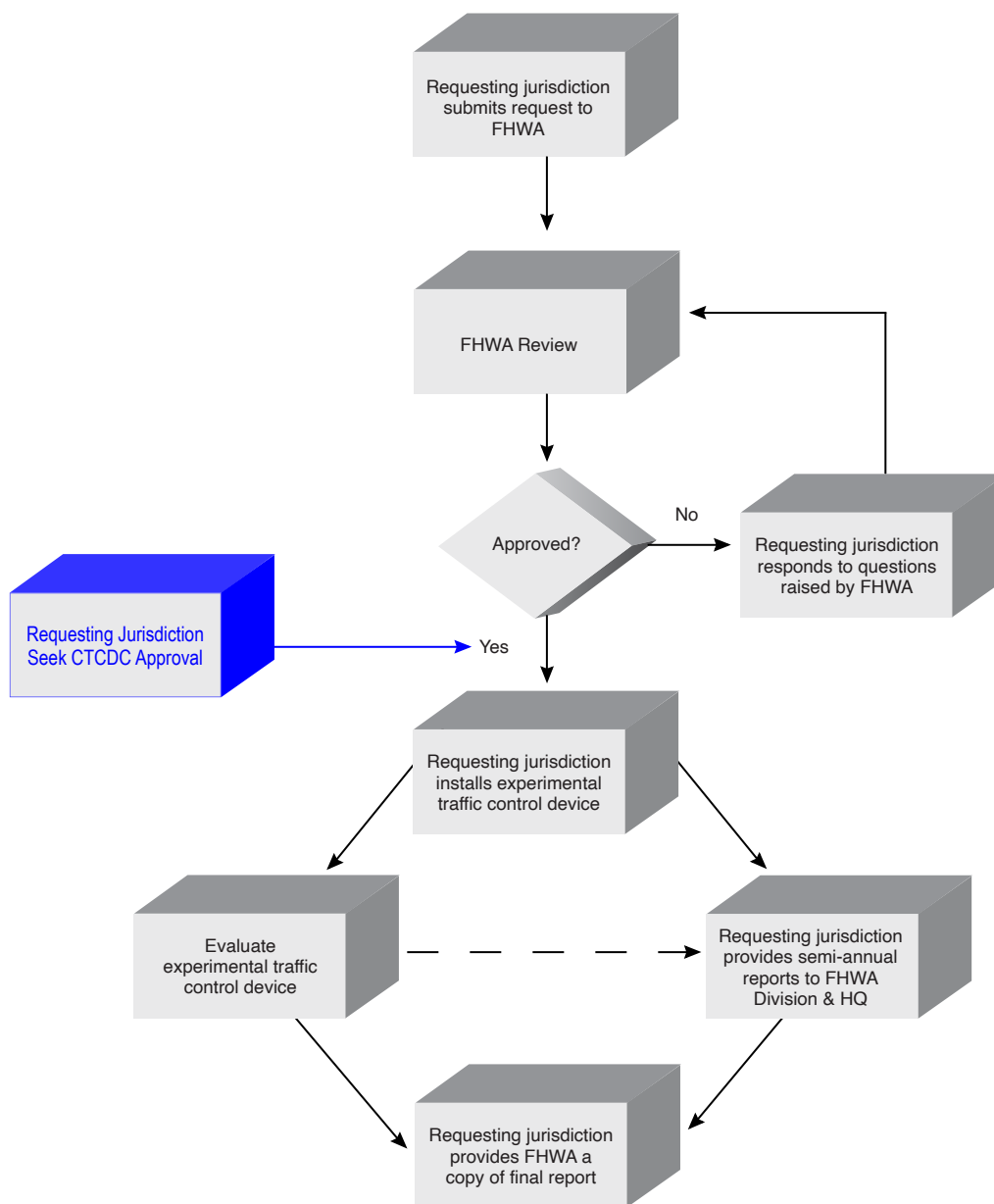


Figure 1B-1 (CA). Process for Requesting and Conducting Experimentations for New Traffic Control Devices in California

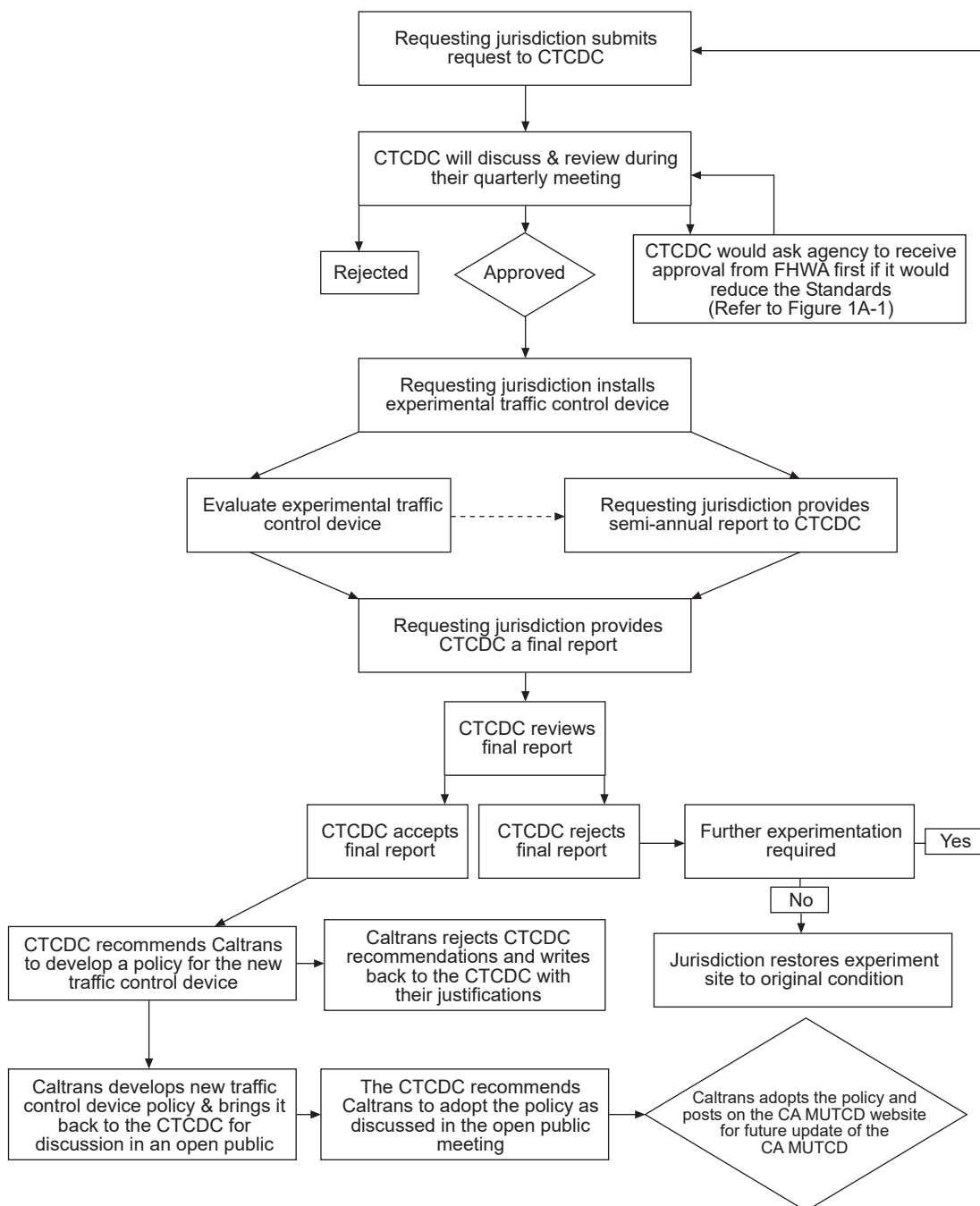
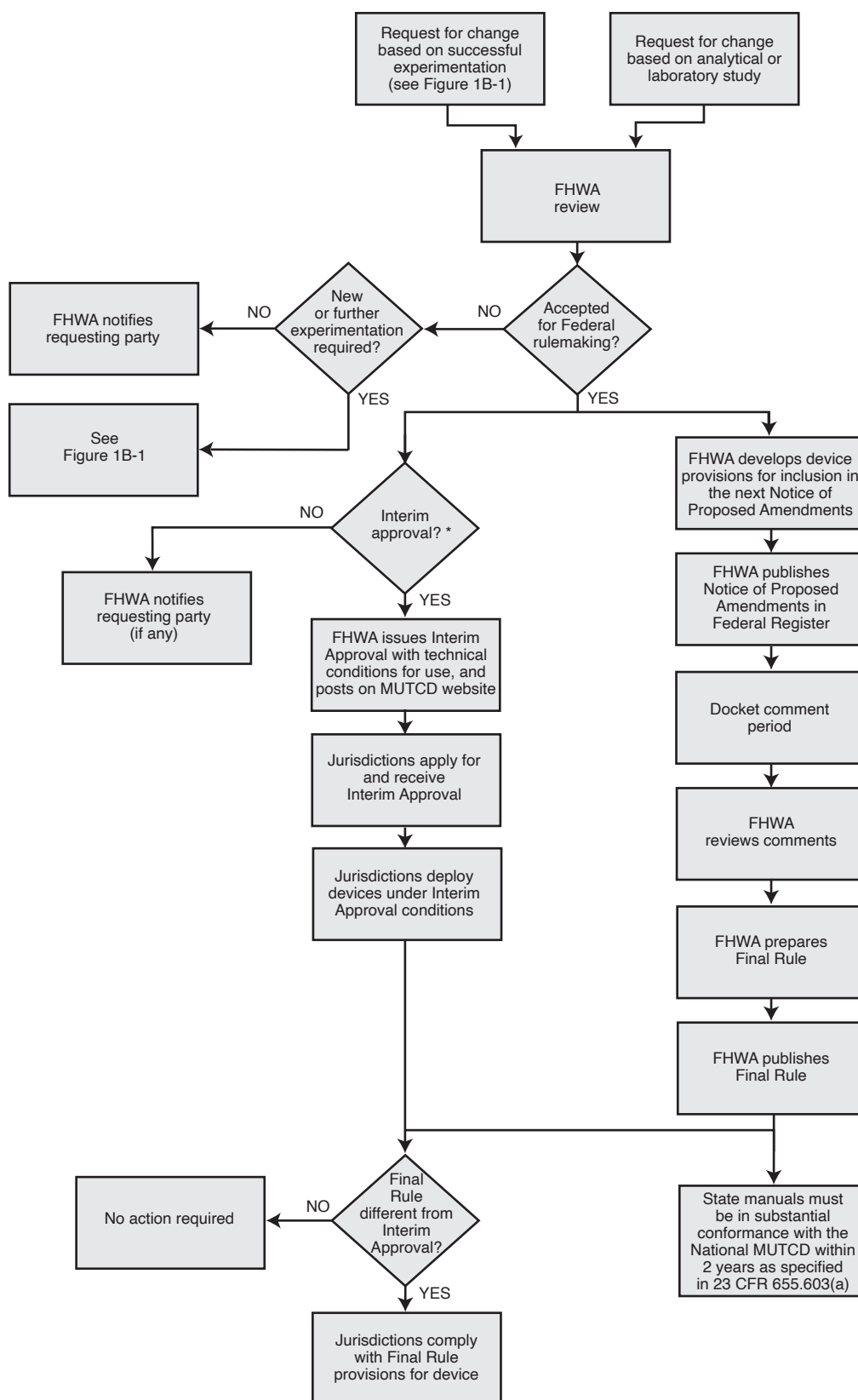


Figure 1B-2. Process for Incorporating New Traffic Control Devices into the MUTCD



*A change request to allow the use of a new traffic control device is considered for Interim Approval when FHWA determines that the change will have a substantial national safety or operational benefit and that it would not be in the public interest to wait the intervening time period before the device could otherwise be officially incorporated into the MUTCD through rulemaking.

**Figure 1B-101 (CA). Process for the Use of Traffic Control Devices in California
Approved as Interim Approval (IA) by FHWA**

