

Research Results

Programming, Policy and Planning

December 2024

Project Title: The Impact of Work-From-Home on Job and Housing Location in the Bay Area—Central Valley Region

Task Number: 3464

Start Date: August 1, 2023

Completion Date: July 31, 2024

Task Manager:

Connor Campbell
Transportation Planner
Connor.campbell@dot.ca.gov

The Impact of Work-From-Home on Job and Housing Location in the Bay Area—Central Valley Region

An Analysis of the Relationship Between Traffic, Telecommuting, and Mitigation During and After COVID-19

WHAT WAS THE NEED?

This research examined the growing trend of working-from-home and its impact on job and housing locations before and during COVID-19. The current debate has begun to connect work-from-home with the potential for moving from one home location to another. However, due to data limitations, the relationship between telecommuting and home location changes is still unclear. Current studies looking at commute patterns during the pandemic are mostly based at home locations. No studies have looked at the changes at work locations with home locations.

WHAT WAS OUR GOAL?

This study aimed to independently evaluate the reliability and repeatability of a direct tension test method for UHPC, developed by the Federal Highway Administration (FHWA) and adopted by the American Association of State Highway and Transportation Officials (AASHTO) as AASHTO T 397.

WHAT DID WE DO?

We identified major areas of places that attract trips in the Bay Area and Central Valley. We then analyzed the change in commute trips at these locations during the pandemic. Next, we identified areas that produce these changes by using commute data to connect job locations with home locations. Last, we looked at the data of the people of the commute data to assess whether different kinds of commuters are more likely to move further away from job centers.

WHAT WAS THE OUTCOME?

The research team successfully completed the research



DRISI provides solutions and knowledge that improves California's transportation system.

project which provided valuable insights into the far-reaching impacts of COVID-19 on the transportation and location preferences of Californians in the region.

WHAT IS THE BENEFIT?

This project has provided further insight into the impacts of COVID-19 on traveler decision making and housing location choices with respect to the supercommuting population.

LEARN MORE

<https://www.metrans.org/research/the-impact-of-work-from-home-on-job-and-housing-location-in-the-bay-area-central-valley-region-an-analysis-of-the-relationship-between-traffic-telecommuting-and-migration-during-and-after-covid-19>

IMAGES

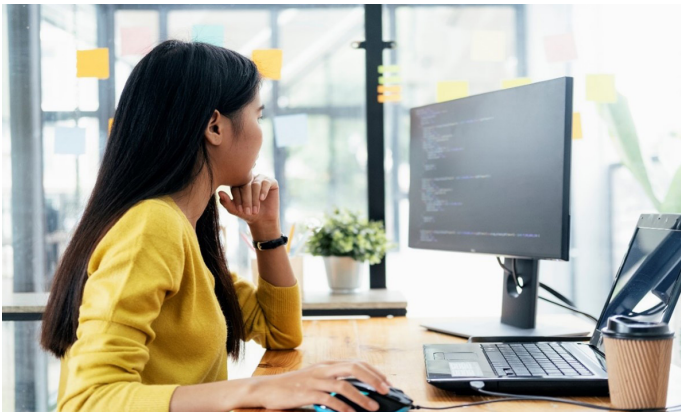


Image 1: Working from home

The contents of this document reflect the views of the authors, who are responsible for the facts and accuracy of the data presented herein. The contents do not necessarily reflect the official views or policies of the California Department of Transportation, the State of California, or the Federal Highway Administration. This document does not constitute a standard, specification, or regulation. No part of this publication should be construed as an endorsement for a commercial product, manufacturer, contractor, or consultant. Any trade names or photos of commercial products appearing in this document are for clarity only.