



---

# **Environmental Stewardship, Water Pollution Control, and Public Relations**



---

# **Environmental Stewardship**



# Environmental Stewardship: Objectives

---



## Be able to...

- Name the laws that mandate protecting the environment
- List the duties an RE must perform to comply with these laws
- Document compliance



# Environmental Stewardship: Federal Law

---



## National Environmental Policy Act (NEPA) of 1969

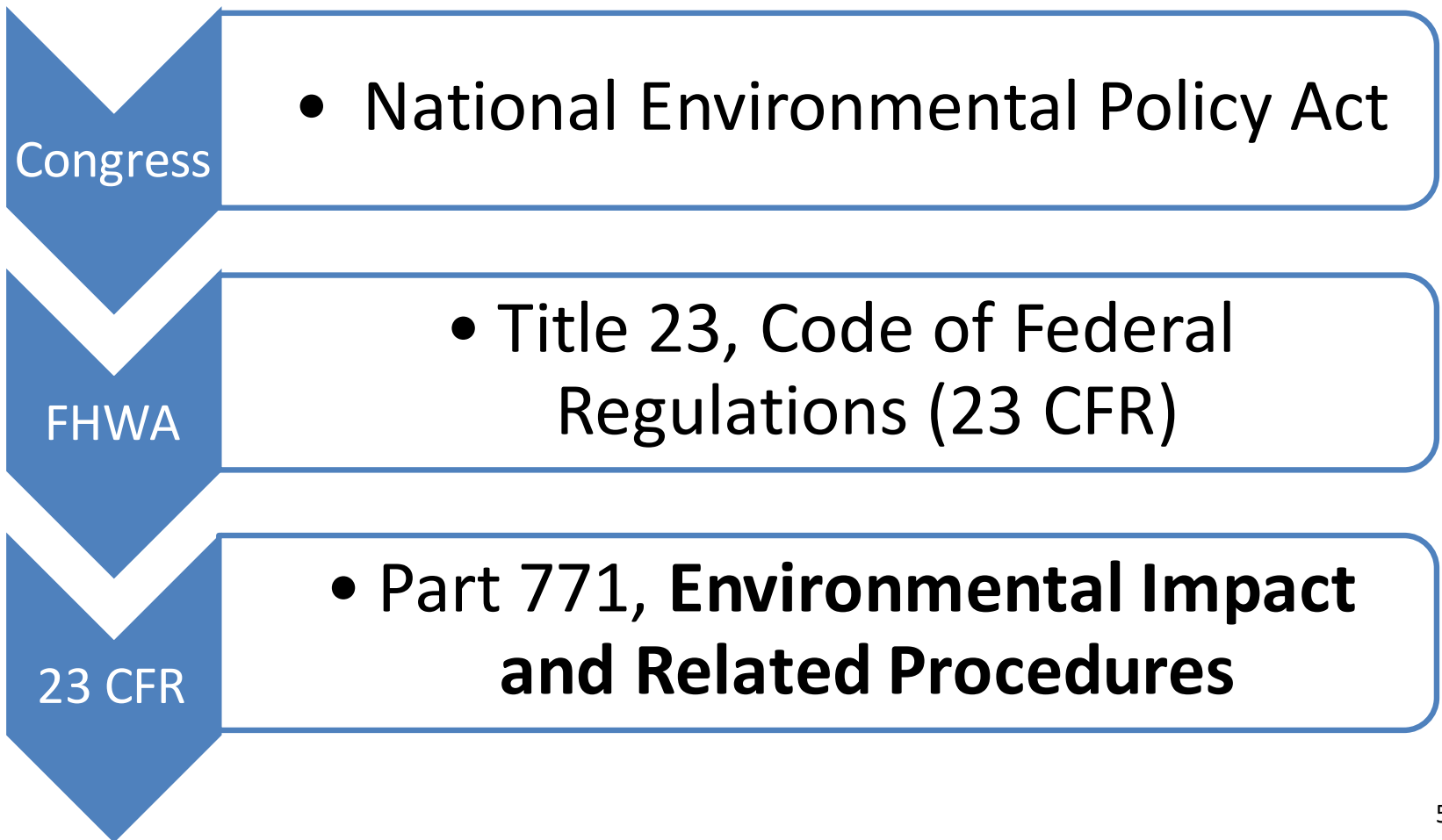
***...to prevent or eliminate damage to  
the environment and biosphere and  
stimulate the health and welfare of  
man,...***



# Environmental Stewardship: Federal Law



## The Relationship between FHWA and NEPA





# Environmental Stewardship: Federal Law

---



## NEPA Mandated Federal Agencies to:

- **Consider** potential environmental consequences of proposed project
- **Document** the analysis of those consequences
- Allow for **public for comment** prior to implementation



# Environmental Stewardship: Federal Law



## National Environmental Policy Act (NEPA)

### The 3 Types of Project Environmental Documents

**Categorical Exclusion  
(CE)**

=>

No Determination  
Needed

**Environmental  
Assessment (EA)**

=>

FONSI  
or  
further study

**Environmental  
Impact Statement  
(EIS)**

=>

Record of Decision  
(ROD)



# Environmental Stewardship: Federal Law

---







# Environmental Stewardship: Federal Law

---



*It shall be the **responsibility of the...agency** to ensure that the project is constructed in accordance with and incorporates all committed environmental impact mitigation measures listed in approved environmental documents...*

**23 CFR 771.109(d)**



# **Environmental Stewardship: Local Assistance Procedures Manual**

---



## **LAPM**

### **Chapter 6 Environmental Procedures**

**6.1 Roles and Responsibilities**

**6.3 Mitigation and Construction**



# Environmental Stewardship: Local Assistance Procedures Manual

---



The local agency will obtain all necessary permits *prior to advertisement* for construction.

LAPM 6.2 An Overview of the Environmental Process;  
Other Considerations Permits



# Environmental Stewardship: Local Assistance Procedures Manual

---



The local agency is responsible for ensuring that mitigation commitments are...

- Incorporated into the PS&E
- Implemented during construction
- Documented!
- Maintained as required

**LAPM 6.1 Roles and Responsibilities, Local Agency**



# Environmental Stewardship: Local Assistance Procedures Manual

---



The local agency must certify that all required mitigation is included in the PS&E.

## LAPM 6.3 Mitigation and PS&E

The local agency must document and certify that all environmental commitments have been completed.

## LAPM 6.3 Mitigation and Construction



# **Environmental Stewardship: Local Assistance Procedures Manual**

---



## **Environmental Commitment Record (ECR):**

1. Record each environmental commitment made (PS&E)
2. Specify how each commitment will be met (PS&E)
3. Document the completion of each commitment (Constr.)



# Environmental Stewardship: RE Responsibilities **Pre**-Construction

---



- Verify the environmental doc and permits all in the project file
- Confirm all mitigation measures shown on the environmental docs and permits made it into your contract (PS&E)
- Document as mitigation measures are completed



# Environmental Stewardship: Local Assistance Procedures Manual

## Local Assistance NEPA Permits & Environmental Commitment Record

<b>Project Name</b>	<u>Alexander Avenue Bridge Retrofit/Rehabilitation Project</u>	<b>Name of Local Agency</b>	<u>City of Larkspur</u>
<b>Federal Aid Number</b>	<u>STPLZ 5166 (004)</u>	<b>Local Agency Contact and Phone</b>	<u>Hamid Shamsapour</u>
<b>Project Description</b>	<u>Seismic retrofit and repair of Alexander Avenue Bridge located in the City of Larkspur, including abutment retrofit, construction of an infill wall, jacket columns and caps and repair work.</u>		

PERMITS REQUIRED	DATE OF PERMIT	DATE RECEIVED BY CALTRANS
Section 401 Water Quality Certification		
Section 404 Nationwide Permit		

NOTE: This following table is intended as a summary guide to environmental commitments. It does not replace or supercede any environmental commitments made in technical studies or correspondence prior to NEPA clearance. If there are any discrepancies between this table and technical studies/correspondence then the technical studies/correspondence take precedence

Task and Brief Description	Document	Page	Timing/ Phase	Specific Action(s) Taken to Comply with Task	Local Agency Certification of Task Completion		Remarks
					Initial	Date	
Cultural Resource Commitments							
The Plans must be reviewed by, or under the direct supervision of, an architectural historian with the requisite experience	HPSR CE	8 2	PSE				
Air Quality Commitments							
Do not burn material to be disposed of	AQ Memo	9	Constr				
Use non-potable water for dust control (from Caltrans SS)	AQ Memo	9	Constr				
All active construction areas watered at least	AQ Memo WQ Memo	10 1	Constr				





# Environmental Stewardship: Local Assistance Procedures Manual



## Sample ECR page 2

Task and Brief Description	Document	Page	Timing/ Phase	Specific Action(s) Taken to Comply with Task	Local Agency Certification of Task Completion		Remarks
					Initial	Date	
Temporary silt fence will be used and maintained as a linear sediment barrier.	Water Quality Memo	1	<u>Constr</u>				
Temporary Erosion Control (Netting) will be applied for areas that have high erosion potential, such as the slopes adjacent to the multi-use path below the bridge	Water Quality Memo	1	<u>Constr</u>				
<b>Traffic Commitments</b>							
During the two month bridge closure, a traffic detour with construction signing, advance warning signing, and public outreach efforts will be implemented.	Traffic Memo	1	<u>Constr</u>				
<b>4(f) Commitments</b>							
Prior to construction, a temporary construction zone would be established which does not interrupt trail access along the multi-use path	4(f) Memo	4,5,9	<u>Pre-Constr/</u> <u>Constr</u>				



# Environmental Stewardship: RE Responsibilities **Pre**-Construction

---



*If required by your environmental docs or permits ...*

- Confirm Inspector/construction crew trainings held
- Verify ESA staging areas are fenced
- Approve biological monitors



# Environmental Stewardship: RE Responsibilities **Pre**-Construction

---



*If required by your environmental docs or permits ...*

- Perform preconstruction surveys
- Relocate plants
- Take photographs
- Complete reports



# Environmental Stewardship: RE Responsibilities **Mid**-Construction

---



*If required by your environmental docs or permits ...*

- Confirm operations comply with permit dates
- Confirm contractor adhering to daily time restrictions



# Environmental Stewardship: RE Responsibilities **Mid**-Construction

---



*If required by your environmental docs or permits ...*

- Verify archeological or biological monitors are present
- Verify biological surveys are continuing as required throughout operations



# Environmental Stewardship: RE Responsibilities **Mid**-Construction

---



*If required by your environmental docs  
or permits, verify...*

- Approved hauling routes are used
- Borrow and disposal site requirements are followed



# Environmental Stewardship: RE Responsibilities **Mid**-Construction

---



*If required by your environmental docs  
or permits, verify...*

- Dust control measures are implemented
- Daily clean up and garbage disposal occurs



# Environmental Stewardship:

## RE Responsibilities **Pre, Mid, and Post**-Construction

---



**Document Environmental Mitigation Commitment Compliance** throughout the project!

File:

- Letters approving biological monitors
- Invoices supporting payments made to contractor for water quality testing





# Environmental Stewardship:

## RE Responsibilities **Pre, Mid, and Post**-Construction

---



**Document Environmental Mitigation Commitment Compliance** throughout the project!

- Sign in sheets from required crew trainings
- Photos of ESA fencing
- Daily reports documenting mitigation work



# Environmental Stewardship: RE Responsibilities **Post**-Construction

---



If required...

- Confirm all monitoring reports and post-construction mitigation report(s) were submitted to permitting agencies
- Prepare additional copies to be included with the final report/voucher submitted to Caltrans



# Environmental Stewardship Poll

---





# Environmental Stewardship: Quiz

---



**Choose all true statements.**

**NEPA...**

- a. Stands for National Environmental Protection Agency**
- b. Stands for National Environmental Policy Act**
- c. Is something you put on a sunburn**
- d. Is U.S. Law established by Congress**



# Environmental Stewardship: Quiz

---



**Choose all true statements.**

**NEPA...**

- a. Stands for National Environmental Protection Agency**
- b. Stands for National Environmental Policy Act**
- c. Is something you put on a sunburn**
- d. Is U.S. Law established by Congress**



# Environmental Stewardship Poll

---





# Environmental Stewardship: Quiz

---



## True or False

**All federal aid projects will have one of the following three types of environmental documents:**

- **Categorical Exclusion**
- **Environmental Assessment with FONSI**
- **Environmental Impact Statement with ROD**



# Environmental Stewardship: Quiz

---



## True or False

**All federal aid projects will have one of the following three types of environmental documents:**

- **Categorical Exclusion**
- **Environmental Assessment with FONSI**
- **Environmental Impact Statement with ROD**

**True**





# Environmental, WPC, and Public Relations Poll:





# Environmental Stewardship: Quiz

---



**Choose the correct answer.**

**If a mitigation measure listed in the California Department of Fish and Wildlife Permit for your project is not included in your contract plans and specifications...**

- a. It probably wasn't needed.**
- b. The RE needs to write a CCO.**
- c. Someone is in trouble with Fish and Wildlife.**
- d. Both b and c**



# Environmental Stewardship: Quiz

---



**Choose the correct answer.**

**If a mitigation measure listed in the California Department of Fish and Wildlife Permit for your project is not included in your contract plans and specifications...**

- a. It probably wasn't needed.**
- b. The RE needs to write a CCO.**
- c. Someone is in trouble with Fish and Wildlife.**
- d. Both b and c**

**Generally not a problem if you catch the issue before the contract work involved is performed.**



# Pre-Construction Preparation: Poll





# Environmental Stewardship: Quiz

---



**Choose the statement that is the least correct.**

- a. Documenting the performance of environmental commitments is almost as important as performing them.**
- b. Monitoring of environmental commitments continues throughout the life of the project.**
- c. Documenting the performance of environmental commitments is most efficiently completed at the end of the project when all the work is done.**



# Environmental Stewardship: Quiz

---



**Choose the statement that is the least correct.**

- a. Documenting the performance of environmental commitments is almost as important as performing them.**
- b. Monitoring of environmental commitments continues throughout the life of the project.**
- c. Documenting the performance of environmental commitments is most efficiently completed at the end of the project when all the work is done.**

**Document throughout the life of the project!**



---

# Water Pollution Control



# Water Pollution Control: Objectives

---



## Be able to ...

1. Name the federal and state laws that mandate the prevention of water pollution
2. Understand the basic requirements of a WPCP or SWPPP
3. Implement water pollution control practices
4. List required WPC documents





# Water Pollution Control: Federal Laws and Regulations

---



## Clean Water Act (CWA) of 1972

***...to restore and maintain the...integrity  
of the nation's waters by preventing  
...pollution sources, ... and maintaining  
the integrity of wetlands.***



# Water Pollution Control: Federal Laws and Regulations

---



## Clean Water Act (CWA) of 1972 and 1978

Unlawful to discharge any pollutant from  
**a point source** into navigable waters,  
unless a permit was obtained.



# Water Pollution Control: Federal Laws and Regulations

---



## Clean Water Act (CWA) 1987 Amendment

Unlawful to discharge any **Storm Water** into navigable waters, unless a permit was obtained.



# Water Pollution Control: Federal Laws and Regulations

---



**What is the permit required by the  
Clean Water Act?**

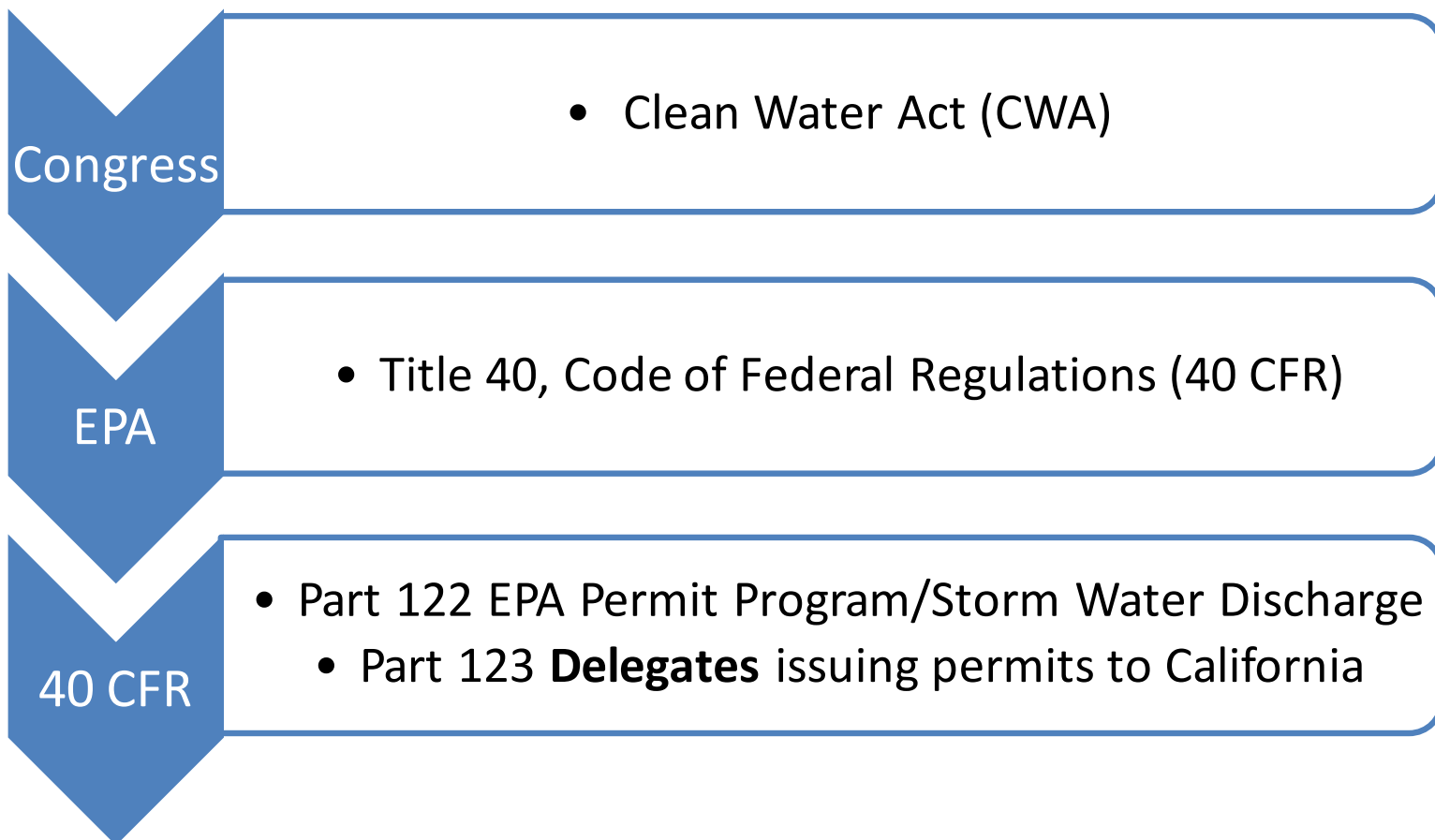
***National Pollutant Discharge Elimination System***  
**(NPDES) Permit**



# Water Pollution Control: Federal Laws and Regulations



## The Relationship between CWA, EPA and You





# Water Pollution Control: Federal Laws and Regulations

---



## **What projects need NPDES Permit?**

Projects whose construction activities disturb one (1) or more acre of soil

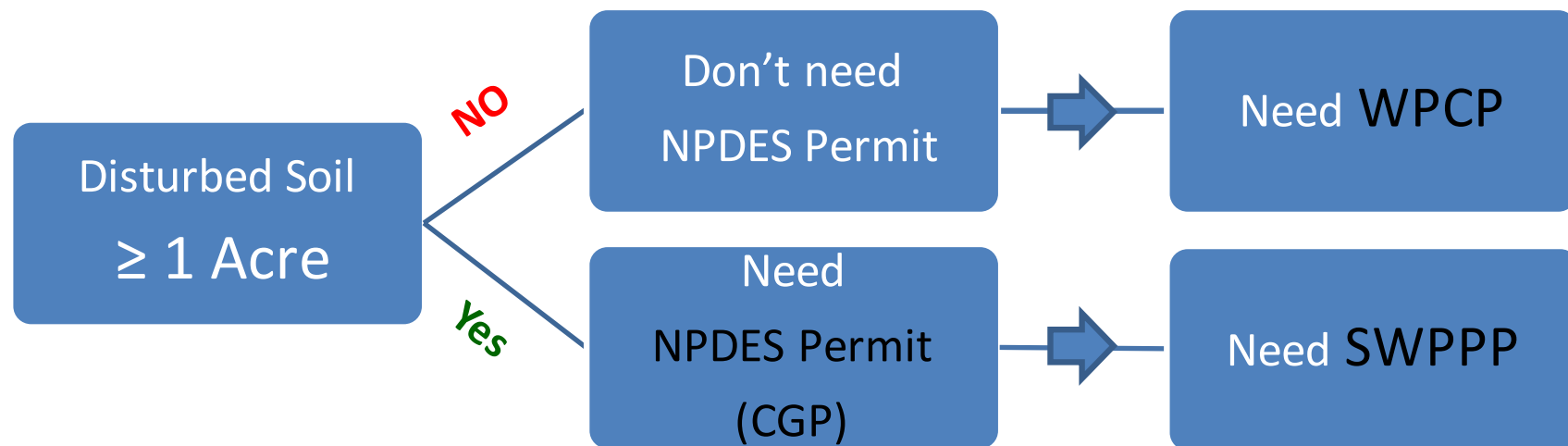
- Clearing
- Grading
- Excavation
- Stockpiling



# Water Pollution Control: Federal Laws and Regulations



## The Two Levels of WPC:





# Water Pollution Control: NPDES

---



To **obtain coverage** under the NPDES/CGP, the discharger must:

1. File Permit Registration Documents (PRDs)
  - a) Notice of Intent (NOI)
  - b) Storm Water Pollution Prevention Plan (SWPPP)
  - c) Other docs required
2. Pay permit fee





# Water Pollution Control: NPDES



## *Water Boards Storm Water Multiple Application & Report Tracking System 2*

### Welcome to Storm Water Multiple Application and Report Tracking System - SMARTS!

The Storm Water program regulates storm water discharges from locations such as industrial facilities, construction sites, and small linear projects. The Storm Water program is also responsible for processing, reviewing, updating, terminating Notices of Intent (NOIs), annual reports, and maintaining the billing status of each discharger.

SMARTS has been developed to provide an online tool to assist dischargers in submitting their NOIs, NECs, NOTs, and Annual Reports, as well as, viewing/printing Receipt Letters, monitoring the status of submitted documents, and viewing their application/renewal fee statements. The system will also allow the Regional Board and State Board staff to process and track the discharger submitted documents.

To submit the **Industrial Annual Report** in SMARTS, please fill out the [LRP Registration Form](#) and mail it to:

SWRCB  
Storm Water Section  
PO Box 1977  
Sacramento, CA 95812-1977

SMARTS is a user account and password protected system where a valid user account and password is needed to access the system. To create an account, please click the "Sign Up" button on the right side of the screen.

If you have any questions or for further assistance, please call State Water Board Staff at: 1-866-563-3107 Monday thru Friday 8:00AM - 5:00PM, or email [stormwater@waterboards.ca.gov](mailto:stormwater@waterboards.ca.gov)

[Back to Top](#) | [Help](#) | [Contact Us](#) | [Site Map](#)

### SMARTS LOGIN

**Best Used in Internet Explorer**

User ID:

Password:

Login

New User, Start here:

Sign Up [Help](#)

Forgot User ID or password?  
[Click here](#)

Public Access to NOI, SWPPPs &  
Annual Reports data

View SW Data

<https://Smarts.waterboards.ca.gov/smarts/SwSmartsLogin.jsp>



# **Water Pollution Control: Federal Laws and Regulations**

---



**Who monitors WPC and issues NPDES permits in CA?**

- State Water Resources Control Board (SWRCB)
- Regional Water Quality Control Board (RWQCB)



# Water Pollution Control: Implementation

---



**Where WPC (WPCP and SWPPP) must be implemented at:**

- Project site
- Support facilities
  - Staging areas
  - Storage yards
  - Mobile operations
  - Batch plants for PCC and HMA
  - Crushing plants for rock and aggregate
  - Haul roads



# Water Pollution Control: Implementation

---



## SWPPP or WPCP

### **Before the work starts:**

- Designate staff as storm water inspector
- Review contract and RE file
- Discuss WPC requirements at pre-job



# Water Pollution Control: Implementation

---



## SWPPP or WPCP

**Before the work starts, review and accept the contractor's SWPPP or WPCP.**

**The contractor must:**

- Provide a WPC manager
- Conduct water pollution control training
- Monitor, inspect, correct WPC practices



# Water Pollution Control: Implementation

---



## SWPPP or WPCP

**Before the work starts, ensure that the contractor:**

- Includes support facilities in plan
- Submits Notice of Intent approved by the RWQCB
- Trains employees

# Water Pollution Control: Implementation

---



## SWPPP or WPCP

- Verify copy of plan is on site
- Ensure BMPs are in place as required
- Confirm qualifications of Contractors WPC

Manager:

– SWPPP → QSD

– WPCP → QSP



# Water Pollution Control: Implementation

---



## SWPPP Only

- Confirm a Waste discharge **ID number** is issued prior to start of project
- Storm Water **Annual Report** is submitted (Sept.)





# Water Pollution Control: Implementation

---



**During construction, ensure the contractor:**

- Performs inspections
- Submits reports
- Repairs/replaces damaged BMPs
- Reports discharges
- Samples (SWPPP only)



# Water Pollution Control: Implementation

---



**During construction, ensure the contractor:**

- Stabilizes soil
- Controls sediment
- Prevents tracking
- Uses concrete washouts



# Water Pollution Control: Implementation

---



**During construction, ensure the contractor performs dewatering properly:**

1. Follows *CT Field Guide for Construction Site Dewatering*
2. Causes no erosion, scour, sedimentary deposits
3. Discharges within the project limits
4. Does NOT discharge water that has odor, oily sheen, foam



# Water Pollution Control: Resources

---



- Chap. 13, WPC, CTSS 2015
- CT manuals
- CT Stormwater and Water Pollution Control website
- Storm Water Pollution Prevention training courses



# Water Pollution Control: Resources

---



## CT Manuals:

- Storm Water Management Enforcement Guidance
- Field Guide for Construction Site Dewatering
- SWPPP- WPCP Preparation
- Construction Site BMPs
- Chapter 7, CT CM



- » [Construction Home](#)
- » [Contractor Payments](#)
- » [iEWB System](#)
- » [Construction Manual](#)
- » [Construction Forms](#)
- » [GoCalifornia Industry Capacity Expansion \(ICE\)](#)
- » [Build California](#)
- » [Hot Mix Asphalt Construction \(HMA\)](#)
- » [Construction Districts](#)
- » [Contact Construction](#)

[Caltrans](#) > [Business](#) > [Construction](#) > [Stormwater](#)

## Stormwater and Water Pollution Control

### ABOUT STORMWATER AND WATER POLLUTION CONTROL



Caltrans has a comprehensive program for preventing water pollution. Caltrans has developed a number of resources to assist contractors in their preparation of these documents. Caltrans has Board (SWRCB) approval of numerous Best Management Practices.

Caltrans water pollution control manuals provide direction on how to develop a Water Pollution Control Program (WPCP). Electronic templates of these documents are available for contractors to use in their preparation of these documents. Caltrans has Board (SWRCB) approval of numerous Best Management Practices.

Copies of Caltrans training documents, other training resources, and construction contractor's implementation of Caltrans water pollution control requirements are available.

### RELATED LINKS

- » [Stormwater Main Page](#)
- » [Map of Ongoing Construction Projects](#)
- » [Construction Compliance Evaluation Plan](#)

"At this time there is no additional stormwater management training requirement for Water Pollution Control Program (WPCP) preparation."

- » [SWPPP-WPCP Preparation Manual June 2011](#) [pdf]
- » [Download SWPPP Template \(6-11-2012\)](#) [doc]
- » [Download WPCP Template \(4-5-2012\)](#) [doc]

<http://www.dot.ca.gov/hq/construc/stormwater/>



# Water Pollution Control:



Travel



Work with Caltrans



Programs



Caltrans Near Me



Search

[Home](#) | [Programs](#) | [Environmental Analysis](#) | [Stormwater Management Program](#)

## Stormwater Management Program

The California Department of Transportation Stormwater Management Program (SW Program) complies with National Pollutant Discharge Elimination System (NPDES) Statewide Storm Water Permit Waste Discharge Requirements Order Number 2012-0011-DWQ, NPDES Number CAS000003. The SW Program provides statewide policy direction, technical and regulatory information, guidance documents, specifications, and funding to integrate appropriate stormwater control activities. The SW Program provides water quality monitoring, best management practices development along with implementing guidance and tools.

Links below marked with \*\* redirect to CA State Water Board Resources website.

[Contact Stormwater Management Program](#)

## Forms & Templates

- [Monitoring Station ID Request \(XLS\)](#) (October 2018)
- [Water Quality Assessment Report Template \(DOCX\)](#) (October 2017)
- [Water Quality Scoping Questionnaire \(DOCX\)](#) (February 2010)

## Manuals

- [Caltrans Stormwater Monitoring Guidance Manual \(PDF\)](#) (August 2020)
- [Project Planning and Design Guide](#) (July 2017)

## Permits

- [Construction General Permit \\*\\*](#)

## Reports

- [Stormwater Reports](#)

## Resources

- [Regional Water Quality Control Boards \\*\\*](#)
- [Sacramento State Office of Water Programs](#)
- [Stormwater Management Plan \(PDF\)](#)
- [Protect Every Drop - Public education campaign](#)
- [Division of Maintenance Stormwater Program](#)
- [Division of Design Stormwater Program](#)
- [Division of Construction Stormwater Program](#)
- [Local Agency Guidance for Cooperative Agreements \(PDF\)](#)

## Tools

- [Water Quality Planning Tool](#)
- [Caltrans TMDL Tool \(XLSM\)](#)

<https://dot.ca.gov/programs/environmental-analysis/stormwater-management-program>



# Water Pollution Control: Documents

---



## **WPC Project File Documents:**

- SWPPP or WPCP
- Contractor's weekly Site Inspection Reports
- Notice of Discharge Reports
- All correspondence related to WPC





# Water Pollution Control: Documents

---



## **WPC Project File Documents (cont.):**

- RE/Asst. RE Inspection Reports
- Copies of Certifications required by specs
- SMARTS printout after filing NOT



# Water Pollution Control Quiz

---





# Water Pollution Control: Quiz

---



## True or False

**The Clean Water Act and Title 40 of the CFRs require projects that disturb *1 acre or more* of soil be covered under the NPDES Construction General Permit, and to develop a SWPPP.**



# Water Pollution Control: Quiz

---



## True or False

**The Clean Water Act and Title 40 of the CFRs require projects that disturb *1 acre or more* of soil be covered under the NPDES Construction General Permit, and to develop a SWPPP.**

**True**



# Water Pollution Control Quiz

---





# Water Pollution Control: Quiz

---



**Choose the most correct statement:**

- a. A project that disturbs less than 1 acre does not require WPC.**
- b. A project that disturbs less than 1 acre requires a SWPPP.**
- c. A project that disturbs less than 1 acre requires a WPCP.**
- d. A project that disturbs less than 1 acre requires a SWPPP and a WPCP.**



# Water Pollution Control: Quiz

---



**Choose the most correct statement:**

- a. A project that disturbs less than 1 acre does not require WPC.
- b. A project that disturbs less than 1 acre requires a SWPPP.
- c. **A project that disturbs less than 1 acre requires a WPCP.**
- d. A project that disturbs less than 1 acre requires a SWPPP and a WPCP.



# Water Pollution Control Quiz

---







# Water Pollution Control: Quiz

---



## True or False

**The RE is responsible to develop and implement the SWPPP, and monitor, inspect and correct water pollution control practices.**



# Water Pollution Control: Quiz

---



## True or False

**The RE is responsible to develop and implement the SWPPP, and monitor, inspect and correct water pollution control practices.**

**False**

**The *contractor* is responsible. The RE ensures the contractor is doing these things and takes action if not.**



---

# Public Relations



# Public Relations: Objectives

---



## Be able to:

1. List the relationships the RE must maintain
2. Know key points for maintaining each



# Public Relations: Stakeholders

---



## RE relationships:

- Contractor
- Utilities
- Other agencies
- Property owners and businesses
- General public



# Public Relations: Stakeholders

---



## **RE relations with contractor:**

- Know your plans and specifications
- Administer the contract firmly to start
- Ensure the rights of the agency and the contractor are equally and impartially enforced
- Protect the rights of unsuccessful bidders



# Public Relations: Stakeholders

---



## **RE relations with contractor:**

- Establish clear communication expectations
- Have an issue resolution/escalation process
- Hold regular meetings
- Don't "surprise" the contractor
- Don't write anything you would not say face to face



# Public Relations: Stakeholders

---



## **RE relations with utilities and other governmental agencies:**

### **Who:**

- Utilities
- Permitting agencies
- Law enforcement
- Emergency services
- Other?

### **What:**

- Early personal contact
- Pre-construction meetings
- Regular updates
- Knowledge of operations and schedule





# Public Relations: Stakeholders

---



## **RE relations with property owners and businesses:**

- Make early proactive contact
- Communicate schedule
- Explain operations
- Listen to problems, requests, questions
- Acknowledge concerns and issues
- Utilize CCOs
  - Reschedule
  - Relocate



# Public Relations: Stakeholders

---



## RE relations with general public:

- Contact your Public Information Officer
- Utilize:
  - Press releases
  - Paper/TV/radio/Twitter
  - Internet website
  - Pamphlets
  - CMS
- Communicate early and often
- Speak at Chamber or Service Club meetings



# Environmental Stewardship/ Public Relations Exercise

(Handout Pg. 1)

