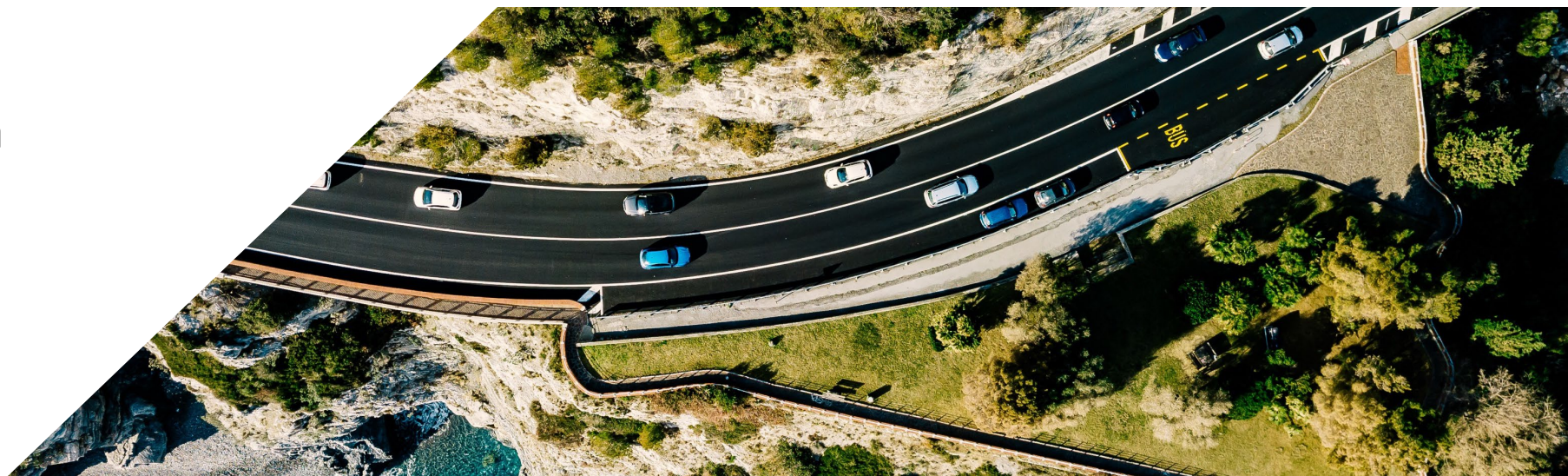


# CALIFORNIA TRANSPORTATION PLAN 2050



July, 2021

PRESENTED BY  
Ryan Carrillo-Kovach



# AGENDA

---

◆ CTP BACKGROUND

◆ IMPLEMENTATION FRAMEWORK





**CTP**  
**BACKGROUND**

# CTP 2050 GOALS

---



**Safety**  
Provide a safe and secure transportation system



**Climate**  
Achieve statewide GHG emissions reduction targets and increase resilience to climate change



**Equity**  
Eliminate transportation burdens for low-income communities, communities of color, people with disabilities, and other disadvantaged groups



**Accessibility**  
Improve multimodal mobility and access to destinations for all users



**Quality of Life & Public Health**  
Enable vibrant, healthy communities



**Economy**  
Support a vibrant, resilient economy



**Environment**  
Enhance environmental health and reduce negative transportation impacts



**Infrastructure**  
Maintain a high-quality, resilient transportation system



# CTP 2050 RECOMMENDATIONS



1 Expand access to safe and convenient active transportation options



2 Improve transit, rail, and shared mobility options



3 Expand access to jobs, goods, services, and education



4 Advance transportation equity



5 Enhance transportation system resiliency



6 Enhance transportation safety and security



7 Improve goods movement systems and infrastructure



8 Advance Zero-Emissions Vehicle (ZEV) technology and supportive infrastructure



9 Manage the adoption of connected and autonomous vehicles



10 Price roadways to improve the efficiency of auto travel



11 Encourage efficient land use



12 Expand protection of natural resources and ecosystems



13 Strategically invest in state of good repair improvements

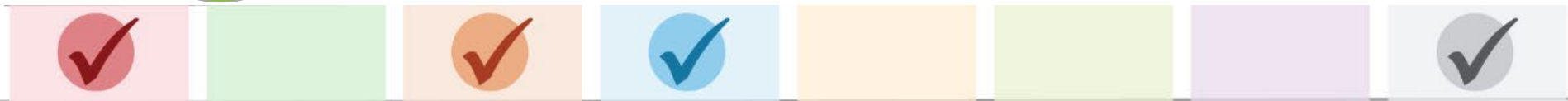


14 Seek sustainable, long-term transportation funding mechanisms

# GOALS TO RECOMMENDATIONS

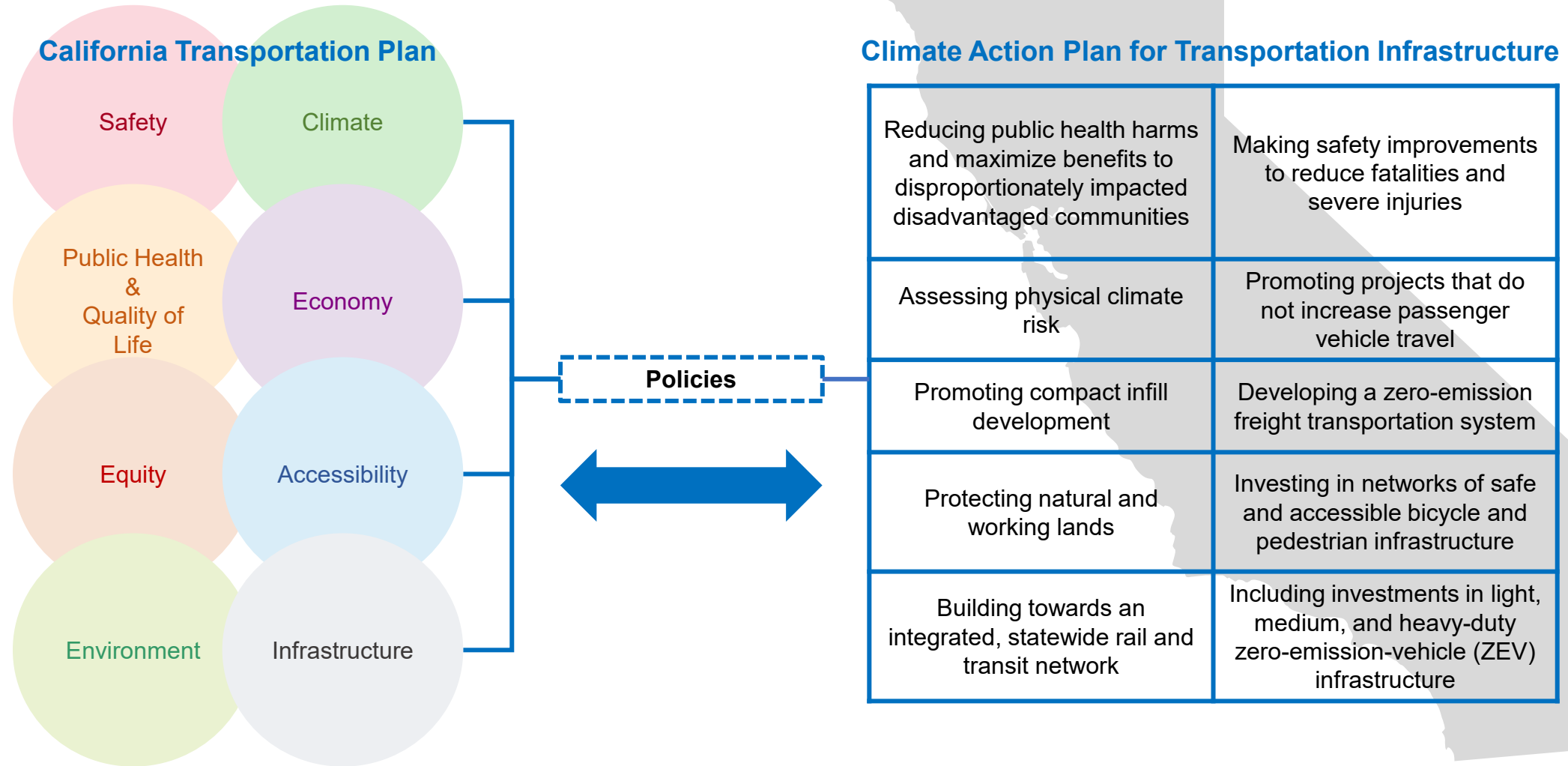


Expand Access to Safe and Convenient Active Transportation Options



Strategically Invest in State of Good Repair Improvements

# CTP 2050 & CAPTI



# IMPLEMENTATION FRAMEWORK





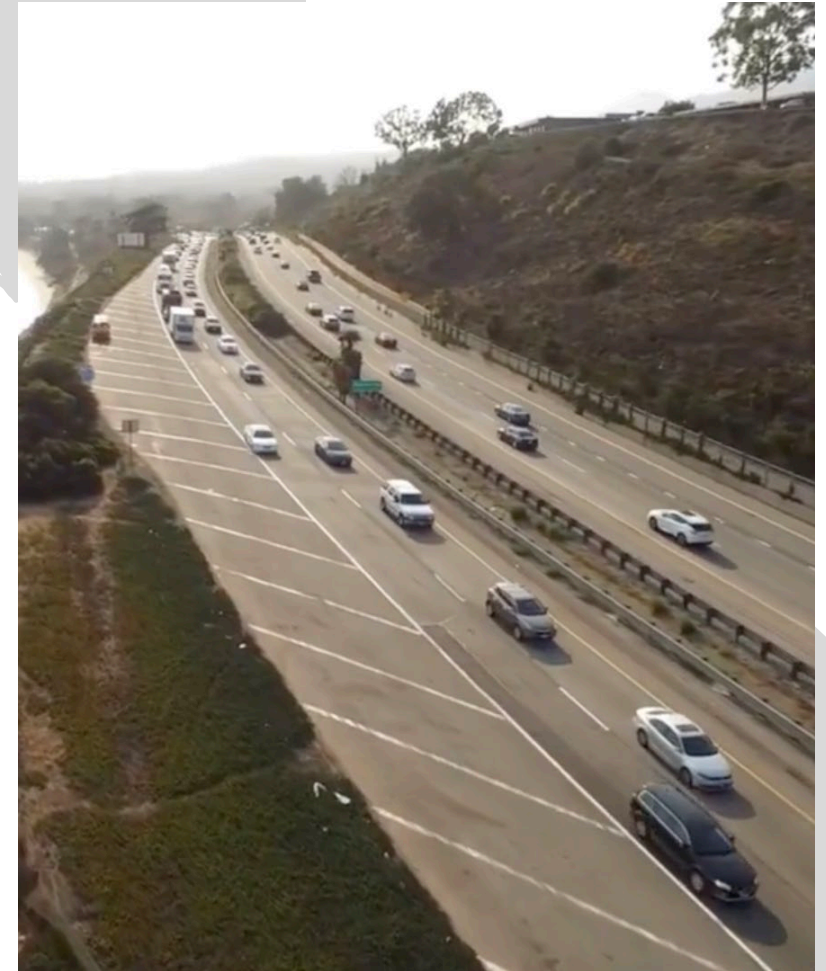
# ONGOING COLLABORATION



- ◆ The Division of Transportation Planning (DOTP) will continue to utilize a public engagement process to solicit stakeholder input during our CTP implementation rollout.
- ◆ Expand into workgroups made up of internal and external staff to help guide our CTP implementation efforts.
- ◆ Regularly convene with stakeholders to analyze any key findings of results on implementation reporting.

# ANNUAL IMPLEMENTATION REPORT

- ◆ Key findings and ongoing statewide activities for CTP implementation will be documented into an annual progress report – each recommendation will have a subsection on its own progress.
- ◆ The Implementation Progress Report will become a statewide tool used to monitor the success of the CTP 2050 implementation of recommendations.



# MONITOR PERFORMANCE MEASURES



- ◆ In addition to public engagement, performance measure (PM) monitoring will be used as a tool for analysis to monitor if the recommendations are **successful in achieving** the CTP goals.
- ◆ The progress report will use statewide datasets that are well documented, regularly maintained, and **readily accessible**.
  - ◆ For example, there are statutorily defined targets for Federal Performance Measures concerning traffic Safety (i.e., number of annual fatalities).

# QUESTIONS?

or you can submit your questions to [John.Thurston@dot.ca.gov](mailto:John.Thurston@dot.ca.gov)

A decorative graphic consisting of several overlapping triangles in various shades of blue, arranged in a pattern that resembles a stylized 'X' or a cluster of geometric shapes.

THANK YOU.