



CALTRANS TRANSPORTATION EQUITY INDEX

INFORMATION SESSION #1
SEPTEMBER 2022

NON-DISCRIMINATION POLICY STATEMENT



The California Department of Transportation, under Title VI of the Civil Rights Act of 1964, ensures *“No person in the United States shall, on the ground of race, color, or national origin, be excluded from participation in, be denied the benefits of, or be subjected to discrimination under any program or activity receiving federal financial assistance.”*

Caltrans will make every effort to ensure nondiscrimination in all of its services, programs and activities, whether they are federally funded or not, and that services and benefits are fairly distributed to all people, regardless of race, color, or national origin. In addition, Caltrans will facilitate meaningful participation in the transportation planning process in a nondiscriminatory manner.

Related federal statutes, remedies, and state law further those protections to include sex, disability, religion, sexual orientation, and age.

For information or guidance on how to file a complaint, or obtain more information regarding Title VI, please contact the Title VI Branch Manager at (916) 324-8379 or visit the following web page: <https://dot.ca.gov/programs/civil-rights/title-vi> .

DECLARACIÓN DE POLÍTICA DE NO DISCRIMINACIÓN



El Departamento de Transporte de California, bajo el Título VI de la Ley de Derechos Civiles de 1964, asegura que *“Ninguna persona en los Estados Unidos, debido a su raza, color u origen nacional, será excluída de participar, ni se le negarán los beneficios, o será objeto de discriminación, en ningún programa o actividad que reciba ayuda financiera federal.”*

Caltrans hará todos los esfuerzos para asegurar que no exista discriminación en ninguno de sus servicios, programas y actividades, ya sea que reciban fondos del gobierno federal o no, y que los servicios y beneficios sean justamente distribuidos a todas las personas sin importar su raza, color, u origen nacional. Adicionalmente, Caltrans facilitará la participación significativa en el proceso de planeación de los programas de transporte de manera no discriminatoria.

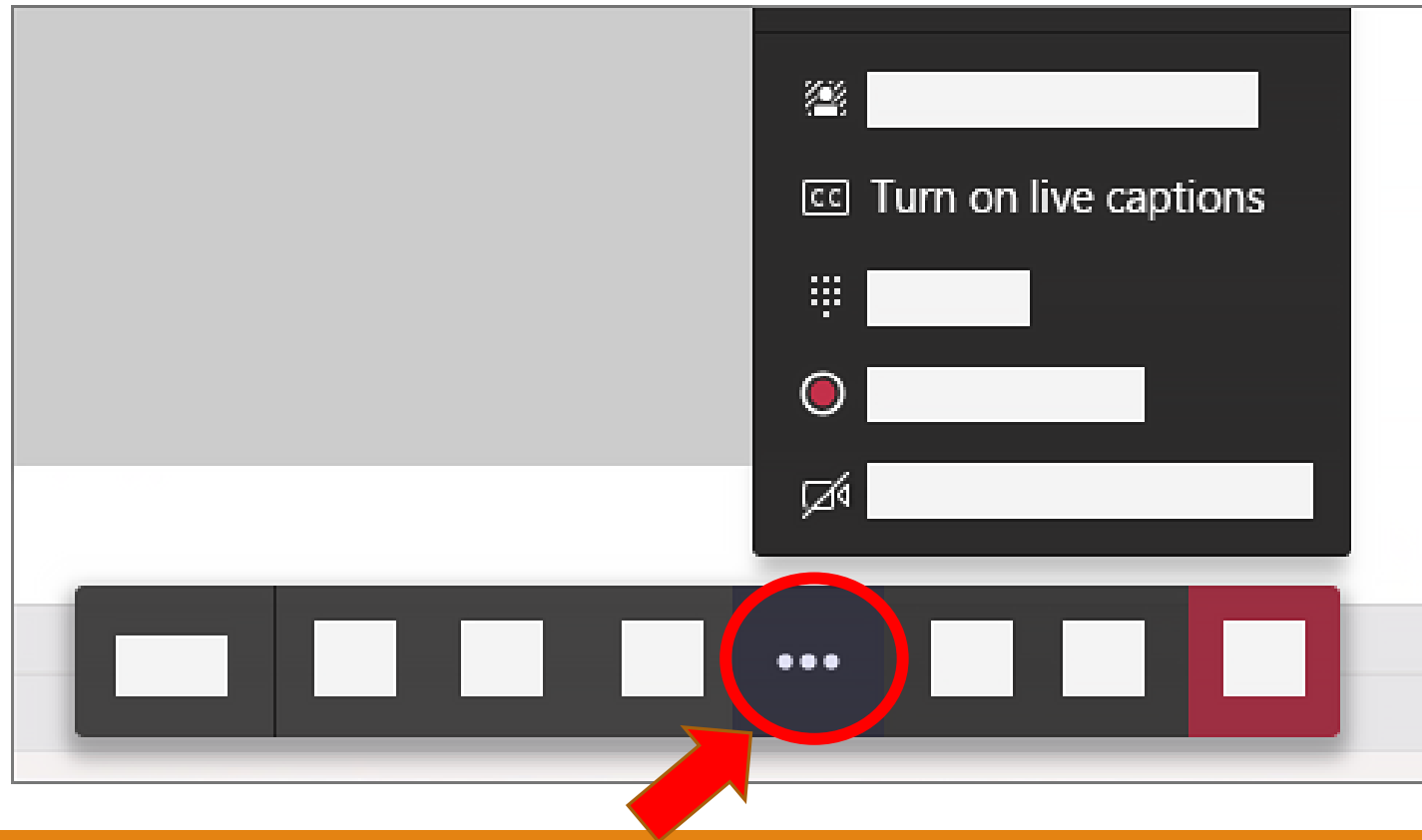
Los estatutos federales relacionados, los remedios, y la ley estatal refuerzan estas protecciones para incluir el sexo, la discapacidad, la religión, la orientación sexual y la edad.

Para información u orientación sobre cómo presentar una queja o para obtener más información relacionada con el Título VI, por favor comuníquese con el Gerente del Título VI al teléfono (916) 324-8379 o visite la siguiente página de Internet:

<https://dot.ca.gov/programs/civil-rights/title-vi>.

CLOSED CAPTIONS

Closed captions or live transcript can be accessed by the TEAMS platform



AGENDA

Overview

What is the EQI, and why is it being developed?

Data

What is the methodology for the three screens within the EQI?

Questions and Survey

We want to hear from you!

THE WHAT AND WHY OF EQI

Screening tool

Uses transportation-specific & socioeconomic indicators

Enables more granular analysis at Census block level

Identifies priority populations from a transportation perspective

Bridge the gap in existing tools to inform strategies for addressing inequities in the transportation system

EQI CONCEPT

Uses efficient tools and accessible data

Income and Race/Ethnicity (2020 U.S. Census)

Traffic proximity/volume data (Caltrans/USDOT)

Crash data (UC Berkeley Transportation Injury Mapping System, based on SWITRS) 2015 - 2019

Access to Destinations ("Accessibility") (Conveyal/Open-Source Data and Tools) 2019

Address shortcomings with spatial analysis

EQI uses Census blocks, which are more granular than tracts and block groups

Only includes variables with spatial significance

DESIRED AREAS FOR INPUT

Overarching concept

Underlying methodology and data sources

Thresholds of significance for indicators

Potential and desired use cases for Caltrans and other transportation agencies

EQI Indicators



DEMOGRAPHIC OVERLAY

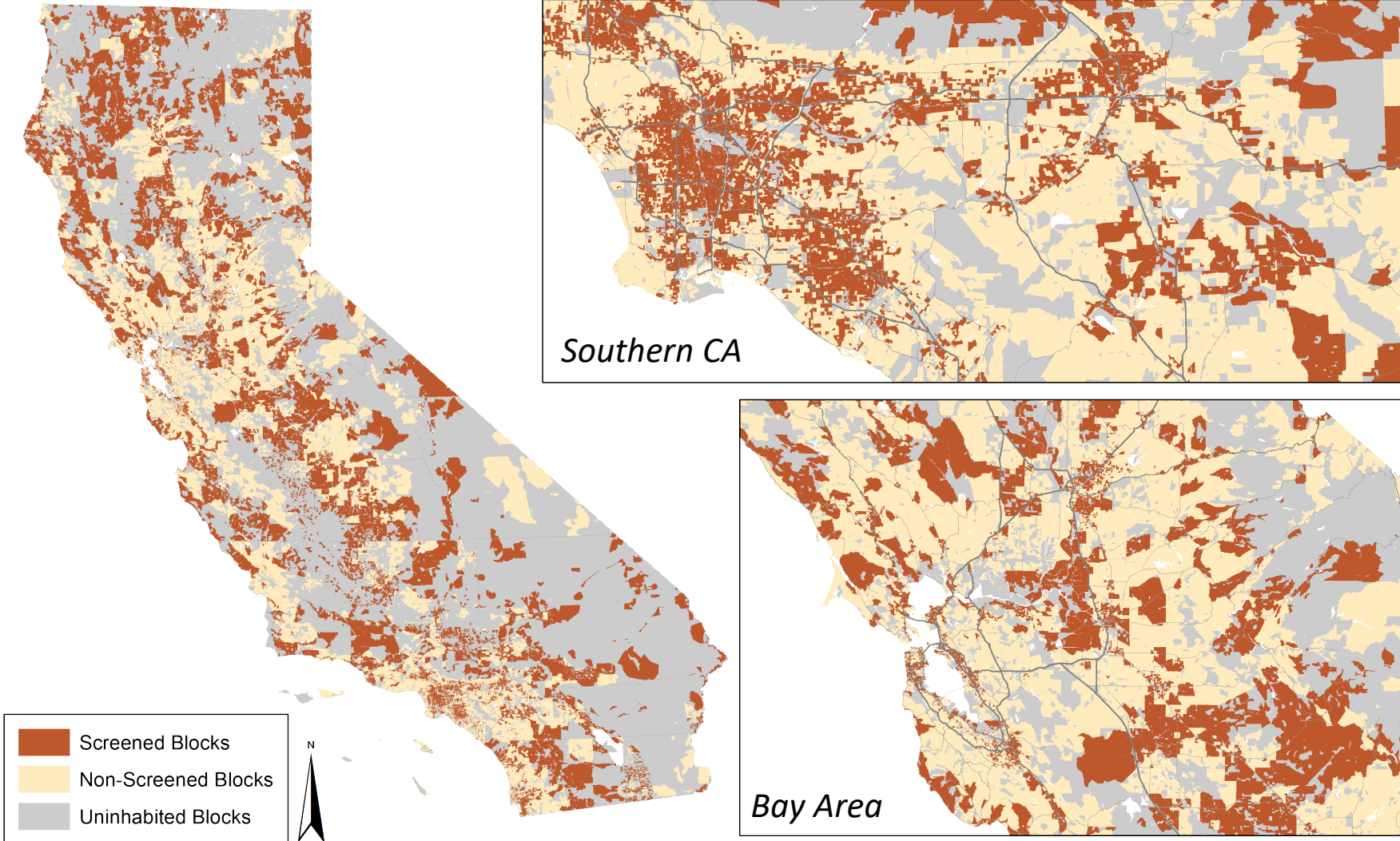
Block income is 1) at or below 80% statewide median household income (MHI), **OR** 2) MHI is at or below the 2022 county low-income limit established by the State Department of Housing and Community Development

OR

Race/ethnicity is greater than 50% non-white

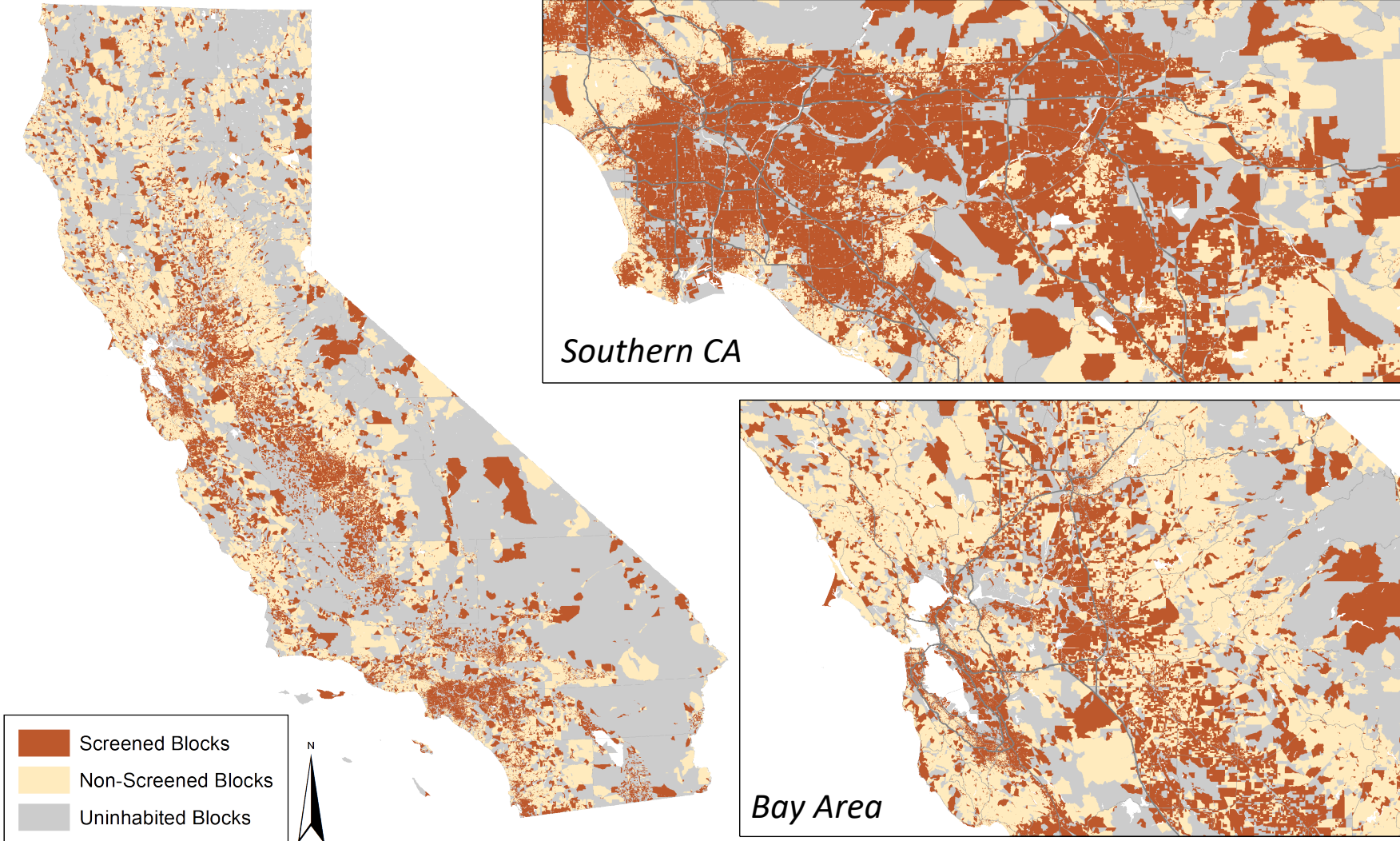
Income

Total Population Coverage: **51%**



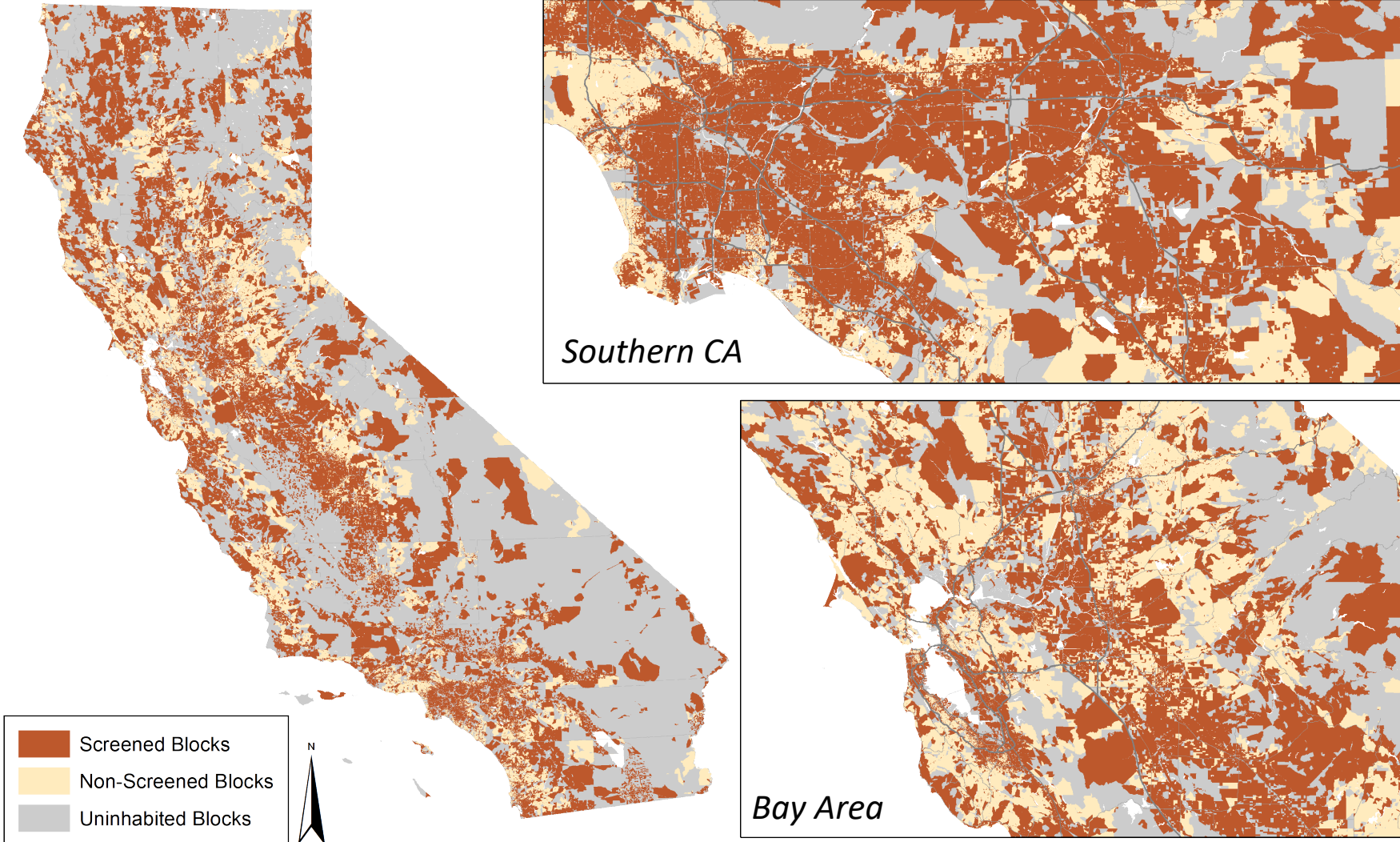
Race/Ethnicity

Total Population Coverage: **70%**



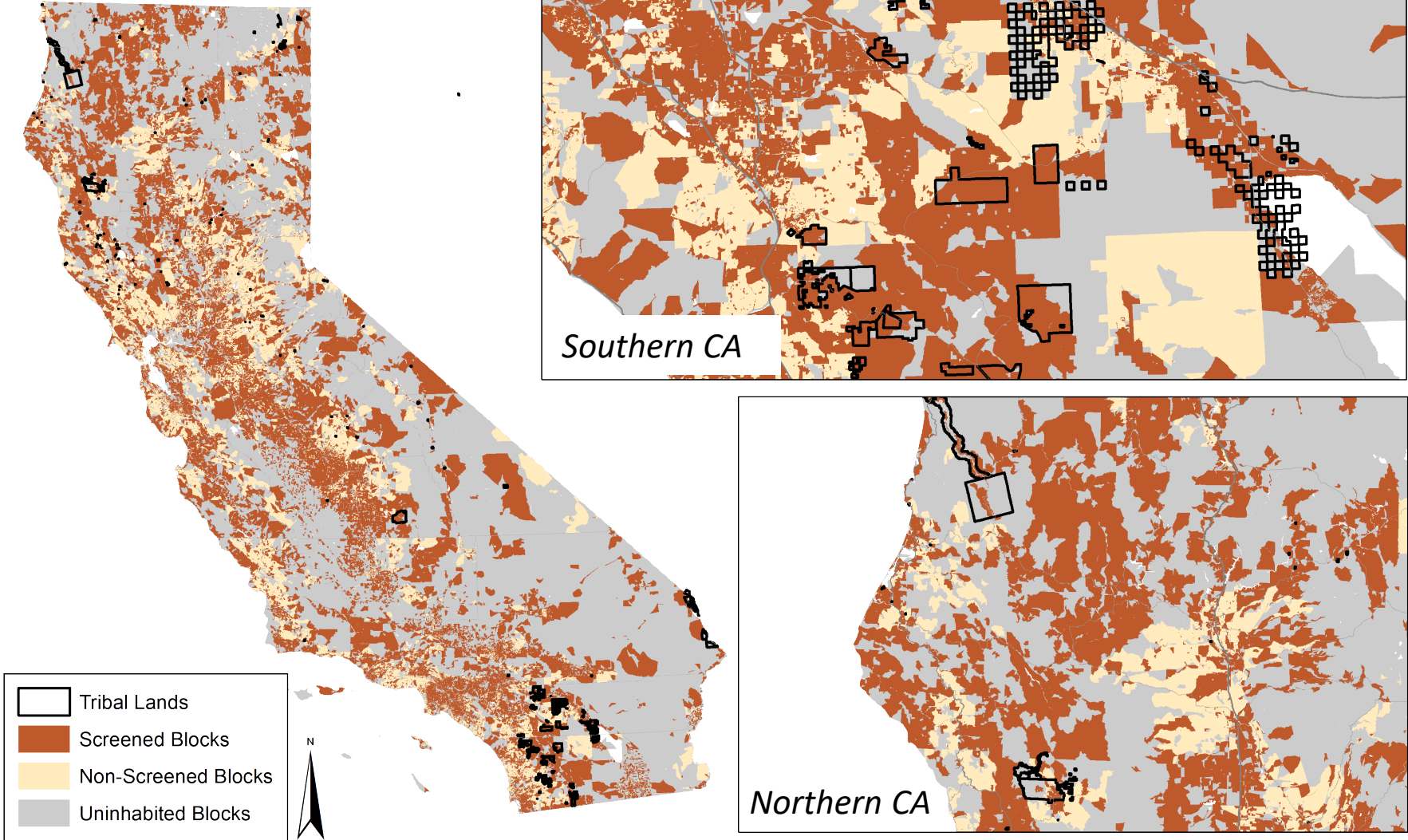
Demographic Overlay

Total Population Coverage: **79%**



Income
OR
Race/Ethnicity

Tribal Lands



TRAFFIC PROXIMITY AND VOLUME

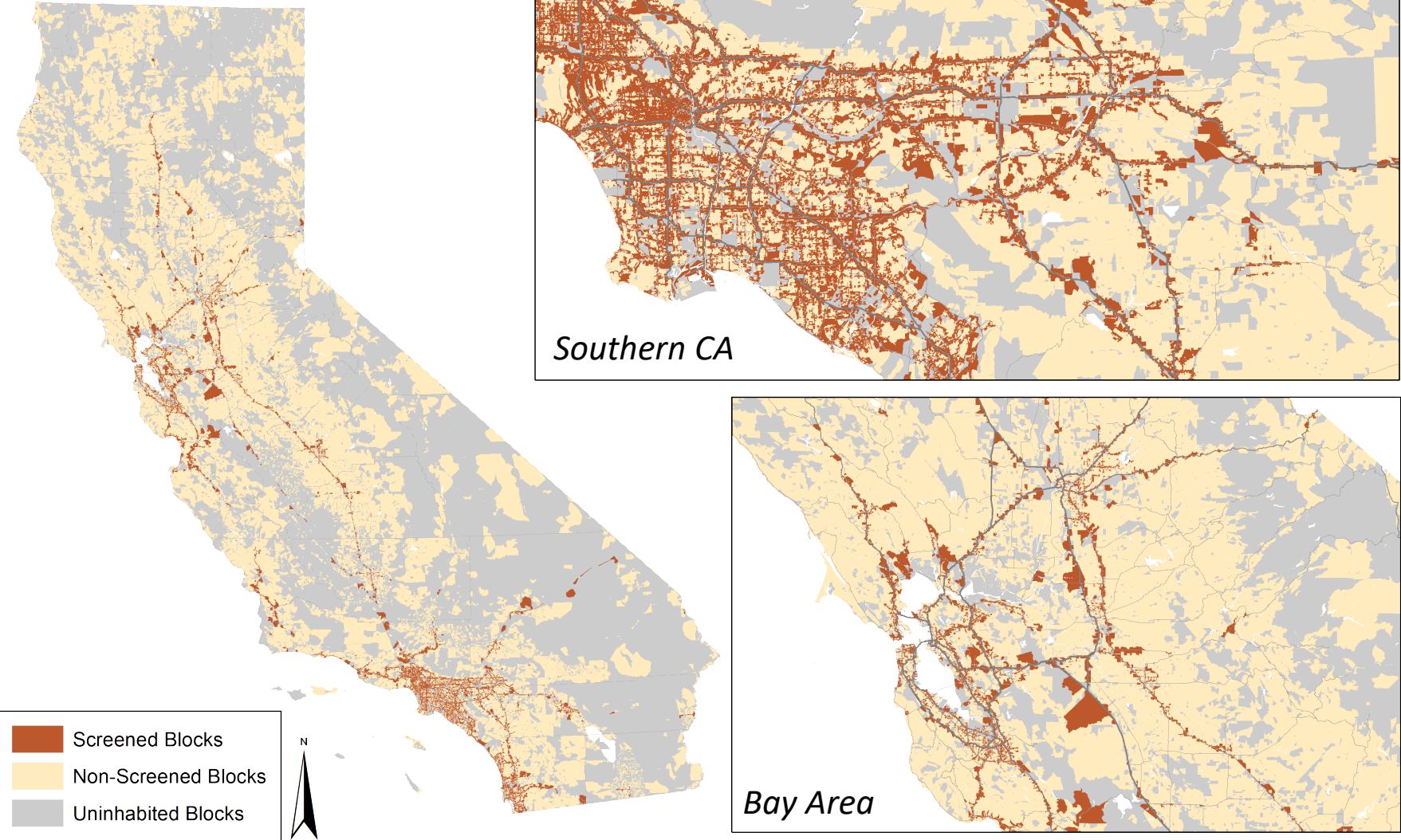
Traffic proximity and exposure is measured by the weighted amount of Annual Average Daily Traffic (AADT) that a block is exposed to

Truck AADT is weighted heavier than car AADT, reflecting higher emission levels and negative community health impacts

Traffic exposure is measured within 500 meters of highways and arterials, with blocks located closer to the traffic source weighted heavier

Traffic Proximity and Volume

Total Population Coverage: **32%**





CRASH EXPOSURE

Crash exposure is measured as the sum of weighted crashes within close-proximity of a given Census block

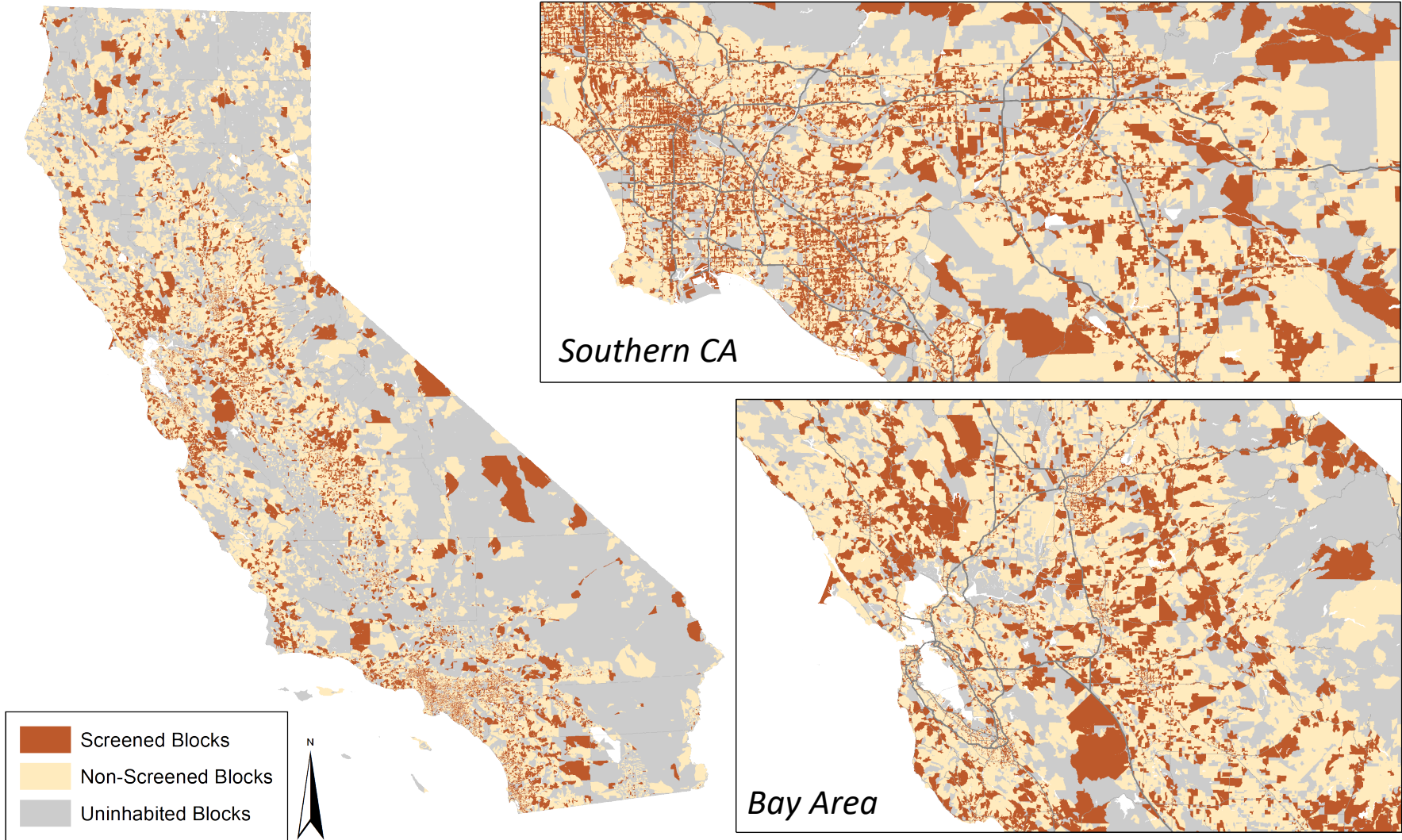
Crashes are weighted by the highest victim injury level, using factors derived from the Cal-BC model

Blocks with crash exposure scores above the 80th percentile are screened

Crashes occurring on controlled-access facilities are excluded since they have less of a direct impact on surrounding communities than crashes occurring on ramps, main street highways, and local roads

Crash Exposure

Total Population Coverage: **24%**





ACCESS TO DESTINATIONS

Accessibility is the ease in which destinations can be reached

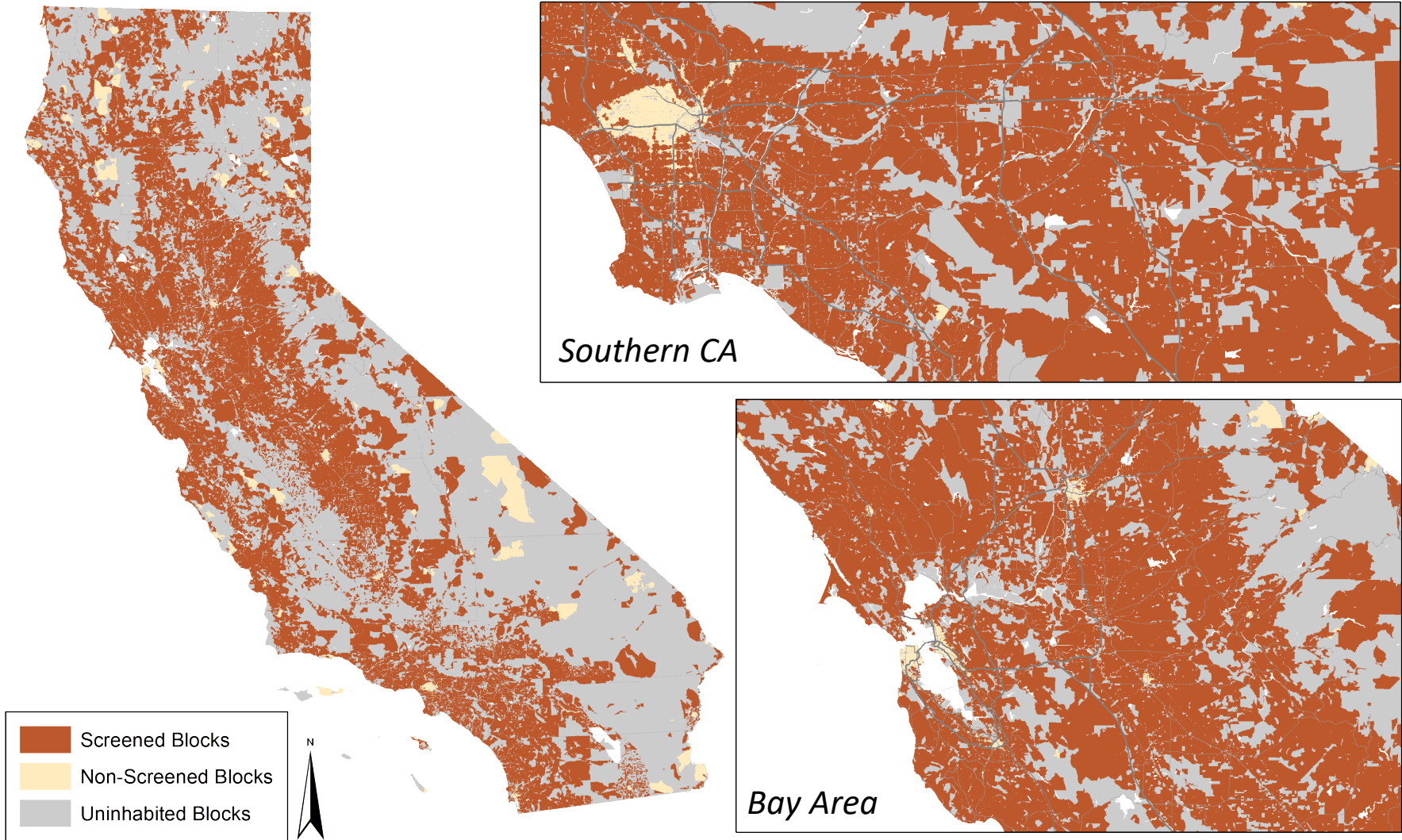
For the EQI, accessibility is measured as the ratio of transit + walking job accessibility to auto job accessibility.

Blocks with ratios at or below .2 are screened for inclusion.

This approach measures relative accessibility

Access to Destinations

Total Population Coverage: **86%**



Screening Scenarios

METHODOLOGY OF SCREENS

Demographics Overlay (includes income and race/ethnicity)

Traffic Exposure Screen

Access to Destinations Screen

Priority Populations Screen

EQI SCREENS

Demographic Overlay

Transportation Indicators

EQI Screens

Demographic
Overlay



Traffic Proximity and Volume
OR Crash Exposure



Traffic Exposure
Screen

Demographic
Overlay



Access to Destinations



Access to Destinations
Screen

Demographic
Overlay



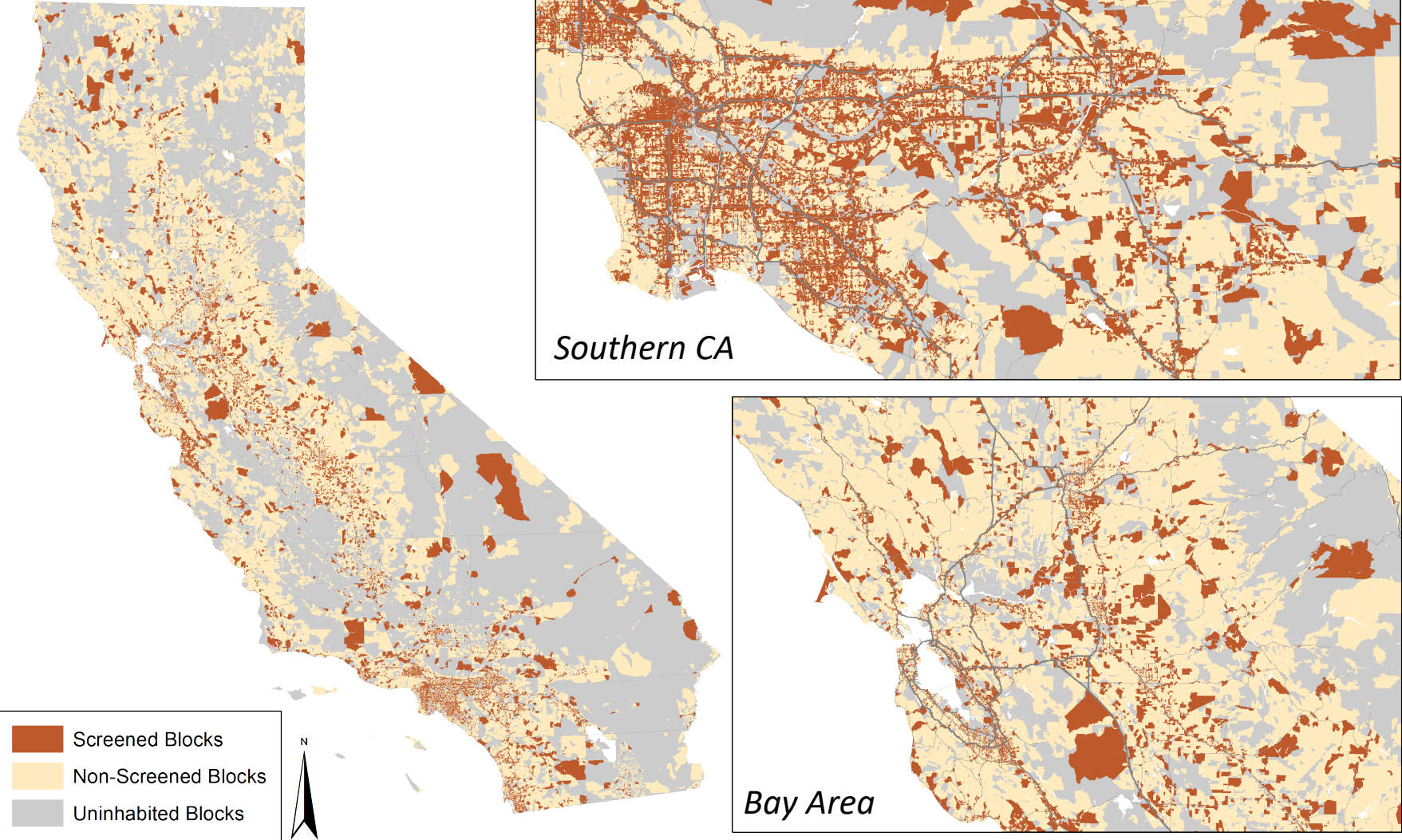
Traffic Proximity and Volume
OR Crash Exposure AND
Access to Destinations



Priority Populations
Screen

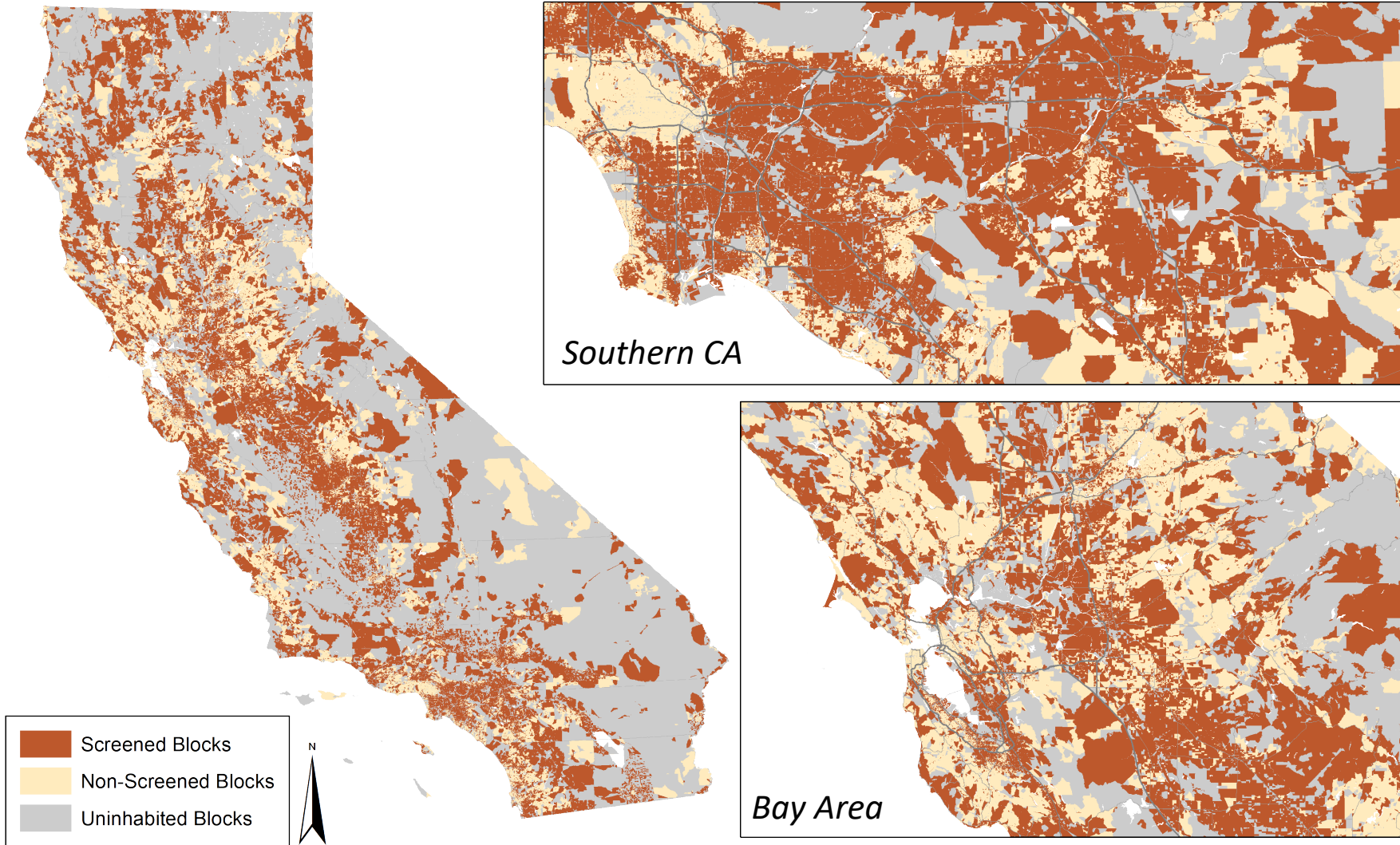
Traffic Exposure Screen

Total Population Coverage: **33%**



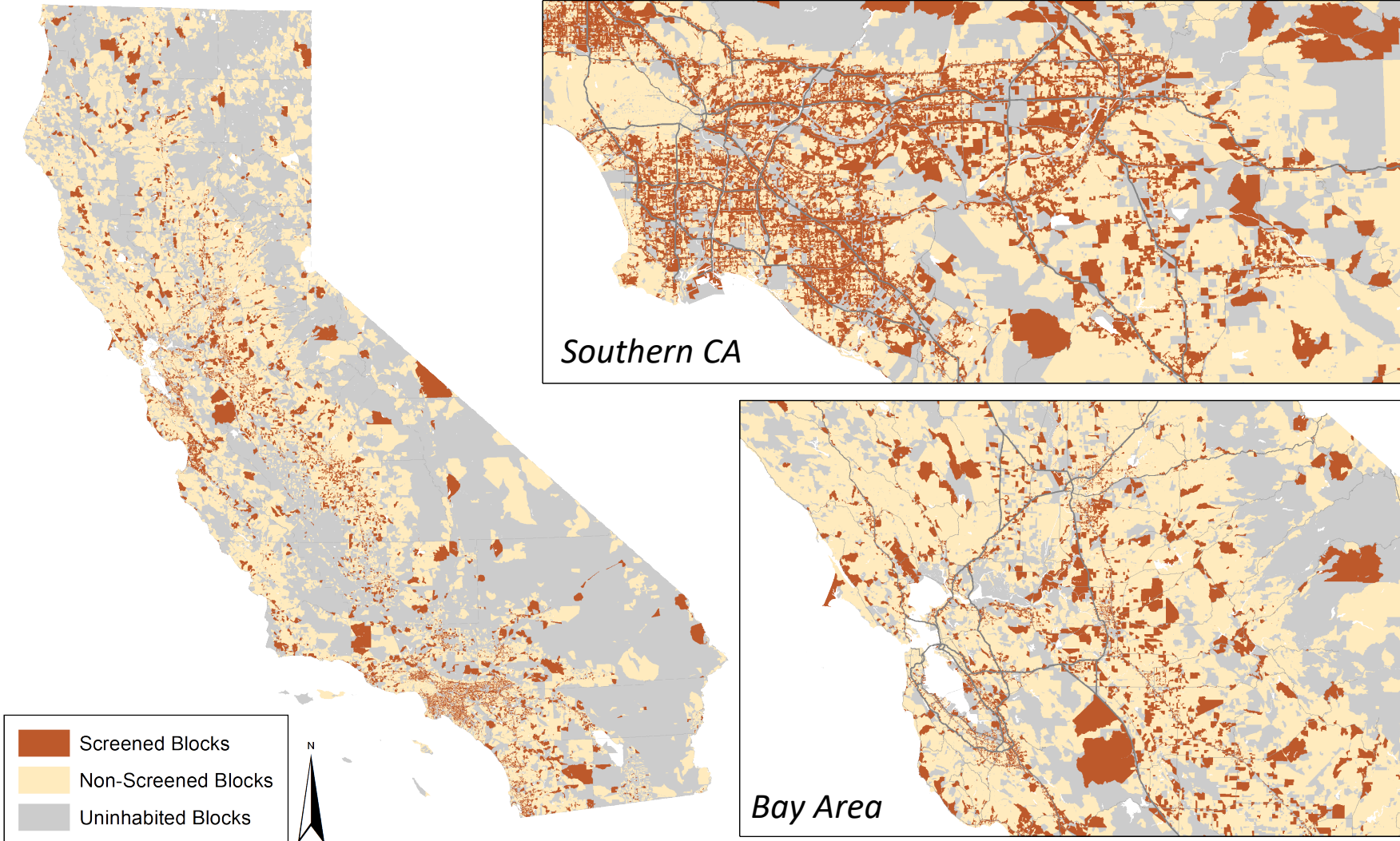
Access to Destinations Screen

Total Population Coverage: **67%**



Priority Populations Screen

Total Population Coverage: **27%**





WHAT'S NEXT FOR US?

Continue development of the accessibility layer.

Review staff and public feedback and questions.

Public Discussions on EQI

QUESTION TIME

Chat is Open

EQI Survey

English <https://forms.office.com/g/BpmuNtfQnp>

Participation Survey

English <https://forms.office.com/g/HprZDig1UH>

Spanish <https://forms.office.com/g/XA3MR4ciZM>



PLEASE CONTACT US

Caltrans EQI EMAIL:
CaltransEQI@dot.ca.gov

Website:
<https://dot.ca.gov/programs/planning-modal/race-equity/eqi>