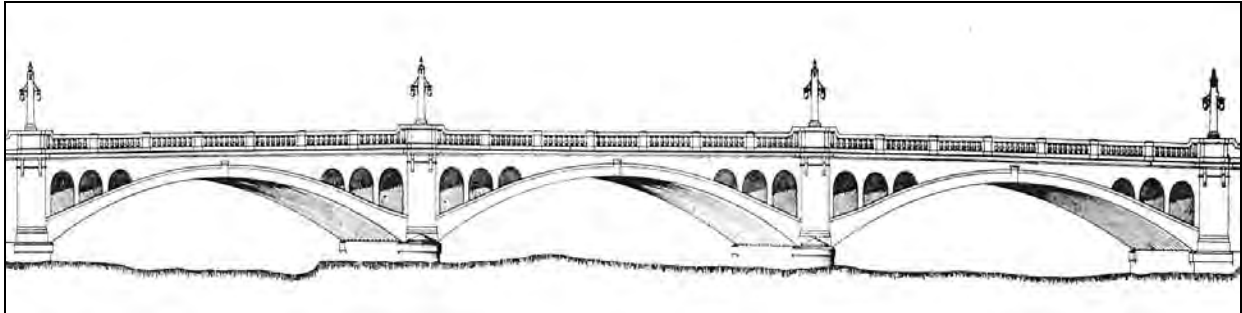


City of Los Angeles Monumental Bridges 1900-1950

Historic Context and Evaluation Guidelines

This excerpt contains Appendix C: Photographs of Bridges that Do Not Appear Eligible as City of Los Angeles Monumental Bridges. Blank pages with only a page number have been deleted.



Prepared for:

State of California
Department of Transportation
Environmental Program
1120 N Street
Sacramento, California 95814

Contract: 43A0089
Task Order: 01
Amendment: 01
EA: 43-984433

Prepared by:

JRP Historical Consulting
1490 Drew Avenue, Suite 110
Davis, California 95616

May 2004

Appendix C:

Photographs of Bridges that Do Not Appear Eligible as City of Los Angeles Monumental Bridges

Bridge 53 0098: Highway 101 over Lankershim Blvd., built 1948.....	1
Bridge 53 0130: State Street over Highway 10, built 1934	3
Bridge 53 0382: College Street over Highway 110, built 1939.....	5
Bridge 53 0405: Highway 101 over Los Angeles River, built 1944	7
Bridge 53C0075: Sunset Blvd. over Myra Avenue, built 1929	9
Bridge 53C0134: Sunset Blvd. over Glendale Blvd., built 1934.....	11
Bridge 53C0153: Temple Street over Figueroa Street, built 1940	13
Bridge 53C0160: Riverside Drive over Los Angeles River, built 1928	15
Bridge 53C0183: Sierra Hwy at Sierra Hwy Tunnel Station, built 1911(altered 1934)...	17
Bridge 53C0310: Lankershim Blvd. over Los Angeles River, built 1940.....	19
Bridge 53C0867: Soto Street over Los Angeles River, built 1928.....	21
Bridge 53C0868: 26 th Street over Los Angeles River, built 1930	23
Bridge 53C1239: Los Feliz Blvd. over Los Angeles River, built 1925.....	25
Bridge 53C1336: Temple Street over Silver Lake Blvd., built 1934.....	27
Bridge 53C1686: Westridge Road Over Arroyo Canyon, built 1928.....	29
Bridge 53C2033: Foothill Blvd over Big Tujunga Wash, built 1921 (altered 1937)	31

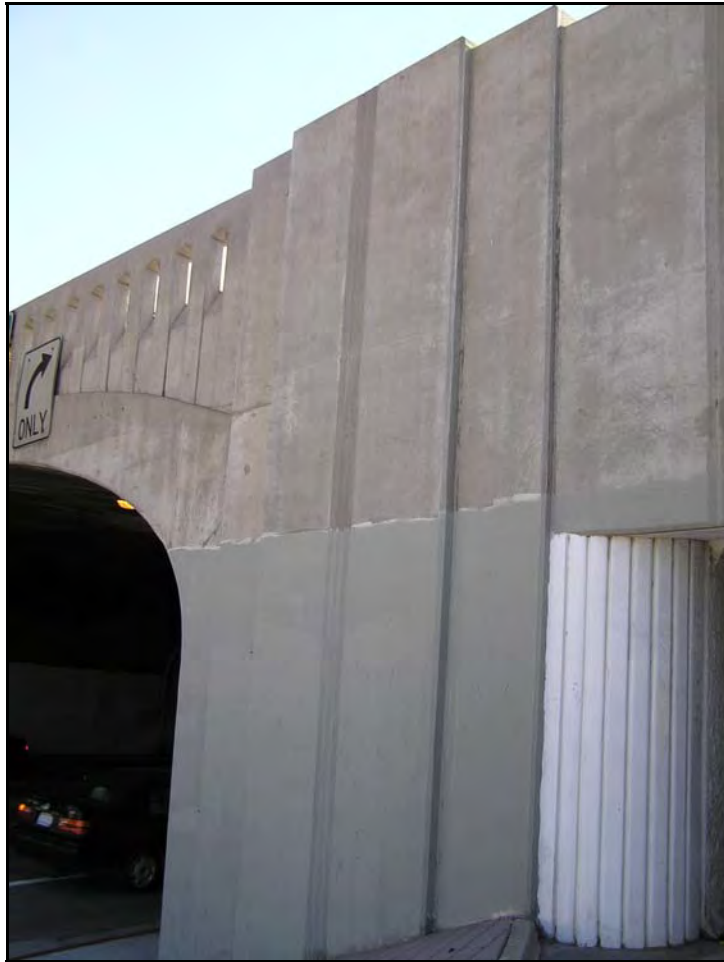
Bridge 53 0098: Highway 101 over Lankershim Blvd., built 1948
Current NR Status: 5 (ineligible)



Photograph 1: Southwest side, facing northwest, March 2004



Photograph 2: East railing on deck, facing north, March 2004



Photograph 3: Eastside, facing southwest, March 2004

Bridge 53 0130: State Street over Highway 10, built 1934
Current NR Status: 5 (ineligible)



Photograph 1: West side, facing southeast, March 2004



Photograph 2: West side, facing southeast, March 2004



Photograph 3: Deck, facing north, March 2004



Photograph 4: West side railing, facing northwest, March 2004

Bridge 53 0382: College Street over Highway 110, built 1939

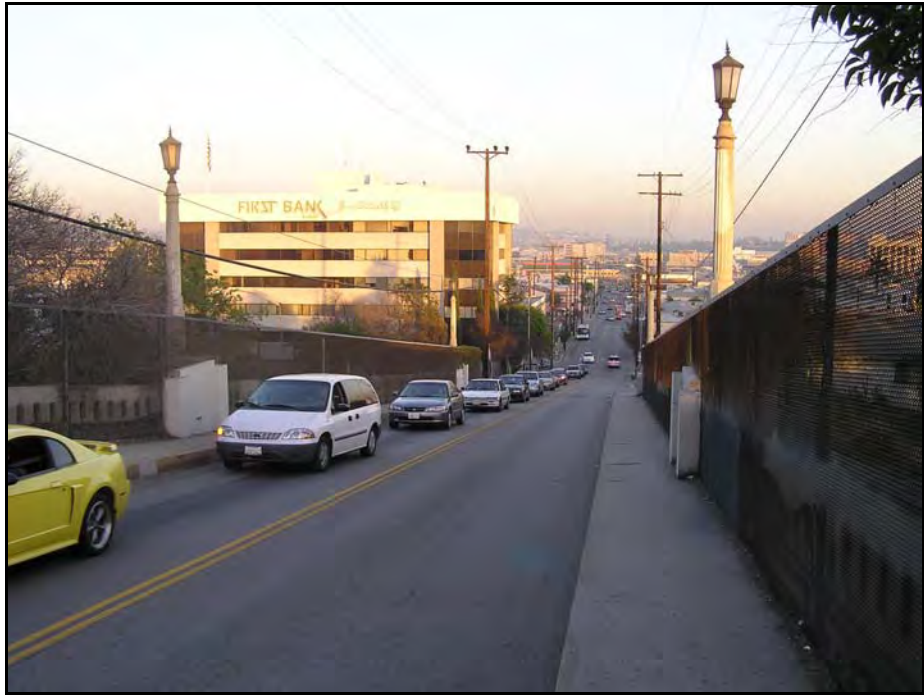
Current NR Status: 5 (ineligible). Proposed for promotion to 2 (eligible) in the survey of concrete box-girder bridges, part of Statewide Historic Bridge Inventory Update of 2003-2004.



Photograph 1: Southwest side, facing north, March 2004



Photograph 2: Southwest corner, facing northwest, March 2004



Photograph 3: Deck, facing southwest, March 2004



Photograph 4: South side, facing northwest, March 2004

Bridge 53 0405: Highway 101 over Los Angeles River, built 1944
Current NR Status: 5 (ineligible)



Photograph 1: South side, facing north, February 2004



Photograph 2: North side, facing southeast, February 2004



Photograph 3: Deck, facing east, March 2003

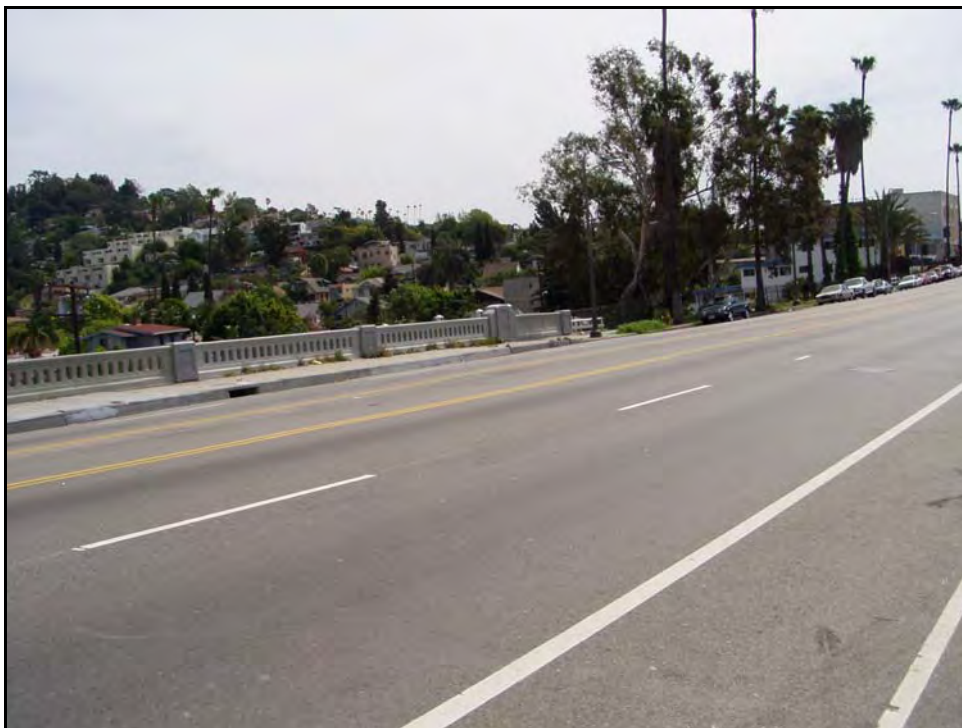


Photograph 4: Facing north on Mission Road, March 2003

Bridge 53C0075: Sunset Blvd. over Myra Avenue, built 1929
Current NR Status: 5 (ineligible)



Photograph 1: Facing southwest, March 2003



Photograph 2: Facing southwest, March 2003

Bridge 53C0134: Sunset Blvd. over Glendale Blvd., built 1934
Current NR Status: 5 (ineligible)



Photograph 1: Facing north, March 2003

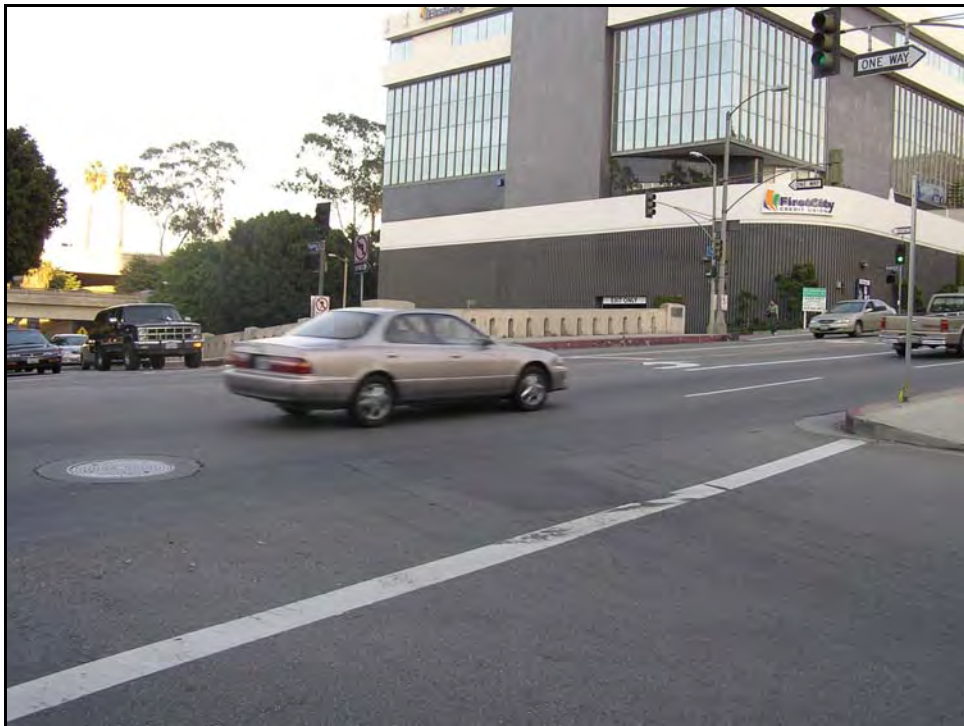


Photograph 2: Facing west, March 2003

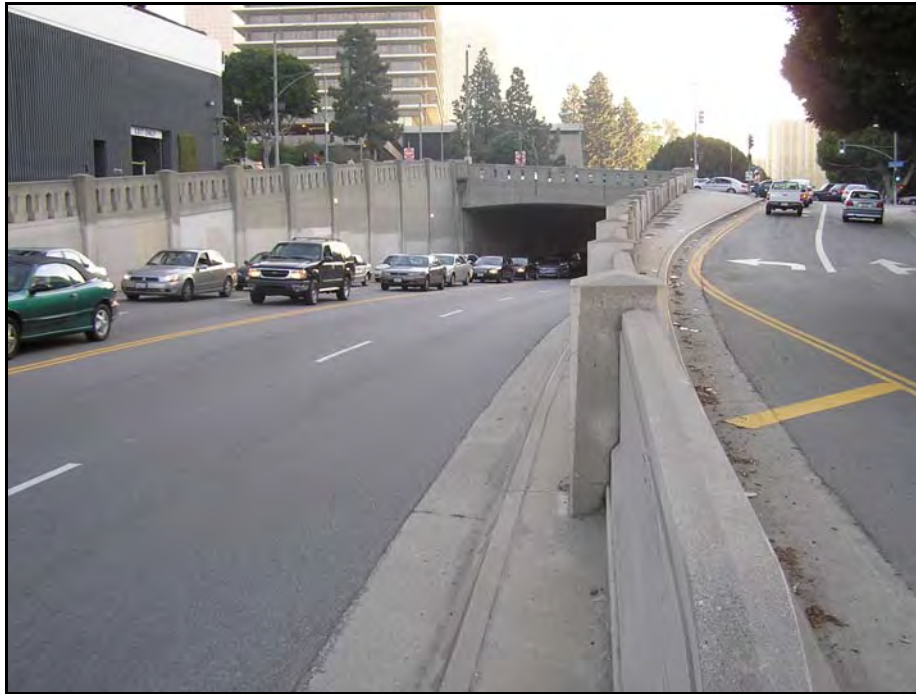
Bridge 53C0153: Temple Street over Figueroa Street, built 1940
Current NR Status: 5 (ineligible)



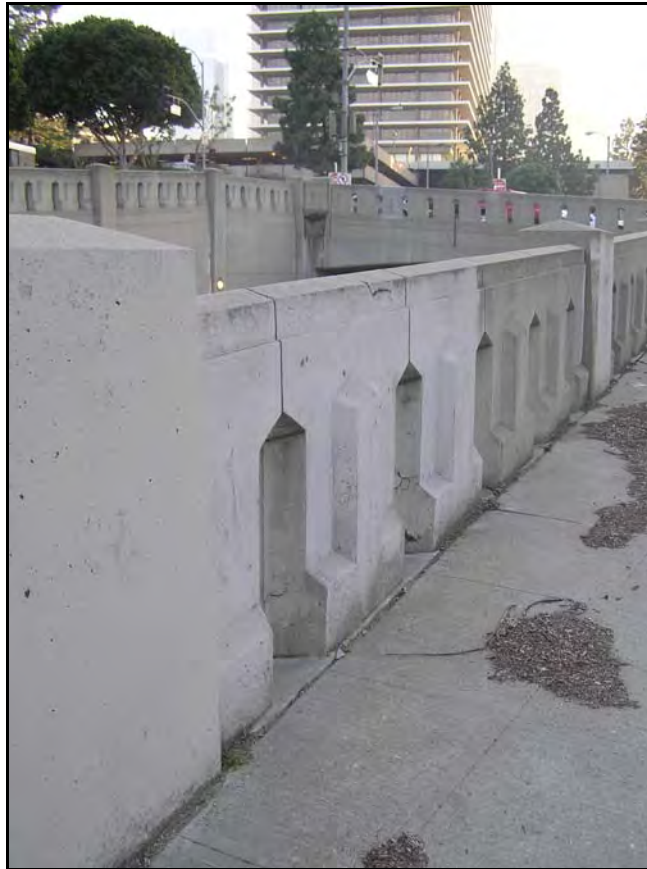
Photograph 1: South side, facing northwest, March 2004



Photograph 2: Deck, facing south, March 2004



Photograph 3: North side, facing southeast, March 2004

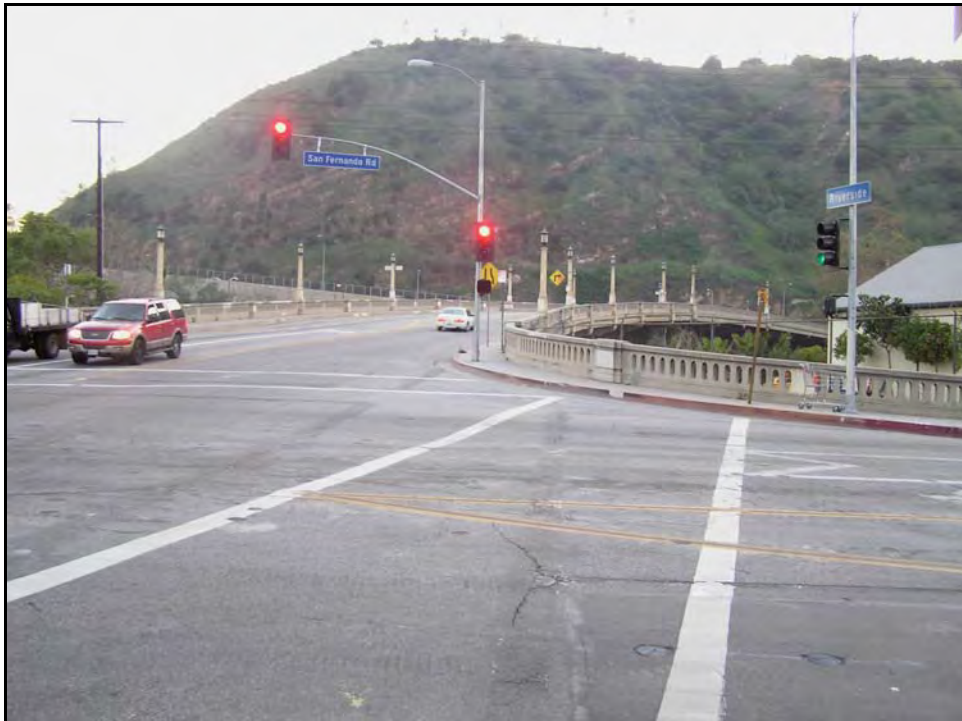


Photograph 4: Northwest railing, facing southeast, March 2004

Bridge 53C0160: Riverside Drive over Los Angeles River, built 1928
Current NR Status: 5 (ineligible)



Photograph 1: Facing southwest, March 2003



Photograph 2: Facing west, March 2004

**Bridge 53C0183: Sierra Highway over Sierra Highway Tunnel Station,
built 1911 (altered 1934)
Current NR Status: 5 (ineligible)**



Photograph 1: North side, facing southeast, March 2004



Photograph 2: Deck, facing west, March 2004



Photograph 3: Facing southeast, March 2004



Photograph 4: South side, facing northeast, March 2004

Bridge 53C0310: Lankershim Blvd. over Los Angeles River, built 1940
Current NR Status: 5 (ineligible)



Photograph 1: Wets side, facing northeast, March 2004



Photograph 2: facing northeast, March 2004



Photograph 3: East Side, facing southwest, March 2004



Photograph 4: Facing west, March 2004

Bridge 53C0867: Soto Street over Los Angeles River, built 1928
Current NR Status: 5 (ineligible)



Photograph 1: Facing northwest, April 2003



Photograph 2: Facing south, April 2003

Bridge 53C0868: 26th Street over Los Angeles River, built 1930
Current NR Status: 5 (ineligible)



Photograph 1: Facing north, April 2003



Photograph 2: Facing east, April 2003



Photograph 3: Facing northeast, April 2003

Bridge 53C1239: Los Feliz Blvd. over Los Angeles River, built 1925
Current NR Status: 5 (ineligible)



Photograph 1: South side, facing northwest, March 2004



Photograph 2: Facing southwest, March 2004

Bridge 53C1336: Temple Street over Silver Lake Blvd., built 1934
Current NR Status: 5 (ineligible)



Photograph 1: Northeast side, facing west, March 2004



Photograph 2: Southwest side, facing north, March 2004



Photograph 3: Deck, Facing northeast, March 2004



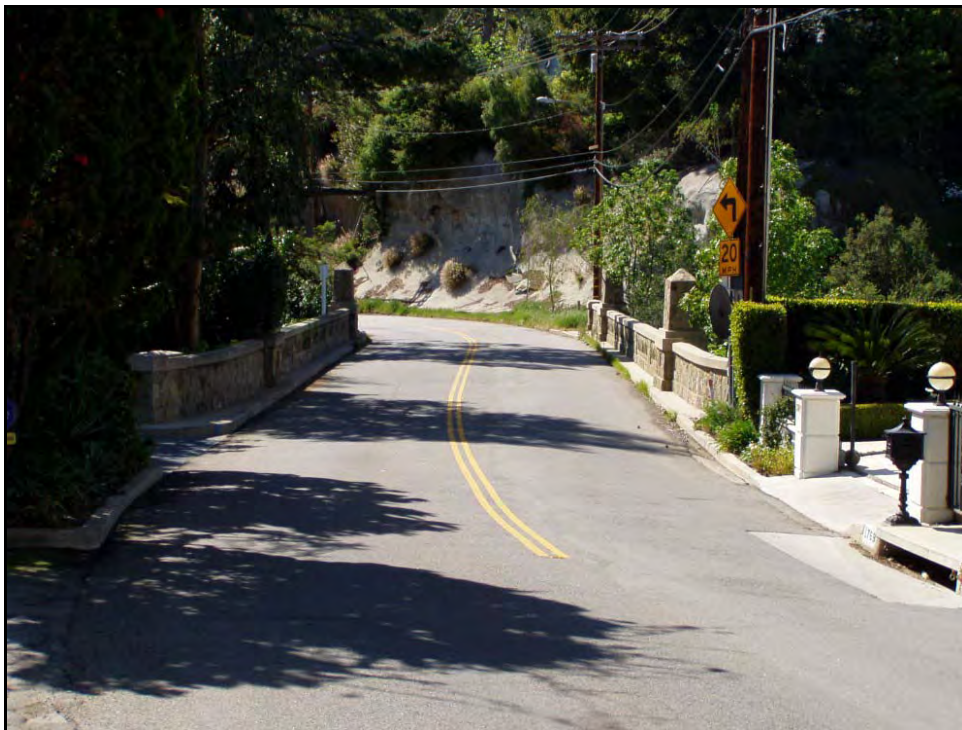
Photograph 4: Facing northeast, March 2004

Bridge 53C1686: Westridge Road Over Arroyo Canyon, built 1928

Current NR Status: 5 (ineligible). Proposed for promotion to 2 (eligible) in the survey of concrete arch bridges, part of Statewide Historic Bridge Inventory Update of 2003-2004.



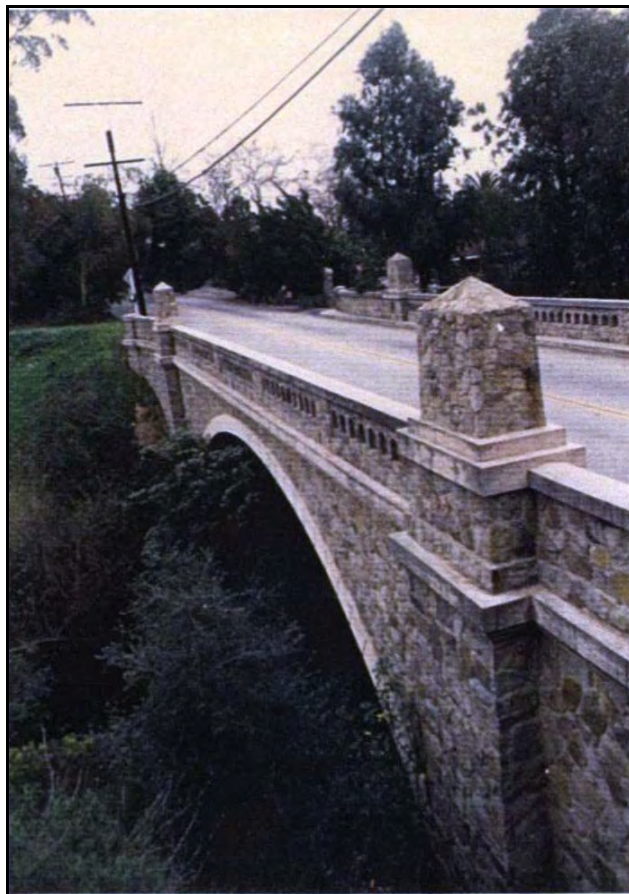
Photograph 1: Facing northeast, March 2003



Photograph 2: Facing east, March 2003



Photograph 3: Facing southeast, March 2003



Photograph 4: Facing southeast, 1986

Bridge 53C2033: Foothill Blvd over Big Tujunga Wash, built 1921 (altered 1937)
Current NR Status: 5 (ineligible)



Photograph 1: Westside, facing southeast, March 2004



Photograph 2: Deck, facing west, March 2004



Photograph 3: Facing east, March 2004



Photograph 4: East side, facing south, March 2004