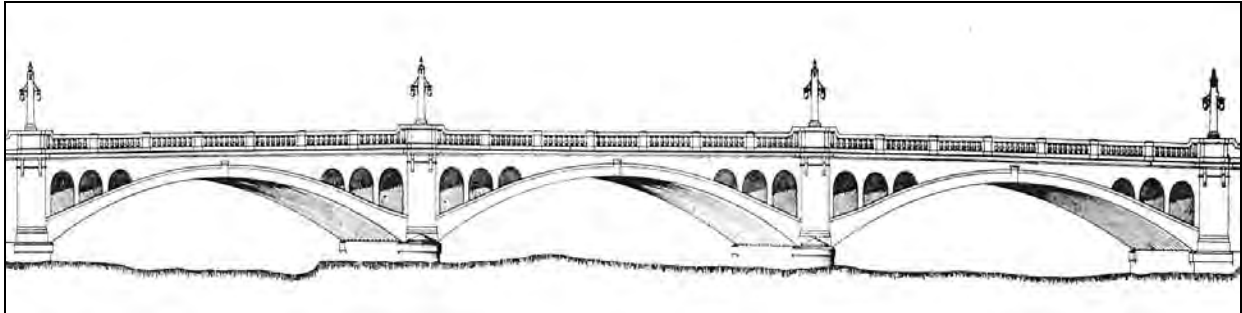


City of Los Angeles Monumental Bridges 1900-1950

Historic Context and Evaluation Guidelines

This excerpt contains Appendix B: Maps and Photographs of Bridges that Appear Eligible as City of Los Angeles Monumental Bridges. Blank pages with only a page number have been deleted.



Prepared for:

State of California
Department of Transportation
Environmental Program
1120 N Street
Sacramento, California 95814

Contract: 43A0089
Task Order: 01
Amendment: 01
EA: 43-984433

Prepared by:

JRP Historical Consulting
1490 Drew Avenue, Suite 110
Davis, California 95616

May 2004

Appendix B:

Maps and Photographs of Bridges that Appear Eligible as City of Los Angeles Monumental Bridges

Figures 1a and 1b: Maps of Bridges that Appear Eligible as City of Los Angeles
Monumental Bridges

Bridge 53 0042R: Highway 110 over Los Angeles River, built 1936.....	1
Bridge 53 0301: Mulholland Drive over Highway 101, built 1940.....	5
Bridge 53 0392: Cesar E. Chavez Avenue over Highway 10, built 1906	7
Bridge 53 0397Y: Gaffey Street at Highway 110, built 1935	9
Bridge 53 0595: Sixth Street Viaduct, built 1932.....	13
Bridge 53 1069: Glendale Hyperion Viaduct, built 1928.....	17
Bridge 53C1179: Glendale Hyperion Viaduct-Waverly Drive, built 1927	19
Bridge 53C1881: Glendale Hyperion Viaduct-Hyperion Avenue, built 1929	21
Bridge 53C1882: Glendale Hyperion Viaduct- Hyperion Avenue, built 1929	23
Bridge 53C1883: Glendale Hyperion Viaduct- Glendale Boulevard, built 1929.....	25
Bridge 53C1884: Glendale Hyperion Viaduct- Glendale Boulevard, built 1929.....	27
Bridge 53C0044: Fourth Street Viaduct, built 1931	29
Bridge 53C0045: Beverly Blvd.-Glendale Blvd. Separator, built 1942	31
Bridge 53C0096: Fletcher Drive over Los Angeles River, built 1927	35
Bridge 53C0130: Cesar E. Chavez Avenue over Los Angeles River, built 1926	37
Bridge 53C0136: Sunset Blvd. over Silver Lake Blvd., built 1934.....	39
Bridge 53C0161: Franklin Avenue Over Myra Avenue, built 1925	43
Bridge 53C0163: Olympic Blvd. over Los Angeles River, built 1925.....	45
Bridge 53C0331: Fourth Street over Lorena Street and Bernal Avenue, built 1928.....	47
Bridge 53C0399 Elberon Avenue over North Gaffey Street, built 1934.....	49
Bridge 53C0545: North Broadway over Los Angeles River, built 1909.....	51
Bridge 53C0859: North Spring Street over Los Angeles River, built 1928	53
Bridge 53C1010: North Main Street Over Los Angeles River, built 1910	55
Bridge 53C1166: First Street over Los Angeles River, built 1929.....	57
Bridge 53C1298: Riverside Drive over Los Angeles River, built 1938.....	61
Bridge 53C1321: Seventh Street over Los Angeles River, built 1907 (altered 1927).....	63
Bridge 53C1375: Washington Blvd. over Los Angeles River, built 1931	65
Bridge 53C1380: West Blvd. over Venice Blvd., built 1933	67

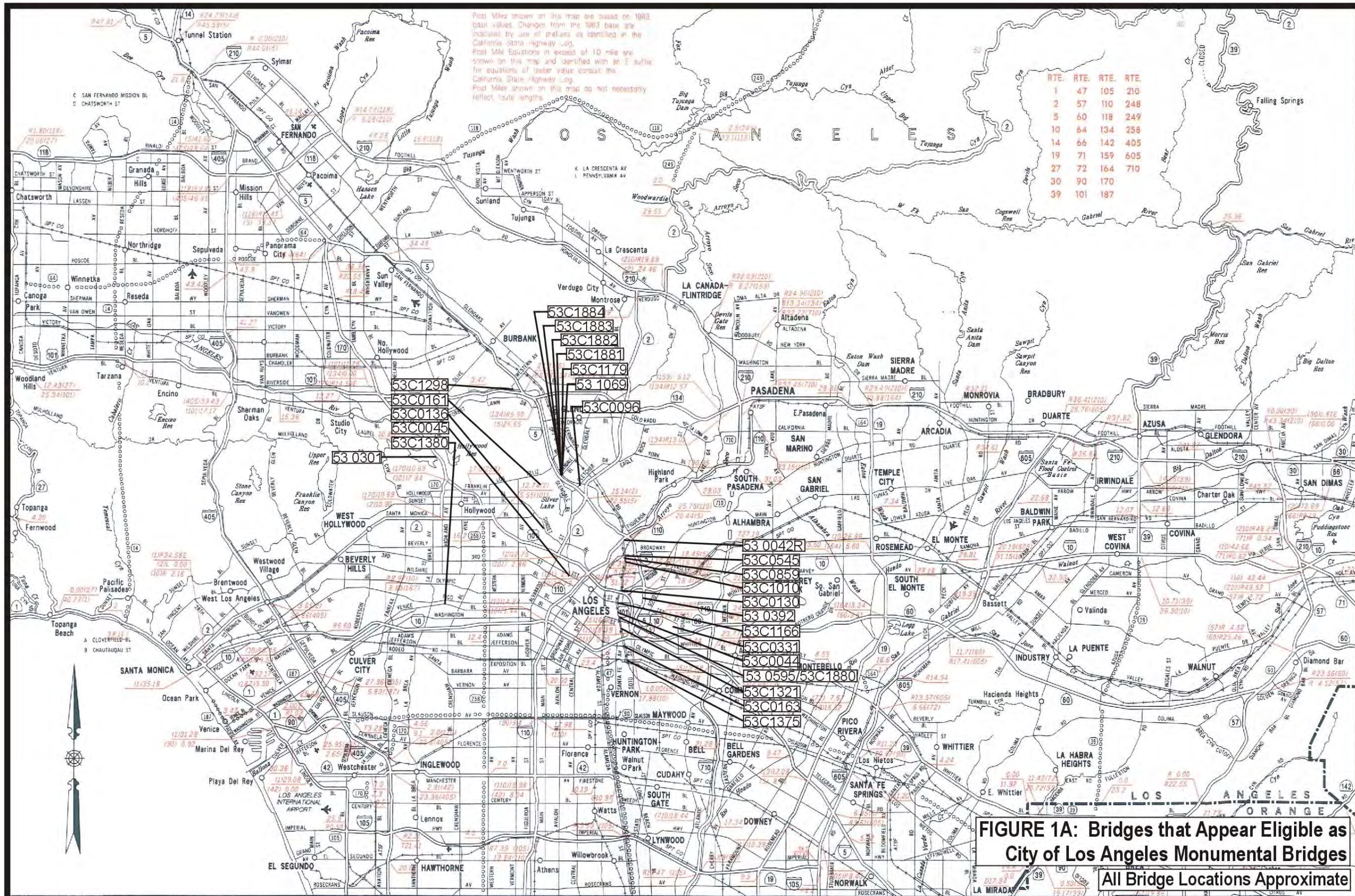


FIGURE 1A: Bridges that Appear Eligible as City of Los Angeles Monumental Bridges
All Bridge Locations Approximate

-LEGEND-

HIGHWAYS
 Traversable State Highways
 Unconstructed State Highways (Route Adopted)
 Unconstructed State Highways (Route Not Adopted)

RAILROADS
 AMTRAK
 Other Lines
 Rapid Transit

AIRPORTS
 Commercial
 Military
 Private

Interstate Highway Numbers (80)
U.S. Highway Numbers (89)
State Sign Route Numbers (48)
Legislative Route Numbers (39)

NOTE: The Legislative Route Number is the same as the Interstate, U.S. or State Sign Route number unless otherwise indicated. When only the Legislative numbers are shown, Route Sign shields are not installed.

POST MILES

1 0 1 2 3 4 MILES
 1 0 1 2 3 4 5 6 KILOMETERS

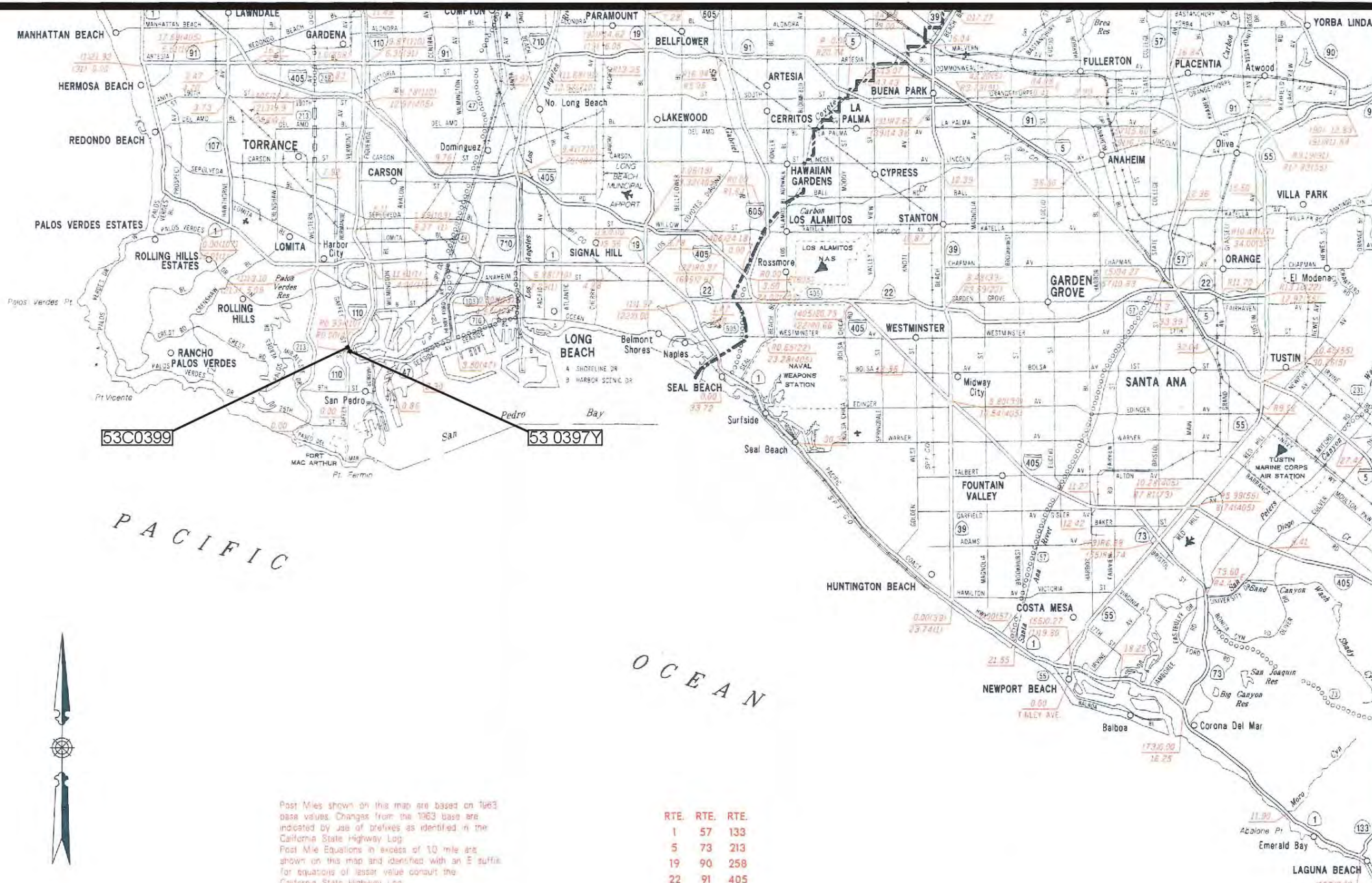
STATE OF CALIFORNIA
 DEPARTMENT OF TRANSPORTATION
LOS ANGELES AND VICINITY

D-7B

D-7B

Users noting errors or revisions on this map, please correct and forward to:
 Headquarters, Office Engineer, P.O. Box 942874 Sacramento 94274-0001

POST MILE DATA REVISED AS OF 7-94 JUNE 1994



PACIFIC

OCEAN

Post Miles shown on this map are based on 1963 base values. Changes from the 1963 base are indicated by use of prefixes as identified in the California State Highway Log. Post Mile Equations in excess of 1.0 mile are shown on this map and identified with an E suffix. For equations of lesser value consult the California State Highway Log. Post Miles shown on this map do not necessarily reflect route lengths.

RTE.	RTE.	RTE.
1	57	133
5	73	213
19	90	258
22	91	405
39	103	605
47	107	710
55	110	

FIGURE 1B: Bridges that Appear Eligible as City of Los Angeles Monumental Bridges
All Bridge Locations Approximate

LEGEND

HIGHWAYS

- Traversable State Highways
- Unconstructed State Highways (Route Adopted)
- Unconstructed State Highways (Route Not Adopted)

RAILROADS

- AMTRAK
- Other Lines
- Rapid Transit

AIRPORTS

- Commercial
- Military
- Private

POST MILES

1 0 1 2 3 4 MILES

1 0 1 2 3 4 5 6 KILOMETERS

STATE OF CALIFORNIA
 DEPARTMENT OF TRANSPORTATION
LOS ANGELES AND VICINITY

D-7C

Users noting errors or revisions on this map, please correct and forward to: Headquarters, Office Engineer, P.O. Box 942674 Sacramento 94274-0001

Bridge 53 0042R: Highway 110 over Los Angeles River, built 1936
Current NR Status: 2 (eligible)



Photograph 1: West end, facing northwest, March 2004



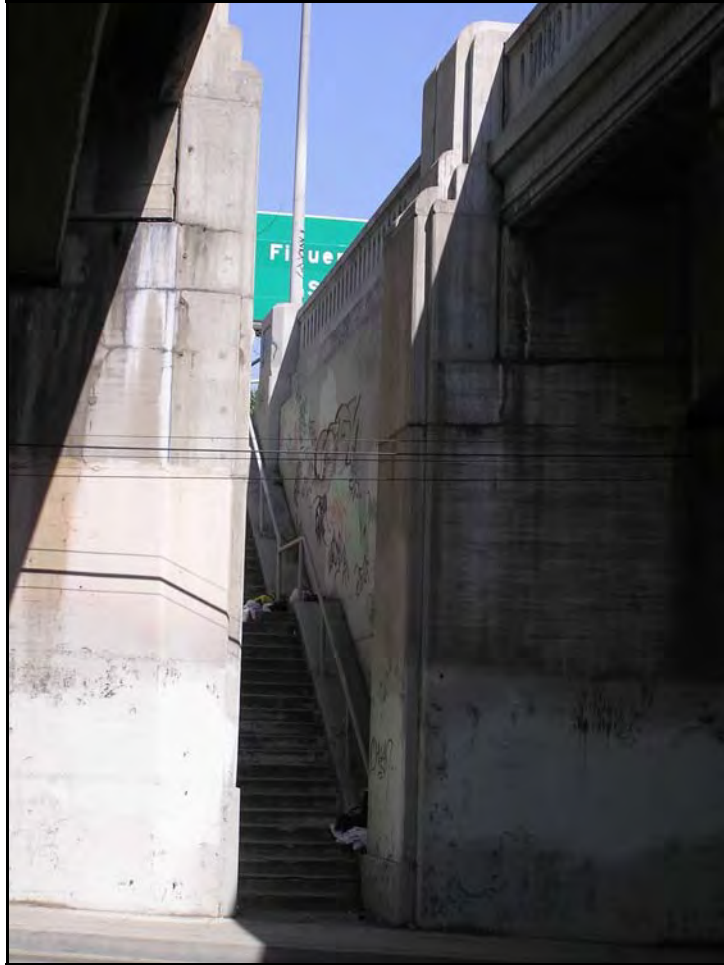
Photograph 2: 53 042L in foreground 53 042R in background, facing south, March 2004



Photograph 3: North railing, facing west, March 2004



Photograph 4: Deck, facing west, March 2004



Photograph 5: Stairs to deck sidewalk, facing east,
March 2004

Bridge 53 0301: Mulholland Drive over Highway 101, built 1940
Current NR Status: 2 (eligible)



Photograph 1: South side, facing north, March 2004



Photograph 2: South side, facing northeast, March 2004



Photograph 3: Deck, facing east, March 2004



Photograph 4: Light detail, facing northeast, March 2004

Bridge 53 0392: Cesar E. Chavez Avenue over Highway 10, built 1906
Current NR Status: 5 (ineligible). Proposed for promotion to 2 (eligible)
in the survey of concrete arch bridges, part of Statewide Historic Bridge
Inventory Update of 2003-2004.



Photograph 1: Facing southeast, April 2003



Photograph 2: Deck, facing east, April 2003



Photograph 3: Facing east, April 2003

Bridge 53 0397Y: Gaffey Street at Highway 110, built 1935
Current NR Status: 5 (ineligible)



Photograph 1: East side, facing north, March 2004



Photograph 2: Deck facing north, March 2004



Photograph 3: Southeast corner, facing west, March 2004



Photograph 4: Bench at northwest corner, facing south, March 2004



Photograph 5: West side lamppost, facing east,
March 2004

Bridge 53 0595: Sixth Street Viaduct, built 1932

(Bridge 53 0595 is the state-owned portion over Highway 101. Bridge 53C1880 is the city-owned portion over the Los Angeles River and railroads.)

Current NR Status: 2 (eligible)



Photograph 1: Facing southeast, March 2004



Photograph 2: Facing southwest, April 2003



Photograph 3: Deck, facing west, April 2003



Photograph 4: Facing north, April 2003



Photograph 5: Deck, facing west, April 2003

Bridge 53 1069: Glendale Hyperion Viaduct, built 1928

(Bridge 53 1069 is the state owned portion, carrying Hyperion Avenue over Highway 5.

The viaduct includes five other city-owned bridges: 53C1179, Waverley Drive over Hyperion Avenue; 53C1881, Hyperion Avenue over the Los Angeles River; 53C1882, Hyperion Avenue over Riverside Drive; 53C1883, Glendale Boulevard over the Los Angeles River; and 53C1884, Glendale Boulevard over the Los Angeles river).

Current NR Status: 2 (eligible)



Photograph 1: Facing northwest, March 2003



Photograph 2: Facing northwest, March 2003

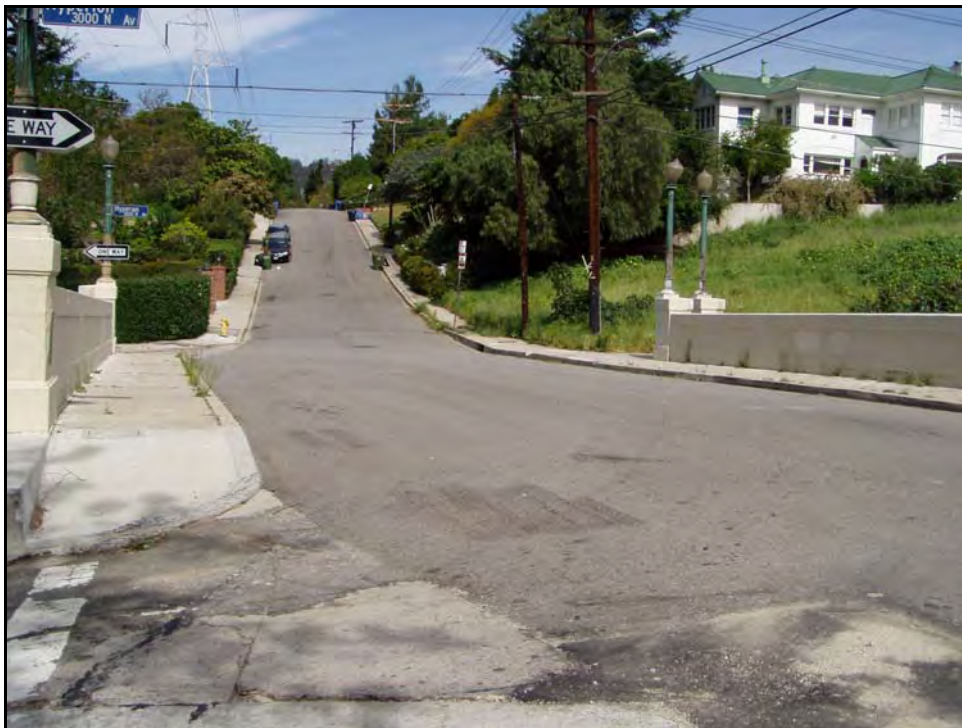


Photograph 3: Facing northwest, 1986

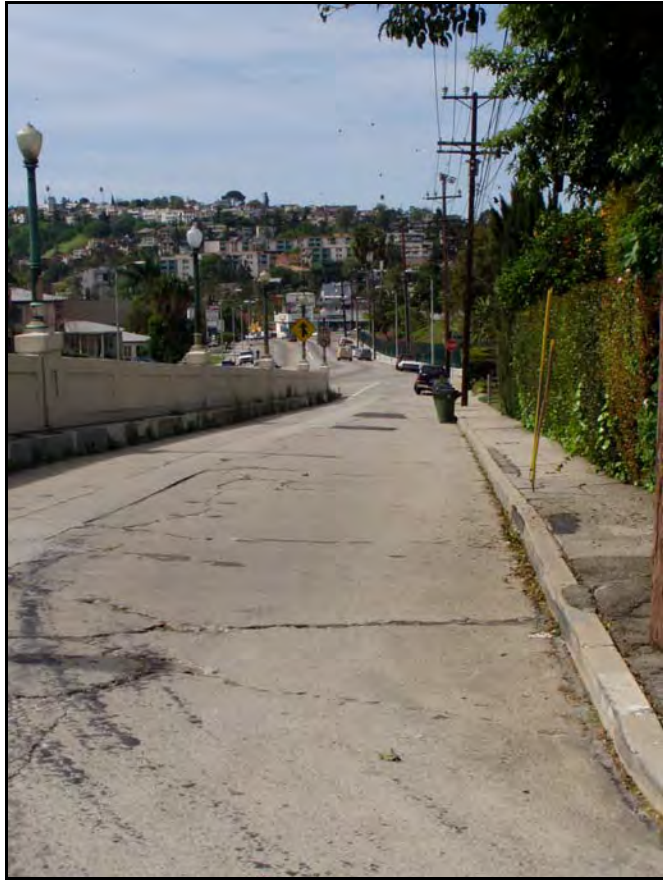
Bridge 53C1179: Glendale Hyperion Viaduct-Waverly Drive over Hyperion Avenue, built 1927
Current NR Status: 2 (eligible)



Photograph 1: Facing east, March 2003



Photograph 2: Deck, facing north, March 2003



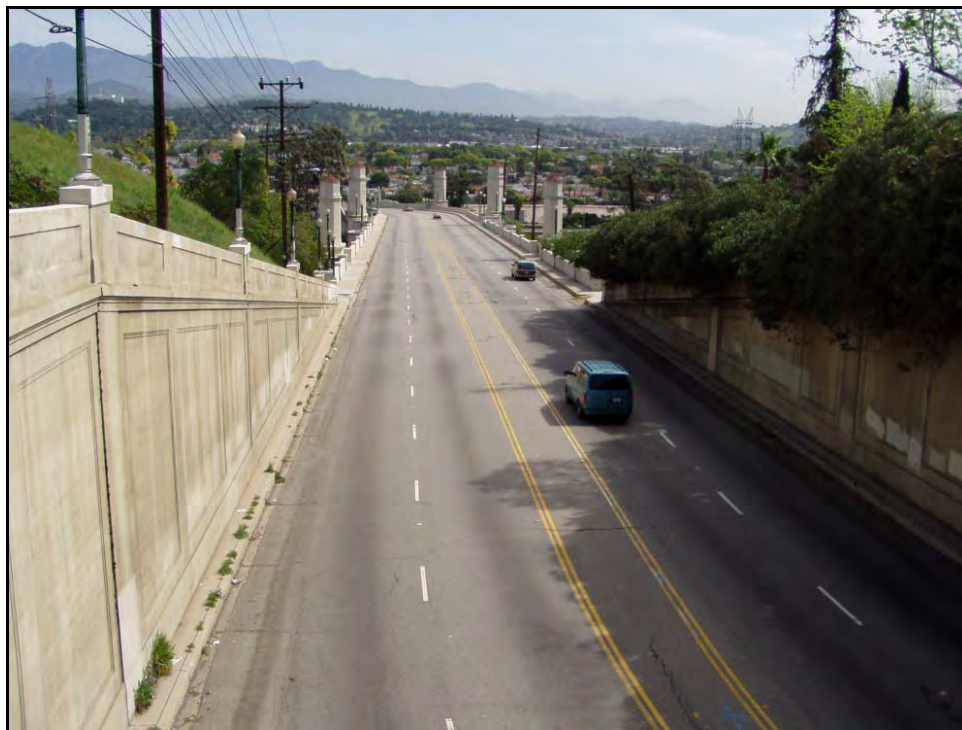
Photograph 3: Facing west, March 2003

**Bridge 53C1881: Glendale Hyperion Viaduct-Hyperion Avenue
over Los Angeles River, built 1929**

Current NR Status: 5 (ineligible). Proposed for promotion to 2 (eligible) in the survey of concrete arch bridges, part of Statewide Historic Bridge Inventory Update of 2003-2004.



Photograph 1: Facing north, November 1987



Photograph 2: Facing east, March 2003

**Bridge 53C1882: Glendale Hyperion Viaduct- Hyperion Avenue
over Riverside Drive, built 1929**

Current NR Status: 5 (ineligible). Proposed for promotion to 2 (eligible) in the survey of concrete arch bridges, part of Statewide Historic Bridge Inventory Update of 2003-2004.



Photograph 1: Facing north, March 2003



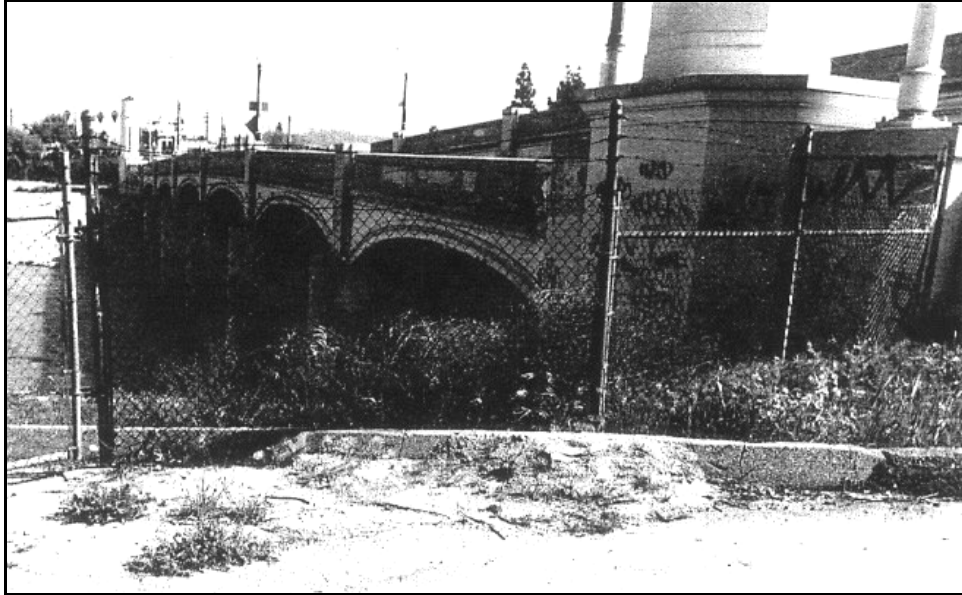
Photograph 2: Facing northeast, March 2003



Photograph 3: Facing east, March 2003

**Bridge 53C1883: Glendale Hyperion Viaduct- Glendale Boulevard
over Los Angeles River, built 1929**

Current NR Status: 5 (ineligible). Proposed for promotion to 2 (eligible) in the survey of concrete arch bridges, part of Statewide Historic Bridge Inventory Update of 2003-2004.



Photograph 1: Facing southeast, March 1995



Photograph 2: Facing northwest, March 2003

Bridge 53C1884: Glendale Hyperion Viaduct- Glendale Boulevard over Los Angeles River, built 1929

Current NR Status: 5 (ineligible). Proposed for promotion to 2 (eligible) in the survey of concrete arch bridges, part of Statewide Historic Bridge Inventory Update of 2003-2004.



Photograph 1: Facing northwest, March 2003

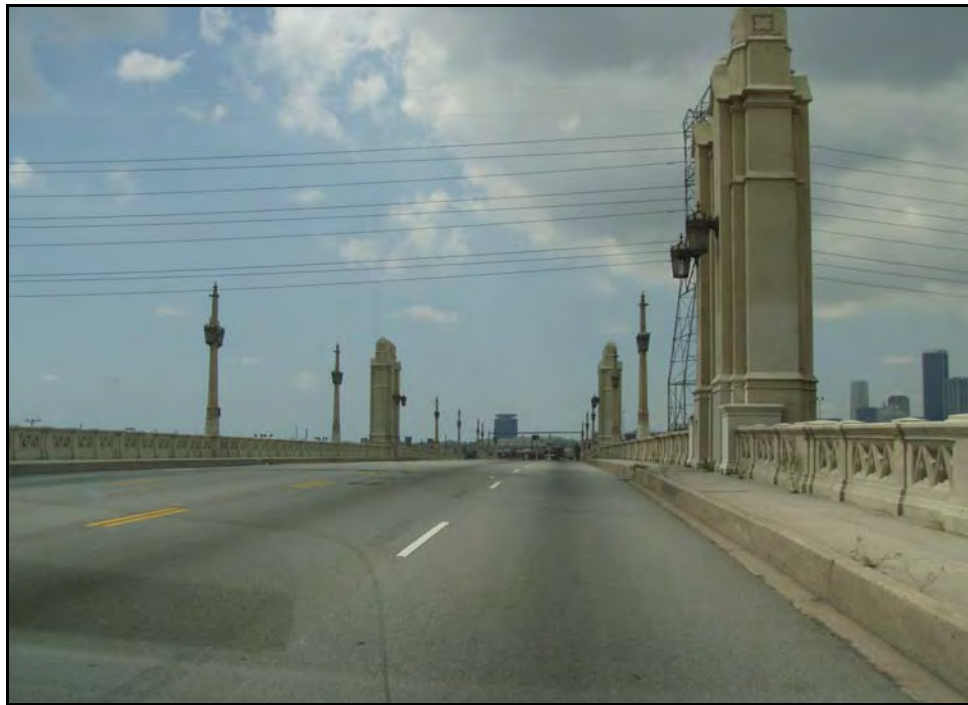


Photograph 2: Facing northwest, March 2003

Bridge 53C0044: Fourth Street Viaduct, built 1931
Current NR Status: 2 (eligible)



Photograph 1: Facing northwest, March 2004



Photograph 2: Deck, facing west, March 2003



Photograph 3: East end, facing north, April 2003



Photograph 4: Deck, facing west, March 2003

Bridge 53C0045: Beverly Blvd.-Glendale Blvd. Separator, built 1942
Current NR Status: 2 (eligible), per March 2004 evaluation by
JRP Historical Consulting for the City of Los Angeles



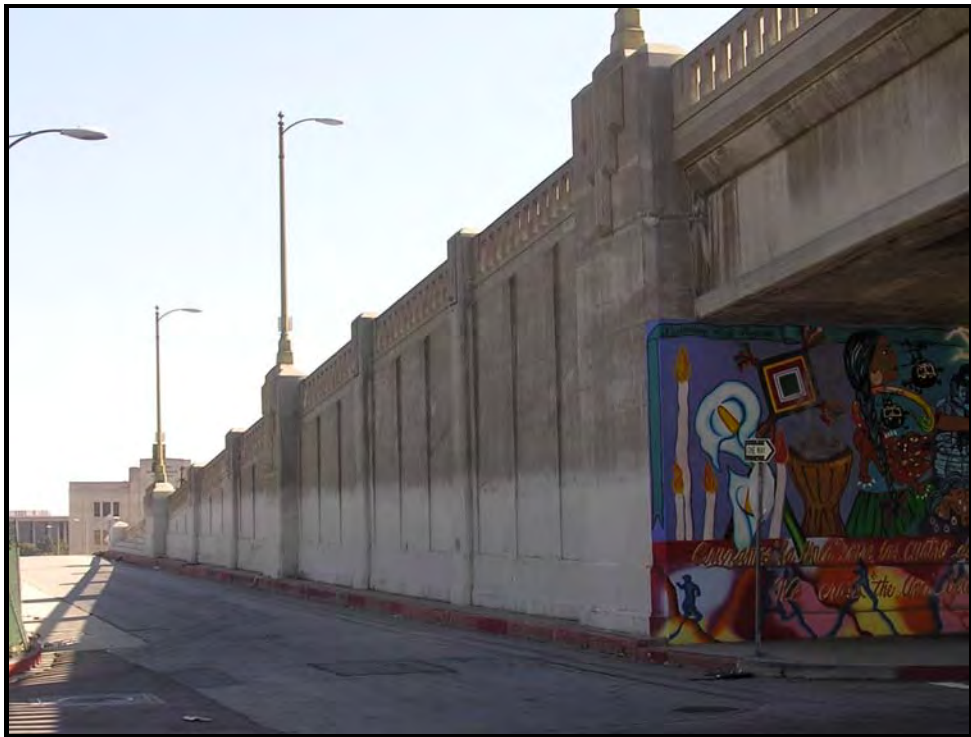
Photograph 1: South side, facing north, March 2004



Photograph 2: North side, facing southeast, February 2004



Photograph 3: Facing northwest, February 2004



Photograph 4: Facing southeast, February 2004



Photograph 5: Deck, facing southeast, February 2004

Bridge 53C0096: Fletcher Drive over Los Angeles River, built 1927
Current NR Status: 2 (eligible)



Photograph 1: Facing southwest, March 2004



Photograph 2: Deck, Facing southwest, March 2004

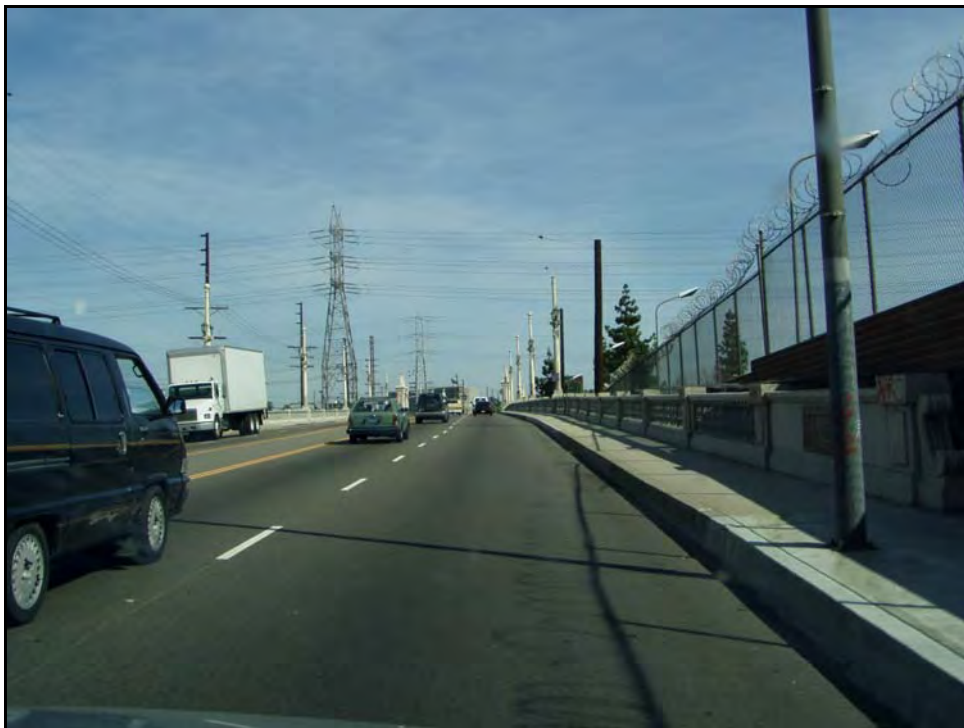


Photograph 3: Facing southwest, March 2004

Bridge 53C0130: Cesar E. Chavez Avenue over Los Angeles River, built 1926
Current NR Status: 2 (eligible)



Photograph 1: Facing northwest, March 2003



Photograph 2: Facing northwest, March 2003



Photograph 3: Facing north, March 2003

Bridge 53C0136: Sunset Blvd. over Silver Lake Blvd., built 1934
Current NR Status: 5 (ineligible)



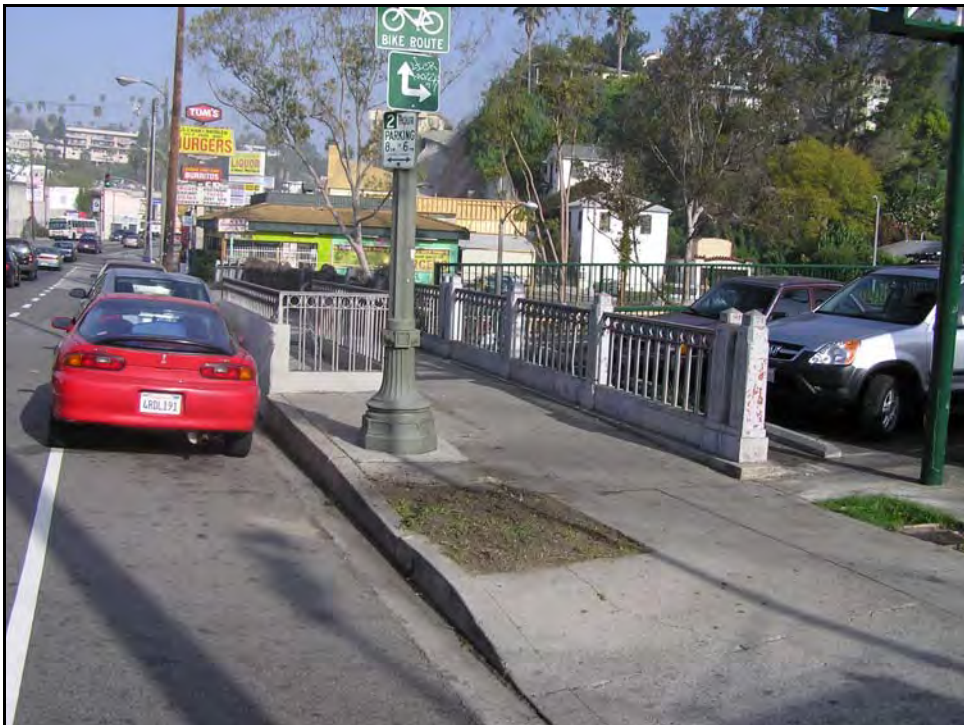
Photograph 1: South side, facing northeast, March 2004



Photograph 2: Facing northeast, March 2004



Photograph 3: Eastern walkway, facing east, March 2004



Photograph 4: Deck, north railing, facing west, March 2004

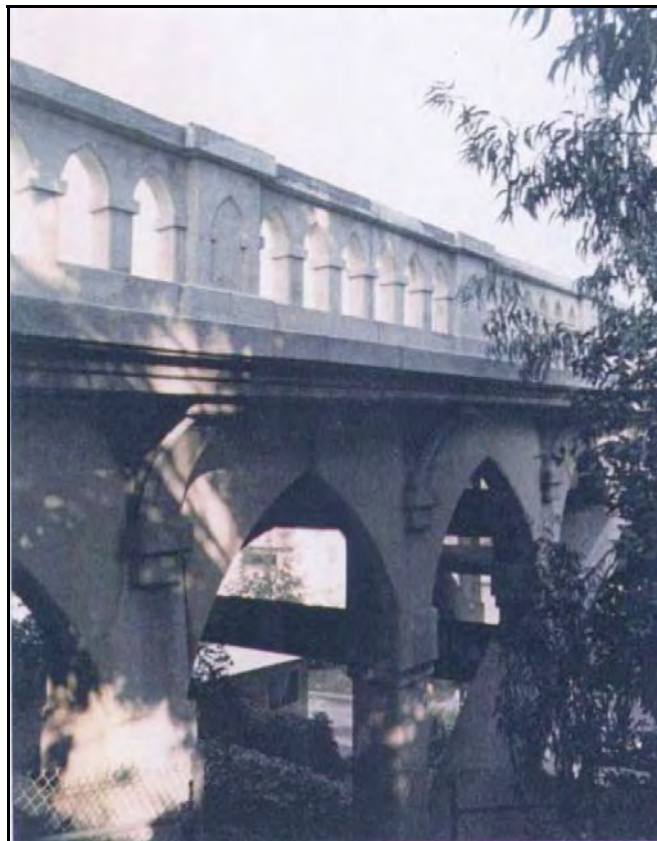


Photograph 5: western walkway, facing north,
March 2004

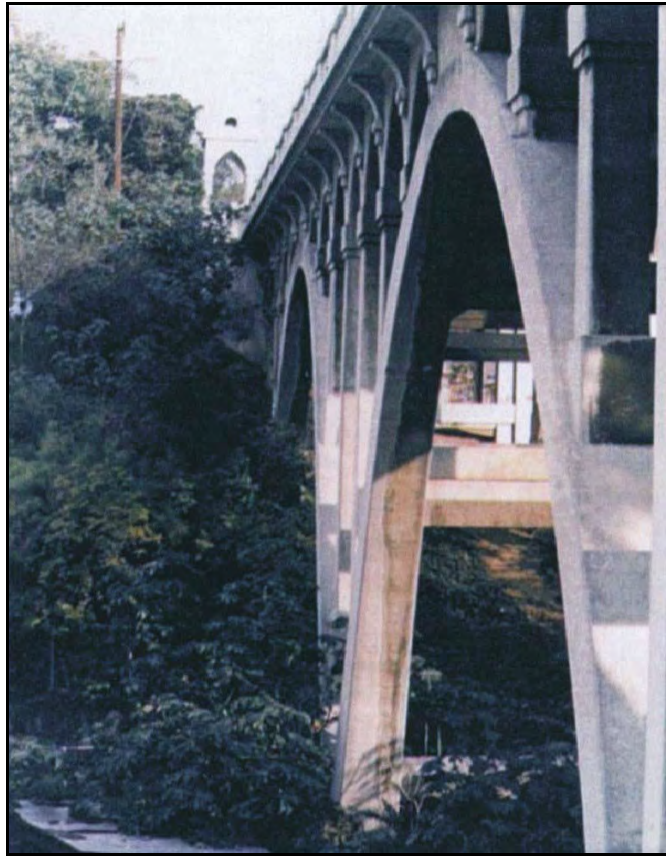
Bridge 53C0161: Franklin Avenue Over Myra Avenue, built 1925
Current NR Status: 2 (eligible)



Photograph 1: Facing east, March 2003



Photograph 2: Facing southwest 1986

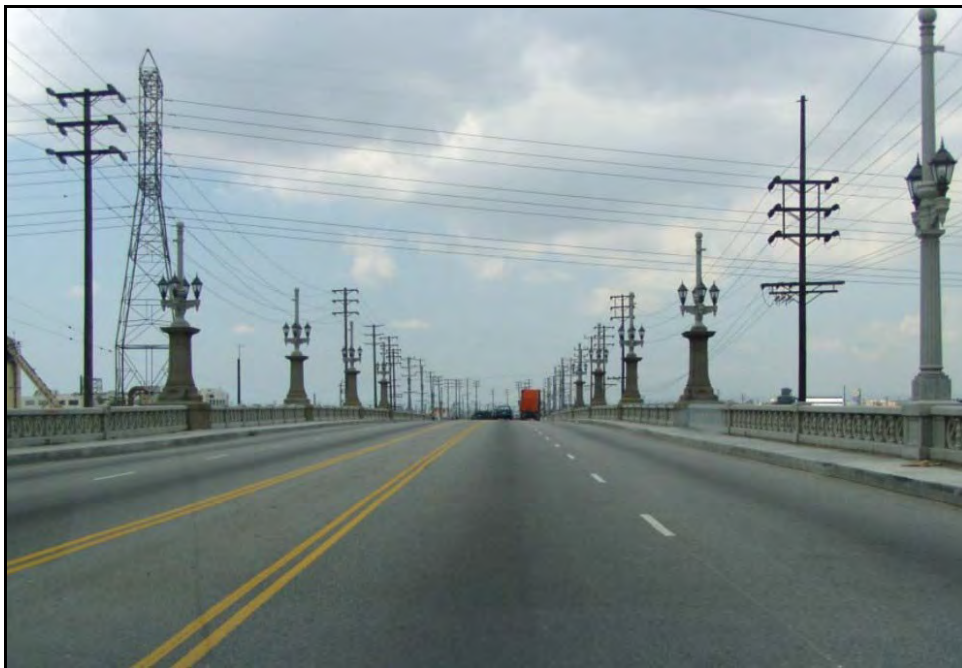


Photograph 3: Facing northwest 1986

Bridge 53C0163: Olympic Blvd. over Los Angeles River, built 1925
Current NR Status: 2 (eligible)



Photograph 1: Facing south, April 2003



Photograph 2: Facing West, April 2003

Bridge 53C0331: Fourth Street over Lorena Street and Bernal Avenue, built 1928
Current NR Status: 2 (eligible)



Photograph 1: Facing southwest, April 2003



Photograph 2: Facing southeast, April 2003



Photograph 3: Facing northeast, April 2003



Photograph 4: Facing southwest, April 2003

Bridge 53C0399 Elberon Avenue over North Gaffey Street, built 1934

Current NR Status: 5 (ineligible) . Proposed for promotion to 2 (eligible) in the survey of concrete arch bridges, part of Statewide Historic Bridge Inventory Update of 2003-2004.



Photograph 1: Facing north, March 2004



Photograph 2: Facing west, March 2003



Photograph 3: Facing west, March 2003



Photograph 4: Facing north, March 2004

Bridge 53C0545: North Broadway over Los Angeles River, built 1909
Current NR Status: 2 (eligible)



Photograph 1: East end, facing northwest, March 2004



Photograph 2: West end, facing north, March 2003



Photograph 3: Facing north, March 2003



Photograph 4: Deck, facing east, March 2003

Bridge 53C0859: North Spring Street over Los Angeles River, built 1928
Current NR Status: 2 (eligible)



Photograph 1: Facing north, March 2003



Photograph 2: Facing west, March 2003

Bridge 53C1010: North Main Street Over Los Angeles River, built 1910
Current NR Status: 2 (eligible)



Photograph 1: Facing southeast, March 2004



Photograph 2: Facing east, March 2003

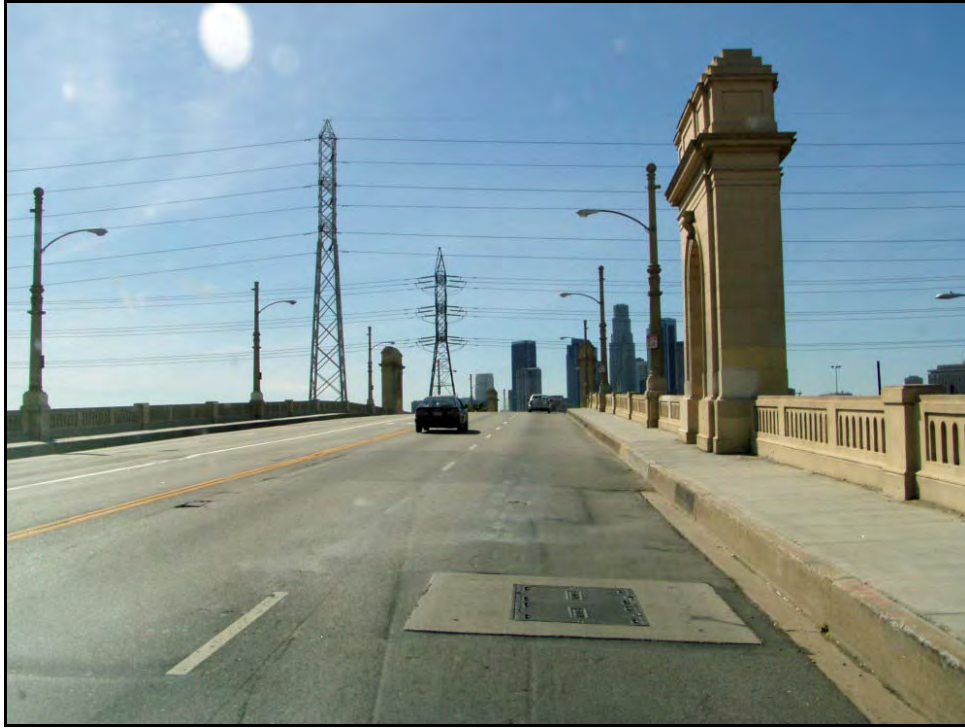
Bridge 53C1166: First Street over Los Angeles River, built 1929
Current NR Status: 2 (eligible)



Photograph 1: Facing southwest, March 2003



Photograph 2: Facing southeast, March 2003



Photograph 3: Deck, facing west, March 2003

Bridge 53C1179: Glendale Hyperion Viaduct. See Bridge 53 1069.

Bridge 53C1298: Riverside Drive over Los Angeles River, built 1938
Current NR Status 5 (ineligible)



Photograph 1: North side, facing southeast, March 2004



Photograph 2: Deck, facing west, March 2004



Photograph 3: South side, facing north, March 2004



Photograph 4: Facing northeast, March 2004

Bridge 53C1321: Seventh Street over Los Angeles River, built 1907 (altered 1927)
Current NR Status: 2 (eligible)



Photograph 1: Facing south, April 2003

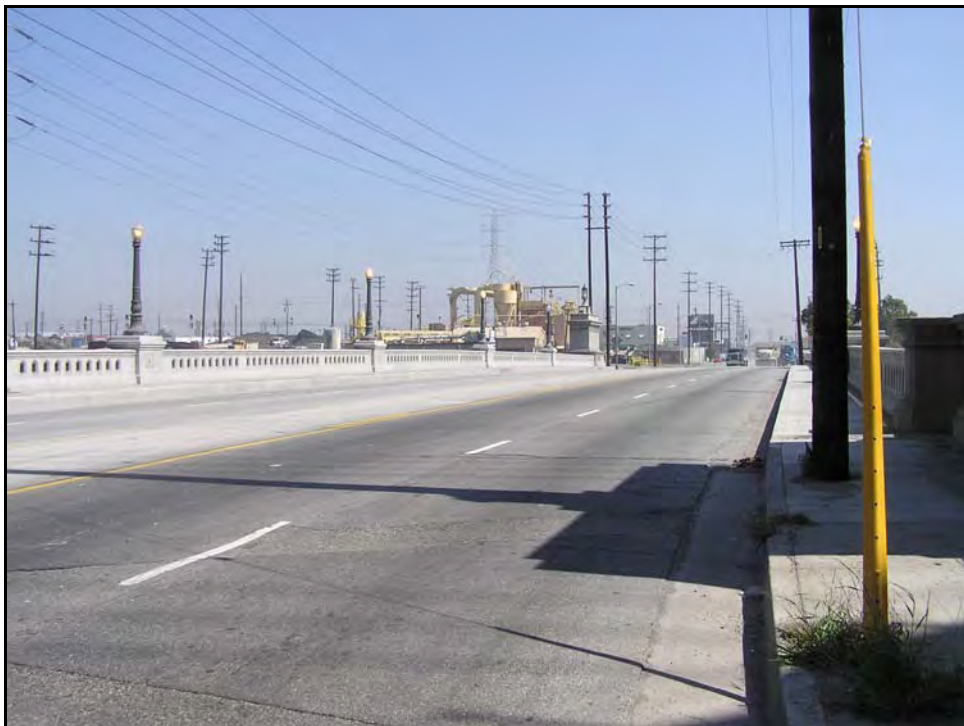


Photograph 2: Facing west, April 2003

Bridge 53C1375: Washington Blvd. over Los Angeles River, built 1931
Current NR Status: 2 (eligible)



Photograph 1: South side, facing northeast, March 2004



Photograph 2: Deck, facing east, March 2004



Photograph 3: facing north, March 2004



Photograph 4: Facing north, March 2004

Bridge 53C1380: West Blvd. over Venice Blvd., built 1933
Current NR Status: 5 (ineligible)



Photograph 1: North side, facing south, March 2004



Photograph 2: Deck, facing north, March 2004



Photograph 3: Facing southwest, March 2004



Photograph 4: Facing southwest, March 2004



Photograph 5: Center pier, facing south, March 2004



Photograph 6: Facing southwest, March 2004

Bridge 53C1880: Sixth Street Viaduct, built 1932. See Bridge 53 0595.

Bridge 53C1881:Glendale Hyperion Viaduct. See 53 1069.

Bridge 53C1882:Glendale Hyperion Viaduct. See 53 1069.

Bridge 53C1883:Glendale Hyperion Viaduct. See 53 1069.

Bridge 53C1884:Glendale Hyperion Viaduct. See 53 1069.