

2.2 APPROACH SLABS

2.2.1 GENERAL

This policy addresses the selection criteria for approach slabs on new construction, rehabilitation, and widening projects.

2.2.2 DEFINITIONS

Multi-lane Facility - More than one lane moving in the same direction. A multi-lane roadway has a basic cross-section comprised of two or more through lanes in one or both directions.

Urbanized Areas - The major population centers in the State that are typically high-density locations³. Urbanized areas are demarcated by searching and selecting the '2020 Adjusted Urban Area Map', a Federal Highway Administration (FHWA) approved Caltrans-adjusted urban areas boundaries map, via this link:

<https://gisdata-caltrans.opendata.arcgis.com/datasets/>

Fill Height - Height of bridge approach embankment and/or fill above original grade within 150 feet longitudinally of the bridge abutment^{1,3}.

SM&I Recommendation – SM&I identifies the scope of work related to approach slabs during the planning phase of the project.

2.2.3 POLICY

The flow charts in Figure 2.2.3-1 and Figure 2.2.3-2 shall be utilized to select the appropriate approach slab type.

Table 2.2.3-1 lists the approved approach slab standards.

Table 2.2.3-1 Approach Slab Standard Plans²

Standard Plan Title	Plan Number
Structure Approach - Type N (30)	B9-1
Structure Approach - Type R (30)	B9-2
Structure Approach - Type R (10)	B9-3
Structure Approach - Type EQ (10)	B9-4
Structure Approach - Slab Details	B9-5
Structure Approach - Drainage Details	B9-6

N = New Construction, R = Rehabilitation, EQ = New Seismic Slab. The numbers 10 and 30 refer to the minimum length in feet of the approach slab.

2.2.4 REFERENCES

1. Caltrans. (2014). *Geotechnical Manual, Embankments*, California Department of Transportation, Sacramento, CA.
2. Caltrans. (2024). *Standard Plans*, 2024 Edition, California Department of Transportation, Sacramento, CA.
3. Caltrans. (2025). *Highway Design Manual*, 7th Edition, California Department of Transportation, Sacramento, CA.

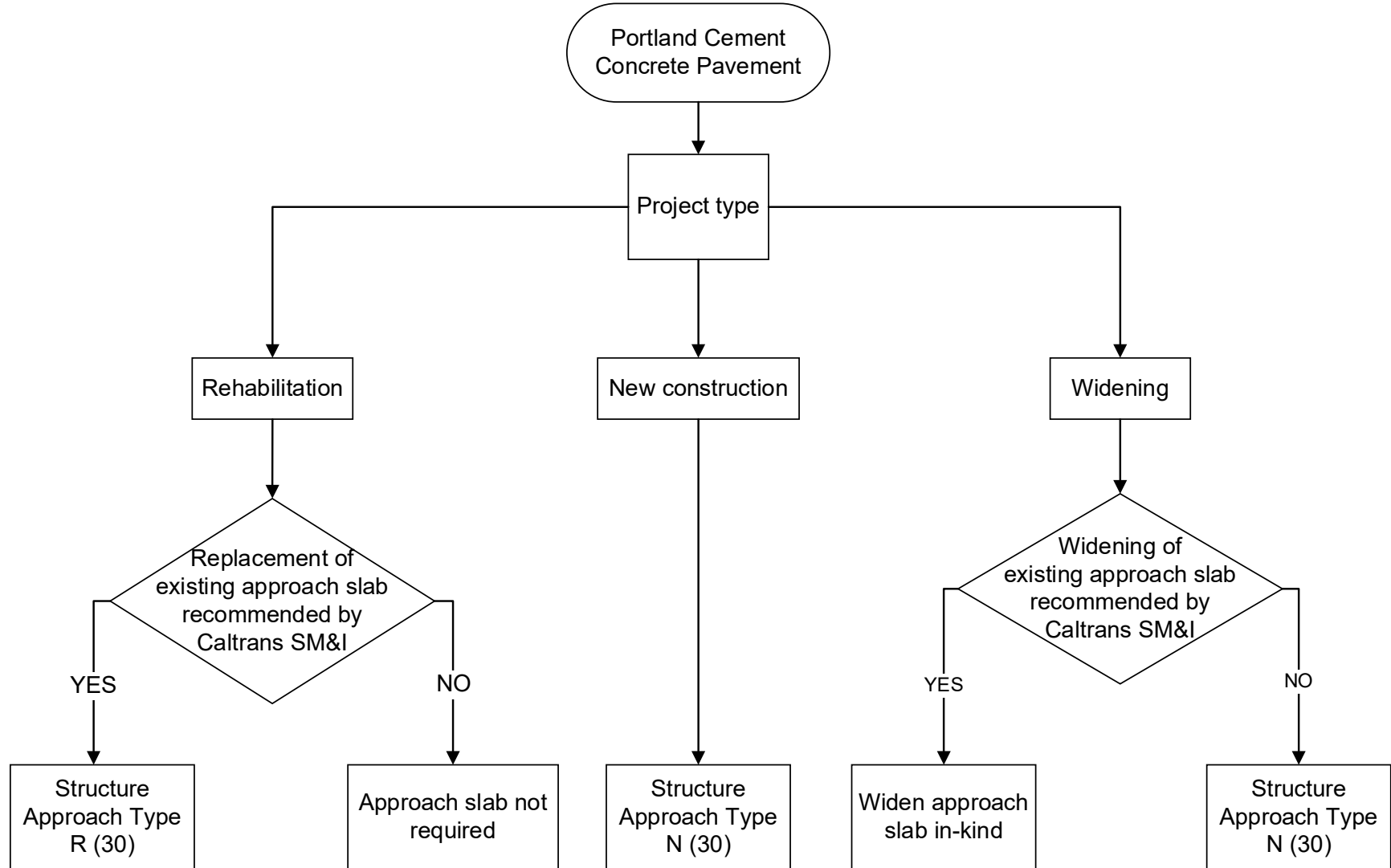


Figure 2.2.3-1 Portland Cement Concrete Pavement Flow Chart

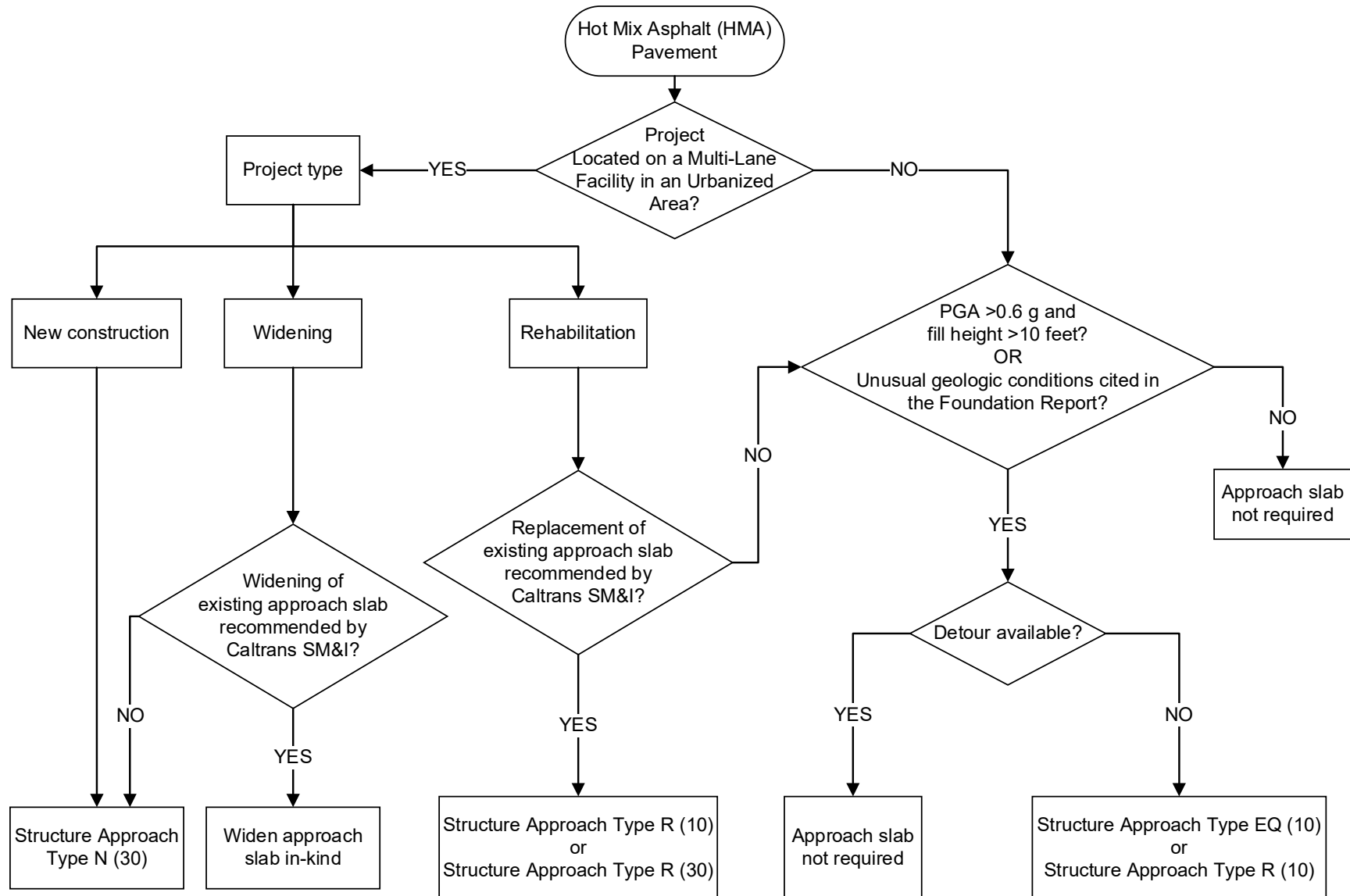


Figure 2.2.3-2 Hot Mix Asphalt Pavement Flow Chart