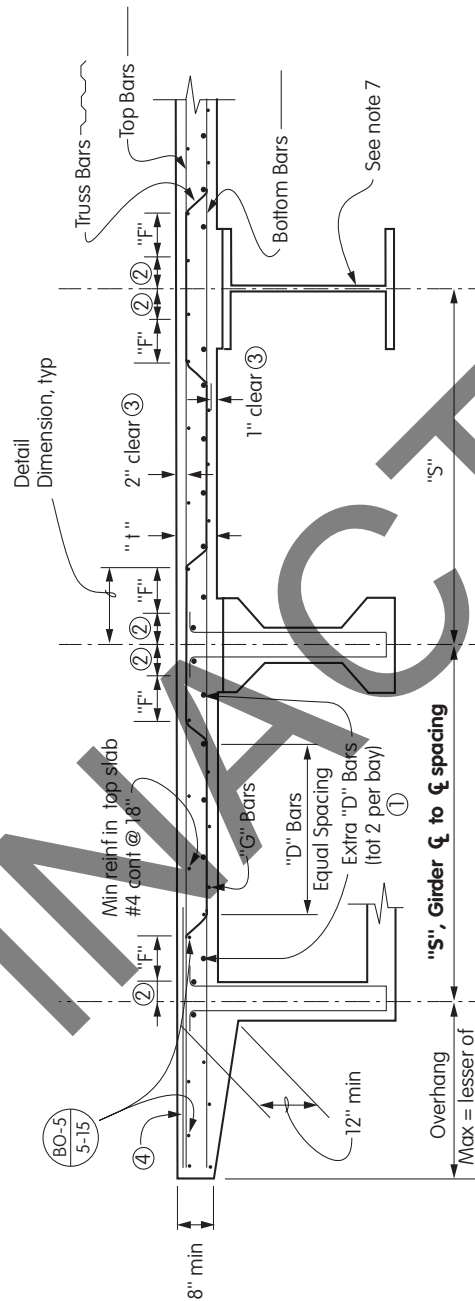


Deck Slab Reinforcement Details

AASHTO LRFD BRIDGE DESIGN SPECIFICATIONS



LEGEND

- ① Extra "D" bars are to be added when span "S" $\geq 11'-6"$
- ② Distance from ζ girder to design section for negative moment (Art. 4.6.2.1.6)
 - Concrete box girders: 1/2 the girder web width
 - Precast concrete I-shaped and T-shaped beams: 1/3 the flange width (15" max)
 - Steel girders: 1/4 the flange width
- ③ Increase cover over bars and adjust slab thickness if required for environmental conditions. See Table 5.12.3-1 and MTD 8-2.
- ④ Provide additional top transverse deck reinforcement in the overhangs when "S" $\leq 11'-6"$. See note 10.

Notes

For Notes, see page 4 of this Memo to Designers.
 For deck slab thickness and reinforcement, see Table 10-20.1.