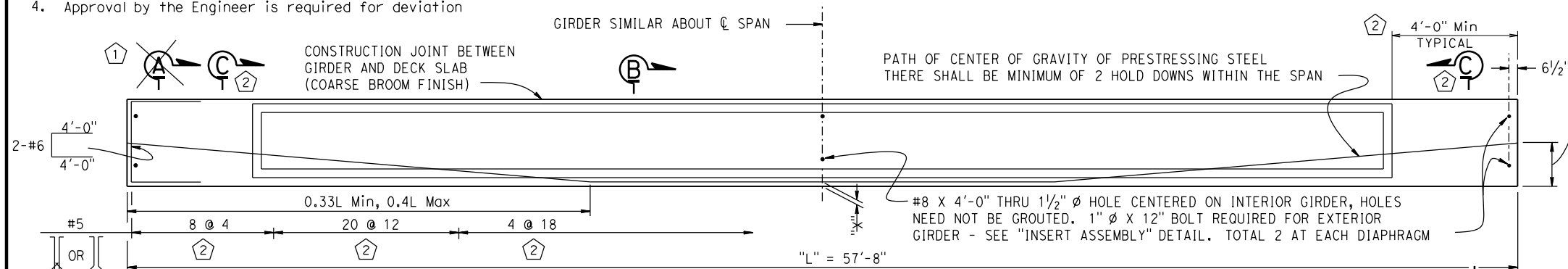


CLEARANCES FOR PRETENSIONED STRANDS

- Strands may be bundled in groups consisting of 3 vertically, 2 horizontally and separated at the ends
- The Min distance "S" between groups or individual strands is 1½" for ⅝" Ø strands, 1¾" for ½" Ø strands, 2" for 0.6" Ø strands
- "S" is measured between centers of adjacent strands
- Approval by the Engineer is required for deviation

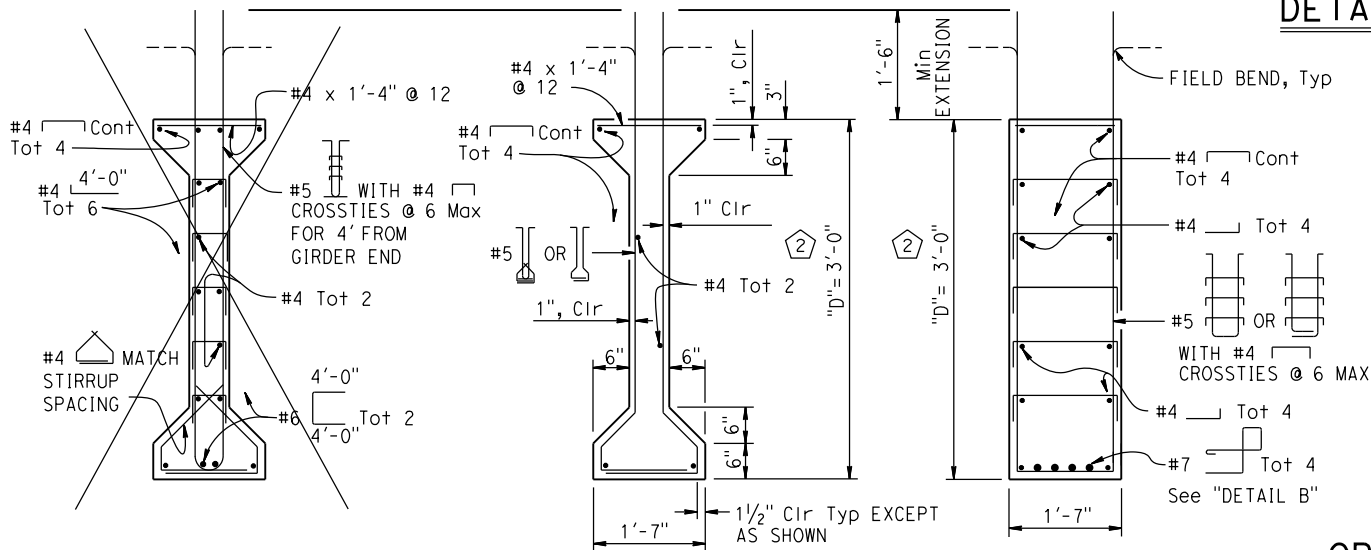


* ENGINEER TO FILL IN THESE VALUES, THEN DELETE THIS NOTE

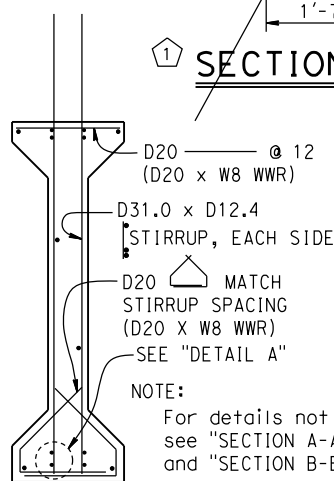
ELEVATION

LONGITUDINAL WIRE AREA MUST BE 40% OR GREATER OF VERTICAL DEFORMED WIRE'S AREA

DETAIL A

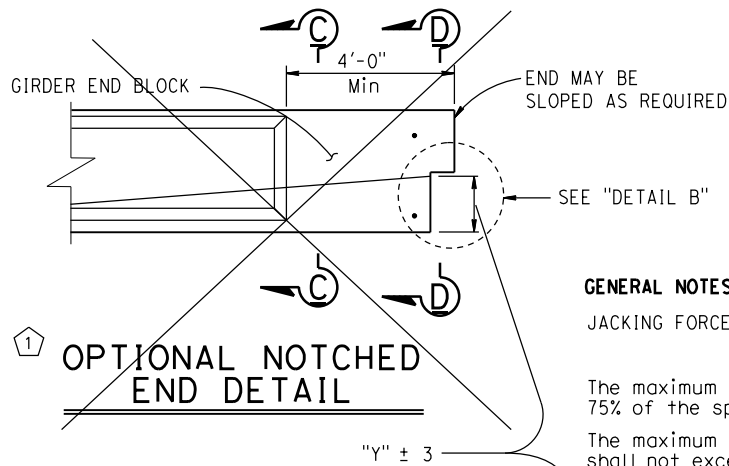


OPTIONAL WELDED WIRE REINFORCEMENT (WWR) DETAIL



WWR NOTE: MANUFACTURER'S SHOP DRAWING SHALL CONFORM TO THE REINFORCEMENT SHOWN ON THIS SHEET AS NOTED AND THE SPECIAL PROVISIONS

OPTIONAL NOTCHED END DETAIL



GENERAL NOTES:

JACKING FORCE (P):

The maximum tensile stress in the prestressing steel upon release shall not exceed 75% of the specified minimum ultimate tensile strength of the prestressing steel.

The maximum temporary tensile stress (jacking stress) in the prestressing steel shall not exceed 80% of the specified minimum ultimate tensile strength of the prestressing steel.

CONCRETE STRENGTH: f'_{ci} is at time of initial stressing f'_c is at 28 days

DEFLECTION COMPONENTS: Informational - to be used in setting screed line elevations

Screed line elevations for deck concrete will be determined by the Engineer.

Contractor may interpolate "P" and "X" values between limits shown, as approved by the Engineer.

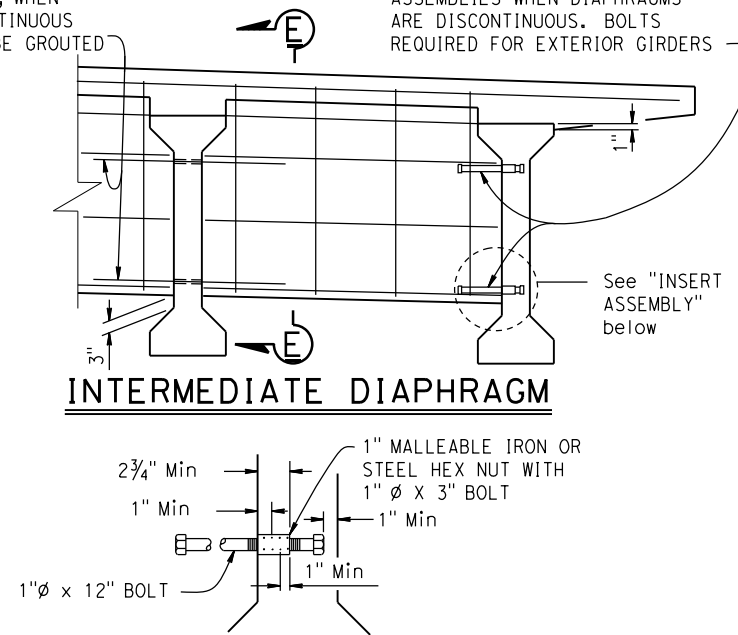
Use epoxy coated reinforcement in Environmental Area III

Girder location or designation and length	Jacking Force (P) (Kips)		"Y" (in)	Concrete Strength (ksi)		Midspan Dead Load Deflection (inches)	
	"X"			f'_{ci}	f'_c	Deck	Rail
EXTERIOR 58'-0"	4"	450	12	5	6	0.51	0.04
	6"	480					
INTERIOR 58'-0"	4"	400	12	5	6	0.51	0.04
	6"	400					

#8 x 4'-0" DOWELS PLACED THROUGH 1½" Ø HOLES FORMED IN GIRDER, WHEN DIAPHRAGM IS CONTINUOUS HOLES NEED NOT BE GROUTED

1" Ø x 12" BOLTS WITH INSERT ASSEMBLIES WHEN DIAPHRAGMS ARE DISCONTINUOUS. BOLTS REQUIRED FOR EXTERIOR GIRDERS

INTERMEDIATE DIAPHRAGM



INSERT ASSEMBLY

NO SCALE

SPECIAL DETAILS

XS SHEET EXAMPLE

PRECAST-PRESTRESSED I GIRDER