

NOTE:

1. Adjust spacing of #4 hoops at post location as necessary to avoid locations of the threaded rods attaching the tubular bicycle railing to the top of the upper beam. See "TUBULAR BICYCLE RAILING DETAIL" on the "CONCRETE BARRIER TYPE 86 DETAILS No. 4" sheet.
2. For reinforcement at approach end block see "CONCRETE BARRIER TYPE 86 DETAILS No. 6" sheet. Reinforcement at departure end block is similar to approach end block except as shown in "SECTION A-A", shown on "CONCRETE BARRIER TYPE 86 DETAILS No. 2" sheet.
3. For details not shown, see "CONCRETE BARRIER TYPE 86 DETAILS No. 1" sheet and "CONCRETE BARRIER TYPE 86 DETAILS No. 2" sheet.

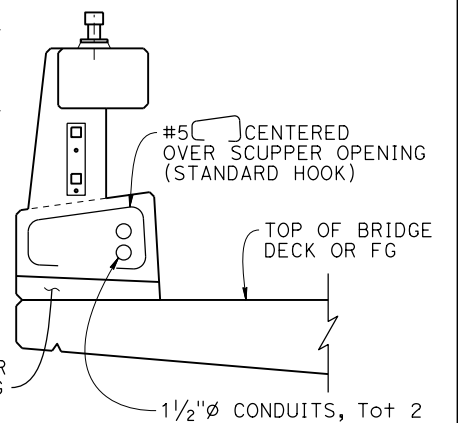
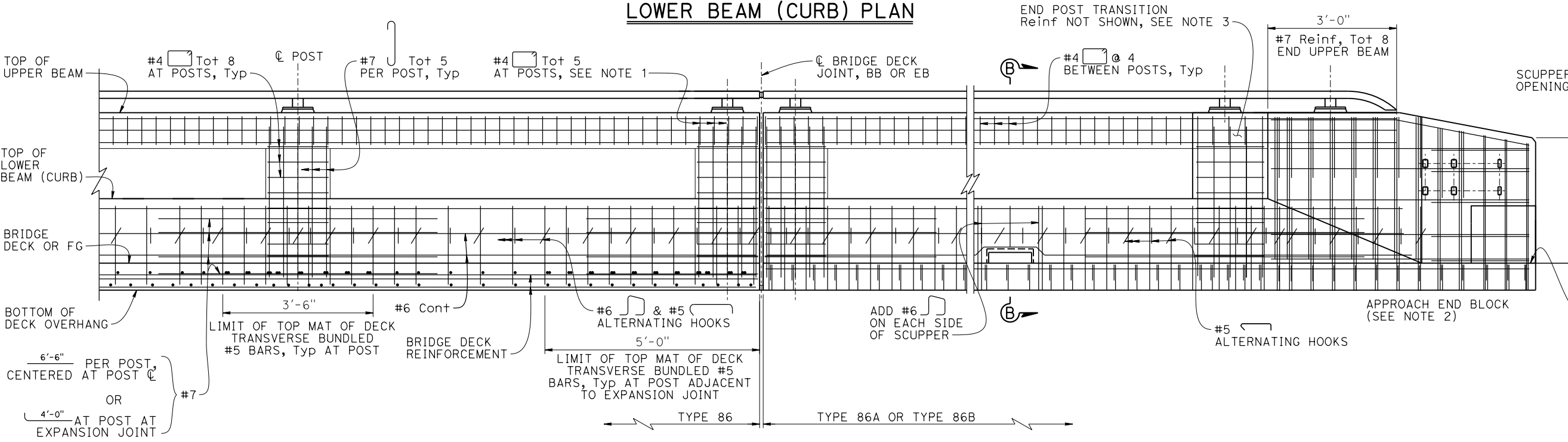
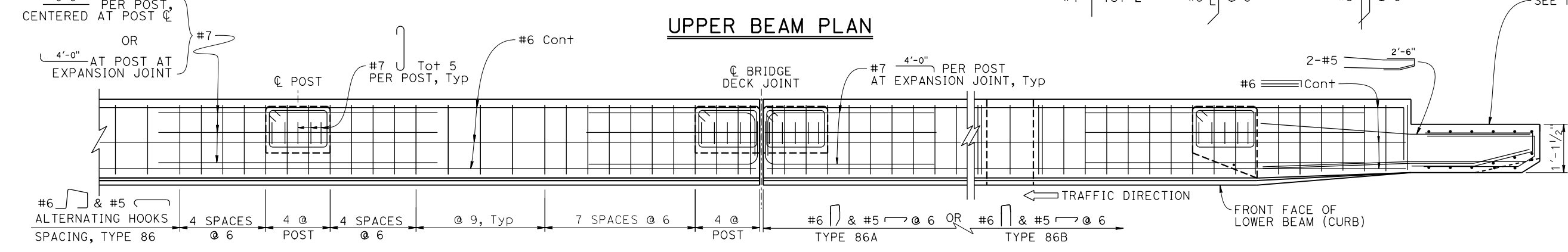
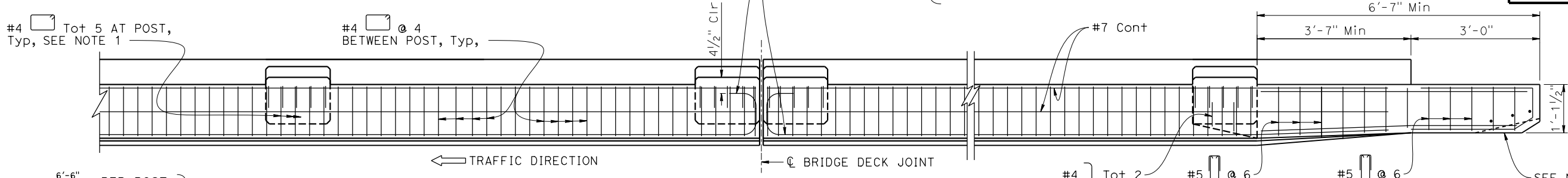
Dist	COUNTY	ROUTE	POST MILES TOTAL PROJECT	SHEET No.	TOTAL SHEETS
				X	

REGISTERED CIVIL ENGINEER DATE _____

PLANS APPROVAL DATE _____

THE STATE OF CALIFORNIA OR ITS OFFICERS OR AGENTS SHALL NOT BE RESPONSIBLE FOR THE ACCURACY OR COMPLETENESS OF SCANNED COPIES OF THIS PLAN SHEET.

THE REGISTERED CIVIL ENGINEER FOR THE PROJECT IS RESPONSIBLE FOR THE SELECTION AND PROPER APPLICATION OF THE COMPONENT DESIGN AND ANY MODIFICATIONS SHOWN.



SECTION B-B
NOTE: Not all reinforcement shown.

NO SCALE

BRIDGE STANDARD DETAILS			STATE OF CALIFORNIA		DIVISION OF ENGINEERING SERVICES		BRIDGE No. XX-XXXX		X						
xs16-126-3	April 2026	The components of the Bridge Standard Details have been prepared under the responsible charge of the Technical Owner, a registered civil engineer in the State of California.	DEPARTMENT OF TRANSPORTATION		CONCRETE BARRIER TYPE 86 DETAILS No. 3		POST MILE X.X		CONCRETE BARRIER TYPE 86 DETAILS No. 3						
Refer to: http://www.dot.ca.gov/hq/esc/techpubs/manual/bridgemanuals/bridge-standard-detail-sheets/index.html	DATE PLOTTED => 7-APR-2026	TIME PLOTTED => 14:40	ORIGINAL SCALE IN INCHES FOR REDUCED PLANS	0	1	2	3	UNIT: XXXX	COUNTY/ROUTE/ZONE: XXX/XXX/X	DISREGARD PRINTS BEARING EARLIER REVISION DATES	REVISION DATES	SHEET OF			
	FILE => xs16-126-3.dgn	USERNAME => s155182						PROJECT NUMBER & PHASE: XXXXXXXXXX1	CONTRACT No.: XX-XXXXX4		10/17/24	3/28/26	04/07/26	X	X