

NOTE: THE CONTRACTOR SHALL VERIFY ALL CONTROLLING FIELD DIMENSIONS BEFORE ORDERING OR FABRICATING ANY MATERIAL.

NOTE: For details not shown, see "ALTERNATIVE 1 & 2".

TRANSITION RAILING TYPE AGT

RSP A79B1 CONNECTION DETAIL AA

DUAL CHAMFER, SEE "CONCRETE BARRIER TRANSITION APPROACH END BLOCK DETAILS" SHEET

4" Cir Typ

#4

#6 DOWELS STAGGERED @ 4"

#5 @ 8

FG

1'-0"

NO SCALE

SECTION D-D

1'-0"

NO SCALE

SECTION B-B

1'-0"

NO SCALE

SECTION C-C

REGISTERED CIVIL ENGINEER

DATE

PLANS APPROVAL DATE

THE STATE OF CALIFORNIA OR ITS OFFICERS OR AGENTS SHALL NOT BE RESPONSIBLE FOR THE ACCURACY OR COMPLETENESS OF SCANNED COPIES OF THIS PLAN SHEET.

THE REGISTERED CIVIL ENGINEER FOR THE PROJECT IS RESPONSIBLE FOR THE SELECTION AND PROPER APPLICATION OF THE COMPONENT DESIGN AND ANY MODIFICATIONS SHOWN.

GENERAL NOTES
LOAD AND RESISTANCE FACTOR DESIGN

DESIGN:
AASHTO LRFD Bridge Design Specifications, 8th Edition with California Amendments

CT:
 $F_t = 54$ kips on Barrier

SOIL PROPERTIES:
 $\phi = 30^\circ$
 $\gamma = 120$ pcf

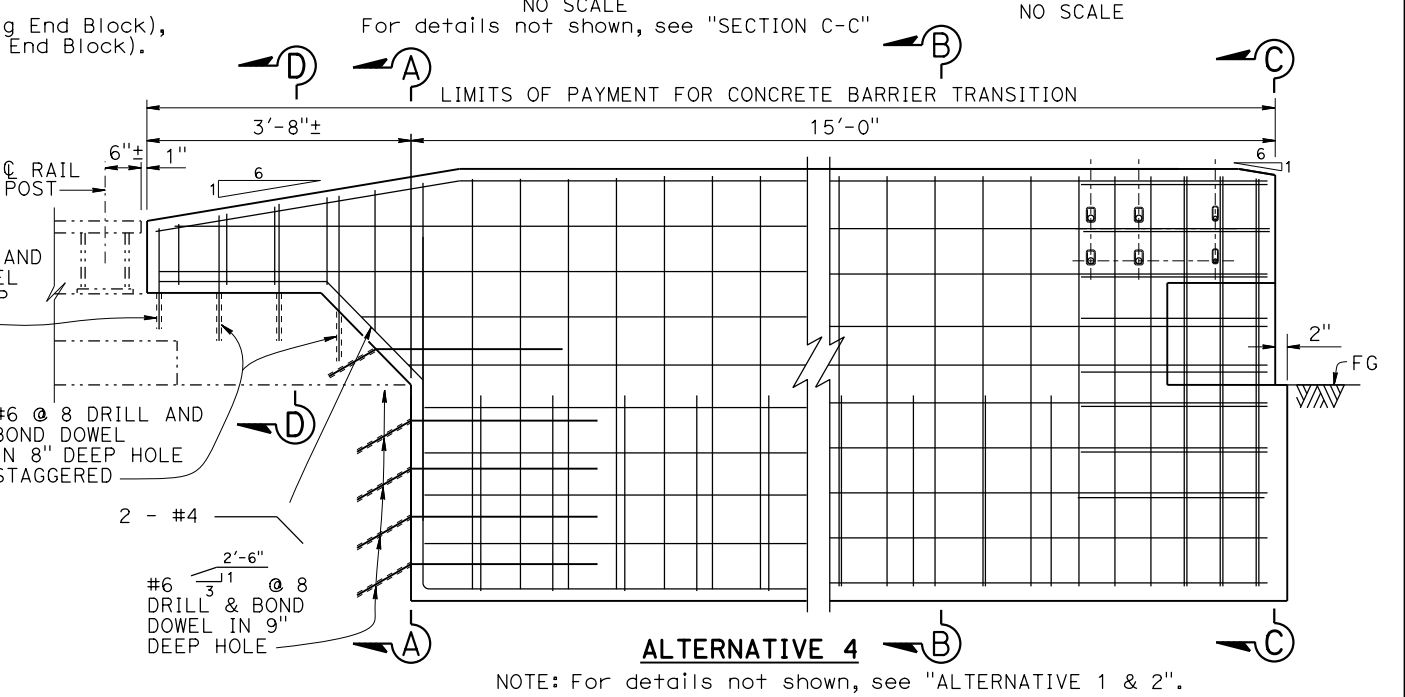
REINFORCED CONCRETE:
 $F_y = 60$ ksi
 $f'_c = 3.6$ ksi

LEGEND:
----- Existing Structure

STANDARD PLAN SHEET No.

DETAIL No.

POUR AGAINST UNDISTURBED MATERIAL, Typ



NOTE: For details not shown, see "ALTERNATIVE 1 & 2".

NOTE: For details not shown, see "CONCRETE BARRIER TRANSITION APPROACH END BLOCK DETAILS" sheet.