

GENERAL NOTES
LOAD AND RESISTANCE FACTOR DESIGN

DESIGN:
AASHTO LRFD Bridge Design
Specifications, 8th Edition
with California Amendments

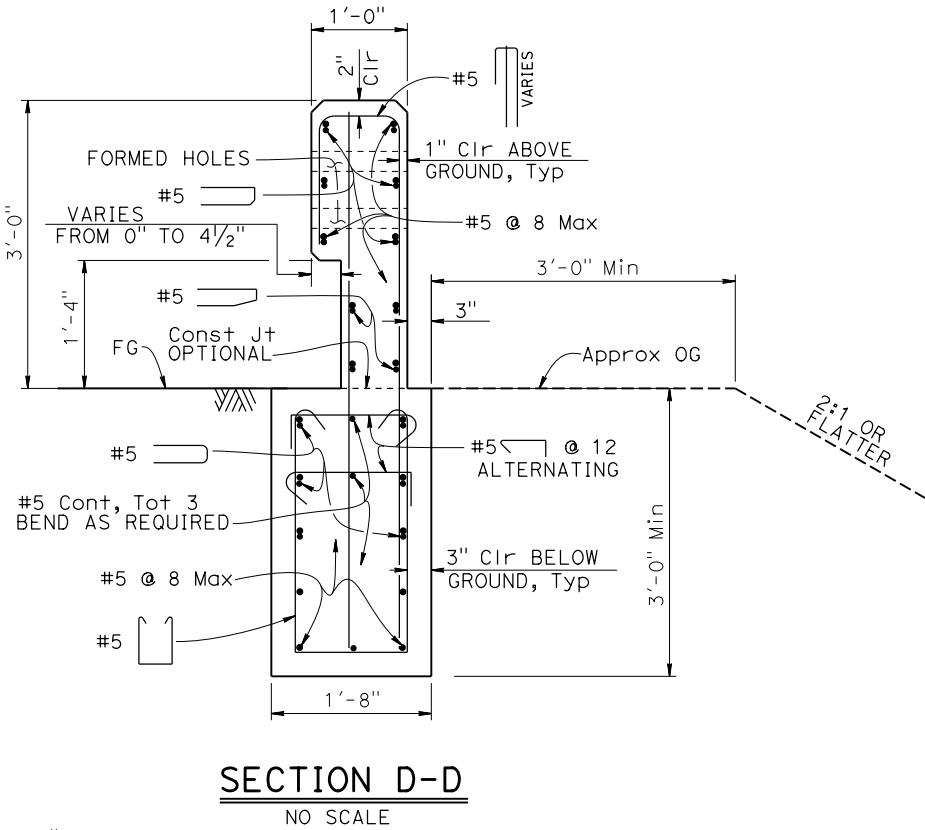
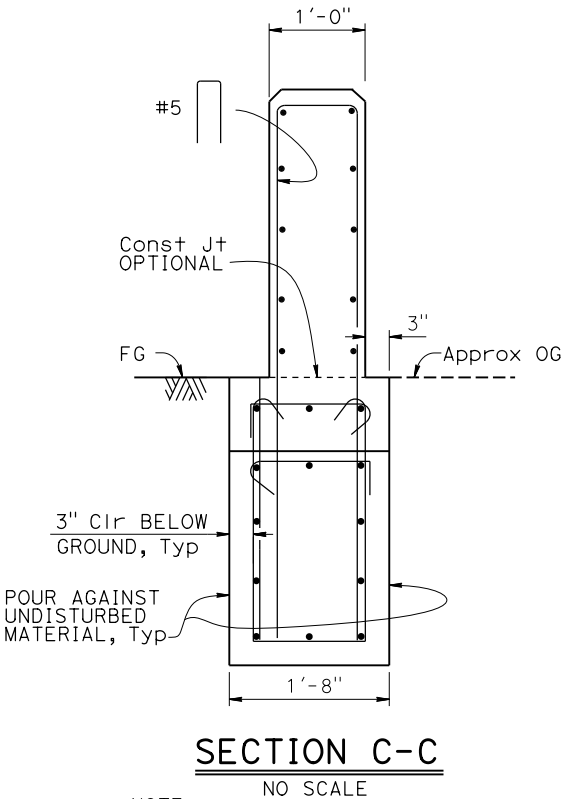
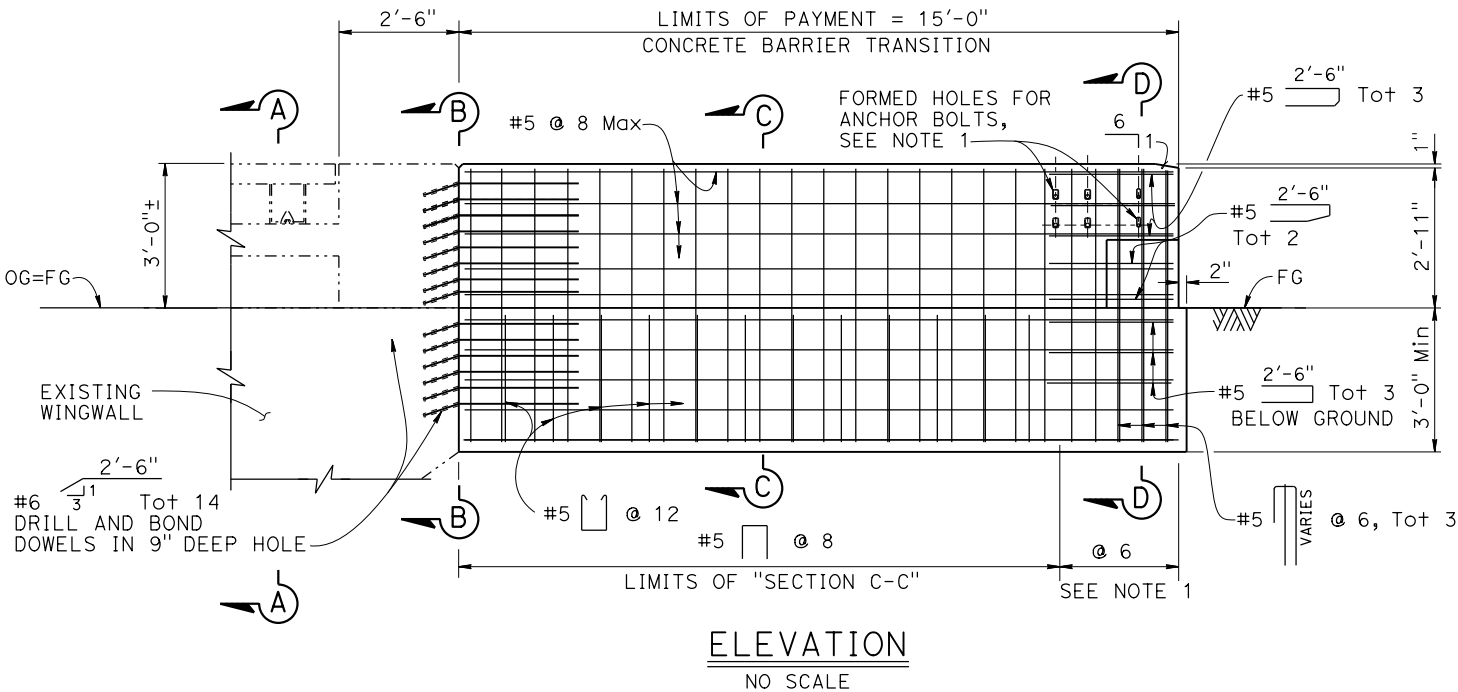
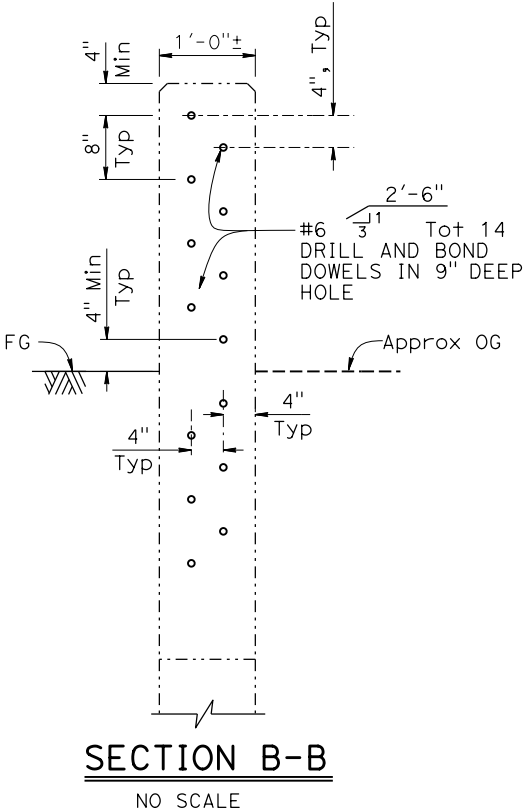
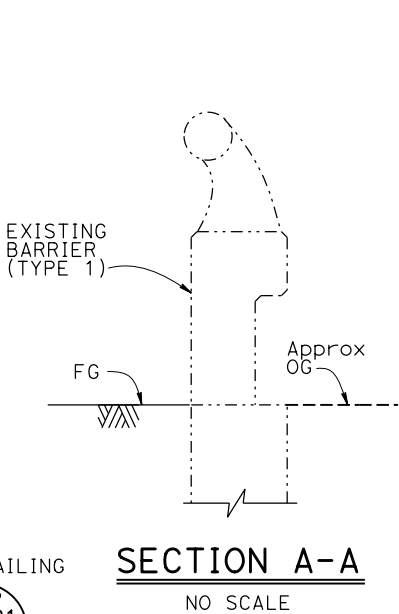
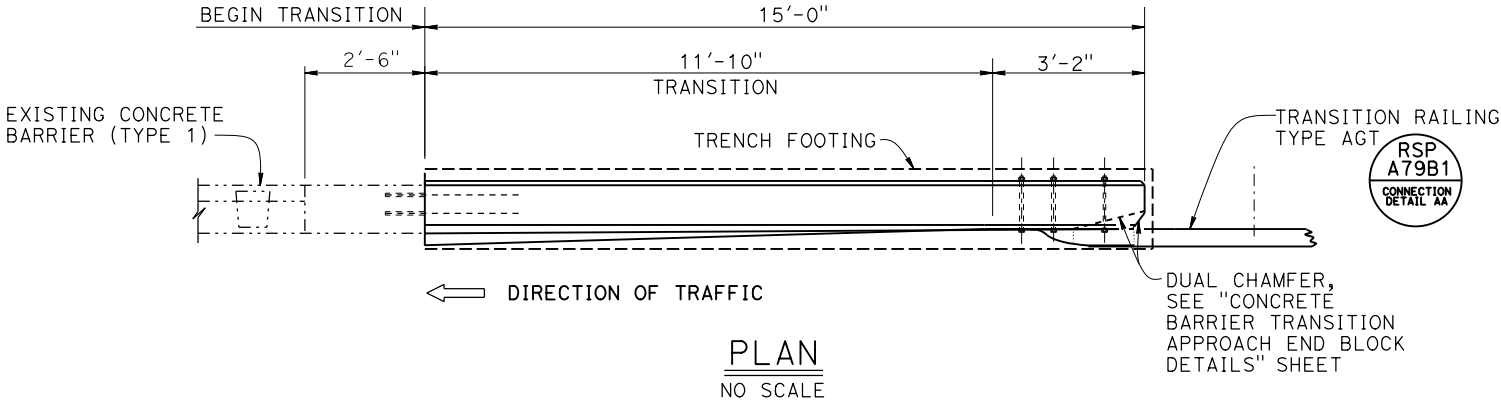
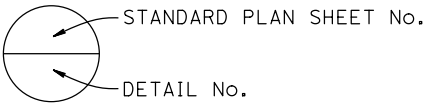
CT:
 $F_t = 54$ kips on Barrier

SOIL PROPERTIES:
 $\Phi = 30^\circ$
 $\gamma = 120$ pcf

REINFORCED CONCRETE:
 $F_y = 60$ ksi
 $f'_c = 3.6$ ksi

NOTE:
1. For additional approach end block details,
see "CONCRETE BARRIER TRANSITION APPROACH
END BLOCK DETAILS" sheet.

LEGEND:
----- Existing Structure



NOTE:
THE CONTRACTOR SHALL VERIFY ALL
CONTROLLING FIELD DIMENSIONS
BEFORE ORDERING OR FABRICATING
ANY MATERIAL.

Dist	COUNTY	ROUTE	POST MILES TOTAL PROJECT	SHEET No.	TOTAL SHEETS

REGISTERED CIVIL ENGINEER X DATE

PLANS APPROVAL DATE

THE STATE OF CALIFORNIA OR ITS OFFICERS OR AGENTS SHALL NOT BE RESPONSIBLE FOR THE ACCURACY OR COMPLETENESS OF SCANNED COPIES OF THIS PLAN SHEET.

THE REGISTERED CIVIL ENGINEER FOR THE PROJECT IS RESPONSIBLE FOR THE SELECTION AND PROPER APPLICATION OF THE COMPONENT DESIGN AND ANY MODIFICATIONS SHOWN.