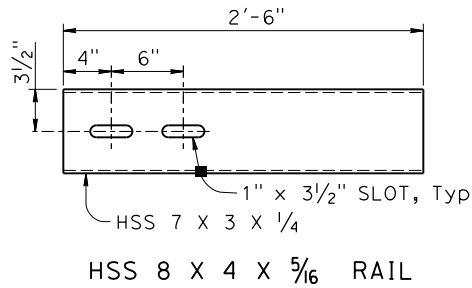
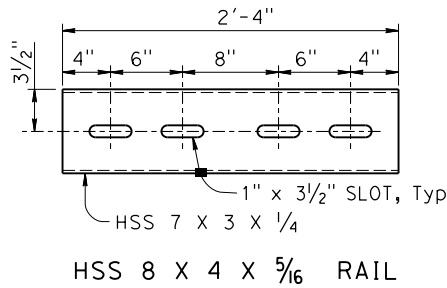
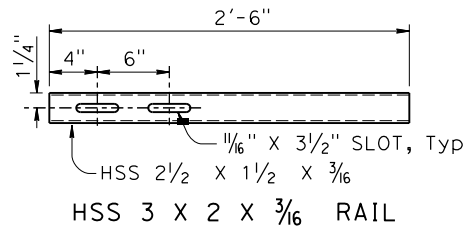
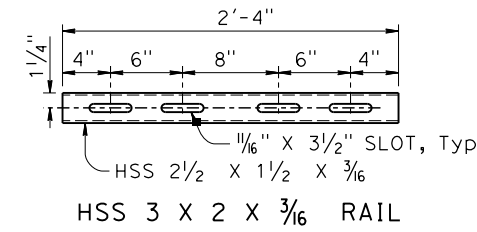
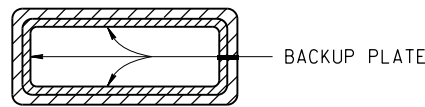
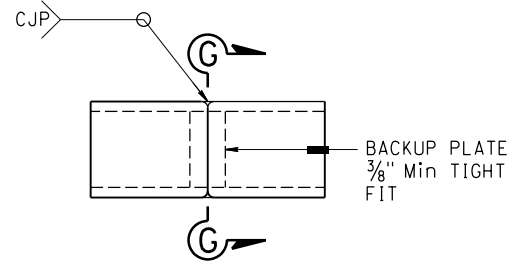


Dist	COUNTY	ROUTE	POST MILES TOTAL PROJECT	SHEET NO.	TOTAL SHEETS
DDDD	CCCC	RRRR	PPPP	????	####
REGISTERED CIVIL ENGINEER			X DATE	<div>REGISTERED PROFESSIONAL ENGINEER X No. X Exp. X CIVIL STATE OF CALIFORNIA</div>	
MM/DD/YYYY					
PLANS APPROVAL DATE					
THE STATE OF CALIFORNIA OR ITS OFFICERS OR AGENTS SHALL NOT BE RESPONSIBLE FOR THE ACCURACY OR COMPLETENESS OF SCANNED COPIES OF THIS PLAN SHEET.					
THE REGISTERED CIVIL ENGINEER FOR THE PROJECT IS RESPONSIBLE FOR THE SELECTION AND PROPER APPLICATION OF THE COMPONENT DESIGN AND ANY MODIFICATIONS SHOWN.					



**STANDARD SLEEVES
DETAILS**
NO SCALE

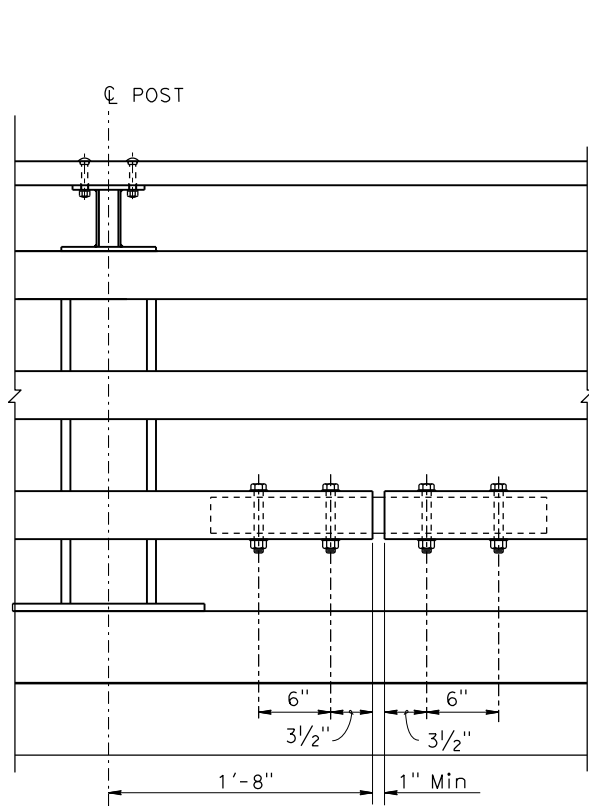
**EXPANSION SLEEVES
DETAILS**
NO SCALE



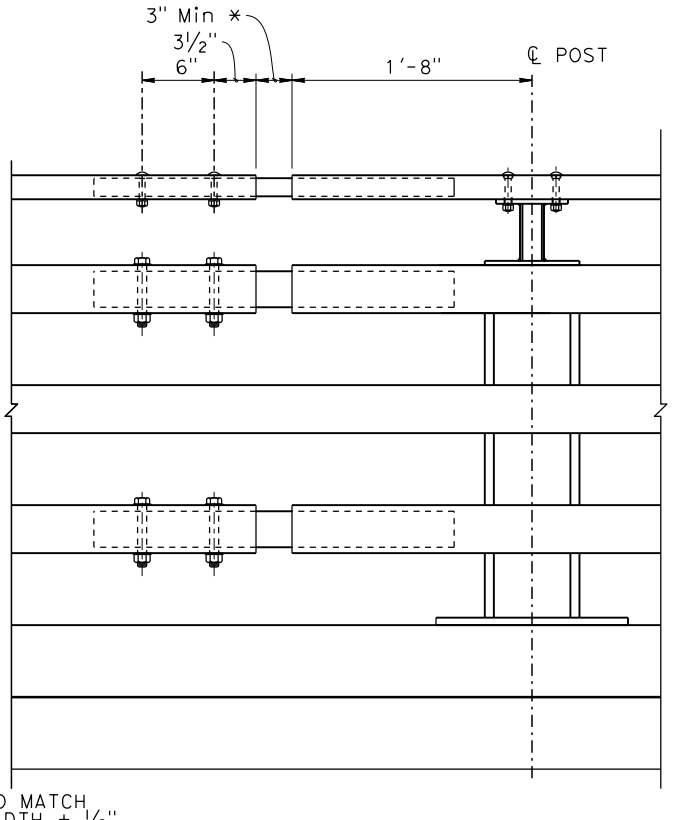
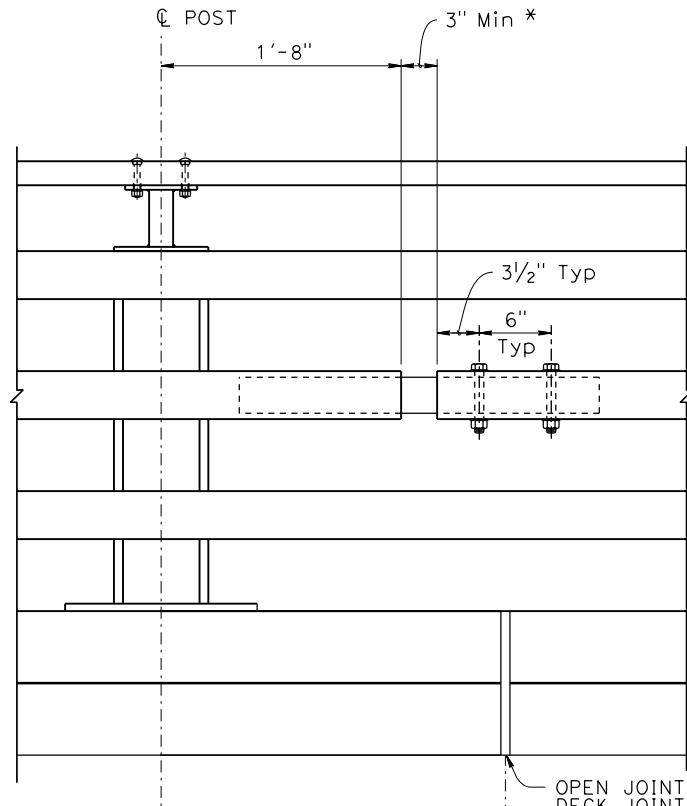
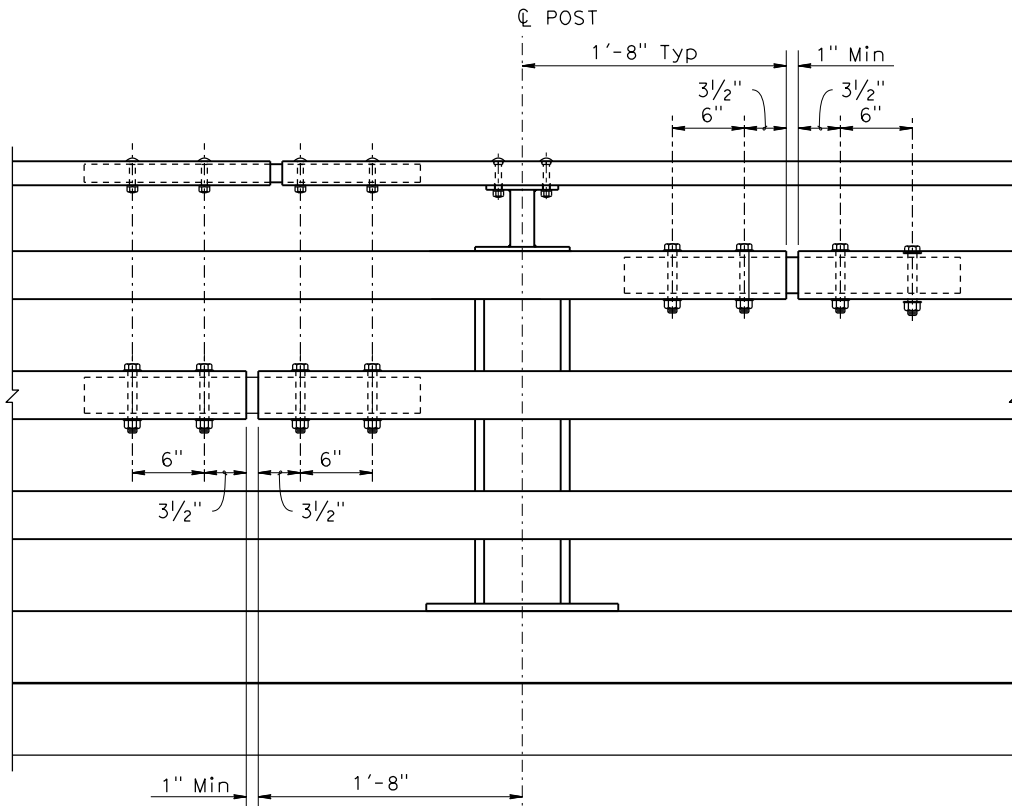
SECTION G-G

**ALTERNATE TUBE
WELDED STANDARD SPLICE**
NO SCALE

- NOTES:
- HS bolts with nut and washers, snug tightened, and thread locking system.
 - Use 1/2 inch x 3 5/16 BOLTS (HSS 3 X 2 X 3/16)
Use 3/4 inch x 5 5/16 BOLTS (HSS 8 X 4 X 5/16)
 - Each rail length must be continuous over a minimum of two posts.
 - The fabricator must check that the tubular sleeve splices conform to the dimensions indicated to assure proper clearance.
 - Except for expansion splices, not more than one splice permitted per same side of post.



STANDARD SPLICE
NO SCALE



EXPANSION SPLICE
NO SCALE
* MATCH DECK OR WALL JOINT