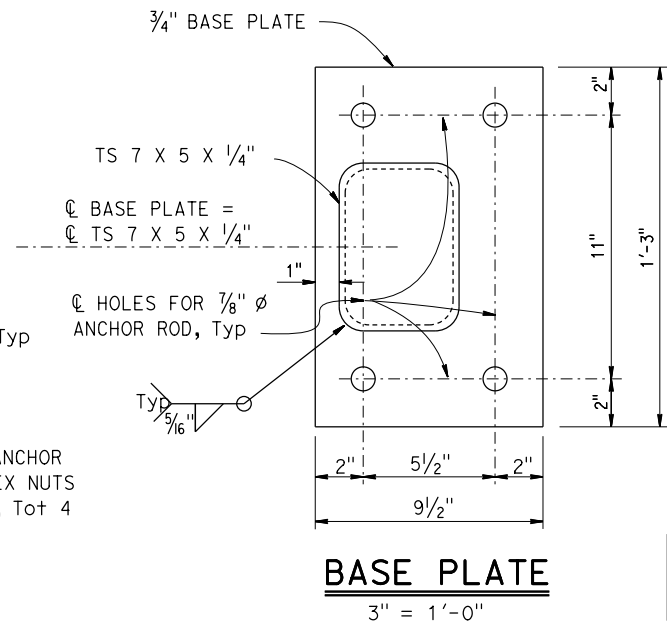
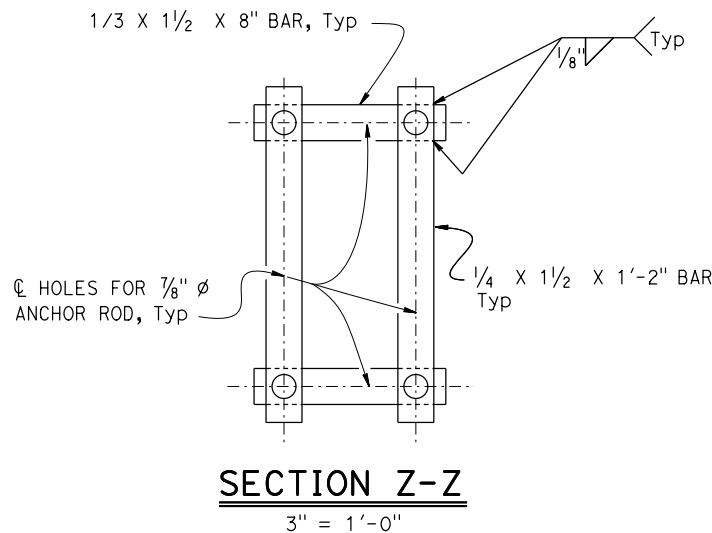


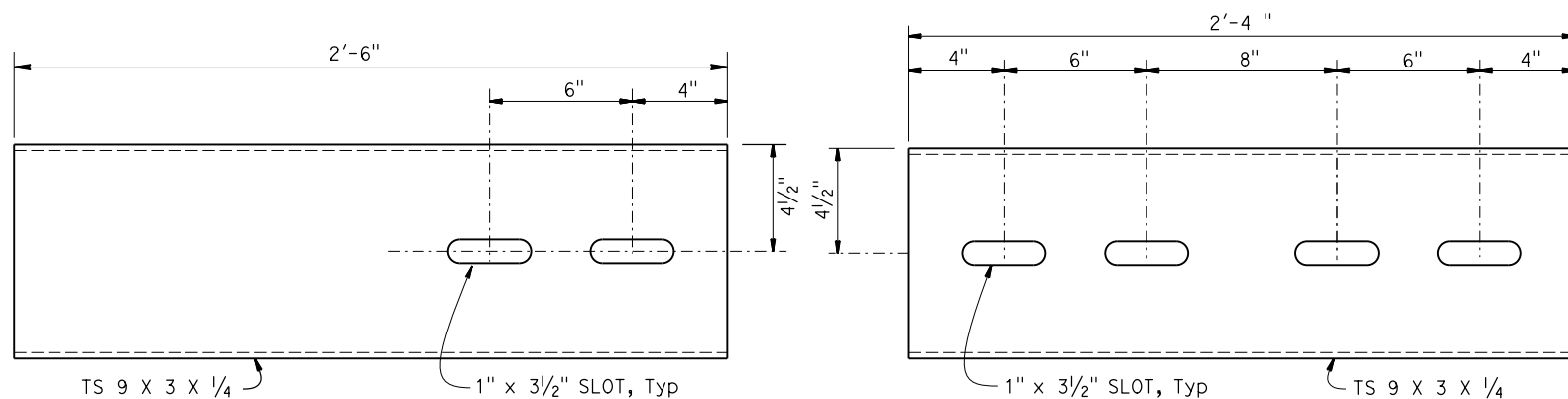
RAIL DETAIL
3" = 1'-0"



BASE PLATE
3" = 1'-0"

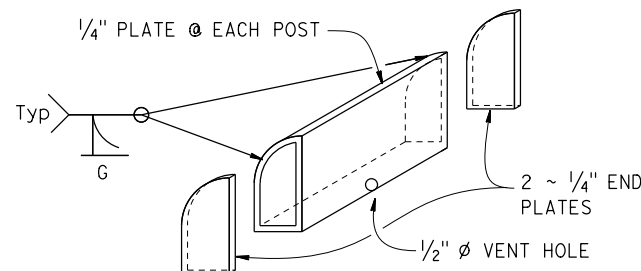


SECTION Z-Z
3" = 1'-0"

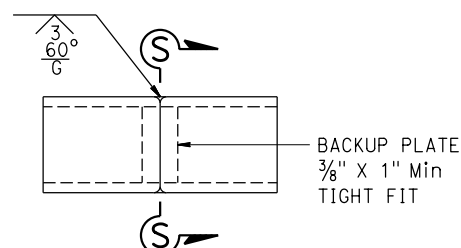


EXPANSION SLEEVE DETAIL
3" = 1'-0"
(FOR TS 10 X 4 X 1/4 RAIL)

STANDARD SLEEVE DETAIL
3" = 1'-0"
(FOR TS 10 X 4 X 1/4 RAIL)

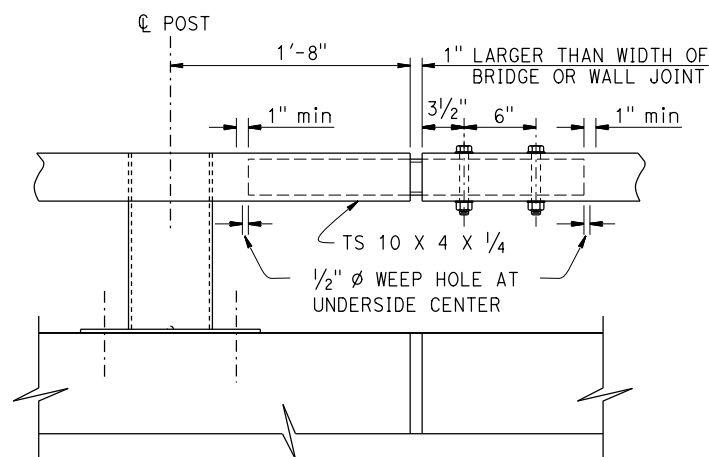


FINISH PLATE
3" = 1'-0"

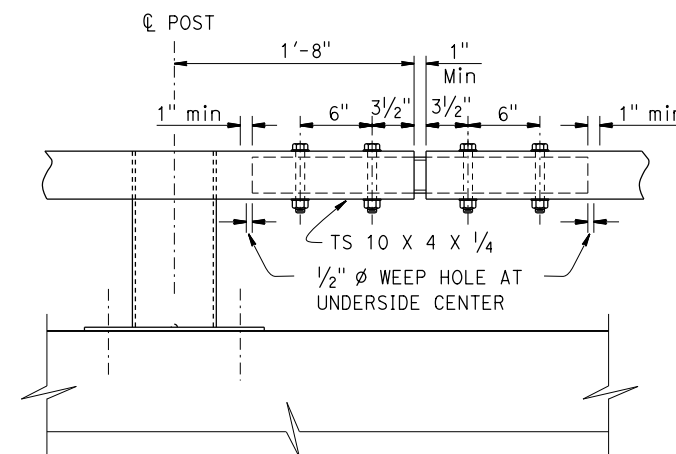


SECTION S-S

ALTERNATE TUBE WELDED SPLICE
3" = 1'-0"



EXPANSION SPLICE
1 1/2" = 1'-0"



STANDARD SPLICE
1 1/2" = 1'-0"

NOTES:
HS bolts with washers, wrench tightened
Use 3/4 inch diameter x 5 1/4 inch (TS 10 X 4 X 1/4)

DIST	COUNTY	ROUTE	POST MILES TOTAL PROJECT	SHEET No.	TOTAL SHEETS

REGISTERED CIVIL ENGINEER DATE

PLANS APPROVAL DATE

The State of California or its officers or agents shall not be responsible for the accuracy or completeness of scanned copies of this plan sheet.

The Registered Civil Engineer for the project is responsible for the selection and proper application of the component design and any modifications shown.

REGISTERED PROFESSIONAL ENGINEER
No. _____
Exp. _____
CIVIL
STATE OF CALIFORNIA