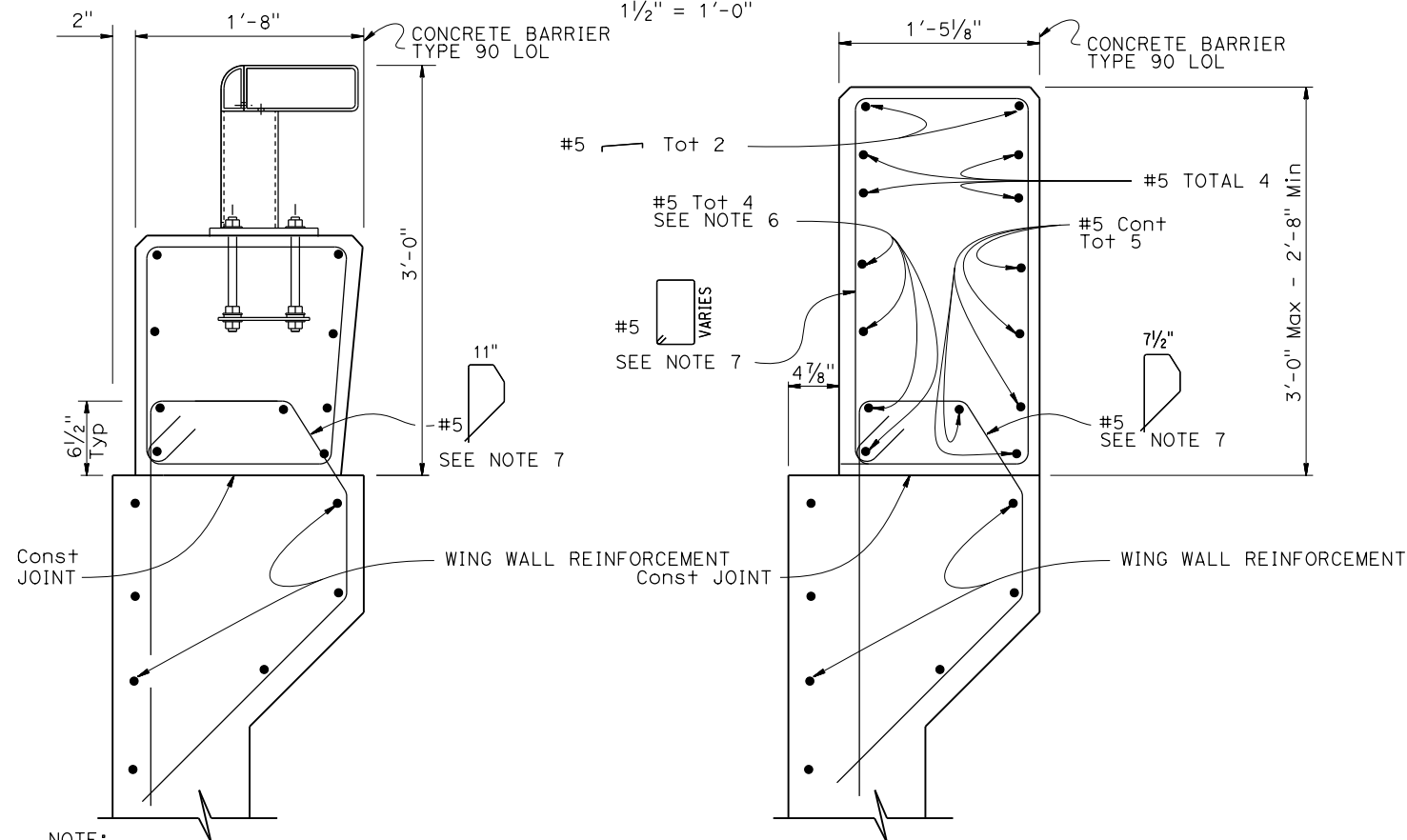
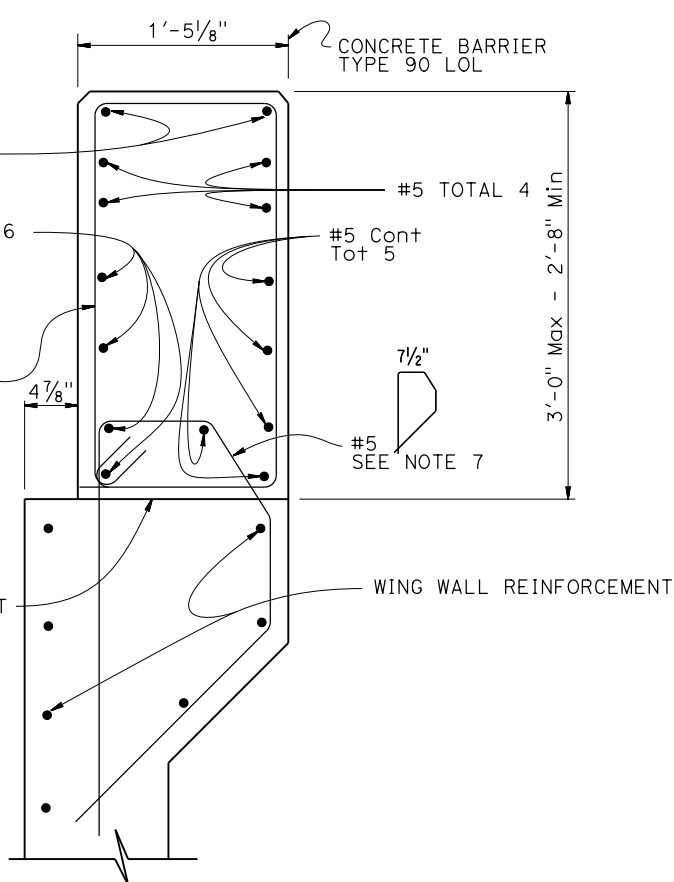


**TYPE 90**  
1 1/2" = 1'-0"



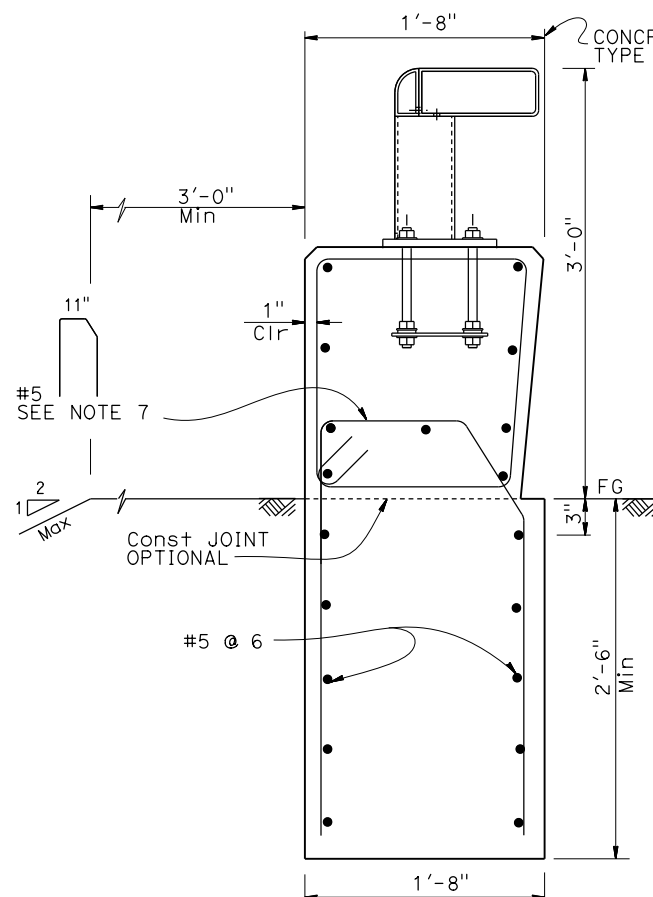
NOTE:  
For details not shown, see "TYPE 90"

**TYPE 90A-1**  
1 1/2" = 1'-0"



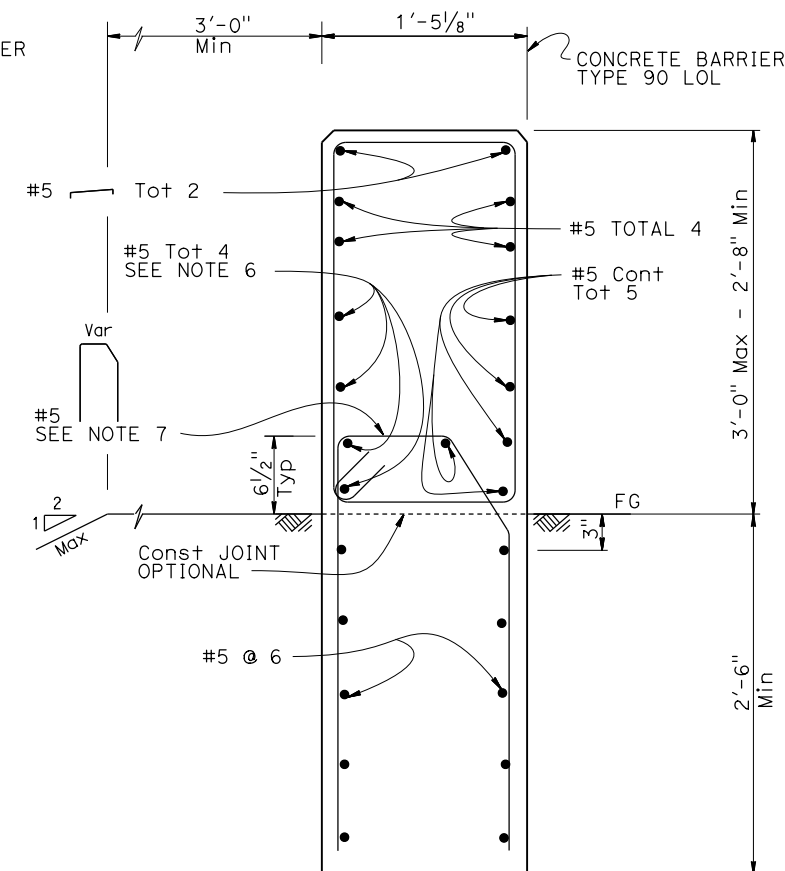
**TYPE 90A-2**  
1 1/2" = 1'-0"

- NOTES:**
- Anchor bolts may be tack welded (shop or field) to anchorage.
  - Tubing shall be bent or fabricated to fit horizontal curve when radius is less than 900'.
  - Each rail length shall be continuous over a minimum of two posts.
  - Except for expansion splices, not more than one splice shall be permitted per same side of post.
  - See "PROJECT PLANS" for approach guard railing details.
  - Extend rebar 2'-6" into Type 90A-1 & 90B-1 sections.
  - See "STIRRUP SPACING" on "CONCRETE BARRIER TYPE 90-DETAILS No. 2" sheet.
  - For rail details not shown, see "CONCRETE BARRIER TYPE 90-DETAILS No. 3" sheet.



NOTE:  
For details not shown, see "TYPE 90"

**TYPE 90B-1**  
1 1/2" = 1'-0"



**TYPE 90B-2**  
1 1/2" = 1'-0"

DIST	COUNTY	ROUTE	POST MILES TOTAL PROJECT	SHEET No.	TOTAL SHEETS

REGISTERED CIVIL ENGINEER DATE

PLANS APPROVAL DATE

The State of California or its officers or agents shall not be responsible for the accuracy or completeness of scanned copies of this plan sheet.

The Registered Civil Engineer for the project is responsible for the selection and proper application of the component design and any modifications shown.

