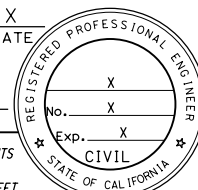
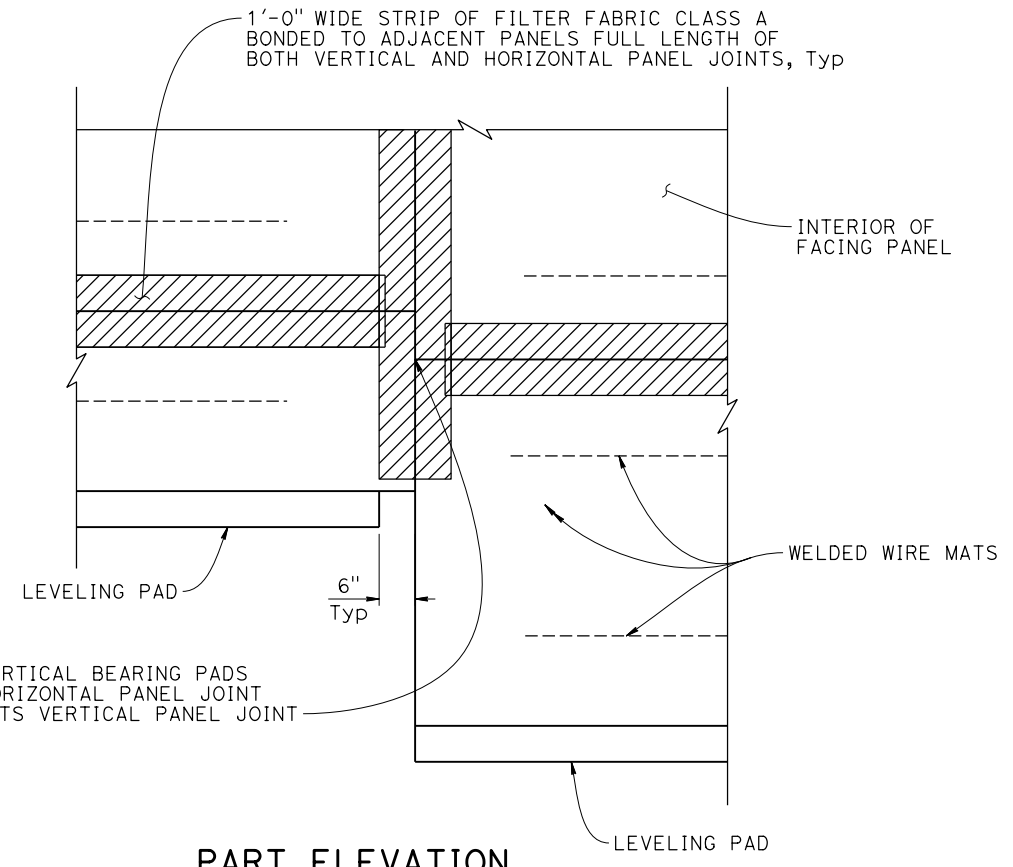
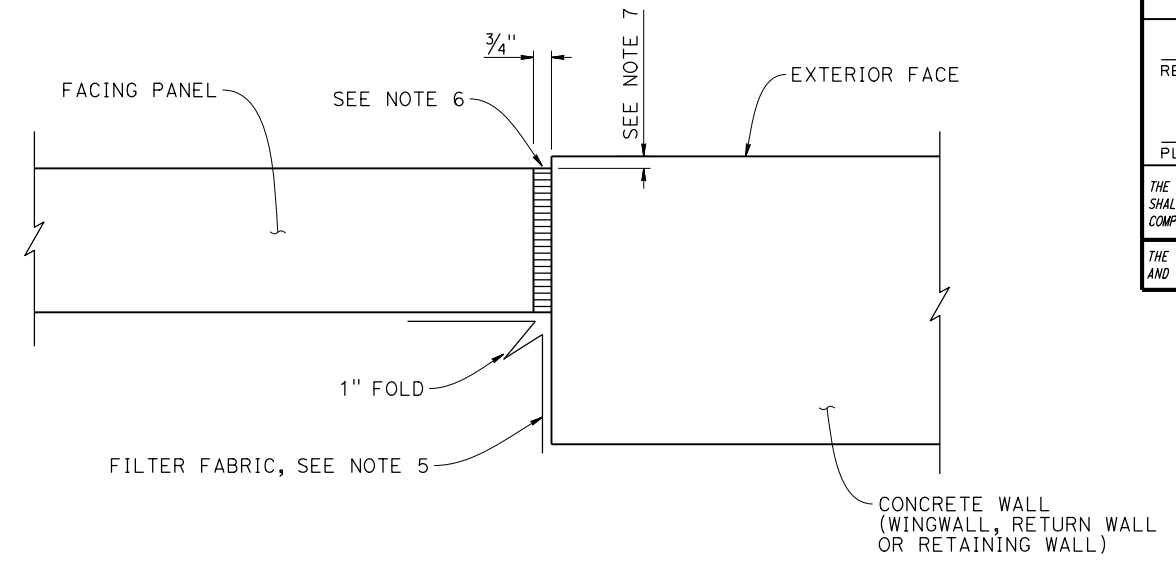


Dist	COUNTY	ROUTE	POST MILES TOTAL PROJECT	SHEET No.	TOTAL SHEETS
			X	DATE	
REGISTERED CIVIL ENGINEER			DATE		
PLANS APPROVAL DATE					
					
<small>THE STATE OF CALIFORNIA OR ITS OFFICERS OR AGENTS SHALL NOT BE RESPONSIBLE FOR THE ACCURACY OR COMPLETENESS OF SCANNED COPIES OF THIS PLAN SHEET.</small>					
<small>THE REGISTERED CIVIL ENGINEER FOR THE PROJECT IS RESPONSIBLE FOR THE SELECTION AND PROPER APPLICATION OF THE COMPONENT DESIGN AND ANY MODIFICATIONS SHOWN.</small>					



PART ELEVATION
3/4" = 1'-0"

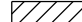

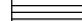


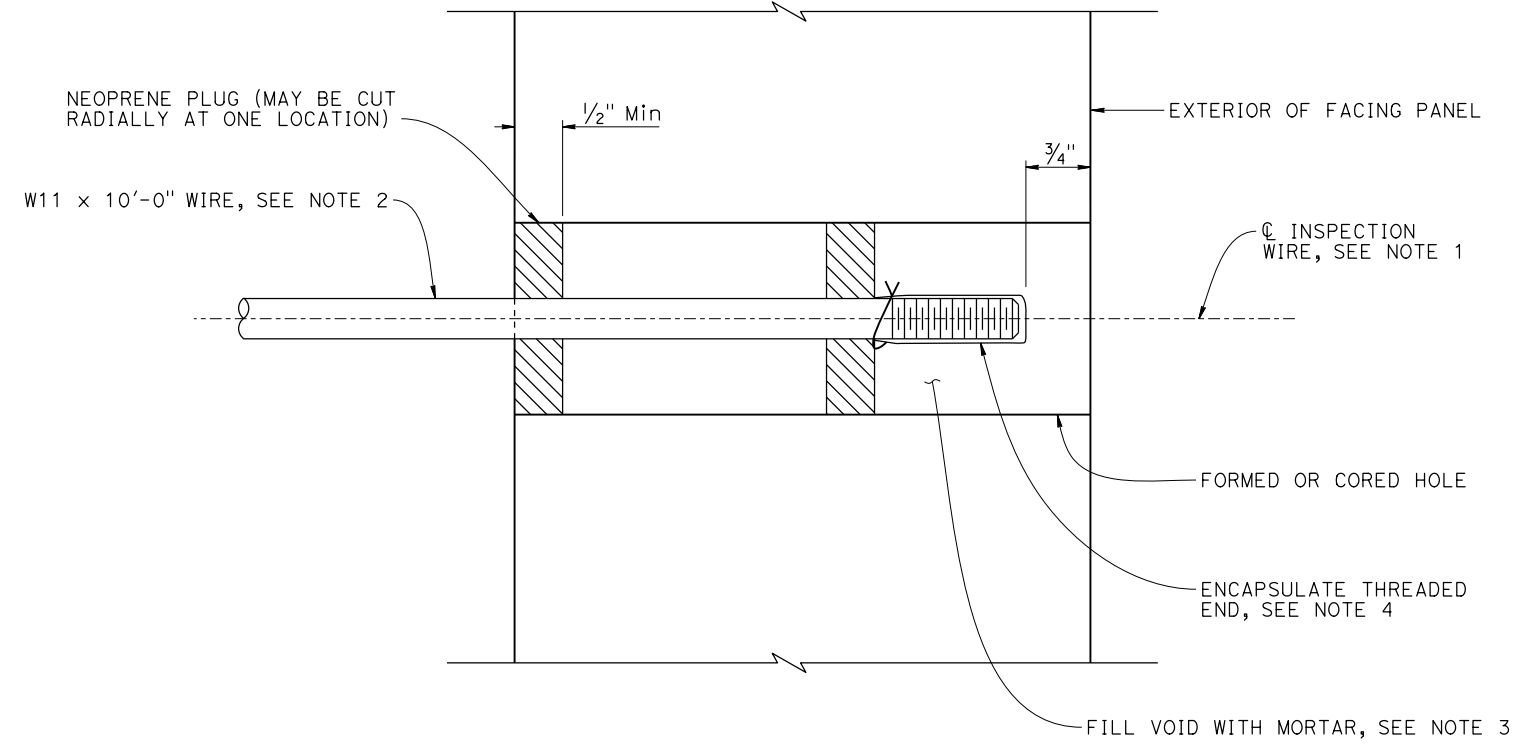
MSE FACING PANEL-TO-CONCRETE WALL JOINT DETAIL
3" = 1'-0"

NOTES:

- Center inspection wire in Facing Panel.
- Fabricate inspection wire from W11 wire representative of the welded wire mats, with 3/8" ϕ -16 UNC threads for at least 1 1/2" of one end.
- Place inspection wire horizontal and perpendicular to the wall panel prior to backfilling.
- Encapsulate threaded end with corrosion inhibiting mastic, vinyl covering, and secure with plastic tie.
- Bond a strip of Filter Fabric Class A, 1'-6" wide, to back of MSE panels and the adjacent concrete wall for entire length of vertical joint.
- Bond Expansion Joint Filler to the Concrete Wall.
- Offset between face of MSE Facing Panel and face of the Concrete Wall as dictated by location of layout lines shown elsewhere.

LEGEND:

-  Filter Fabric Class A
-  Neoprene Plug
-  Expansion Joint Filler
- UNC Unified Coarse Thread



INSPECTION WIRE DETAIL
NO SCALE