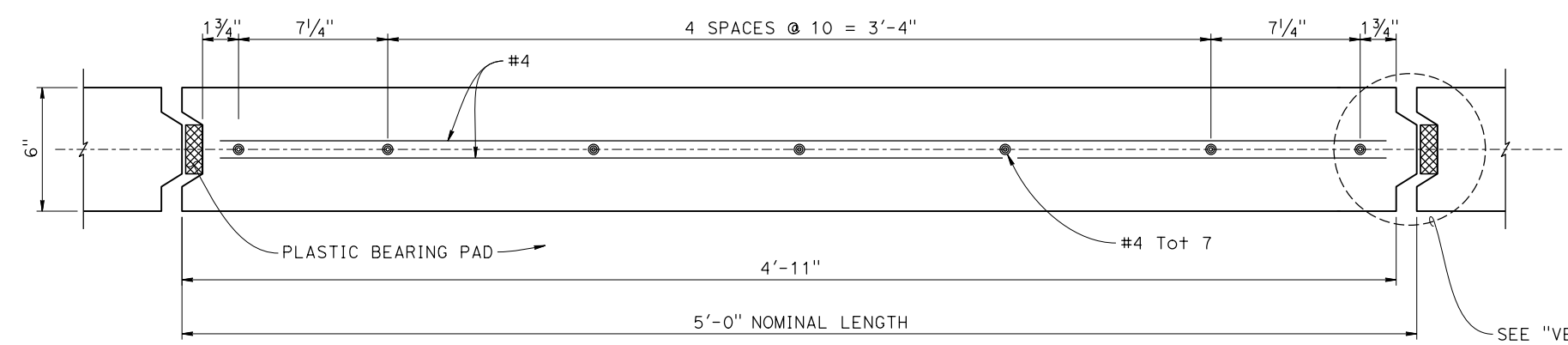
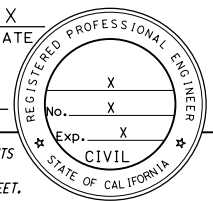
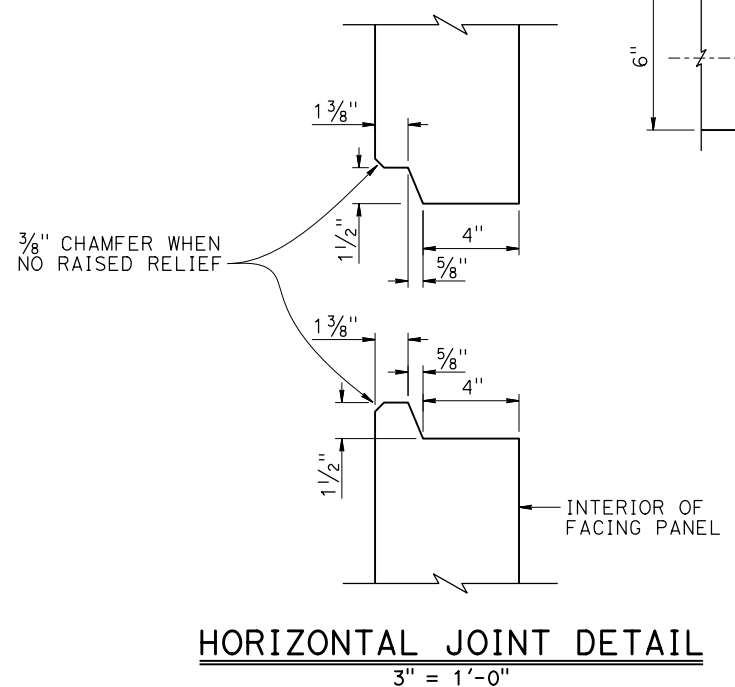


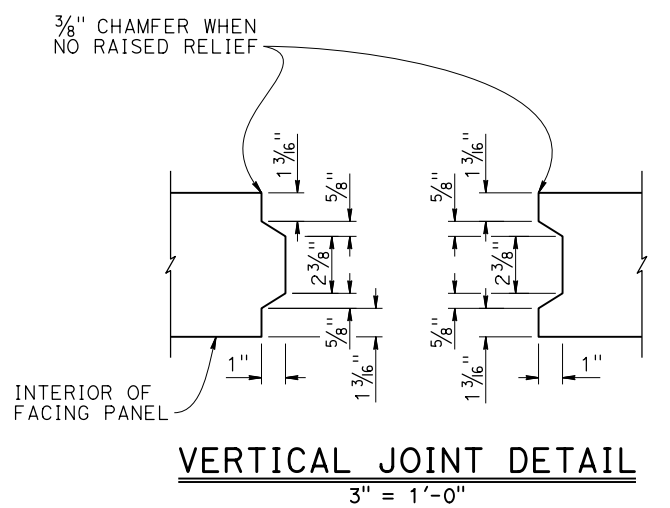
Dist	COUNTY	ROUTE	POST MILES TOTAL PROJECT	SHEET No.	TOTAL SHEETS
REGISTERED CIVIL ENGINEER			X	DATE	
PLANS APPROVAL DATE					
THE STATE OF CALIFORNIA OR ITS OFFICERS OR AGENTS SHALL NOT BE RESPONSIBLE FOR THE ACCURACY OR COMPLETENESS OF SCANNED COPIES OF THIS PLAN SHEET.					
THE REGISTERED CIVIL ENGINEER FOR THE PROJECT IS RESPONSIBLE FOR THE SELECTION AND PROPER APPLICATION OF THE COMPONENT DESIGN AND ANY MODIFICATIONS SHOWN.					



**PLAN - FACING PANEL**  
3" = 1'-0"



**HORIZONTAL JOINT DETAIL**  
3" = 1'-0"



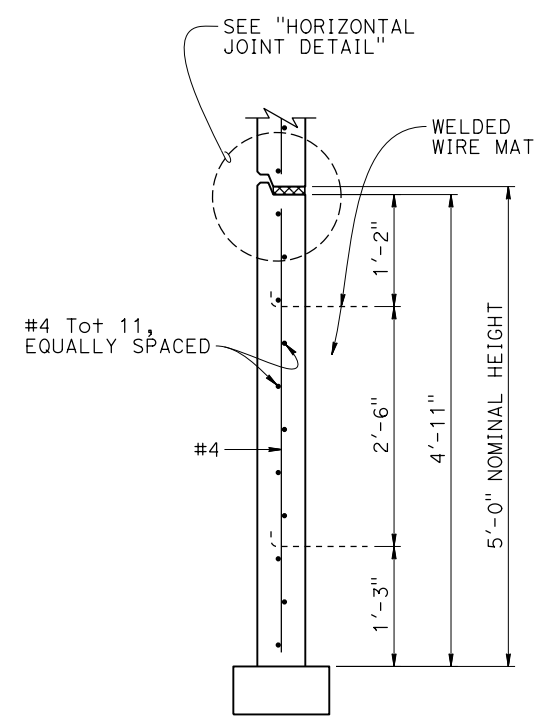
**VERTICAL JOINT DETAIL**  
3" = 1'-0"

**LEGEND:**

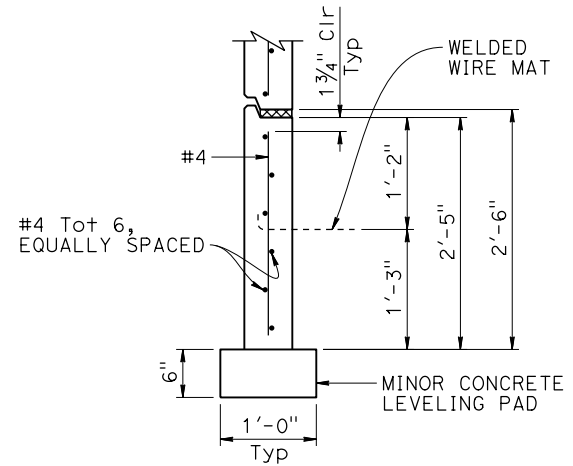
Plain Plastic Bearing Pad

**NOTES:**

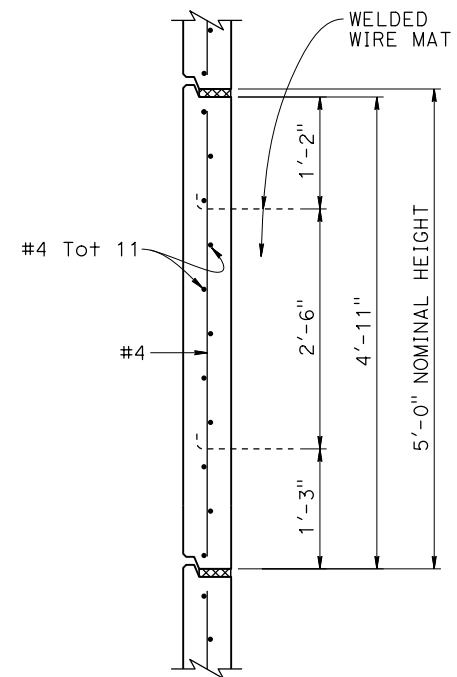
- Concrete Surface Texture and treatment not shown.
- Place Plain Plastic Bearing Pads in all of the panel joints between the panels. Place one in each vertical joint where the horizontal joints intersect. Place two per panel in each horizontal joint:  
 $\frac{3}{4}$ " x  $2\frac{3}{8}$ " x 6" for Vertical Joints  
 $\frac{3}{4}$ " x 4" x 6" for Horizontal Joints
- Bond a strip of Filter Fabric Class A, 1'-0" wide, over the full length of all panel joints.
- Top layer of welded wire mats attached parallel to top of panel when top of wall is angled or curved.
- Eliminate mid-level mat when closer than 6" to top mat, continue variable dimensions between remaining mats.



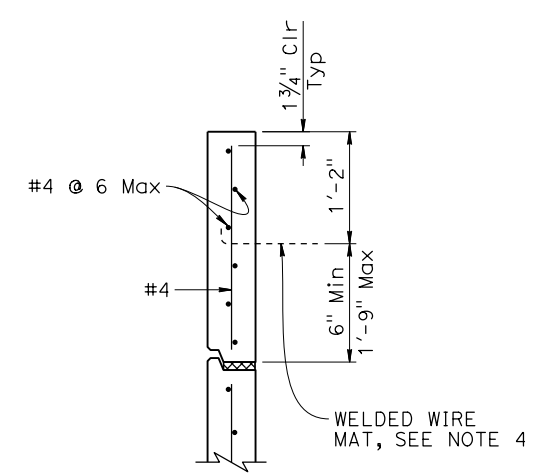
**BOTTOM PANEL**  
1" = 1'-0"



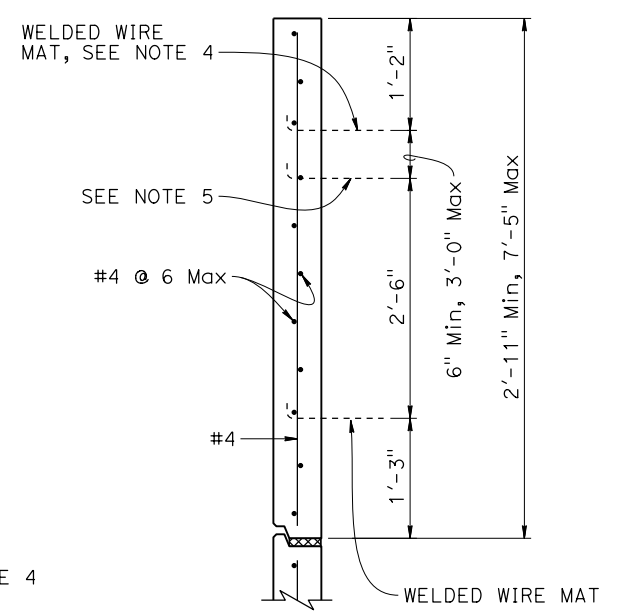
**BOTTOM HALF PANEL**  
1" = 1'-0"



**INTERMEDIATE PANEL**  
1" = 1'-0"



**TOP HALF PANEL**  
1" = 1'-0"



**TOP PANEL WITH MULTIPLE MATS**  
1" = 1'-0"