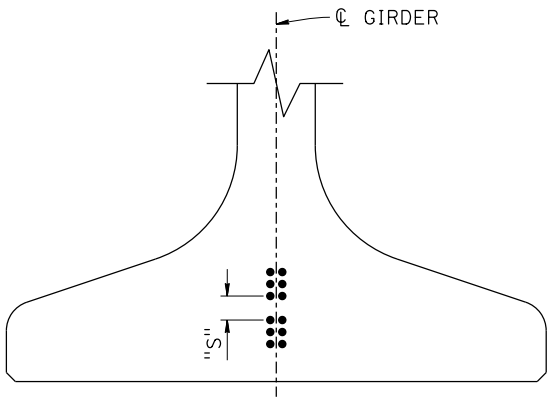


NOTE: Girder ends to be cast such that a level surface is provided at bearing pads.

ELEVATION

| GIRDER DESIGN TABLE | | | | | | | | | | |
|---------------------|-------------------|------------------|-----------|-------------------------|--|-----------|-------------------------|-----------------|-----------------------------------|--------------|
| LOCATION | GIRDER LENGTH (L) | GIRDER DEPTH (D) | "X" (in.) | JACKING FORCE (P) (kip) | A _s , Min (in. ²) | "Y" (in.) | CONCRETE STRENGTH (ksi) | | MIDSPAN DEAD LOAD DEFLECTION (ft) | |
| | | | | | | | f' _{ci} | f' _c | DECK | RAIL |
| GIRDER A | | | 4 | | | | | | | #_ x _ Tot _ |
| GIRDER B | | | 4 | | | | | | | |
| GIRDER C | | | 4 | | | | | | | |
| GIRDER * | | | 4 | | | | | | | |

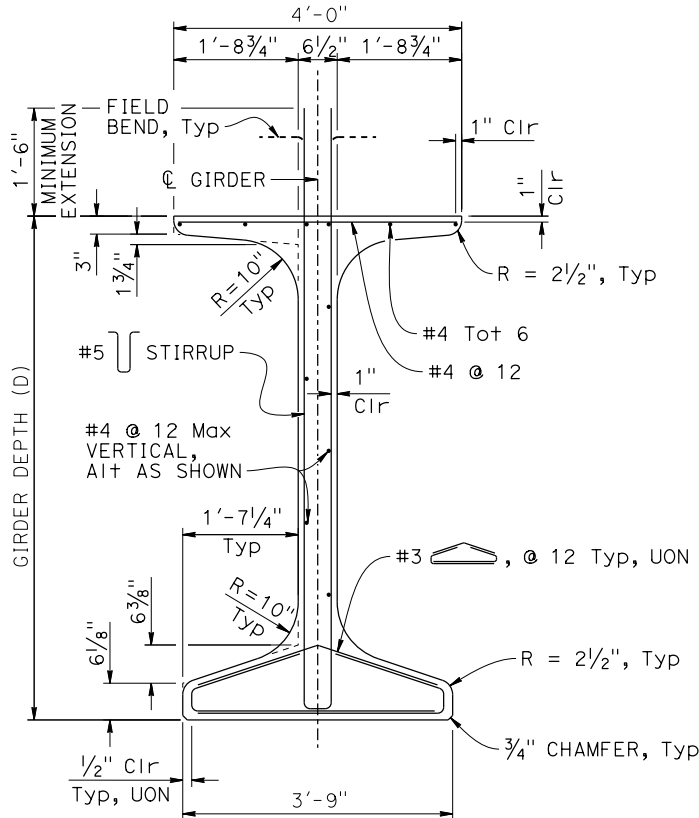


STRAND CLEARANCES NOTES:

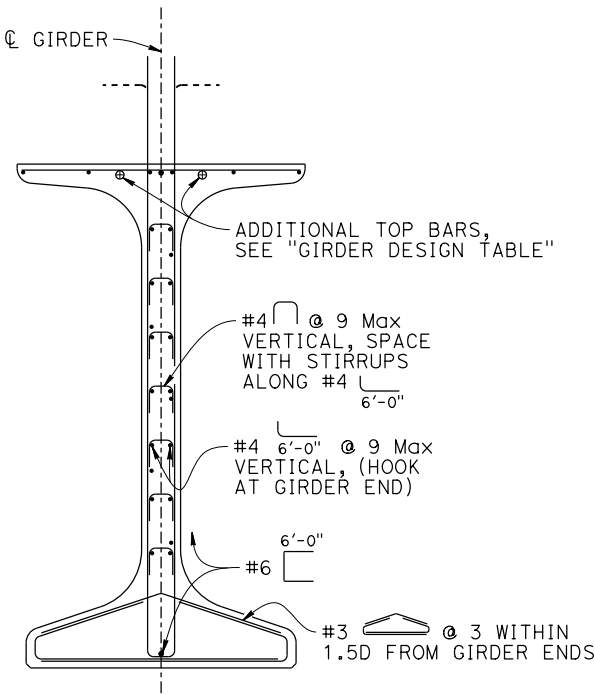
- Strands may be bundled in groups consisting of 3 vertically and 2 horizontally at midspan and separated at the ends.
- The minimum distance "S" between groups or individual strands is 2" for 0.6"Ø strands.
- "S" is measured between centers of adjacent strands.
- Authorization of Engineer is required for deviation.

NOTES:

- The jacking force (P) is the force required at the center of the span before all design losses. The jacking force does not include only fabrication specific losses.
- Concrete strength:
f'_{ci} is at time of initial stressing
f'_c is at the 28-day compression strength
- Deflection components will be used to set screed line elevations.
- Screed line elevations for deck concrete will be determined by the Engineer.
- Prestressing strand shall be 270 ksi low relaxation.
- Contractor may interpolate "JACKING FORCE" and "X" value between the limits shown, as approved by the Engineer.
- There must be a minimum of two hold downs per girder for the prestressing within the span.
- A_s, Min is the minimum area required of prestressing steel.
- For "DETAIL B" and "WELDED WIRE REINFORCEMENT (WWR) ALTERNATIVE", see "PC/PRETENSIONED WIDE FLANGE GIRDER (MISC DETAILS)" sheet.



TYPICAL SECTION

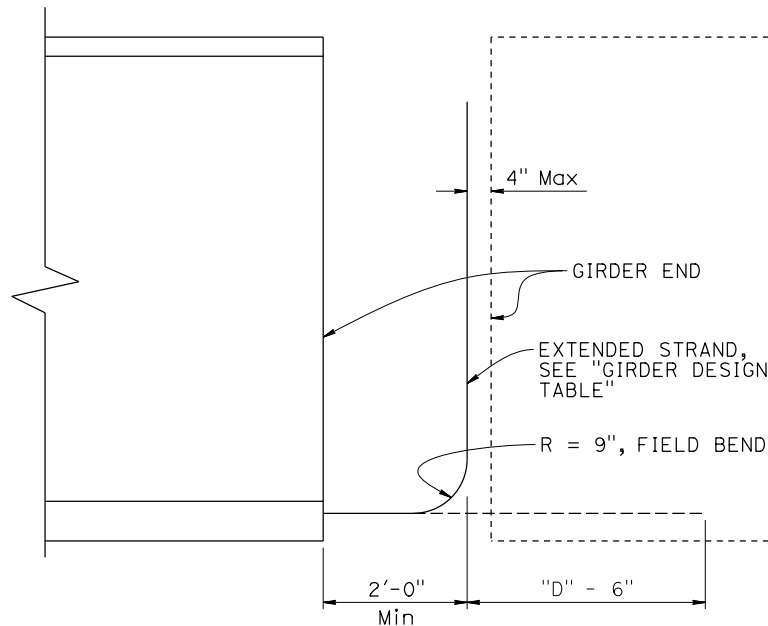


NOTE: For details not shown, see "TYPICAL SECTION".

SECTION A-A

NOTE: See "STRAND CLEARANCES NOTES" for additional information.

CLEARANCES FOR PRETENSIONED STRANDS



STRAND EXTENSION HOOK DETAIL FOR CONTINUITY DIAPHRAGM (AT BENT)

NO SCALE

| | | | | | | | | | | | | | | | | | |
|---|-------------------------------|------------|------|-----------|--|--|--|---|---|---|---|---|---|--|----------------|------------|---------|
| BRIDGE STANDARD DETAILS | | DESIGN | BY X | CHECKED X | STATE OF CALIFORNIA DEPARTMENT OF TRANSPORTATION | DIVISION OF ENGINEERING SERVICES | BRIDGE No. | X | PC/PRETENSIONED WIDE FLANGE GIRDER (HARPED STRANDS) | | | | | | | | |
| xsl-122-2 FILE No. | October 2025 APPROVAL DATE | DETAILS | BY X | CHECKED X | | | XX-XXXX | | | | | | | | | | |
| | | QUANTITIES | BY X | CHECKED X | | | POST MILE X.X | | | | | | | | | | |
| Refer to: http://www.dot.ca.gov/hq/esc/techpubs/manual/bridgemanuals/bridge-standard-detail-sheets/index.html | | | | | DATE PLOTTED => 29-SEP-2025 FILE => xsl-122-2.dgn | TIME PLOTTED => 14:56 USERNAME => s155182 | ORIGINAL SCALE IN INCHES FOR REDUCED PLANS | 0 | 1 | 2 | 3 | UNIT: XXXX PROJECT NUMBER & PHASE: XXXXXXXXXX1 | COUNTY/ROUTE/ZONE: XXX/XXX/X CONTRACT No.: XX-XXXXX4 | DISREGARD PRINTS BEARING EARLIER REVISION DATES | REVISION DATES | SHEET 2 | OF 3 |