



Bridge Design Details 8.6 January 2023

Variable Bay Transverse Reinforcement

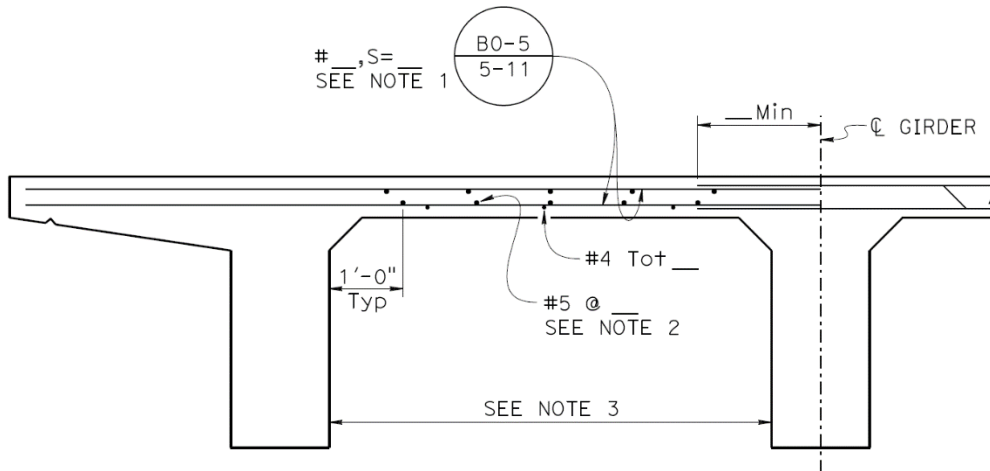


Figure 8.6.1 Transverse Reinforcement for Exterior Girders

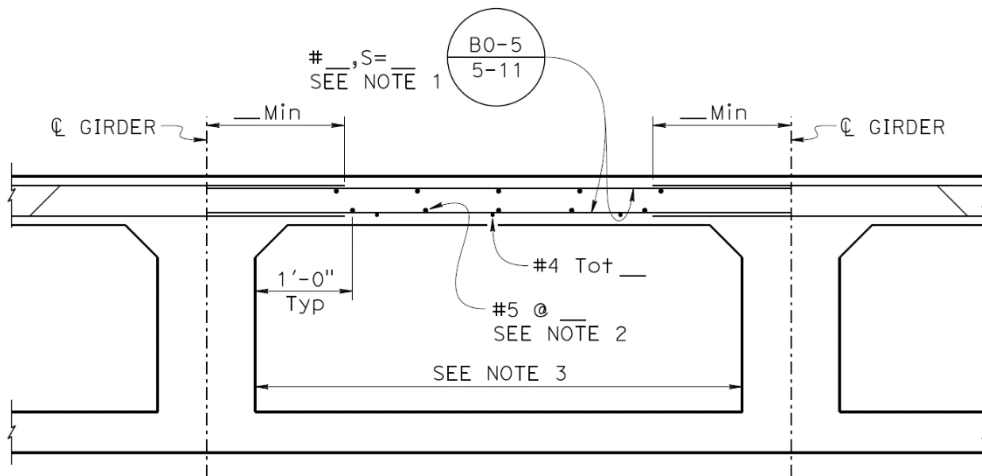


Figure 8.6.2 Transverse Reinforcement for Interior Girders

Notes:

1. Use the same size bar at $\frac{3}{4}$ the spacing of adjacent transverse reinforcement. Transverse bar spacing is consistent for both arrangements, see *Standard Plan B0-5*.
2. The designer determines the required distribution of reinforcement.
3. Deck slab and soffit may be thickened, or larger bars used if the variable bay is wider than the adjacent bay.