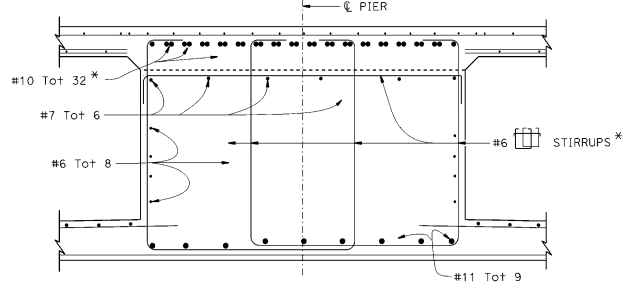
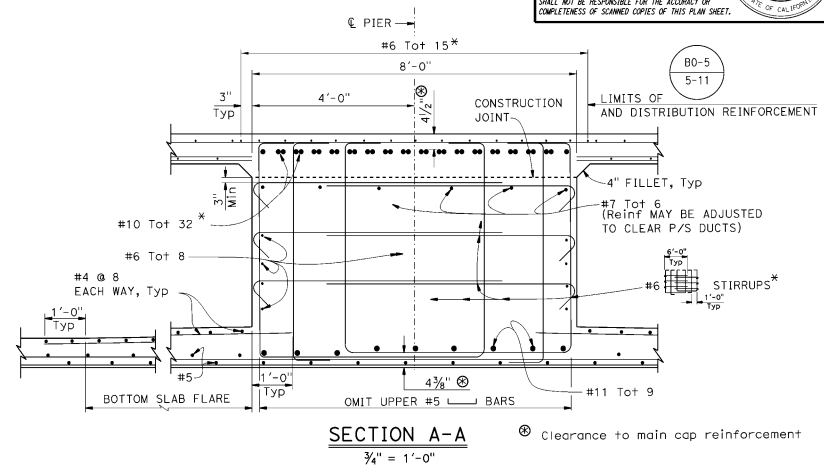
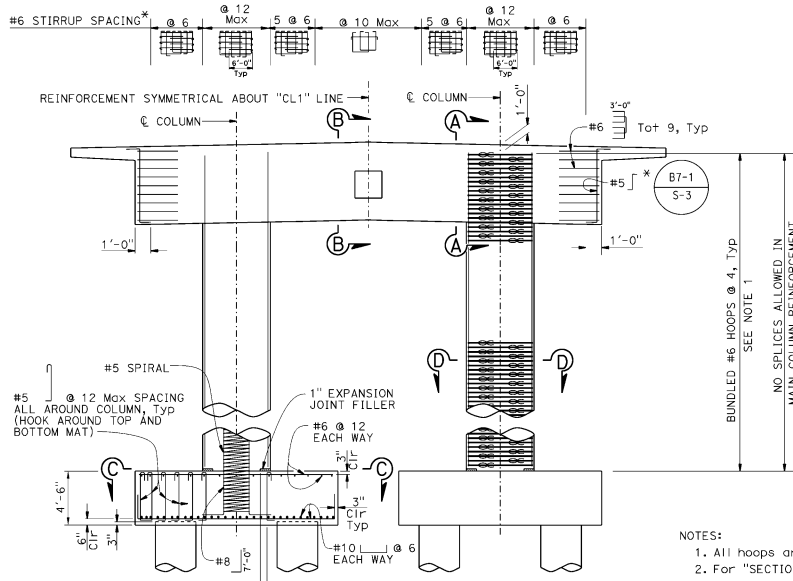
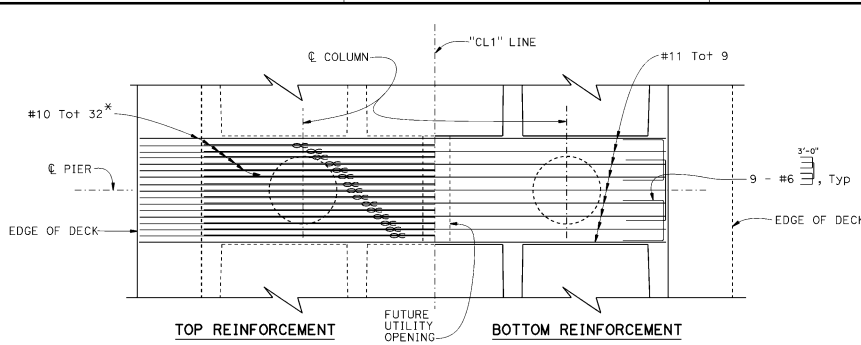




Figure 7A.A.1 Detailing Example 1



- NOTES:
1. All hoops are Ultimate butt spliced continuous.
 2. For "SECTION C-C" and "SECTION D-D", see "PIER DETAILS" sheet.

- LEGEND:
- Bundled bars
 - * Epoxy coated reinforcement

Dist	COUNTY	ROUTE	POST MILES	SHEET	TOTAL
			TOTAL PROJECT	No.	SHEETS
			02-03-19		
REGISTERED CIVIL ENGINEER			DATE		
MM/DD/YYYY					
PLANS APPROVAL DATE					
<small>THE STATE OF CALIFORNIA OR ITS OFFICERS OR AGENTS SHALL NOT BE RESPONSIBLE FOR THE ACCURACY OR COMPLETENESS OF SCANNED COPIES OF THIS PLAN SHEET.</small>					

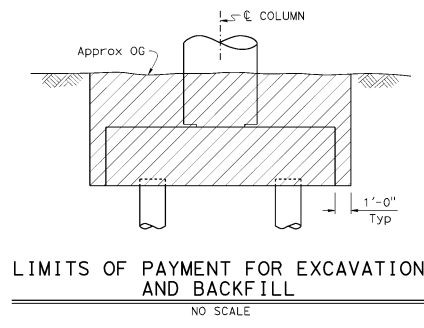
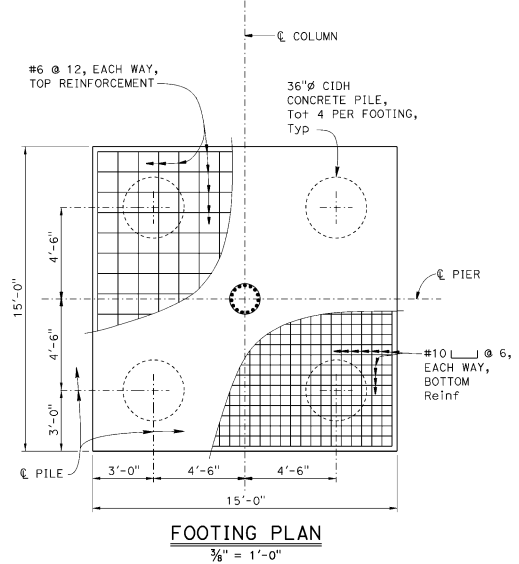
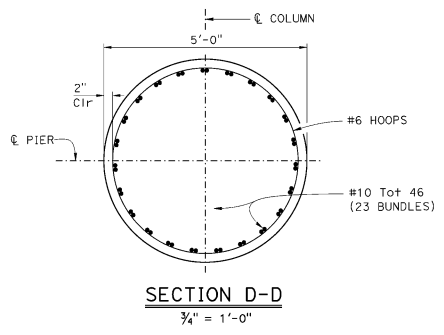
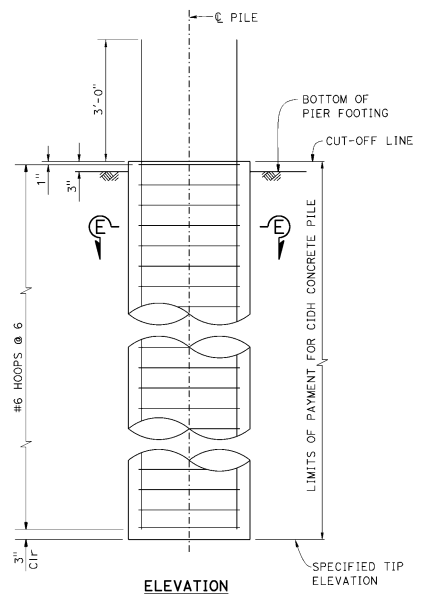
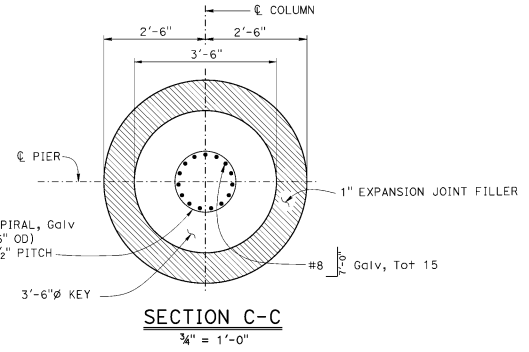
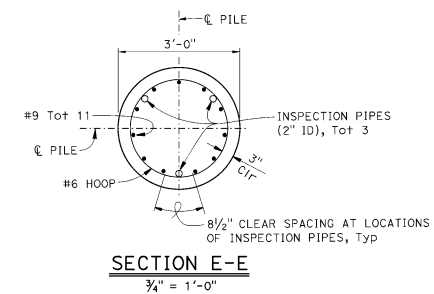
NOTE: To reflect current detailing standards, this sheet may have been modified from its original version.

DESIGN	BY Engineer 1	CHECKED Engineer 2	BRIDGE NO.	09-0079	HAMILTON BRANCH BRIDGE (REPLACE) PIER LAYOUT
DETAILS	BY Detailer 1	CHECKED Engineer 2	POST MILE	8.9B	
QUANTITIES	BY Engineer/Detailer 3	CHECKED Engineer/Detailer 4	CONTRACT NO.:	02-4E6404	
STATE OF CALIFORNIA DEPARTMENT OF TRANSPORTATION			DIVISION OF ENGINEERING SERVICES STRUCTURE DESIGN DESIGN BRANCH X		COUNTY/ROUTE/ZONE: XXX/XXX/X DISREGARD PRINTS BEARING EARLIER REVISION DATES
DATE PLOTTED -> 12-AUG-2025 TIME PLOTTED -> 11:53 ORIGINAL SCALE IN INCHES FOR REDUCED PLANS 0			UNIT: XXXX PROJECT NUMBER & PHASE: 0212000111		REVISION DATES SHEET OF 05-28-14 13-03-14 12-08-14 7 18



Figure 7A.A.2 Detailing Example 2

Dist	COUNTY	ROUTE	POST MILES TOTAL PROJECT	SHEET TOTAL No. SHEETS
			02-03-19	
REGISTERED CIVIL ENGINEER			DATE	
MM/DD/YYYY				
PLANS APPROVAL DATE				
<small>THE STATE OF CALIFORNIA OR ITS OFFICERS OR AGENTS SHALL NOT BE RESPONSIBLE FOR THE ACCURACY OR COMPLETENESS OF SCANNED COPIES OF THIS PLAN SHEET.</small>				



NOTE:
For locations of "SECTION C-C" and "SECTION D-D", see "PIER LAYOUT" sheet.

LEGEND:
 Structure Excavation (Rock) (Type D)

NOTE: To reflect current detailing standards, this sheet may have been modified from its original version.

DESIGN BY: Engineer 1	CHECKED: Engineer 2	STATE OF CALIFORNIA DEPARTMENT OF TRANSPORTATION	DIVISION OF ENGINEERING SERVICES STRUCTURE DESIGN DESIGN BRANCH X	BRIDGE No. 09-0079	HAMILTON BRANCH BRIDGE (REPLACE) PIER DETAILS
DETAILS BY: Detailer 1	CHECKED: Engineer 2			POST MILE 8.98	
QUANTITIES BY: Engineer/Detailer 3	CHECKED: Engineer/Detailer 4				
<small>DATE PLOTTED -> 03-JUL-2025 THE PLOTTED -> 09:50 ORIGINAL SCALE IN INCHES FOR REDUCED PLANS</small>		UNIT: XXXX	COUNTY/ROUTE/ZONE: XXX/XXX/X	<small>DISREGARD PRINTS BEARING EARLIER REVISION DATES</small>	
<small>FILE -> h0111grn-r-plar-dra.dgn USERNAME -> s151551</small>		PROJECT NUMBER & PHASE: 02120000111	CONTRACT No.: 02-4E6404	REVISION DATES	SHEET 8 OF 10



Figure 7A.A.3 Detailing Example 3

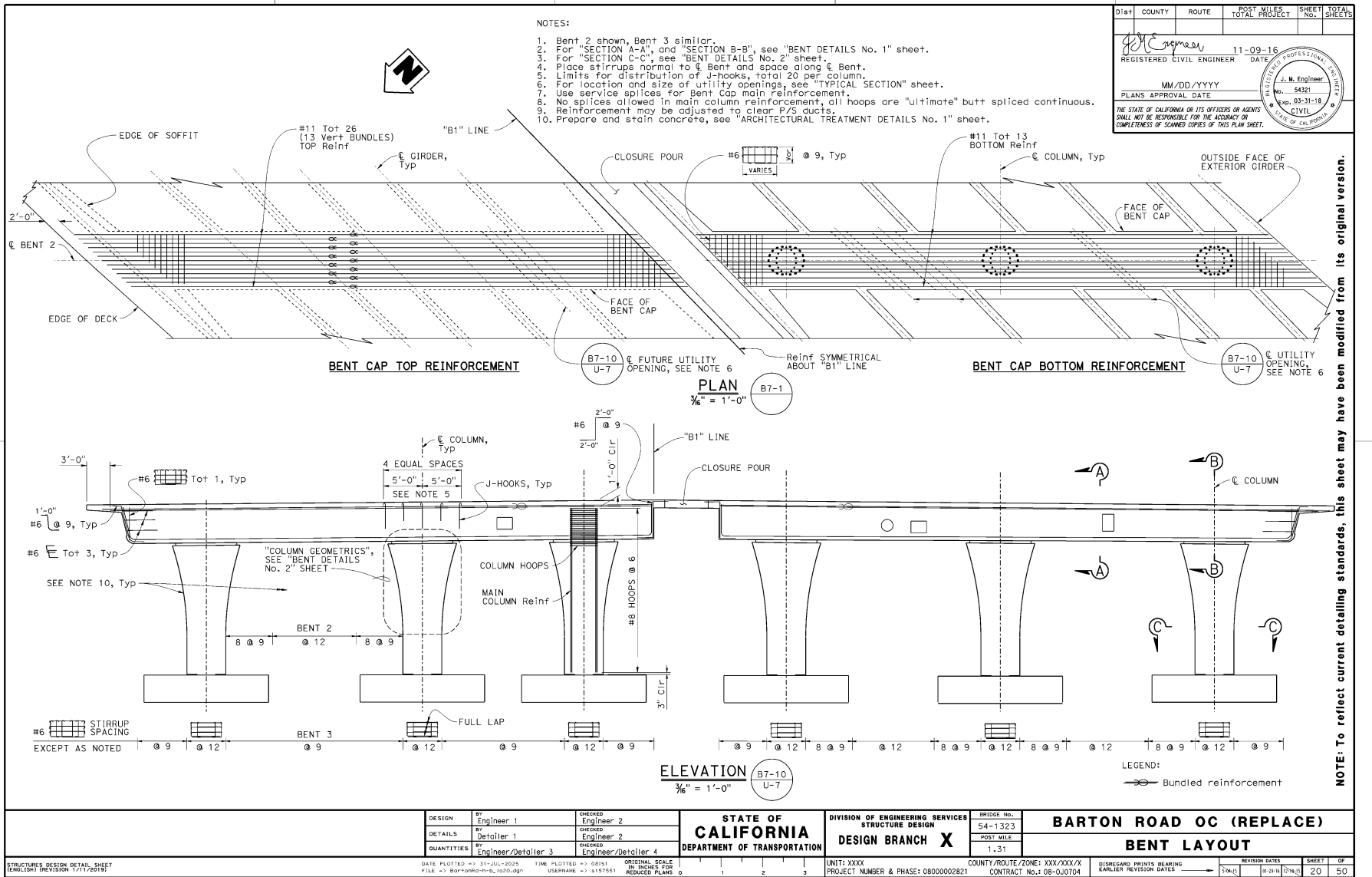
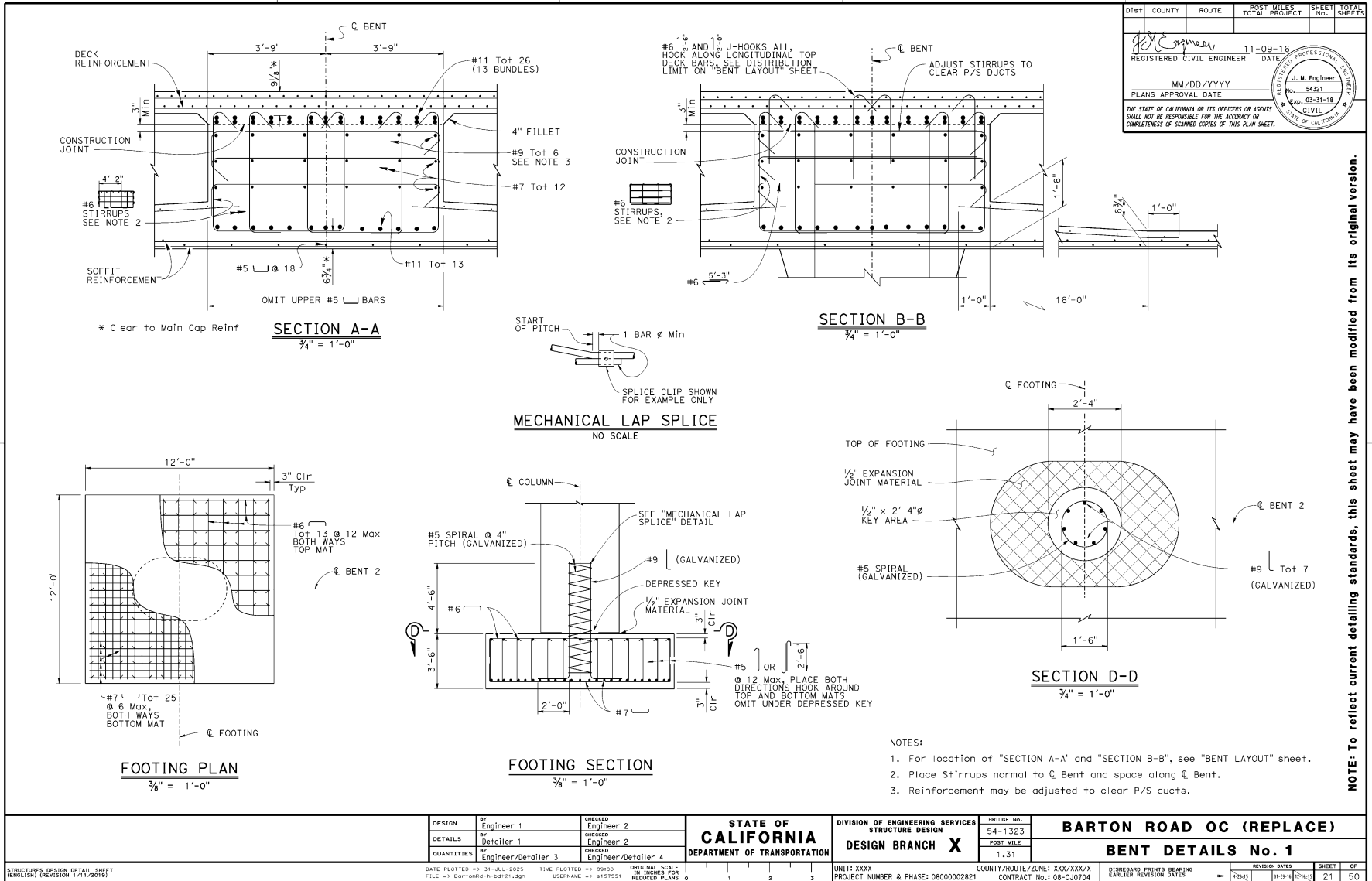


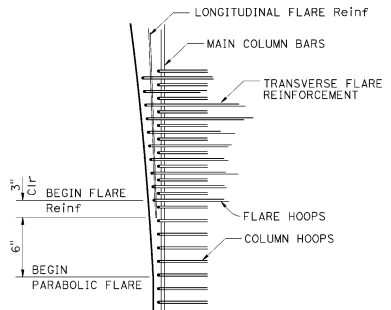
Figure 7A.A.4 Detailing Example 4



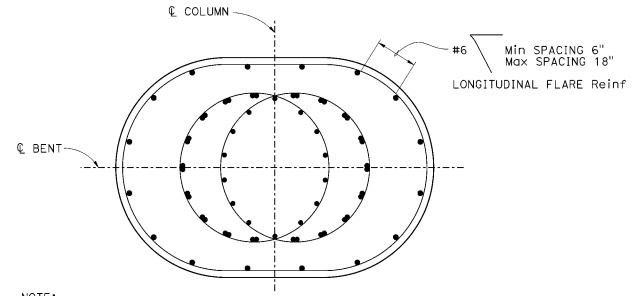
NOTE: To reflect current detailing standards, this sheet may have been modified from its original version.

Figure 7A.A.5 Detailing Example 5

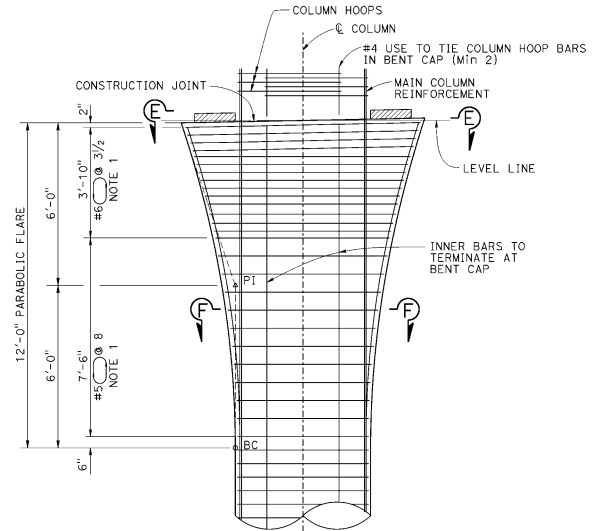
Dist	COUNTY	ROUTE	POST MILES TOTAL PROJECT	SHEET TOTAL No. SHEETS
		11-09-16		
		DATE		
		MM/DD/YYYY		
		PLANS APPROVAL DATE		
<small>THE STATE OF CALIFORNIA OR ITS OFFICERS OR AGENTS SHALL NOT BE RESPONSIBLE FOR THE ACCURACY OR COMPLETENESS OF SCANNED COPIES OF THIS PLAN SHEET.</small>				



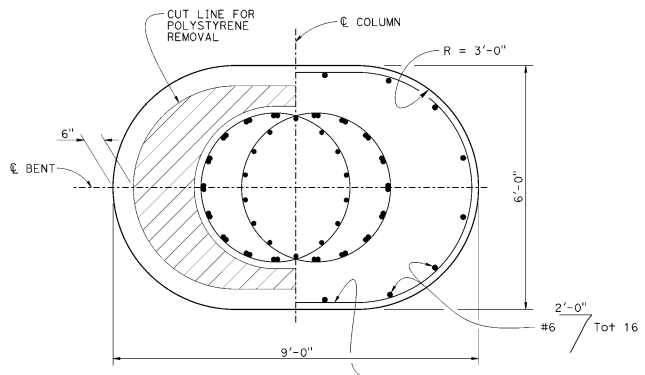
HOOP AND TIE DETAILS
NO SCALE



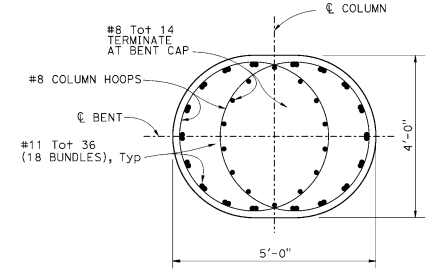
SECTION F-F
 $\frac{3}{4}'' = 1'-0''$



COLUMN GEOMETRICS
 $\frac{1}{2}'' = 1'-0''$



SECTION E-E
 $\frac{3}{4}'' = 1'-0''$



SECTION C-C
 $\frac{3}{4}'' = 1'-0''$

LEGEND:
 4" Expanded Polystyrene

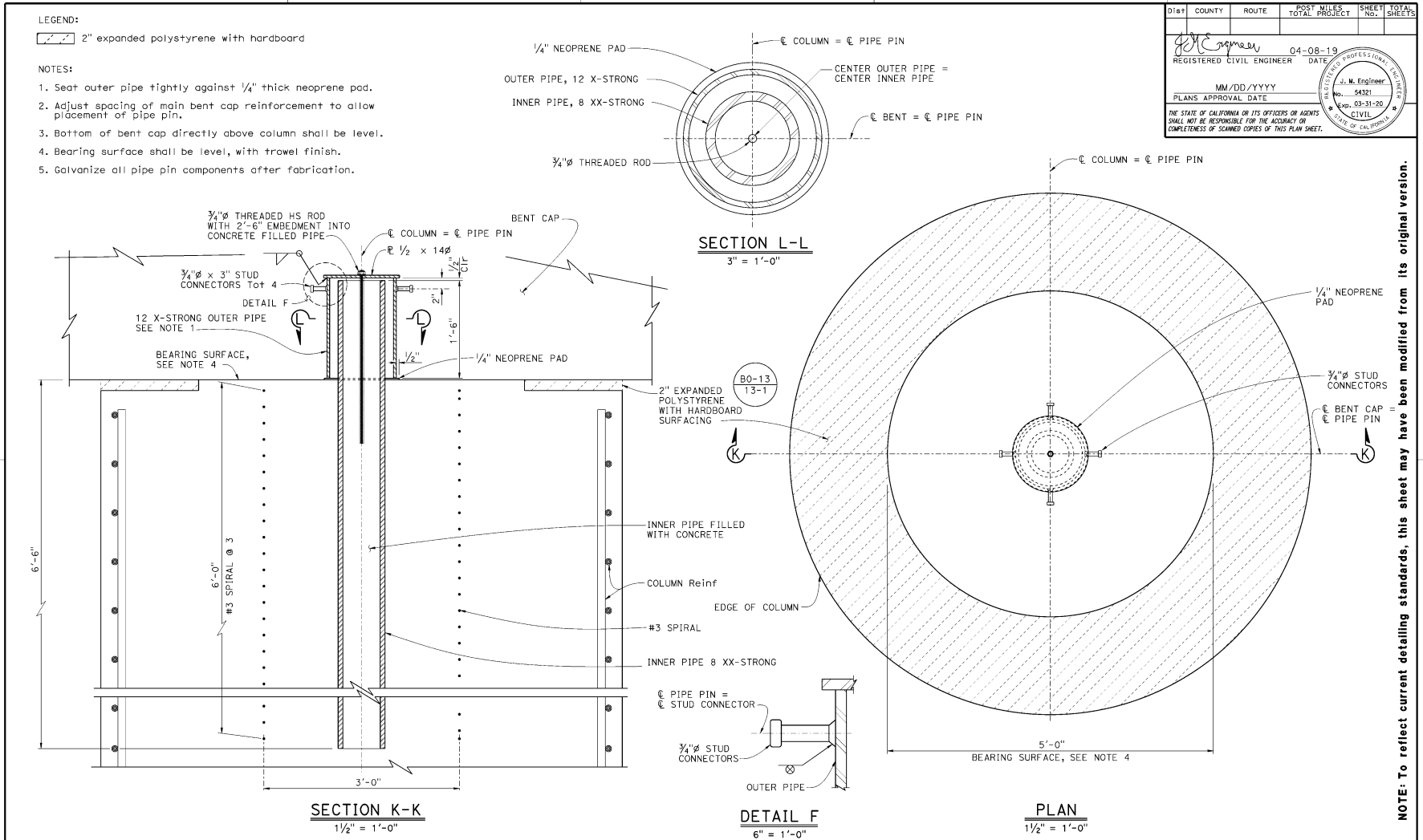
- NOTES:
- Mechanical Couplers shall be staggered.
 - For location of "SECTION C-C", see "BENT LAYOUT" sheet.

NOTE: To reflect current detailing standards, this sheet may have been modified from its original version.

DESIGN BY Engineer 1	CHECKED BY Engineer 2	STATE OF CALIFORNIA DEPARTMENT OF TRANSPORTATION	DIVISION OF ENGINEERING SERVICES STRUCTURE DESIGN DESIGN BRANCH X	BRIDGE No. 54-1323	BARTON ROAD OC (REPLACE) BENT DETAILS No. 2
DETAILS BY Detailer 1	CHECKED BY Engineer 2			POST MILE 1.31	
QUANTITIES BY Engineer/Detailer 3	CHECKED BY Engineer/Detailer 4			COUNTY/ROUTE/ZONE: XXX/XXX/X	
DATE PLOTTED: 31-JUL-2025	TIME PLOTTED: 09:26			CONTRACT No.: 08-0J0704	
FILE: \\BGT\p0r\h-34\22.dgn	USER NAME: s151551	ORIGINAL SCALE IN. INCHES FOR REDUCED PLANS 0 1 2 3	UNIT: XXXX	PROJECT NUMBER & PHASE: 08000002821	DISREGARD PRINTS BEARING EARLIER REVISION DATES
			REVISION DATES		SHEET OF
			17-3-8 12-6-15		22 50



Figure 7A.A.6 Detailing Example 6



Dist	COUNTY	ROUTE	POST MILES TOTAL PROJECT	SHEET TOTAL No. SHEETS
		04-08-19		
REGISTERED CIVIL ENGINEER		DATE		
MM/DD/YYYY				
PLANS APPROVAL DATE				
<small>THE STATE OF CALIFORNIA OR ITS OFFICERS OR AGENTS SHALL NOT BE RESPONSIBLE FOR THE ACCURACY OR COMPLETENESS OF SCANNED COPIES OF THIS PLAN SHEET.</small>				

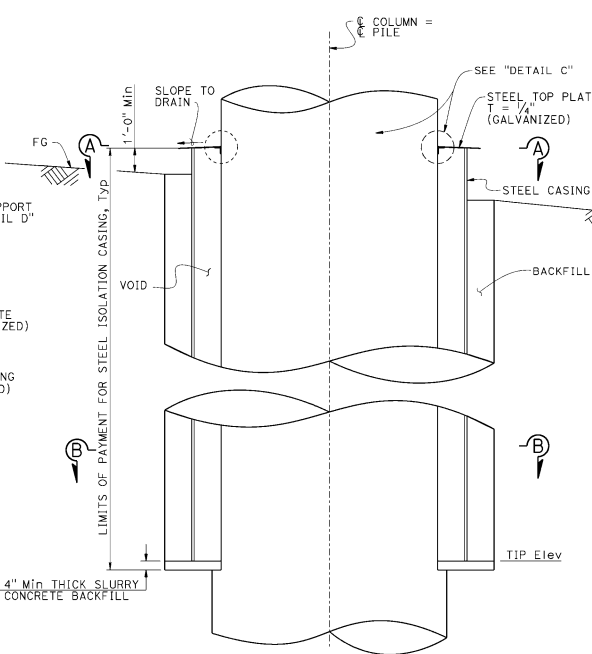
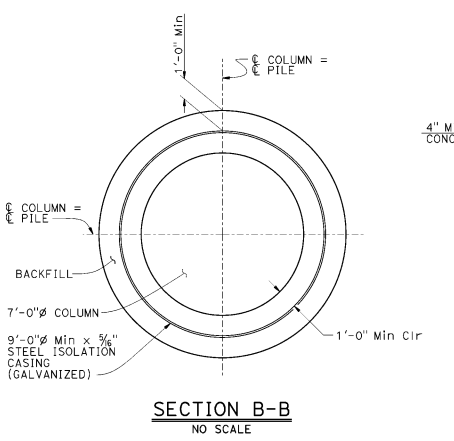
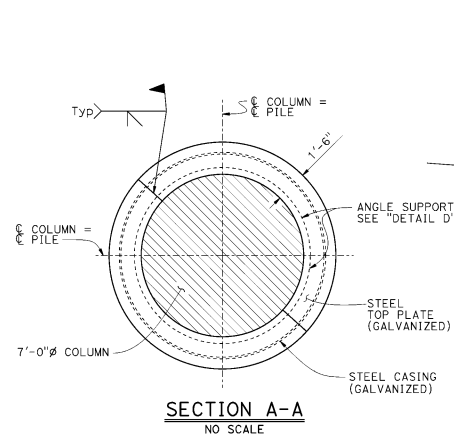
NOTE: To reflect current detailing standards, this sheet may have been modified from its original version.

DESIGN BY: Engineer 1	CHECKED BY: Engineer 2	STATE OF CALIFORNIA DEPARTMENT OF TRANSPORTATION DIVISION OF ENGINEERING SERVICES STRUCTURE DESIGN DESIGN BRANCH X	BRIDGE No. 16-0054	TIMBUCTOO BRIDGE	
DETAILS BY: Detailer 1	CHECKED BY: Engineer 2		POST MILE R18.47	BENT PIPE PIN DETAILS	
QUANTITIES BY: Engineer/Detailer 3	CHECKED BY: Engineer/Detailer 4				
DATE PLOTTED => 23-JUL-2025 TIME PLOTTED => 11:57 ORIGINAL SCALE IN INCHES FOR REDUCED PLANS 0 1 2 3		UNIT: XXXX PROJECT NUMBER & PHASE: 03130000201	COUNTY/ROUTE/ZONE: XXX/XXX/X	CONTRACT No.: 03-3F5104	DISREGARD PRINTS BEARING EARLIER REVISION DATES
STRUCTURES DESIGN DETAIL SHEET (ENGLISH) (REVISION 1/11/2019)			REVISION DATES	SHEET 10	OF 19



Figure 7A.A.7 Detailing Example 7

Dist	COUNTY	ROUTE	POST MILES TOTAL PROJECT	SHEET TOTAL No. SHEETS
		04-08-19 REGISTERED CIVIL ENGINEER DATE MM/DD/YYYY PLANS APPROVAL DATE		
<small>THE STATE OF CALIFORNIA OR ITS OFFICERS OR AGENTS SHALL NOT BE RESPONSIBLE FOR THE ACCURACY OR COMPLETENESS OF SCANNED COPIES OF THIS PLAN SHEET.</small>				

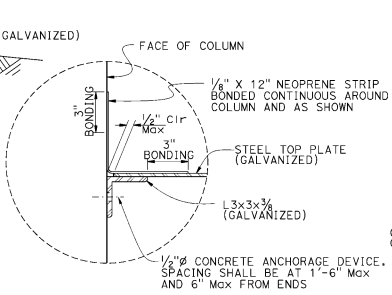


STEEL ISOLATION CASING DETAIL
NO SCALE

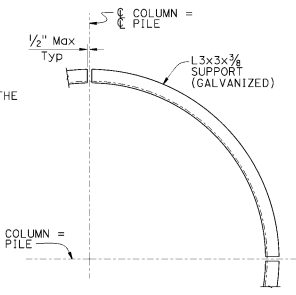
STEEL ISOLATION CASING TABLE

LOCATION	TIP ELEVATION	LENGTH (ft)
BENT 3 LEFT COLUMN	377.0	12'
BENT 3 RIGHT COLUMN	376.0	12'

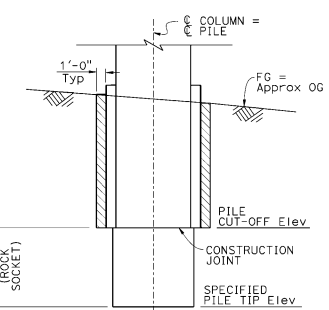
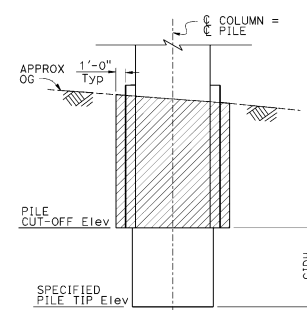
NOTE:
Column orientation "LEFT" and "RIGHT" by looking up station from BB.



DETAIL C
3" = 1'-0"



DETAIL D
1" = 1'-0"



EXCAVATION

BACKFILL

Structure Excavation (Rock)
 Structure Backfill (Bridge)

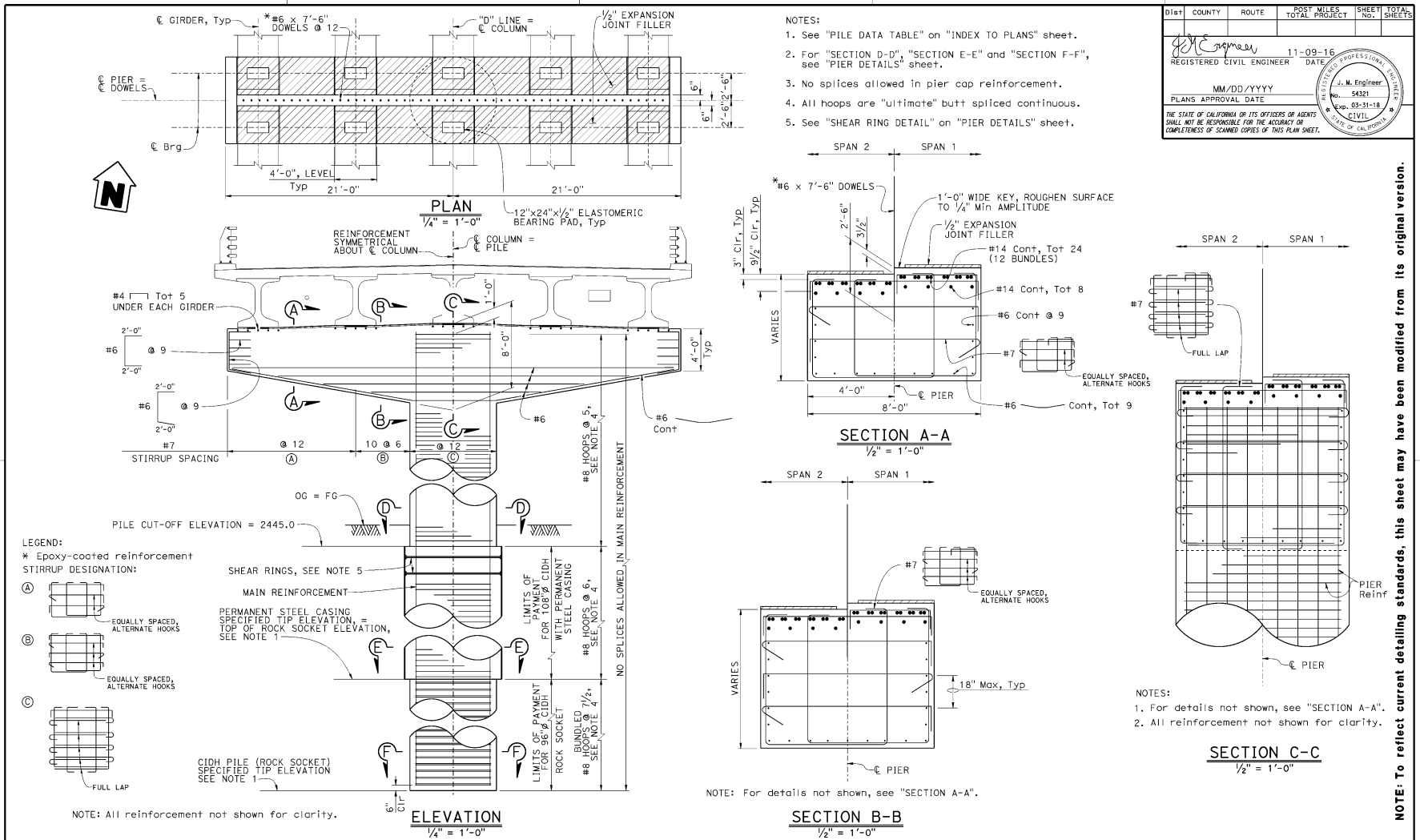
LIMITS OF EXCAVATION (ROCK) AND BACKFILL
NO SCALE

NOTES:
1. Limits of Excavation and Backfill at columns with isolation steel casing shown. For limits of Excavation (Rock) and Backfill at other column locations, see "BENT LAYOUT" sheet.
2. For CIDH pile cut-off and specified pile tip elevations, see "INDEX TO PLANS" sheet.

NOTE: To reflect current detailing standards, this sheet may have been modified from its original version.

STRUCTURES DESIGN DETAIL SHEET (ENGLESH) (REVISION 1/17/2019)	DESIGN BY: Engineer 1	CHECKED: Engineer 2	STATE OF CALIFORNIA DEPARTMENT OF TRANSPORTATION	DIVISION OF ENGINEERING SERVICES STRUCTURE DESIGN	BRIDGE No. 16-0054	TIMBUCTOO BRIDGE ISOLATION CASING DETAILS	
	DETAILS BY: Detailer 1	CHECKED: Engineer 2		DESIGN BRANCH X	POST MILE R16.47		
	QUANTITIES BY: Engineer/Detailer 3	CHECKED: Engineer/Detailer 4			COUNTY/ROUTE/ZONE: XXX/XXX/X	REVISION DATES	
					CONTRACT No.: 03-3F5104	12/21/11 12/28/11 1/15/19	SHEET 16 OF 19

Figure 7A.A.8 Detailing Example 8

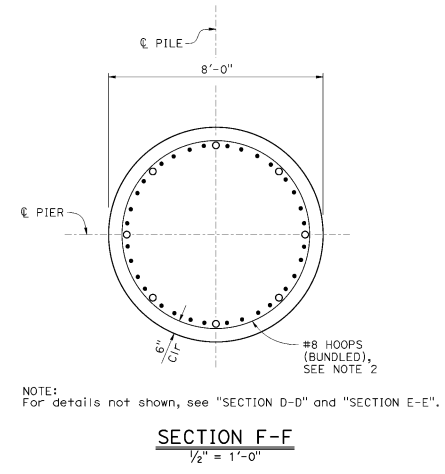
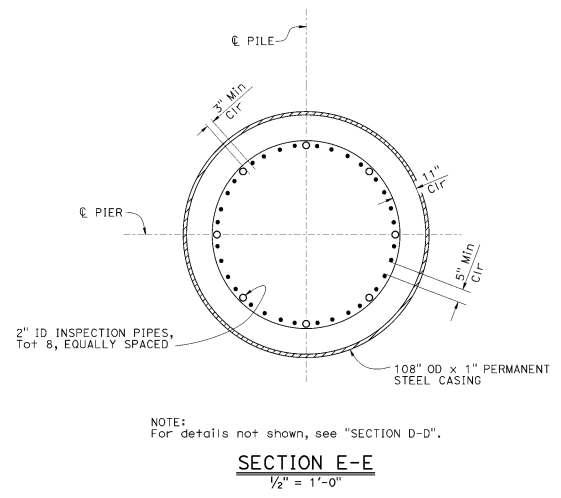
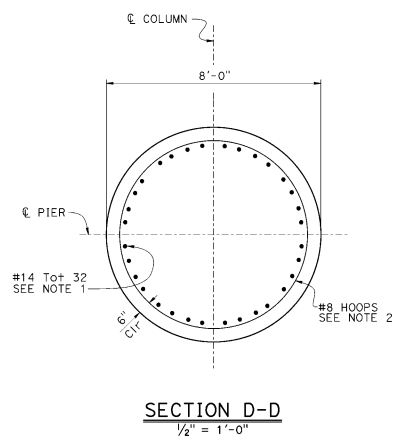
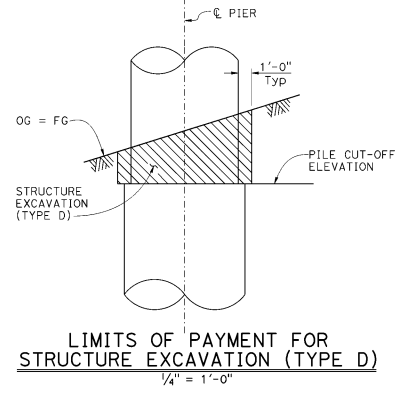
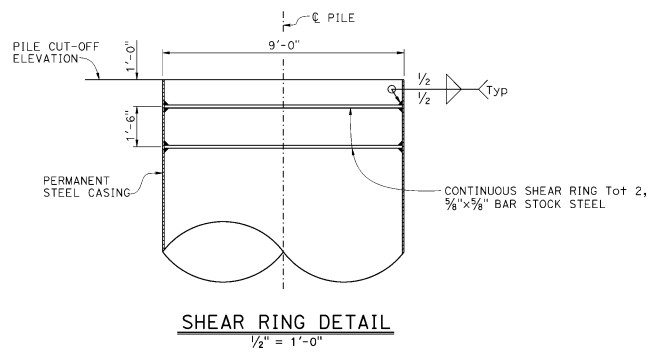


Dist	COUNTY	ROUTE	POST MILES	SHEET TOTAL
			TOTAL PROJECT	No. SHEETS
		11-09-16		
REGISTERED CIVIL ENGINEER		DATE		
MM/DD/YYYY				
PLANS APPROVAL DATE				
<small>THE STATE OF CALIFORNIA OR ITS OFFICERS OR AGENTS SHALL NOT BE RESPONSIBLE FOR THE ACCURACY OR COMPLETENESS OF SCANNED COPIES OF THIS PLAN SHEET.</small>				

NOTE: To reflect current detailing standards, this sheet may have been modified from its original version.

DESIGN	BY Engineer 1	CHECKED Engineer 2	BRIDGE No. 05-0095	SWIFT CREEK BRIDGE (REPLACE) PIER LAYOUT
DETAILS	BY Detailer 1	CHECKED Engineer 2	POST MILE 60.03	
QUANTITIES	BY Engineer/Detailer 3	CHECKED Engineer/Detailer 4	60.03	
STATE OF CALIFORNIA DEPARTMENT OF TRANSPORTATION			DIVISION OF ENGINEERING SERVICES STRUCTURE DESIGN DESIGN BRANCH X	PROJECT NUMBER & PHASE: 0212000731 COUNTY/ROUTE/ZONE: XXX/XXX/X CONTRACT No.: 02-4F2204
<small>STRUCTURES DESIGN DETAIL SHEET (ENGLISH) (REVISION 5/6/2016)</small>				<small>DISREGARD PRINTS BEARING EARLIER REVISION DATES</small>
<small>DATE PLOTTED --> 04-AUG-2025 THE PLOTTED --> 07:24 ORIGINAL SCALE IN INCHES FOR REDUCED PLANS 0</small>				<small>REVISION DATES</small>
<small>FILE --> 05-0095-1-001-1001.dgn USERNAME --> 6157551</small>				<small>10-11-18 10:26:19</small>
				<small>SHEET OF 23</small>

Figure 7A.A.9 Detailing Example 9



- NOTES:**
1. No splices allowed in main pier reinforcement.
 2. All hoops are "ultimate" butt spliced continuous.
 3. For location of "SECTION D-D", "SECTION E-E" and "SECTION F-F", see "PIER LAYOUT" sheet.

LEGEND:
 Limits of Structure Excavation (Type D)

Dist	COUNTY	ROUTE	POST MILES TOTAL PROJECT	SHEET TOTAL SHEETS
REGISTERED CIVIL ENGINEER			11-09-16	DATE
MM/DD/YYYY			54321	No.
PLANS APPROVAL DATE			03-31-18	DATE
THE STATE OF CALIFORNIA OR ITS OFFICERS OR AGENTS SHALL NOT BE RESPONSIBLE FOR THE ACCURACY OR COMPLETENESS OF SCANNED COPIES OF THIS PLAN SHEET.				

NOTE: To reflect current detailing standards, this sheet may have been modified from its original version.

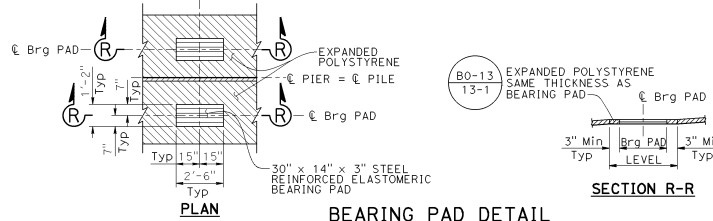
DESIGN BY: Engineer 1	CHECKED BY: Engineer 2	STATE OF CALIFORNIA DEPARTMENT OF TRANSPORTATION	BRIDGE No. 05-0095	SWIFT CREEK BRIDGE (REPLACE) PIER DETAILS
DETAILS BY: Detailer 1	CHECKED BY: Engineer 2		POST MILE 60.03	
QUANTITIES BY: Engineer/Detailer 3	CHECKED BY: Engineer/Detailer 4			
DATE PLOTTED: 31-JUL-2015	TIME PLOTTED: 13:53	ORIGINAL SCALE: 1/4" = 1'-0"	UNIT: XXXX	COUNTY/ROUTE/ZONE: XXX/XXX/X
PROJECT NUMBER & PHASE: 02120000731		CONTRACT NO.: 02-4F2204		DISREGARD PRINTS BEARING EARLIER REVISION DATES
			REVISION DATA	SHEET 11 OF 23



Figure 7A.A.10 Detailing Example 10

NOTES:

1. For "SECTION D-D" and "SECTION E-E", see "PIER DETAILS No. 1" sheet.
2. For "PIER CAP END DETAIL (PIERS 1, 3, 6, & 10)", see "PIER DETAILS No. 5" sheet.
3. For "DETAIL D", see "AESTHETIC DETAILS" sheet.
4. All reinforcement on this sheet shall be epoxy-coated.
5. All reinforcement on this sheet shall be Grade 80.
6. For pier diaphragm details, see "DIAPHRAGM DETAILS No. 2 - FOR PIERS 3 AND 6" sheet.



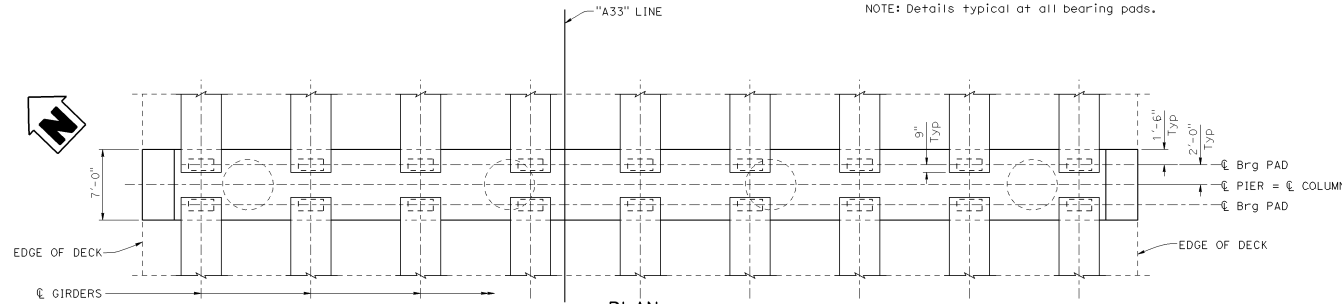
BEARING PAD DETAIL
NO SCALE
NOTE: Details typical at all bearing pads.

Dist	COUNTY	ROUTE	POST MILES TOTAL PROJECT	SHEET No.	TOTAL SHEETS
				09-09-26	
REGISTERED CIVIL ENGINEER			DATE	PROFESSIONAL SEAL	
11-30-26			PLANS APPROVAL DATE	J. M. Engineer No. 54321 CIVIL Exp. 03-31-27 STATE OF CALIFORNIA	
THE STATE OF CALIFORNIA OR ITS OFFICERS OR AGENTS SHALL NOT BE RESPONSIBLE FOR THE ACCURACY OR COMPLETENESS OF SCANNED COPIES OF THIS PLAN SHEET.					

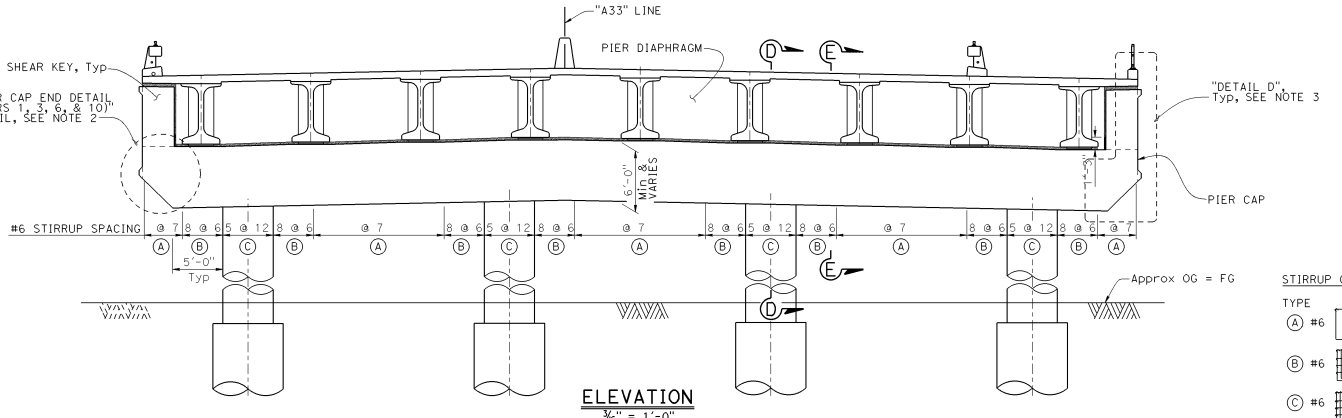
LEGEND:

Expanded Polystyrene with hard board surfacing

BO-13 13-1



PLAN
3/8" = 1'-0"



ELEVATION
3/8" = 1'-0"

STIRRUP CONFIGURATION:

TYPE

(A) #6

(B) #6

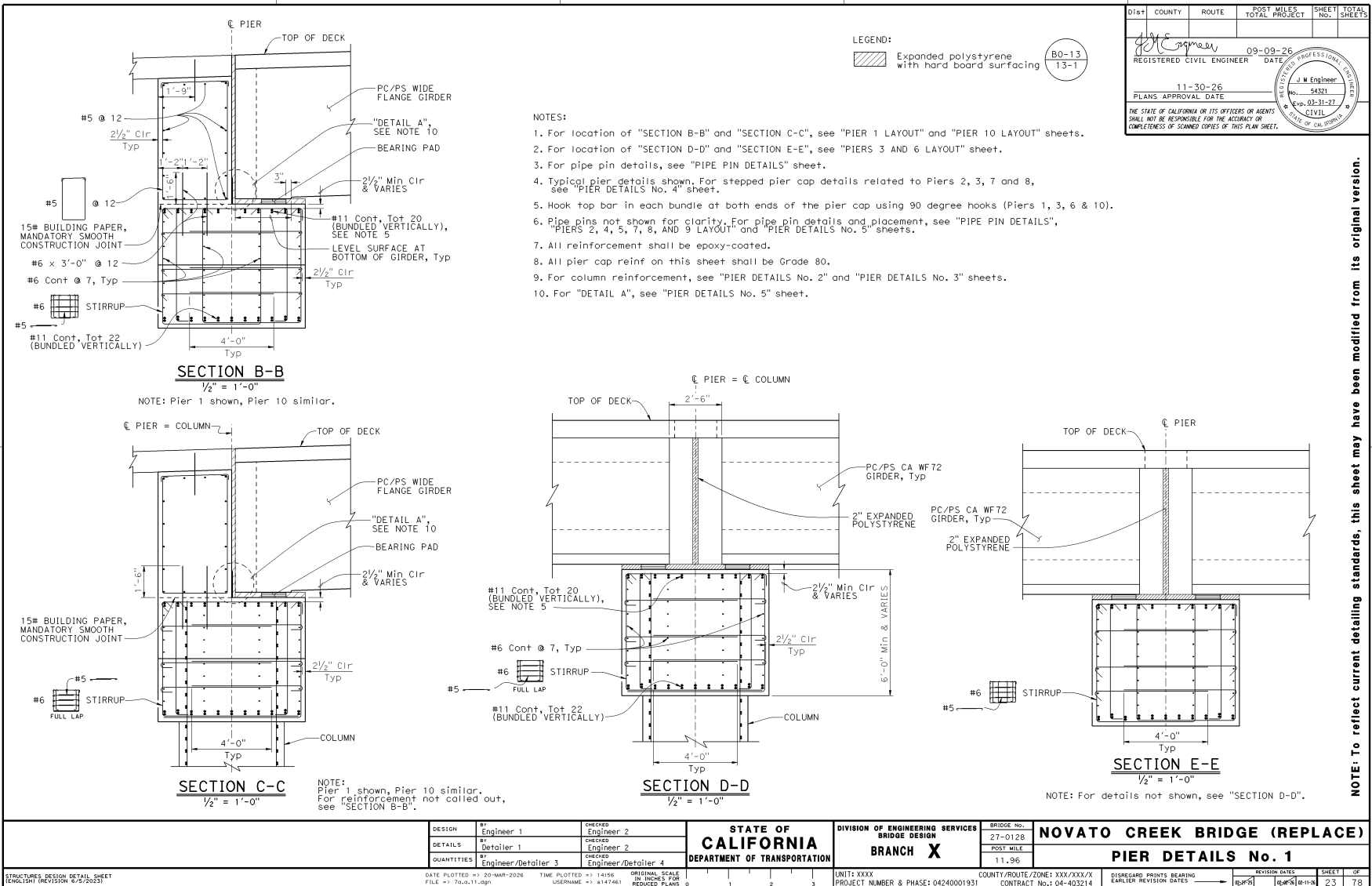
(C) #6

NOTE: To reflect current detailing standards, this sheet may have been modified from its original version.

DESIGN BY: Engineer 1	CHECKED BY: Engineer 2	STATE OF CALIFORNIA DEPARTMENT OF TRANSPORTATION	DIVISION OF ENGINEERING SERVICES BRIDGE DESIGN BRANCH X	BRIDGE No.:	NOVATO CREEK BRIDGE (REPLACE)
DETAILS BY: Detailer 1	CHECKED BY: Engineer 2			27-0128	
QUANTITIES BY: Engineer/Detailer 3	CHECKED BY: Engineer/Detailer 4			POST MILE:	11.96
STRUCTURES DESIGN DETAIL SHEET (ENGLISH) (REVISION 6/2/2023)	DATE PLOTTED => 20-MAR-2026 FILE => 70a-10.dgn	TIME PLOTTED => 14:55 USERNAME => s1417461	ORIGINAL SCALE AS SHOWN FOR REDUCED PLANS 0	UNIT: XXXX PROJECT NUMBER & PHASE: 04240001931	COUNTY/ROUTE/ZONE: XXX/XXX/X CONTRACT No.: 04-40321.4
			DISREGARD PRINTS BEARING EARLIER REVISION DATES	REVISION DATE	SHEET 21 OF 78



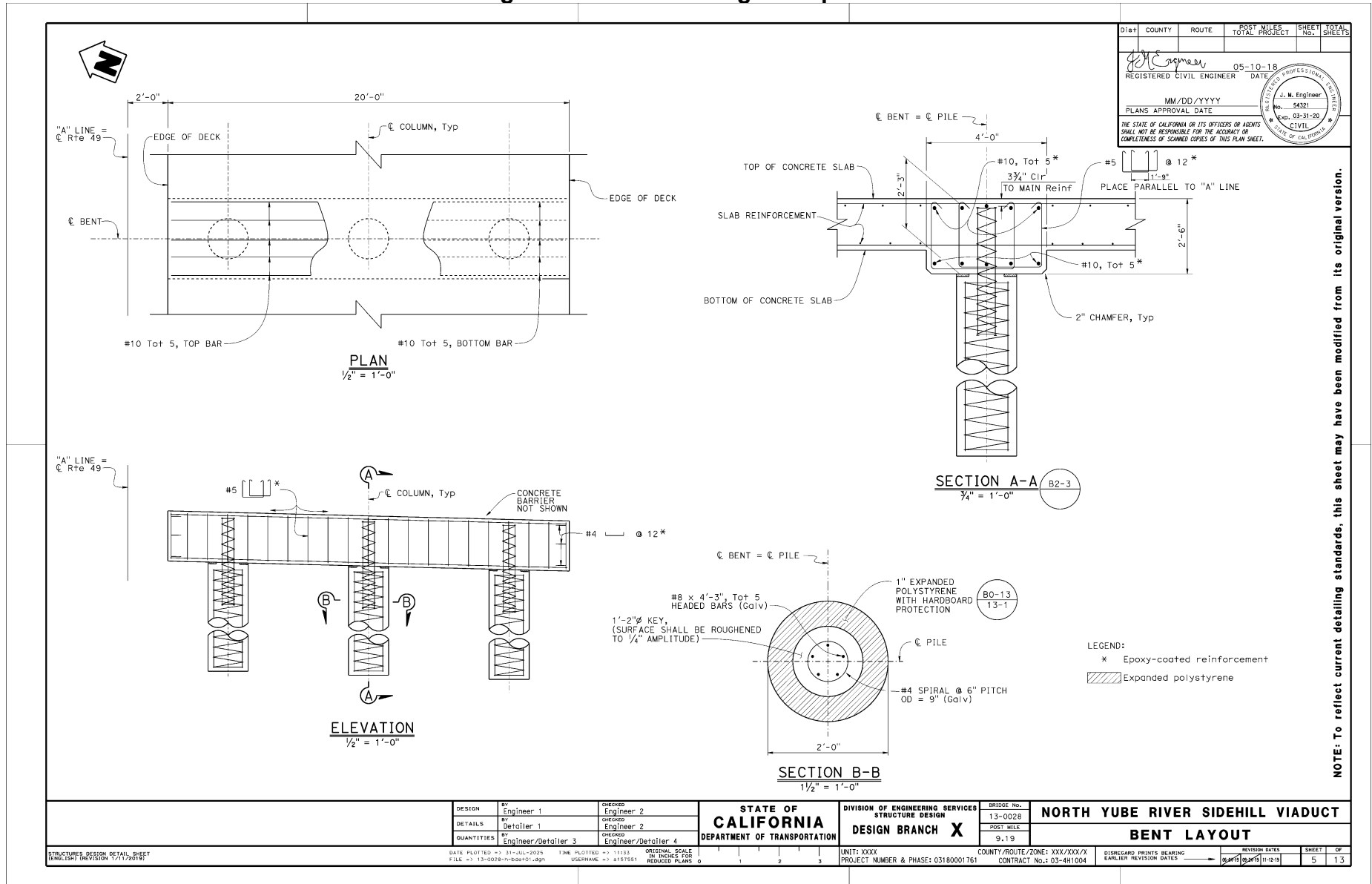
Figure 7A.A.11 Detailing Example 11



NOTE: To reflect current detailing standards, this sheet may have been modified from its original version.



Figure 7A.A.12 Detailing Example 12



Dist	COUNTY	ROUTE	POST MILES TOTAL PROJECT	SHEET No.	TOTAL SHEETS
REGISTERED CIVIL ENGINEER			05-10-18	DATE	
MM/DD/YYYY			DATE		
PLANS APPROVAL DATE			DATE		
No. 54321			Exp. 03-31-20		
CIVIL			STATE OF CALIFORNIA		

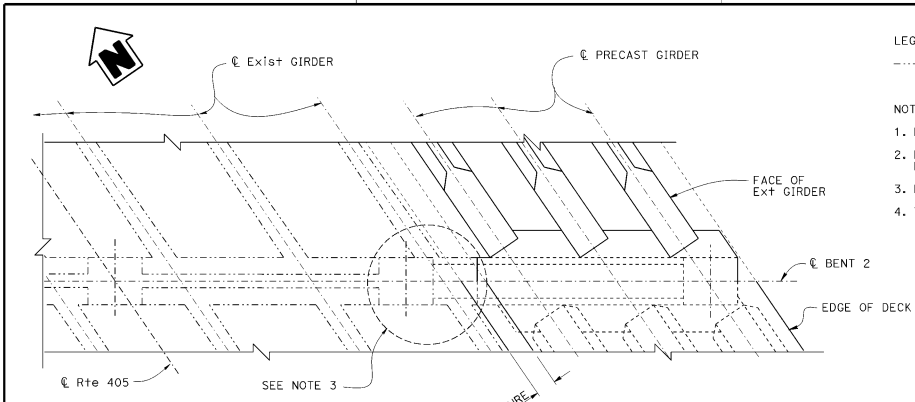
NOTE: To reflect current detailing standards, this sheet may have been modified from its original version.

LEGEND:
 * Epoxy-coated reinforcement
 Expanded polystyrene

DESIGN BY: Engineer 1	CHECKED: Engineer 2	STATE OF CALIFORNIA	DIVISION OF ENGINEERING SERVICES	BRIDGE No. 13-0028	NORTH YUBE RIVER SIDEHILL VIADUCT
DETAILS BY: Detailer 1	CHECKED: Engineer 2	DEPARTMENT OF TRANSPORTATION	STRUCTURE DESIGN	POST MILE 9.19	
QUANTITIES BY: Engineer/Detailer 3	CHECKED: Engineer/Detailer 4	DESIGN BRANCH X			
DATE PLOTTED -> 31-JUL-2025		TIME PLOTTED -> 11:33	ORIGINAL SCALE IN INCHES FOR REDUCED PLANS	UNIT: XXXX	COUNTY/ROUTE/ZONE: XXX/XXX/X
FILE -> 13-0028-11-00015-000		USER NAME -> 8151551		PROJECT NUMBER & PHASE: 03180001761	CONTRACT NO.: 03-4H1004
				DISREGARD PRINTS BEARING EARLIER REVISION DATES	REVISION DATES: 03/24/11 01-2-11
					SHEET 5 OF 13



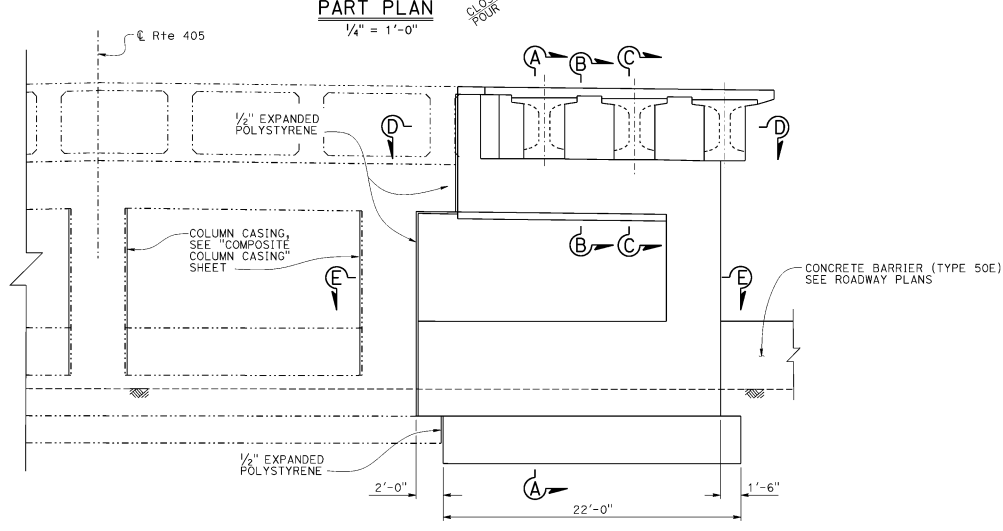
Figure 7A.A.13 Detailing Example 13



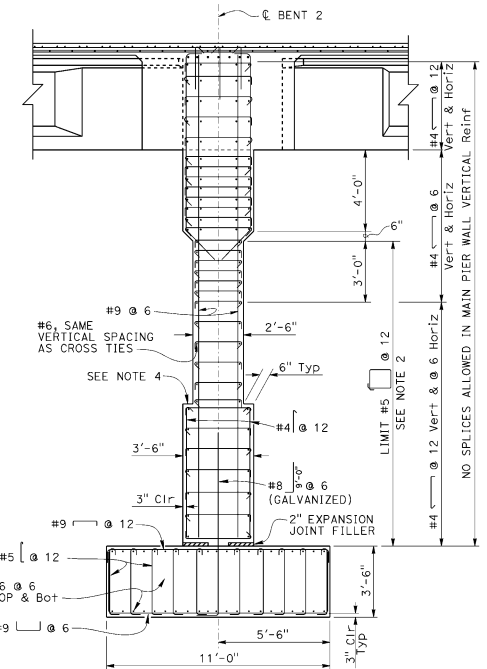
LEGEND:
 - - - - - Existing structure

- NOTES:
1. For "SECTION B-B" and "SECTION C-C", see "BENT DETAILS No. 1" sheet.
 2. For pier wall end element reinforcement, see "SECTION E-E" on "BENT DETAILS No. 2" sheet.
 3. For "BENT CAP SAW CUT DETAIL", see "CONCRETE REMOVAL LIMITS" sheet.
 4. Top to match existing and new barriers.

Dist	COUNTY	ROUTE	POST MILES TOTAL PROJECT	SHEET No.	TOTAL SHEETS
				14	27
REGISTERED CIVIL ENGINEER DATE 06-28-12 MM/DD/YYYY			REGISTERED PROFESSIONAL ENGINEER No. 54321 Exp. 03-31-14 CIVIL STATE OF CALIFORNIA		
PLANS APPROVAL DATE THE STATE OF CALIFORNIA OR ITS OFFICERS OR AGENTS SHALL NOT BE RESPONSIBLE FOR THE ACCURACY OR COMPLETENESS OF SCANNED COPIES OF THIS PLAN SHEET.					



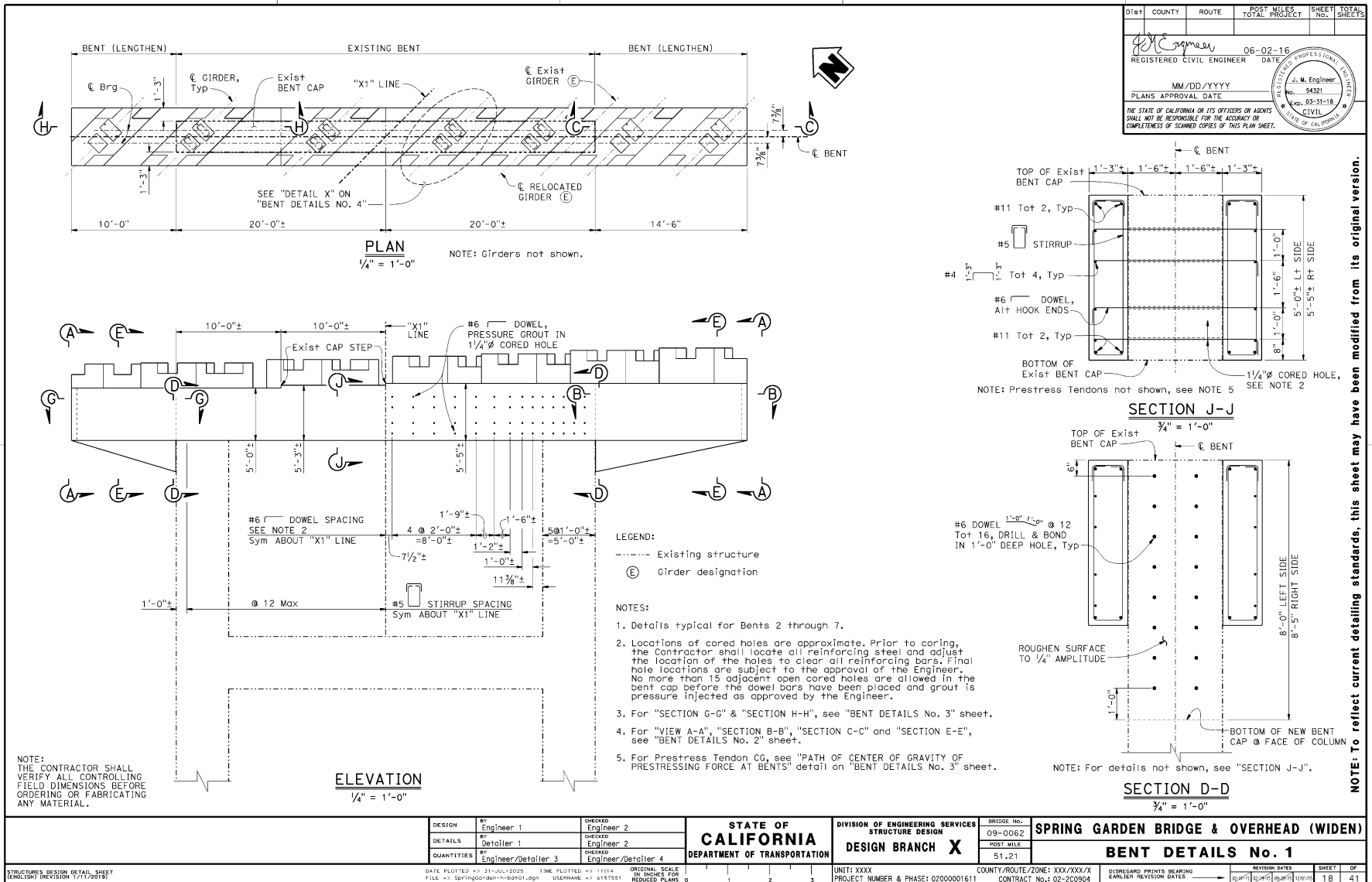
NOTE:
 THE CONTRACTOR SHALL VERIFY ALL CONTROLLING FIELD DIMENSIONS BEFORE ORDERING OR FABRICATING ANY MATERIAL.



NOTE: To reflect current detailing standards, this sheet may have been modified from its original version.

DESIGN BY: Engineer 1	CHECKED BY: Engineer 2	STATE OF CALIFORNIA DEPARTMENT OF TRANSPORTATION	BRIDGE No. 53-1198	TEMPLE AVENUE OC (MODIFY)	
DETAILS BY: Detailer 1	CHECKED BY: Engineer 2		DESIGN BRANCH X	BENT LAYOUT	
QUANTITIES BY: Engineer/Detailer 3	CHECKED BY: Engineer/Detailer 4		PROJECT NUMBER & PHASE: 07000005391	COUNTY/ROUTE/ZONE: XXX/XXX/X	DISREGARD PRINTS BEARING EARLIER REVISION DATES
DATE PLOTTED: 23-JUL-2025 FILE: \\td016-r1-d01_10.dgn		ORIGINAL SCALE: 1/4" = 1'-0" IN. INCHES FOR REDUCED PLANS: 0 1 2 3	UNIT: XXXX CONTRACT No.: 07-278304	SHEET 14 OF 27	

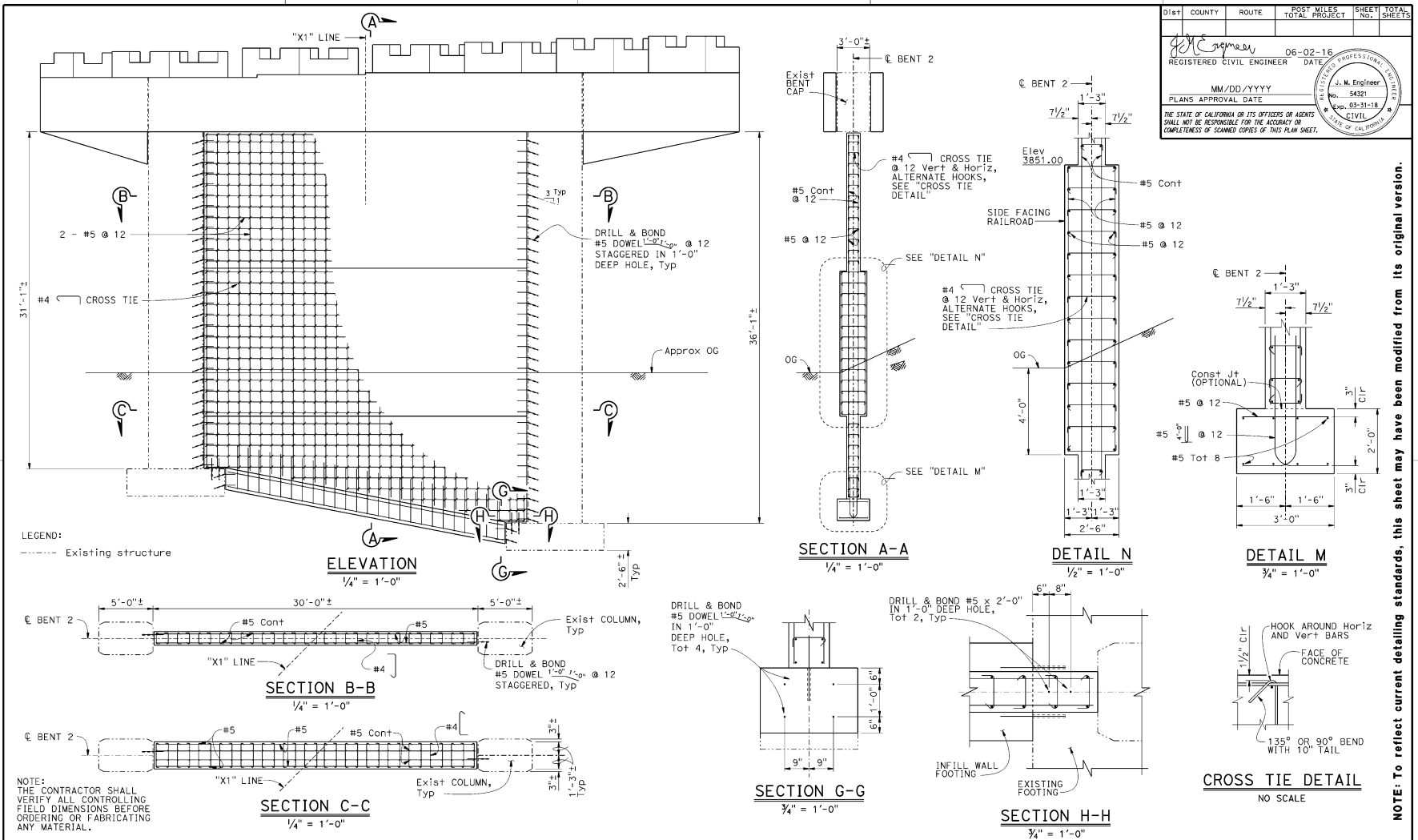
Figure 7A.A.14 Detailing Example 14



Dist	COUNTY	ROUTE	POST MILES TOTAL PROJECT	SHEET TOTAL SHEETS
J. M. Engineer REGISTERED CIVIL ENGINEER No. 54321 Exp. 03-31-18 CIVIL STATE OF CALIFORNIA		06-02-16 DATE MM/DD/YYYY PLANS APPROVAL DATE		
THE STATE OF CALIFORNIA OR ITS OFFICERS OR AGENTS SHALL NOT BE RESPONSIBLE FOR THE ACCURACY OR COMPLETENESS OF SCANNED COPIES OF THIS PLAN SHEET.				

DESIGN BY Engineer 1	CHECKED BY Engineer 2	STATE OF CALIFORNIA DEPARTMENT OF TRANSPORTATION	BRIDGE No. 09-0062	SPRING GARDEN BRIDGE & OVERHEAD (WIDEN) BENT DETAILS No. 1	
DETAILS BY Detailer 1	CHECKED BY Engineer 2		POST MILE 51.21		
QUANTITIES BY Engineer/Detailer 3	CHECKED BY Engineer/Detailer 4		UNIT: XXXX		COUNTY/ROUTE/ZONE: XXX/XXX/X
DATE PLOTTED -> 31-JUL-2025	THE PLOTTED -> 11:14		ORIGINAL SCALE IN. INCHES FOR REDUCED PLANS		PROJECT NUMBER & PHASE: 02000001611
DISCREPANCY PRINTS BEARING EARLIER REVISION DATES			CONTRACT No.: 02-2C0904	REVISION DATES 18 41	

Figure 7A.A.15 Detailing Example 15

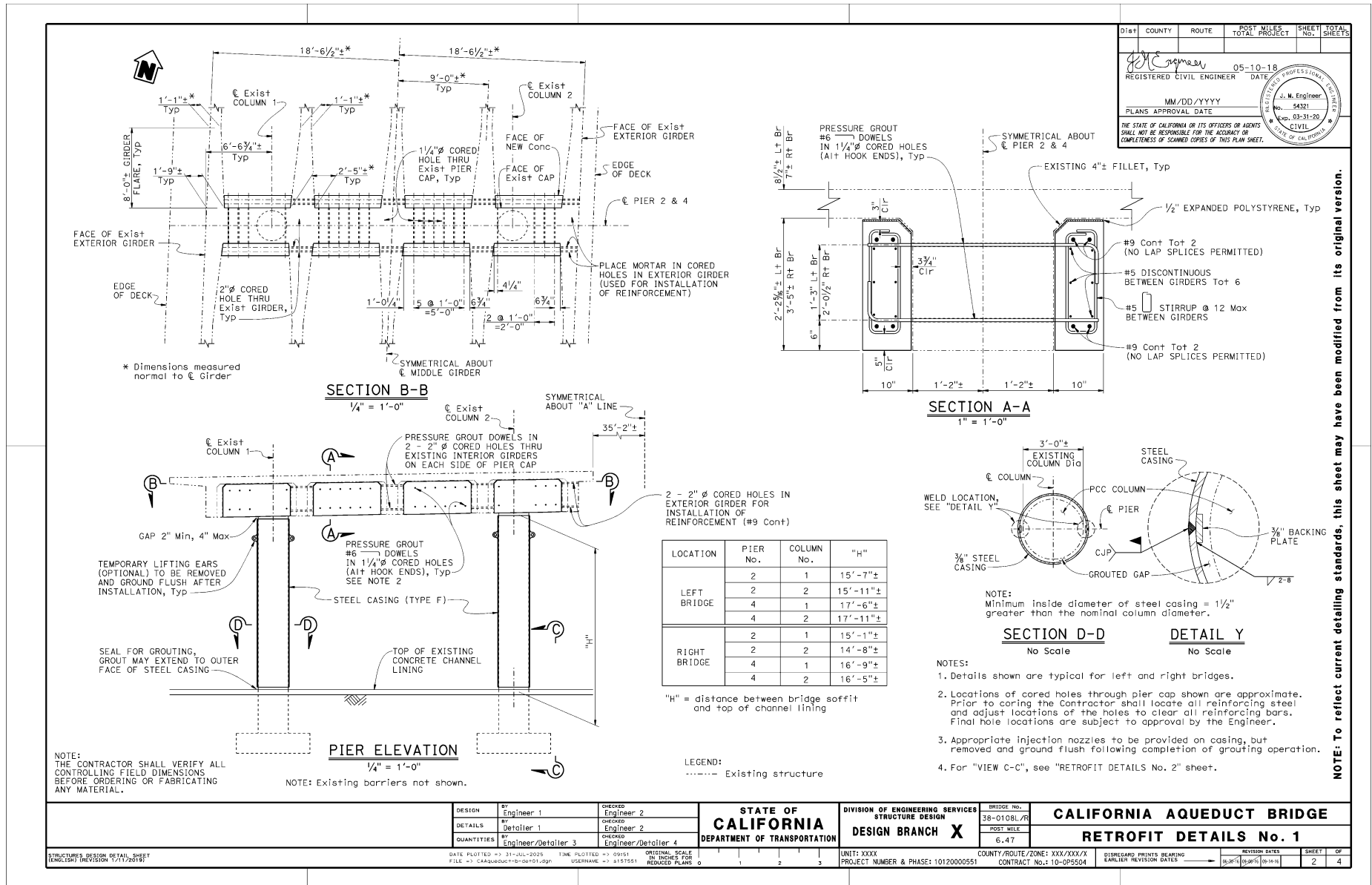


Dist	COUNTY	ROUTE	POST MILES TOTAL PROJECT	SHEET TOTAL No. SHEETS
		DATE	06-02-16	
REGISTERED CIVIL ENGINEER MM/DD/YYYY PLANS APPROVAL DATE				
THE STATE OF CALIFORNIA OR ITS OFFICERS OR AGENTS SHALL NOT BE RESPONSIBLE FOR THE ACCURACY OR COMPLETENESS OF SCANNED COPIES OF THIS PLAN SHEET.				

NOTE: To reflect current detailing standards, this sheet may have been modified from its original version.

DESIGN	BY: Engineer 1	CHECKED: Engineer 2	BRIDGE No. 09-0062	PROJECT NUMBER & PHASE: 02000001611	COUNTY/ROUTE/ZONE: XXX/XXX/X	CONTRACT No.: 02-C0904	DISREGARD PRINTS BEARING EARLIER REVISION DATES	
DETAILS	BY: Detailer 1	CHECKED: Engineer 2	POST MILE 51.2	UNIT: XXXX				
QUANTITIES	BY: Engineer/Detailer 3	CHECKED: Engineer/Detailer 4		PROJECT NUMBER & PHASE: 02000001611	COUNTY/ROUTE/ZONE: XXX/XXX/X	CONTRACT No.: 02-C0904		
DATE PLOTTED => 31-JUL-2005 THE PLOTTED => 11:00 ORIGINAL SCALE IN INCHES FOR REDUCED PLANS 0								
STATE OF CALIFORNIA DEPARTMENT OF TRANSPORTATION DIVISION OF ENGINEERING SERVICES STRUCTURE DESIGN DESIGN BRANCH X							SPRING GARDEN BRIDGE & OVERHEAD (WIDEN) INFILL WALL BENT 2	
STRUCTURES DESIGN DETAIL SHEET (ENGLISH) (REVISION 7/11/2019)							REVISION DATES SHEET OF 15 41	

Figure 7A.A.16 Detailing Example 16



NOTE: To reflect current detailing standards, this sheet may have been modified from its original version.