

Bridge Design Details 7.10 March 2026

Bent Cap Stirrup Reinforcement (Vertical Exterior Girders)

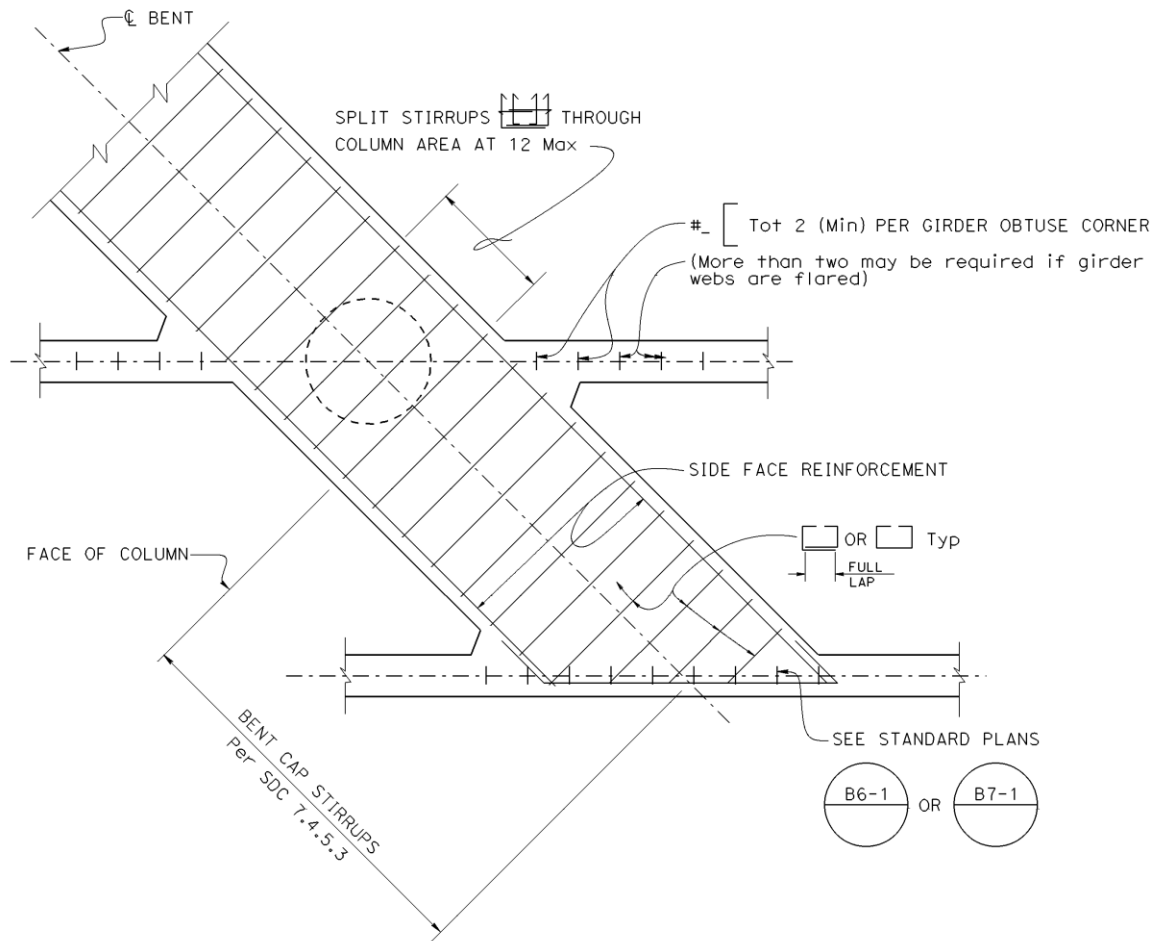


Figure 7.10.1 Stirrup Reinforcement at Skewed Bent Caps (Greater than 20° Skew)

Notes:

1. On sharply skewed structures, a PART PLAN is provided as shown here, to assure adequate reinforcement is provided at bent cap and hinge ends.
2. For skews 0° to 20°, place bent cap and diaphragm stirrups parallel to girders; for skews over 20°, place bent cap and diaphragm stirrups normal to ϕ Bent but may be placed parallel to girders if required for utility openings. Careful consideration should be given to the size and placement of utility openings on sharply skewed structures.