

Installing Caltrans' RUSLE2

1. INSTRUCTIONS FOR INSTALLING RUSLE2 from Webpage: Locate the downloadable files on the Caltrans' Stormwater Design webpage. The complete RUSLE2 program and databases are in a single zip file.

Do not attempt to run RUSLE2 from the webpage.

Download the zip file to your hard drive. For best results, left click and "Save Target as" to your Desktop. A file called "Rusle2.zip" should appear.

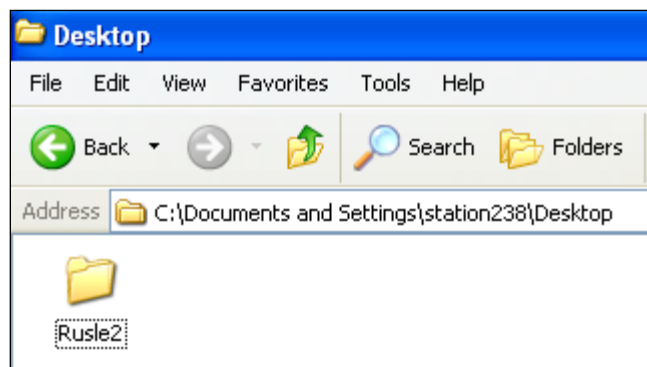
To "unzip" use this method. Double click on the Rusle2.zip icon and go to the menu bar of the new window. From the "Actions" menu item, select "Extract" to open another window that prompts a destination. Input a destination on your hard drive where your applications are saved such as the C-Drive for most Caltrans machines. Click the "Extract" button the begin unzipping the files.

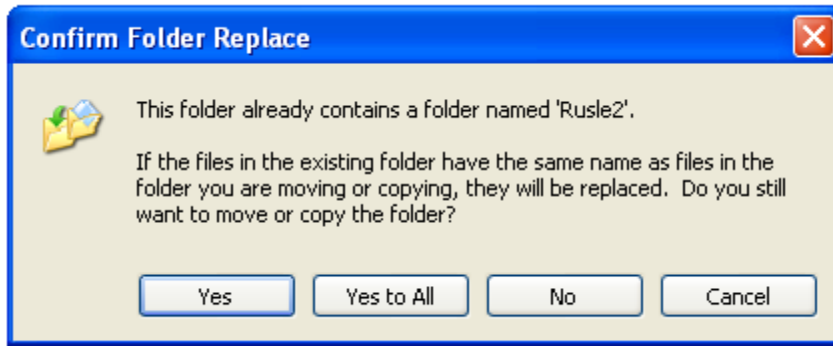
If the extraction process went correctly, you should see a "Rusle2" folder on your C-Drive. Within this folder should be several loose files and several folders including: Archives, Binaries, Corrupted, Export, Import, Printing, Session, and Users. The RUSLE2 programs requires this folder structure to operate.

Locate the Rusle2.exe file within the Binaries folder. Double click on the icon. The program should launch as described under #2 below.

Note. If you have an older version of RUSLE2 and wish to update to the version on the webpage, download per the above instructions. The process for updating should go as described below in #2 below.

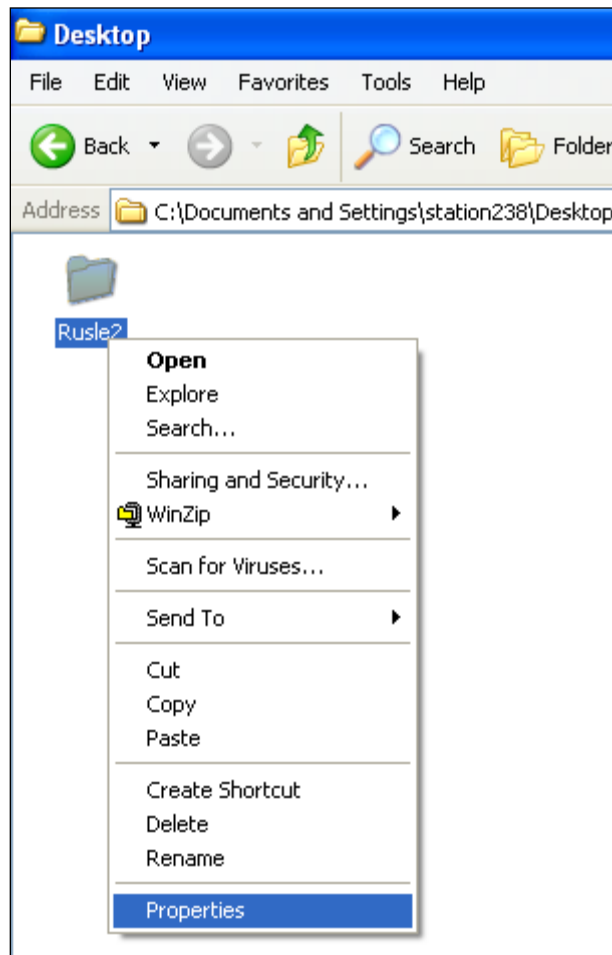
2. INSTRUCTIONS FOR UPDATING / INSTALL RUSLE2: The "Rusle2" folder is available on CD, select this file and copy to your station.



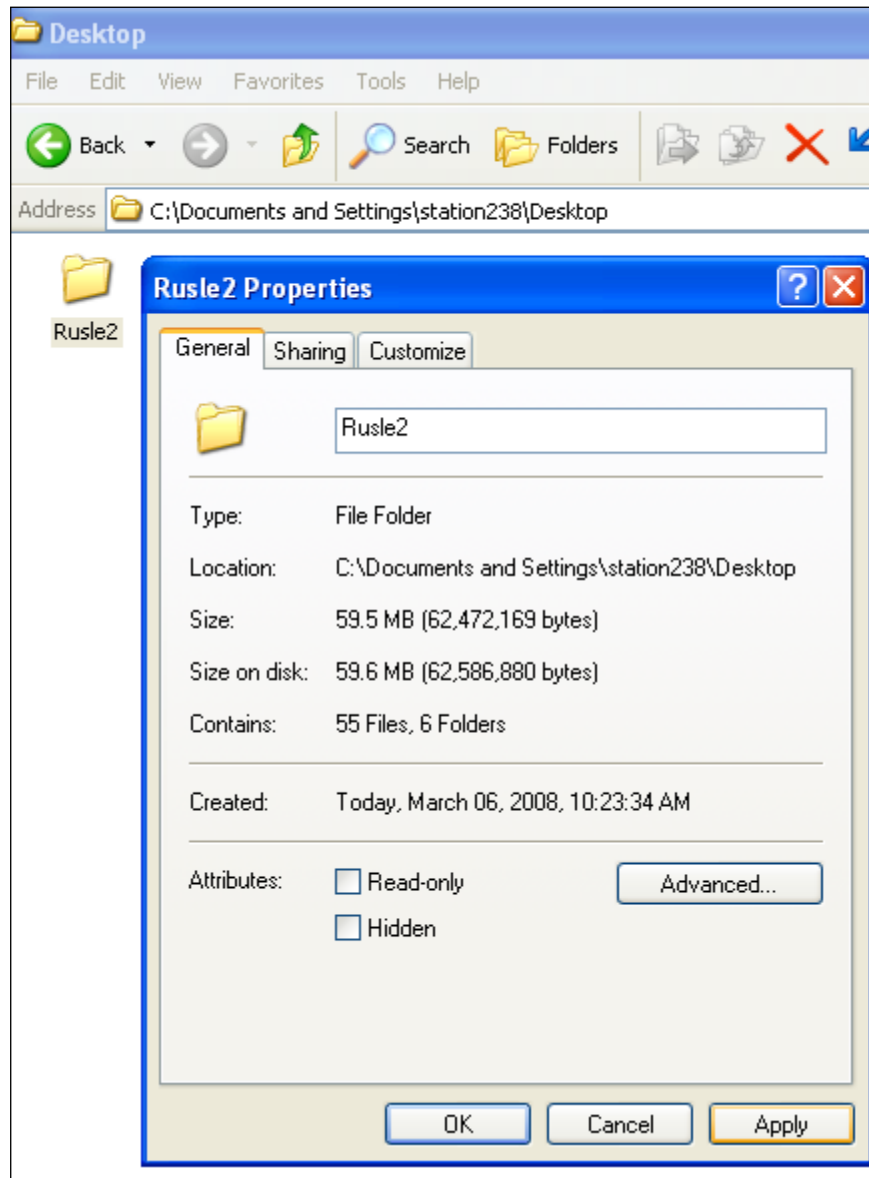


Note: In case of previous version loaded on your system, replace existing by select "Yes to All" on "Confirm Folder Replace" box to replace all folders. (*Rusle2 replaces all existing Rusle2 files*).

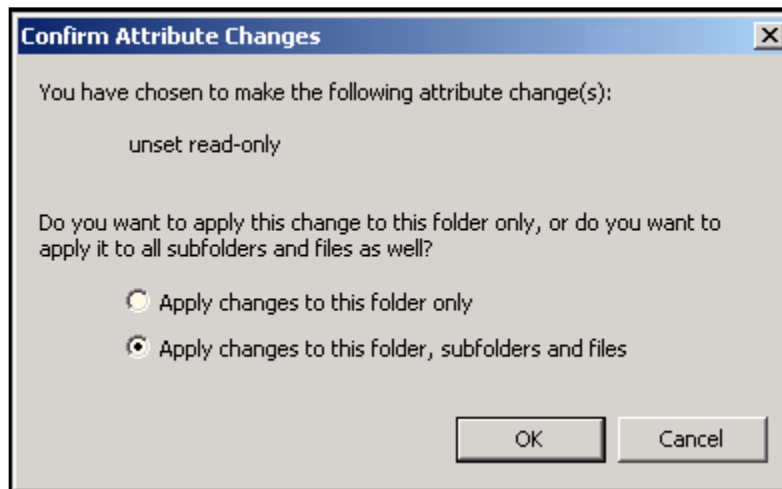
Then right click on Rusle2 folder and choose properties from drop down menu.



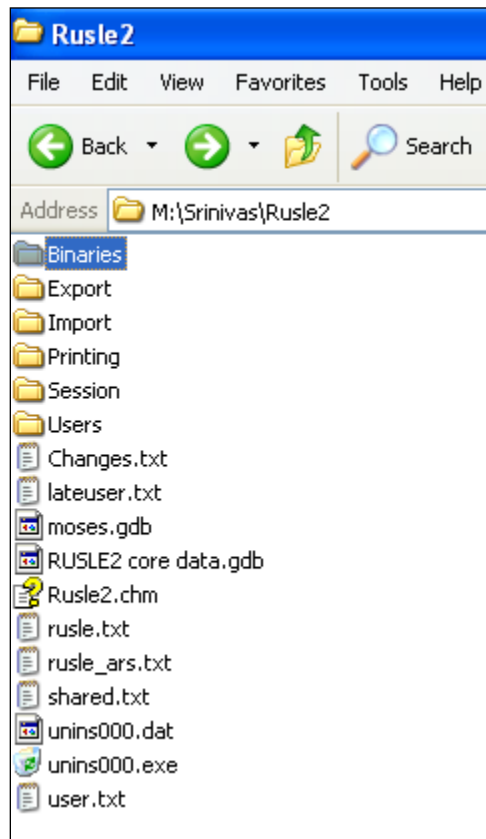
Uncheck "Read only" attributes and then choose apply. (*Rusle2 allows users to make changes and create profiles*).



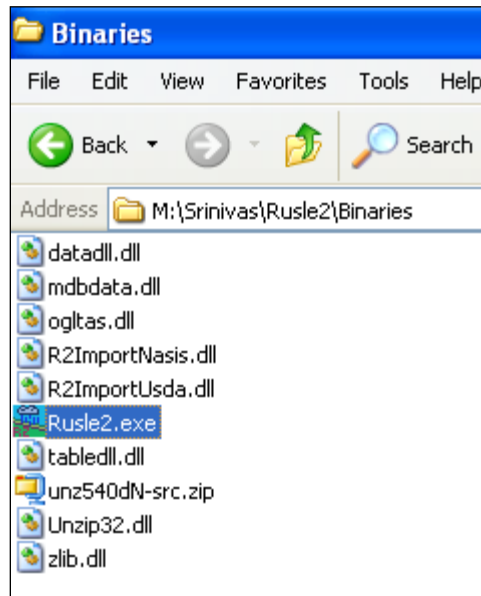
Check "Apply changes to this folder, subfolders and files" on "Confirm Attribute Changes" and then choose OK.



Open RUSLE2 folder, and select "Binaries".



Select "Rusle2.exe" to run the program.



The RUSLE2 program opens Caltrans template.

