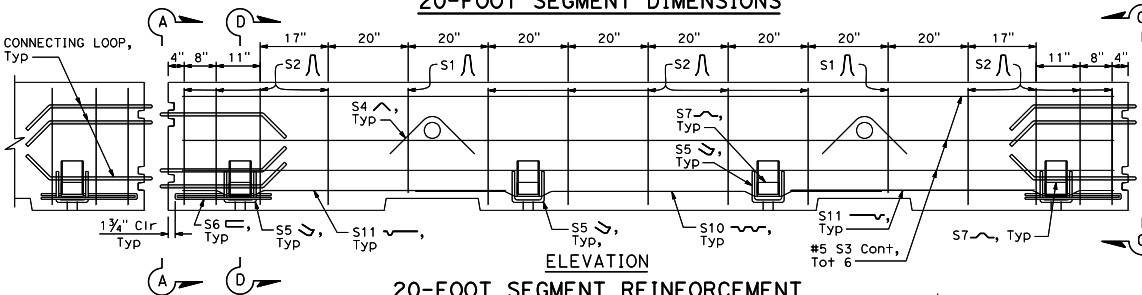
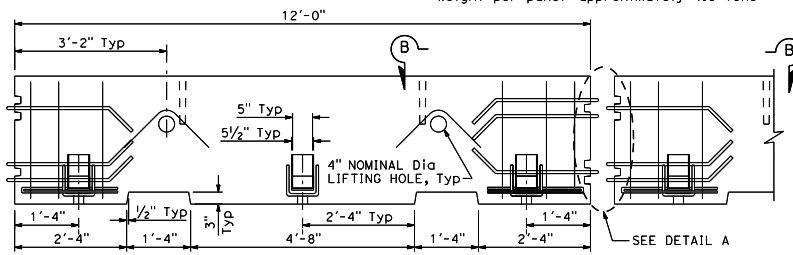


ELEVATION
20-FOOT SEGMENT DIMENSIONS

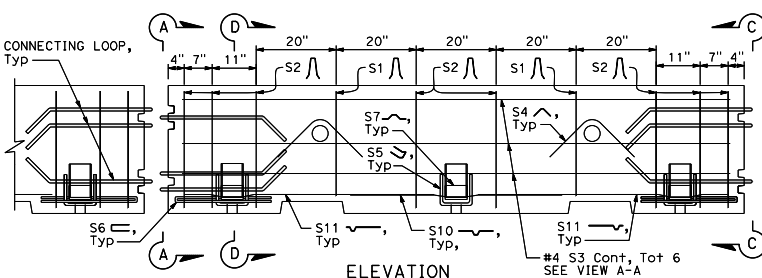


ELEVATION
20-FOOT SEGMENT REINFORCEMENT

Weight per panel: approximately 4.8 Tons

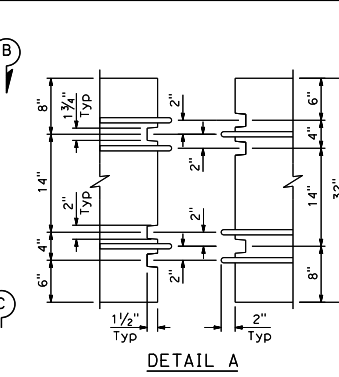


ELEVATION
12-FOOT SEGMENT DIMENSIONS

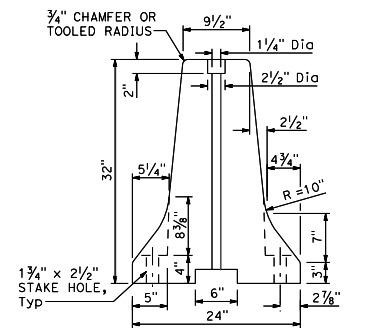
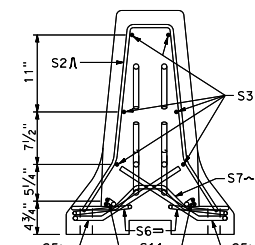
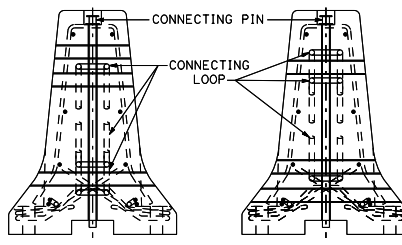


ELEVATION
12-FOOT SEGMENT REINFORCEMENT

Weight per panel: approximately 2.9 Tons

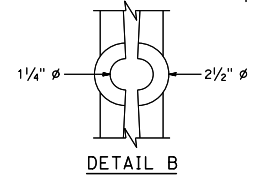
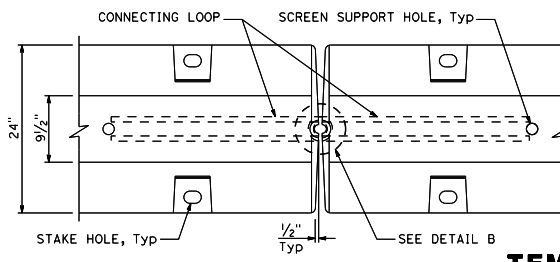


DETAIL A



TYPICAL SECTION TYPE F

For Temporary Barrier Cal-F23



STATE OF CALIFORNIA
DEPARTMENT OF TRANSPORTATION
**TEMPORARY BARRIER SYSTEM
(CAL F-23)**
NO SCALE

RSP T3F DATED OCTOBER 21, 2024 SUPPLEMENTS THE STANDARD PLANS BOOK DATED 2024.

REVISED STANDARD PLAN RSP T3F

DIST	COUNTY	ROUTE	POST MILES TOTAL PROJECT	SHEET NO.	TOTAL SHEETS

REGISTERED CIVIL ENGINEER
 Mohan V. Baniya
 No. C63046
 Exp. 6-30-26
 CIVIL
 STATE OF CALIFORNIA

October 21, 2024
 PLANS APPROVAL DATE
 THE STATE OF CALIFORNIA OR ITS OFFICERS OR AGENTS SHALL NOT BE RESPONSIBLE FOR THE ACCURACY OR COMPLETENESS OF SCANNED COPIES OF THIS PLAN SHEET.

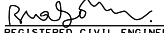
TO ACCOMPANY PLANS DATED _____

NOTES:

- Barrier segment edges must be chamfered 3/4" or toolled radius.
- Steel reinforcement must have a minimum 1" concrete coverage.
- Steel reinforcement may be bent to accommodate joint connection hardware, staking holes, and lifting holes.
- A continuous steel reinforcement bar may be used instead of S10 and S11.

2024 REVISED STANDARD PLAN RSP T3F

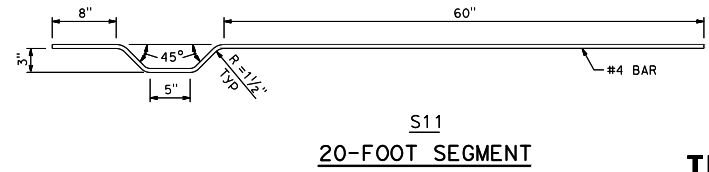
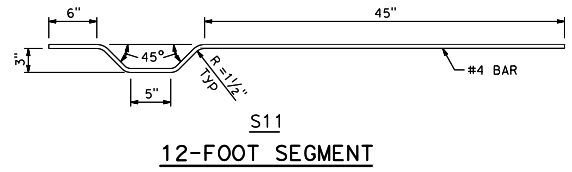
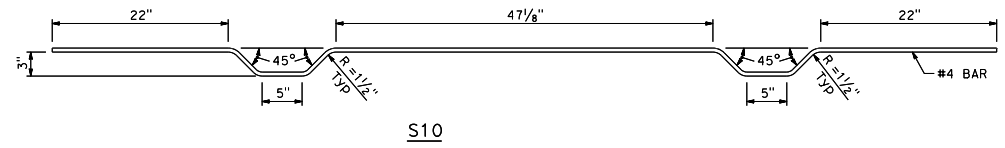
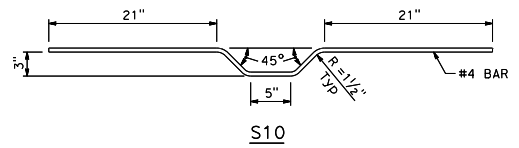
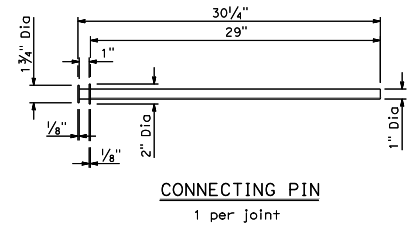
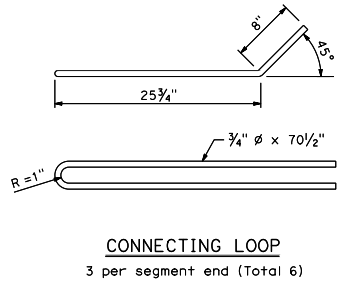
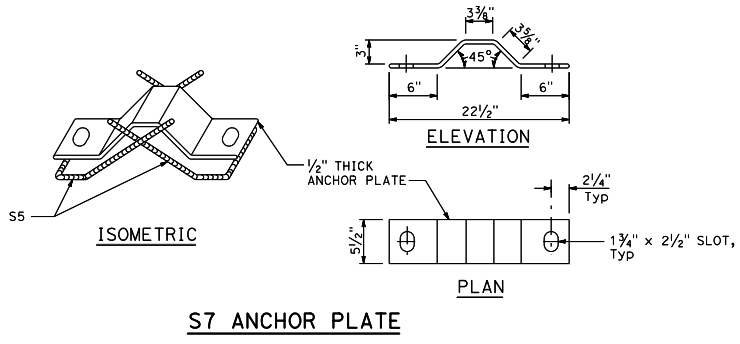
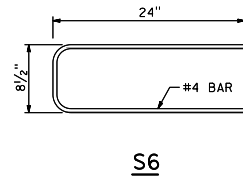
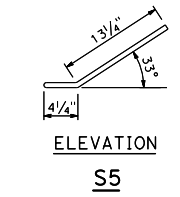
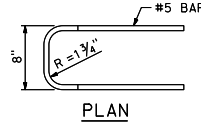
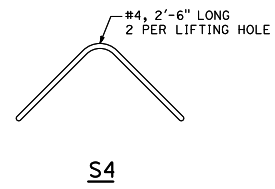
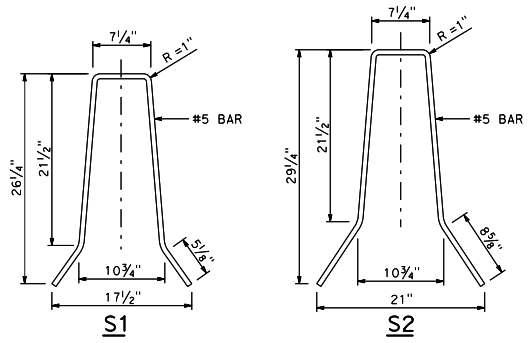
DIST	COUNTY	ROUTE	POST MILES TOTAL PROJECT	SHEET TOTAL NO. SHEETS


 REGISTERED CIVIL ENGINEER
 Mohan V. Bannia
 No. C63046
 Exp. 6-30-26
 CIVIL
 STATE OF CALIFORNIA

October 21, 2024
 PLANS APPROVAL DATE:
 THE STATE OF CALIFORNIA OR ITS OFFICERS OR AGENTS SHALL NOT BE RESPONSIBLE FOR THE ACCURACY OR COMPLETENESS OF SCANNED COPIES OF THIS PLAN SHEET.

TO ACCOMPANY PLANS DATED _____

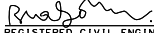
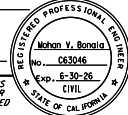
NOTE:
1. Reinforcement S5, S6, and S7 must be galvanized post fabrication.



STATE OF CALIFORNIA
DEPARTMENT OF TRANSPORTATION
**TEMPORARY BARRIER SYSTEM
(CAL F-23)**
NO SCALE

RSP T3F2 DATED OCTOBER 21, 2024 SUPPLEMENTS THE STANDARD PLANS BOOK DATED 2024.
REVISED STANDARD PLAN RSP T3F2

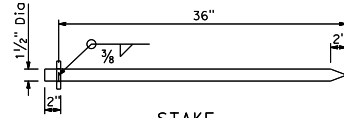
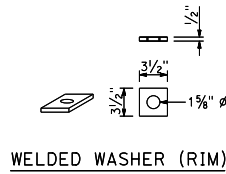
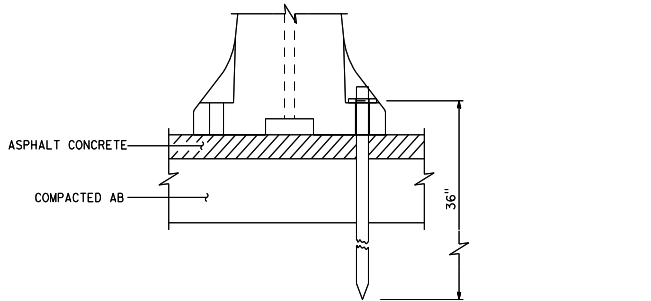
2024 REVISED STANDARD PLAN RSP T3F2

Dist	COUNTY	ROUTE	POST MILES TOTAL PROJECT	SHEET TOTAL NO. SHEETS
 REGISTERED CIVIL ENGINEER				
October 21, 2024 PLANS APPROVAL DATE:				
				
<small>THE STATE OF CALIFORNIA OR ITS OFFICERS OR AGENTS SHALL NOT BE RESPONSIBLE FOR THE ACCURACY OR COMPLETENESS OF SCANNED COPIES OF THIS PLAN SHEET.</small>				

TO ACCOMPANY PLANS DATED _____

NOTES:

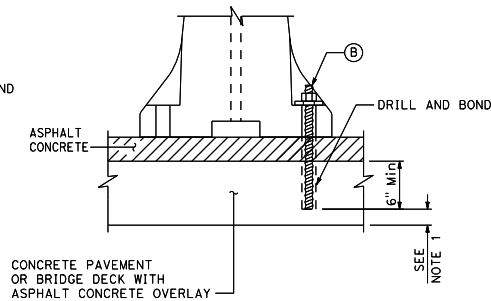
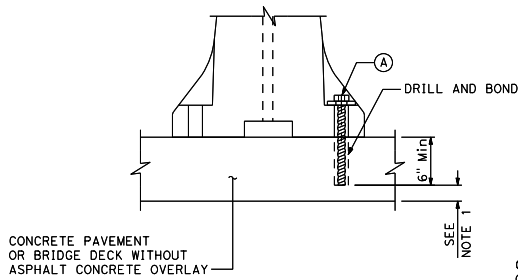
1. Maintain a minimum 1/2" clearance from bottom for bridge decks.
2. Staked temporary barrier systems must be supported by a minimum 4" thick asphalt concrete or existing asphalt concrete pavement.



WELDED WASHER (RIM)

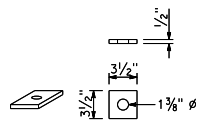
STAKE

STAKE DETAILS

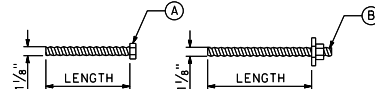


CONCRETE PAVEMENT
OR BRIDGE DECK WITHOUT
ASPHALT CONCRETE OVERLAY

CONCRETE PAVEMENT
OR BRIDGE DECK WITH
ASPHALT CONCRETE OVERLAY

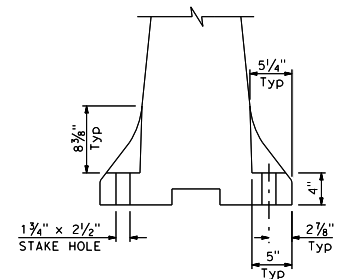
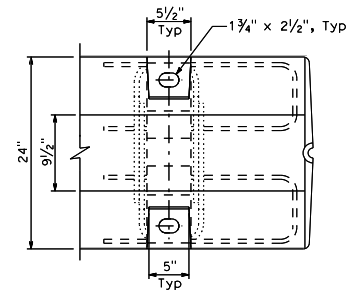


WASHER



ANCHOR BOLT OR THREADED ROD

ANCHOR DETAILS



STAKE HOLE DETAILS

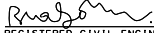
STATE OF CALIFORNIA
DEPARTMENT OF TRANSPORTATION
**TEMPORARY BARRIER SYSTEM
(STAKING OR ANCHORING)**
NO SCALE

RSP T3G DATED OCTOBER 21, 2024 SUPPLEMENTS THE STANDARD PLANS BOOK DATED 2024.

REVISED STANDARD PLAN RSP T3G

2024 REVISED STANDARD PLAN RSP T3G

Dist	COUNTY	ROUTE	POST MILES TOTAL PROJECT	SHEET TOTAL No. SHEETS


 REGISTERED CIVIL ENGINEER
 Mohan V. Bannia
 No. C63046
 Exp. 6-30-26
 CIVIL
 STATE OF CALIFORNIA

October 21, 2024
 PLANS APPROVAL DATE:
 THE STATE OF CALIFORNIA OR ITS OFFICERS
 OR AGENTS SHALL NOT BE RESPONSIBLE FOR
 THE ACCURACY OR COMPLETENESS OF SCANNED
 COPIES OF THIS PLAN SHEET.

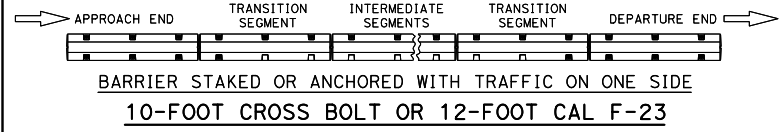
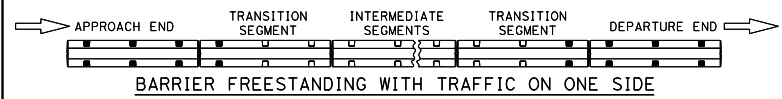
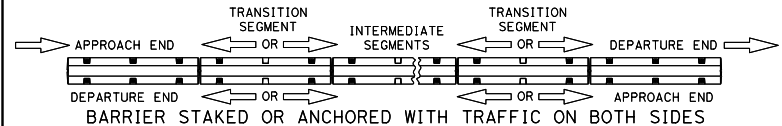
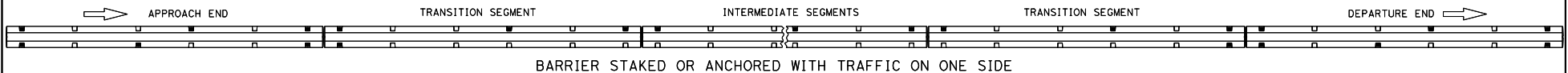
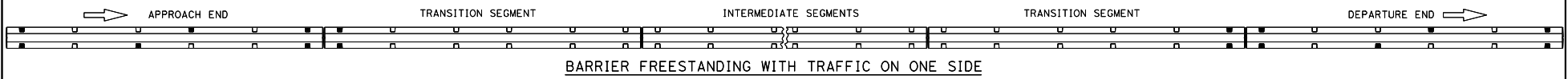
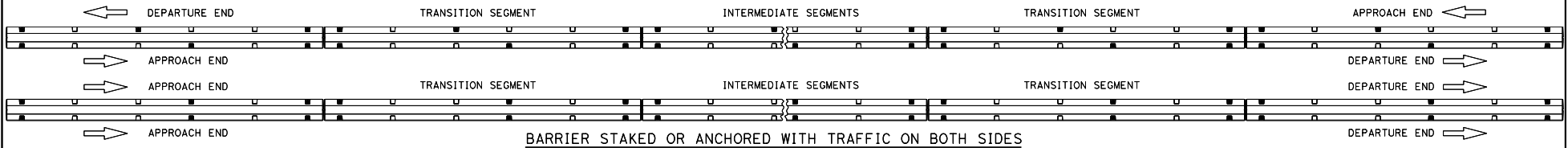
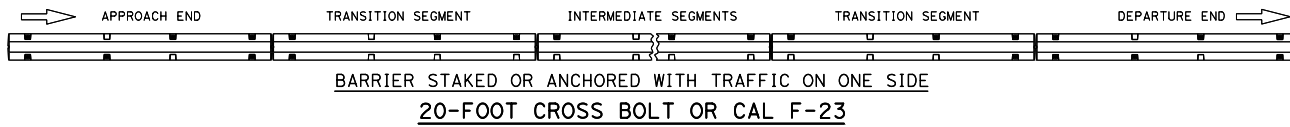
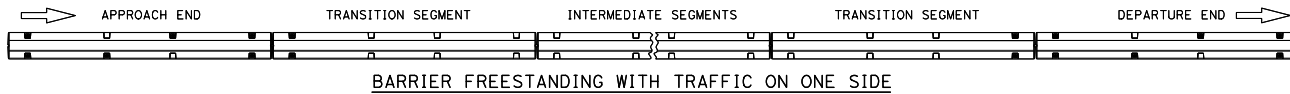
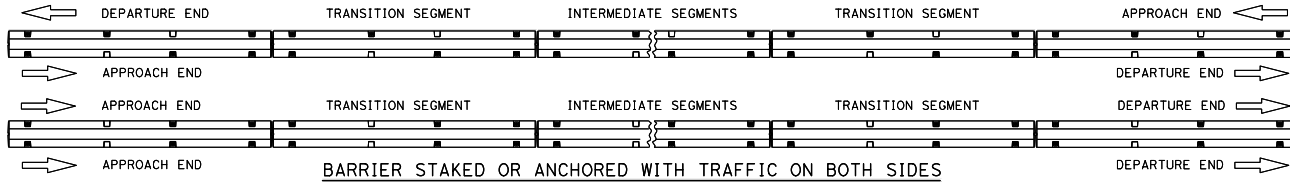
TO ACCOMPANY PLANS DATED _____

NOTE:

1. Staked temporary barrier systems must be supported by a minimum 4" thick asphalt concrete or existing asphalt concrete pavement.

LEGEND

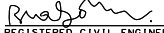
- STAKE OR ANCHOR
- ➡ DIRECTION OF TRAFFIC



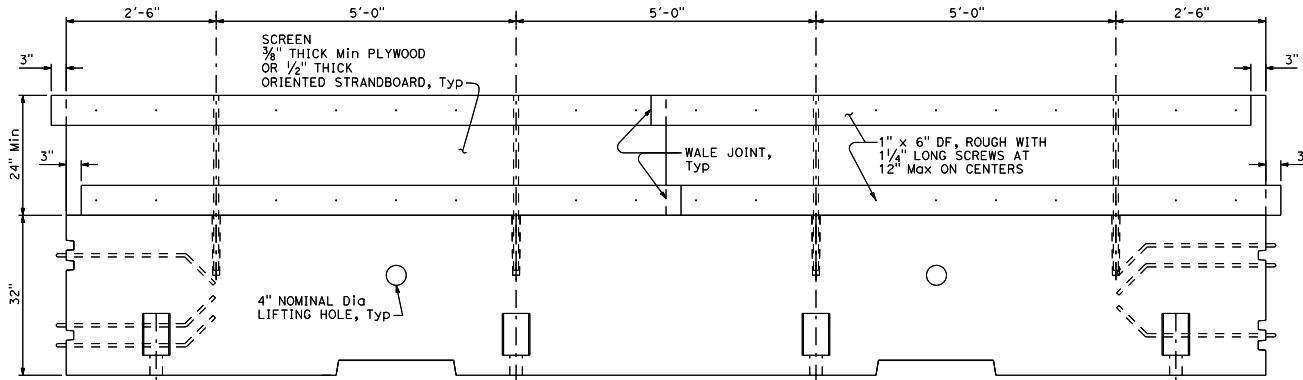
STATE OF CALIFORNIA
DEPARTMENT OF TRANSPORTATION
**TEMPORARY BARRIER SYSTEM
(STAKING OR ANCHORING)**
NO SCALE

RSP T3G2 DATED OCTOBER 21, 2024 SUPPLEMENTS THE STANDARD PLANS BOOK DATED 2024.
REVISED STANDARD PLAN RSP T3G2

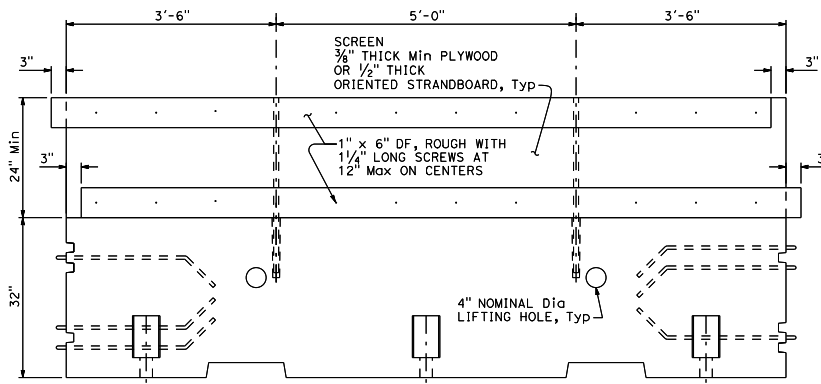
2024 REVISED STANDARD PLAN RSP T3G2

Dist	COUNTY	ROUTE	POST MILES TOTAL PROJECT	SHEET TOTAL NO. SHEETS
 REGISTERED CIVIL ENGINEER No. C63046 Exp. 6-30-26 CIVIL STATE OF CALIFORNIA				
October 21, 2024 PLANS APPROVAL DATE: THE STATE OF CALIFORNIA OR ITS OFFICERS OR AGENTS SHALL NOT BE RESPONSIBLE FOR THE ACCURACY OR COMPLETENESS OF SCANNED COPIES OF THIS PLAN SHEET.				

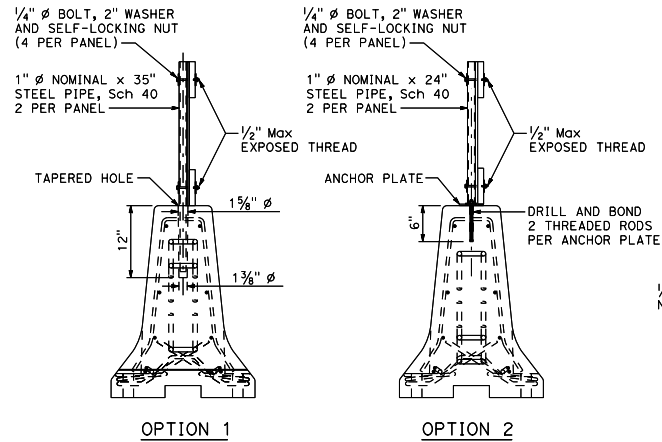
TO ACCOMPANY PLANS DATED _____



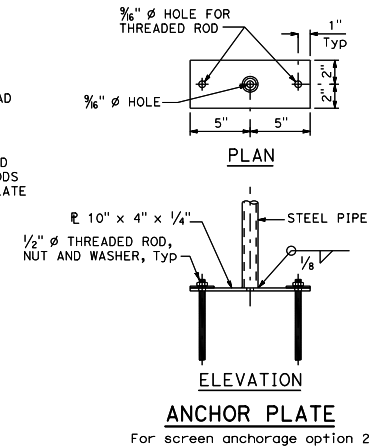
ELEVATION 20-FOOT SEGMENT
TEMPORARY TRAFFIC SCREEN (WOOD) DETAIL 1
2 Panels per barrier segment



ELEVATION 12-FOOT SEGMENT
TEMPORARY TRAFFIC SCREEN (WOOD) DETAIL 2
1 Panel per barrier segment



OPTION 1
OPTION 2
SCREEN ANCHORAGE



PLAN
ELEVATION
ANCHOR PLATE
For screen anchorage option 2

STATE OF CALIFORNIA
DEPARTMENT OF TRANSPORTATION
TEMPORARY TRAFFIC SCREEN
(CAL F-23)
NO SCALE

RSP T48 DATED OCTOBER 21, 2024 SUPPLEMENTS THE STANDARD PLANS BOOK DATED 2024.

REVISED STANDARD PLAN RSP T4B

2024 REVISED STANDARD PLAN RSP T4B