

UNINCORPORATED AREA

COUNTY OF BLISS



ALMOND AVENUE

N0°24'13"W
64.02'

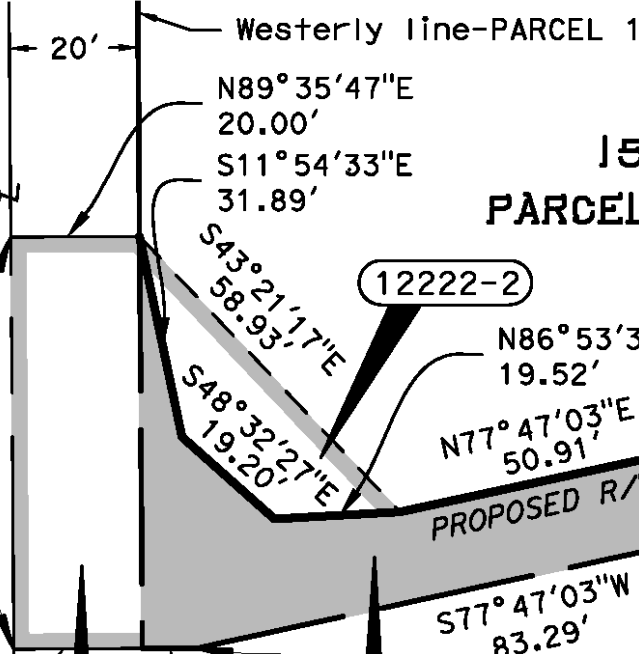
S89°35'47"W
20.00'

57.08'

12222-3

12222-1

S89°54'39"W
8.47'



NOTE: The State of California or its officers or agents shall not be responsible for the accuracy or completeness of digital images of this map.

15 P. M. 2
PARCEL 1 PARCEL 2
T.2S.R.11E.Z.M.
SECTION 18

POINT OF COMMENCEMENT
SW COR SEC 18-2/11
FD 2.5" DOT BRASS CAP
PER CR 4200 BCR

For Illustration
Purposes Only

LEGEND		NOTES					
	Parcel 12222-1 Fee	Coordinates and bearings are on CCS 1983 Zone 9 (EPOCH 1991.35). Distances and stationing are grid distances. Divide by 0.9999999 to obtain ground distances. All distances are in feet unless otherwise noted.					
	Parcel 12222-2 TCE						
	Parcel 12222-3 Underlying Fee						
DRAFTED BY	DATE	DISTRICT	COUNTY	ROUTE	SHEET PM	SHEET NO.	TOTAL SHEETS
XYZ	6/20/2025	20	BLI	479	70	2	2

STATE OF CALIFORNIA
CALIFORNIA STATE TRANSPORTATION AGENCY
DEPARTMENT OF TRANSPORTATION

**RIGHT OF WAY
RESOLUTION OF NECESSITY**

DETAIL MAP
EXHIBIT "B"

COPYRIGHT 2019 CALIFORNIA DEPARTMENT OF TRANSPORTATION.
ALL RIGHTS RESERVED.

SCALE: 1" = 30'