

Dist	COUNTY	ROUTE	POST MILES TOTAL PROJECT	SHEET No.	TOTAL SHEETS
03	Pla	65	R11.9/R24.1		

REGISTERED CIVIL ENGINEER DATE \_\_\_\_\_

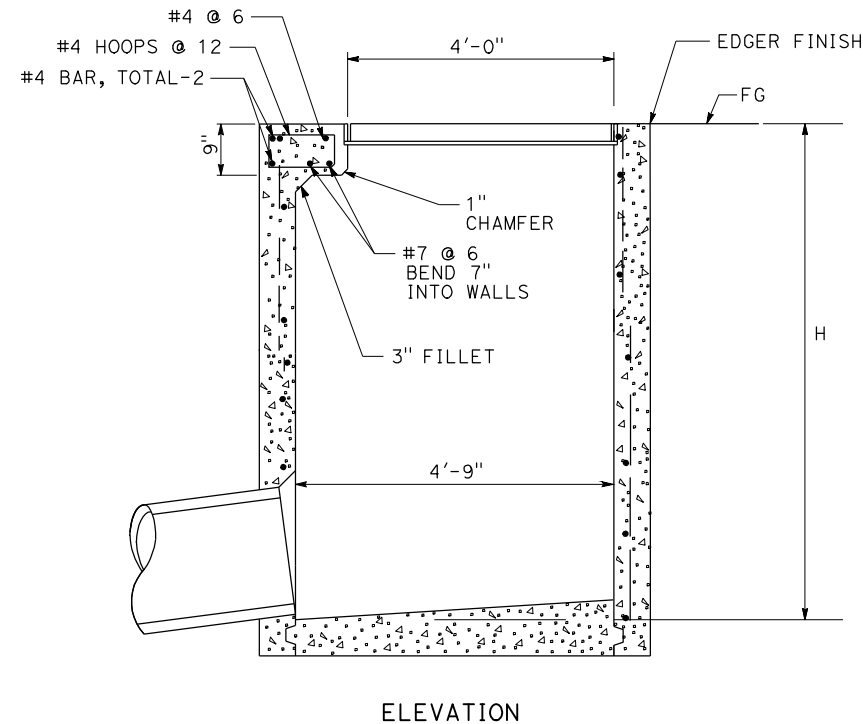
PLANS APPROVAL DATE \_\_\_\_\_

THE STATE OF CALIFORNIA OR ITS OFFICERS OR AGENTS SHALL NOT BE RESPONSIBLE FOR THE ACCURACY OR COMPLETENESS OF SCANNED COPIES OF THIS PLAN SHEET.

### APC ALLOWABLE PIPE MATERIAL

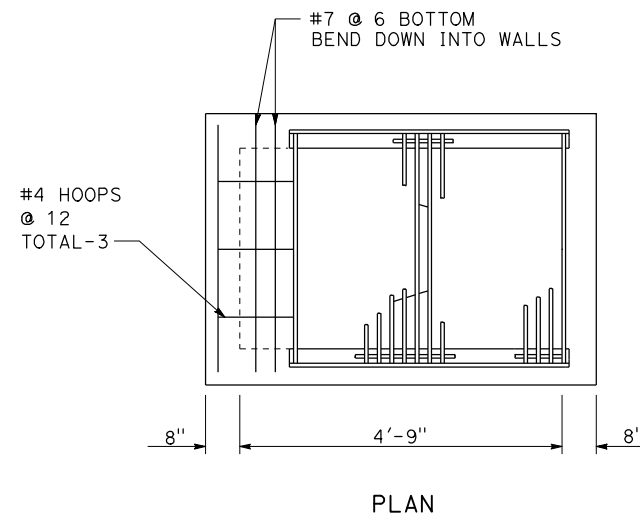
DESCRIPTION	TYPE				
	CSP* (0.138")	RCP CLASS IV	HDPE TYPE C, D OR S	PVC	SSRP* (3/4" x 3/4") 7.5" PITCH
	SIZE	SIZE	SIZE	SIZE	SIZE
6" APC	6"	6"	6"	6"	6"
18" APC	18"	18"	18"	18"	18"
24" APC	24"	24"	24"	24"	24"

\* ALLOWABLE COATINGS:  
 POLYMERIZED ASPHALT  
 POLYMERIC SHEET COATING  
 COMPOSITE STEEL SPIRAL RIB PIPE

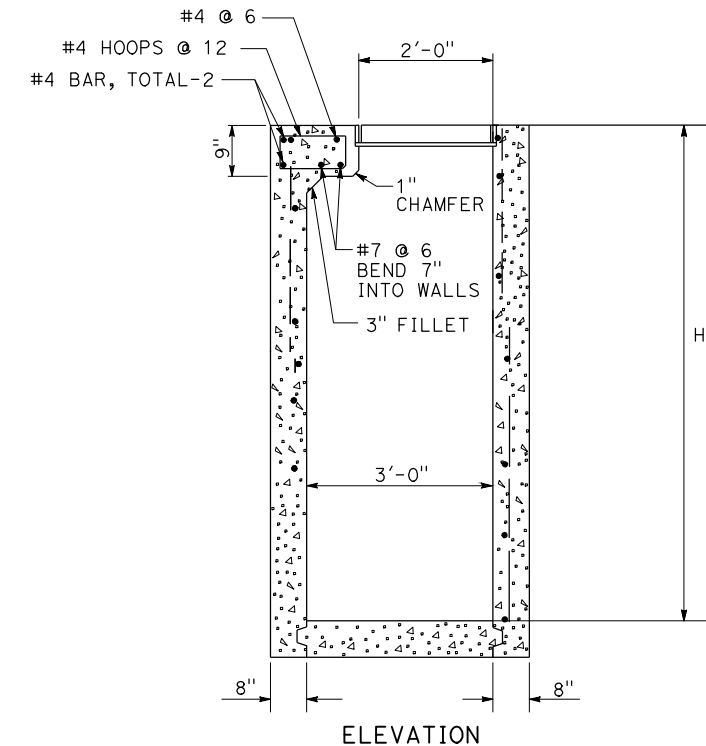


**Mod TYPE GDO INLET**

(FOR DETAILS NOT SHOWN SEE S+d PLAN D74B, D77A, D77B)



PLAN



**Mod TYPE GT4 INLET**

(FOR DETAILS NOT SHOWN SEE S+d PLAN D74B, D77A)

THIS EXAMPLE IS ONE OF MANY EXAMPLES OF THE VARIOUS TYPES OF PROJECT PLAN SHEETS FROM THE SAME CONSTRUCTION PROJECT, "ROUTE 65 BYPASS PROJECT."

## DRAINAGE DETAILS SHEET, EXAMPLE "65 DD-1"

## DRAINAGE DETAILS

NO SCALE

**DD-1**



STATE OF CALIFORNIA - DEPARTMENT OF TRANSPORTATION - **Caltrans**

REVISOR BY DATE

CALCULATED-DESIGNED BY CHECKED BY

FUNCTIONAL SUPERVISOR

TRANSPORTATION

STATE OF CALIFORNIA