



SR-39 Reopening Project Scoping Meeting

PM R40.0 / R44.4 EA 07-34770

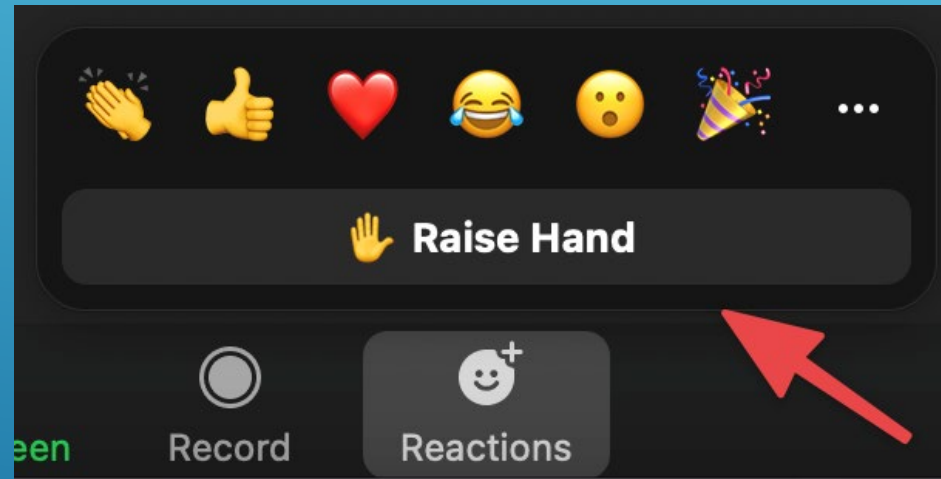
December 15, 2022



District 7 (Los Angeles and Ventura Counties)

Getting Started

- Spanish Translation is Available
- Comments Are Welcome – Raise Your Hand to speak OR use Chat
- 3 Minutes Per Speaker
- Listen, Speak, Respect
- Meeting is Being Recorded



SR-39 Reopening Project Scoping Meeting

December 15, 2022, 6:30 PM

- **Welcome and Introductions** 6:35 PM
- **Presentation:** 6:40 – 7:10 PM
 - Environmental Process
 - Scoping Process
 - Project Background
 - Project Alternatives
- **Public Comment** 7:10 – 8:30 PM



SCOPING PROCESS

Purpose of Scoping

- To identify issues to be addressed in the environmental documents

Your Role in Scoping

- Identify resources and potential impacts that should be evaluated
- Identify the level of detail in the analysis
- Identify alternatives or project features that should be considered
- Identify potential mitigation strategies

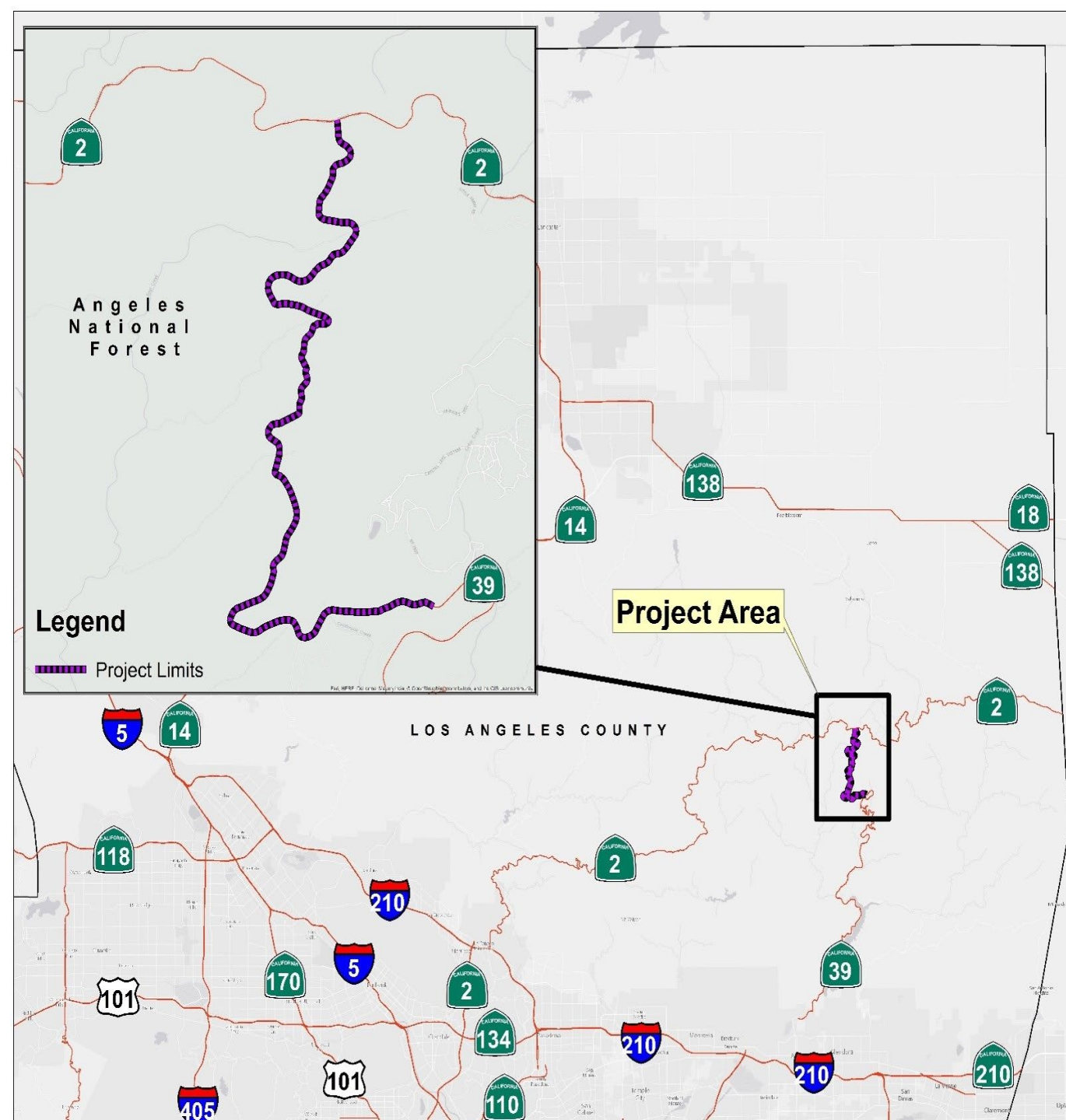
How You Can Help

- Provide verbal and written comments
- Get on our mailing list and check the project website
- Stay involved

SR-39 PROJECT AREA

State Route 39
(San Gabriel Canyon Road)

State Route 2
(Angeles Crest Highway)



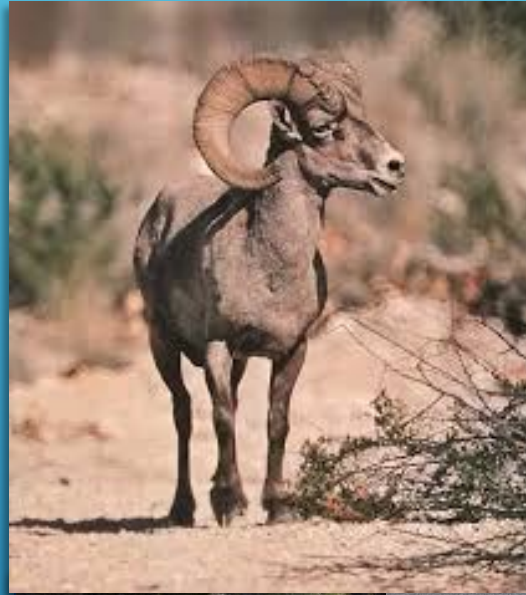
SR-39 BACKGROUND

- Closed Since 1978
- Maintenance for emergency access



PRIOR EFFORTS TO REOPEN CLOSED SECTION

- Environmental Document completed 2009
- Project terminated due to environmental concerns, geologic instability, and funding constraints



SR-39 REOPENING CHALLENGES

Environmental

- Big Horn Sheep
Protected Species

Geotechnical

- Slope instability

Constructability

- Remote location
- Construction window



PROJECT PURPOSE AND NEED

Project Purpose:

- Restore access between Interstate-210 and State Route-2.
- Enhance access for fire suppression forces, search and rescue, and emergency response personnel.
- Improve access for pedestrians, bicyclists, and public transportation.
- Improve safety and operation of the roadway, reduce vehicle congestion, and address parking capacity issues.

Project Need:

- The current conditions continue to degrade and pose a safety hazard to maintenance crews and other users of the roadway.
- Compliance with the California Streets and Highway Code, Section 91 and 100 which mandate that Caltrans shall improve and maintain state highways as provided in the code, and that Caltrans shall monitor the cumulative impacts of fragmented gaps in the State Highway System (SHS) to identify safety and long-term maintenance issues.
- Assist in satisfying goals and policies as outlined in the Angeles National Forest Land Management Plan.
- Provide enhanced access for the Los Angeles County Sheriff's Department and other emergency personnel in search and rescue activities and a reduction in response times.



PROJECT ALTERNATIVES

Alt 1: No Build

Alt 2: Evacuation Route

Alt 3: Recreation Route

Alt 4: Full Public Opening

Alt 5: Viaduct Construction

Alt 6: Single Lane



PROJECT ALTERNATIVES

Alt 1: No Build



- Continued maintenance for emergency response

PROJECT ALTERNATIVES

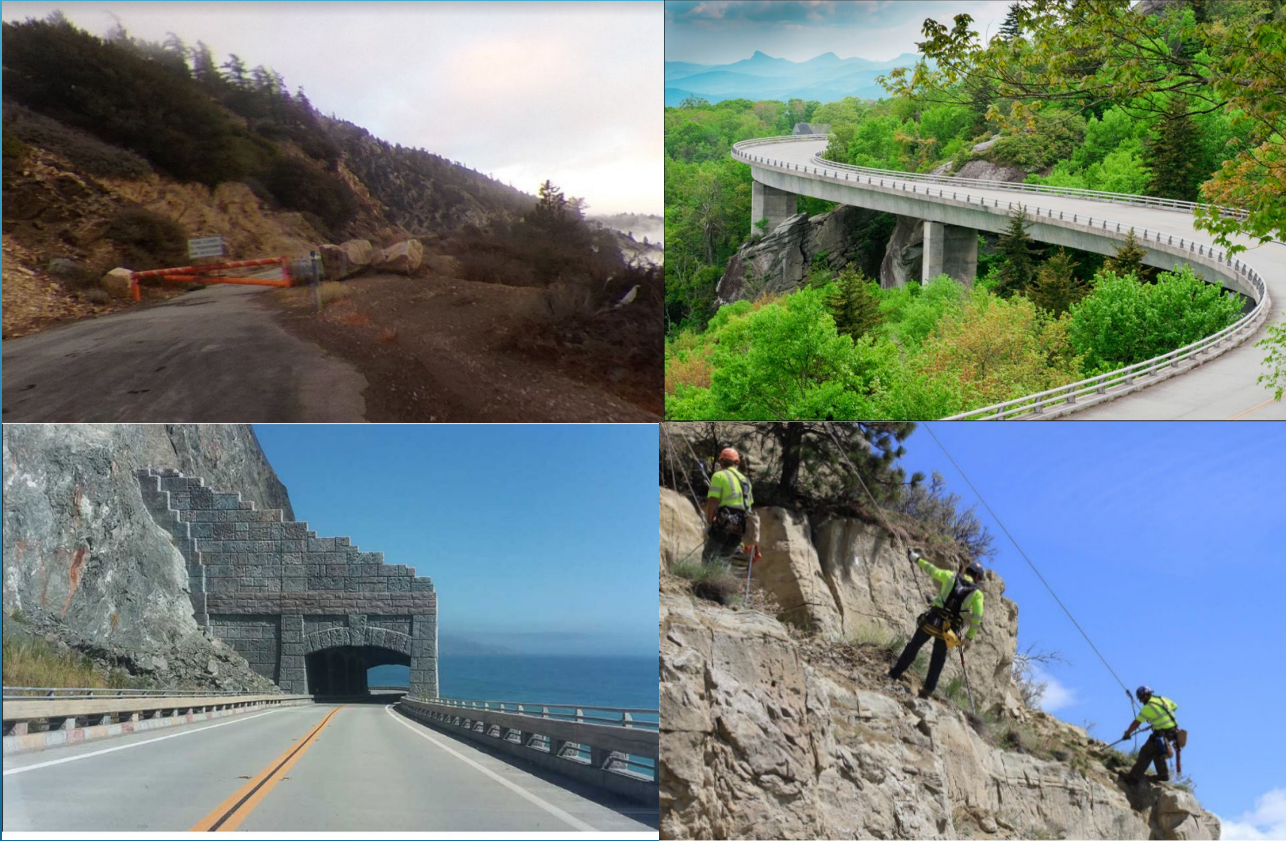
Alt 2: Evacuation Route

- Access for emergency and maintenance vehicles only (improve current emergency access)
- Roadway reconstruction
- Drainage restoration
- Soldier pile retaining walls
- Guardrail upgrades



PROJECT ALTERNATIVES

Alt 3: Recreation Route



- Access for pedestrians and bikers
- Vehicles restricted to shuttles at low speeds
- Parking lots for visitors
- Roadway reconstruction (drainage restoration, retaining walls, guardrail upgrades)
- 1 major viaduct
- 2 rock sheds
- 6 soldier pile retaining walls
- 8 rock scaling locations

PROJECT ALTERNATIVES

Alt 4: Full Public Opening

- Unrestricted vehicle access
- 1 major viaduct
- 2 rock sheds
- 6 soldier pile retaining walls
- 8 rock scaling locations
- 3 additional viaducts for wildlife crossings
- Wildlife fencing for entire segment



PROJECT ALTERNATIVES

Alt 5: Viaduct Construction



- Unrestricted vehicle access
- 4.4 miles of elevated viaduct structure

PROJECT ALTERNATIVES

Alt 6: Single Lane

- Unrestricted vehicle access
- One 12' Lane
- 4' Outside Shoulders
- 3 Viaducts
- Wildlife fencing



ENVIRONMENTAL PROCESS

We are here

Scoping Meeting

Perform Environmental Studies

Identify Impacts/
Screen Alternatives

Prepare DED
(Environmental Impact Report/
Environmental Assessment)

DED Comment Period
(Public Meeting)

Identify Preferred Alternative

Prepare FED

December 15, 2022
(Today)

Ongoing

Winter 2022 to
Fall 2023

Fall 2023

Summer 2024



PRELIMINARY LIST OF ISSUES TO BE ANALYZED

- Biological Resources
- Cultural Resources
- Noise
- Visual/Aesthetics
- Geology
- Air Quality/Greenhouse Gases
- Hydrology/Floodplain
- Hazardous Waste
- Water Quality/Storm Water Runoff
- Community Impacts
- Recreation
- Construction Impacts
- Cumulative Impacts
- Section 4(f)

NEXT STEPS

- Draft Environmental Document (Environmental Impact Report / Environmental Assessment) in 2022-2023
- Public Comment Period in Fall 2023
- Final Environmental Document in Summer 2024
- Final Project Approval in Summer 2024



HOW TO SUBMIT YOUR COMMENTS

All comments received will become part of the project record and will provide valuable input to our environmental and design personnel. **Scoping comments must be submitted by Monday, January 16th, 2023.**

- **Mail comments to:**
Karl Price
Division of Environmental Planning (Project EA 07-34770)
California Department of Transportation, District 7
100 South Main Street, MS 16A
Los Angeles, CA 90012
- **Email comments to:** karl.price@dot.ca.gov
- **Questions:** Contact Karl Price, Division of Environmental Planning, at (213) 266-3822 or karl.price@dot.ca.gov.
- **Meeting Presentation** <https://dot.ca.gov/DOT/caltrans-near-me/district-7/district-7-projects/d7-sr39-reopening>
- **Meeting Recording** – Caltrans YouTube Channel
<https://www.youtube.com/@CaltransD7/featured>



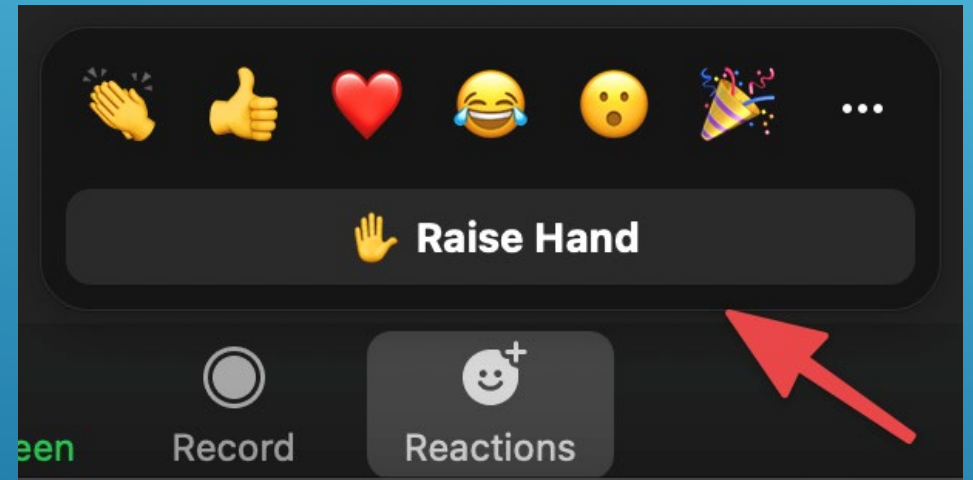
PUBLIC COMMENT PERIOD



You Speak – We Listen

Participation Tips and Information

- Spanish and English Translation of comments
- Comments Are Welcome – Raise Your Hand to speak OR use Chat
- 3 Minutes Per Speaker
- Listen, Speak, Respect



HOW TO SUBMIT YOUR COMMENTS

All comments received will become part of the project record and will provide valuable input to our environmental and design personnel. **Scoping comments must be submitted by Monday, January 16th, 2023.**

- **Mail comments to:**
Karl Price
Division of Environmental Planning (Project EA 07-34770)
California Department of Transportation, District 7
100 South Main Street, MS 16A
Los Angeles, CA 90012
- **Email comments to:** karl.price@dot.ca.gov
- **Questions:** Contact Karl Price, Division of Environmental Planning, at (213) 266-3822 or karl.price@dot.ca.gov.
- **Meeting Presentation** <https://dot.ca.gov/DOT/caltrans-near-me/district-7/district-7-projects/d7-sr39-reopening>
- **Meeting Recording** – Caltrans YouTube Channel
<https://www.youtube.com/@CaltransD7/featured>

