

# WELCOME TO THE GUADALUPE AREA PROJECTS INFORMATIONAL OVERVIEW

We will start at 5:30 PM  
On January 21, 2026



QR code  
For project Website!



**Caltrans**  
CENTRAL COAST | DISTRICT 5

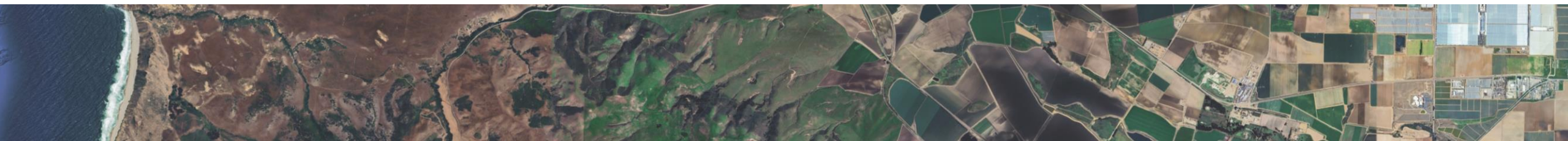






# TEAM INTRODUCTIONS

---



# TITLE VI OF THE CIVIL RIGHTS ACT OF 1964

## TÍTULO VI DE LA LEY DE DERECHOS CIVILES DE 1964

Caltrans programs and activities will be administered without regard to race, color, national origin, gender, age, disability or income.

See Caltrans Title VI policies at <https://dot.ca.gov/programs/civil-rights/title-vi>



Los programas y actividades de Caltrans se administrarán sin tener en cuenta la raza, el color, el origen nacional, el género, la edad, la discapacidad o los ingresos.

Consulte las políticas del Título VI de Caltrans en <https://dot.ca.gov/programs/civil-rights/title-vi>



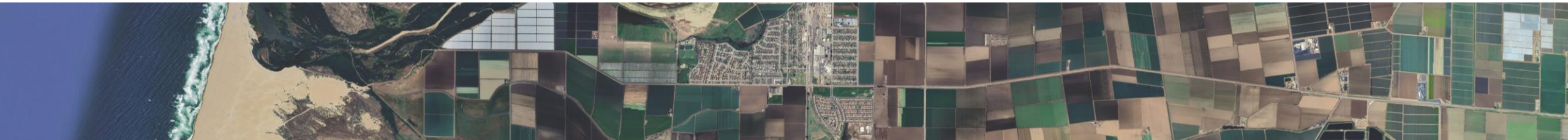
Office of Business and  
Economic Opportunity  
1823 14th Street, MS-79  
Sacramento, CA 95811



[Title.VI@dot.ca.gov](mailto:Title.VI@dot.ca.gov)



(916) 324-8379  
(TTY 711)







## BEFORE WE BEGIN..

- Please leave your contact information on the sign-in sheet
- Comments and questions will be taken at the end of the presentation



# GUADALUPE AREA PROJECTS

---

05-1E030

Guadalupe ADA Sidewalk and Curb Improvements

05-1M310

Guadalupe Active Partnership  
for Signalization & Pavement  
Preservation Santa Maria

05-1N870

Guadalupe Pavement Preservation





# PROJECT PURPOSES

## 05-1E030

- Improve pedestrian infrastructure through the City of Guadalupe by making the path of pedestrian travel accessible and Americans with Disabilities Act (ADA) compliant.

## 05-1M310

- Preserve and extend the life of the existing pavement.
- Improve the collection of traffic data
- Update guardrail to current safety standards.
- Replace signs and update curb ramps to meet ADA compliance.
- Increase utility of intersections for drivers, pedestrians, and cyclists.
- Signal Improvements
- Improve Railroad Crossing for vehicles, bicycles, and pedestrians

## 05-1N870

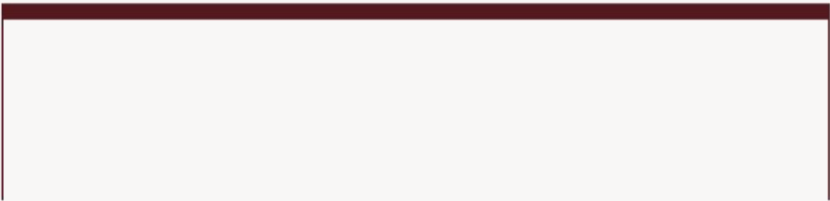
- Preserve and extend the service life of the existing pavement.



# GUADALUPE AREA PROJECTS CONSTRUCTION TIMELINE

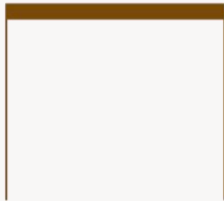
**05-1E030**

Guadalupe ADA Project



**05-1N870**

Guadalupe Pavement  
Preservation



Spring	Summer	Fall	Winter	Spring	Summer	Fall	Winter	Spring	Summer	Fall	Winter	Spring	Summer	Fall	Winter	Spring	Summer	Fall	Winter
2026				2027				2028				2029				2030			

Guadalupe Active Partnership for Signalization  
& Pavement Preservation Santa Maria

**05-1M310**



# AGENDA

---

05-1E030

GUADALUPE  
ADA SIDEWALK  
AND  
CURB IMPROVE  
MENTS

- PROJECT INFORMATION
- SIMULATIONS
- CONSTRUCTION IMPACTS
- PROJECT TIMELINE

05-1M310

GUADALUPE  
ACTIVE  
PARTNERSHIP FOR  
SIGNALIZATION &  
PAVEMENT  
PRESERVATION

- PROJECT INFORMATION
- SIMULATIONS
- CONSTRUCTION IMPACTS
- FUNDING SOURCES
- PROJECT TIMELINE

05-1N870

GUADALUPE  
PAVEMENT  
PRESERVATION

- PROJECT INFORMATION
- SIMULATIONS
- CONSTRUCTION IMPACTS
- PROJECT TIMELINE

CONSTRUCTION  
INFORMATION

QUESTIONS/  
COMMENTS  
AND CONTACTS



# 05-1E030

## GUADALUPE ADA SIDEWALK AND CURB IMPROVEMENTS

### LOCATION

North on SR 1 to 11th St. and east on SR 166 to Obispo St.

### DESCRIPTION

Add ADA pedestrian infrastructure improvements including upgrade driveways, curb ramps, and sidewalks.

### CURRENT PHASE

Construction

### CONSTRUCTION DATES

Spring 2026-Spring 2028

### COST

10,800,000



# FEATURES

---



SIDEWALK  
IMPROVEMENT



ADA

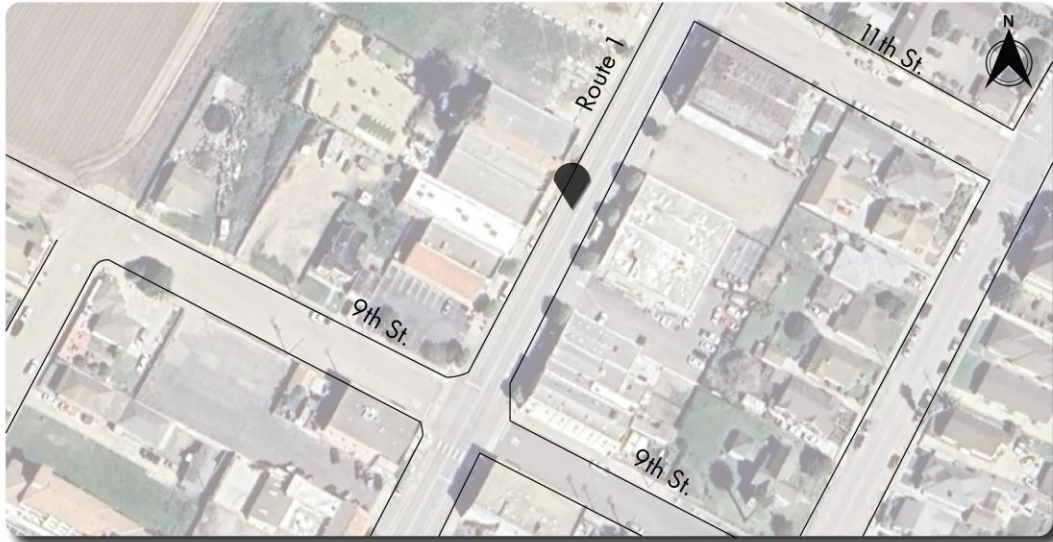


INTERSECTION  
BULBOUT



RECTANGULAR  
RAPID FLASHING  
BEACON





ON ROUTE 1 NEAR THE GUADALUPE  
SOCIAL CLUB LOOKING SOUTH

---

VIEW FROM  
GUADALUPE  
SOCIAL CLUB





# CONSTRUCTION IMPACTS

---

## Temporary Disruptions

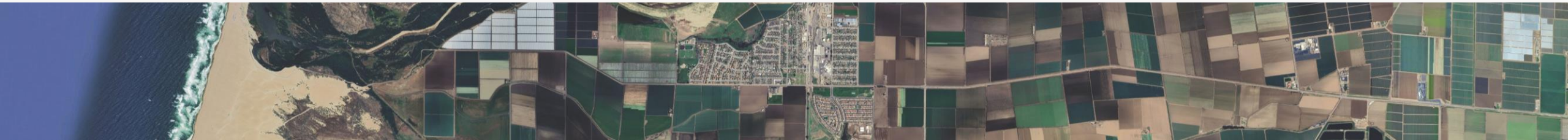
Night work

Temporary no parking adjacent to work area only

Contractor should be notifying properties of construction schedule

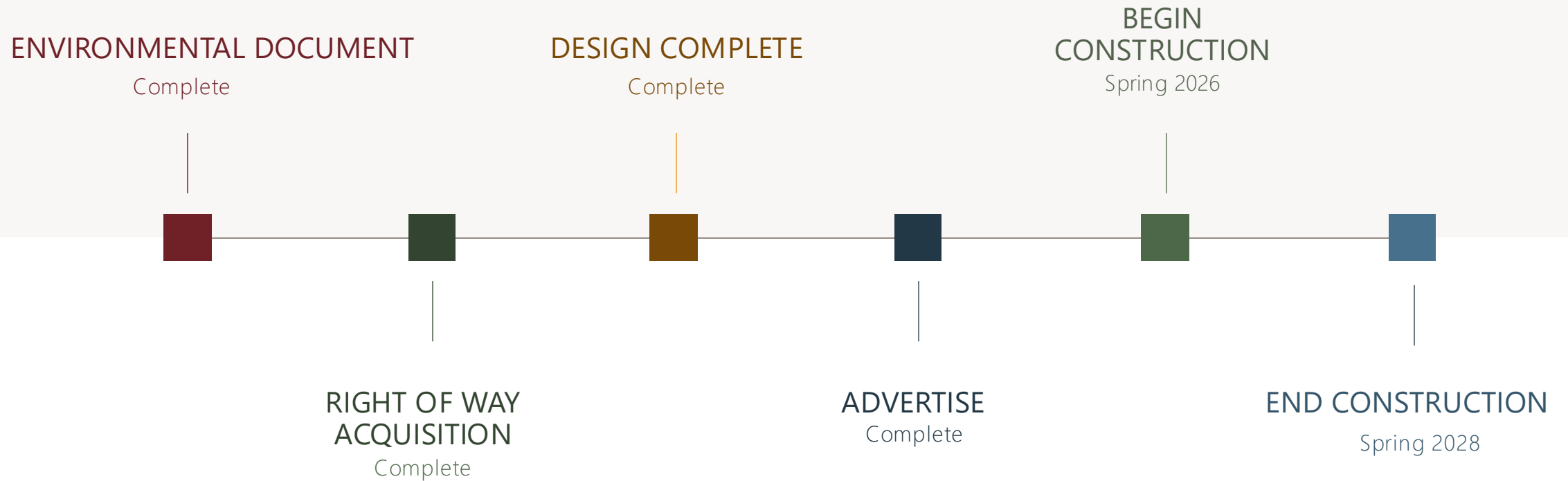
Business owners will be able to maintain access to businesses

Temporary sidewalk closures and pedestrian detours



# PROJECT DELIVERY TIMELINE

## GUADALUPE ADA SIDEWALK AND CURB IMPROVEMENTS





# 05-1M310

## ACTIVE PARTNERSHIP FOR SIGNALIZATION & CAPITAL PREVENTATIVE MAINTENANCE

### LOCATION

Intersection of SR 1/SR 166, east to intersection of SR 1/SR 101

### DESCRIPTION

- Preserve 20+ lane miles of pavement using CAPM strategies
- Add shoulder backing, curb ramps, drainage systems and count stations
- Signalize SR 1/166 and SR 166/Obispo St. Intersections
- Install complete streets elements along SR 166 from SR 1 to Flower Ave

### CURRENT PHASE

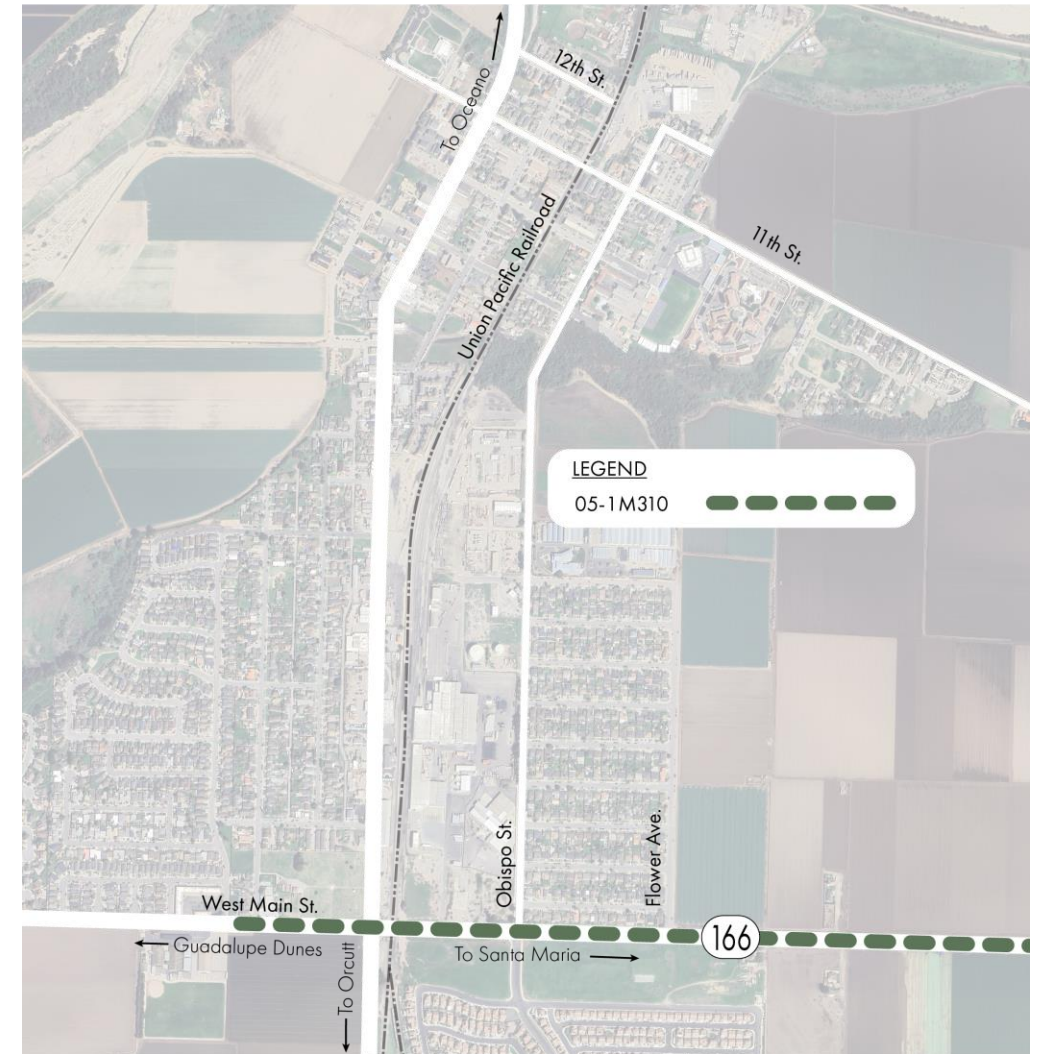
PS&E/RIGHT OF WAY

### CONSTRUCTION DATES

Summer 2028-Winter 2030

### COST

23,900,000

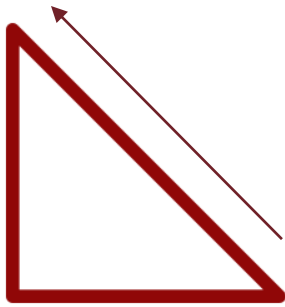


# FEATURES

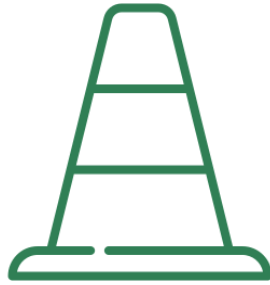
---



BIKE AND  
PEDESTRIAN  
FEATURES



PEDESTRIAN  
RAMPS



PAVEMENT  
REHAB



ROADWAY  
STRIPING



DRAINAGE  
IMPROVEMENTS



INTERSECTION  
SIGNALIZATION

ROADWAY  
IMPROVEMENTS  
ALONG ROUTE 166  
FROM ROUTE 1 TO  
FLOWER AVE.

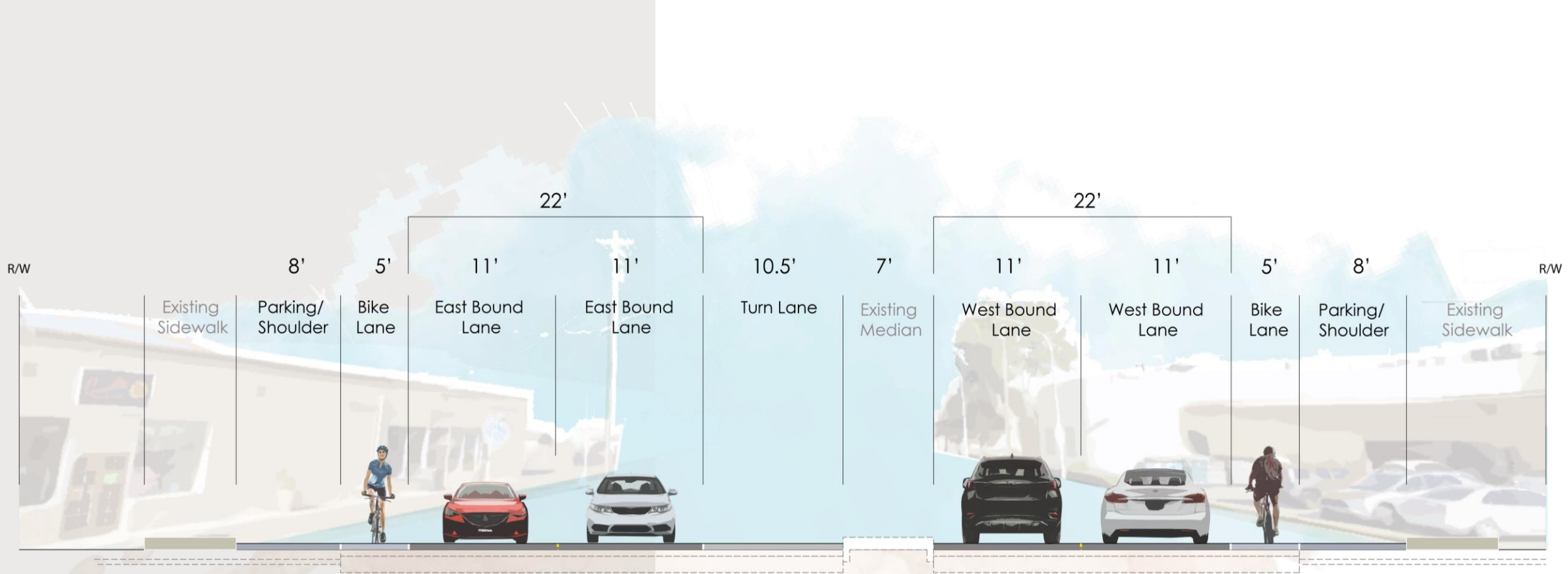






ON ROUTE 166 AT THE  
BLOSSER INTERSECTION LOOKING EAST

---



ROADWAY SECTION ON  
ROUTE 166 LOOKING EAST  
AT BLOSSER  
INTERSECTION



FUTURE VIEW OF  
ROUTE 166 AND  
BLOSSER  
INTERSECTION  
LOOKING EAST

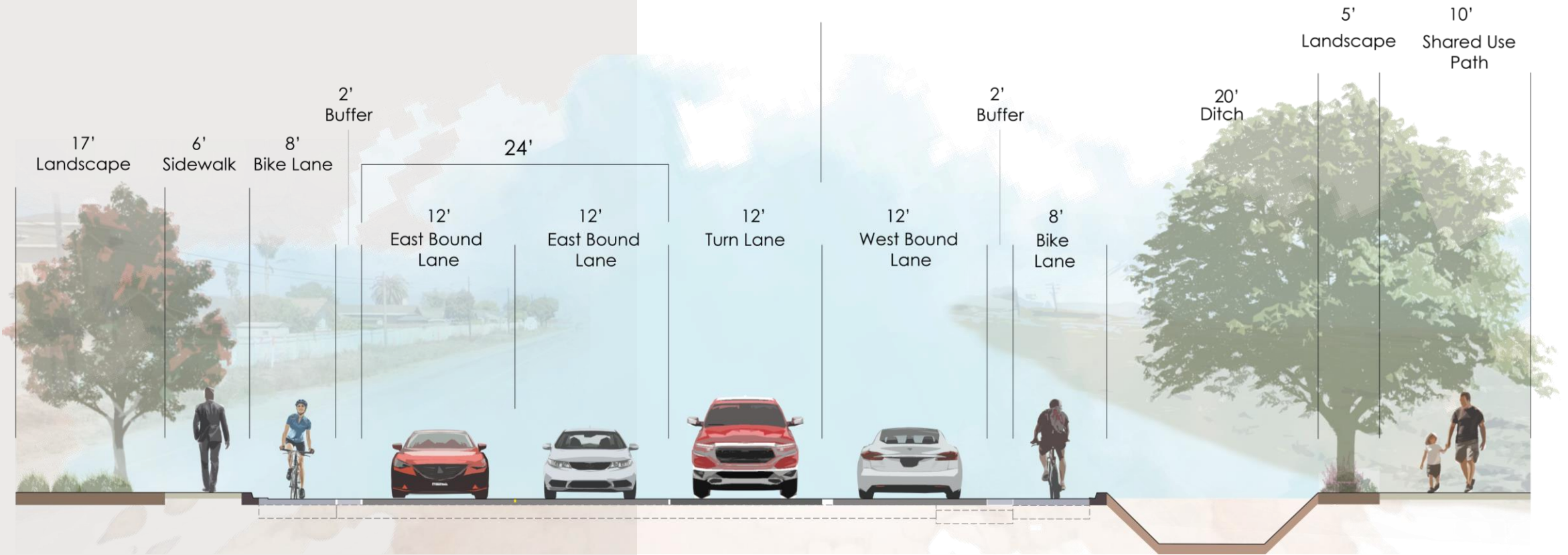






ON ROUTE 166 LOOKING EAST NEAR  
OBISPO ST.

---



ROADWAY SECTION ON ROUTE  
166 LOOKING EAST NEAR  
OBISPO ST.



FUTURE VIEW OF  
ROUTE 166  
LOOKING EAST  
NEAR OBISPO ST.





# CONSTRUCTION IMPACTS

---

## Temporary Disruptions

Night work

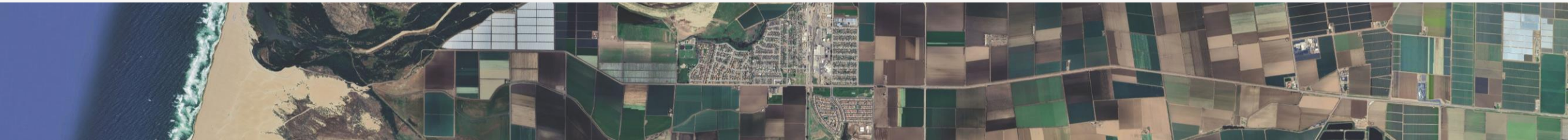
Full time shoulder closures

Possible reversing traffic control at night

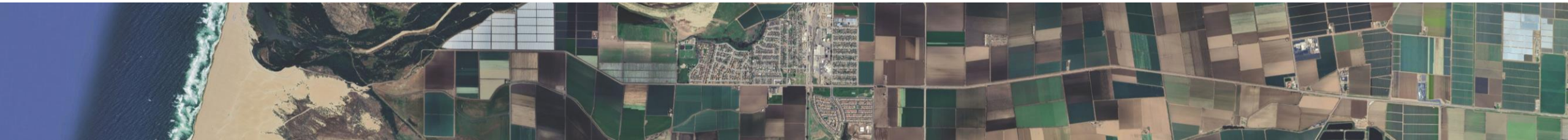
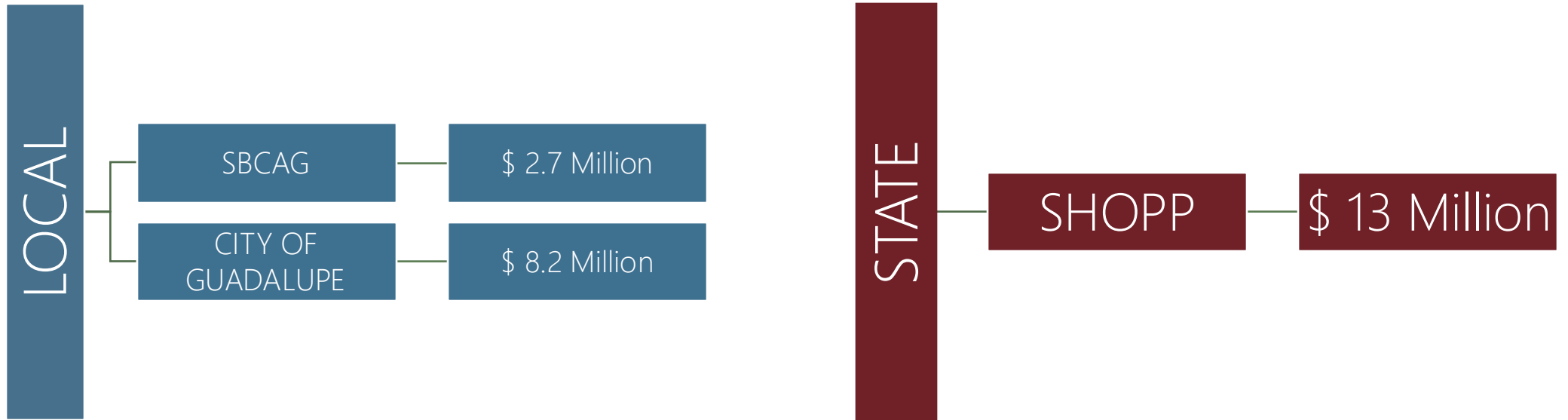
Temporary no parking adjacent to sidewalk work area only

Business owners will be able to maintain access to businesses

Temporary sidewalk closures and pedestrian detours

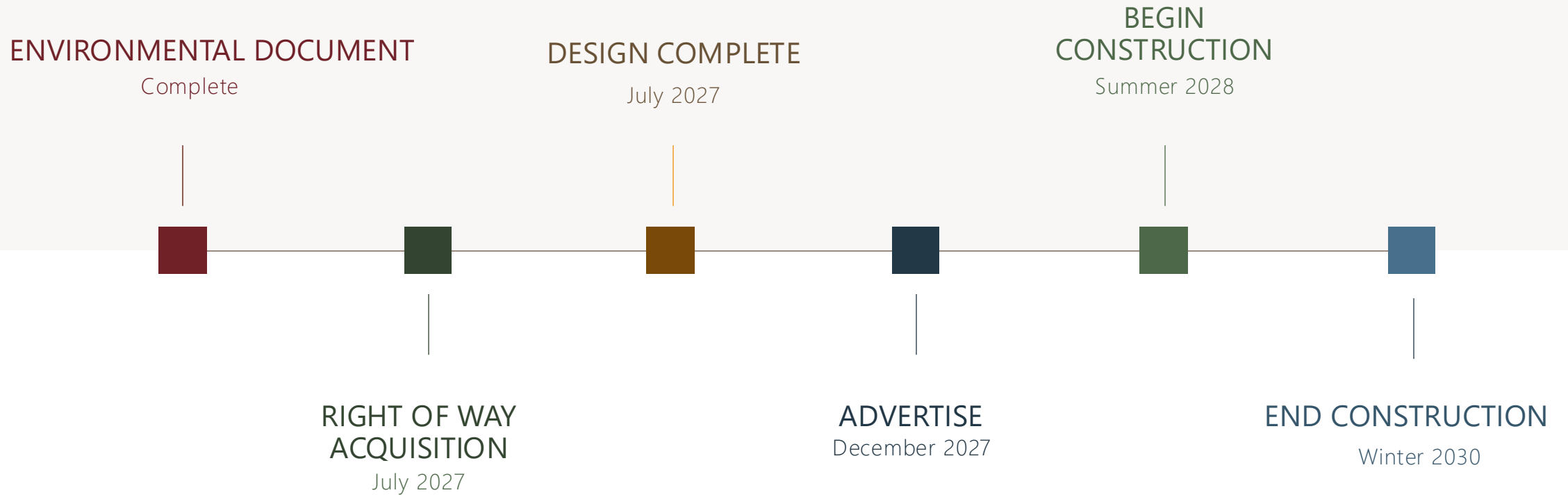


# CAPITAL FUNDING



# PROJECT DELIVERY TIMELINE

ACTIVE PARTNERSHIP FOR SIGNALIZATION & CAPITAL  
PREVENTATIVE MAINTENANCE





# 05-1N870 GUADALUPE PAVEMENT PRESERVATION

## LOCATION

Intersection of SR 1 and SR 166, north to just past 12th St.

## DESCRIPTION

- Preserve four plus miles of pavement using CAPM strategies
- Replace Sign Panels

## CURRENT PHASE

Candidate

## CONSTRUCTION DATES

Spring 2029-Fall 2029

## COST

2,660,000

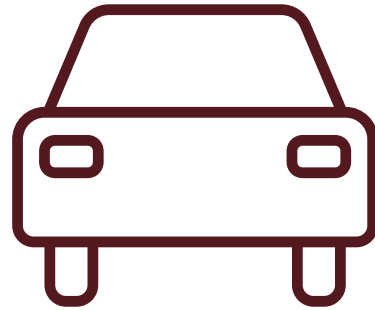


# FEATURES

---



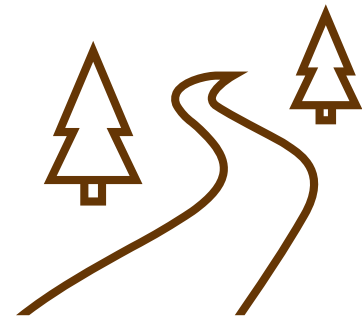
BUFFER BIKE  
LANE



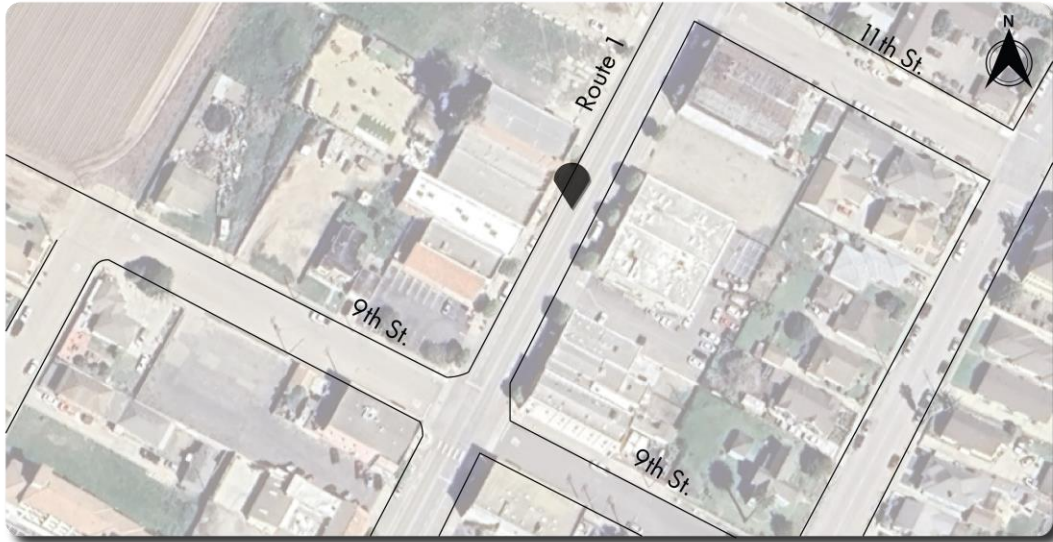
MAINTAIN  
PARKING



ENHANCED  
CROSSWALKS



IMPROVE  
ROADWAY



ON ROUTE 1 LOOKING SOUTH NEAR  
GUADALUPE SOCIAL CLUB

---





Existing



Future

PERSPECTIVE VIEW LOOKING SOUTH  
AT GUADALUPE SOCIAL CLUB

# CONSTRUCTION IMPACTS

---

## Temporary Disruptions

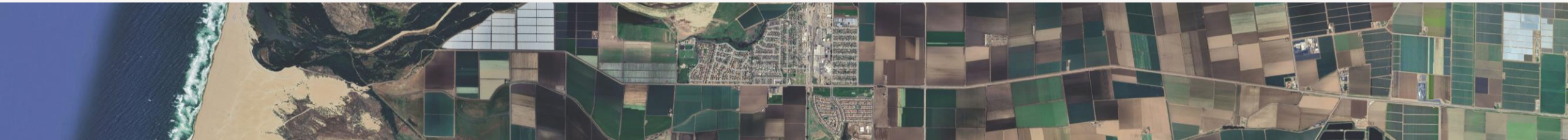
---

Night work

No parking over night

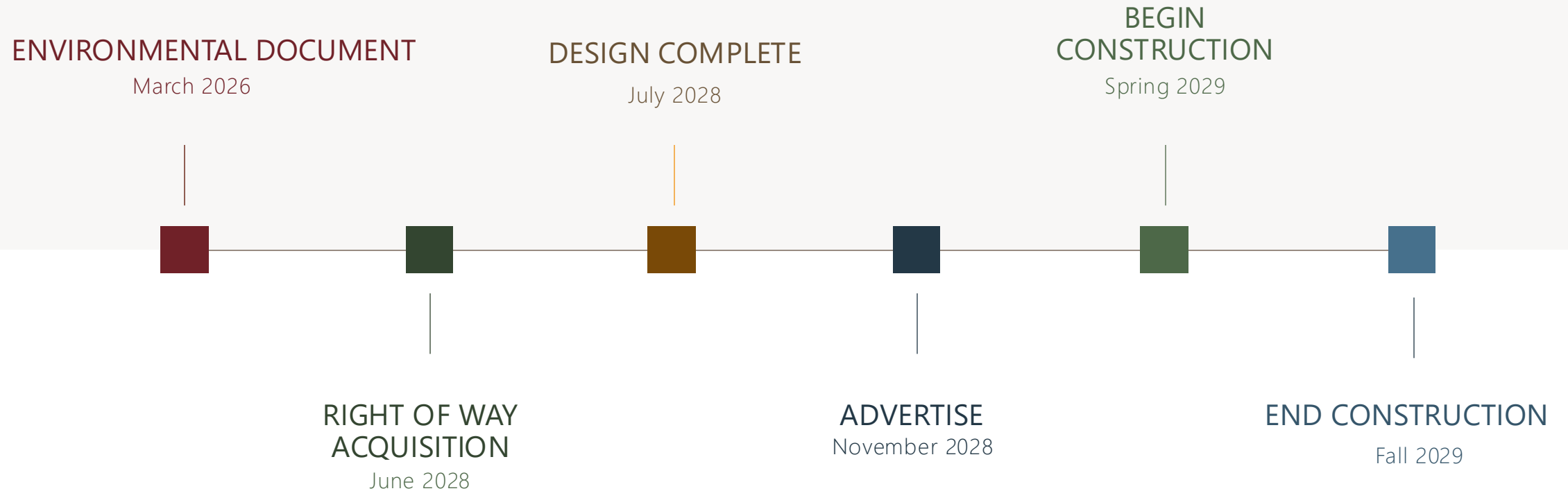
Reversing traffic control

Business owners will be able to maintain access to businesses



# PROJECT DELIVERY TIMELINE

## GUADALUPE PAVEMENT PRESERVATION





# CONSTRUCTION INFORMATION



# LANE CLOSURES

---

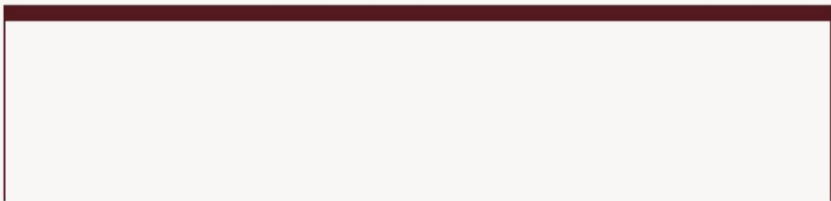
## Where to find this information

- Caltrans Quick Map: <http://quickmap.dot.ca.gov/>
  - **Real-time info** Enter dates and highways to see lane closures or use 'search all' to view closures in a county.
  - **Traffic updates** Check current traffic conditions to plan your routes.
  - **CHP incidents** Get updates on incidents from the California Highway Patrol.
  - **Fire alerts** Stay informed about fire-related incidents affecting travel.
  - **Live webcams** See road conditions through live webcam feeds.
- Caltrans District 5 Planned Lane Closure Website: <https://lcswebreports.dot.ca.gov/searchdistricts?district=5>
- Road information and updates can also be found on Caltrans District 5 Social Media platforms:
  - Twitter: [@CaltransD5](#)
  - Facebook: [Caltrans Central Coast \(District 5\)](#)
  - Instagram/Threads: [Caltrans\\_D5](#)
- California Highway Information Network: 800-427-7623

# GUADALUPE AREA PROJECTS CONSTRUCTION TIMELINE

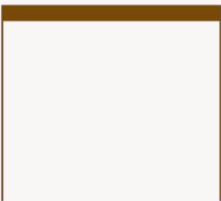
**05-1E030**

Guadalupe ADA Project



**05-1N870**

Guadalupe Pavement  
Preservation



Spring	Summer	Fall	Winter	Spring	Summer	Fall	Winter	Spring	Summer	Fall	Winter	Spring	Summer	Fall	Winter	Spring	Summer	Fall	Winter
2026				2027				2028				2029				2030			

Guadalupe Active Partnership for Signalization  
& Pavement Preservation Santa Maria

**05-1M310**





# RESOURCES

---

## QR Code

---



## Contact

---

Project Manager: Hallie Holden

[Hallie.holden@dot.ca.gov](mailto:Hallie.holden@dot.ca.gov)

(916) 995-1421

District 5 Public Information Office:

[info-d5@dot.ca.gov](mailto:info-d5@dot.ca.gov)

Customer Service Request:

<https://csr.dot.ca.gov/index.php/Msrssubmit>

