

LEGEND:

- Plant Mix 1
- Plant Mix 2
- Plant Mix 3
- Tree Removal Locations
- Jurisdictional Features

PLANT MIX 1:

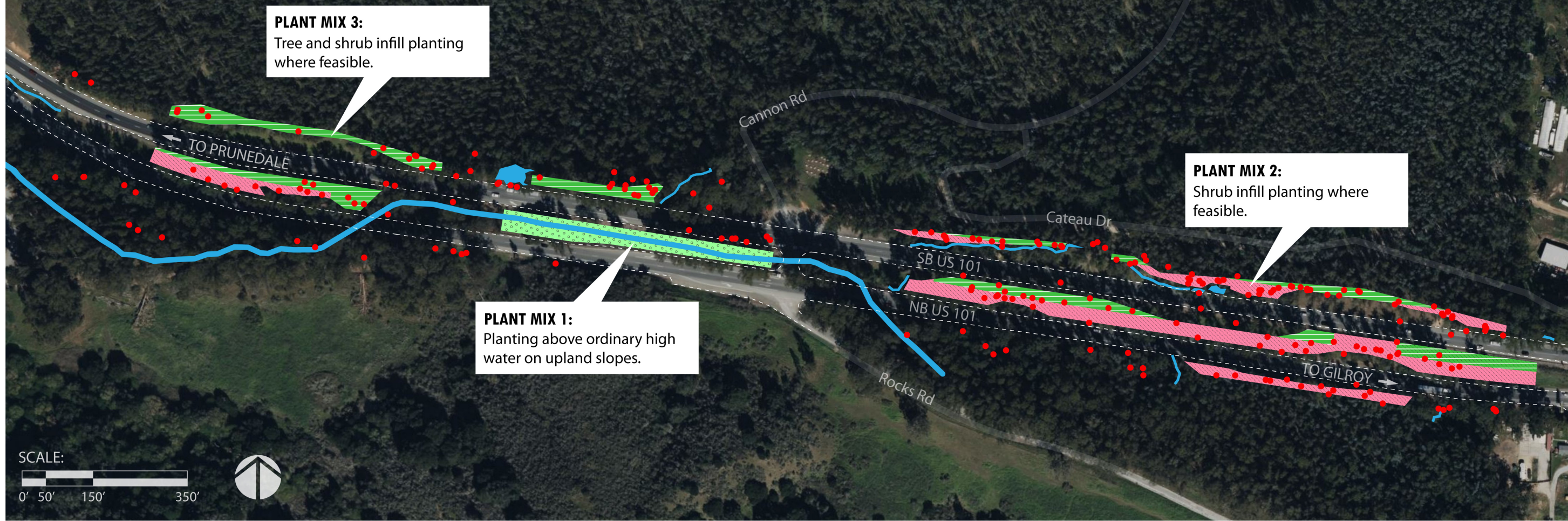
BOTANICAL NAME	COMMON NAME
<i>Acer negundo</i>	Box elder
<i>Cornus sericea</i>	Red osier dogwood
<i>Garrya elliptica</i>	Silktassel
<i>Lonicera involucrata</i>	Twinberry
<i>Salix Lasiolepis</i>	Arroy willow
<i>Quercus agrifolia</i>	Coast live oak

PLANT MIX 2:

BOTANICAL NAME	COMMON NAME
<i>Arctostaphylos hookeri</i>	Hooker's manzanita
<i>Ceanothus cuneatus</i>	Buck brush
<i>Frangula californica</i>	Coffeeberry
<i>Heteromeles arbutifolia</i>	Toyon
<i>Myrica californica</i>	Pacific wax myrtle
<i>Rhus integrifolia</i>	Lemonade berry

PLANT MIX 3:

BOTANICAL NAME	COMMON NAME
<i>Acer negundo</i>	Box elder
<i>Aesculus californica</i>	California buckeye
<i>Arctostaphylos hookeri</i>	Hooker's manzanita
<i>Ceanothus cuneatus</i>	Buck brush
<i>Ceanothus thrysiflorus</i>	Blueblossom ceanothus
<i>Frangula californica</i>	Coffeeberry
<i>Heteromeles arbutifolia</i>	Toyon
<i>Myrica californica</i>	Pacific wax myrtle
<i>Rhus integrifolia</i>	Lemonade berry
<i>Rhus ovata</i>	Sugar bush
<i>Quercus agrifolia</i>	Coast live oak



Tree data provided by Powers Forestry LLC Revised Arborist Report, April 12, 2024.
 Tree data updates provided by Powers Forestry LLC, May 14, 2024.
 Satellite imagery provided by Bing 2024.

Disclaimer:
 Tree data locations depicted are not exact. All trees identified for removal will be field verified prior to removal work. No trees will be removed within jurisdictional features.

PROPOSED PLANTING CONCEPT
 May 20, 2024

Highway 101 Rocks Road Tree Removal Project
 San Benito County - Highway 101 - Post Mile 1.2R/2.1R