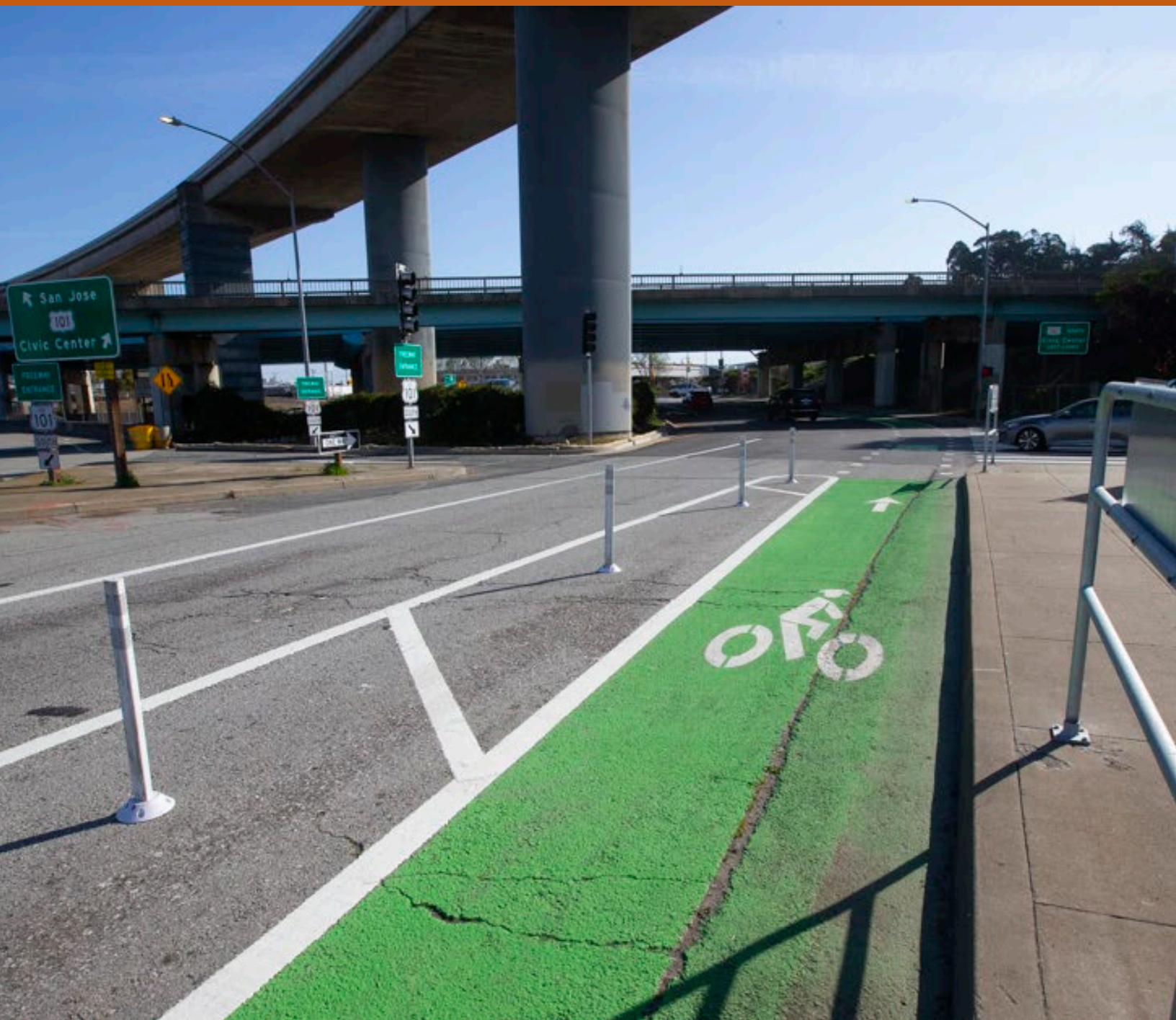


Caltrans Bay Area Bike Plan Update 2025

Appendix B – Location-Based Needs



Num	County	Route	City	Improvement Type	Location	Description	Tier	Mobility Score	Safety Score	Equity Score
Ala-13-C01	Alameda	13	Oakland	Corridor Improvement - Class I	Burdeck Rd - Joaquin Miller Ave	Pave existing path from Burdeck Rd to Joaquin Miller Ave along Hwy 13. Remove slip lane from Hwy 13 NB exit onto Joaquin Miller Rd. Existing informal path is in Caltrans ROW.	Tier	2	0	0
Ala-13-C02	Alameda	13	Oakland	Corridor Improvement - Class I	Hwy 24 - I-580	Provide Class I trail parallel to Hwy 13	Tier 3	3	0	1
Ala-13-NC01	Alameda	13	Berkeley	Corridor Improvement - Class IIB	Domingo Ave - Caldecott Ln	Explore options to install a buffered Class II to improve network connectivity.	Tier	3	3	0
Ala-13-NX01	Alameda	13	Oakland	Interchange improvements - Class II	Joaquin Miller Rd / SR-13	Install Class II bike lane on Joaquin Miller Rd interchange	Tier	2	0	0
Ala-13-NX02	Alameda	13	Oakland	Interchange improvements - Class II	Mountain Blvd / SR-13 interchange	Install Class II bike lane through interchange	Tier	2	0	1
Ala-13-NX03	Alameda	13	Oakland	Interchange improvements - Class II	Calaveras / Mountain Blvd	Class II bikeway on Calaveras Ave/Mountain Blvd at SR-13 interchange	Tier	2	0	1
Ala-13-NX04	Alameda	13	Berkeley	Intersection Improvement at controlled intersection	Claremont Ave	Explore simplifying intersection, removing slip lane and add missing crosswalk. Add green pavement markings to call attention to cyclists.	Tier	2	2	0
Ala-13-NX05	Alameda	13	Berkeley	Intersection improvement at uncontrolled intersection	Otis St	Install a RRFB or HAWK to connect Ashby BART with Milvia St for northbound cyclists	Tier	2	0	1
Ala-13-NX06	Alameda	13	Berkeley	Intersection improvement at uncontrolled intersection	Harper St	Explore installing an RRFB or HAWK or other improvement to cross Ashby Ave.	Tier	2	0	1
Ala-13-X01	Alameda	13	Berkeley	Intersection Improvement at controlled intersection	Adeline St	Continue bikeway through intersection on Adeline St. City of Berkeley is studying improvements.	Tier	3	2	1
Ala-13-X04	Alameda	13	Oakland	Interchange improvements - Class II	Broadway Terrace	Stripe ramps for SR 13 at Broadway Terrace. Consider stop signs and minor civil improvements to reduce free flow of traffic on and off the ramps.	Tier	1	0	0
Ala-13-X05	Alameda	13	Oakland	Interchange improvements - Class II	Moraga Ave	Install Class IV separated bikeway through interchange	Tier	1	0	0
Ala-13-X06	Alameda	13	Oakland	New separated crossing	Park Blvd	Planned Class I path on upper Park Blvd per Oakland Bicycle Plan or Class I on existing structure with a lane reduction	Tier	1	0	0
Ala-13-X07	Alameda	13	Oakland	Interchange improvements - Class II	Redwood Ave	Explore reconstruction of ramp from NB CA 13 and installation of Class IV separated bikeway	Tier	2	0	1
Ala-13-X08	Alameda	13	Oakland	New separated crossing	Carson St	Replace existing ped-only crossing with bike/ped crossing	Tier	2	0	0
Ala-24-C01	Alameda	24	Oakland	Corridor Improvement - Class I	Claremont Ave - Hudson St	Extend Frog Park Path along CA 24 ROW to Forest St	Tier	3	0	1
Ala-24-NC01	Alameda	24	Oakland	Corridor Improvement - Class I	Brookside Ave - Golden Gate Ave	Install Class I to connect Broadway two way Class IV to a Class I to Golden Gate Ave	Tier	3	0	1
Ala-24-NX01	Alameda	24	Oakland	Overcrossing Improvement	Freeway Overpass/ Sr 24	Install Class IIB buffered bike lanes on Fwy Overpass between Broadway and Caldecott Ln	Tier	1	0	0
Ala-24-NX02	Alameda	24	Oakland	Undercrossing Improvement	W MacArthur Blvd	Install Class IV at undercrossing	Tier 1	3	0	3
Ala-24-NX03	Alameda	24	Oakland	Undercrossing Improvement	Claremont Ave	Install Class II bike lanes on Claremont Ave undercrossing at SR-24	Tier	2	0	0
Ala-24-NX04	Alameda	24	Oakland	Undercrossing Improvement	Shattuck	Install Class IIB buffered bike lanes on Shattuck Ave undercrossing at SR-24	Tier	2	2	1
Ala-24-NX05	Alameda	24	Oakland	Undercrossing Improvement	55th St	Install Class II bike lanes on 55th St undercrossing at SR-24	Tier	2	0	1
Ala-24-NX06	Alameda	24	Oakland	Undercrossing Improvement	40th St	Install Class IV bikeway at 40th St undercrossing at SR-24	Tier	3	0	3
Ala-24-NX07	Alameda	24	Oakland	Undercrossing Improvement	Forest St	Install Class III neighborhood bike route or Class IV separated bikeway at undercrossing	Tier	2	0	0
Ala-24-NX08	Alameda	24	Oakland	New separated crossing	Tunnel Rd and Lake Temescal Park	Class I connection to Lake Temescal Park over SR-24 to connect to Tunnel Rd	Tier	2	0	0

Num	County	Route	City	Improvement Type	Location	Description	Tier	Mobility Score	Safety Score	Equity Score
Ala-24-X01	Alameda	24	Oakland	Interchange improvements - Class IV	52nd St	Interchange improvements on 52nd, install Class IV bikeway	Tier	3	3	3
Ala-24-X02	Alameda	24	Oakland	Interchange improvements - Class IV	Telegraph	Interchange improvements on Telegraph Ave, install Class IV bikeway	Tier	2	0	1
Ala-61-C01	Alameda	61	Alameda	Corridor Improvement- Class IV	Webster St - Encinal Ave	Class IV from Webster St to Encinal Ave as proposed in Alameda's Active Transportation Plan	Tier	3	2	1
Ala-61-C02	Alameda	61	Oakland	Corridor Improvement- Class I or IV	Swan Way - Airport Access Rd	Install Class I on northside of SR 61 from Swan Way to Shoreline Center on Doolittle Drive to connect with the existing Bay Trail or Class IV as described in Oakland's Bike Plan (2019)	Tier	2	1	3
Ala-61-C03	Alameda	61	Oakland	Corridor Improvement- Class I	Harbor Bay Pkwy - MLK Shoreline Center	Doolittle Drive Bay Trail Gap Closure - Provide Class I trail from Harbor Bay Parkway to Swan Way, potential protected intersection improvements	Tier	3	0	3
Ala-61-NC01	Alameda	61	Alameda	Corridor Improvement- Class II	Broadway to Fernside	Install a Class II bikeway as proposed in Alameda Active Transportation Plan	Tier	3	0	1
Ala-61-NC02	Alameda	61	Alameda	Corridor Improvement- Class I or IV	Island Dr - Harbor Bay Pkwy	Install a Class IV or Class I	Tier 2	2	0	3
Ala-61-NC03	Alameda	61	San Leandro	Corridor Improvement- Class IV	Airport Dr - Davis St	Install Class IV to connect with Bay Trail	Tier 1	3	0	3
Ala-61-NX01	Alameda	61	Oakland	Intersection Improvement at controlled intersection	Doolittle / Airport Dr	City of Oakland Bike Plan priority intersection improvement. Consider installing a protected intersection.	Tier	2	1	3
Ala-61-NX02	Alameda	61	Oakland	Intersection Improvement at controlled intersection	Doolittle / Airport Access Rd	City of Oakland Bike Plan priority intersection improvement. Consider installing a protected intersection.	Tier	2	0	3
Ala-61-X01	Alameda	61	Alameda	Intersection Improvement at controlled intersection	Broadway Ave/Encinal Ave	Explore bicycle improvements to intersection and improve left turn from Broadway to Encinal	Tier	3	0	1
Ala-80-NC02	Alameda	80	Emeryville	Corridor Improvement- Class IV	Bay St- Ikea Parking Lot Entrance (Bay Trail Connection)	Provide Class IV bike lanes adjacent to I-80 and Shellmound St between Bay St and Ikea parking Lot	Tier	3	0	3
Ala-80-NC03	Alameda	80	Emeryville	Corridor Improvement- Class I	64th - 65th St	Provide Shared-Use Path to connect to Ashby Overcrossing adjacent to I-80.	Tier	3	0	2
Ala-80-X02	Alameda	80	Emeryville	Interchange improvements - Class I	Powell St	Provide improved striping, signage and a potential bicycle signal for crossings of the I-80 on and off-ramps with Powell St/the Bay Trail	Tier	3	3	2
Ala-80-X03	Alameda	80	Berkeley	Interchange improvements - Class I	Ashby Rd (Hwy 13)	Alameda CTC conducting ongoing study of full interchange reconstruction to ensure continuity of bike facilities from Bay Trail to local on-street bicycle network east of I-80	Tier	2	3	3
Ala-84-C01	Alameda	84	Fremont	Corridor Improvement- Class IV	I-880 - Mission Blvd	Explore upgrading bicycle facilities from Class IV from Class II buffered bike lanes.	Tier	3	1	1
Ala-84-C02	Alameda	84	Livermore	Corridor Improvement- Class I	Airway Blvd - W Jack London Blvd	Provide Class I path adjacent to Hwy 84 between Airway Blvd and W Jack London Blvd	Tier	2	2	0
Ala-84-C04	Alameda	84	Livermore	Corridor Improvement- Class I	Hwy 84 - I-580	Provide Class I path parallel to Airway Blvd from Hwy 84 to I-580	Tier	2	1	0
Ala-84-C05	Alameda	84	Fremont	Corridor Improvement- Class I	Marshlands Rd - Hwy 84 path	Provide Class I along Marshlands Rd parallel to Hwy 84. Marshlands Rd Caltrans ROW where it directly parallels Hwy 84.	Tier	2	0	1
Ala-84-NC01	Alameda	84	Unincorporated	Corridor Improvement- Class I	Niles Canyon	Provide Class I shared use path along Niles Canyon	Tier	2	2	1
Ala-84-NX01	Alameda	84	Livermore	Intersection Improvement at controlled intersection	E Jack London Blvd	Replace curb ramp with a wider ramp. Curb ramps at trail crossings should be the width of the trail, per the HDM section 1003.1 Add LPI, no right on red, reduced curb radius and a median refuge island.	Tier	2	3	0

Num	County	Route	City	Improvement Type	Location	Description	Tier	Mobility Score	Safety Score	Equity Score
Ala-84-NX02	Alameda	84	Livermore	Intersection Improvement at controlled intersection	Stanley Blvd	Improve trail crossing. Replace curb ramp with a wider ramp. Consider other crossing improvements such as installing a median refuge island, and narrowing crossing distance.	Tier	2	3	0
Ala-84-NX03	Alameda	84	Livermore	Intersection Improvement at controlled intersection	Concannon Blvd	Redo curb ramps to be as wide as the path and be directional to the path of bike travel, install blank out no right on red signs. See N Mathilda Ave/ W Moffett Park Dr for Class I crossing an arterial.	Tier	2	0	0
Ala-84-NX04	Alameda	84	Livermore	Intersection Improvement at controlled intersection	E Vineyard Ave	Redo curb ramps to be as wide as the path and be directional with the path of travel, ensure bike ramps account for all bike turning movements, install blank out no right on red signs. See N Mathilda Ave/ W Moffett Park Dr for Class I crossing an arterial	Tier	1	0	0
Ala-84-NX05	Alameda	84	Livermore	New separated crossing	Arroyo Mocho Trail	Provide separated bike/ped crossing over Isabel Ave to connect Arroyo Mocho Trail with the Iron Horse Trail	Tier	2	2	0
Ala-84-X01	Alameda	84	Newark	Interchange improvements - Class IV	Thorton Ave	Install bicycle interchange improvements, such as square up ramps, install Class IV bikeways, add signage and striping to mark bicycle conflict points and remove free right turns.	Tier	2	3	1
Ala-84-X02	Alameda	84	Fremont	Interchange improvements - Class IV	Newark Blvd	Install bicycle interchange improvements, such as square up ramps, install Class IV bikeways, add signage and striping to mark bicycle conflict points and remove free right turns.	Tier	2	2	1
Ala-92-C01	Alameda	92	Hayward	Corridor Improvement- Class I	Whitesell St	Breakwater Avenue Bay Trail connection to Hwy 92 Bicycle/Pedestrian overpass bridge. Closes the last gap in the Bay Trail to the Hwy 92 Bicycle/Pedestrian overcrossing and removes the final barrier to crossing the Hwy 92 corridor.	Tier	2	0	2
Ala-92-NC01	Alameda	92	Hayward	Corridor Improvement- Class IV	Jackson St	Provide a Class IV separated bikeway on Jackson St from Mission Blvd to Santa Clara St	Tier	3	0	3
Ala-92-NX01	Alameda	92	Hayward	Intersection Improvement at controlled intersection	Santa Clara St	Explore adding a protected intersection. Class IV bikeways are proposed on Jackson St and Santa Clara St. Protected intersections maintain a physical separation within the intersection to define the turning paths of motor vehicles & slow vehicle speeds.	Tier	3	0	3
Ala-92-NX02	Alameda	92	Hayward	Interchange improvements - Class IV	Heserian Blvd/ 92	Install bicycle interchange improvements, such as square up ramps, install Class IV bikeways, add signage and striping to mark bicycle conflict points and remove free right turns.	Tier	3	0	3
Ala-92-X01	Alameda	92	Hayward	Interchange improvements - Class IV	Industrial Blvd	Install bicycle interchange improvements, such as square up ramps, install Class IV bikeways, add signage and striping to mark bicycle conflict points and remove free right turns.	Tier	1	0	2
Ala-112-C01	Alameda	112	San Leandro	Corridor Improvement- Class IV	Doolittle Dr - E. 14th St	Provide a Class IV separated bikeway on Davis St (Hwy 61) from Doolittle Dr to E 14th St (Hwy 185)	Tier	3	2	3
Ala-123-C02	Alameda	123	Emeryville/ Oakland	Corridor Improvement- Class IV	Heinz Ave - 35th Ave	Provide Class IV bikeway on San Pablo Ave from 35th Ave in Oakland to Heinz Ave in Berkeley. Project underway, led by Alameda CTC.	Tier	3	3	3
Ala-123-NX01	Alameda	123	Emeryville	Intersection improvement at controlled intersection	San Pablo Ave/ Adeline	Intersection included in the Alameda CTC San Pablo Avenue Corridor Project, currently in the design process. Study for linear bikeway west on MacArthur Boulevard to connect people biking to the intersection of Emery St and Peralta St.	Tier	3	2	3
Ala-123-NX02	Alameda	123	Albany	Intersection improvement at controlled intersection	Brighton Ave	Short Cycle track from Brighton Ave to Clay St with intersection improvements in San Pablo Ave Corridor Project Draft	Tier	3	0	1

Num	County	Route	City	Improvement Type	Location	Description	Tier	Mobility Score	Safety Score	Equity Score
Ala-123-NX03	Alameda	123	Albany	Intersection improvement at controlled intersection	Washington Ave	Class IV bicycle connection between E and W Washington Ave accommodated by signal phase modification in San Pablo Ave Corridor Project Draft	Tier	3	1	1
Ala-123-X01	Alameda	123	Berkeley	Intersection improvement at controlled intersection	Gilman St	Explore protected intersection improvements or lane continuation for Gilman Street	Tier	2	3	3
Ala-123-X02	Alameda	123	Berkeley	Intersection improvement at controlled intersection	Cedar St/Hopkins St	City of Berkeley to conduct complete streets corridor study on Hopkins between 9th and Milvia Street putting cycletrack on Cedar/Hopkins through Complete Streets Corridor Study. Interim treatment planned.	Tier	3	3	1
Ala-123-X03	Alameda	123	Berkeley	Intersection Improvement at controlled intersection	Addison St	Proposed City of Berkeley Bicycle Plan (2017) project for Cycletrack crossing of San Pablo Avenue to connect Addison Street	Tier	3	2	3
Ala-123-X04	Alameda	123	Berkeley	Intersection Improvement at controlled intersection	Allston Way	Explore improved crossing for bicyclists on Allston Way bicycle boulevard	Tier	3	3	3
Ala-123-X05	Alameda	123	Berkeley	Intersection Improvement at uncontrolled intersection	Channing	Proposed City of Berkeley Bicycle Plan (2017) project for Pedestrian Hybrid Beacon across San Pablo to connect Channing	Tier	3	2	3
Ala-123-X06	Alameda	123	Berkeley	Intersection Improvement at uncontrolled intersection	Parker St	Proposed City of Berkeley Bicycle Plan (2017) project for Pedestrian Hybrid Beacon across San Pablo to connect Parker Street	Tier	2	3	3
Ala-123-X07	Alameda	123	Berkeley	Intersection Improvement at uncontrolled intersection	Heinz St - Oregon St	City of Berkeley Bike Plan (2017) proposes two-way cycletrack connector between Heinz and Oregon Street	Tier	2	0	3
Ala-123-X08	Alameda	123	Berkeley	Intersection Improvement at controlled intersection	Ashby Ave	High demand for crossing at Ashby Avenue from Caltrans District 4 Bicycle Plan Public Input Survey	Tier	2	3	3
Ala-123-X09	Alameda	123	Berkeley, Oakland	Intersection Improvement at controlled intersection	65th St	Explore improved bicycle crossing for 65th Street across San Pablo.	Tier	3	1	2
Ala-123-X10	Alameda	123	Oakland, Emeryville	Intersection Improvement at controlled intersection	53rd St	Add LPI, protected intersection with curb extensions, consider dashed green pavement markings across San Pablo. Intersection included in the Alameda CTC San Pablo Avenue Corridor Project.	Tier	3	2	3
Ala-123-X11	Alameda	123	Emeryville	Intersection Improvement at controlled intersection	40th St	Provide bicycle improvements to intersection of 40th Street and San Pablo with enhanced markings, bike boxes, and improved bicycle detection. Intersection included in the Alameda CTC San Pablo Avenue Corridor Project, currently in the design process.	Tier	3	2	3
Ala-123-X12	Alameda	123	Albany	Intersection Improvement at controlled intersection	Marin Ave	Explore continuing bike lanes through intersection to connect Marin Avenue	Tier	3	2	1
Ala-123-X14	Alameda	123	Berkeley	Intersection improvement at uncontrolled intersection	Carmelia	Pedestrian hybrid beacon for planned bike blvd on Carmelia as proposed in Berkeley Bicycle Plan (2017)	Tier	2	0	3
Ala-123-X15	Alameda	123	Oakland	Intersection Improvement at controlled intersection	63rd St	Provide improved crossing of San Pablo at dog legged 63rd St intersection, potentially implementing a short stretch of 2-way cycletrack on one side to facilitate turns.	Tier	3	0	2
Ala-185-C01	Alameda	185	Oakland, San Leandro	Corridor Improvement - Class II	81st Ave - Bristol Blvd	Eplore options to provide Class II or Class IV bikeway along International (Hwy 185). Integrate with existing Bus Rapid Transit and motor vehicle safety improvements.	Tier	3	3	3

Num	County	Route	City	Improvement Type	Location	Description	Tier	Mobility Score	Safety Score	Equity Score
Ala-185-C02	Alameda	185	San Leandro	Corridor Improvement- Class IV	Davis St - Fairmont Dr	Provide a Class IV separated bikeway on E 14th (Hwy 185) from Davis St - Fairmont Dr. Portions along East Bay Greenway. ACTC led project.	Tier	3	2	3
Ala-185-NC01	Alameda	185	Oakland	Corridor Improvement- Class IV	54th Ave - 81st Ave	Explore options to upgrade existing Class II to Class IV or Class IIB. Install green conflict markings, install intersection improvements.	Tier	3	3	3
Ala-185-NC02	Alameda	185	Hayward	Corridor Improvement- Class IV	E Lewling Blvd - Jackson St/Foothill Blvd	Provide a Class IV separated bikeway on Mission Blvd (SR 185) from E Lewling Blvd to Jackson St/Foothill Blvd. Project underway led by Alameda CTC.	Tier	3	0	3
Ala-185-NX01	Alameda	185	Oakland	Intersection improvement at controlled intersection	90th Ave	Priority arterial crossing of International Blvd. Consider installing a short two-way connector to facilitate bicycle movement across SR 185	Tier	3	0	3
Ala-185-NX02	Alameda	185	Oakland	Intersection improvement at controlled intersection	73rd Ave	Priority arterial crossing of International Blvd. Explore installing a protected intersection and other intersection improvements.	Tier	2	3	3
Ala-185-NX03	Alameda	185	Oakland	Intersection improvement at controlled intersection	105th Ave	Priority arterial crossing of International Blvd. Install bicycle intersection 1 improvements.	Tier	2	1	3
Ala-185-NX04	Alameda	185	Oakland	Intersection improvement at controlled intersection	62nd Ave	Priority arterial crossing of International Blvd. Install bicycle intersection 1 improvements.	Tier	2	1	3
Ala-185-NX05	Alameda	185	Oakland	Intersection improvement at controlled intersection	69th Ave	Priority arterial crossing of International Blvd. Install bicycle intersection 1 improvements.	Tier	2	1	3
Ala-185-NX06	Alameda	185	Hayward	Intersection Improvement at controlled intersection	Mattox Rd	Install protected intersection. Priority intersection improvements to be consistent with San Lorenzo Creekway Master Plan. Connect with proposed San Lorenzo Creek Trail.	Tier	2	0	3
Ala-238-C01	Alameda	238	Fremont	Corridor Improvement- Class IV	I-680 - King Ave (Fremont border)	Provide Class IV separated bikeway as proposed in Fremont Bike Plan, Caltrans SHOPP project to install interim project.	Tier	3	2	1
Ala-238-NC01	Alameda	238	Union City	Corridor Improvement- Class I and IIB	King Ave - Blanche St	Install Class I shared-use path and Class II buffered bike lanes. See concept designs in Union City Bike Ped Master Plan appendix H.	Tier	3	2	2
Ala-238-NC02	Alameda	238	Unincorporated	Corridor Improvement- Class IV	Foothill Blvd	Provide a Class IV separated bikeway on Foothill Blvd from Castro Valley Blvd to Apple Ave	Tier	3	3	3
Ala-238-NC03	Alameda	238	Castro Valley	Corridor Improvement- Class IV	Castro Valley Blvd	Provide a Class IV separated bikeway on Castro Valley Blvd from Stanton Ave to Foothill Blvd	Tier	3	2	3
Ala-238-NX01	Alameda	238	Fremont	Spot improvement	south of Stevenson Blvd	Add ramp from bike lane to sidewalk, widen sidewalk to a Class I where possible at railroad undercrossing. Improvement identified through public comment.	Tier	2	0	0
Ala-238-X01	Alameda	238	San Leandro, Ashland	Interchange improvements - Class IV	Hesperian Blvd	Corridor study in San Leandro Bicycle and Pedestrian Master Plan (2018). Install Class IV separated bikeway	Tier	3	0	3
Ala-238-X02	Alameda	238	Union City	Intersection Improvement at uncontrolled intersection	Dry Creek (Whipple Rd)	Provide beacon or other improved crossing of Mission Rd at Dry Creek. Identified in Union City Bike/Ped Master Plan for future study.	Tier	2	0	2
Ala-260-NC01	Alameda	260	Alameda	Corridor Improvement- Class I	6th St - Atlantic Ave	Reopening of shared use path in Webster Tunnel with Class I paths on approach in Alameda on Webster Street	Tier	3	0	3
Ala-260-X01	Alameda	260	Oakland, Alameda	New separated crossing	Embarcadero - Marina Village Pkwy	New estuary overcrossing that would connect Alameda and Oakland, as studied in the City of Alameda Estuary Crossing Study Final Feasibility Study Report (2009)	Tier	3	0	3
Ala-262-C01	Alameda	262	Fremont	Corridor Improvement- Class IV	I-680 - Warm Springs Blvd	Proposed Class IV separated bikeway on Warm Springs Blvd to I-680 and continuing on Mission Blvd	Tier	3	0	1
Ala-580-NC01	Alameda	580	Dublin	Corridor Improvement- Class I	Iron Horse Trail - Arnold Rd	Install Class I along Altamirano Ave	Tier 3	3	0	1

Num	County	Route	City	Improvement Type	Location	Description	Tier	Mobility Score	Safety Score	Equity Score
Ala-580-NC02	Alameda	580	Albany	Corridor Improvement- Class I	Washington Ave Crescent Park	Install Class I path adjacent to I-580 near Pierce St that connects Cerrito Creek and Washington Ave	Tier	3	0	1
Ala-580-NC03	Alameda	580	Castro Valley, Pleasanton	Corridor Improvement- Class I or IV	Castro Valley Blvd - Foothill Rd	Install Class I or IV along I-580 from Castro Valley to Pleasanton. On Alameda CTC's Countywide Bikeways Network.	Tier	2	0	0
Ala-580-NX01	Alameda	580	Pleasanton	Interchange improvements - Class IV	Hopyard Rd	Interchange improvement to modernize and improve multimodal access and traffic safety, lessening the barriers to biking	Tier	2	2	1
Ala-580-NX02	Alameda	580	Dublin, Pleasanton	Interchange improvements - Class I or Class IV	Hacienda Dr	Interchange improvement to modernize and improve multimodal access and traffic safety, lessening the barriers to biking	Tier	1	2	1
Ala-580-NX03	Alameda	580	Albany	New separated crossing	Codornices Creek Path	Add new ped/bike overcrossing to connect Class I paths	Tier	2	3	3
Ala-580-NX03	Alameda	580	Oakland	Undercrossing improvement	Broadway	Upgrade Class II to a Class IV protected bikeways on Broadway undercrossing at I-580	Tier	2	1	3
Ala-580-NX04	Alameda	580	Oakland	Undercrossing improvement	Piedmont Ave	Install Class IIB buffered bike lanes on Piedmont Ave undercrossing at I-580	Tier	2	0	3
Ala-580-NX05	Alameda	580	Oakland	Interchange improvements - Class IIB	Harrison St	Upgrade existing bike lane to a Class IV bikeway at I-580 interchange	Tier	2	0	3
Ala-580-NX06	Alameda	580	Oakland	Undercrossing Improvement	Mandela Pkwy	Install Class IIB buffered bike lanes on Mandela beneath I-580	Tier	2	0	3
Ala-580-NX07	Alameda	580	Oakland	Undercrossing improvement	Peralta St	Install Class IIB buffered bike lanes on Peralta St beneath I-580	Tier	2	0	3
Ala-580-NX08	Alameda	580	Oakland	Overcrossing improvement	Lake Park Ave	Install Class IV bike lanes on Lake Park Ave overcrossing of I-580	Tier	3	0	1
Ala-580-NX09	Alameda	580	Oakland	Interchange improvements - Class IV	Lakeshore Ave	Install Class IV bike lanes on Lakeshore Ave beneath I-580	Tier	3	0	1
Ala-580-NX10	Alameda	580	Oakland	Undercrossing Improvement	Adeline St	Install Class IV bike lanes on Adeline St beneath I-580	Tier	2	0	3
Ala-580-NX11	Alameda	580	Oakland	Undercrossing improvement	West St	Install Class IV bikeway on West St undercrossing of I-580	Tier	2	1	3
Ala-580-NX13	Alameda	580	Oakland	Interchange improvements - Class IIB	High St	Install Class IV bikeway on High St through interchange	Tier	2	0	3
Ala-580-NX14	Alameda	580	Oakland	Undercrossing improvement	Fruitvale Ave	Install Class IIB buffered bike lanes on Fruitvale Ave undercrossing at I-580	Tier	3	0	3
Ala-580-NX15	Alameda	580	Oakland	Overcrossing Improvement	Chetwood St	Install Class IV bikeway on Chetwood St overcrossing at I-580	Tier	2	0	1
Ala-580-NX16	Alameda	580	Oakland	Undercrossing improvements	Beach St	Add Class III bicycle boulevard on Beach St and Wood St (beneath I-80)	Tier	2	0	3
Ala-580-NX17	Alameda	580	Livermore	Undercrossing trail improvements	Portola Ave	Undercrossing trail Improvements	Tier 2	3	0	1
Ala-580-NX18	Alameda	580	Livermore	Undercrossing improvements	Greenville Rd	Undercrossing improvements, consider widening bikeway to provide a Class IIB	Tier	1	0	1
Ala-580-NX19	Alameda	580	Oakland	Undercrossing improvement	14th Ave	Install Class IV at undercrossing	Tier 1	3	0	3
Ala-580-NX20	Alameda	580	Livermore	Interchange Improvements - Class IV	Isabel Ave	Provide separated bikeways, conflict striping, and signage on Isabel Ave across I-580	Tier	1	0	0
Ala-580-NX21	Alameda	580	Livermore	New separated crossing	South Bay Aqueduct Trail	Provide a separated crossing of I-580 to connect to the proposed South Bay Aqueduct Trail as detailed in the City of Livermore Bike, Ped and Trails Plan	Tier	1	0	0
Ala-580-NX22	Alameda	580	Livermore	New separated crossing	Arroyo Las Positas Trail	Provide a separated crossing of I-580 to connect to the Arroyo Las Positas Trail	Tier	1	0	1
Ala-580-X01	Alameda	580	Oakland	Interchange improvements	Oakland Ave	Class IIB buffered bike lanes on Oakland Ave undercrossing at I-580	Tier	2	0	1
Ala-580-X02	Alameda	580	Oakland	Interchange improvements - Class IV	Grand Ave	Class IV separated bikeway on Grand Avenue through interchange	Tier	3	0	1
Ala-580-X04	Alameda	580	San Leandro	Interchange improvements - Class IV	Estudillo Ave	Explore installing Class IV at undercrossing	Tier 3	2	0	0
Ala-580-X05	Alameda	580	San Leandro	Interchange improvements - Class II	Grand Ave	Explore interchange improvements, such as tightening curb radii and removing slip lanes	Tier	1	0	3
Ala-580-X06	Alameda	580	Castro Valley	Interchange improvements - Class IV	Castro Valley Blvd	Reconstruct and square up ramps. Provide Class IV through complex interchange, add green striping to conflict zones, and add partially separated bikeway at floating bike lanes.	Tier	3	0	3

Num	County	Route	City	Improvement Type	Location	Description	Tier	Mobility Score	Safety Score	Equity Score
Ala-580-X07	Alameda	580	Castro Valley	Interchange improvements - Class IV	Redwood Rd	Install Class IV and Interchange improvements as outlined in Alameda County Unincorporated Area Bike Plan	Tier	3	3	2
Ala-580-X08	Alameda	580	Castro Valley, Fairview	Interchange improvements - Class IV	Grove Way	Install Class IV bikeway through interchange and undercrossing. Stripe green pavement markings through conflict zones. Potentially adjust ramps to reduce curb radii. Supports Alameda County Unincorporated Area bike plan	Tier	2	0	2
Ala-580-X09	Alameda	580	Pleasanton	New separated crossing	Tassajara Creek	Explore separated crossing as proposed in Dublin Bicycle and Pedestrian Master Plan and Pleasanton Pedestrian and Bicycle Master Plan	Tier	2	0	1
Ala-580-X10	Alameda	580	Dublin, Pleasanton	Interchange Improvements - Class I or IV	Santa Rita Rd	Interchange improvement to modernize and improve multimodal access and traffic safety, lessening the barriers to biking. Explore potential removal of one of the on ramps from Santa Rita Rd to I-580 East	Tier	3	0	1
Ala-580-X11	Alameda	580	Dublin, Pleasanton	Interchange Improvements - Class I or IV	El Charro Rd	Interchange improvement to modernize and improve multimodal access and traffic safety, lessening the barriers to biking	Tier	1	0	0
Ala-580-X12	Alameda	580	Pleasanton	Interchange Improvements - Class I or IV	San Ramon Rd	Interchange improvement to modernize and improve multimodal access and traffic safety, lessening the barriers to biking	Tier	3	0	1
Ala-580-X13	Alameda	580	Oakland	Interchange improvements - Class II	Kuhnle Ave	Add Class II bike lanes on Kuhnle Ave	Tier 3	2	0	1
Ala-580-X14	Alameda	580	Oakland	Interchange improvements - Class II	Edwards Ave	Install bike lanes at interchange	Tier 2	2	0	2
Ala-580-X15	Alameda	580	Oakland	Interchange improvements - Class IIB	Golf Links Rd	Consider squaring on-ramp from 98th to I-580 east bound and adding stop signs for ramp access (esp from 98th Ave heading west) to reduce speeds. Install Class IIB bike lanes.	Tier	2	0	3
Ala-580-X16	Alameda	580	Dublin	New separated crossing	Demarcus Blvd	Connect Iron Horse Trail thru Dublin/Pleasanton BART station using Caltrans ROW	Tier	3	0	1
Ala-580-X17	Alameda	580	Livermore	New separated crossing	Sutter St	Provide bike/ped overcrossing of I-80 east of Isabel Ave consistent with Isabel specific plan and SF Bay to San Joaquin River Trail	Tier	2	0	0
Ala-580-X18	Alameda	580	Livermore	New separated crossing	Heritage Dr	Provide separated bike/ped crossing over I-580 west of Isabel Ave	Tier	1	0	1
Ala-580-X19	Alameda	580	Livermore	Interchange Improvements - Class IV	Airway Blvd	Provide separated bikeways, conflict striping, and signage on Airway Blvd across I-580	Tier	1	0	1
Ala-580-X20	Alameda	580	Livermore	Interchange improvements - Class II	N Livermore Ave	Provide separated bikeways, conflict striping, and signage on Livermore Ave across I-580. Widen bikeway to include more width that is not in the gutter pan.	Tier	1	1	1
Ala-580-X21	Alameda	580	Livermore	Interchange improvements - Class IV	Vasco Rd	Reconstruct and square up ramps at I-580 Vasco Rd interchange.	Tier	2	2	1
Ala-580-X22	Alameda	580	Livermore	Interchange improvements - Class IIB	First St	Provide separated bikeways on First St thru I-580 interchange	Tier	2	0	1
Ala-680-NX01	Alameda	680	Pleasanton	Interchange improvements - Class I or Class IV	Bernal Ave	Interchange improvements	Tier 1	2	3	1
Ala-680-NX02	Alameda	680	Fremont	Interchange improvement - Class IV	Mission Blvd /680	Install bicycle interchange improvements, such as square up ramps, install Class IV bikeways, add signage and striping to mark bicycle conflict points and remove free right turns.	Tier	2	0	0
Ala-680-NX03	Alameda	680	Dublin	Undercrossing Improvements	Dublin Blvd	Install Class IV along Dublin Blvd to connect with planned Countywide network	Tier	2	0	1
Ala-680-NX05	Alameda	680	Pleasanton	Overcrossing improvements	West Las Positas Blvd	Install Class IV at overcrossing	Tier 3	2	0	1
Ala-680-NX06	Alameda	680	Pleasanton	New separated crossing	Muirwood and Val Vista Park	Install new separated crossing as described in City of Pleasanton Bike Plan	Tier	2	0	1

Num	County	Route	City	Improvement Type	Location	Description	Tier	Mobility Score	Safety Score	Equity Score
Ala-680-X01	Alameda	680	Pleasanton	Interchange Improvements - Class I or IV	Stoneridge Dr	Interchange improvements	Tier 2	2	2	1
Ala-680-X02	Alameda	680	Pleasanton	New separated crossing	Arroyo de Laguna	Dublin bike plan includes paving an unpaved trail and continuing under I-680	Tier	2	0	1
Ala-680-X03	Alameda	680	Pleasanton	Interchange improvements - Class IV	Sunol Blvd	Explore interchange reconstruction and squaring up of ramps.	Tier	2	0	1
Ala-680-X04	Alameda	680	San Ramon, Dublin	Interchange Improvements - Class IV	Alcosta Blvd	Class IV Bikeways, interchange improvements	Tier	2	1	1
Ala-680-X05	Alameda	680	Fremont	Interchange improvements - Class IV	Scott Creek Rd	Explore interchange reconstruction and squaring up of ramps and recommendations in Fremont Bicycle Master Plan	Tier	0	0	1
Ala-680-X06	Alameda	680	Fremont	Interchange improvements - Class IV	Mission Blvd	Install bicycle interchange improvements, such as square up ramps, install Class IV bikeways, add signage and striping to mark bicycle conflict points and remove free right turns.	Tier	2	0	1
Ala-680-X07	Alameda	680	Fremont	Interchange improvements - Class IV	Auto Mall Pkwy	Install bicycle interchange improvements, such as square up ramps, install Class IV bikeways, add signage and striping to mark bicycle conflict points and remove free right turns.	Tier	2	0	1
Ala-680-X08	Alameda	680	Fremont	New separated crossing	Washington Blvd	Explore separated crossing as proposed in Fremont Bicycle Master Plan	Tier	2	0	0
Ala-680-X08	Alameda	680	Fremont	New separated crossing	Sabercat Trail	Explore separated crossing as proposed in Fremont Bicycle Master Plan	Tier	2	0	0
Ala-680-X09	Alameda	680	Fremont	Interchange improvement - Class IV	Washington Blvd	Install bicycle interchange improvements, such as square up ramps, install Class IV bikeways, add signage and striping to mark bicycle conflict points and remove free right turns.	Tier	2	0	0
Ala-680-X10	Alameda	680	Fremont	New separated crossing	E of Palm Ave	Explore separated crossing at E of Palm Ave	Tier 3	1	0	0
Ala-880-NC01	Alameda	880	Oakland	Corridor Improvement - Class IV	Washington St - Madison St	Install Class IV along 6th St between Washington St and Madison St. Project under way by Alameda CTC as part of the Oakland Alameda Access Project (OAAP)	Tier	3	1	3
Ala-880-NX01	Alameda	880	Oakland	Undercrossing Improvement	Adeline St/ I-880	Install Class II bike lanes on Adeline St undercrossing at I-880	Tier	3	0	3
Ala-880-NX02	Alameda	880	Oakland	Undercrossing Improvement	7th St/ I-880	Install Class IV bikeways on 7th St undercrossing of I-880	Tier	2	0	3
Ala-880-NX03	Alameda	880	Oakland	Undercrossing Improvement	Market St/ 880	Install Class IV bikeways on Market St undercrossing of I-880	Tier	3	2	3
Ala-880-NX04	Alameda	880	Oakland	Undercrossing Improvement	MLK Way and I-880	Install Class IV bikeways on MLK Jr/ Way undercrossing of I-880	Tier	3	0	3
Ala-880-NX05	Alameda	880	Oakland	Undercrossing Improvement	Harrison St / I-880	Install Class IV or Class I on Harrison St undercrossing of I-880	Tier	3	0	3
Ala-880-NX06	Alameda	880	Union City	New separated crossing	Alameda Creek Trail	Add Class I path on north side of Alameda Creek Trail beneath 880	Tier	2	1	2
Ala-880-NX07	Alameda	880	Oakland	Interchange improvements - Class IV	Jackson St	Install Class IV bike lanes on Jackson St interchange at I-880	Tier	3	2	3
Ala-880-NX08	Alameda	880	Oakland	Undercrossing Improvement	Webster St	Install Class IV bikeway on Webster St undercrossing of I-880	Tier	3	1	3
Ala-880-NX09	Alameda	880	Oakland	Interchange improvements - Class IV	Oak St / I-880	Install Class IV bikeways on Oak St interchange at I-880	Tier	3	0	3
Ala-880-NX10	Alameda	880	San Leandro	Overpass Improvements - Class IV	William St	Install Class IV separated bikeway to overpass	Tier	3	0	3
Ala-880-NX11	Alameda	880	San Leandro	Overpass Improvements - Class IV	Floresta Blvd	Install Class IV separated bikeway to overpass	Tier	2	0	3
Ala-880-NX12	Alameda	880	Oakland	Undercrossing Improvement	Mandela Pkwy/ 880	Install Class IV through undercrossing	Tier 1	3	0	3
Ala-880-NX13	Alameda	880	Oakland	Undercrossing Improvement - Class IV	Madison St	Upgrade Class IIB to a Class IV protected bikeways on Madison St undercrossing at I-580	Tier	3	2	3
Ala-880-NX14	Alameda	880	Oakland	New separated crossing	San Leandro Creek	Provide Class I multi use path connection	Tier 1	2	0	3

Num	County	Route	City	Improvement Type	Location	Description	Tier	Mobility Score	Safety Score	Equity Score
Ala-880-NX16	Alameda	880	Oakland	Interchange improvements - Class IV	23rd Ave/ 880	Install Class IV bikeways on 23rd Ave interchange at I-880	Tier	3	0	3
Ala-880-NX17	Alameda	880	Oakland	Overcrossing improvement - Class IV	16th Ave	Install Class IV bikeways on 16th Ave overcrossing	Tier	2	0	3
Ala-880-NX18	Alameda	880	Oakland	Undercrossing improvement - Class IV	5th Ave/ 880	Install Class IV bikeways on 5th Ave undercrossing	Tier	1	0	3
Ala-880-NX19	Alameda	880	Union City	New separated crossing	Alvarado-Niles Rd	Class I shared use path proposed for overcrossing	Tier	2	2	1
Ala-880-X02	Alameda	880	Hayward	New separated crossing	Eden Greenway	Provide separated bike/ped crossing connecting two sides of the Eden Greenway	Tier	2	0	3
Ala-880-X03	Alameda	880	San Leandro	Interchange improvements - Class IV	Washington Ave	Install Class IV separated bikeway as proposed in the San Leandro Bicycle and Pedestrian Master Plan (2018). Explore reconfiguring interchange ramps west of I-880	Tier	3	2	3
Ala-880-X04	Alameda	880	Hayward	Interchange improvements - Class IV	Winton Ave	Install bicycle interchange improvements, such as square up ramps, install Class IV bikeways, add signage and striping to mark bicycle conflict points and remove free right turns.	Tier	3	2	3
Ala-880-X05	Alameda	880	Hayward	Interchange improvements - Class IV	W A St	Install bicycle interchange improvements, such as square up ramps, install Class IV bikeways, add signage and striping to mark bicycle conflict points and remove free right turns.	Tier	2	1	3
Ala-880-X06	Alameda	880	Hayward	Interchange improvements - Class IV	W Tennyson Rd	Install bicycle interchange improvements, such as square up ramps, install Class IV bikeways, add signage and striping to mark bicycle conflict points and remove free right turns.	Tier	2	2	3
Ala-880-X07	Alameda	880	Union City, Hayward	Interchange improvements - Class IV	Whipple Rd	As part of Whipple Rd/Industrial Pkwy project by ACTC, provide new separated crossing on or near Ward Creek to connect to existing path	Tier	2	2	2
Ala-880-X08	Alameda	880	Hayward, Union City	New separated crossing	Industrial Pkwy W	Explore reconfiguring ramp connections to Industrial Blvd.	Tier	1	0	3
Ala-880-X09	Alameda	880	Fremont	Interchange improvements - Class IV	Alvarado Blvd	Explore creating new separated crossing	Tier 2	2	2	0
Ala-880-X10	Alameda	880	Fremont	New separated crossing	Paseo Padre Pkwy	Explore new separated crossing consistent with 2017 Fremont Bicycle Master Plan Update	Tier	1	0	0
Ala-880-X11	Alameda	880	Fremont	New separated crossing	Decoto Rd	Proposed in Fremont Bike Plan	Tier 1	3	3	1
Ala-880-X13	Alameda	880	Fremont	Interchange improvement - Class IV	Mowry Ave	Install bicycle interchange improvements, such as square up ramps, install Class IV bikeways, add signage and striping to mark bicycle conflict points and remove free right turns.	Tier	2	3	2
Ala-880-X14	Alameda	880	Fremont	Interchange improvement - Class IV	Stevenson Blvd	Install bicycle interchange improvements, such as square up ramps, install Class IV bikeways, add signage and striping to mark bicycle conflict points and remove free right turns.	Tier	2	3	1
Ala-880-X15	Alameda	880	Fremont	Interchange improvements - Class IV	Auto Mall Pkwy	Upgrade Class IV bikeways to use higher quality materials such as concrete	Tier	1	3	1
Ala-880-X16	Alameda	880	Fremont	Interchange improvements - Class IV	Fremont Blvd	Upgrade Class IV bikeways to use higher quality materials such as concrete	Tier	3	2	1
Ala-880-X17	Alameda	880	Fremont	New separated crossing	Agua Caliente Creek	Explore separated crossing of 880 as mentioned in Fremont Bicycle Master Plan	Tier	2	0	1
Ala-880-X18	Alameda	880	Union City	Interchange improvements - Class IV	Alvarado Niles Rd	Provide bike lanes, conflict striping, and signage on Alvarado-Niles Rd thru I-880 interchange. Explore interchange reconstruction to square up ramps and install bike lanes. See concept designs included in Union City Bike Ped Plan Appendix H.	Tier	2	3	2

Num	County	Route	City	Improvement Type	Location	Description	Tier	Mobility Score	Safety Score	Equity Score
Ala-880-X19	Alameda	880	Oakland	Interchange improvements - Class IV	Hegenberger Rd	Explore ramp reconfiguration, install a Class IV, priority intersection improvement in City of Oakland Bike Plan	Tier	2	0	3
Ala-880-X20	Alameda	880	Oakland	New separated crossing	66th Ave	Provide separated crossing of I-880 as part of Coliseum BART to Bay Trail connection.	Tier	2	0	3
Ala-880-X21	Alameda	880	Oakland	New separated crossing	54th Ave	Provide separated crossing of I-880 on 50th Ave or 54th Ave/flood control channel	Tier	2	0	3
Ala-880-X22	Alameda	880	Oakland	Interchange improvements - Class IV	High St	Interchange improvements, install a Class IV bikeway at High St / I-880 interchange	Tier	3	0	3
Ala-880-X23	Alameda	880	Oakland	New separated crossing	Grand Ave	The Link to Gateway Park and Bay Bridge - would provide a safe separated pathway that connects the entire population of Oakland to the Bay Bridge Trail and Gateway Park. The project removes the barrier created by the existing industrial infrastructure and	Tier	2	2	3
Ala-880-X24	Alameda	880	Oakland	New separated crossing	Lake Merritt Channel	Complete Lake Merritt to Bay Trail connection under I-880 and over railroad tracks to connect to Embarcadero Rd upgrades.	Tier	3	0	3
Ala-880-X25	Alameda	880	Oakland	Interchange improvements - Class I or IV	66th Ave	Provide near term bicycle striping improvements at 66th Ave and I-880 ramps. Longer term separated overcrossing planned. Possible lane reduction to accommodate Class I path.	Tier	2	0	3
Ala-880-X26	Alameda	880	Oakland	Interchange improvements - Class II	98th Ave	Convert existing shoulder to bike lanes on 98th Ave thru I-880 interchange. Provide conflict zone markings.	Tier	2	0	3
Ala-880-X27	Alameda	880	San Leandro	Interchange improvements - Class IV	Marina Blvd	Provide class IV bikeways, conflict zone markings, install signage, square up ramps on Marina Blvd thru I-880 interchange	Tier	2	0	3
Ala-880-X29	Alameda	880	Fremont	Interchange improvements - Class IV	Decoto Rd	Provide bike lanes, conflict striping, and signage on Decoto Rd/Hwy 84 thru I-880 interchange. Short term improvement paired with long term proposed overcrossing.	Tier	2	3	1
Ala-880-X30	Alameda	880	Fremont	Interchange improvements - Class IV	Thornton Ave	Square up ramps, install Class IV bikeways, add signage and striping to mark bicycle conflict points, remove free right turns.	Tier	2	0	2
Ala-880-X33	Alameda	880	Fremont	Interchange improvements - Class IV	Warren Ave	Install bicycle interchange improvements, such as square up ramps, install Class IV bikeways, add signage and striping to mark bicycle conflict points and remove free right turns.	Tier	1	0	1
Ala-880-X34	Alameda	880	Fremont	New separated crossing	Coyote Creek (Fremont Blvd)	Provide separated bike/ped crossing of I-880 to support future East Bay Greenway extension to Fremont	Tier	1	0	1
Ala-980-NX01	Alameda	980	Oakland	Undercrossing Improvement	7th St / 980	Install Class IV bikeway on 7th St undercrossing at I-980	Tier	2	0	3
Ala-980-NX02	Alameda	980	Oakland	Overcrossing Improvement	11 St / 980	Install Class IV bikeway on 11th St overcrossing at I-980	Tier	3	0	3
Ala-980-NX03	Alameda	980	Oakland	Overcrossing Improvement	12 St / 980	Install Class IV bikeway on 12th St overcrossing at I-980	Tier	3	0	3
Ala-980-NX04	Alameda	980	Oakland	Overcrossing Improvement	17th / 980	Install Class IIB bikeway on 17th St overcrossing at I-980	Tier	3	0	3
Ala-980-NX05	Alameda	980	Oakland	Undercrossing Improvement	West Grand / 980	Install Class IV bikeway at West Grand undercrossing at I-980	Tier	3	0	3
Ala-980-X01	Alameda	980	Oakland	Interchange improvements - Class IV	14th St	Install Class IV separated bikeway on 14th Street overpass	Tier	3	0	3
CC-4-C01	Contra Costa	4	Concord, Pittsburg	Corridor Improvement - Class I	Walnut Creek - Willow Pass Rd	Construct Class I shared use path along Hwy 4 from Walnut Creek to Willow Pass Rd	Tier	3	0	3
CC-4-C02	Contra Costa	4	Pittsburg	Corridor Improvement - Class I	Crestview Dr - Harbor St	Provide improved bike/ped connections to Pittsburg Center eBART station. Proposed shared use path consistent with Railroad Ave Specific Plan.	Tier	3	0	3
CC-4-C03	Contra Costa	4	Brentwood	Corridor Improvement - Class II	Vasco Rd - Newport Dr	Provide bike lanes on Hwy 4 in Brentwood	Tier 2	2	0	2

Num	County	Route	City	Improvement Type	Location	Description	Tier	Mobility Score	Safety Score	Equity Score
CC-4-NC01	Contra Costa	4	Pittsburg	Corridor Improvement - Class I	Chelsea Way - Dover Way	Add a Class I facility using abandoned land south of freeway. Project identified in Pittsburg Moves Active Transportation Plan.	Tier	2	0	3
CC-4-NX01	Contra Costa	4	Martinez	Interchange improvements - Class IV	Pacheco Blvd	Install Class IV bikeways through ₃ interchange	Tier	2	0	1
CC-4-NX02	Contra Costa	4	Martinez	Interchange improvements - Class IV	Alhambra Ave	Install Class IV bikeways through ₃ interchange	Tier	1	1	1
CC-4-NX03	Contra Costa	4	Martinez	Undercrossing improvements - Class II	Alhambra Way	Install Class II at undercrossing	Tier 3	1	0	1
CC-4-NX04	Contra Costa	4	Unincorporated Contra Costa County	Interchange improvements - Class II	Cummings Skyway	Install Class II bike lanes through interchange, square up ramps, add green conflict markings	Tier	1	0	1
CC-4-NX05	Contra Costa	4	Hercules	Intersection improvements at controlled intersection	John Muir Pkwy/ San Pablo Ave/ Hwy 4	Add green conflict markings, remove pork chop island and reduce corner curb radius	Tier	2	0	1
CC-4-NX06	Contra Costa	4	Pittsburg	Overcrossing improvements - Class IV	Harbor St	Install Class IV bikeways at overcrossing as identified in the Pittsburg Moves ₂ Active Transportation Plan	Tier	2	0	3
CC-4-NX07	Contra Costa	4	Pittsburg	Interchange improvements - Class IV	Railroad Ave	Upgrade existing Class IIB to a Class IV as identified in the Pittsburg Moves ₁ Active Transportation Plan	Tier	3	0	3
CC-4-NX08	Contra Costa	4	Brentwood	Interchange improvements - Class IV	Balfour Rd/ SR-4	Upgrade existing Class II to a Class IV ₂ bikeway,	Tier	1	2	1
CC-4-NX99	Contra Costa	4	Pittsburg	New separated crossing	Range Rd	Pittsburg Moves Active Transportation Plan identifies Range Rd as potential ₁ ped/bike overcrossing	Tier	1	0	3
CC-4-X01	Contra Costa	4	Concord	Interchange improvements - Class IV	Port Chicago Hwy	Construct Class I or IV bikeways through interchange. Reconfigure and square up ramps from Port Chicago Hwy on to Hwy 4, add green conflict markings.	Tier	2	0	3
CC-4-X02	Contra Costa	4	Pittsburg	Interchange improvements - Class IV	Bailey Rd	Improve connections of existing trail through Bailey Rd interchange and to the Pittsburg BART station. Stripe trail ₁ crossing markings on the west and south crosswalks to highlight the trail and allow for two-stage crossing through the intersection.	Tier	2	1	3
CC-4-X03	Contra Costa	4	Pittsburg	Interchange improvements - Class IV	Loveridge Rd	Install Class IV bikeways through interchange as identified in Pittsburg Moves Active Transportation Plan. Reduce corner curb radius, square up ramps.	Tier	1	0	3
CC-4-X04	Contra Costa	4	Antioch	Interchange improvements - Class IV	Sommerville Rd	Upgrade Class II bike lanes to Class IV bikeways. Add green conflict markings. Reduce the number of on-ramp entry lanes such that there are only as many ₁ on-ramp entry lanes as the number of lanes that feed into them during any given signal phase.	Tier	2	3	3
CC-4-X05	Contra Costa	4	Antioch	Interchange improvements - Class IV	Contra Loma Rd	Upgrade Class II to Class IV bikeways. Reduce the number of on-ramp entry lanes such that there are only as many ₁ on-ramp entry lanes as the number of lanes that feed into them during any given signal phase.	Tier	2	2	3
CC-4-X06	Contra Costa	4	Antioch	Interchange improvements - Class IV	Lone Tree Way / SR-4	Upgrade Class II bike lanes to Class IV bikeways. Add green conflict markings. Reduce the number of on-ramp entry lanes such that there are only as many ₁ on-ramp entry lanes as the number of lanes that feed into them. Remove floating bike lane.	Tier	2	0	3
CC-4-X07	Contra Costa	4	Antioch	Interchange improvements - Class IV	Hillcrest Ave	Upgrade Class II to a Class IV bikeway. Potential sidewalk level Class IV bikeway on Hillcrest Ave thru Hwy 4 interchange. Consider connection to Antioch BART station.	Tier	3	0	3
CC-4-X08	Contra Costa	4	Brentwood	New separated crossing	Marsh Creek Rd	Provide new separated bike/ped overcrossing of Hwy 4 north of Marsh Creek Rd.	Tier	1	0	1
CC-4-X09	Contra Costa	4	Concord	New separated crossing	Walnut Creek	Provide Iron Horse Trail connection under Hwy 4 bridge over Walnut Creek ₂	Tier	2	0	3

Num	County	Route	City	Improvement Type	Location	Description	Tier	Mobility Score	Safety Score	Equity Score
CC-4-X10	Contra Costa	4	Brentwood	New separated crossing	Lone Tree Way	Provide separated bike/ped overcrossing over Hwy 4 for a proposed trail (south of Lone Tree Way)	Tier	2	0	1
CC-4-X11	Contra Costa	4	Unincorporated	New separated crossing	Christie Rd	Provide separated crossing of Hwy 4 east of Christie Rd	Tier	1	0	1
CC-4-X12	Contra Costa	4	Concord	New separated crossing	Northwood Cir	Provide separated crossing of Hwy 4 near Hwy 242 interchange	Tier	2	0	3
CC-24-NX01	Contra Costa	24	Lafayette	Interchange improvements - Class IV	Pleasant Hill Rd	Install bicycle interchange improvements, such as square up ramps, install Class I or Class IV bikeways, remove free right turns, remove floating bike lanes or upgrade to partially protected bike lanes.	Tier	2	0	0
CC-24-NX02	Contra Costa	24	Lafayette	Interchange improvements - Class IV	Deer Hill Rd	Install bicycle interchange improvements, such as square up ramps, install Class I or Class IV bikeways, remove free right turns, remove floating bike lanes or upgrade to partially protected bike lanes.	Tier	2	0	0
CC-24-NX03	Contra Costa	24	Lafayette	Undercrossing improvements - Class II	Happy Valley Rd	Install Class II bike lanes through undercrossing	Tier	2	0	0
CC-24-NX04	Contra Costa	24	Lafayette	Interchange improvements - Class IV	Acalanes Rd	Install bicycle interchange improvements, such as square up ramps, install Class IV bikeways, add signage and striping to mark bicycle conflict points and remove free right turns.	Tier	1	0	0
CC-24-NX05	Contra Costa	24	Orinda	Interchange improvements - Class IV	Camino Pablo	Install bicycle interchange improvements, such as square up ramps, install Class IV bikeways, remove floating bike lanes or upgrade to partially protected bike lanes. In addition, look into upgrading sidewalk leading to overcrossing to a Class I.	Tier	2	1	0
CC-24-X01	Contra Costa	24	Orinda	New separated crossing	Camino Pablo	Provide separate crossing of Hwy 24 near Orinda BART station	Tier	2	0	0
CC-80-NX01	Contra Costa	80	Pinole	Interchange improvements - Class IV	Appian Way	Install Class IV bikeways through interchange, square up ramps and add green conflict markings	Tier	2	0	3
CC-80-NX02	Contra Costa	80	Pinole	Interchange improvements - Class IV	Fitzgerald Dr	Install Class IV bikeways through interchange, square up ramps and add green conflict markings	Tier	2	0	3
CC-80-NX03	Contra Costa	80	San Pablo	Interchange improvements - Class IV	San Pablo Dam Rd	Install Class IV bikeways through interchange, square up ramps and add green conflict markings	Tier	3	0	3
CC-80-NX04	Contra Costa	80	Richmond	Undercrossing improvement - lighting	Richmond Greenway	Install lighting at Richmond Greenway undercrossing	Tier	3	0	3
CC-80-NX05	Contra Costa	80	San Pablo	Interchange improvements - Class I or IV	El Portal Dr	Install Class I or IV bikeways through interchange	Tier	2	1	3
CC-80-NX06	Contra Costa	80	Pinole	Interchange improvements - Class IV	Pinole Valley Rd	Install Class IV bikeways through interchange, add green conflict markings and elements of a protected intersection.	Tier	2	0	1
CC-80-NX07	Contra Costa	80	Pinole	New separated crossing	Pinole Creek	Construct a bike/ped crossing to connect with future extension of the Pinole Creek Trail	Tier	1	0	1
CC-80-X01	Contra Costa	80	Richmond, El Cerrito	Interchange improvements - Class I	Cutting Blvd	Provide Class I or IV facility on Cutting Blvd thru I-80 interchange, using available space under existing elevated structure.	Tier	3	1	3
CC-80-X02	Contra Costa	80	El Cerrito, Richmond	Interchange improvements - Class I or IV	Potrero Ave	Provide Class I or IV bikeway, conflict striping, signage on Potrero Ave thru I-80 interchange. Consider using space under I-80 for a Class I path similar to Powell St in Emeryville.	Tier	3	0	3
CC-80-X03	Contra Costa	80	Richmond	Interchange improvements - Class II	Carlson Blvd	Reduce curb radii and remove slip ramp from I-80 NB to Carlson Blvd EB	Tier	1	1	3
CC-80-X04	Contra Costa	80	Richmond	Interchange improvements - Class I	Central Ave	Provide Class I path under I-80 freeway at Central Ave, using space adjacent to roadway similar to Powell St in Emeryville.	Tier	3	2	3

Num	County	Route	City	Improvement Type	Location	Description	Tier	Mobility Score	Safety Score	Equity Score
CC-80-X05	Contra Costa	80	Crockett	New separated crossing	Carquinez Bridge Trail	Construct dedicated bicycle and pedestrian facilities to create eastern and western approaches to the existing bicycle and pedestrian path on the Zampa Bridge.	Tier	1	0	3
CC-80-X06	Contra Costa	80	Richmond	Interchange improvements - Class IV	Barrett Ave	Provide Class IV bikeway through interchange and clear markings for ramp crossings.	Tier	3	0	3
CC-80-X07	Contra Costa	80	Richmond	Interchange improvements - Class I or IV	MacDonald Rd	Reconstruct offramp from I-80 to Macdonald road, provide Class I or IV through interchange to connect to Richmond Greenway	Tier	3	3	3
CC-80-X08	Contra Costa	80	Richmond	Interchange improvements - Class II	Solano Ave	Provide bike lanes through Solano Ave interchange.	Tier	2	0	3
CC-80-X09	Contra Costa	80	Richmond	Interchange improvements - Class II	McBryde Ave	Provide bike lanes and green striping through McBryde Avenue	Tier	2	0	3
CC-80-X10	Contra Costa	80	Richmond	Interchange improvements - Class IV	Hilltop Dr	Upgrade Class II to Class IV bikeways, square up ramps	Tier	2	0	3
CC-123-C01	Contra Costa	123	El Cerrito	Corridor Improvement- Class IV	Central Ave - Potrero Ave	Provide Class IV separated bikeway on San Pablo Ave from Central Ave to Potrero Ave consistent with El Cerrito San Pablo Ave Specific Plan (2022)	Tier	3	2	3
CC-123-X01	Contra Costa	123	El Cerrito	Intersection improvement at controlled intersection	Central Ave	Improve intersection striping on Central and Fairmont across San Pablo	Tier	3	0	3
CC-160-C01	Contra Costa	160	Antioch	Corridor Improvement- Class II	Bridgehead Rd - Sacramento County line	Provide bike lanes on Hwy 160 bridge	Tier 2	2	0	3
CC-160-NX01	Contra Costa	160	Antioch	Interchange improvements - Class II	E 18th St/ SR-160	Install bike lanes to connect with proposed bike lanes on E 18th St in Contra Costa County Bike Plan	Tier	1	2	3
CC-160-NX02	Contra Costa	160	Antioch	Interchange improvements - Class IV	Wilbur Ave/ SR-160	Install Class IV bikeways through interchange. Remove slip lanes, add green conflict markings.	Tier	1	0	3
CC-242-NX01	Contra Costa	242	Concord	Uncrossing improvement - Class I	Willow Pass Rd	Extend Class I, widen to 10 ft where possible, provide lighting at uncrossing	Tier	2	0	3
CC-242-X01	Contra Costa	242	Concord	Interchange improvements - Class IV	Concord Ave	Reconfigure and square up ramps from Concord Ave to Hwy 242, provide bike lanes thru interchange. Coordinate with proposed Concord Complete Streets Study	Tier	3	0	3
CC-242-X02	Contra Costa	242	Concord	Interchange improvements - Class I or IV	Grant St	Provide Class I or Class IV bikeway, conflict striping, and signage on Grant Ave thru Hwy 242 interchange. Coordinate with proposed Concord complete streets study. Connect with existing 242 Class I.	Tier	2	3	3
CC-242-X03	Contra Costa	242	Concord	Interchange improvements - Class II	Olivera Rd	Reconfigure and square up ramps from Olivera Rd to Hwy 242, provide bike lanes thru interchange	Tier	2	0	3
CC-580-C02	Contra Costa	580	Point Richmond	Corridor Improvement- Class I	Garrard Blvd - Castro St	Provide Class I path along side elevated I-580 (over railroad tracks) from Garrard Blvd to Castro St.	Tier	2	0	2
CC-580-NX01	Contra Costa	580	Richmond	Overcrossing improvements - Class IV	Marina Way S	Part of the Richmond Wellness Trail. Construct Two-way class IV facility on west side of street to connect with proposed Trail.	Tier	2	0	3
CC-580-X01	Contra Costa	580	Richmond	Interchange improvements - Class I or IV	Marina Bay Pkwy	Install bicycle interchange improvements, such as square up ramps, install Class I or IV bikeways, add signage and striping to mark bicycle conflict points and remove free right turns. Install RRFBS, and potentially install truck turning apron.	Tier	1	3	3
CC-580-X02	Contra Costa	580	Richmond	Interchange improvement - Class IV	Cutting Blvd	Install bicycle interchange improvements, such as square up ramps, install Class IV bikeways, add signage and striping to mark bicycle conflict points and remove free right turns. Install RRFBS, and potentially install truck turning apron.	Tier	2	3	3
CC-580-X03	Contra Costa	580	Richmond	Interchange improvements - Class IIB	Central Ave	Provide buffered bike lanes through Central Ave interchange, including green striping and signage.	Tier	2	0	3
CC-680-C01	Contra Costa	680	Martinez	Corridor Improvement- Class I	Mococo Rd	Install Class I to provide connection to Bay Trail	Tier	2	0	0

Num	County	Route	City	Improvement Type	Location	Description	Tier	Mobility Score	Safety Score	Equity Score
CC-680-NX01	Contra Costa	680	San Ramon	Interchange improvements - Class IV	San Ramon Valley Blvd	Provide Class IV through interchange	Tier 3	1	0	0
CC-680-NX02	Contra Costa	680	San Ramon	Interchange improvements - Class IV	Crow Canyon Rd	Class IV Bikeways, interchange improvements	Tier	2	0	0
CC-680-NX03	Contra Costa	680	San Ramon	Overcrossing improvement	Norris Canyon	Construct Class IV on overcrossing	Tier 3	1	0	0
CC-680-NX04	Contra Costa	680	Walnut Creek	Interchange improvements - Class I or IV	Treat Blvd	Provide Class IV or Class I bikeways through interchange see I-680/Treat Blvd Bicycle & Pedestrian Improvements study	Tier	3	3	1
CC-680-NX05	Contra Costa	680	Pleasant Hill	Overcrossing improvements - Class IV	Coggins Dr	Install Class IV through overcrossing, install green pavement markings at conflict zones	Tier	3	0	0
CC-680-NX06	Contra Costa	680	Walnut Creek	Interchange improvements - Class IV	N Main St	Install bicycle interchange improvements, such as square up ramps, install Class IV bikeways, add signage and striping to mark bicycle conflict points and remove free right turns.	Tier	2	0	1
CC-680-NX07	Contra Costa	680	Walnut Creek	Interchange improvements - Class I or IV	Hillside Ave	Install bicycle interchange improvements, such as square up ramps, install Class I or Class IV bikeways, add signage and striping to mark bicycle conflict points and remove free right turns.	Tier	3	0	1
CC-680-NX08	Contra Costa	680	Walnut Creek	Interchange improvements - Class IV	Olympic Blvd	Install bicycle interchange improvements, such as square up ramps, install Class IV bikeways	Tier	3	0	1
CC-680-NX09	Contra Costa	680	Walnut Creek	Undercrossing improvements - Class IV	Newell Ave	Install Class IV bikeways through undercrossing and install lighting.	Tier	2	0	1
CC-680-NX10	Contra Costa	680	Unincorporated	Interchange improvements - Class IV	Stone Valley Rd	Install Class IV bikeways through interchange	Tier	0	3	0
CC-680-NX11	Contra Costa	680	Danville	Interchange improvements - Class IV	El Cerro Blvd	Install Class IV bikeways through interchange	Tier	0	0	0
CC-680-NX12	Contra Costa	680	Danville	Interchange improvements - Class IV	Diablo Rd	Upgrade Class IIB to a Class IV, install truck turning apron or curb extension to reduce corner curb radius	Tier	0	0	0
CC-680-X01	Contra Costa	680	San Ramon	Interchange improvements - Class I or IV	Bollinger Canyon Rd	Reconstruct and square up ramp ends from Bollinger Canyon Rd on to I-680, provide Class I or IV and conflict striping thru interchange.	Tier	1	2	0
CC-680-X02	Contra Costa	680	Danville	Interchange improvements - Class IV	Sycamore Valley Rd	Provide Class IV bikeways, square up ramps, and install conflict striping and signage on Sycamore Valley Rd thru I-680 interchange	Tier	2	0	0
CC-680-X03	Contra Costa	680	Concord	Interchange improvements - Class I or IV	Monument Blvd	Provide Class I or Class IV bikeways, conflict striping and signage on Monument Blvd thru I-680 interchange.	Tier	3	0	1
CC-680-X04	Contra Costa	680	Concord	Interchange improvements - Class IV	Willow Pass Rd	Reconstruct Willow Pass Rd and I-680 ramps to create a Class I facility thru the interchange area. Coordinate with Concord Willow Pass / Cowell Rd Complete Streets Study	Tier	3	2	3
CC-680-X05	Contra Costa	680	Concord	Interchange improvements - Class IV	Concord Ave	Provide Class IV bikeways, conflict striping, and signage on Concord Ave thru I-680 interchange. Coordinate with proposed Concord complete streets study	Tier	2	0	3
CC-4,160-NX01	Contra Costa	4/ 160	Oakley	Class I trail connection	Via Delta Anza Trail connection to Slatten Ranch Rd	Potential Via Delta Anza Trail connection to Slatten Ranch Rd. Desired low stress facility without any project planned or under study, identified in CCTA low stress countywide bikeway network, see https://ccta.net/projects/countywide-bi	Tier	2	0	3
CC-680,24,NX02	Contra Costa	680/ 24	Walnut Creek	Undercrossing improvements - Class IV	Mt Diablo Blvd	Install Class IV bikeways through undercrossing and explore options of installing protected intersection at the intersection	Tier	3	1	1
CCMa-580-C01	Contra Costa, Marin	580	Richmond, San Rafael	Corridor Improvement - Class I	Western Ave - Main St	Provide permanent bicycle access on Richmond-San Rafael Bridge	Tier	2	1	3

Num	County	Route	City	Improvement Type	Location	Description	Tier	Mobility Score	Safety Score	Equity Score
Mar-1-C01	Marin	1	Point Reyes Station	Corridor Improvement- Class I	Dillon Beach Rd - Point Reyes Petaluma Rd	Long term project to provide Class I facility. Near term project to provide buffered Class II bicycle facilities on Highway 1 as proposed in the Draft Marin County Bicycle and Pedestrian Plan (2017). Use the "widen where feasible approach" to provide add	Tier	1	3	0
Mar-1-C02	Marin	1	Point Reyes Station	Corridor Improvement- Class I	Sir Francis Drake Blvd - Point Reyes Petaluma Rd	Provide Class I path in the long term. In the near term provide Class II bike lanes on Hwy 1 from Bear Valley Rd to Point Reyes- Petaluma Rd.	Tier	2	2	0
Mar-1-C03	Marin	1	Unincorporated	Corridor Improvement- Class IIB	US 101 - Sir Francis Drake Blvd	Provide buffered Class II bike lanes on Highway 1 as proposed in the Marin County Bicycle and Ped Plan (2017). Prioritize Class II for uphill segments and "widen where feasible" to create additional shoulder. Consider rumble strip buffered bike lane	Tier	2	3	0
Mar-1-C04	Marin	1	Tamalpais- Homestead Valley	Corridor Improvement- Class I	Maple St - Almonte Blvd	Long Term project to provide a Class I facility, to close a gap for cyclists and pedestrians. Near Term project to provide buffered Class II bike lanes as proposed in Marin County Bicycle and Pedestrian Master Plan.	Tier	2	3	0
Mar-1-C05	Marin	1	Almonte, Tamalpais Valley	Corridor Improvement- Shoulder improvements	Hwy 1 - Panormaic Way	Provide Class II bike lanes on Highway 1 as proposed in the Draft Marin County Bicycle and Pedestrian Plan (2017). Prioritize Class II for uphill segments and "widen where feasible" to create additional shoulder	Tier	2	3	0
Mar-1-NX01	Marin	1	Mill Valley	Intersection improvement at controlled intersection	Route 1/Almonte Blvd	Install bicycle intersection improvements. Consider insatlling a jug handle for left turning cyclists to help facilitate left hand turn for cyclists turning onto Rt 1 from NB on Shoreline Hwy	Tier	2	0	0
Mar-1-X01	Marin	1	Muir Beach	Intersection Improvement at uncontrolled intersection	Franks Valley Rd	Intersection has challenging sight lines for bicyclists exiting Franks Valley Road. Some kind of roundabout here may improve safety/comfort, but I'm not sure the speeds and user volumes would really make that worthwhile.	Tier	1	0	0
Mar-1-X02	Marin	1	Muir Beach	Intersection Improvement at uncontrolled intersection	Pacific Way	Pacific Way leads to beach access, which may generate demand. Sight lines and left turns to access Pacific Way are challenging. Signage may help, and additional measures (beacons or other controls) should be evaluated.	Tier	1	0	0
Mar-1-X03	Marin	1	Tamalpais- Homestead Valley	Intersection Improvement at uncontrolled intersection	Erica Rd	Consider "squaring up" the intersection with Panoramic Highway to improve sight lines and access for bicyclists	Tier	1	0	0
Mar-1-X04	Marin	1	Unincorporated	Intersection improvement at uncontrolled intersection	Miwok Trail Connection	Recommended by Bay Area Ridge Trail. Connects hiking path.	Tier	1	0	0
Mar-101-C01	Marin	101	Strawberry	Corridor Improvement- Class II	Seminary Dr - US 101	Proposed Class II bike lanes on Redwood Highway Frontage Road east side of freeway from the Marin County Draft Bicycle and Pedestrian Master Plan. Existing bike/ped grade separated crossing near on/off ramps. Bay Trail suggests Class I path	Tier	3	0	0
Mar-101-C02	Marin	101	Larkspur, Corte Madera	Corridor Improvement- Class I	Wornum Dr - Industrial Way	Install Class I path between Wornum Way and Industrial Drive to provide network connectivity.	Tier	3	0	0
Mar-101-NC02	Marin	101	Unincorporated	Corridor Improvement- Class I	Hwy 1 - Redwood Hwy Frontage Rd	In future planning efforts, as the 101 prepares to mitigate the effects of sea level rise, consider including a Class I multi use trail as a part of future adaptation projects as the Mill Valley/Sausalito Path becomes inundated more often.	Tier	3	1	0
Mar-101-NC03	Marin	101	Unincoperated	Corridor Improvement- Class I	Hwy 101 Golden Gate Bridge - Alexander Ave	Provide a two-way Class I bikeway with a vertical separation as well as a bus boarding island, to connect with existing Class I two-way bikeway.	Tier	2	0	0

Num	County	Route	City	Improvement Type	Location	Description	Tier	Mobility Score	Safety Score	Equity Score
Mar-101-NC04	Marin	101	Unincorporated	Corridor Improvement - Class I	N Bridge Blvd - Richardson Bay Bridge	In future planning efforts, as the 101 prepares to mitigate the effects of sea level rise, include a Class I multi use trail as a part of future adaptation projects as the Mill Valley/Sausalito Path becomes inundated more often.	Tier	3	2	0
Mar-101-NC05	Marin	101	Unincorporated	Corridor Improvement - Class I	Lomita Dr - Casa Buena Dr	Improve existing Class I Horse Hill Path. Widen path to at least 12 feet.	Tier	3	0	0
Mar-101-NC06	Marin	101	Unincorporated	Corridor Improvement - Class I	Atherton Ave - Redwood Hwy Bike Path	Install Class I bike path to connect with regional trail connecting Marin and Sonoma County	Tier	3	0	0
Mar-101-NC07	Marin	101	Unincorporated	Corridor Improvement - Class I	San Antonio Creek - San Antonio Rd Interchange	Install Class I bike path along San Antonio Rd and US 101 to connect with regional trail connecting Marin and Sonoma County	Tier	1	0	0
Mar-101-NC08	Marin	101	Novato	Corridor Improvement - Class I	Los Robles Rd - Nave Dr	Install a Class I multi use path to close existing bikeway gap	Tier	1	0	0
Mar-101-NC09	Marin	101	San Rafael	Corridor Improvement - Class I	Merrydale Rd - North San Padero Rd	Install a Class I multi use path to close existing bikeway gap.	Tier	2	0	3
Mar-101-NC10	Marin	101	Unincorporated	Corridor Improvement - Class I	Hanna Ranch Rd - SMART Trail	Improve existing Class I Multi Use Path, Frosty Lane. Repave and improve sections that are in Caltrans right of way.	Tier	0	0	0
Mar-101-NX01	Marin	101	Novato	Interchange improvements - Class I or IV	Delong Ave	Bike/ped interchange improvements identified in US 101 North CCP	Tier	2	0	1
Mar-101-NX02	Marin	101	Novato	Interchange improvements - Class IV	Atherton Ave	Add Class IV bikeway to Atherton Ave interchange, add green conflict markings, and tighten corner curb radius.	Tier	2	0	1
Mar-101-NX03	Marin	101	Strawberry	Interchange improvements - Class IV	US 101/ Redwood Hwy Frontage Rd (East)	Upgrade existing Class II to Class IV bikeway. Remove floating bike lane, and replace with protected or partially protected floating bike lane. Square up interchange. Add tuck apron to reduce speeds at conflict point.	Tier	2	1	0
Mar-101-NX04	Marin	101	Strawberry	Interchange improvements - Class IV	US 101/ Redwood Hwy Frontage Rd (West)	Upgrade existing Class II to Class IV bikeway. Remove floating bike lane, and replace with protected or partially protected floating bike lane. Square up interchange. Add tuck apron to reduce speeds at conflict point.	Tier	2	0	0
Mar-101-NX05	Marin	101	Novato	Interchange improvements - Class IV	Nave Dr/ Alameda Del Prado	Install bicycle interchange improvements, such as squared up ramps, install Class IV bikeways, add signage and striping to mark bicycle conflict points and remove free right turns.	Tier	1	3	1
Mar-101-NX06	Marin	101	San Rafael	Interchange improvements - Class IV or I	Manuel T. Freitas Pkwy	Install bicycle interchange improvements, such as squared up ramps, install Class I or IV bikeways, add signage and striping to mark bicycle conflict points and remove free right turns.	Tier	0	0	3
Mar-101-NX07	Marin	101	San Rafael	Interchange improvements - Class I	Miller Creek Rd	Improve connectivity to existing Class I multi use path through the interchange and bus stops. Consider increasing sidewalk width to meet the standards of a class I, install RRFB at on ramp/off ramps and improve bus stop amenities.	Tier	1	0	0
Mar-101-X01	Marin	101	Marin City	Interchange improvements - Class IV	Donahue St	Provide bike lanes on Donahue Street to support bicyclists crossing under US 101, and to provide access to the Mill Valley Sausalito Path east of Bridgeway	Tier	2	3	3
Mar-101-X02	Marin	101	Unincorporated	Interchange improvements - Class I	Alexander Rd - Vista Pt Trail	Provide Class I path along US 101 from Vista Point to Alexander Ave in conjunction with interchange crossing improvements, consistent with FHWA Alexander Avenue Planning Study. Provide Class I along Alexander Ave to Conzelman Rd and at undercrossing.	Tier	2	2	0

Num	County	Route	City	Improvement Type	Location	Description	Tier	Mobility Score	Safety Score	Equity Score
Mar-101-X03	Marin	101	Corte Madera	New separated crossing	Casa Buena Dr	TAM proposes crossing to provide more direct connection between residential neighborhoods, and avoid traffic at Tamalpais Interchange and Wordum-Redwood Highway. Crossing could utilize existing topography (hill on Casa Buena side) to minimize ramp length	Tier	2	3	0
Mar-101-X04	Marin	101	Corte Madera	Interchange improvements - Class I	Tamalpais Dr	Reconfigure intersection to eliminate high-speed ramp entries. Provide Class I on north side of Tamalpais Drive to improve access across the highway.	Tier	2	0	0
Mar-101-X05	Marin	101	Larkspur	Interchange improvements - Class I	Sir Francis Drake Blvd E	Improve existing Class I path that connects Sir Francis Drake Blvd with Lucky Drive on the west side of 101.	Tier	2	2	0
Mar-101-X06	Marin	101	San Rafael	Interchange improvements - Class IV	4th St	Explore Class IV facilities on 4th Street with improved intersections on Heatherton (Caltrans jurisdiction) and Irwin (City of San Rafael jurisdiction) as described in the San Rafael Bike Ped Master Plan	Tier	3	2	1
Mar-101-X07	Marin	101	San Rafael	Interchange improvements - Class IV or I	N San Pedro Rd	Reconstruction of ramps to eliminate freeflow auto movements on to US 101 ramps. Provide Class IV or I bikeways on San Pedro Rd thru interchange.	Tier	2	2	3
Mar-101-X08	Marin	101	San Rafael	Interchange improvements - Class IV or I	Lucas Valley Rd	Explore reconfiguring ramps to eliminate high speed entry and exit. TAM BPAC emphasizes challenge of getting from Park & Ride to west side of freeway. Currently has poor lighting and poor pavement conditions.	Tier	2	0	1
Mar-101-X09	Marin	101	Novato	Interchange improvements - Class IIB	Ignacio Blvd	Improve bicyclist comfort on Ignacio Boulevard across 101 to facilitate access to planned Class I in rail corridor on the east side. TAM BPAC notes this is high need for school children.	Tier	2	1	1
Mar-101-X10	Marin	101	Novato	Interchange improvements - Class I or IV	Rowland Blvd	US 101 CMP recommends to consider adding separated facility on Rowland Boulevard	Tier	1	0	1
Mar-101-X11	Marin	101	Unincorporated	Interchange improvements - Class IIB or IV	Shoreline Hwy	Currently an interchange with high volume, high speeds, and collisions. Explore ramp reconfiguration and signalization, accommodate bike/ped movements through interchange including connection bike path with bus stop.	Tier	2	3	0
Mar-101-X12	Marin	101	Novato	New separated crossing	Redwood Blvd	Add separated crossing of US 101/Hwy 37 interchange, Novato Blvd Bike Path across US 101. No comfortable crossing between Ignacio Blvd and Rowland Blvd in Novato (2 miles)	Tier	2	0	1
Mar-131-C01	Marin	131	Strawberry, Tiburon	Corridor Improvement- Class I	Strawberry Dr - Greenwood Cove Rd	Proposed Class I Path on the west side of Tiburon Boulevard between Greenwood Cove Road and Strawberry Drive. Project proposed in the 2012 Town of Tiburon Bay Trail Gap Study. Cyclists currently travel in the opposite direction on this short stretch.	Tier	2	0	0
Mar-131-C02	Marin	131	Tiburon	Corridor Improvement- Class IV	US 101 - Blackie's Pasture	Provide Class IV along Hwy 131 from US 101 to Tiburon	Tier	3	2	0
Mar-131-C03	Marin	131	Tiburon	Corridor Improvement- Class IV	Blackie's Pasture - Main St	Provide Class IV along Hwy 131 from US 101 to Tiburon	Tier	2	0	0
Mar-131-NX01	Marin	131	Tiburon	Intersection improvement at uncontrolled intersection	Gilmartin Dr	Install intersection improvements, such as a pedestrian hybrid beacon, or full signal.	Tier	1	0	0
Mar-580-C01	Marin	580	San Rafael	Corridor Improvement- Class IV	2nd St - Main St	Install Class IV bikeway on Francisco Blvd E parallel to I-580 to provide connectivity through Canal Neighborhood. To connect Grand Ave bridge, SF Bay Trail and Richmond San Rafael Bridge Path.	Tier	3	3	3

Num	County	Route	City	Improvement Type	Location	Description	Tier	Mobility Score	Safety Score	Equity Score
Mar-580-NX01	Marin	580	Unincorporated	New separated crossing	Andersen Dr/ Sir Francis Drake	Install new separated crossing or other low stress crossing to help cyclists cross Sir Francis Drake and navigate to the Richmond San Rafael Bridge.	Tier	2	0	3
Mar-580-X01	Marin	580	San Rafael	Interchange improvements - Class IV	Bellam Blvd	Install bicycle interchange improvements, such as square up ramps, install Class IV bikeways, add signage and striping to mark bicycle conflict points and remove free right turns.	Tier	3	3	3
Mar-580-X02	Marin	580	San Rafael	Interchange improvements - Class IV	Main St - I-580 Bridge landing	Provide Class IV facility at interchange. Install a truck turning apron at the off ramp.	Tier	2	0	3
Mar-101,131-X01	Marin	101,131	Strawberry, Alto	Interchange improvements - Class I or IV	US 101/Hwy 131 interchange	Provide Class I or IV bikeway through US 101/Hwy 131 interchange as part of reconstructing the interchange eliminate high speed ramp entries.	Tier	2	3	0
MaSon-1-C01	Marin, Sonoma	1	Unincorporated	Corridor Improvement - Class I	Valley Ford Rd - Dillon Beach Rd	Proposed bicycle facilities on Highway 1 either Class III or Class II as proposed in the Draft Marin County Bicycle and Pedestrian Plan (2017). Use the "widen where feasible approach" that provide additional shoulder area along where feasible as part of	Tier	1	0	0
Nap-29-C01	Napa	29	Unincorporated	Corridor Improvement - Class II	Tubbs Ln - Napa/Lake County line	Provide bike lanes on Hwy 29 from Tubbs Ln to Lake County border	Tier	1	0	0
Nap-29-C02	Napa	29	Unincorporated	Corridor Improvement - Class II	Silverado Trl - Tubbs Ln	Provide class II bicycle lanes on SR 29	Tier 2	1	0	3
Nap-29-C03	Napa	29	Calistoga	Corridor Improvement - Class I	Washington St - Silverado Trail	Class I Multi use path on SR 29 through Calistoga as proposed in the Napa Countywide Bike Plan (2019)	Tier	1	3	3
Nap-29-C04	Napa	29	Unincorporated	Corridor Improvement - Class II	Dunawee Ln - Tubbs Ln	Provide Class II bicycle lanes on SR 29 as proposed in the Napa Countywide Bike Plan (2019). Provide Interim treatment w/ signage & striping.	Tier	1	3	3
Nap-29-C05	Napa	29	Napa	Corridor Improvement - Class I	Stanly Ln - Vista Point Dr	Planned Class I path along Napa River and connecting to Vista Point Drive on either side, including crossing on the Butler bridge.	Tier	1	0	2
Nap-29-C06	Napa	29	Unincorporated	Corridor Improvement - Class I	Soscol Ferry Rd - Airport Blvd	Provide Class I on Hwy 29 from Airport Blvd to Soscol Ferry Rd	Tier	2	2	2
Nap-29-C07	Napa	29	American Canyon	Corridor Improvement - Class I	American Canyon Rd - Paoli Loop Rd	Provide Class I on both sides of Hwy 29 through American Canyon. Partially apart of project 4Q010. Completed PSR.	Tier	2	1	2
Nap-29-NX01	Napa	29	American Canyon	Undercrossing improvement - Class I	Paoli Loop Rd	Planned Class I Multi Use Path to connect with Vine Trail in Napa Countywide Bicycle Plan	Tier	1	0	2
Nap-29-NX02	Napa	29	American Canyon	Intersection improvement at controlled intersection	W American Canyon Rd	Install intersection improvements, either a protected intersection, signal separated crossing or roundabout with Class IV/Class I to connect with proposed Class I on Hwy 29 as part of project 4Q010	Tier	2	3	2
Nap-29-X02	Napa	29	St. Helena	Intersection Improvement at controlled intersection	Mitchell Dr/Pope St	Provide bike boxes, green markings, and bike lanes thru offset intersection of Mitchell Dr/Pope St and Hwy 29	Tier	1	0	1
Nap-29-X03	Napa	29	Unincorporated	Intersection Improvement at controlled intersection	Oak Knoll Ave	Provide signage, bike boxes and related improvements to better connect Oak Knoll Ave to the Vine Trail across Hwy 29	Tier	1	0	1
Nap-29-X04	Napa	29	Napa	Intersection Improvement at controlled intersection	Salvador Ave	Class I path on west side of SR 29	Tier 2	1	0	1
Nap-29-X05	Napa	29	Napa	Intersection Improvement at controlled intersection	Wine Country Ave	Class I path along west side of SR 29	Tier 2	1	0	1
Nap-29-X06	Napa	29	Napa	Intersection Improvement at controlled intersection	Trower Rd	Install trail crossing improvements for Class I path on west side of SR 29. Evaluate slip lane removal.	Tier	2	3	1

Num	County	Route	City	Improvement Type	Location	Description	Tier	Mobility Score	Safety Score	Equity Score
Nap-29-X07	Napa	29	Napa	Interchange improvements - Class IV	Trancas Rd/Redwood Rd	Provide Class IV bikeways on Trancas Rd/Redwood Rd interchange with Hwy 29. Include conflict/ turn marking throughout. Coordinate with the City on connectivity beyond Caltrans ROW.	Tier	2	3	2
Nap-29-X08	Napa	29	Napa	Interchange improvements - Class II	1st St	Provide bike lanes on 1st Street interchange with Hwy 29 from NB on/off ramp to SB on/off ramp. Coordinate with City to connect with City ROW.	Tier	2	0	3
Nap-29-X09	Napa	29	Napa	Overcrossing improvements - Class II	Old Sonoma Rd	Stripe bike lanes on Old Sonoma Rd overcrossing at Hwy 29. Coordinate with City on improvements beyond Caltrans ROW, including conflict markings.	Tier	1	0	3
Nap-29-X11	Napa	29	Napa	Interchange improvements - Class IV	Imola Ave W	Install bicycle interchange improvements, such as square up ramps, install Class IV bikeways, add signage and striping to mark bicycle conflict points and remove free right turns. Install RRFBS, and potentially install truck turning apron.	Tier	2	2	1
Nap-29-X12	Napa	29	American Canyon	Intersection Improvement at controlled intersection	Rio Del Mar	Implement signal/intersection improvements to support bicyclist left turns, such as a protected intersection or a bicycle only signal phase to connect to future Class I along Hwy 29. Evaluate bridge to connect with shopping center.	Tier	1	0	2
Nap-121-C01	Napa	121	Napa	Corridor Improvement - Class II	Trancas St - Vicky Ave	Complete Class II bike lanes on Hwy 121 from Soscol Ave to Vicky Ave. Widen narrow bike lanes and add buffer with rumble strips where possible.	Tier	2	1	0
Nap-121-C01	Napa	121	Napa	Corridor Improvement - Class II	Soscol Ave - Vicky Ave	Complete Class II bike lanes on Hwy 121 from Soscol Ave to Vicky Ave. Widen narrow bike lanes and add buffer with rumble strips where possible.	Tier	2	1	3
Nap-121-C02	Napa	121	Moskowite Corner, Silverado Resort, Vichy Springs	Corridor Improvement - Shoulder improvements	Hwy 128 - Atlas Peak Rd	Improve shoulder on Hwy 121 from Vichy Springs to Hwy 128	Tier	1	3	0
Nap-121-C03	Napa	121	Unincorporated	Corridor Improvement - Class IV	Duhig Rd - Old Sonoma Rd	Class I or IV on Hwy 12 from Duhig Rd to Old Sonoma Rd with intersection improvements to aid bicyclists traveling through this corridor	Tier	1	0	0
Nap-121-NC01	Napa	121	Napa	Corridor Improvement - Class IV	S Freeway Dr - Soscol Ave	Provide Class IV bikeways on Imola Ave. Imola Ave Corridor Complete Streets Improvement Plan (2020)	Tier	3	3	3
Nap-121-NC02	Napa	121	Napa	Corridor Improvement - Class I or IV	Lincoln Ave - Trancas St	Provide a Class IV, Class I or a combination of the two to provide connectivity to Silverado Trail.	Tier	2	1	0
Nap-121-X01	Napa	121	Napa	Intersection Improvement at uncontrolled intersection	Minahen St	Square up the intersection, install bulb-outs and median refuge islands. Consider providing a pedestrian hybrid beacon or pedestrian signal at Minahen St as detailed in the Imola Ave Corridor Plan.	Tier	2	0	1
Nap-121-X02	Napa	121	Napa	Intersection Improvement at controlled intersection	Stanly Ln	Improve crossing of Hwy 12 at Stanley Ln, potential square intersection to reduce crossing lengths and provide clearer space for bicyclists and pedestrians.	Tier	1	0	1
Nap-121-X03	Napa	121	Napa	Intersection Improvement at controlled intersection	Silverado Trail/3rd/East/Coombsville	Improve 5-way intersection. Consider a roundabout, Class IV or other similar improvement that supports bicycling.	Tier	1	0	3
Nap-128-C01	Napa	128	Unincorporated	Corridor Improvement - Class II	Tubbs Ln - Napa/Sonoma County border	Provide Class II bike lanes on Hwy 128 from Tubbs Ln to Sonoma County border	Tier	1	0	0
Nap-128-C02	Napa	128	Moskowite Corner	Corridor Improvement - Shoulder improvements	Steele Canyon Rd	Provide signage and other improvements at junction of Hwy 128 and Hwy 121	Tier	1	0	0
Nap-128-C03	Napa	128	Moskowite Corner	Corridor Improvement - Shoulder improvements	Hwy 128 - Lake Berryessa	Provide shoulder improvements on Hwy 128 from Hwy 128 to Lake Berryessa, include Class III green-back shoulders at blind corners or other locations based on local feedback.	Tier	1	1	1

Num	County	Route	City	Improvement Type	Location	Description	Tier	Mobility Score	Safety Score	Equity Score
Nap-128-C04	Napa	128	Unincorporated	Corridor Improvement-Shoulder improvements	Chiles Pope Valley Rd - Monticello Rd	Provide shoulder treatments or similar improvements on Hwy 128 from Chiles Pope Valle Rd to Monticello Rd (Hwy 121). Include Class III green-back sharrow ³ at blind corners or other locations based on local feedback.	Tier	1	0	1
Nap-128-C05	Napa	128	Rutherford	Corridor Improvement-Class II	Silverado Trl S Hwy 29/St Helena Hwy	Install Class II bicycle lanes on SR 128 to increase county connectivity.	Tier	1	0	1
Nap-128-C06	Napa	128	St Helena	Corridor Improvement-Class IV	Sage Canyon Rd Conn Creek Rd	When Silverado Trail bridge over Conn Creek is replaced, add Class IV or Class I facilities to better accommodate bicyclists turning from Safe Creek Road on to Silverado Trail. Short term improvements could include traverse rumble strips.	Tier	1	2	1
Nap-128-C07	Napa	128	St Helena	Corridor Improvement-Class II	Silverado Trail - Chiles Pope Valley Rd	Provide Class II bike lanes on Hwy 128 from Silverado Trail to Chiles Pope Valley Rd. This route is a popular recreational route.	Tier	1	2	1
Nap-128-X01	Napa	128	Unincorporated	Intersection Improvement at uncontrolled intersection	Chiles Pope Valley Rd	Class III bicycle route on SR 128	Tier 3	0	0	0
Nap-128-X02	Napa	128	Unincorporated	Intersection Improvement at uncontrolled intersection	Silverado Trl S	Improve crossing of Hwy 128 where it turns from Conn Creek Rd on to Silverado Trail, including evaluating potential for a two way Class I or Class IV facility on the north side.	Tier	0	3	1
Nap-221-C01	Napa	221	Napa	Corridor Improvement-Class I	Imola Ave - Hwy 12	Planned Class I multi use path adjacent to Hwy. Interim improvement to provide buffered bike lanes or Class IV bikeways on Hwy 221.	Tier	3	0	3
Nap-221-X01	Napa	221	Unincorporated	Intersection Improvement at controlled intersection	Streblow Dr	Mark bicycle crossings, improve access to River to Ridge trail, and remove slip lanes from Streblow Dr on to Hwy 221Add ADA curb ramp and high visibility crosswalk. Consider adding a median refuge island.	Tier	1	0	3
Nap-221-X02	Napa	221	Napa	Intersection Improvement at controlled intersection	Magnolia Dr	Provide intersection markings and bicycle turn boxes on Hwy 221 at Magnolia Dr	Tier	1	0	3
Nap-121,221-X01	Napa	121,221	Napa	Intersection Improvement at controlled intersection	Imola Ave/Hwy 121	Remove slip lanes, improve bicycle markings, and provide access to planned path on SE corner of intersection.	Tier	2	0	3
NaSol-12-C01	Napa,Solano	12	Unincorporated	Corridor Improvement-Class I	Hwy 29 - Napa/Solano County border	Provide Class I path along Hwy 12 from jct with Hwy 29 to Solano County border (near Creston)	Tier	2	0	2
SF-80-NC01	San Francisco	80	San Francisco	Corridor Improvement-Class I	Eastern Span to Yerba Buena Island	Touchdown of Bay Bridge East Span on Yerba Buena Island. MTC lead project.	Tier	3	0	3
SF-80-NC02	San Francisco	80	San Francisco	Corridor Improvement-Class I	Western Span to Yerba Buena Island	Touchdown of Bay Bridge West Span on Yerba Buena Island	Tier	3	0	3
SF-1-NX01	San Francisco	1	San Francisco	Intersection Improvement at controlled intersection	Vicente St	Provide bicycle accommodation on Vicente Street through the intersection of 19th Avenue (Hwy 1). Consider installing a protected intersection.	Tier	3	0	1
SF-1-NX02	San Francisco	1	San Francisco	Intersection Improvement at controlled intersection	Anza St	Improve crossing as Anza St. Consider adding a protected intersection.	Tier	3	2	1
SF-1-NX03	San Francisco	1	San Francisco	Potentially repurpose existing structure for bike/ped access	Alemanly Blvd	Local plan may recommend safety improvements to Alemanly Boulevard interface. Interchange recommendations from local SF Streets And Freeways Strategy could complete interchange at Brotherhood and Highway 1, allowing movements currently only available here	Tier	3	0	1
SF-1-X01	San Francisco	1	San Francisco	Intersection improvement at controlled intersection	Lake St	Improve crossing and address issues with people biking turning onto highway 1.	Tier	3	0	1

Num	County	Route	City	Improvement Type	Location	Description	Tier	Mobility Score	Safety Score	Equity Score
SF-1-X02	San Francisco	1	San Francisco	New separated crossing	Brotherhood Way	Create a new separated crossing, also a priority for the City. Further recommendations to be determined by SFCTA's Brotherhood Way Safety.	Tier	3	0	2
SF-1-X03	San Francisco	1	San Francisco	Intersection improvement at controlled intersection	Fulton St	At intersection with Fulton, bike path from the park meets the roadway. Consider right turn phase and bike signal. Also improve crossing for bicyclists on Fulton St	Tier	3	1	1
SF-1-X05	San Francisco	1	San Francisco	Intersection improvement at controlled intersection	Kirkham St	Continue Kirkham Street Class II bicycle lane through the intersection of 19th Avenue.	Tier	3	0	1
SF-1-X06	San Francisco	1	San Francisco	Intersection improvement at controlled intersection	Ortega St	Provide bicycle accommodation on Ortega Street through the intersection of 19th Avenue (Hwy 1).	Tier	3	0	1
SF-35-C01	San Francisco	35	San Francisco	Corridor Improvement- Class IIB	19th Ave - Skyline Blvd	Implement corridor improvements, potentially upgrading bike lanes to Class IV.	Tier	3	1	1
SF-35-C02	San Francisco	35	San Francisco	Corridor Improvement- Class IIB	Sloat Blvd - San Francisco/San Mateo county line	Provide bike lanes on Skyline Boulevard, potentially removing slip lanes. Consider the signalization of Skyline southbound left turn onto eastbound Lake Merced boulevard.	Tier	3	2	1
SF-35-NC01	San Francisco	35	San Francisco	Corridor Improvement- Class IV	19th Ave - 21st Ave	Explore installing a two way Class IV to connect cyclists traveling from San Francisco to Stern Grove.	Tier	3	0	1
SF-35-X03	San Francisco	35	San Francisco	Interchange improvements - Class II	Sunset Blvd	Improve bicycle facilities at existing interchange.	Tier	3	0	1
SF-35-X04	San Francisco	35	San Francisco	Intersection improvement at controlled intersection	34th Ave/Clearfield Dr	Improve crossings and intersection with 34th Avenue/Clearfield Drive to provide access to Ocean Avenue.	Tier	3	0	1
SF-35-X05	San Francisco	35	San Francisco	Intersection improvement at controlled intersection	21st Ave	Consider a two stage turn box to accompany new signal being installed at Sloat Boulevard and 21st Ave.	Tier	3	0	1
SF-35-X06	San Francisco	35	San Francisco	Intersection improvement at controlled intersection	20th Ave	Explore the option for a bicycle path through existing median with a bike signal tied into the 19th Avenue and Sloat Boulevard intersection.	Tier	3	0	1
SF-80-NX04	San Francisco	80	San Francisco	Interchange improvements	Essex St/ Harrison St	Improve bicycle and pedestrian accommodations at US 80 interchange at Essex St/ Harrison St. Near-term recommendations identified by SFCTA Vision Zero Ramps Phase II study.	Tier	3	0	1
SF-80-C01	San Francisco	80	San Francisco	Corridor Improvement- Class I	SF touchdown to Yerba Buena Island	New separated Class I between Yerba Buena Island and Downtown San Francisco. MTC lead project, completed initial study.	Tier	3	0	3
SF-80-NX01	San Francisco	80	San Francisco	Interchange improvements - Class IV	5th/ I-80	Protected crossing improvements for existing Class IV quick-build bikeways on 5th St crossing freeway ramps on Bryant and Harrison	Tier	3	2	2
SF-80-NX02	San Francisco	80	San Francisco	Interchange improvements - Class IV	7th	Upgrade existing Class IV to more permanent materials	Tier	3	2	2
SF-80-NX03	San Francisco	80	San Francisco	Interchange improvements - Class IV	Bryant St/ 8th St/ I-80	Upgrade existing Class IV to more permanent materials	Tier	3	0	2
SF-82-C01	San Francisco	82	San Francisco	Corridor Improvement- Class IV	San Jose Ave	Corridor improvement Class IV facility crosses existing Class II facility on Alemany Boulevard. Further recommendations to be determined by SFCTA Vision Zero Ramps Phase III Study.	Tier	3	1	3
SF-101-NC01	San Francisco	101	San Francisco	Corridor Improvement- Class IV	Folsom St - Valencia St	Corridor improvement Class IV facility on 13th St under US-101	Tier	3	3	3
SF-101-NX01	San Francisco	101	San Francisco	Interchange improvements - Class IV	South Van Ness/ 13th St	Improve intersection and address conflicts as depicted in SOMA Freeway Ramp Safety Study	Tier	3	3	3
SF-101-NX02	San Francisco	101	San Francisco	Intersection Improvement at controlled intersection	Otis/ Mission/ 13th	Improve intersection and address conflicts as depicted in SOMA Freeway Ramp Safety Study	Tier	3	3	3
SF-101-NX03	San Francisco	101	San Francisco	Intersection Improvement at controlled intersection	Lombard St /Octavia St	Improve intersection for bicyclists crossing 101	Tier	3	1	0

Num	County	Route	City	Improvement Type	Location	Description	Tier	Mobility Score	Safety Score	Equity Score
SF-101-NX04	San Francisco	101	San Francisco	Undercrossing improvements - Class IV	17th St	Upgrade existing Class II to Class IV bikeways. Further recommendations to be determined by SFCTA Vision Zero Ramps Phase III study.	Tier	3	0	2
SF-101-NX05	San Francisco	101	San Francisco	Intersection Improvement at controlled intersection	Grove St/ Van Ness	Improve intersection for bicyclists crossing Van Ness	Tier	3	3	3
SF-101-NX06	San Francisco	101	San Francisco	Intersection Improvement at controlled intersection	McAllister St/ Van Ness	Improve intersection for bicyclists crossing Van Ness	Tier	3	2	3
SF-101-NX07	San Francisco	101	San Francisco	Intersection Improvement at controlled intersection	Broadway/ Van Ness	Improve intersection for bicyclists crossing Van Ness	Tier	3	2	1
SF-101-NX08	San Francisco	101	San Francisco	Interchange improvements - Class IV	Bayshore Blvd and Hester Ave	Improve bicycle accommodations at US 101 interchange at Bayshore Blvd. Upgrade bike lane to a Class IV, add green conflict striping. Near-term recommendations to be determined by SFCTA Vision Zero Ramps Phase III study.	Tier	3	3	3
SF-101-NX09	San Francisco	101	San Francisco	Interchange improvements - Class II	Mansell St	Improve bicycle accommodations at US 101 interchange at Mansell St. Upgrade Class III to a Class II bike lane, add green conflict striping. Near-term recommendations to be determined by SFCTA Vision Zero Ramps Phase III study.	Tier	2	0	2
SF-101-NX10	San Francisco	101	San Francisco	Interchange improvements - Class IV	Silver Ave	Improve bicycle accommodations at US 101 interchange at Silver St. Explore options to install a Class IV separated bike lane, add green conflict striping.	Tier	2	0	3
SF-101-NX11	San Francisco	101	San Francisco	Interchange improvements	Silliman St/ San Bruno Ave	Improve bicycle and pedestrian accommodations at US 101 interchange at Silliman St/ San Bruno Ave. Near-term recommendations to be determined by SFCTA Vision Zero Ramps Phase III study.	Tier	2	0	3
SF-101-X01	San Francisco	101	San Francisco	Interchange improvements - Class I or IV	Cesar Chavez St	Improve Bike/ped facilities through interchange as described in Cesar Chavez/Potrero Ave/Bayshore Blvd Intersection Improvements (The Hairball). VZ Ramps Phase 3 Study to provide improvement recommendations.	Tier	3	3	2
SF-101-X02	San Francisco	101	San Francisco	Interchange improvements - Class I	Alemanly Blvd	Upgrade existing Class II to Class IV, and upgrade existing Class IV protection to more permanent materials	Tier	3	1	3
SF-280-NX01	San Francisco	280	San Francisco	Interchange improvements - Class IV	Ocean Ave	Upgrade to Class IV bikeways, add green conflict markings. Further recommendations to be determined by SFCTA Vision Zero Ramps Phase III study.	Tier	3	3	3
SF-280-NX02	San Francisco	280	San Francisco	Interchange improvements - Class IV	Brannan St/ 6th St	Explore installing a protected intersection at Brannan St and 6th St.	Tier	3	1	2
SF-280-NX03	San Francisco	280	San Francisco	Interchange improvements - Class IV	Monterey Blvd/ 280 ramps	Improve interchange. Cyclists report signage is confusing, a fatal collision occurred here due to a cyclists erroneously biking onto the freeway. Add green conflict striping. Further recommendations to be determined by SFCTA Vision Zero.	Tier	3	0	2
SF-280-NX04	San Francisco	280	San Francisco	Intersection improvement at uncontrolled intersection	San Jose Ave and Sadowa	Improve uncontrolled crossing. Near-term recommendations to be determined by SFCTA Vision Zero Ramps Phase III study.	Tier	3	0	3
SF-280-NX05	San Francisco	280	San Francisco	Interchange improvements - Class IV	Crescent Ave/ Putnam St/ Alemany Blvd	Improve bicycle accommodations at US 101 interchange at Crescent Ave/ Putnam St/ Alemany Blvd.	Tier	2	1	1
SF-280-X01	San Francisco	280	San Francisco	Interchange improvements - Class IV	Cesar Chavez St	Improve bicycle accommodations at I-280 interchange along Cesar Chavez Street. Upgrade bike lane to a Class IV, add green conflict striping.	Tier	3	2	0

Num	County	Route	City	Improvement Type	Location	Description	Tier	Mobility Score	Safety Score	Equity Score
SF-280-X02	San Francisco	280	San Francisco	Interchange improvements - Class IV	Ocean Ave/Geneva Ave	I-280 ramps intersect with existing bicycle facilities on Ocean Avenue and Geneva Avenue. Explore potential for Class IV bicycle facility upgrades. Further recommendations can be found at the Ocean Ave Mobility Plan and Balboa Park Circulation Study.	Tier	3	2	3
SF-280-X03	San Francisco	280	San Francisco	Interchange improvements - Class IIB	Mariposa St	Improve existing Class III facility on Mariposa Street near the I-280 ramps.	Tier	3	0	0
SF-280-X04	San Francisco	280	Daly City	New separated crossing	Saint Charles Ave	Class III bike facility planned on St. Charles Avenue from Niantic Avenue to I-280 by San Mateo County.	Tier	3	0	3
SF-1,35-X01	San Francisco	1,35	San Francisco	Intersection Improvement at controlled intersection	Sloat Blvd/19th Ave	Improve existing Class III facility by extending markings through the intersection on Sloat Boulevard crossing 19th Avenue.	Tier	3	2	1
SM-1-C01	San Mateo	1	Half Moon Bay	Corridor Improvement - Class I	Medio Ave - Higgins Canyon Rd	Install Class I facility on both side of SR 1. Improve intersection crossings by installing wide curb ramps and refuge median islands.	Tier	2	3	1
SM-1-C03	San Mateo	1	Unincorporated	Corridor Improvement - Class I	Gray Whale Cove parking area - Devils Slide Trail	Provide a Class I connection from Grey Whale Cove to Devils Slide Trail along Hwy 1	Tier	1	0	1
SM-1-C04	San Mateo	1	Pacifica	Corridor Improvement - Class I	San Pedro Ave - Devils Slide Trail	Provide Class I connection from Pacifica to Devils Slide Trail along Hwy 1 or other option	Tier	2	2	0
SM-1-C05	San Mateo	1	Montara, Half Moon Bay	Corridor Improvement - Class I	Grey Whale Cove - Half Moon Bay Airport	Provide Class I path in Hwy 1 ROW	Tier 2	2	3	0
SM-1-C06	San Mateo	1	San Gregorio	Corridor Improvement - Class I	Cowell- Purisma Trailhead - San Gregorio Beach parking lot	Provide a Class I path in Hwy 1 ROW from Cowell- Purisma Trailhead to San Gregorio Beach parking lot	Tier	2	3	0
SM-1-NC01	San Mateo	1	Unincorporated	Corridor Improvement - Class I	Marine Blvd - Coronado Ave	Provide a Class I trail on both sides of Hwy 1	Tier	2	2	0
SM-1-NC07	San Mateo	1	Pacifica	Corridor Improvement - Class I	Fassler Ave - Westport St	Provide a Class I trail along Hwy 1 as a long term project. As an interim project, widen shoulders and provide a rumble strip buffered bike lane	Tier	1	3	0
SM-1-NC08	San Mateo	1	Unincorporated	Corridor Improvement - Class I	Wavecrest Rd - Cowell- Purisma Trailhead	Provide a Class I trail along Hwy 1 as a long term project. As an interim project, widen shoulders and provide a buffered rumble strip separated bike lane	Tier	1	0	0
SM-1-NX01	San Mateo	1	Pacifica	Intersection improvement at controlled intersection	Linda Mar Blvd	Replace curb ramp with a wider ramp. Curb ramps at trail crossings should be the width of the trail, per the HDM section 1003.1 Add median refuge islands where possible.	Tier	1	3	0
SM-1-X01	San Mateo	1	Pacifica	Interchange improvements - Class IIB	Sharp Park Rd	Potential San Mateo County project to improve crossing at Sharp Park Road/Highway 1 interchange.	Tier	1	0	0
SM-1-X02	San Mateo	1	Pacifica	Interchange improvements - Class IIB	Palmetto Ave	Potential San Mateo County project to install Class II bike lane on Palmetto Avenue between Avalon Drive and SR 35.	Tier	2	0	0
SM-1-X03	San Mateo	1	Half Moon Bay	Intersection improvement at controlled intersection	Kelly Ave	Half Moon Bay Bike and Ped Plan identified Kelly Avenue and SR 1 intersection as a high priority crossing improvement. Install High Visibility Crosswalks and Lead Pedestrian Intervals. Recommended: consider protected intersection	Tier	1	3	1
SM-1-X04	San Mateo	1	Half Moon Bay	Intersection Improvement at controlled intersection	Poplar St	Potential San Mateo County project to improve crossing at Poplar Street and SR 1 intersection.	Tier	1	0	0
SM-1-X05	San Mateo	1	El Granada	Intersection Improvement at controlled intersection	Capistrano Rd	Potential San Mateo County project to install Class III bike route on Capistrano Road between Prospect Way and SR 1. Also improve crossing at Capistrano Road and SR 1 intersection.	Tier	1	0	0

Num	County	Route	City	Improvement Type	Location	Description	Tier	Mobility Score	Safety Score	Equity Score
SM-1-X06	San Mateo	1	Half Moon Bay	Intersection Improvement at controlled intersection	Hwy 92	Potential San Mateo County project to improve crossing at SR 1 and SR 92 intersection. Crossing improvement location identified in Half Moon Bay Bike/Ped Plan. Consider protected intersection at this location.	Tier	1	2	1
SM-1-X07	San Mateo	1	Moss Beach	Intersection improvement at uncontrolled intersection	Carlos St	Potential San Mateo County project to install Class II bike lanes on Carlos Street from SR 1 to Vermont Avenue.	Tier	1	0	0
SM-1-X08	San Mateo	1	Moss Beach, El Granada	Intersection Improvement at uncontrolled intersection	Capistrano Rd	Potential San Mateo County Project to improve crossing at Capistrano and SR 1 intersection. Consider closing or reconfiguring free right turn lane.	Tier	1	0	0
SM-1-X09	San Mateo	1	El Granada	Intersection Improvement at controlled intersection	Coronado St	Potential San Mateo County project to improve crossing at Coronado Street and SR 1 intersection.	Tier	1	0	0
SM-1-X10	San Mateo	1	Moss Beach	Intersection improvement at uncontrolled intersection	Cypress Ave	Potential San Mateo County project to improve crossing at Cypress Avenue and SR 1 intersection.	Tier	1	0	0
SM-1-X11	San Mateo	1	Moss Beach	Intersection improvement at uncontrolled intersection	Half Moon Bay Airport entrance	Potential San Mateo County project to improve crossing at Half Moon Bay Airport and SR 1 intersection.	Tier	1	0	0
SM-1-X12	San Mateo	1	El Granada	Intersection improvement at uncontrolled intersection	Mirada Rd	Potential San Mateo County project to improve crossing at Mirada Road and SR 1 intersection	Tier	1	0	0
SM-1-X13	San Mateo	1	Half Moon Bay	Intersection improvement at controlled intersection	Higgins Canyon Rd	Half Moon Bay Bike Ped Plan identifies Higgins Canyon Rd at Hwy 1 to be a high priority crossing improvement. Identifies pedestrian hybrid beacon as a planned improvement.	Tier	1	2	0
SM-1-X14	San Mateo	1	Unincorporated	Intersection improvement at uncontrolled intersection	Gray Whale Cove	Provide flashing beacon, pedestrian hybrid beacon, or other improvement along Hwy 1 at Gray Whale Cove beach parking lot to connect to Gray Whale Cove State Beach. Primarily pedestrian focused crossing.	Tier	1	0	0
SM-1-X15	San Mateo	1	Montara Rd	Intersection improvement at uncontrolled intersection	2nd St	Provide flashing beacons or other advance warning for bicyclists crossing Hwy 1 at 2nd St in Montara	Tier	1	0	0
SM-1-X16	San Mateo	1	Montara Rd	Intersection improvement at uncontrolled intersection	7th St	Provide flashing beacons or other advance warning for bicyclists crossings of Hwy 1 at 7th St in Montara	Tier	1	0	0
SM-1-X17	San Mateo	1	Moss Beach	Intersection improvement at uncontrolled intersection	Virginia Ave	Provide Ped Hybrid Beacon or flashing beacons for an improved bike and ped crossing of Hwy 1 in Moss Beach - exact location TBD	Tier	1	0	0
SM-35-C01	San Mateo	35	Daly City	Corridor Improvement- Class IV	Shelbourne Ave - Hwy 1	Potential San Mateo County project to Class IV on Skyline Boulevard between where the shoulder widens and Gateway Drive.	Tier	3	0	1
SM-35-C02	San Mateo	35	San Bruno	Corridor Improvement- Class IV	Berkshire Dr - San Bruno Ave	Potential San Mateo County project to install Class IV facility. May need to consider Class II or Class I facility instead (existing parallel to Highway 35).	Tier	2	2	1
SM-35-C03	San Mateo	35	Pacifica, San Bruno	Corridor Improvement- Class II	Berkshire Dr - San Bruno Ave	Potential San Mateo County project to install Class II bike lane on Skyline Boulevard between bike path and Berkshire Drive.	Tier	3	2	1
SM-35-C04	San Mateo	35	Woodside	Corridor Improvement- Class II	Morse Ln - Hwy 84	Potential San Mateo County project to install Class II bicycle facilities on SR 35 from city boundary to SR 84.	Tier	1	3	0
SM-35-C05	San Mateo	35	Pacifica, San Bruno	Corridor Improvement- Class II	Sneath Ln - San Andreas Trail	City Bike Plan calls for Class II facilities on the existing shoulder. Considering upgrading to a Class I or Class IV facility to provide connection from Sneath Lane to the San Andreas Trail.	Tier	3	2	1

Num	County	Route	City	Improvement Type	Location	Description	Tier	Mobility Score	Safety Score	Equity Score
SM-35-NC01	San Mateo	35	Daly City	Corridor Improvement- Class IV	SF County Line - John Daly Blvd	Identified as a Countywide Bicycle Backbone Network 3	Tier	2	1	1
SM-35-NC02	San Mateo	35	Unincorporated	Corridor Improvement- Class I	Crystal Springs Trail Head - Hwy 92	Install Class I trail to connect with Crystal Springs Trail Head gap closure 2	Tier	2	3	0
SM-35-NX01	San Mateo	35	Daly City	Intersection improvement at controlled intersection	John Daly Blvd/ SR 35	Install a protected intersection, remove slip lanes. See conceptual designs in Walk Bike Daly City (pg 61) 2	Tier	2	2	1
SM-35-X01	San Mateo	35	Daly City	Intersection improvement at controlled intersection	Westmoor Ave	Potential San Mateo County project to install Class III on Westmoor Avenue between Southgate and Skyline Drive.	Tier	2	0	1
SM-35-X02	San Mateo	35	Daly City	Intersection Improvement at controlled intersection	Hickey Blvd	Potential San Mateo County project to install Class III on Hickey Boulevard between Skyline Boulevard and Highway 1.	Tier	2	0	3
SM-35-X03	San Mateo	35	Pacifica, San Bruno	Intersection Improvement at controlled intersection	Sharp Park Rd	Potential San Mateo County project to improve facilities on Skyline 3 Boulevard/Sharp Park Road intersection	Tier	2	0	1
SM-35-X04	San Mateo	35	San Bruno	Intersection Improvement at controlled intersection	San Bruno Ave	Potential San Mateo County project to install Class II on San Bruno Avenue between SR 35/Skyline Boulevard and Huntington Avenue	Tier	2	2	1
SM-82-C01	San Mateo	82	Daly City	Corridor Improvement- Class IV	John Daly Blvd - F St	Walk Bike Daly City recommends Class IV on Mission St through Daly City as a Tier I improvement	Tier	3	3	2
SM-82-C04	San Mateo	82	Belmont	Corridor Improvement- Class IV	North Rd - F St	Install Class IV along El Camino in Belmont City limits 2	Tier	3	2	1
SM-82-C05	San Mateo	82	San Bruno	Corridor Improvement- Class I	I-280 - El Camino Real	Class I multi-use path long-term project from San Bruno Walk and Bike Plan from Commodore Park to El Camino Real.	Tier	3	1	3
SM-82-C06	San Mateo	82	San Mateo	Corridor Improvement- Class IV	Baldwin Ave - 9th Ave	Improvements on El Camino Real per City Sustainable Streets Plan including a road diet removing a travel lane and converting to a Class IV separated bicycle facility. 2	Tier	3	2	1
SM-82-C08	San Mateo	82	Atherton, Menlo Park	Corridor Improvement- Class I	Atherton Ave - Encinal Ave	Proposed Class I two-way shared-use trail for southbound direction with planted buffer and enhanced bus stop per Town of Atherton Bicycle and Pedestrian Master Plan.	Tier	3	2	0
SM-82-C09	San Mateo	82	Redwood City	Corridor Improvement- Class IV	Cordilleras Creek to Berkshire Ave	Class IV on El Camino Real throughout Redwood City (~ Cordilleras Creek to Berkshire Ave). Priority project identified in Redwood City Walk Bike Thrive Plan (2022) and concept plans in Bike and Ped Safety Improvement Study El Camino Real	Tier	3	3	3
SM-82-C10	San Mateo	82	Atherton	Corridor Improvement- Class IV	Selby Ln - Encinal Ave	Construct Class IV bikeways on El Camino per El Camino Real Complete Streets Gap Closure (2022)	Tier	3	3	3
SM-82-C11	San Mateo	82	Menlo Park	Corridor Improvement- Class IV	Sand Hill Rd - Encinal Ave	Explore option of installing Class IV on El Camino to connect with planned adjacent jurisdiction's bikeways on El Camino.	Tier	3	3	0
SM-82-NC01	San Mateo	82	Colma	Corridor Improvement- Class IV	F St - Arlington Dr	Colma El Camino Pedestrian and Bicycle Improvement Plan recommends Class IV on El Camino though Colma	Tier	3	0	1
SM-82-NC02	San Mateo	82	South San Francisco	Corridor Improvement- Class IV	Arlington Dr - Noor Ave	Active South City Bike/Ped Master Plan recommends installing Class IV separated bikeways on El Camino	Tier	3	2	3
SM-82-NC03	San Mateo	82	San Bruno	Corridor Improvement- Class IV	Noor Ave - Santa Lucia	Explore option of installing Class IV on El Camino to connect with adjacent jurisdictions	Tier	3	2	3
SM-82-NC04	San Mateo	82	Millbrae	Corridor Improvement- Class IV	Santa Lucia - Millbrae Ave	Install Class IV on El Camino in City of Millbrae, as identified in the Millbrae Active Transportation Plan (2021)	Tier	3	2	3
SM-82-NC05	San Mateo	82	Burlingame	Corridor Improvement- Class IV	Millbrae Ave - Barroilhet Ave	Explore option of installing Class IV on El Camino to connect with adjacent jurisdictions	Tier	3	2	1
SM-82-NC06	San Mateo	82	San Mateo	Corridor Improvement- Class IV	Barroilhet Ave - Baldwin Ave	Explore option of installing Class IV on El Camino to connect with adjacent jurisdictions	Tier	3	1	1
SM-82-NC07	San Mateo	82	San Carlos	Corridor Improvement- Class IV	Eaton Ave - F St	Explore option of installing Class IV on El Camino to connect with planned adjacent jurisdiction's bike lanes on El Camino.	Tier	3	3	1

Num	County	Route	City	Improvement Type	Location	Description	Tier	Mobility Score	Safety Score	Equity Score
SM-82-NC08	San Mateo	82	San Mateo	Corridor Improvement- Class IV	9th Ave - North Rd	Explore option of installing Class IV on El Camino to connect with planned adjacent jurisdiction's bike lanes on El Camino.	Tier	3	3	1
SM-82-NX01	San Mateo	82	San Mateo	Intersection Improvement at controlled intersection	Notre Dame Ave/ 9th Ave/ El Camino Real	Bikeway recommendations along Notre Dame Avenue and 9th Avenue are offset from one another, creating a dogleg intersection that will require bicycle infrastructure treatments along the short segment of El Camino Real connecting the two streets.	Tier	2	3	0
SM-82-NX02	San Mateo	82	San Mateo	Intersection Improvement at controlled intersection	Barneson Ave/ 15th Ave/ El Camino Real	Bicycle boulevard recommendations along Barneson Avenue and 15th Avenue are offset from one another, creating a dogleg intersection that will require bicycle infrastructure treatments along the short segment of El Camino Real connecting the two street	Tier	3	0	1
SM-82-NX03	San Mateo	82	Redwood City	Intersection improvement at controlled intersection	James Ave	Improve bicycle crossing at James Ave. Explore adding a protected intersection or bike only signal phase.	Tier	3	3	3
SM-82-NX04	San Mateo	82	Menlo Park	Intersection improvement at controlled intersection	Oak Grove Ave	Install bicycle improvements such as a protected intersection	Tier	3	3	0
SM-82-X01	San Mateo	82	Daly City	Intersection improvement at controlled intersection	Market St	Install separated bikeway through intersection. Enlarge corner island on San Pedro to reduce crossing distance. See conceptual plan in Walk Bike Daly City page 62.	Tier	3	2	2
SM-82-X02	San Mateo	82	Colma	Intersection improvement at uncontrolled intersection	F St	Potential San Mateo County project to install Class III on F Street between El Camino Real and Hillside Boulevard	Tier	2	0	1
SM-82-X03	San Mateo	82	Colma	Intersection Improvement at controlled intersection	Serramonte Blvd	Potential San Mateo County project to install Class IV on Serramonte Boulevard between Hillside Boulevard and Gellert Boulevard.	Tier	2	0	1
SM-82-X04	San Mateo	82	South San Francisco	Intersection improvement at uncontrolled intersection	Arlington Dr	New uncontrolled crossing. Potential San Mateo County project to install Class I parallel to and crossing El Camino Real.	Tier	2	0	1
SM-82-X05	San Mateo	82	San Bruno	Intersection Improvement at controlled intersection	San Bruno Ave	Potential San Mateo County project to install Class II on San Bruno Avenue between SR 35/Skyline Boulevard and Huntington Avenue	Tier	3	0	3
SM-82-X06	San Mateo	82	Millbrae	Intersection improvement at controlled intersection	Center ST	Potential San Mateo County project to install Class III on Center Street between San Anselmo Avenue and Broadway	Tier	2	3	1
SM-82-X07	San Mateo	82	Millbrae	Intersection improvement at controlled intersection	Hillcrest Blvd	Potential San Mateo County project to install Class III on Hillcrest Boulevard between Broadway and Aviator	Tier	3	0	1
SM-82-X08	San Mateo	82	Millbrae, Burlingame	Intersection improvement at controlled intersection	Millbrae Ave	Potential San Mateo County project to install Class III on Millbrae Avenue between Magnolia Avenue and Old Baysshore	Tier	3	3	1
SM-82-X09	San Mateo	82	Burlingame	Intersection improvement at controlled intersection	Hillside Dr	Improve crossing at Hillside Drive	Tier 2	3	0	1
SM-82-X10	San Mateo	82	Burlingame	Intersection improvement at controlled intersection	Floribunda	Improve crossing at Floribunda	Tier 3	2	0	0
SM-82-X11	San Mateo	82	Burlingame	Intersection improvement at controlled intersection	Howard Ave	Improve crossing at Howard and El Camino Real intersection.	Tier	3	0	0
SM-82-X12	San Mateo	82	Daly City	Intersection improvement at controlled intersection	John Daly Blvd	Provide roundabout or Class IV at complex intersection	Tier	3	0	1
SM-82-X13	San Mateo	82	San Bruno	Intersection improvement at controlled intersection	Sneath Ln	Potential San Mateo County project to improve crossing at Sneath Lane/SR 82.	Tier	3	2	1

Num	County	Route	City	Improvement Type	Location	Description	Tier	Mobility Score	Safety Score	Equity Score
SM-82-X14	San Mateo	82	Menlo Park	New separated crossing	Middle Ave	Proposed undercrossing on Middle Avenue below El Camino Real per San Mateo County Bicycle and Pedestrian Master Plan.	Tier	3	3	0
SM-82-X15	San Mateo	82	Menlo Park	Intersection improvement at controlled intersection	Encinal Ave	Install bicycle intersection improvements	Tier 3	2	0	0
SM-82-X16	San Mateo	82	South San Francisco	Intersection Improvement at controlled intersection	Chestnut Ave	Potential San Mateo County project to improve crossing at Chestnut Avenue and Westborough Boulevard intersection.	Tier	2	3	3
SM-82-X17	San Mateo	82	Millbrae	Intersection Improvement at uncontrolled intersection	Linden Ave	Potential San Mateo County Project to construct Class II bike lanes on Linden Avenue between Millbrae Caltrain station and SR 82.	Tier	3	0	1
SM-82-X18	San Mateo	82	Redwood City	Intersection improvement at controlled intersection	Jefferson Ave	Bike lanes cross through intersection on Jefferson Avenue. Priority protected intersection location. Priority project location in Redwood City Walk Bike Thrive Plan (2022)	Tier	3	2	3
SM-82-X19	San Mateo	82	Redwood City	Intersection improvement at controlled intersection	Roosevelt Ave	Improve crossing at Roosevelt Avenue	Tier 1	3	3	3
SM-82-X20	San Mateo	82	San Mateo	Intersection improvement at controlled intersection	41st Ave	Improve crossing at 41st St	Tier 2	2	2	1
SM-82-X21	San Mateo	82	San Mateo	Intersection improvement at controlled intersection	5th Ave	Improve crossing at 5th Ave	Tier 3	2	0	1
SM-82-X22	San Mateo	82	San Mateo	Intersection improvement at controlled intersection	25th Ave	Improve crossing at 25th Avenue and SR 82 intersection	Tier	2	0	1
SM-82-X23	San Mateo	82	Redwood City	Intersection improvement at controlled intersection	Brewster Ave	Improve crossing at Brewster Avenue.	Tier 1	3	2	3
SM-82-X24	San Mateo	82	Redwood City	Intersection Improvement at controlled intersection	Edgewood Rd	Improve crossing at Edgewood Road.	Tier 2	2	0	2
SM-82-X25	San Mateo	82	San Mateo	Intersection improvement at controlled intersection	El Cerrito Ave	Potential San Mateo County project to improve crossing at El Cerrito Avenue and SR 82.	Tier	2	0	1
SM-82-X26	San Mateo	82	San Carlos	Intersection improvement at controlled intersection	San Carlos Ave	Improve crossing from San Carlos Avenue to Caltrain Station.	Tier	3	0	1
SM-82-X27	San Mateo	82	San Carlos	Interchange improvements - Class IIB	Holly St	Improve crossing with Holly Street.	Tier 2	3	0	1
SM-82-X28	San Mateo	82	San Carlos	Intersection improvement at controlled intersection	Brittain Ave	San Mateo County Bicycle and Pedestrian Master Plan proposes improvements to crossing.	Tier	3	2	1
SM-82-X29	San Mateo	82	Atherton	Intersection improvement at controlled intersection	5th Ave	San Mateo County Bicycle and Pedestrian Master Plan proposes Class II bike lanes on 5th Avenue. Consider improvements at intersection with El Camino Real	Tier	2	0	3
SM-82-X30	San Mateo	82	San Mateo	Intersection improvement at controlled intersection	28th Ave	Improve bicycle access to Hillsdale Multimodal Transit Center. New signalized intersection at entrance to transit center.	Tier	3	2	1
SM-82-X31	San Mateo	82	Belmont	Intersection improvement at uncontrolled intersection	Middle Rd	Improvements along this segment are part of the Belmont Village Specific Plan.	Tier	3	0	1
SM-82-X34	San Mateo	82	Atherton	Intersection improvement at uncontrolled intersection	Selby Ln	Installation of new hybrid beacon with crosswalk and center median upgrades. Consider coordinated bicycle detection at Selby Lane.	Tier	3	3	3

Num	County	Route	City	Improvement Type	Location	Description	Tier	Mobility Score	Safety Score	Equity Score
SM-82-X35	San Mateo	82	Palo Alto	Intersection improvement at controlled intersection	Sand Hill Rd	Improvements proposed to Class II bike lane and connection to Class IV path per Palo Alto Bicycle and Pedestrian Master Plan.	Tier	3	2	0
SM-82-X37	San Mateo	82	Millbrae, Burlingame	Intersection improvement at controlled intersection	Murchison Dr	Possible connection to potential Class III facility on Murchison Drive by County. Install bike boxes as identified in the Millbrae Active Transportation Plan (2021)	Tier	3	0	1
SM-82-X38	San Mateo	82	Daly City	Intersection improvement at controlled intersection	Hillcrest Dr	Possible connection to potential Class IV project for Hillcrest Drive and Vendome Avenue by County.	Tier	3	0	1
SM-84-C02	San Mateo	84	Unincorporated	Corridor Improvement-Shoulder improvements	I-280 - Hwy 35	Corridor improvement to provide accommodation for bicycles on popular recreational route particularly focusing on curves. Install a Class IV facility where feasible as identified in the San Mateo County Countywide Bicycle Plan	Tier	2	3	1
SM-84-C03	San Mateo	84	Redwood City	Corridor Improvement-Class IV	US 101 - Hudson St/Central Ave	Install Class IV facility from US 101 to Hudson St/Central Ave in Redwood City. Include ramp improvements at Hwy 82.	Tier	3	3	3
SM-84-C04	San Mateo	84	Redwood City	Corridor Improvement-Class IV	Central Ave - Alameda de las Pulgas	Install Class IV bikeway on Woodside Rd, as proposed in Redwood City's Walk Bike Thrive Plan.	Tier	3	3	3
SM-84-X01	San Mateo	84	Redwood City	Intersection Improvement at controlled intersection	Middlefield Rd	Improve arterial crossing. Explore installing a protected intersection.	Tier	3	3	3
SM-84-X02	San Mateo	84	Redwood City	Intersection improvement at controlled intersection	Hudson St/Central Ave	Add a connection between proposed bike lanes on Hudson Street and Central Avenue.	Tier	3	2	3
SM-84-X03	San Mateo	84	Redwood City	Intersection improvement at controlled intersection	Massachusetts Ave/San Carlos Ave	Improve crossing at intersection with existing bike facilities on Massachusetts Avenue and San Carlos Avenue.	Tier	2	2	0
SM-84-X04	San Mateo	84	Woodside	Intersection improvement at uncontrolled intersection	Kings Mountain Rd	Potential San Mateo County Project to install Class II bike lane on Kings Mountain Road from city boundary to SR 84.	Tier	0	0	0
SM-84-X05	San Mateo	84	Woodside	Intersection improvement at uncontrolled intersection	Canada Rd	Potential project by San Mateo County to improve crossing at Canada Road and SR 84. Town of Woodside interested in narrowing travel lane to widen shoulder in front of Roberts Market to accommodate parking.	Tier	1	0	0
SM-84-X06	San Mateo	84	Woodside	Intersection improvement at uncontrolled intersection	La Honda Rd/Hwy 35	Potential project by San Mateo County to improve crossing at La Honda Road and SR 35 intersection.	Tier	0	3	0
SM-84-X08	San Mateo	84	Woodside	Intersection improvement at controlled intersection	I-280 ramp - I-280 ramp	Provide continuous Class IV separated bicycle facility with green paint on SR 84 through I-280 interchange and consider posting warning signs and lower speed limits.	Tier	1	2	0
SM-84-X10	San Mateo	84	La Honda	Intersection improvement at uncontrolled intersection	Entrada Rd/Sears Ranch Rd	Improve bicycle access across Hwy 84 along Entrada Rd/Sears Ranch Rd, including potentially a flashing beacon.	Tier	0	0	0
SM-92-C01	San Mateo	92	Half Moon Bay	Corridor Improvement-Class II	Main St - HMB town limit	Potential San Mateo County project to install Class II bike lanes on San Mateo Road/SR 92 between Main Street and city boundary.	Tier	2	2	1
SM-92-C02	San Mateo	92	Half Moon Bay	Corridor Improvement-Class I	Hwy 1 - Half Moon Bay border	Potential San Mateo County project to install Class I facility on SR 92.	Tier	2	2	1
SM-92-C03	San Mateo	92	Half Moon Bay	Corridor Improvement-Class I	Hwy 1 - Main St	Consider Class II bike lane or shoulder improvements on SR 92 between highway 1 and Main Street in Half Moon Bay to connect to existing bike routes.	Tier	1	0	1
SM-92-NC01	San Mateo	92	Unincorporated	Corridor Improvement-Class I	Hwy 35 - Trail Head	Install Class I trail to connect with Trail Head gap closure	Tier	2	2	0

Num	County	Route	City	Improvement Type	Location	Description	Tier	Mobility Score	Safety Score	Equity Score
SM-92-NC02	San Mateo	92	Unincorporated	Corridor Improvement-Shoulder improvements	Half Moon Bay town limits - Skyline Dr	Install 7 ft shoulder where feasible	Tier 3	1	1	0
SM-92-X01	San Mateo	92	San Mateo	Interchange improvements - Class IIB	Ralston Ave	Potential San Mateo County project to improve crossing at Polhemus, Ralston Avenue, SR 92 interchange. Consider Class II bike lanes near the ramps for SR 92 at Ralston Avenue.	Tier	1	0	0
SM-92-X02	San Mateo	92	San Mateo	New separated crossing	Borel Pl/Spuraway Dr	Potential San Mateo County project to construct overcrossing from Borel Place to Spuraway Drive	Tier	2	0	1
SM-92-X03	San Mateo	92	San Mateo	Interchange improvements - Class IIB	De Anza Blvd	Potential San Mateo County project to install Class III facilities on De Anza Boulevard from SR 92 to Polhemus Road	Tier	0	0	0
SM-92-X04	San Mateo	92	San Mateo	Interchange improvements - Class IV	Alameda de Las Pulgas	Potential San Mateo County project to improve crossing at Alameda de las Pulgas and SR 92 interchanges	Tier	2	0	1
SM-101-NX01	San Mateo	101	Brisbane	Undercrossing improvements - Class IV	Sierra Point Pkwy/ 101	Upgrade existing Class II to Class IV bikeway	Tier	1	0	1
SM-101-NX02	San Mateo	101	San Mateo	Interchange improvements - Class IV	E Hillsdale Blvd	Install Class IV through interchange on Hillsdale	Tier	2	3	1
SM-101-NX03	San Mateo	101	South San Francisco	Interchange improvements - Class IV	Mitchell Ave	Install bicycle interchange improvements, such as square up ramps, install Class IV bikeways, add signage and striping to mark bicycle conflict points and remove free right turns.	Tier	3	0	3
SM-101-NX04	San Mateo	101	Redwood City	Overcrossing improvements - Class IV	Mapple St	Install Class IV bikeways on Maple St. Explore bridge widening or build an adjacent pedestrian/bicycle overcrossing.	Tier	3	0	3
SM-101-NX05	San Mateo	101	San Carlos	Interchange improvements - Class I or IV	Holly St	Install bicycle interchange improvements, such as square up ramps, install Class IV or I bikeways, add signage and striping to mark bicycle conflict points and remove free right turns.	Tier	3	3	1
SM-101-NX06	San Mateo	101	South San Francisco	New separated crossing	Shaw Rd	Construct Class I to connect with proposed trail connecting Shaw Rd along creek	Tier	2	0	3
SM-101-NX07	San Mateo	101	East Palo Alto	New separated crossing	San Francisquito Creek/ Woodland Ave	Construct Class I Path overcrossing to connect with the Bay Trail. Project identified in East Palo Alto Bike Plan and in San Mateo County Bike Plan bike backbone network	Tier	2	0	3
SM-101-X01	San Mateo	101	San Bruno	New separated crossing	San Bruno Ave E	Potential San Mateo County project to install Class I adjacent to San Bruno Avenue over US 101	Tier	2	0	2
SM-101-X02	San Mateo	101	Millbrae, Burlingame	New separated crossing	E Millbrae Ave	Construct a new separated Class IV overcrossing across Highway 101 parallel to the Millbrae Avenue vehicle bridge. The overcrossing eliminates a critical barrier to the Millbrae Caltrain/BART station linking over 25 continuous Bay Trail miles through 6	Tier	3	3	1
SM-101-X03	San Mateo	101	Burlingame	New separated crossing	Rollins Rd	Potential San Mateo County Project to install Class IV on Oak Grove/Wilchester between Ansel and Airport Boulevard	Tier	2	0	0
SM-101-X04	San Mateo	101	San Mateo	Interchange improvements - Class IV	Peninsula Ave	Potential San Mateo County project to install Class IV facility on Peninsula Avenue from Bayshore Boulevard to Dwight/Delaware.	Tier	3	0	3
SM-101-X05	San Mateo	101	South San Francisco	Interchange improvements - Class IV	E Grand Ave	Install bicycle interchange improvements, such as square up ramps, install Class IV bikeways, add signage and striping to mark bicycle conflict points and remove free right turns.	Tier	2	0	3
SM-101-X06	San Mateo	101	South San Francisco	Interchange improvements - Class IV	Oyster Point Blvd	Install bicycle interchange improvements, such as square up ramps, install Class IV bikeways, add signage and striping to mark bicycle conflict points and remove free right turns.	Tier	2	0	3

Num	County	Route	City	Improvement Type	Location	Description	Tier	Mobility Score	Safety Score	Equity Score
SM-101-X07	San Mateo	101	Menlo Park	Interchange improvements - Class IIB	Marsh Rd	Proposed Class II bike lanes on Marsh Road per San Mateo County Bicycle and Pedestrian Master Plan. Implement bicycle priority merge treatments on Marsh Road.	Tier	2	3	3
SM-101-X08	San Mateo	101	Redwood City	Interchange improvements - Class IIB	Whipple Ave	Signage and striping improvement on Whipple Road overcrossing.	Tier	2	0	3
SM-101-X09	San Mateo	101	Redwood City	New separated crossing	Chestnut/Seaport	Proposed undercrossing from Chestnut to Seaport. Included in US 101/Woodside Rd interchange project (in design).	Tier	2	3	3
SM-101-X10	San Mateo	101	San Mateo	New separated crossing	E Hillsdale CT	Potential San Mateo County project to install overcrossing from Norfolk Street to Franklin Parkway	Tier	2	1	1
SM-101-X11	San Mateo	101	San Mateo	New separated crossing	Lodi Ave/Haddon Dr	Potential San Mateo County project to install new overcrossing from Lodi Avenue and Norton Street to Haddon Drive	Tier	1	0	1
SM-101-X12	San Mateo	101	San Mateo	Interchange improvements - Class IV	3rd Ave/4th Ave	Potential San Mateo County project to improve crossing at 3rd and 4th Avenues and 101 interchange.	Tier	2	0	3
SM-101-X13	San Mateo	101	Belmont	Interchange improvements - Class II	Ralston Ave	Improve bicycle accommodations at interchange and consider squaring up ramps as this is near Belmont bicycle and pedestrian overcrossing.	Tier	2	0	1
SM-101-X14	San Mateo	101	Redwood City, Menlo Park	New separated crossing	Marsh Rd	New separated crossing north of Marsh Road. New Class II bike lanes planned for Marsh Road by Menlo Park as well as newly installed bike facilities on Haven Avenue.	Tier	2	3	3
SM-101-X15	San Mateo	101	Burlingame	New separated crossing	Winchester Dr	San Mateo County considering project to construct new Class IV facilities on Oak Grove Avenue and Winchester Drive.	Tier	2	0	0
SM-101-X16	San Mateo	101	East Palo Alto	New separated crossing	University Ave	Construct new Class I bicycle and pedestrian bridge over the 101 north of University Avenue. Project identified in East Palo Alto Bike Plan.	Tier	2	3	3
SM-109-C01	San Mateo	109	Menlo Park, East Palo Alto	Corridor Improvement- Class IIB	Hwy 84 - University Ave	Consider narrowing lanes to reduce vehicle speeds and improve comfort on existing bike lanes in the SB direction to improve network connectivity.	Tier	2	1	3
SM-109-NC01	San Mateo	109	Menlo Park, East Palo Alto	Corridor Improvement- Class IV	University Ave - Donohoe St	Explore options of upgrading existing Class II to a Class IV	Tier	3	3	3
SM-109-X01	San Mateo	109	Menlo Park	Intersection improvement at uncontrolled intersection	University Ave	Consider HAWK or bike signal to connect southbound cyclists with existing two way Class I on the east side of University Ave	Tier	2	0	3
SM-114-C01	San Mateo	114	Menlo Park, East Palo Alto	Corridor Improvement- Class IV	Hwy 84 - US 101	Connect new protected bike lanes on Willow Road to Bay Trail and Facebook campus.	Tier	3	2	3
SM-114-C02	San Mateo	114	Menlo Park, East Palo Alto	Corridor Improvement- Class IV	Ivy Dr - Newbridge St	Improvements to pedestrian crossings (interval timing), maintenance of crosswalk markings, and crosswalk alignment.	Tier	2	0	3
SM-114-X01	San Mateo	114	Menlo Park	Intersection improvement at uncontrolled intersection	Dumbarton rail line	Consider future connection to pedestrian and bicycle trail on the Dumbarton Bridge	Tier	2	0	3
SM-280-C01	San Mateo	280	Daly City	Corridor Improvement- Class II	John Daly Blvd - San Pedro Rd	Potential San Mateo County project to install Class II on Junipero Serra Boulevard	Tier	3	0	3
SM-280-NX01	San Mateo	280	Daly City	Interchange improvements - Class IV	John Daly Blvd/ 280	Install Class I or Class IV bikeway on interchange as identified in Walk Bike Daly City and to connect to existing path on west side to the BART station. See Walk Bike Daly City pg 58 for interchange conceptual plan.	Tier	3	0	3
SM-280-X01	San Mateo	280	Daly City	Interchange improvements - Class IIB	Washington St	Potential San Mateo County project to install Class III facility on Washington Street between Junipero Serra Boulevard and Heather Road.	Tier	3	0	2
SM-280-X02	San Mateo	280	Daly City	Interchange improvements - Class IV	Serramonte Blvd	Potential San Mateo County project to install Class IV on Serramonte Boulevard between Hillside Boulevard and Gellert Boulevard.	Tier	2	0	0

Num	County	Route	City	Improvement Type	Location	Description	Tier	Mobility Score	Safety Score	Equity Score
SM-280-X03	San Mateo	280	Daly City	Interchange improvements - Class II	Hickey Blvd	Potential San Mateo County project to install Class III on Hickey Boulevard between Longford and Skyline Boulevard. Consider including dashed markings through intersection.	Tier	2	0	1
SM-280-X04	San Mateo	280	Millbrae	Interchange improvements - Class II	Larkspur Dr	Potential San Mateo County project to install Class II on Larkspur Drive under I 280	Tier	1	0	1
SM-280-X05	San Mateo	280	South San Francisco	Interchange improvements - Class IIB	Westborough Blvd	Potential San Mateo County project to install Class III bike route on Westborough Boulevard between Callan Boulevard and I 280.	Tier	2	0	2
SM-280-X06	San Mateo	280	Woodside	Interchange improvements - Class I	Farm Hill Blvd	Potential San Mateo County Project to install new Class I facility from Farm Hill Boulevard to Canada Road	Tier	0	0	0
SM-280-X07	San Mateo	280	San Bruno	Interchange improvements - Class IIB	San Bruno Ave W	City is proposing the conversion of vehicle lanes into a Class II buffered bike lane where San Bruno Avenue crosses under I-280.	Tier	2	0	1
SM-280-X08	San Mateo	280	San Bruno	Interchange improvements - Class II	Sneath Ln	Improve bicycle accommodations at intersection with Sneath Lane which is being improved by the City of San Bruno. Proposed improves may include widening or conversion to a roundabout to accommodate Class II bike lane.	Tier	3	2	1
SM-280-X09	San Mateo	280	Menlo Park	Interchange improvements - Class IV	Sand Hill Rd	Improvements to existing intersection with Sand Hill Road which is a popular bicycle route. Square up ramps. Upgrade existing Class II to a Class IV. Consider reducing number of lanes to one lane in each direction. Remove long floating bike lane.	Tier	1	2	0
SM-280-X10	San Mateo	280	Unincorporated	Interchange improvements - Class IIB	Edgewood Rd	Provide bike lanes, conflict markings, minor ramp improvements and signage along Edgewood Rd at I-280 interchange	Tier	1	0	0
SM-380-X01	San Mateo	380	San Bruno	New separated crossing	Cherry Ave	Potential San Mateo County project to install Class II bike lane on Cherry Avenue between Sneath Lane and San Bruno Avenue. Consider improvements to lighting.	Tier	2	0	1
SM-380-X02	San Mateo	380	South San Francisco	Interchange improvements - Class IIB	S Airport Blvd	Potential San Mateo County project to install Class I adjacent to Airport Boulevard under intersection with I 380	Tier	2	0	3
SM-92,35-NX01	San Mateo	92/35	Unincorporated	Intersection improvement at uncontrolled intersection	Half Moon Bay Dr/ Skyline Blvd	Install a bicycle signal to facilitate the turning movements of a proposed two way class I facility to be installed along Skyline Dr and Half Moon Bay Rd	Tier	1	1	1
SM-101,92-NX01	San Mateo	101/ 92	San Mateo	Interchange improvements - Class IV	Fashion Island Blvd	Install Class IV through interchange on Fashion Island Blvd	Tier	2	0	1
SM-84,82-X01	San Mateo	84,82	Redwood City	Interchange improvements - Class II	SR 82/SR 84 intersection	San Mateo County Bicycle and Pedestrian Master Plan proposed crossing improvement. Consider removing slip lanes and traffic islands to increase safety.	Tier	3	3	3
SMAI-84-C01	San Mateo, Alameda	84	Menlo Park, Fremont	Corridor Improvement - Class I	San Francisco Bay Trail - Marshlands Rd	Widen existing Class I path on Dumbarton Bridge along Bay Trail to meet standards.	Tier	2	0	3
SMAI-92-C01	San Mateo, Alameda	92	San Mateo, Hayward	Corridor Improvement - Class I	Foster City - Hayward	Potential San Mateo County project to install Class I facility on SR 92 between Foster City and Hayward	Tier	3	0	2
SMSC-35-C01	San Mateo, Santa Clara	35	Unincorporated	Corridor Improvement - Shoulder improvements	Hwy 35 (Sky Linda) - Hwy 39	Corridor improvement to increase safety for people biking on this popular route.	Tier	2	2	0
SC-9-C01	Santa Clara	9	Unincorporated, Saratoga	Corridor Improvement - Shoulder improvements	Los Gatos - Saratoga Rd - Hwy 35	Explore shoulder improvements along this segment of SR-9. When possible provide separate bike facilities	Tier	1	3	0
SC-9-NC01	Santa Clara	9	Los Gatos	Corridor Improvement - Class I or IV	University Ave - Alberto Way	Provide a Class IV bikeway to connect to Los Gatos Creek Trail per Los Gatos Bike and Ped Master Plan	Tier	3	1	1
SC-9-NC02	Santa Clara	9	Los Gatos, Saratoga	Corridor Improvement - Class IIB	Saratoga Ave - University Ave	Enhance existing Class II Bike Lanes on Los Gatos Saratoga Road (Highway 9) from Western City Limits of Monte Sereno to University Avenue	Tier	3	3	0

Num	County	Route	City	Improvement Type	Location	Description	Tier	Mobility Score	Safety Score	Equity Score
SC-17-NX01	Santa Clara	17	Los Gatos	New separated crossing	Blossom Hill Rd/ 17	Bicycle and Pedestrian Overcrossing over Highway 17 South of Blossom Hill Road. Project underway.	Tier	2	0	0
SC-17-X01	Santa Clara	17	Campbell	Interchange improvements - Class IV	San Tomas Expywy	SR 17/San Tomas Expressway Improvements. Install Class IV bikeways, remove slip lanes, reduce corner curb radius, add green conflict markings and remove floating bike lanes/ replace with partially separated bike lane or separated bikeway.	Tier	2	2	1
SC-17-X02	Santa Clara	17	San Jose, Campbell	Interchange improvements - Class IV	Hamilton Ave	SR 17 SB/Hamilton Avenue - Replace free-merging on/off ramps, square up ramps, install Class IV though interchange, add green conflict markings.	Tier	3	3	1
SC-82-C01	Santa Clara	82	Mountain View	Corridor Improvement- Class IV	San Antonio Rd - Bernardo Ave	Provide a Class IV bikeway on El Camino Real (Hwy 82) from San Antonio Rd to Bernardo Ave	Tier	3	3	1
SC-82-C02	Santa Clara	82	Sunnyvale	Corridor Improvement- Class IV	Bernardo Ave - Lawrence Expywy	Install continuous Class IV bikeway on El Camino Real with high-quality separation and bus boarding island to continue bikeway separation.	Tier	3	3	1
SC-82-C03	Santa Clara	82	Santa Clara	Corridor Improvement- Class IV	Lawrence Expywy I-880	Provide a Class IV separated bikeway on El Camino Real (Hwy 82) from Lawrence Expressway to I-880 in the City of Santa Clara as detailed in the VTA Central Bikeway Study (2022)	Tier	3	3	3
SC-82-NX01	Santa Clara	82	Santa Clara	Intersection improvement - Priority Arterial Crossing	San Tomas Expy	Priority intersection improvement. Install bikeway improvements such as a protected intersection, remove slip lanes. See VTA Central Bikeway Study.	Tier	3	3	2
SC-82-NX02	Santa Clara	82	Santa Clara	Intersection improvement at controlled intersection	Los Padres Blvd	Install bikeway improvements such as a protected intersection. See VTA Central Bikeway Study.	Tier	3	0	2
SC-82-NX03	Santa Clara	82	Santa Clara	Intersection improvement at controlled intersection	Monroe St / SR- 82	Install bikeway improvements such as a protected intersection. High priority improvement in City of Santa Clara Bike Plan Update (2018). See VTA Central Bikeway Study.	Tier	3	0	1
SC-82-NX04	Santa Clara	82	Santa Clara	Intersection improvement at controlled intersection	Benton St / SR- 82	Bicycle intersection improvements such as Signal detection, tighten turning radii, High priority location identified in City of Santa Clara bike plan (2018). Consider installing a protected intersection.	Tier	3	2	1
SC-82-NX05	Santa Clara	82	Mountain View	Intersection improvements at controlled intersection	Castro St/El Camino Real	Install crossing and turning improvements for bicycles. Identified as a spot 2 intersection improvement in Mountain View Bicycle Plan (2016)	Tier	3	2	0
SC-82-NX06	Santa Clara	82	Mountain View	Intersection improvements at controlled intersection	El Camino Real/ El Monte Avenue	Install crossing and turning improvements for bicycles. Identified as a spot 2 intersection improvement in Mountain View Bicycle Plan (2016)	Tier	3	0	1
SC-82-NX07	Santa Clara	82	Palo Alto	Intersection improvements at controlled intersection	Margarita Ave/ 82	The slightly off-set nature of this intersection creates excessively long and/or out-of-direction crossings. Creative measures to improve the geometry and visibility of this crossing are needed in order to develop priority Matadero-Margarita Bicycle Blvd	Tier	2	2	0
SC-82-NX08	Santa Clara	82	Mountain View	Intersection improvements at controlled intersection	N San Antonio Rd	Explore installing a protected intersection to enhance network connectivity and bicycle safety.	Tier	3	0	1
SC-82-NX09	Santa Clara	82	Palo Alto	Intersection improvements at controlled intersection	Stanford Ave	Explore installing a protected intersection to enhance network connectivity and bicycle safety.	Tier	3	3	1
SC-82-NX10	Santa Clara	82	Palo Alto	Intersection improvements at controlled intersection	California Ave	Explore potential improvements such as a protected intersection or similar robust bicycle safety improvements	Tier	3	3	0
SC-82-NX11	Santa Clara	82	Sunnyvale	Intersection improvement at uncontrolled intersection	East Channel Trail	Construct crossing improvement for the proposed Class I multi-use East Channel Trail along the East Channel.	Tier	2	0	0

Num	County	Route	City	Improvement Type	Location	Description	Tier	Mobility Score	Safety Score	Equity Score
SC-82-NX12	Santa Clara	82	Sunnyvale	Intersection improvement at controlled intersection	El Camino Real/ E Fremont Ave/ Wolfe Rd	Multimodal improvements at the Wolfe Road and Fremont Avenue intersections, including signalizing the intersection at Fremont Avenue and El Camino Real.	Tier	2	1	1
SC-82-NX13	Santa Clara	82	Mountain View	Intersection improvements at controlled intersection	Escuela Ave	Install bicycle and pedestrian crossing safety improvements such as curb extensions, roadway markings, traffic signal timing safety improvements or raised crossings.	Tier	3	2	0
SC-82-X01	Santa Clara	82	Palo Alto	New separated crossing	Palm Dr/ University Ave	Per City of Palo Alto 2012 Bicycle + Pedestrian Transportation Plan, add roadway and intersection improvements that enhance access to existing station facilities, including widening underpasses along University Avenue	Tier	3	3	3
SC-82-X02	Santa Clara	82	Palo Alto	Intersection improvement at uncontrolled intersection	Olive Ave	Installation of a HAWK beacon across El Camino Real as part of mixed-use development project	Tier	2	0	0
SC-82-X03	Santa Clara	82	Palo Alto	Intersection Improvement at controlled intersection	Charleston Rd/Arastadero Rd	Explore curb extensions, roadway markings, upgraded traffic signal equipment, bicycle protection, green bike lane, raised crosswalk http://www.cityofpaloalto.org/mwg-internal/de5fs23hu73ds/progress?id=ta12j-gq-SRJUTk6DlCaPutSbidg3eibY_7accbnZfo,&dl	Tier	3	3	0
SC-82-X04	Santa Clara	82	Palo Alto	Intersection Improvement at controlled intersection	Embarcadero Rd	Explore corridor and Intersection Improvements including protected intersection http://www.cityofpaloalto.org/news/displaynews.asp?NewsID=3404&TargetID=106	Tier	3	3	1
SC-82-X05	Santa Clara	82	Palo Alto	Intersection improvement at controlled intersection	Churchill Ave	City of Palo Alto project for Churchill Avenue Multi-Modal Improvements at Churchill and El Camino Real including protected bike and pedestrian crossing, new traffic signal equipment, and roadway markings new right turn pocket, new signal and median on E	Tier	3	0	1
SMSC-82-C01	Santa Clara	82	Palo Alto	Corridor Improvement- Class IV	Sand Hill Rd - San Antonio Rd	Install continuous Class IV bikeway on El Camino Real with high-quality separation and bus boarding island to continue bikeway separation.	Tier	3	3	3
SC-85-C01	Santa Clara	85	Sunnyvale	Corridor Improvement- Class I	Dale Ave - Fremont Ave	Construct a Class I path along Stevens Creek Trail from current end at Dale Ave to Fremont Ave, at least partially within Caltrans ROW.	Tier	3	0	1
SC-85-NX01	Santa Clara	85	San Jose	Interchange improvements - Class IV	Cottle Rd /101	Install bicycle interchange improvements, such as square up ramps, install Class IV bikeways, add signage and striping to mark bicycle conflict points and remove free right turns.	Tier	2	2	1
SC-85-NX02	Santa Clara	85	San Jose	Overcrossing improvements - Class IV	Sneel Ave	Install Class IV on Snell Ave overcrossing	Tier 3	2	0	1
SC-85-NX03	Santa Clara	85	San Jose	Interchange improvements - Class IV	Almaden Expw/ SR-85	Install bicycle interchange improvements, such as square up ramps, install Class IV bikeways, add signage and striping to mark bicycle conflict points, remove floating bike lanes and remove free right turns.	Tier	3	0	1
SC-85-NX04	Santa Clara	85	San Jose	Interchange improvements - Class IV	Camden Ave/ SR 85	Install bicycle interchange improvements, install Class IV bikeways, add signage and striping to mark bicycle conflict points.	Tier	2	0	1
SC-85-NX05	Santa Clara	85	San Jose	Interchange improvements - Class IV	Union Ave / Samaritan Dr	Install bicycle interchange improvements, install Class IV bikeways, add signage and striping to mark bicycle conflict points and remove floating bike lanes.	Tier	1	2	1

Num	County	Route	City	Improvement Type	Location	Description	Tier	Mobility Score	Safety Score	Equity Score
SC-85-NX06	Santa Clara	85	Sunnyvale	Interchange improvements - Class IV	W Fremont Ave / 85	Install bicycle interchange improvements, install Class IV bikeways, add signage and striping to mark bicycle conflict points, remove pork chop island, replace floating bike lanes with separated bikeway or partially separated bikeway.	Tier	2	2	0
SC-85-NX07	Santa Clara	85	Cupertino	Interchange improvements - Class IV	De Anza Blvd/ 85	Install bicycle interchange improvements. Install Class IV bikeways and reduce corner curb radius. Identified as a priority improvement in Cupertino's Bike Plan.	Tier	1	0	0
SC-85-NX08	Santa Clara	85	Sunnyvale	New separated crossing	Ticonderoga Dr	Construct a multi-use trail undercrossing to cross SR 85 as part of the future Stevens Creek Trail	Tier	1	0	0
SC-85-NX09	Santa Clara	85	Mountain View	Overcrossing improvements - Class IV	Middlefield Rd	Explore options to widen existing bikeways to provide a Class IV	Tier	1	1	0
SC-85-NX10	Santa Clara	85	Saratoga	Interchange improvements - Class IV	Saratoga Ave	Install bicycle interchange improvements. Upgrade existing Class II to Class IV. Install elements of protected intersections.	Tier	1	3	0
SC-85-X01	Santa Clara	85	Mountain View	Interchange improvements - Class IV	Mountain View Alviso Rd	SR 85/SR237 Area Improvements in Mountain View to address mainline congestion and regional connectivity through the SR 85/SR 237 connector, SR 85/El Camino Real interchange and the SR 237/El Camino/Grant Road interchange. Improvements are needed at SR 85	Tier	2	0	1
SC-85-X03	Santa Clara	85	San Jose	Interchange improvements - Class IV	Greak Oaks Blvd	Replace free-merging on/off ramps with stop-controlled ramps to improve bike and ped accommodation and safety. Add continuous sidewalks through interchange. Add continuous Class IV or I bikeways through interchange.	Tier	2	0	1
SC-85-X04	Santa Clara	85	San Jose	Interchange improvements - Class IV	Blossom Hill Rd	Install bicycle interchange improvements, such as square up ramps, upgrade existing Class IIB to a Class IV bikeways, and remove free right turns.	Tier	2	0	1
SC-85-X05	Santa Clara	85	Cupertino	Interchange improvements - Class IV	Stevens Creek Blvd	Install bicycle interchange improvements. Install Class IV bikeways, reduce corner curb radius and remove pork chops.	Tier	2	1	0
SC-85-X06	Santa Clara	85	Cupertino	New separated crossing	Stevens Creek Blvd	Marys Ave to Grand Ave SR 85 overcrossing. Identified as a tier 1 improvement in Cupertino's Bike Plan (2016)	Tier	2	1	0
SC-85-X07	Santa Clara	85	Sunnyvale	New separated crossing	Bryant Ave	Create new bike/ped overcrossing of Hwy 85 at Bryant Ave to connect Mountain View High School to future Stevens Creek Trail	Tier	2	0	0
SC-85-X08	Santa Clara	85	Cupertino, Sunnyvale	Interchange improvements - Class IV	Homestead Rd	Provide green striping and ideally Class IV across Hwy 85 ramps	Tier	2	3	0
SC-85-X09	Santa Clara	85	Saratoga	New separated crossing	Cox Ave	Create new separated crossing of SR-85 at Cox Ave	Tier	2	0	0
SC-87-NX01	Santa Clara	87	San Jose	Interchange improvements - Class IV	Curtner Ave/ 87	Upgrade current Class IV to include more permanent materials. Square up ramps.	Tier	3	3	3
SC-87-X01	Santa Clara	87	San Jose	Interchange improvements - Class IV	Captiol Corridor rail tracks	Existing Class I Path may be impacted by proposed CA High Speed Rail and its major structures; City seeks sustained support for operation of this Class I Path upon Caltrans Right-of-way as CA HSR considers development in the narrow right-of-way.	Tier	3	0	3
SC-87-X02	Santa Clara	87	San Jose	New separated crossing	Three Creeks Trail	Class I Bikeway Pedestrian / Bicycle Bridge, with associated major ramp structure to the west, and sustained elevated alignment to the east. Subject of SkyLane Vision Study. Concept shared with CA High Speed Rail as part of environmental document scope	Tier	2	0	3

Num	County	Route	City	Improvement Type	Location	Description	Tier	Mobility Score	Safety Score	Equity Score
SC-87-X03	Santa Clara	87	San Jose	Interchange improvements - Class IV	Taylor St	Replace free-merging on/off ramps with stop-controlled ramps to improve bike and ped accommodation and safety. Add continuous sidewalks through interchange. Add continuous Class IV or I bikeways through interchange.	Tier	2	0	1
SC-87-X04	Santa Clara	87	San Jose	Interchange improvements - Class IV	W San Carlos St	Replace free-merging on/off ramps with stop-controlled ramps to improve bike and ped accommodation and safety. Add continuous sidewalks through interchange. Add continuous Class IV or I bikeways through interchange.	Tier	3	0	2
SC-87-X05	Santa Clara	87	San Jose	Interchange improvements - Class IV	Capitol Expy	Replace free-merging on/off ramps with stop-controlled ramps to improve bike and ped accommodation and safety. Add continuous sidewalks through interchange. Add continuous Class IV or I bikeways through interchange.	Tier	2	0	1
SC-87-X06	Santa Clara	87	San Jose	Interchange improvements - Class IV	Julian St	Replace free-merging on/off ramps with stop-controlled ramps to improve bike and ped accommodation and safety. Add continuous sidewalks through interchange. Add continuous Class IV or I bikeways through interchange.	Tier	2	3	2
SC-87-X07	Santa Clara	87	San Jose	Interchange improvements - Class IV	Azuera Ave	Replace free-merging on/off ramps with stop-controlled ramps to improve bike and ped accommodation and safety. Add continuous sidewalks through interchange. Add continuous Class IV or I bikeways through interchange.	Tier	3	0	2
SC-87-X08	Santa Clara	87	San Jose	Interchange improvements - Class IV	Guadalupe Pkwy	Add continuous bikeways on streets under/over freeway.	Tier	2	0	3
SC-101-C02	Santa Clara	101	Gilroy	Corridor Improvement - Class I	Leavesley Rd - E Sixth St	Install Class I path next to Highway 101 via Santa Clara County Water District Storm Channel	Tier	3	1	3
SC-101-NX01	Santa Clara	101	San Jose	Interchange Improvement - Class IV or Class I	Zanker Rd/ N 4th St / 101	Proposed new roadway overcrossing. Skyport Dr Extension (N 1st St to Zanker Rd)	Tier	2	0	3
SC-101-NX02	Santa Clara	101	San Jose	Interchange Improvement - Class IV	N 1st St	Install bicycle interchange improvements, such as square up ramps, install Class IV bikeways, add signage and striping to mark bicycle conflict points and remove free right turns.	Tier	2	2	3
SC-101-NX03	Santa Clara	101	San Jose	Overcrossing improvement - Class IV	E San Antonio St	City improved roadways leading up to the overcrossing to include Class IV bikeway. Roadway narrows at the bridge. Explore ways of improving bikeway to a Class IV bikeway at bridge.	Tier	2	0	3
SC-101-NX04	Santa Clara	101	San Jose	Interchange improvements - Class IV	E Capitol Expwy/ 101	Install bicycle interchange improvements, such as square up ramps, install Class IV bikeways, add signage and striping to mark bicycle conflict points and remove free right turns. Remove floating bike lane or install partially protected bike lane.	Tier	2	0	3
SC-101-NX05	Santa Clara	101	San Jose	Interchange improvements - Class IV	Yerba Buena Rd	Install bicycle interchange improvements, such as installing Class IV bikeways, remove pork chop island, add signage and striping to mark bicycle conflict points.	Tier	1	0	1
SC-101-NX06	Santa Clara	101	San Jose	Interchange improvements - Class IV	Hellyer Ave /US- 101	Install bicycle interchange improvements, such as square up ramps, install Class IV bikeways, add signage and striping to mark bicycle conflict points and remove free right turns.	Tier	1	1	2
SC-101-NX07	Santa Clara	101	San Jose	Interchange improvements - Class IV	Bernal Rd	Install bicycle interchange improvements, such as square up ramps, install Class IV bikeways, add signage and striping to mark bicycle conflict points and remove free right turns.	Tier	1	3	1

Num	County	Route	City	Improvement Type	Location	Description	Tier	Mobility Score	Safety Score	Equity Score
SC-101-NX08	Santa Clara	101	Santa Clara	Interchange improvements - Class IV	Bowers Ave / US 101	Install bicycle interchange improvements, such as square up ramps, install Class IV bikeways, add signage and striping to mark bicycle conflict points and remove free right turns.	Tier	2	0	0
SC-101-NX09	Santa Clara	101	Santa Clara	Existing undercrossing improvement - lighting	San Tomas Aquino Creek Trail	Improve existing undercrossing lighting	Tier 2	2	0	3
SC-101-NX10	Santa Clara	101	Mountain View	Interchange improvements - Class IV or I	N Shoreline Blvd/ 101	Install bicycle interchange improvements, install a Class I or Class IV bikeways.	Tier	2	0	1
SC-101-NX11	Santa Clara	101	Mountain View	Interchange improvements - Class IV or I	Rengstorff Ave/ 101	Install bicycle interchange improvements, install a Class I or Class IV bikeways.	Tier	3	2	1
SC-101-NX12	Santa Clara	101	Mountain View	Interchange improvements - Class I	Ellis St/ 101	Install a Class I through interchange, add green conflict markings and intersection improvements.	Tier	2	0	1
SC-101-NX13	Santa Clara	101	Mountain View	Interchange improvements - Class IV	Moffett Blvd/ 101	Upgrade Class II to a Class IV. Install green conflict markings and intersection improvements at ramps.	Tier	2	0	1
SC-101-NX14	Santa Clara	101	Sunnyvale	Interchange Improvements - Class IV	Lawrence Expwy/ US-101	Install bicycle interchange improvements, such as square up ramps, install Class IV bikeways, add signage and striping to mark bicycle conflict points and remove free right turns.	Tier	3	0	1
SC-101-NX15	Santa Clara	101	Morgan Hill	Interchange improvements - Class IV	E Dunne Ave/101	Install bicycle interchange improvements, such as square up ramps, install Class IV bikeways, add signage and striping to mark bicycle conflict points and remove free right turns.	Tier	1	0	2
SC-101-NX16	Santa Clara	101	Morgan Hill	Interchange improvements - Class IV	Tennant Ave/101	Upgrade Class II to Class IV bikeways and add signage and striping to mark bicycle conflict points	Tier	1	0	2
SC-101-NX17	Santa Clara	101	Palo Alto	Interchange improvements - Class IV or I	San Antonio Rd/ 101	Install bicycle interchange improvements, install a Class I or Class IV bikeways.	Tier	1	3	1
SC-101-NX18	Santa Clara	101	Santa Clara	New separated crossing	Calabazas Creek Trail	Construct crossing to connect to Class I Multi Use trail proposed along Calabazas Creek	Tier	2	0	3
SC-101-NX19	Santa Clara	101	San Jose	New separated crossing	Plumas Dr/ Barberry Ct/101	Windmill Springs Park Overcrossing (Umbarger Rd Path/Plumas Dr to Barberry Ln)	Tier	2	0	3
SC-101-NX20	Santa Clara	101	San Jose	New separated crossing	Havana Dr/ 101	Hwy 101 Overcrossing (Bacchus Dr / Fair Swim Center to Midfield Ave / Havana Dr)	Tier	2	0	3
SC-101-NX21	Santa Clara	101	San Jose	New separated crossing	N Marbug Way	Proposed Lower Silver Creek Trail	Tier 1	2	2	3
SC-101-NX22	Santa Clara	101	Sunnyvale	New separated crossing	East Channel Trail	Construct undercrossing improvement for the proposed Class I multi-use East Channel Trail along the East Channel.	Tier	2	0	2
SC-101-NX23	Santa Clara	101	San Jose	New separated crossing	Las Plumas Rd	Class I Bikeway Pedestrian/Bicycle Bridge to replace railway bridge structure Project alignment is a future acquisition target. Acquisition underway for parcels from William Street to Whitton Avenue. To connect to Five Wounds Trail.	Tier	2	0	3
SC-101-NX24	Santa Clara	101	San Jose	New separated crossing	Coyote Creek Trail (Mabury Rd to 21st St)	Multi Use path overcrossing connect with proposed Coyote Creek Trail (Mabury Rd to 21st St)	Tier	2	0	3
SC-101-NX25	Santa Clara	101	San Jose	New separated crossing	Branham Ln	Branham Ln Overcrossing (Discovery Avenue to Coyote Road) to connect with Coyote Creek Trail	Tier	2	0	2
SC-101-X02	Santa Clara	101	San Jose	Interchange improvements - Class IV	Old Oakland Rd	Add continuous bikeways through interchange on Old Oakland Road. Square up ramps.	Tier	2	2	3
SC-101-X04	Santa Clara	101	San Jose	Interchange improvements - Class IV	Taylor St	In short term, add continuous sidewalks on both sides of streets under/over freeway; add continuous bikeways on streets under/over freeway. In the long term, add new interchange at US 101/Mabury Road in San Jose to address regional access. Interchan	Tier	3	0	3

Num	County	Route	City	Improvement Type	Location	Description	Tier	Mobility Score	Safety Score	Equity Score
SC-101-X05	Santa Clara	101	Morgan Hill	Interchange improvements - Class IV	Cochrane Rd/ 101	Upgrade Class II to Class IV throughout interchange. Remove floating bike lane or improve to a partially protected floating bike lane.	Tier	2	0	0
SC-101-X07	Santa Clara	101	San Jose	Interchange improvements - Class IV	Tully Rd	Replace free-merging on/off ramps with signalized ramps to improve bike and ped accommodation and safety. Remove floating bike lanes. Add continuous Class IV through interchange, bicycle signal phase and truck turning apron where feasible.	Tier	2	3	3
SC-101-X08	Santa Clara	101	San Jose	Interchange improvements - Class IV	Story Rd	Upgrade existing Class IIB bikeways to Class IV bikeways through interchange. Add RFBs. Story Rd is a Cross County Bicycle Corridor.	Tier	2	3	3
SC-101-X09	Santa Clara	101	San Jose	Interchange improvements - Class IV	Alum Rock Ave	Install bicycle interchange improvements, such as square up ramps, install Class IV bikeways, add signage and striping to mark bicycle conflict points and remove free right turns.	Tier	2	3	3
SC-101-X10	Santa Clara	101	San Jose	Interchange improvements - Class IV	McKee Rd	Replace free-merging on/off ramps with stop-controlled ramps to improve bike and ped accommodation and safety. Add continuous sidewalks through interchange. Add continuous Class IV or I bikeways through interchange. McKee is a Cross County Bicycle Corridor.	Tier	2	2	3
SC-101-X11	Santa Clara	101	San Jose	Interchange improvements - Class IV	Airport Pkwy	Replace free-merging on/off ramps with stop-controlled ramps to improve bike and ped accommodation and safety. Add continuous sidewalks through interchange. Add continuous Class IV or I bikeways through interchange. Brokaw is Cross County Bicycle Corridor.	Tier	2	0	3
SC-101-X12	Santa Clara	101	San Jose	Interchange improvements - Class IIB	Hedding	Add continuous bikeways on streets under/over freeway. Hedding is Cross County Bicycle Corridor.	Tier	2	0	3
SC-101-X13	Santa Clara	101	Gilroy	New separated crossing	Gilman Rd	Construct new bike and pedestrian overcrossing at Gilman Rd	Tier	2	0	3
SC-130-C01	Santa Clara	130	San Jose	Corridor Improvement- Class I	White St - Mt Hamilton Rd	Install Class I or Class IV, shared frontage road marked for bikes, and some Class II buffered segments along Alum Rock Ave from White Rd to N Hamilton Ave	Tier	3	2	3
SC-152-NC01	Santa Clara	152	Gilroy	Corridor Improvement- Class I or IV	US 101 - Llagas Trail	Provide Class I or IV on E 10th St	Tier 1	3	0	3
SC-152-NC02	Santa Clara	152	Gilroy	Corridor Improvement- Class I	Cinnamon Way - Santa Teresa Blvd	Provide Class I bikeway to connect existing Class I to Santa Teresa Blvd on south side	Tier	1	0	1
SC-237-NC01	Santa Clara	237	Milpitas	Corridor Improvement- Class I	McCarthy Blvd - S Park Victoria Dr	Provide Class IV along Calaveras Blvd. This is a critical link as it is one of the few east-west connections across the UPP/BART tracks.	Tier	3	2	2
SC-237-NX01	Santa Clara	237	Milpitas	Intersection improvements at controlled intersection	N Able St	Square up ramps, install Class IV bikeways, add signage and striping to mark bicycle conflict points and remove free right turns and pork chop islands.	Tier	2	0	1
SC-237-NX02	Santa Clara	237	Sunnyvale	Interchange improvements - Class IV or I	SR 237/Lawrence Expressway	Widen existing bridges to accommodate complete streets features, and modify existing on-ramps and off-ramps at Lawrence Expressway.	Tier	2	0	2
SC-237-NX03	Santa Clara	237	Sunnyvale	Interchange improvements - Class IV or I	SR 237/Java Drive	Widen existing bridges to accommodate complete streets features, and modify existing on-ramps and off-ramps at Java Drive.	Tier	3	0	2
SC-237-NX04	Santa Clara	237	Sunnyvale	New separated crossing	Mary Ave Overcrossing	Construct new overcrossing from Mary and Almaden avenues, over US 101 / SR 237 / Moffett Park LRT Station to 11th Avenue and Discovery Way.	Tier	3	0	2
SC-237-NX05	Santa Clara	237	Sunnyvale	New separated crossing	East Channel Trail	Construct crossing to connect to Class I Multi Use trail proposed along East Channel Trail	Tier	3	0	1

Num	County	Route	City	Improvement Type	Location	Description	Tier	Mobility Score	Safety Score	Equity Score
SC-237-X01	Santa Clara	237	Mountain View	Intersection Improvement at controlled intersection	Mountain View Alviso Rd	Install a protected intersection.	Tier 1	3	3	0
SC-237-X03	Santa Clara	237	Santa Clara	Interchange improvements - Class IV	SR 237/Great America Pkwy	SR 237 Corridor Improvements in the cities of San Jose, Santa Clara, and Milpitas to address mainline congestion and regional connectivity by addition of SR 232 westbound/eastbound auxiliary lanes between Zanker Road and North First Street, improvements a	Tier	2	0	2
SC-280-C01	Santa Clara	280	Sunnyvale, Cupertino	Corridor Improvement - Class I	Mary Ave - Calabazas Creek	City of Cupertino proposed I-280 Channel Trail (Junipero Serra Trail) from Mary Ave Bridge to Calabazas Creek	Tier	3	1	0
SC-280-NX01	Santa Clara	280	San Jose	Undercrossing Improvement - Class IV	S 2nd St	Upgrade bikeway to Class IV on undercrossing ₂	Tier	2	0	3
SC-280-NX02	Santa Clara	280	San Jose	Undercrossing Improvement - Class IV	S 3rd St	Upgrade bikeway to Class IV on undercrossing ₂	Tier	2	0	3
SC-280-NX03	Santa Clara	280	San Jose	Interchange improvements - Class II	E Virginia St	Install Class II through interchange ₂ , reduce corner curb radius,	Tier	2	0	3
SC-280-NX04	Santa Clara	280	San Jose	Interchange improvements - Class II	E Reed St	Install Class II through interchange ₂ , add south leg crosswalk	Tier	2	0	3
SC-280-NX05	Santa Clara	280	San Jose	Undercrossing improvement - Class IV	S Almaden Ave	Undercrossing Improvement. Upgrade to Class IV. ₁	Tier	3	2	3
SC-280-NX06	Santa Clara	280	Santa Clara	Undercrossing improvement - Class IV	Lincoln Ave	Upgrade bikeway through undercrossing to Class IV ₂	Tier	3	0	1
SC-280-NX07	Santa Clara	280	San Jose	Interchange Improvements - Class IV	Meridian Ave	Upgrade to a Class IV, square up ramps.	Tier 2	2	0	3
SC-280-NX08	Santa Clara	280	San Jose	Overcrossing Improvement - Class II	Leigh Ave	Install Class II bike lane at overcrossing	Tier 1	3	0	3
SC-280-NX09	Santa Clara	280	San Jose	Overcrossing Improvement - Class IV	S Bascom Ave	Overcrossing Improvement. Install Class IV bikeway. ₁	Tier	3	0	3
SC-280-NX10	Santa Clara	280	San Jose	Interchange improvement - Class IV	Lawrence Expy	Install Class IV throughout interchange,	Tier 2	3	0	1
SC-280-NX11	Santa Clara	280	Cupertino	Interchange improvements - Class IV	De Anza Blvd/ 280	Install bicycle interchange improvements. Install Class IV bikeways, add signage and striping to mark bicycle conflict points and reduce corner curb radius. Identified as a priority improvement in Cupertino's Bike Plan.	Tier	2	1	0
SC-280-NX12	Santa Clara	280	Cupertino	Interchange improvements - Class IV	Foothill Blvd/ 280	Install bicycle interchange improvements. Install Class IV bikeways, square up ramps, add signage and striping to mark bicycle conflict points and reduce corner curb radius.	Tier	2	3	0
SC-280-NX13	Santa Clara	280	San Jose	Overcrossing Improvement - Class IV	Race St	Overcrossing Improvement. Install Class IV bikeway. ₃	Tier	2	0	1
SC-280-NX15	Santa Clara	280	San Jose	Improve existing overcrossing	Monroe St	Improve existing overcrossing at Monroe St	Tier 2	3	0	1
SC-280-NX16	Santa Clara	280	San Jose	Improve existing overcrossing	College Dr	Improve existing overcrossing at College Dr	Tier 2	2	0	3
SC-280-NX17	Santa Clara	280	San Jose	New separated crossing	S 22nd St to Keyes St/Story Rd	Proposed Five Wounds Trail (I-280/S 22nd St to Keyes St/Story Rd) Class 1 ₁	Tier	3	3	3
SC-280-NX18	Santa Clara	280	San Jose	New separated crossing	Emma Prusch Park	Emma Prusch/I-280 Undercrossing (S 34th St to Emma Prusch Park) ₁	Tier	2	3	3
SC-280-X01	Santa Clara	280	San Jose	Interchange improvements - Class IV	Saratoga Ave	Explore squaring up I-680 ramps on Saratoga Avenue and providing continuous Class IV or Class I bikeways through the interchange ₁	Tier	3	3	1
SC-280-X02	Santa Clara	280	Los Altos Hills	Interchange improvements - Class I	Page Mill Rd	Convert Class IIB to Class IV. in the long term, new Class I paths and widening/extension of existing paths and sidewalks. ₂	Tier	1	3	0

Num	County	Route	City	Improvement Type	Location	Description	Tier	Mobility Score	Safety Score	Equity Score
SC-280-X03	Santa Clara	280	San Jose	New separated crossing	John Mise Ct	New POC over 280 between Lawrence Expressway and Saratoga Avenue ³	Tier	2	0	1
SC-280-X04	Santa Clara	280	Cupertino	Interchange improvements - Class IV	N Wolfe Rd	I-280/Wolfe Road Interchange Improvements in Cupertino underway to address mainline congestion and improve local traffic circulation. Improvements are needed through interchange to provide low-stress access for bicyclists.	Tier	2	0	0
SC-280-X05	Santa Clara	280	San Jose	Interchange improvements - Class IV	Winchester Blvd	I-280/Winchester Boulevard Area Improvements in Santa Clara and San Jose to address regional connectivity and local circulation. Improvements are needed through interchange to provide access for bicyclists. Winchester is a Cross County Bicycle Corridor	Tier	2	0	1
SC-280-X07	Santa Clara	280	San Jose	Interchange improvements - Class IV	Bird Ave	Upgrade existing bikeway to a Class IV bikeway, to achieve an all ages and abilities facility. Explore options to removing existing pork chop islands.	Tier	3	3	2
SC-280-X08	Santa Clara	280	San Jose	Interchange improvements - Class IV	McLaughlin Ave	Install bicycle interchange improvements, upgrade Class IIB to Class IV bikeways, explore adding a truck turning apron, and add RRFBs.	Tier	2	3	3
SC-280-X10	Santa Clara	280	San Jose	Interchange improvements - Class IV	Vine St	Install bicycle interchange improvements. Install Class IV bikeways through ¹ interchange, add green pavement markings and explore squaring up on/off ramps.	Tier	3	0	3
SC-280-X11	Santa Clara	280	San Jose	Interchange improvements - Class I	I-880/I-280 interchange	Improve bike/ped accommodation at connection of city street and crossing (e.g. provide safe and convenient bike/ped crossing of city street to reach POC, etc.)	Tier	3	0	3
SC-280-X13	Santa Clara	280	Cupertino	New separated crossing	Madera Dr	Create new separated crossing of I-280 to support eventual extension of the Stevens Creek Trail. Incorporate bike/ped ³ overcrossing in upcoming I-280/Hwy 85 interchange reconstruction.	Tier	2	0	0
SC-680-NX01	Santa Clara	680	San Jose	Overcrossing Improvement - Class IV	Cropley Ave	Upgrade overcrossing Class IIB bikeways to Class IV ³	Tier	2	0	1
SC-680-NX02	Santa Clara	680	San Jose	Interchange improvement - Class IV	S Jackson Ave	Upgrade Class II to Class IV. Install ¹ pedestrian level lighting. Square ramp.	Tier	3	0	3
SC-680-NX03	Santa Clara	680	San Jose	New separated crossing	Lower Silver Creek Trail	Class I Multi use trail to connect with proposed Silver Creek Trail ²	Tier	2	0	3
SC-680-X02	Santa Clara	680	San Jose	Interchange improvements - Class IV	S King Rd	Install continuous Class IV bike lanes through interchange and explore ³ squaring up on/off ramps.	Tier	3	3	3
SC-680-X03	Santa Clara	680	San Jose	Interchange improvements - Class IV	Capitol Expy	Install bicycle interchange improvements, such as square up ramps, install Class IV bikeways, and remove free right turns.	Tier	1	2	1
SC-680-X04	Santa Clara	680	San Jose	Interchange improvements - Class IV	Hostetter Rd	Install bicycle interchange improvements, such as square up ramps, install Class IV bikeways, and remove free right turns.	Tier	1	0	1
SC-680-X05	Santa Clara	680	San Jose	Interchange improvements - Class IV	Capitol Expy	Install bicycle interchange improvements. Install Class IV bikeways through ¹ interchange, add green pavement markings and explore squaring up on/off ramps.	Tier	2	3	3
SC-680-X06	Santa Clara	680	San Jose	Interchange improvements - Class IV	McKee Rd	Install bicycle interchange improvements. Install Class IV bikeways, add green pavement markings, square up ramps or modify free flow ramps to intersect McKee at 45 degrees. In the long term, convert full cloverleaf to partial cloverleaf.	Tier	3	0	3
SC-680-X07	Santa Clara	680	San Jose	Interchange improvements - Class IV	Berryessa Rd	Install bicycle interchange improvements such as green pavement markings, Class IV bikeways, and modify free flow ramps to intersect Berryessa at 45 degrees. In the long term, convert full cloverleaf to partial cloverleaf.	Tier	2	2	2

Num	County	Route	City	Improvement Type	Location	Description	Tier	Mobility Score	Safety Score	Equity Score
SC-680-X08	Santa Clara	680	San Jose	New separated crossing	Penetencia Creek	Consistent with VTA's I-680 Corridor Study, upgrade Class I bike/pedestrian path under I-680 at Penetencia Creek	Tier	2	0	2
SC-680-X09	Santa Clara	680	Milpitas, San Jose	Interchange improvements - Class IV	Montague Expy	Install bicycle interchange improvements, such as square up ramps, install Class IV bikeways, add signage and striping to mark bicycle conflict points and remove free right turns.	Tier	2	2	1
SC-680-X10	Santa Clara	680	San Jose	New separated crossing	Trimble/Capewood	Improve the Trimble/Capewood POC for bikes and pedestrians	Tier	2	0	1
SC-680-X11	Santa Clara	680	San Jose	Improve existing separated crossing	Madden Ave	Improve existing Madden Avenue POC for bicyclists and pedestrians.	Tier	2	0	3
SC-680-X12	Santa Clara	680	Milpitas	Overcrossing improvement - Class IV	Yosemite Dr	Upgrade Class II to Class IV bikeways	Tier 3	2	0	1
SC-680-X13	Santa Clara	680	Milpitas	Interchange improvements - Class IIB	Jacklin Rd	Delineate bike lanes through interchange	Tier 3	2	0	1
SC-680-X15	Santa Clara	680	San Jose	New separated crossing	Sierra Rd	Construct a pedestrian overcrossing connecting Sierra Road to Old Abbey Place across I-680 or connecting Zoria Court to Camino Del Rey	Tier	1	0	1
SC-880-NX01	Santa Clara	880	Milpitas	Interchange improvements - Class IV	Great Mall Pkwy	Install bicycle interchange improvements, such as square up ramps, install Class IV bikeways, add signage and striping to mark bicycle conflict points and remove free right turns.	Tier	2	0	1
SC-880-NX02	Santa Clara	880	Milpitas	Interchange improvements - Class IV	Dixon Landing	Install bicycle interchange improvements, such as square up ramps, install Class IV bikeways, add signage and striping to mark bicycle conflict points and remove free right turns.	Tier	2	2	2
SC-880-NX03	Santa Clara	880	San Jose	Interchange Improvement - Class IV	Montague Expy / 880	Install bicycle interchange improvements, such as square up ramps, install Class IV bikeways, add signage and striping to mark bicycle conflict points and remove free right turns.	Tier	1	2	3
SC-880-NX04	Santa Clara	880	San Jose	New separated crossing	Charcot Ave	Class I Multi use path to connect Charcot Ave with Silk Wood Ln, adjacent to Orchard School	Tier	2	0	3
SC-880-X01	Santa Clara	880	Milpitas	Interchange improvements - Class IV	Hwy 237/880	Install bicycle interchange improvements, such as square up ramps, install Class IV bikeways, add signage and striping to mark bicycle conflict points and remove free right turns.	Tier	3	3	2
SC-880-X02	Santa Clara	880	San Jose	Interchange improvements - Class IV	Stevens Creek Blvd	I-280/Lawrence Expressway/Stevens Creek Boulevard - Install bicycle interchange improvements, such as square up ramps, install Class IV bikeways, add signage and striping to mark bicycle conflict points and remove free right turns.	Tier	3	0	3
SC-880-X03	Santa Clara	880	San Jose	New separated crossing	O'Toole Ave	Class I Bikeway (Trail) under-crossing. Project is defined by San Jose Council-approved master plan. Connects with proposed Coyote Creek Trail.	Tier	2	0	3
SC-880-X04	Santa Clara	880	San Jose	Interchange improvements - Class IV	The Alameda	Install bicycle interchange improvements, such as square up ramps, install Class IV bikeways, add signage and striping to mark bicycle conflict points and remove free right turns.	Tier	2	3	2
SC-880-X05	Santa Clara	880	San Jose	Interchange improvements - Class IV	N 1st St	Replace free-merging on/off ramps with stop-controlled ramps to improve bike and ped accommodation and safety. Add continuous sidewalks through interchange. Add continuous Class IV or I bikeways through interchange.	Tier	2	2	3

Num	County	Route	City	Improvement Type	Location	Description	Tier	Mobility Score	Safety Score	Equity Score
SC-880-X06	Santa Clara	880	San Jose	Interchange improvements - Class IV	Coleman Ave	Replace free-merging on/off ramps with stop-controlled ramps to improve bike and ped accommodation and safety. Add continuous sidewalks through interchange. Add continuous Class IV or I bikeways through interchange.	Tier	2	0	3
SC-880-X07	Santa Clara	880	San Jose	Interchange improvements - Class IV	Brokaw Rd	Replace free-merging on/off ramps with stop-controlled ramps to improve bike and ped accommodation and safety. Add continuous sidewalks through interchange. Add continuous Class IV or I bikeways through interchange.	Tier	2	0	3
SC-880-X08	Santa Clara	880	San Jose	Interchange improvements - Class IV	Bascom Ave	Install bicycle interchange improvements, such as square up ramps, install Class IV bikeways, add signage and striping to mark bicycle conflict points and remove free right turns.	Tier	2	0	1
SC-880-X09	Santa Clara	880	San Jose	Interchange improvements - Class IV	Old Bayshore Hwy	Replace free-merging on/off ramps with stop-controlled ramps to improve bike and ped accommodation and safety. Add continuous sidewalks through interchange. Add continuous Class IV or I bikeways through interchange. Old Bayshore is a Cross County Bicycle	Tier	3	3	3
SC-880-X10	Santa Clara	880	San Jose	Undercrossing improvement - Class IV	Forest Ave	Add continuous Class IV bikeways on streets under freeway.	Tier	3	0	3
SC-223,680-NX01	Santa Clara	237, 680	Milpitas	Interchange improvements - Class IV	Calaveras Blvd/ 680 interchange	Install bicycle interchange improvements, such as square up ramps, install Class IV bikeways, add signage and striping to mark bicycle conflict points and remove free right turns.	Tier	2	0	1
SC-35,-X01	Santa Clara	35,	Unincorporated	Intersection Improvement at controlled intersection	Hwy 9/Hwy 35 intersection	Explore intersection improvements such as removing slip lanes.	Tier	0	0	0
SC-85-X02	Santa Clara	85/ 82	Mountain View	Interchange improvements - Class IV	El Camino/ 85	Install bicycle interchange improvements, such as square up ramps, install Class IV bikeways, add signage and striping to mark bicycle conflict points and remove free right turns.	Tier	3	3	1
SC-9, 17-X01	Santa Clara	9, 17	Los Gatos	Interchange improvements - Class IV	Los Gatos- Saratoga Rd	Upgrade Highway 17/9 interchange to improve pedestrian and bicycle safety, mobility, and roadway operation. Project underway to include Class IV bikeways and interchange improvements.	Tier	2	0	0
Sol-12-C01	Solano	12	Rio Vista	Corridor Improvement- Class I	Azevedo Rd - Drouin Dr	STA-planned Class I shared use path on SR-12 from Azevedo Road to the Rio Vista Bridge. Parts of project included in Caltrans led pavement project.	Tier	1	0	3
Sol-12-C02	Solano	12	Unincorporated	Corridor Improvement- Class IIB	Red Top Rd - Solona/Napa County border	STA-planned Class II bicycle lanes as part of SR 12 Jameson Canyon Road widening project. Explore buffered bike lanes.	Tier	1	0	0
Sol-12-C03	Solano	12	Unincorporated	Corridor Improvement- Class II	N Front Rd - Walters Rd	STA-planned Class II bicycle lanes or Class III bicycle route	Tier	1	0	3
Sol-12-C04	Solano	12	Rio Vista	Corridor Improvement- Class IV	Drouin Dr - Sacramento Co Line	Install Class IV bikeway through Rio Vista as part of roadway rehabilitation project on Route 12	Tier	1	1	3
Sol-12-C05	Solano	12	Unincorporated	Corridor Improvement- Class I	I-80 - Sonoma County line	Planned STA study: Class I shared use path alignment along SR 12	Tier	1	0	2
Sol-12-NX01	Solano	12	Suisun City	Intersection Improvement at controlled intersection	Emperor Dr	Enhance trail crossing. Consider installing median refuge island, redo curb ramps to be as wide as the path and be directional, install bicycle detector and bike signals head, install blank out no right on red signs.	Tier	2	0	2
Sol-12-X01	Solano	12	Rio Vista	Intersection improvement at controlled intersection	Summerset Rd	STA-planned Class II bike lanes on Summerset Road from SR 12 to Liberty Island Road	Tier	1	0	3

Num	County	Route	City	Improvement Type	Location	Description	Tier	Mobility Score	Safety Score	Equity Score
Sol-12-X02	Solano	12	Suisun City	New separated crossing	McCoy Creek	Class I shared use path along McCoy Creek passing under SR-12	Tier	1	0	2
Sol-12-X03	Solano	12	Suisun City	Intersection Improvement at controlled intersection	Marina Blvd	Install median refuge island, redo curb ramps to be as wide as the path and be directional, install bicycle detector and bike signals head, install blank out no right on red signs. See N Mathilda Ave/ W Moffett Park Dr for Class I crossing an arterial.	Tier	2	3	3
Sol-12-X04	Solano	12	Fairfield	Intersection improvement at controlled intersection	Beck Ave	Explore removing slip lanes at intersection to provide improved crossing for bikes	Tier	1	2	3
Sol-12-X05	Solano	12	Suisun City	Intersection improvement at controlled intersection	Sunset Ave	Provide enhanced connection between Grizzly Island Trail and Central County Bikeway on either side of Hwy 12	Tier	2	3	3
Sol-29-C01	Solano	29	Vallejo	Corridor Improvement- Class II	Curtola Pkwy - Maritime Academy Dr	Install Class IV bikeways on SR-29 from Curtola Parkway to Maritime Academy Drive, as recommended in STA Active Transportation Plan, and a part of the San Francisco Bay Trail Network.	Tier	3	0	3
Sol-29-C02	Solano	29	Vallejo	Corridor Improvement- Class IV	Lewis Brown Dr - Curola Pkwy	Explore road diet on Sonoma Boulevard to provide dedicated bicycle facilities. STA active transportation plan recommends Class IV	Tier	3	3	3
Sol-29-X01	Solano	29	Vallejo	Intersection improvement at controlled intersection	Georgia St	STA-planned Class II bike lanes on Georgia Street from Columbus Parkway to Mare Island Way	Tier	3	0	3
Sol-37-C01	Solano	37	Vallejo	Corridor Improvement- Class I	Wilson Ave - Walnut Ave	Provide Class I shared use path to connect the existing trail at White Slough Path with trail along Mare Island Strait.	Tier	3	0	3
Sol-37-X02	Solano	37	Vallejo	Interchange improvements - Class II	Fairgrounds Dr	Explore removing slip lanes for on ramps and other bicycle improvements	Tier	1	0	3
Sol-80-C01	Solano	80	Vallejo	Corridor Improvement- Class I	Maritime Academy Dr	Install Class I path to implement the Vallejo Bluff Trail Project and connect the Bay Area Ridge Trail, San Francisco Bay Trail, and Carquinez Strait Loop Trail.	Tier	2	0	3
Sol-80-NX01	Solano	80	Fairfield	Interchange improvements - Class IV	Manuel Campos Pkwy	Upgrade existing Class II to Class IV bikeways, add intersection improvements at on ramps/ off ramps such as elements of protected intersections. Reduce bike/ped crossing distance where possible.	Tier	1	0	1
Sol-80-NX02	Solano	80	Vallejo	Overcrossing improvements - Class IV	Magazine St	Explore installing Class IV bikeway as recommended in Solano Active 2 Transportation plan	Tier	1	0	3
Sol-80-NX03	Solano	80	Vacaville	Overcrossing improvements - Class IV	Nut Tree Rd	Upgrade existing Class II to Class IV bikeways, add intersection improvements such as elements of protected intersections.	Tier	2	0	2
Sol-80-NX04	Solano	80	Vallejo	Interchange improvements - Class IV	Redwood St/ 80	Install bicycle interchange improvements. Install Class IV bikeways, add signage and striping to mark bicycle conflict points.	Tier	2	0	2
Sol-80-NX99	Solano	80	Vallejo	New separated crossing	Turner Pkwy to Coach Ln overcrossing	Construct new Class I path from Turner Pkwy to Coach Ln	Tier	1	0	3
Sol-80-X01	Solano	80	Dixon	Interchange improvements - Class II	Pitt School Rd	Explore bike facility installation on Pitt School Road over I-80 to connect to continuous Class II bike lanes on Pitt School Road between Vacaville and Dixon	Tier	1	0	1
Sol-80-X02	Solano	80	Vacaville	New separated crossing	Ulatis Creek Trail	STA-planned Ulatis Creek Trail segment connecting Ulatis Drive to Leisure Town Road. Phase I is Class I path along creek alignment; Phase II is bicycle facilities on Allison Drive to I-80.	Tier	2	0	2
Sol-80-X03	Solano	80	Fairfield	Interchange improvements - Class II	Red Top Rd	Explore improved bicycle facilities at interchange.	Tier	1	0	0
Sol-80-X04	Solano	80	Vacaville	Interchange improvements - Class I	Leisure Town Rd	STA-planned Class I shared use path on Leisure Town Road from I-80 to Ulatis Creek	Tier	1	0	2

Num	County	Route	City	Improvement Type	Location	Description	Tier	Mobility Score	Safety Score	Equity Score
Sol-80-X05	Solano	80	Vallejo	Interchange improvements - Class II	American Canyon Rd	STA-planned Class II bike lanes on McGary Road from Vallejo City Limits to 3 Hiddenbrooke Parkway	Tier	1	0	2
Sol-80-X06	Solano	80	Vallejo	Interchange improvements - Class IIB	Georgia ST	Consider minor ramp reconfiguration to eliminate slip lanes	Tier	1	0	3
Sol-80-X07	Solano	80	Vallejo	Interchange improvements - Class IV	Tennessee St	Install bicycle interchange improvements. Install Class IV bikeways, add signage and striping to mark bicycle conflict points.	Tier	2	0	2
Sol-80-X08	Solano	80	Vallejo	New separated crossing	Maritime Academy Dr	Install Class I undercrossing at the SR-29 off ramp	Tier	1	1	3
Sol-80-X09	Solano	80	Fairfield	Interchange improvements - Class IV	Air Base Pkwy	Complete gap in existing bike lanes across interchange. Reconstruct and square up ramps. Explore installing Class IV separated bikeway if possible because of high speeds and wide ROW thru interchange.	Tier	2	2	3
Sol-80-X10	Solano	80	Fairfield	Interchange improvements - Class II	Travis Blvd	Install bike lanes across interchange to connect with bike lanes on Travis Boulevard. Reconstruct and square up ramps.	Tier	2	0	3
Sol-80-X11	Solano	80	Fairfield	Interchange improvements - Class II	W Texas St	Provide bike signal and phase for Linear Bike Trail movement through interchange area. Coordinate with City of Fairfield's West Texas Gateway Project that will connect Linear Park Path to Fairfield Transit Center.	Tier	2	3	3
Sol-80-X12	Solano	80	Vacaville	Interchange improvements - Class IV	Alamo Dr	Upgrade existing Class II to a Class IV bikeway. Install bicycle interchange improvements, such as square up ramps, add signage and striping to mark bicycle conflict points and remove free right turns.	Tier	1	1	2
Sol-80-X13	Solano	80	Vacaville	Interchange improvements - Class IV	Allison Dr	Install bicycle interchange improvements, such as square up ramps, install Class IV bikeways, add signage and striping to mark bicycle conflict points and remove free right turns.	Tier	2	1	2
Sol-80-X14	Solano	80	Vallejo	Overcrossing improvements - Class IV	Solano Ave	Provide Class IV along Solano Ave/ Spring Rd at overcrossing. Install intersection improvements at Solano Ave/ Mariposa St such as removing pork chop, reducing curb radius and adding green conflict markings.	Tier	2	0	3
Sol-84-C01	Solano	84	Unincorporated	Corridor Improvement-Shoulder improvements	Solano/Yolo County line to Ryer Road/SR-84 Ferry	STA-planned Class II bicycle route on SR-84 from Solano/Yolo County line to Ryer Road/SR-84 Ferry	Tier	1	0	3
Sol-84-C02	Solano	84	Rio Vista	Corridor Improvement-Shoulder improvements	Hwy 12 - Ryer Rd Ferry	STA-planned bicycle route on SR-84 from SR-84/River Road Ferry to Front Street	Tier	1	0	3
Sol-113-C01	Solano	113	Unincorporated	Corridor Improvement-Class I	Binghamton Rd	Provide Class I on Hawkins Road from Pitt School Road to SR-113	Tier	1	0	0
Sol-113-C02	Solano	113	Unincorporated	Corridor Improvement-Class II	Midway Rd	STA-planned Class II bicycle lanes on Midway Road from Timm Road to Pedrick Road	Tier	1	0	0
Sol-113-C03	Solano	113	Unincorporated	Corridor Improvement-Class II	Maine Prairie Rd	STA-planned Class II bicycle lanes on Maine Prairie Road from SR 113 to Pedrick Road	Tier	1	0	0
Sol-113-C04	Solano	113	Unincorporated	Corridor Improvement-Shoulder improvements	Rio Vista Rd (Hwy 12) - Parkway Blvd	Install bike facilities on SR-113 from Dixon City Limit to SR-12. Improvement part of upcoming Caltrans project.	Tier	1	0	3
Sol-680-C01	Solano	680	Benicia	Corridor Improvement-Class II	Industrial Way	Explore opportunities to improve bicycle comfort crossing under I-680 in context of City of Benicia-planned Class I shared use path on Industrial Way from Lake Herman Road to Park Road, Class I on Park Road from E. 2nd to Industrial Way, and Class II on	Tier	1	0	1
Sol-680-X01	Solano	680	Benicia	Interchange improvements - Class IV or II	Lake Herman Rd	STA-planned Class II bike lanes on Lake Herman Road from Industrial Way to the Benicia City Limit. Project is developer-funded. Perferred all ages and abilities facility type would be a Class IV	Tier	1	0	1

Num	County	Route	City	Improvement Type	Location	Description	Tier	Mobility Score	Safety Score	Equity Score
Sol-780-NX01	Solano	780	Benicia	Interchange improvements - Class IV or I	Southampton Rd	Explore installing bicycle facilities on Southampton Rd through I-780 3 interchange	Tier	1	0	1
Sol-780-X01	Solano	780	Unincorporated	New separated crossing	Home Acres Ave	Improve or replace existing bike/ped overcrossing structure.	Tier	1	0	3
Sol-780-X02	Solano	780	Vallejo	Intersection Improvement at controlled intersection	Lemon St	Explore intersection improvements including bicycle pockets and removing free right turn slip lanes. Consider creating cut-through to access Reis Avenue cul-de-sac at the intersection.	Tier	1	0	3
Sol-780-X03	Solano	780	Benicia	Interchange improvements - Class II	5th St	Explore installing bicycle facilities on 5th Street through I-780 interchange 3	Tier	1	0	1
Sol-29,37-X01	Solano	29,37	Vallejo	Interchange improvements - Class IIB	Hwy 37	Explore reconfiguring interchange to consolidate ramps, eliminate high-speed ramp entries, and provide dedicated bicycle space along SR 37	Tier	2	1	3
SoSoMa-37-C01	Solano, Sonoma, Marin	37	Novato, Vallejo	Corridor Improvement - Class I	US 101 - Walnut Ave	Explore adding a Class I multi use path along SR-37 as part of the SR-37 1 Transportation and Sea Level Rise Corridor Improvement Plan.	Tier	3	0	3
Son-116-NC02	Sonoma	116	Sebastopol	Corridor Improvement - Class IV	Keating Ave - Willow St	Ongoing study to provide recommendations for bike and ped safety and mobility improvements through Downtown Sebastopol. See Sebastopol Main Street Planning and Redesign Project corridor study.	Tier	0	0	0
Son-116-NC03	Sonoma	116	Sebastopol	Corridor Improvement - Class IV	Main St - Barnes Ave	Ongoing study to provide recommendations for bike and ped safety and mobility improvements through Downtown Sebastopol. See Sebastopol Main Street Planning and Redesign Project corridor study.	Tier	0	0	0
Son-12-NC03	Sonoma	12	Unincorporated	Corridor Improvement - Class I or IV	Napa Rd - 121	Explore options to install a Class IV or I trail. Interim option to widen shoulder and install a buffered rumble strip separated bike lane	Tier	1	2	0
Son-1-C01	Sonoma	1	Bodega Bay	Corridor Improvement - Class I	W King Trail - Mendocino County border	The Sonoma County Local Coastal Plan and County Bicycle and Pedestrian Plan identifies the Coastal Trail and the Bodega Bay Trail that follows the California coastline. The California Coastal Trail starts at the Mexico/California border and ends at the O	Tier	2	3	0
Son-1-C02	Sonoma	1	Jenner	Corridor Improvement - Class IIB	Willow Creek Rd - Valley Ford Rd	Class IIB buffered bike lanes as proposed in Sonoma County Bicycle and Pedestrian Plan	Tier	1	3	0
Son-12-C01	Sonoma	12	Unincorporated	Corridor Improvement - Class IV	Los Alamos Rd - Farmers Ln (turn in Hwy 12)	Class II bike lanes as proposed in Sonoma County Bicycle and Pedestrian Plan	Tier	3	3	0
Son-12-C02	Sonoma	12	Santa Rosa, Feters Hot Springs-Agua Caliente	Corridor Improvement - Class I	Melita Rd - Agua Caliente Rd	The completed Sonoma Valley Trail Feasibility Study recommends a separated 13 mile long Class I bike path along Hwy 12 between Melita Road and Agua Caliente Road. A copy of the feasibility study can be downloaded from Sonoma County Regional Parks web page	Tier	2	3	3
Son-12-NC01	Sonoma	12	Sonoma	Corridor Improvement - Class II	Donald St - Verano Ave	Provide Class II bike lanes to fill gap in current network.	Tier	1	0	0
Son-12-NC04	Sonoma	12	Sonoma	Corridor Improvement - Class II or IV	Verano Ave - Broadway	Explore options to provide either a Class II or IV to fill gap in current network	Tier	1	3	0
Son-12-NC05	Sonoma	12	Sonoma	Corridor Improvement - Class I	Encinas Ln - Donald St	Provide Class I multi use trail to fill gap in current network. Feasibility study underway.	Tier	1	0	3
Son-12-NC06	Sonoma	12	Sonoma	Corridor Improvement - Class IV	Agua Caliente Rd - Encinas Ln	Provide Class IV facility as identified in the Unincorporated County Active 3 Transportation Plan	Tier	1	0	1
Son-12-NC07	Sonoma	12	Unincorporated	Corridor Improvement - Class IV	Burndale Rd - County limits	Provide Class IV facility as identified in the Unincorporated County Active 3 Transportation Plan	Tier	1	0	0
Son-12-NX01	Sonoma	12	Sonoma	Intersection improvement at controlled intersection	Verano Ave	Explore installing a protected intersection to connect existing Class II and two way Class I facilities. Remove pork chop.	Tier	1	0	0

Num	County	Route	City	Improvement Type	Location	Description	Tier	Mobility Score	Safety Score	Equity Score
Son-12-NX02	Sonoma	12	Santa Rosa	Interchange improvements - Class I or IV	Stony Point Rd	Install enhanced crossing at Joe Rodoto Trail. Consider redoing curb ramps to be as wide as the path and be directional, bicycle detector and bike signals head, blank out no right on red signs. See N Mathilda Ave/ W Moffett Park Dr for Class I crossing	Tier	1	3	3
Son-12-NX03	Sonoma	12	Santa Rosa	Intersection improvement at controlled intersection	Fulton Rd	Ongoing study to install bikeway improvements. Explore installing low stress bicycle facility through intersection, such as a protected intersection or other. Incorporate Class I or Class IV through intersection. Connect bikeway with adjacent trail.	Tier	1	1	3
Son-12-NX04	Sonoma	12	Sonoma	Intersection improvement at uncontrolled intersection	8th St E	Enhance crossing for bike/ped as identified in the Sonoma County Active Transportation Plan	Tier	1	0	0
Son-12-NX05	Sonoma	12	Unincorporated	Intersection improvement at uncontrolled intersection	Encinias Ln	Enhance crossing for bike/ped as identified in the Sonoma County Active Transportation Plan	Tier	1	2	1
Son-12-NX06	Sonoma	12	Unincorporated	Intersection improvement at uncontrolled intersection	Hawthorne Ave	Enhance crossing for bike/ped as identified in the Sonoma County Active Transportation Plan. Consider a Pedestrian Hybrid Beacon or a RRFB	Tier	1	0	1
Son-12-NX07	Sonoma	12	Unincorporated	Intersection improvement at uncontrolled intersection	Sierra Dr	Enhance crossing for bike/ped as identified in the Sonoma County Active Transportation Plan. Consider a Pedestrian Hybrid Beacon or a RRFB	Tier	1	0	1
Son-12-NX08	Sonoma	12	Unincorporated	Intersection improvement at uncontrolled intersection	Central Ave	Enhance crossing for bike/ped as identified in the Sonoma County Active Transportation Plan. Consider a Pedestrian Hybrid Beacon or a RRFB	Tier	1	0	1
Son-12-NX09	Sonoma	12	Unincorporated	Intersection improvement at uncontrolled intersection	Waterman Ave	Enhance crossing for bike/ped as identified in the Sonoma County Active Transportation Plan. Consider a Pedestrian Hybrid Beacon or a RRFB	Tier	1	0	1
Son-12-NX10	Sonoma	12	Unincorporated	Intersection improvement at uncontrolled intersection	Lichtenberg Ave	Enhance crossing for bike/ped as identified in the Sonoma County Active Transportation Plan. Reduce corner turn radius. Consider a Pedestrian Hybrid Beacon or a RRFB	Tier	1	0	1
Son-12-NX11	Sonoma	12	Unincorporated	Intersection improvement at uncontrolled intersection	Fetters Ave	Enhance crossing for bike/ped as identified in the Sonoma County Active Transportation Plan. Consider a Pedestrian Hybrid Beacon or a RRFB	Tier	1	0	1
Son-12-X01	Sonoma	12	Santa Rosa	Interchange improvements - Class II	Santa Rosa Ave	Explore installing low stress bicycle facility through interchange	Tier	3	0	3
Son-12-X02	Sonoma	12	Santa Rosa	Interchange improvements - Class IIB	Brookwood Ave	Explore installing low stress bicycle facility through interchange	Tier	2	0	3
Son-12-X03	Sonoma	12	Sebastopol	New separated crossing	Laguna de Santa Rosa	An improved north-south seasonal trail (Laguna de Santa Rosa Trail) crossing below the Highway 12 bridge that crosses the Laguna de Santa Rosa is needed. The seasonal trail will connect the Laguna de Santa Rosa Trail to the Joe Rodoto Trail.	Tier	1	0	3
Son-101-NX01	Sonoma	101	Petaluma	Interchange improvements - Class IV	Petaluma Blvd N/Old Redwood Highway	Install bicycle interchange improvements, upgrade existing Class II to Class IV bikeways, add signage and striping to mark bicycle conflict points, remove or improve floating bike lanes and remove free right turns.	Tier	0	0	1
Son-101-NX02	Sonoma	101	Windsor	Interchange improvements - Class I	Old Redwood Hwy	Install Class I bikeways. Consider installing intersection improvements such as partially protected bikeway or elements of protected intersections. Project Underway.	Tier	2	0	1
Son-101-NX03	Sonoma	101	Santa Rosa	Interchange improvements - Class IV	Mendocino Avercrossing	Install Class IV bikeways through interchange. Add green conflict markings and square up ramps.	Tier	2	0	3

Num	County	Route	City	Improvement Type	Location	Description	Tier	Mobility Score	Safety Score	Equity Score
Son-101-NX05	Sonoma	101	Petaluma	Overcrossing improvements - Class II or IV	Corona Rd	Overcrossing improvements - Class II or IV	Tier 3	1	0	1
Son-101-NX06	Sonoma	101	Cloverdale	Undercrossing improvements - Class II or IV	East 1st St	Install Class II or Class IV bikeway at undercrossing. Install a sidewalk on the northside.	Tier	0	0	2
Son-101-NX07	Sonoma	101	Rohnert Park	Interchange improvements - Class IV	Rohnert Park Expy	Explore upgrading existing Class II to a Class IV	Tier	2	2	3
Son-101-NX08	Sonoma	101	Cloverdale	Interchange improvements - Class IV	Citrus Fair Dr	Upgrade existing Class II to a Class IV, upgrade sidewalks, enhance crossings and install conflict markings.	Tier	1	0	2
Son-101-NX09	Sonoma	101	Unincorporated	Interchange improvements - Class IV	Airport Blvd	Upgrade Class II to Class IV. Install bicycle interchange improvements, such as square up ramps, provide only as many on-ramp entry lanes as the number of lanes that feed into them during any given signal phase, add signage and striping to mark bicycle c	Tier	1	1	1
Son-101-NX10	Sonoma	101	Unincorporated	Overcrossing improvements - Class II or IV	Fulton Rd	Upgrade Class II to a Class IV at overcrossing	Tier	1	0	1
Son-101-NX11	Sonoma	101	Unincorporated	New separated crossing	SMART Trail near Old Redwood Hwy/101	Install new separated crossing with future SMART trail	Tier	1	0	1
Son-101-X01	Sonoma	101	Santa Rosa	Interchange improvements - Class IV	3rd St	Upgrade Class II to Class IV. Reduce crossing distance at on ramp. Add green conflict markings.	Tier	3	0	3
Son-101-X03	Sonoma	101	Santa Rosa	Interchange improvements - Class IV	Steele Ln	Explore low stress bicycle facility and bike signal in are with significant traffic and multiple turn lanes	Tier	3	3	3
Son-101-X04	Sonoma	101	Santa Rosa	Interchange improvements - Class IV	Bicentennial Way	Explore replacing free flow off-ramps from 101 NB with single, signalized crossing. Potentially signalize 101 SB on ramps. Upgrade Class II bike lanes to Class IV bikeways.	Tier	2	0	3
Son-101-X05	Sonoma	101	Cotati, Rohnert Park	New separated crossing	Copeland Creek	Explore separated crossing to connect nearby existing and planned creek trails. PSR-PDS underway, PE phase funded.	Tier	2	2	3
Son-101-X06	Sonoma	101	Rohnert Park	Interchange improvements - Class IV	Golf Course Dr	Install low stress bicycle facilities through interchange on Commerce Boulevard. Consider Class IV bikeways if possible. Consider bicycle signal. Explore options to remove the floating bike lanes.	Tier	2	0	3
Son-101-X07	Sonoma	101	Cotati	Interchange improvements - Class IV	Gravenstein Hwy/Hwy 116	Upgrade existing bike lanes through interchange to a Class IV. Explore reducing curb radii of on and off ramps and add conflict markings.	Tier	2	0	1
Son-101-X08	Sonoma	101	Cotati	Interchange improvements - Class IV	W Sierra Ave	Reduce curb radii and square up the existing ramps where they meet with W Sierra Ave to shorten crossing distance for bicyclists. Add stop sign on Sierra Ave at ramp entrances to eliminate free right movement. Upgrade existing Class II to a Class IV	Tier	2	1	1
Son-101-X09	Sonoma	101	Petaluma	Interchange improvements - Class IIB	E Washington St	Consider realigning NB 101 on ramp from west side of Washington to the T intersection of the NB 101 off ramp and eliminating the slip ramp. Consider bike signal phasing on e side of washington to allow bikes to get ahead of merging traffic.	Tier	2	3	2
Son-101-X10	Sonoma	101	Petaluma	New separated crossing	Petalum Blvd S	Install Class I path under the US 101 Petaluma River Bridge on the north side of the river. This project will connect Bautista Way to the Petaluma Marina to the east.	Tier	1	0	2
Son-101-X11	Sonoma	101	Petaluma	New separated crossing	McKenzie Ave	Explore improving overcrossing with accessible approaches and improved lighting	Tier	2	3	2
Son-101-X12	Sonoma	101	Windsor	Interchange improvements - Class II	Arata Ln	Upgrade bike lanes to buffered bike lanes. Add green conflict markings.	Tier	2	0	1
Son-101-X13	Sonoma	101	Windsor	New separated crossing	Old Redwood Hwy/Healdsburg Ave	Provide separated bike/ped crossing of US 101 in Windsor at Old Redwood Highway	Tier	2	2	1
Son-101-X14	Sonoma	101	Windsor	Interchange improvements - Class IV	Shiloh Rd	Install Class IV bikeways through interchange. Square up ramps and install conflict markings.	Tier	1	1	1

Num	County	Route	City	Improvement Type	Location	Description	Tier	Mobility Score	Safety Score	Equity Score
Son-101-X15	Sonoma	101	Larkfield-Wikiup	New separated crossing	Mark West Creek	The proposed Mark West Creek Trail provides an east-west connection from Old Redwood Highway to the Santa Rosa Airport. The trail follows the Mark West Creek corridor and will need to cross below the Airport Boulevard off-ramp and Highway 101.	Tier	2	1	1
Son-101-X16	Sonoma	101	Unincorporated	New separated crossing	Santa Rosa Ave/Roberts Lake Rd	The proposed Bellevue Creek Trail provides an east-west connection starting at Petaluma Hill Road and continues west to the proposed Laguna de Santa Rosa Trail. An overhead crossing of Hwy 101 is needed.	Tier	2	0	3
Son-101-X17	Sonoma	101	Healdsburg	Interchange improvements - Class II	Westside Rd	Provide signage, striping, sidewalks and bike lanes on Westside Rd thru US 101 interchange. Bike need improvement identified in Rohnert Park Bike Plan.	Tier	2	0	1
Son-101-X18	Sonoma	101	Healdsburg	Interchange improvements - Class IV	Dry Creek Rd	Provide signage, striping, and Class IV bikeway on Dry Creek Rd thru US 101 interchange. Bike need improvement identified in Rohnert Park Bike Plan.	Tier	0	0	1
Son-101-X19	Sonoma	101	Healdsburg	Interchange improvements - Class II	Healdsburg Ave	Explore minor ramp reconfiguration to square up off-ramps and on-ramps, remove slip lanes	Tier	1	2	1
Son-101-X20	Sonoma	101	Larkfield-Wikiup	Interchange improvements - Class I or IV	River Rd	Improve bicycle facilities on Mark West Springs Road and River Road through interchange. Square up ramps, upgrade to class IV facilities, add conflict markings, reduce crossing distance. Install a Class I or Class IV	Tier	1	3	1
Son-101-X21	Sonoma	101	Santa Rosa	New separated crossing	Edwards Ave/ Elliott Ave	Build separated crossing over US-101 as proposed in Santa Rosa Project Study Report	Tier	3	0	3
Son-101-X22	Sonoma	101	Santa Rosa	Interchange improvements - Class II	College Ave	Explore minor interchange improvements on College Avenue through the interchange	Tier	3	1	3
Son-101-X23	Sonoma	101	Santa Rosa	Interchange improvements - Class I	Colgan Ave	Connect proposed Colgan Creek trail to bike lanes. Interchange is offset with numerous conflicts. Suggest reconstruct interchange or provide separate bike/ped overcrossing. Consistent with Sonoma County Bicycle and Pedestrian Plan	Tier	2	0	3
Son-101-X24	Sonoma	101	Unincorporated	Interchange improvements - Class IV	Todd Rd	Explore options for low stress bicycle facility given little room bike lanes on current bridge. May need to replace bridge, provide separate bike/ped facility, or have shared accommodation on the bridge. Consider striping approach to the bridge	Tier	1	0	3
Son-101-X26	Sonoma	101	Unincorporated	Interchange improvements - Class II	Lytton Springs Rd	Provide signage, conflict marking, and bike lanes on Lytton Springs Rd thru US 101 interchange.	Tier	1	0	1
Son-101-X27	Sonoma	101	Unincorporated	Interchange improvements - Class II	Geyserville Ave	Provide signage, striping, and bike lanes on Geyserville Ave thru US 101 interchange.	Tier	1	0	1
Son-101-X28	Sonoma	101	Unincorporated	Interchange improvements - Class IIB	Canyon Rd	Provide signage, striping, and buffered bike lanes on Canyon Rd thru US 101 3 interchange	Tier	0	0	1
Son-101-X29	Sonoma	101	Unincorporated	Interchange improvements - Class IIB	Theresa Dr	Provide signage, striping, and buffered bike lanes on Theresa Dr thru US 101 3 interchange	Tier	0	0	2
Son-116-C01	Sonoma	116	Cotati	Corridor Improvement- Class IV	Redwood Dr	Provide continuous bicycle facility from Redwood Drive through US-101 3 interchange area	Tier	2	0	1
Son-116-C02	Sonoma	116	Petaluma	Corridor Improvement- Class IV	US 101 - Browns Ln	Install Class IV separated bikeway on Lakeville Highway. As an interim project install buffered Class II throughout corridor.	Tier	2	0	0
Son-116-C03	Sonoma	116	Sebastopol	Corridor Improvement- Class I	Sebastopol Ave - Stony Point Rd	Install a Class I multi use path as proposed in the Petaluma Sebastopol Trail Feasibility Study. Study also detailed related improvements that could be constructed to provide a trail that would connect Sebastopol.	Tier	2	2	0

Num	County	Route	City	Improvement Type	Location	Description	Tier	Mobility Score	Safety Score	Equity Score
Son-116-C04	Sonoma	116	Guerneville, Forestville	Corridor Improvement- Class I	Hwy 1 - River Rd	The proposed Russian River Trail is identified as Class I bike path in the Sonoma County Bicycle and Pedestrian Plan. As an interim project provide buffered bike lanes on SR 116.	Tier	2	2	3
Son-116-C06	Sonoma	116	Guerneville	Corridor Improvement- Class IIB	Drake Rd - Occidental Rd	Proposed Class IIB buffered bike lanes in the Sonoma County Bicycle and Pedestrian Plan (2010)	Tier	2	3	3
Son-116-C07	Sonoma	116	Sebastopol, Cotati	Corridor Improvement- Class II	Cooper Rd - Madrone Ave	Provide bike lanes on Hwy 116 from Sebastopol city limits to Cotati city limits	Tier	2	2	1
Son-116-C08	Sonoma	116	Guerneville, Sebastopol	Corridor Improvement- Class I	River Rd - Mill Station Rd	Long term provide Class I multi use path on Hwy 116 from Guerneville to Sebastopol. As an interim project provide a Class IIB.	Tier	2	3	3
Son-116-NC01	Sonoma	116	Cotati	Corridor Improvement- Class I	Redwood Dr - Cotati City western limits	Multi Use trail identified in Cotati Active Transportation Plan. Class I facility parallel to Highway 116 with connectivity to the citywide network.	Tier	3	0	1
Son-116-NX01	Sonoma	116	Cotati	Intersection improvement at uncontrolled intersection	W Cotati Ave	Improve crossing for bike/ped in coordination with the West Cotati Realignment project, including signalization and new crosswalks.	Tier	2	0	1
Son-116-NX02	Sonoma	116	Cotati	Intersection improvement at uncontrolled intersection	Madrone Ave	Explore crossing improvements to increase local road connectivity. Evaluate feasibility and effectiveness RRFB or HAWK across Highway 116.	Tier	2	0	1
Son-116-NX03	Sonoma	116	Unincorporated	Intersection improvement at uncontrolled intersection	Danmar Dr	Improve crossing for bike/ped. Facilitate connection of bike blvd at end of Danmar Drive to connect to bike path.	Tier	2	0	1
Son-116-NX03	Sonoma	116	Unincorporated	Intersection improvement at uncontrolled intersection	Danmar Dr	Improve crossing for bike/ped. Facilitate connection of bike blvd at end of Danmar Drive to connect to bike path.	Tier	2	0	1
Son-116-NX04	Sonoma	116	Unincorporated	Intersection improvement at uncontrolled intersection	Covert Ln	Crossing improvements to improve access across SR-116 to/from Covert Lane. Consider installing a roundabout	Tier	2	1	1
Son-116-NX06	Sonoma	116	Gerneville	Intersection improvement at uncontrolled intersection	Church St	Enhance crossing for bike/ped as identified in the Sonoma County Active Transportation Plan. Consider a Pedestrian Hybrid Beacon or a RRFB.	Tier	2	0	0
Son-116-NX07	Sonoma	116	Gerneville	Intersection improvement at uncontrolled intersection	Mill St	Enhance crossing for bike/ped as identified in the Sonoma County Active Transportation Plan. Consider a Pedestrian Hybrid Beacon or a RRFB.	Tier	2	1	0
Son-116-NX08	Sonoma	116	Gerneville	Intersection improvement at uncontrolled intersection	Brookside Ln	Enhance crossing for bike/ped as identified in the Sonoma County Active Transportation Plan. Consider a Pedestrian Hybrid Beacon or a RRFB.	Tier	2	0	0
Son-121-C01	Sonoma	121	Unincorporated	Corridor Improvement- Class I	8th St E - Burndale Rd	The Sonoma County Bay Trail Corridor Plan (2005) identified a section of the SF Bay Trail along Hwy 12/121 between 8th St East and Burndale Rd. An improved ped/bike crossing is needed at the 8th Street East and Hwy 12/121 intersection.	Tier	1	0	0
Son-121-C02	Sonoma	121	Unincorporated	Corridor Improvement- Class I	Browns Ln - Sears Pt Rd/Hwy 37	Class I trail in the long term. Install Class IIB bikeway in the near term.	Tier	2	0	0
Son-128-NC01	Sonoma	128	Unincorporated	Corridor Improvement- Class IIB	Napa County Line - Geyserville Rd	Provide Class IIB bike lanes on Hwy 128 from Napa County line to Geyserville Rd.	Tier	0	2	1
Son-128-NC02	Sonoma	128	Unincorporated	Corridor Improvement- Class I or IV	Sonoma County Line - N Cloverdale Blvd	Provide Class I or IV as identified in the Unincorporated County Active Transportation Plan	Tier	1	0	2
Son-128-NC03	Sonoma	128	Unincorporated	Corridor Improvement- Class IIB	Cloverdale City limits - McCray Rd	Provide Class IIB as identified in the Unincorporated County Active Transportation Plan	Tier	1	0	2
Son-128-NC04	Sonoma	128	Unincorporated	Corridor Improvement- Class IIB	Canyon Rd - Geyserville Ave	Provide Class IIB as identified in the Unincorporated County Active Transportation Plan	Tier	1	0	1

[illegible]