

# Marin City Second Culvert Project

California Department of Transportation, District 4

June 18, 2025



# Caltrans District 4 Overview



## Nine Counties

- Alameda
- Contra Costa
- Santa Clara
- San Mateo
- Solano
- San Francisco
- Marin
- Sonoma
- Napa

## 101 Cities

## Both Metro & Rural Communities

## Seven State-Owned and Operated Toll Bridges

## 6500 Highway Lanes Miles

- 690 Freeway Centerline Miles
- 770 Conventional Highway
- 150 Lane Miles at risk of Sea Level Rise

## 9 Federally Recognized Tribes

## 2 Ferries

## 5 Public Seaports

## Many Stakeholders:

- MTC/BATA/ BAIFA,
- Coastal Commission
- BCDC
- BACTA
- Self-help counties
- Silicon Valley Employers
- Wine country
- Urban & Rural Communities



# Accessing Interpretation / Acceso a la interpretación



Please select your preferred language for the meeting.

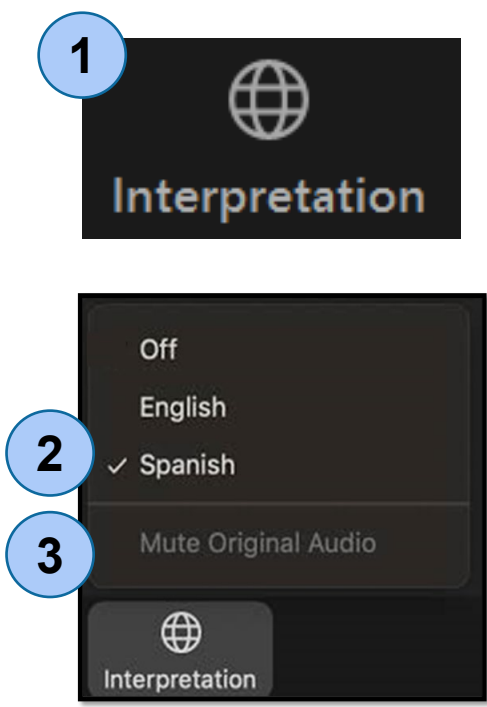
## ENGLISH/INGLÉS

- 1. In your meeting/webinar controls, click Interpretation.
- 2. Select the language that you would like to hear: **English**

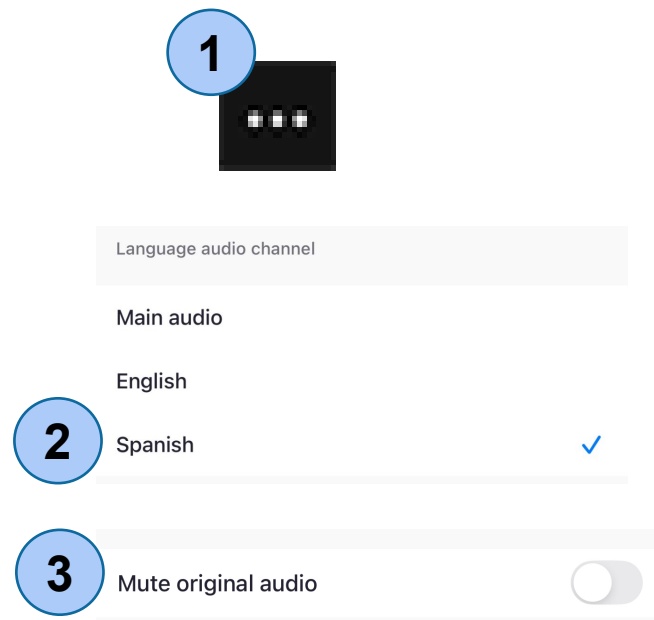
## SPANISH/ESPAÑOL

- 1. En los controles de la reunión o el seminario web, haga clic en Interpretación.
- 2. Haga clic en el idioma que desee escuchar: **español** (Spanish).
- 3. (Opcional) Para escuchar solo el idioma interpretado, haga clic en **Silenciar audio original** (Mute Original Audio).

### Windows | macOS



### Android | iOS



# Welcome!

## Presentation

- Project Overview and Status
- Draft Environmental Document
- Next Steps

## Question and Answer Session

- **In Person:** Fill out speaker card and wait until your name is called to come to the microphone.
- **On Zoom:** Use 'Raise Hand' for verbal questions. You may also use 'Q&A' for written questions, which will be addressed if time permits.
- Questions asked during this meeting are not considered official public comments. All verbal questions will have a **2**-minute time limit.
- Submit official comments using the comment card tonight or send via e-mail or mail following the meeting.

# Speakers and Facilitators



## **Speakers:**

- Eddie Kim, Project Manager
- Chris Pincetich, Branch Chief, Office of Environmental Analysis
- Mark Morancy, Senior Transportation Engineer, Hydraulics
- Archie Tan, Project Engineer, Design
- Brian Rowley, Office Chief, Office of Water Quality
- William Woolery, Senior Transportation Engineer, Traffic Operations

## **Facilitators:**

- Bart Ney, Office Chief, Public Affairs & Strategic Communications
- Laura Adleman, Senior Outreach and Engagement Specialist

# Project Overview





# Project Overview

## The Project would:

- Add a new culvert across US 101 to reduce stormwater discharge to existing culvert at the Marin City Pond.
- Replace damaged storm drain pipes on and near Donahue Street.
- Repair pavement on US 101.



**Purpose:** Reduce flooding and repair damaged storm drain pipes in the vicinity of the US 101/Donahue Street interchange.

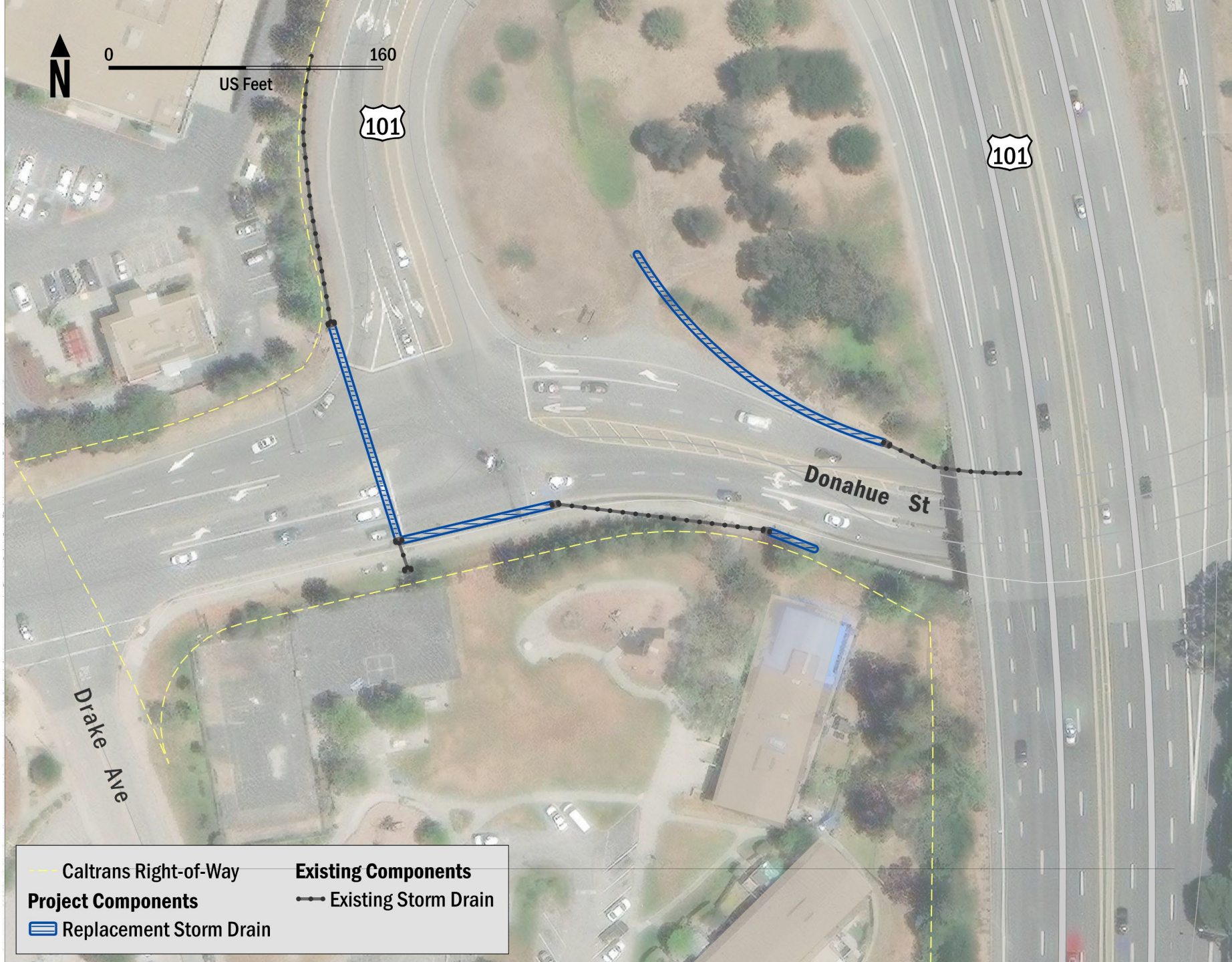
**Need:** Drainage demands from the Marin City Pond and surrounding stormwater inflow exceed the capacity of the existing box culvert under US 101 to discharge stormwater to Richardson Bay. Damaged storm drain pipes on Donahue Street could collapse, leading to roadway damage.






<https://youtu.be/Cf13GB2i8nY>







 Caltrans Right-of-Way	<b>Existing Components</b>
<b>Project Components</b>	 Existing Storm Drain
 Replacement Storm Drain	

# Temporary Closures



Construction may involve temporary nighttime lane closures and **up to five 55-hour weekend partial closures.**

- Each closure would involve closing one or more lanes of US 101 from Friday night (typically after 8 p.m.) until approximately 5 a.m. on the following Monday.
- At least two lanes in each direction of US 101 would be kept open to traffic at all times.
- Expect delays on US 101 on Saturdays and Sundays of the partial closure weekends, especially from 5 p.m. to 8 p.m.
- Caltrans will conduct extensive public outreach and coordination to minimize travel delays.

A temporary detour for the Mill Valley–Sausalito Pathway with one-way traffic control would be provided during the Weekend 2 and/or Weekend 4 55-hour partial closures.

- The detour would entail temporarily widening the western side of the pathway to maintain bicycle and pedestrian access.
- The temporary detour would be removed following pipe culvert installation.

Strategy for potential incorporation of permanent treatment best management practice includes biofiltration.

- Biofiltration strips use natural processes to treat stormwater runoff.
- They are composed of sloped, vegetated areas next to impervious surfaces.
- Roadway pollutants, such as sediment, metals, oils, and greases are managed via settling, infiltration, and up-take by vegetation.

# Draft Environmental Document





# What is an Environmental Document?



## Marin City Second Culvert Project



### Initial Study with Proposed Mitigated Negative Declaration

MARIN COUNTY, CALIFORNIA  
DISTRICT 4 – MRN – 101 (PM 3.3–3.7)  
04-2Y050 / 0423000061

Prepared by the  
State of California, Department of Transportation

June 2025



- Meets the California Environmental Quality Act (CEQA).
- Informs you about the proposed project.
- Identifies potential environmental impacts.
- Incorporates your feedback for decision-making.



Available online at  
[CaltransD4Environmental.com](https://CaltransD4Environmental.com)

# Topics Covered in the Environmental Document



## No Impact

- Agriculture and Forest Resources
- Mineral Resources
- Population and Housing

## Less Than Significant Impact

- Aesthetics
- Air Quality
- Cultural Resources
- Energy
- Geology and Soils
- Greenhouse Gas Emissions
- Hazards and Hazardous Materials
- Hydrology and Water Quality
- Land Use and Planning
- Noise
- Public Services
- Recreation
- Transportation and Traffic
- Tribal Cultural Resources
- Utilities and Service Systems
- Wildfire

## **Less Than Significant with Mitigation:** Biological Resources (Wetlands and Waters)

**MM-BIO-1, Impacts to Wetlands.** Caltrans will mitigate for permanent impacts to aquatic resources at a ratio determined appropriate in coordination with regulatory agencies with jurisdiction, which are anticipated to be USACE and RWQCB. The mitigation credit, in-lieu fee contribution, or mitigation site will be chosen in consultation with regulatory agencies with jurisdiction.

# Anticipated Permits and Approvals



Agency	Permit, Approval, or Agreement
National Marine Fisheries Services (NMFS)	Section 7 Consultation and Essential Fish Habitat Consultation: Letter of Concurrence request
U.S. Army Corps of Engineers (USACE)	Clean Water Act Section 404 Nationwide Permit, Section 10 Navigable Waters Permit
San Francisco Bay Regional Water Quality Control Board (RWQCB)	Water Quality Certification (CWA Section 401)
San Francisco Bay Conservation and Development Commission (BCDC)	Regionwide Permit 2 or Administrative Permit
Marin County Parks	Section 4(f) Formal Concurrence

# Next Steps



# Project Timeline

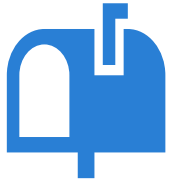




# How to Read and Comment on the Draft Environmental Document



Visit **CaltransD4Environmental.com** or email  
[Christopher.Pincetich@dot.ca.gov](mailto:Christopher.Pincetich@dot.ca.gov) for printed copies



## **Mail:**

Christopher Pincetich  
Caltrans District 4  
PO Box 23660, MS 8B  
Oakland, CA 94623-0660

**July 7, 2025**

is the last day to  
submit comments!



## **Email:**

[Marin\\_City\\_Second\\_Culvert\\_Project@dot.ca.gov](mailto:Marin_City_Second_Culvert_Project@dot.ca.gov)

# What Happens with Your Comments



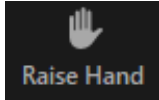
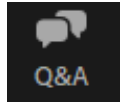
- Each written comment submitted will be recorded and reviewed by the project team before an alternative or no alternative is selected. Comments will be included in the Final Environmental Document with a response.
- If comments reveal new information not already covered in the Draft Environmental Document, the team will revise the document to address the new information.
- We expect to have all revisions completed and our Final Environmental Document ready for release in the Fall.
- If the project is given environmental approval and funding is obtained, Caltrans could design and construct all or part of the project.

# Q&A Session



# Question and Answer Session



- **In Person:** Fill out speaker card and wait until your name is called to come to the microphone.
- **On Zoom:** Verbal questions: Use the “Raise hand” icon 
  - We’ll call on you by name or the last few digits of your phone number when it’s your turn
    - Or if you are dialing in by phone, press \*9 to raise your hand
    - Press \*6 to unmute once called upon
  - Written questions (time permitting): Use the ‘Q&A’ icon 
- All verbal questions will have a **2**-minute time limit.
- Questions asked during this meeting are not considered official public comments.
- Submit official comments by comment card, e-mail, or mail.



# Thank you!

---

[CaltransD4Environmental.com](https://CaltransD4Environmental.com)

[Marin\\_City\\_Second\\_Culvert\\_Project@dot.ca.gov](mailto:Marin_City_Second_Culvert_Project@dot.ca.gov)