

RESILIENTSR37



State Route 37 Planning and Environmental Linkages Study Public Meeting: Tuesday, January 25, 2022, 5:30 – 7:00 p.m.

Help Caltrans plan for the future of State Route 37

The California Department of Transportation (Caltrans) and its transportation agency partners in Marin, Napa, Solano, and Sonoma counties, along with the regional Metropolitan Transportation Commission (MTC), are preparing a Planning and Environmental Linkages (PEL) Study for State Route 37 and would like your input!

Please join us on Tuesday, January 25, 2022 from 5:30 – 7:00 p.m. for a virtual public meeting. At the meeting, the Caltrans PEL team will share information on the project purpose and need, the methods being developed to evaluate alignments, and some preliminary alignments. We invite you to attend to learn more, ask questions, and share your ideas.

Join the virtual public meeting on Tuesday, January 25, 2022 at 5:30 p.m.

Connect to the public meeting using the Zoom link below:

<https://us02web.zoom.us/j/87256452910>

Passcode: 762806

Or join by phone: 1-877-853-5247

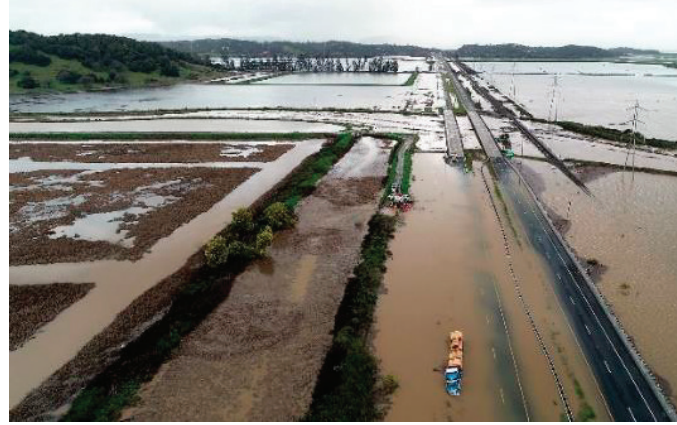
Meeting ID: 872 5645 2910

Meeting Password: 762806

It is critical that community members who rely on State Route 37 have opportunities to provide input on the planning process. You are invited to share your ideas for the future of State Route 37 Corridor at this important milestone!

If you are unable to attend the public meeting, you can still provide input and ideas or ask questions:

- **Sign up for PEL Study updates by emailing** StateRoute37@dot.ca.gov **or visiting our website** <https://dot.ca.gov/caltrans-near-me/district-4/d4-projects/d4-37-corridor-projects/37-planning-environmental-linkages>
- **Follow us on Facebook:** <https://www.facebook.com/CaltransBayAreaD4/> **and Twitter** @CaltransHQ, @Route37, and @CaltransDist4, and share PEL Study updates on your social media
- **Call the SR 37 Public Information Line at** (510) 286-1204 to speak with a PEL Study representative
- **Email questions and suggestions to** StateRoute37@dot.ca.gov



Corridor Overview

State Route (SR) 37, a 21-mile vital transportation link in the region connecting four North Bay counties, is extremely vulnerable to flood-related closures due to sea level rise and experiences a high level of congestion. Caltrans, MTC, and the four North Bay Area counties are partners in the Resilient SR 37 program working on multiple studies to form plans that will address the corridor's critical flooding, sea level rise, congestion, ecological, and multimodal issues.

Planning and Environmental Linkages (PEL) Study Status

The goal of the PEL Study is to collaboratively develop planning alternatives that address corridor-wide transportation needs while considering the concerns of communities, agencies, stakeholders, and the public. The PEL Study will lay out a vision for the Highway 37 corridor by including different needs, activities, and projects in one umbrella document. The PEL Study will help Caltrans understand the sequencing for ultimate solutions, such as traffic congestion, sea level rise and extreme weather events.

There are projects underway right now, including a congestion relief project from Sears Point to Mare Island as well as projects in the western portions of the SR 37 corridor that are being impacted by sea level rise. The work that is being done for these current efforts will not preclude long-term solutions, and the PEL Study is being developed in parallel with these projects.

At the present time, Caltrans has completed a Purpose and Need Statement for the PEL Study and is currently developing screening evaluation criteria and preliminary alternatives. Your input at this important milestone of the PEL Study will help shape the future of State Route 37.

After completion of the PEL Study, Caltrans will conduct the California Environmental Quality Act (CEQA) and National Environmental Policy Act (NEPA) processes to determine which planning alternative is selected and what ultimately will be built.

For additional information on the PEL Study, the collaborative effort of Bay Area transportation agencies and next steps in the process, visit

<https://dot.ca.gov/caltrans-near-me/district-4/d4-projects/d4-37-corridor-projects/37-planning-environmental-linkages>.

Is English your second language? We can help. Request assistance by calling 510.286.1204 and allow three days for response.

¿El inglés es tu segundo idioma? Podemos ayudar. Solicitar asistencia llamando al 510.286.1204 y permitir tres días para la respuesta.

Ang Ingles ba ang pangalawang wika mo? Makakatulong tayo. Humiling ng tulong sa pamamagitan ng pagtawag sa 510.286.1204 at payagan ang tatlong araw para sa tugon.



ONE CORRIDOR, ONE TEAM, MANY SOLUTIONS