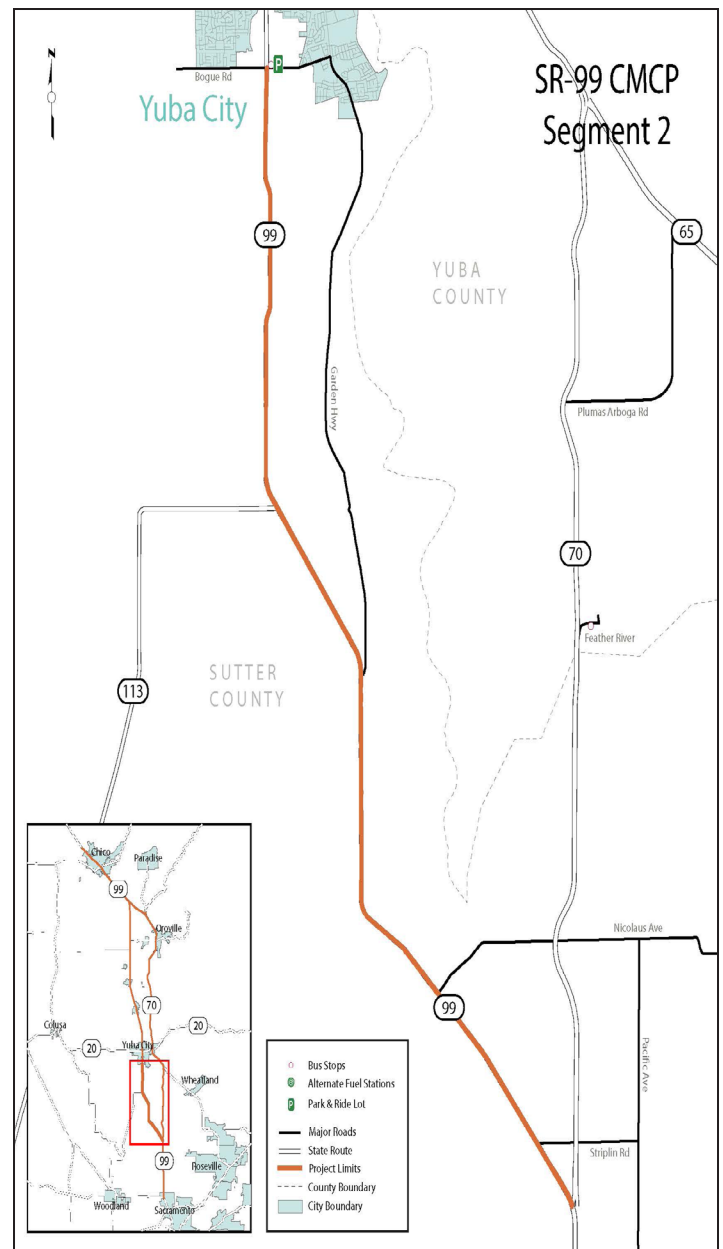
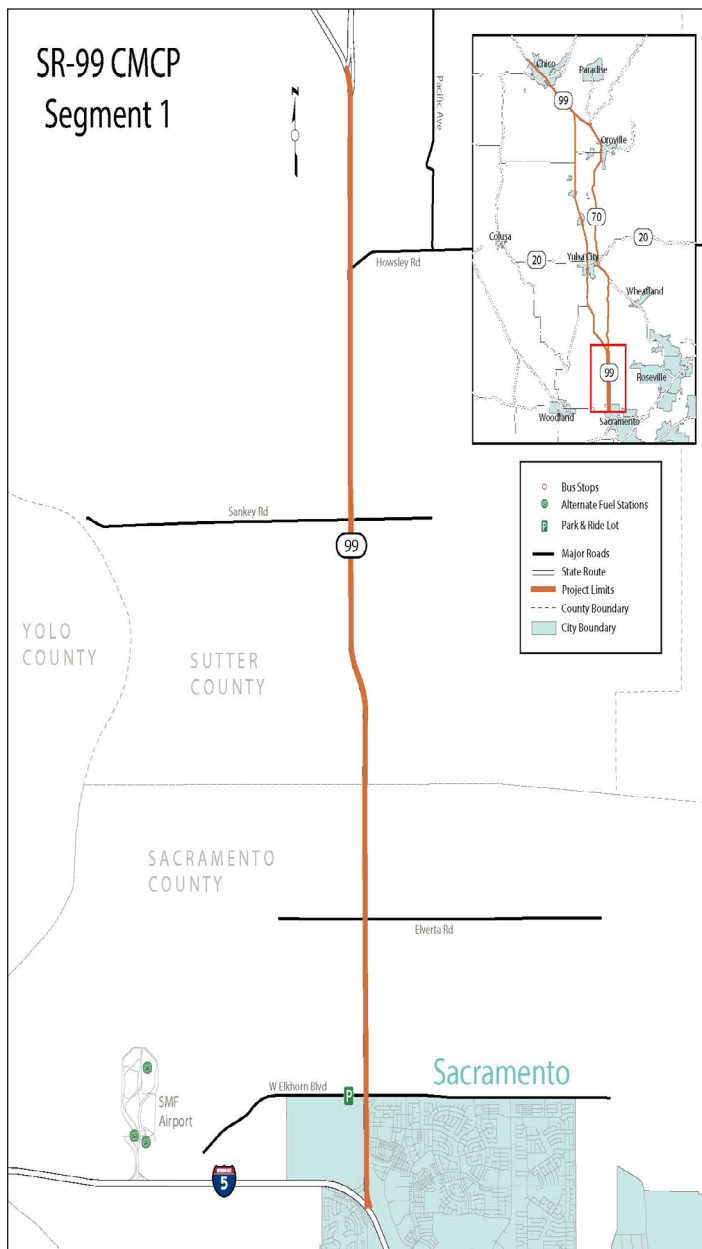


Segment 1: Sacramento and Sutter Counties

Segment 1 begins in Sacramento County on SR 99 (PM 32.120) at the junction with the I-5 and ends on SR 99 in Sutter County (R8.070) at the junction of SR 99 and SR 70. Land use in this segment is suburban in design before leading into the more rural setting of the corridor.

Segment 2: Sutter County

Segment 2 begins in Sutter County on SR 99 (PM R8.070) at the junction of SR 99 and SR 70 and continues in Sutter County to SR 20 (PM 27.650). Land use in this segment is rural with agricultural operations and many small communities numbering under 5,000 in population.





Segments 1 and 2 Project List

Segment	Constrained/ Unconstrained	Project Name	Project Description	Mode	County	Route
1	Constrained	Managed Lanes from I-5/SR 99 Jct. to SR 99/SR 70 Jct	Construct Managed Lanes	Hwy	SAC, SUT	SR 99
1	Constrained	Widen Elkhorn Blvd & Interchange	Widen from Rio Linda Blvd through SR 99 to Lone Tree Rd	Hwy	SAC	SR 99
1	Unconstrained	Expand Elkhorn Park and Ride Lot	Expand & Redesigned to allow Transit Operations	Transit	SAC	SR 99
1	Constrained	Riego Road Widening	Widen Riego Rd from 2 lanes to 4 lanes.	Hwy	SUT	SR 99
1	Unconstrained	East Levee Rd	Construct Class I Bicycle Lane	Active	SAC	SR 99
1	Unconstrained	East Commerce Rd	Construct Class II Bicycle Lanes	Active	SAC	SR 99
1	Unconstrained	Sacramento Northern Bikeway Trail	Extend Class I trail from current terminus at Elverta Rd to Sutter County Line	Active	SAC	SR 99
1	Constrained	Construct Bicycle Facilities	Construct various bicycle facilities in the Metro Air Park Specific Plan Area	Active	SAC	SR 99
1	Unconstrained	Construct Sutter Pointe Park and Ride Lot	Construct new park and ride lot	Transit	SUT	SR 99
2	Unconstrained	Pedestrian Improvements on SR 20 from Harter to Feather River Bridge	Various improvements to enhance walkability in Yuba City	Active	SUT	SR 20
2	Unconstrained	Wilson Rd Intersection Improvements	Construct improvements to the SR 99-Wilson Rd intersection (Turnoff for Garden Hwy).	Hwy	SUT	SR 99

Segment	Constrained/ Unconstrained	Project Name	Project Description	Mode	County	Route
2	Unconstrained	Construct Placer Parkway/ Sankey Rd Interchange	Convert the existing intersection to a freeway interchange.	Hwy	SUT	SR 99
2	Unconstrained	Construct Catlett Rd Interchange	Convert the existing intersection to a freeway interchange.	Hwy	SUT	SR 99
2	Unconstrained	Construct Garden Hwy Interchange	Convert the existing intersection to a freeway interchange.	Hwy	SUT	SR 99
2	Unconstrained	Widen SR 99 to 6 lanes from SR 70 Jct to Barry	Widen the route from the existing four lane conventional highway to six lanes.	Hwy	SUT	SR 99
2	Unconstrained	Widen SR 99 to 6 lanes from Barry to SR 20	Widen the route from 4 to 6 lanes	Hwy	SUT	SR 99
2	Constrained	Construct Class II Bike Lane	Construct a Class II bicycle lane on SR 99 from Bogue Rd to SR 20	Active	SUT	SR 99
2	Unconstrained	Pedestrian Improvements on SR 20 from Harter to Feather River Bridge	Various improvements to enhance walkability in Yuba City	Active	SUT	SR 20
2	Unconstrained	Expand Bogue Rd Park and Ride Lot	Expand to create additional parking.	Transit	SUT	SR 99
2	Unconstrained	Oswald Rd Intersection Improvements	Construct improvements to the SR 99-Oswald Rd intersection.	Hwy	SUT	SR 99
2	Constrained	SR 99/20 Interchange	Convert the existing intersection to a freeway interchange.	Hwy	SUT	SR 99



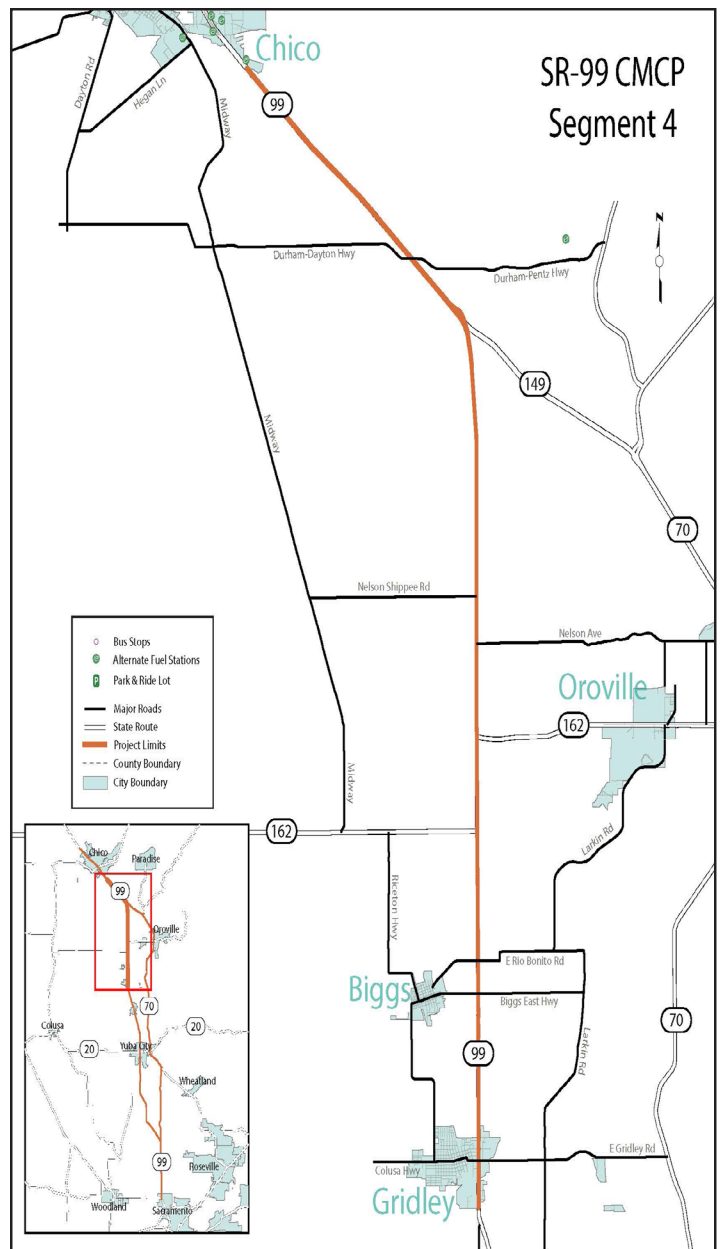
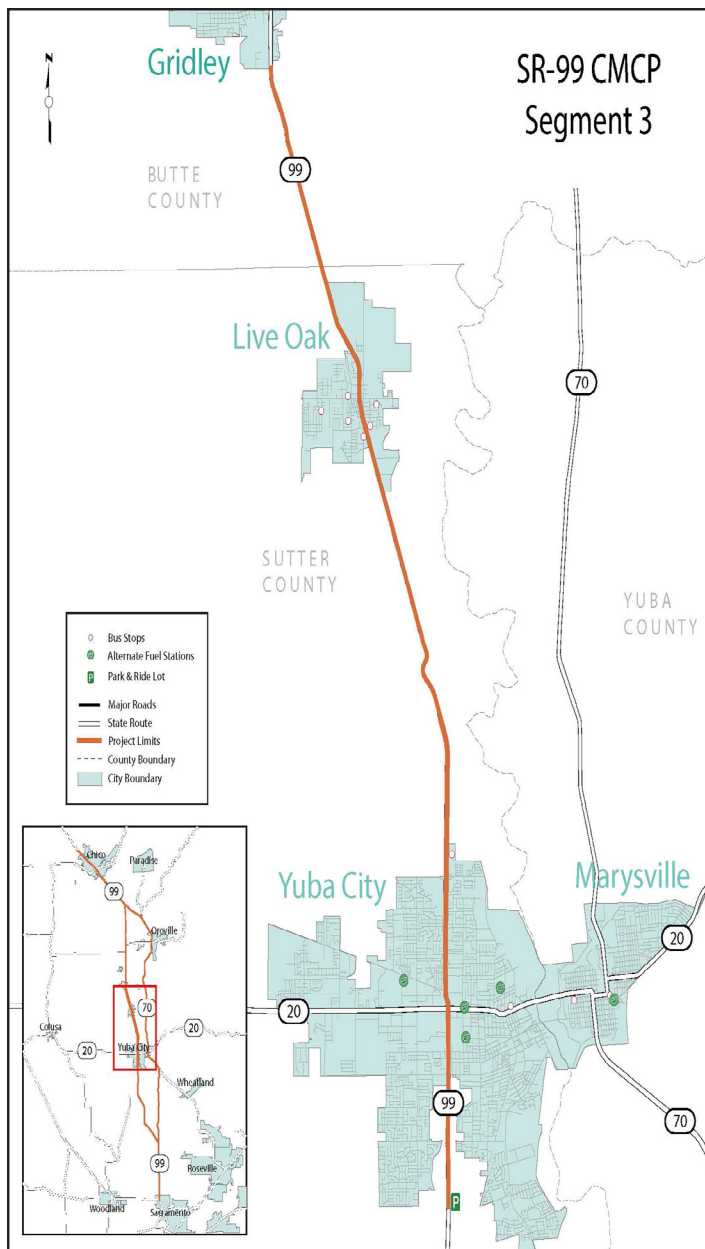
Segment	Constrained/ Unconstrained	Project Name	Project Description	Mode	County	Route
2	Constrained	SR 99 Widening 4 to 6 lanes between Bogue Rd and SR 20	Widen the route from 4 to 6 lanes	Hwy	SUT	SR 99
2	Unconstrained	SR 20 Widening 4 to 6 lanes from Tharp Rd to SR 99	Widen the route from 4 to 6 lanes	Hwy	SUT	SR 20
2	Unconstrained	Bicycle Facility parallel to Bridge St or a separated Bike Lane on SR 20	Build new bicycle and pedestrian paths to provide an active transportation route along SR 20.	Active	SUT	SR 20
2	Unconstrained	Landscaping Master Plans along SR 99 and SR 20 in City's Sphere of Influence	Landscape upgrades along SR 20 and SR 99 in Yuba City	Hwy	SUT	SR 99
2	Unconstrained	Construct Sutter Pointe Park and Ride Lot	Construct new park and ride lot	Transit	SUT	SR 99
2	Unconstrained	Construct Yuba City Transit Center at Alturas & Shasta Streets	Construct new transit center in Yuba City for Yuba Sutter Transit	Transit	SUT	SR 20
1,2	Unconstrained	Conversion of UPRR ROW to Bike/Ped Path including crossings at SR 20 and SR 99	Construct new bicycle and pedestrian path from former railroad right of way.	Active	SUT	SR 20, SR 99
1,2	Unconstrained	Bicycle Facilities parallel to SR 99 (Walton/Stabler, Clark)	Build new bicycle and pedestrian paths to provide an active transportation route along SR 99.	Active	SUT	SR 99

Segment 3: Sutter and Butte Counties

Segment 3 begins in Sutter County on SR 99 (PM 27.650) from its meeting with SR 20 to its crossing with W Liberty Road in Butte County on SR 99 (PM R3.130). Land use in this area is rural in nature with agricultural activities taking place and small communities numbering under 5,000 in population.

Segment 4 : Butte County

Segment 4 begins in Butte County on SR 99 (PM R3.130) where it meets with W Liberty Road and continues on SR 99 in Butte County until it meets Begin Freeway Southgate Avenue (PM 21.810). Land use in this area is rural in nature with agricultural activities before nearing the suburban outlining of the City of Chico.





Segments 3 and 4 Project List

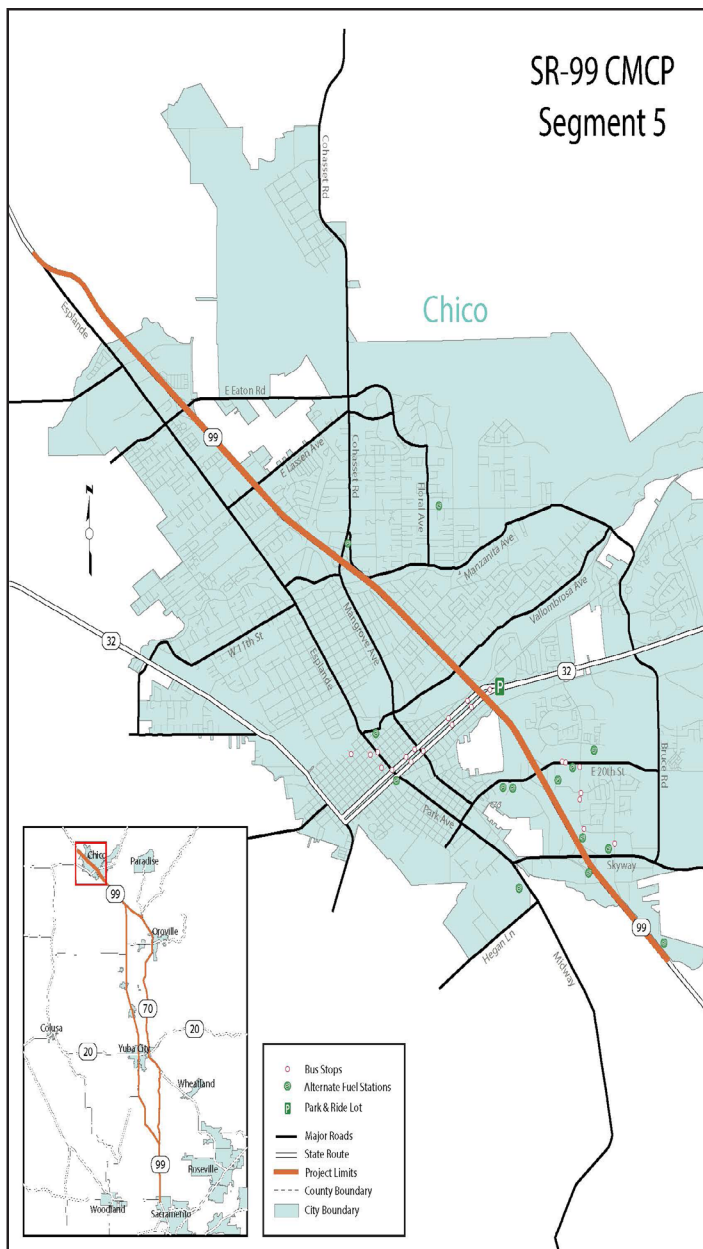
Segment	Constrained/ Unconstrained	Project Name	Project Description	Mode	County	Route
3	Constrained	SR 99/Pease Rd Interchange	Convert the existing intersection to a freeway interchange.	Hwy	SUT	SR 99
3	Unconstrained	Sound Walls on SR 99 from Jaime Dr to Pease Rd	Construct sound walls to reduce noise impacts	Hwy	SUT	SR 99
3	Unconstrained	SR 99 Widening 2 to 4 lanes between Sanders Rd and Bishop Ave	Widen the route from 2 to 4 lanes	Hwy	SUT	SR 99
3	Constrained	Construct Grade Separation at UPRR Lomo Crossing	In Sutter County on Route 99 at Lomo Crossing	Hwy	SUT	SR 99
3	Unconstrained	Safety Improvements at Live Oak Blvd (Restrict Access)	Restrict access from SR 99 next to Lomo Crossing	Hwy	SUT	SR 99
3	Unconstrained	Widen from 2 to 4 lanes from end of freeway south of Lomo Crossing to Sutter/Butte County Line	Widen the route from the existing two lane conventional highway to four lanes.	Hwy	SUT	SR 99
4	Constrained	East Gridley Road	Emergency corridor - Gridley to Hwy 70. Widen from 1 lane per direction to 2 lanes.	Hwy	BUT	SR 70
4	Unconstrained	Widen to 4 lanes from Ford Ave. to Ord Rd	Widen the route from 2 to 4 lanes.	Hwy	BUT	SR 99
4	Constrained	Reconstruct E. Biggs Rd Intersection for ADA Improvements	Construct auxiliary lanes at intersection	Hwy	BUT	SR 99

Segment	Constrained/ Unconstrained	Project Name	Project Description	Mode	County	Route
4	Constrained	Reconstruct Richvale Rd Intersection for ADA improvements	Construct auxiliary lanes at intersection	Hwy	BUT	SR 99
4	Unconstrained	Construct Passing Lane from Ord Ranch Rd to E. Biggs Rd	Construct Passing Lane from Ord Ranch Rd to E. Biggs Rd	Hwy	BUT	SR 99
4	Unconstrained	Construct Passing Lane from E. Biggs Rd to Richvale Rd	Construct Passing Lane from E. Biggs Rd To Richvale Rd	Hwy	BUT	SR 99
4	Unconstrained	Construct Passing Lane from Richvale Rd to SR 149	Construct Passing Lane from Richvale Rd to SR 149	Hwy	BUT	SR 99
4	Unconstrained	Construct Neal Rd Interchange	Convert the existing intersection to a freeway interchange.	Hwy	BUT	SR 99
4	Unconstrained	Widen to 6 lanes from SR 149 Jct to Southgate Ave.	Widen from conventional 4 lanes to 6 lane freeway.	Hwy	BUT	SR 99
4	Unconstrained	Construct Roundabouts at ramp junctions at Durham-Pentz Rd Interchange	Construct two roundabouts on both sides of the freeway entrances.	Hwy	BUT	SR 99
3,4	Unconstrained	4 lanes from Sutter/Butte County Line to W. Liberty Rd	Widen the route from 2 to 4 lanes	Hwy	BUT	SR 99
3,4	Unconstrained	Construct Left and Right Turn Channelization: Richvale Rd, Nelson Ave, Nelson Shippee Rd, Cottonwood Rd, Shippee Rd	Construct various left hand and right turns at various intersections along SR 99 in Butte County.	Hwy	BUT	SR 99



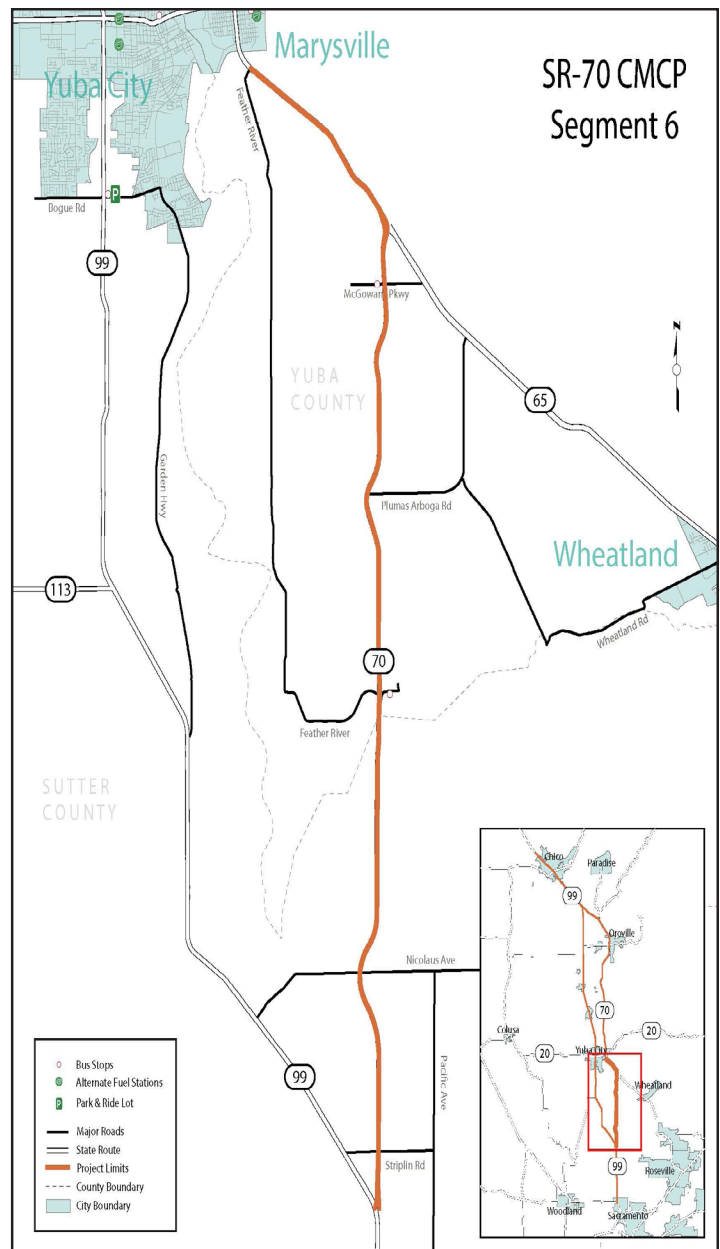
Segment 5 : Butte County

Segment 5 begins in Butte County on SR 99 (PM 29.370) at Begin Freeway Southgate Avenue and continues on SR 99 in Butte County until North End Esplanade (PM T38.373). The land use in this area is suburban in nature.



Segment 6 : Sutter-Yuba Counties

Segment 6 begins in Sutter County on SR 70 at the junction with SR 99 (PM R0.051) and continues into Yuba County on SR 70 until the South End Yuba River Bridge (PM 13.604). The land use in this area is rural in nature before transforming to suburban and urban near Yuba City.



Segments 5 and 6 Project List

Segment	Constrained/ Unconstrained	Project Name	Project Description	Mode	County	Route
5	Constrained	Northwest County Emergency Corridor	Emergency corridor/ bypass - Midway Road 0 Richvale to Durham. Wid- en from 1 lane per direction to 2 lanes	Hwy	BUT	SR 99
5	Constrained	Construct Southgate Rd Interchange (Close Estates access point and connect to Southgate)	Convert the existing intersection to a freeway interchange.	Hwy	BUT	SR 99
5	Uncon- strained	Install Ramp Meters: East First Ave, Cohasset, East Ave, Eaton Rd	Construct ramp meters at the loca- tions listed	Hwy	BUT	SR 99
5	Constrained	Chico - Paradise Bikeway Project	Construct new combina- tion Class 1 & 2 paths.	Active	BUT	SR 99
5	Constrained	Chico Park & Ride Expansion	New multi-story park and ride at SR 32/99 with charging stations	Transit	BUT	SR 99
5	Uncon- strained	Lindo Channel Bike Path/Trail	Construct either a Class I or Class IV bicycle/pe- destrian path along Lindo Channel	Active	BUT	SR 99
5	Uncon- strained	Class I Bike Path Exten- sion	Extend the current class I bicycle path along Hagen to University Park	Active	BUT	SR 99
5	Constrained	Construct Auxiliary Lanes be- tween Skyway and Cohasset Interchanges	Construct additional auxiliary lanes on SR 99 in Chico in each direction.	Hwy	BUT	SR 99



Segment	Constrained/ Unconstrained	Project Name	Project Description	Mode	County	Route
5	Unconstrained	Widen Skyway Interchange	Widen the Skyway interchange	Hwy	BUT	SR 99
5	Constrained	Widen Eaton Rd Interchange	Widen the Eaton interchange	Hwy	BUT	SR 99
5	Unconstrained	Construct Garner Lane Interchange	Convert the existing intersection to a freeway interchange.	Hwy	BUT	SR 99
6	Unconstrained	Construct Striplin Rd Interchange	Convert the existing intersection to a freeway interchange.	Hwy	SUT	SR 70
6	Unconstrained	Construct Berry/Kemp-ton Rd Interchange	Convert the existing intersection to a freeway interchange.	Hwy	SUT	SR 70
6	Constrained	Yuba 70 Connector ramp meter (EB) at NB SR 65	Construct connector ramp meter	Hwy	YUB	SR 70
6	Constrained	Yuba 70 ramp meter at Erle Road (WB)	Construct connector ramp meter	Hwy	YUB	SR 70
6	Constrained	Yuba 70 ramp meter at Feather River Blvd (EB)	Construct connector ramp meter	Hwy	YUB	SR 70
6	Constrained	Yuba 70 ramp meter at Feather River Blvd (WB)	Construct connector ramp meter	Hwy	YUB	SR 70
6	Constrained	Yuba 70 ramp meter at Lindhurst Ave (EB)	Construct connector ramp meter	Hwy	YUB	SR 70
6	Constrained	Yuba 70 ramp meter at McGowan Road (EB)	Construct connector ramp meter	Hwy	YUB	SR 70
6	Constrained	Yuba 70 ramp meter at McGowan Road (WB)	Construct connector ramp meter	Hwy	YUB	SR 70

Segment	Constrained/ Unconstrained	Project Name	Project Description	Mode	County	Route
6	Constrained	Yuba 70 ramp meter at Ol- ivehurst Ave (EB)	Construct connector ramp meter	Hwy	YUB	SR 70
6	Constrained	Yuba 70 ramp meter at Ol- ivehurst Ave (WB)	Construct connector ramp meter	Hwy	YUB	SR 70
6	Constrained	SR 70 Diag- onal Ramp Meter at the SR 70/Plumas Lake Road interchange (WB)	Construct connector ramp meter	Hwy	YUB	SR 70
6	Constrained	Construct Transit Bus Facility Project	Construct new transit bus facilitiy	Transit	SUT, YUB	SR 70, 99

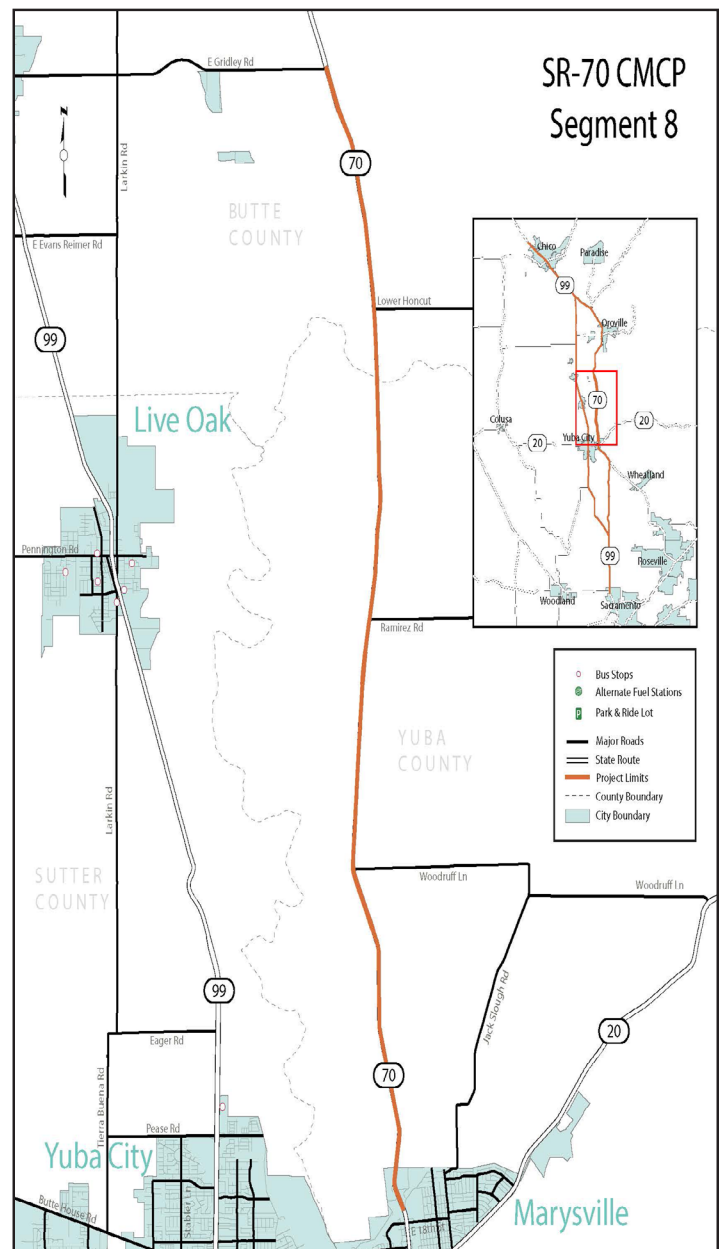
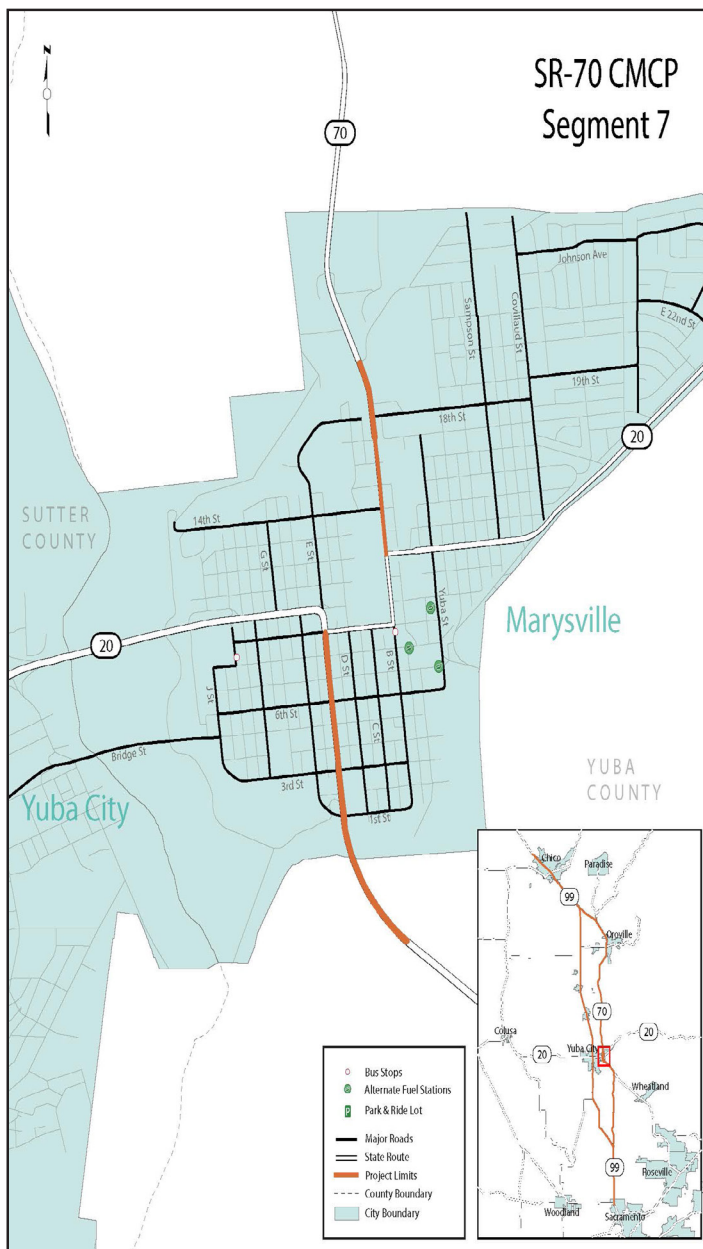


Segment 7 : Yuba County

Segment 7 begins in Yuba County on SR 70 at South End Yuba River Bridge (PM 13.604) and continues on SR 70 to its meeting with 24th Street in Marysville (PM 15.350). The land use in this area is urban in design; coursing through the downtown core of Marysville.

Segment 8 : Yuba and Butte Counties

Segment 8 begins in Yuba County on SR 70 at 24th Street (PM 15.350) and continues on SR 70 into Butte County where it crosses with East Gridley Road (PM 4.060). The land use in this segment departs the urban environment of Marysville and transforms into a rural landscape with agricultural activities.



Segments 7 and 8 Project List

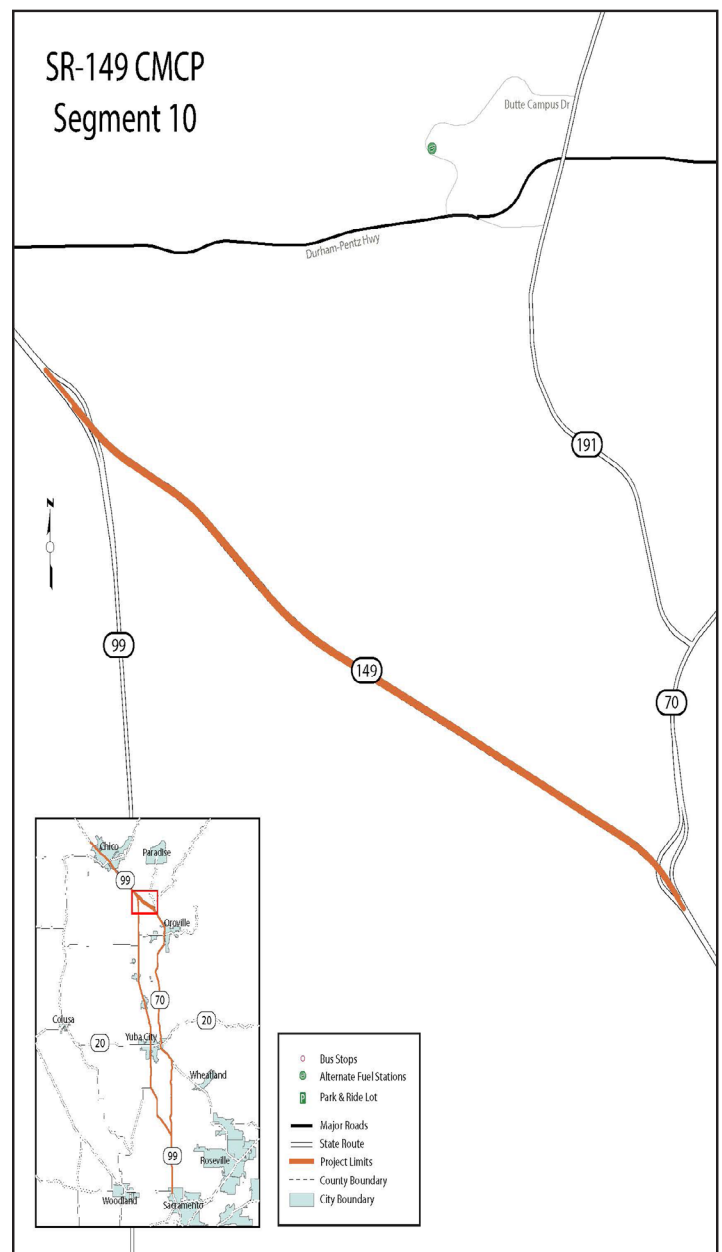
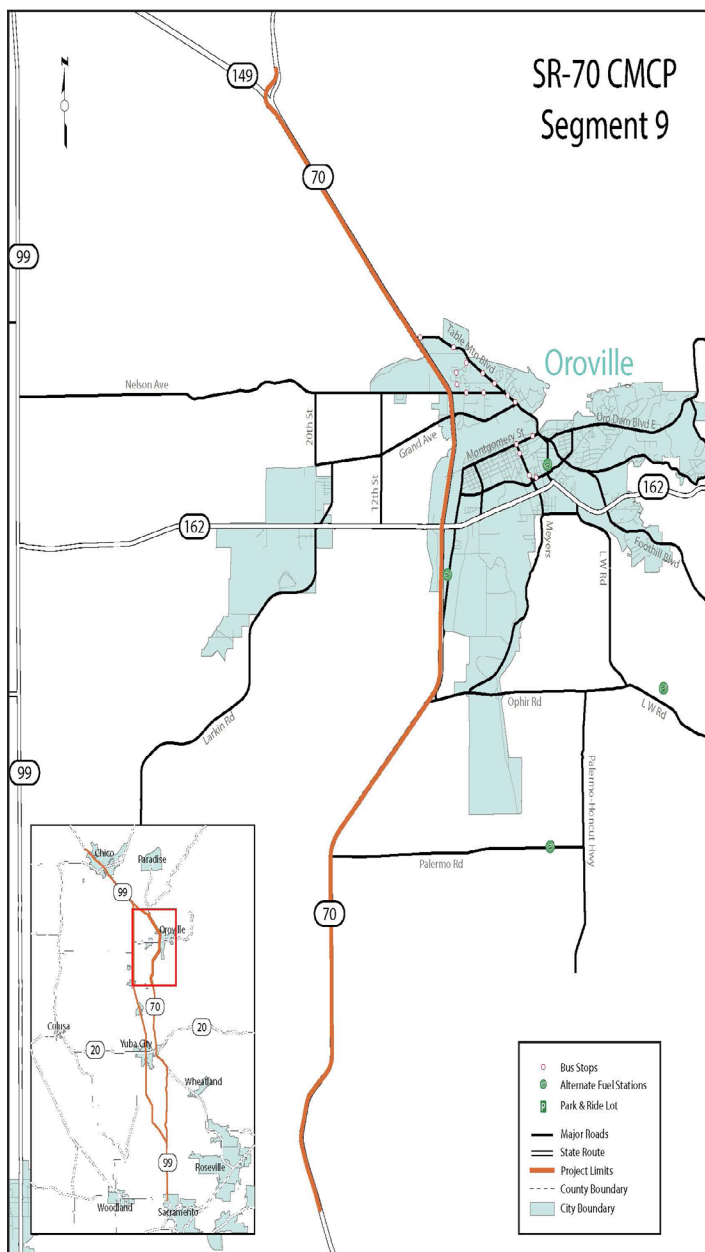
Segment	Constrained/ Unconstrained	Project Name	Project Description	Mode	County	Route
7	Constrained	Yuba 70 ramp meter at North Beale Rd (EB)	Construct connector ramp meter	Hwy	YUB	SR 70
7	Constrained	SR 70 Diag- onal Ramp Meter at the SR 70/North Beale Road interchange (EB)	Construct connector ramp meter	Hwy	YUB	SR 70
7	Uncon- strained	Adaptive Sig- nal System	Construct and program an adaptive signal system on SR 70 throughout Marysville.	Hwy	YUB	SR 70
7	Constrained	Reconstruct 3 UPRR un- dercrossings to standard clearance and 4 highway travel lanes, provide pe- destrian facil- ities (F, D, R, P, B) 03-0H160	Reconstruct 3 railroad crossings in Marysville at the UPRR Bin- ney Junction over SR 70.	Hwy	YUB	SR 70
8	Constrained	East County Emergency Corridor	Emergency corrdior - Hwy 70 to Four corners at the town of Bangor. Widen from 1 lane per direction to 2 lanes	Hwy	BUT	SR 70

Segment 9 : Butte County

Segment 9 begins in Butte County on SR 70 at East Gridley Road (PM 4.060) and continues in Butte County on SR 70 to the junction with SR 149 (PM R20.970). The land use in this segment is mostly rural with some agricultural use and near suburban environments due to its close proximity to Oroville.

Segment 10: Butte County

Segment 10 begins in Butte County on SR 149 at the junction with SR 70 (PM R.0.00) and continues on SR 149 in Butte County to its junction with SR 99 (PM R5.302). The land use in this segment is rural in nature.



Segments 9, 10 and All Project List

Segment	Constrained/ Unconstrained	Project Name	Project Description	Mode	County	Route
9	Constrained	East County Emergency Corridor	Emergency corrdior - Hwy 70 to Hwy 162 at Kelly Ridge Road. Widen from 1 lane per direction to 2 lanes	Hwy	BUT	SR 70
9	Constrained	Oroville Park & Ride Lot	Construct a park and ride lot at the his- toric Oroville Rail Depot	Transit	BUT	SR 70
All	Constrained	New Com- mute Oper- ation from Butte County to Live Oak/ Yuba City/ Sacramento	New transit services in conjunction with B-Line in Butte County	Transit	BUT, SAC, SUT	SR 99
All	Constrained	Chico to Sacramento Commuter Transit Service	Commer transit from Chico to Sac- ramento with 4 round trips on Electric or hybrid com- muter buses. Purchase 4 buses, charge stations and 5 year pilot for operating needs.	Transit	BUT, SAC, SUT, YUB	SR 70, 99, 149
All	Uncon- strained	Extend San Joaquin Rail Service from Sacramen- to to Butte County	Extend the Amtrak California San Joaquin intercity rail service from its existing terminus of Sacramento into Butte County.	Transit	BUT, SAC, SUT, YUB	SR 70, 99, 149