

Housekeeping Items



ATTENDEES WILL BE IN
LISTEN-ONLY MODE
DURING THE
PRESENTATION



DURING THE Q & A,
PLEASE FEEL FREE TO
ASK INFORMAL
QUESTIONS IN THE CHAT
SECTION.



NOTE THAT THE CHAT IS
NOT CONSIDERED A
FORMAL PUBLIC
RESPONSE. PLEASE
COMPLETE THE
PROJECT ONLINE
SURVEY, SEND AN
EMAIL, OR SEND A
LETTER WITH YOUR
COMMENTS.



THIS PRESENTATION WILL
BE RECORDED AND
SHARED ON THE
PROJECT WEB PAGE,
FACEBOOK, AND
YOUTUBE.

Gualala Downtown Streetscape Enhancement Project

Virtual Public Informational Meeting

January 14, 2021

5:00 PM – 7:00 PM

Title VI Statement

Caltrans ensures that no person in the state of California is excluded from participation in, denied the benefits of, or otherwise subjected to discrimination in Caltrans programs, policies, procedures, activities, and services on the grounds of race, color, national origin, sex, age, or disability.

Introductions

- Mendocino County 5th District Supervisor, Ted Williams
- MCOG Executive Director, Nephele Barrett
- Elias Karam, Caltrans Design Senior
- Jony Tji, Caltrans Project Engineer
- Liza Walker, Caltrans Senior Environmental Planner
- Scott Burger, Caltrans Environmental Coordinator
- Phlora Barbash, Caltrans Landscape Associate
- Andrew Goetz, Caltrans Public Information Officer
- Bonnie Kuhn, Caltrans Public Information Officer

Presentation Overview

- Purpose and Need
- Project Funding
- Project History and Previous Alternatives
- Previous Public Comments
- Gualala Town Plan
- New Project Alternatives
 - Project Alternative 4A
 - Project Alternative 4B
- Address comments, concerns and questions





Project Description

Project Purpose and Need

- Create safe and comfortable facilities for pedestrian and bicycle travel and improve traffic flow.
- Reduce conflicts between motorized and non-motorized users
- Improve visual character by incorporating landscape and hardscape features



Project Location



Project Funding

- The total project cost estimate will be determined after a preferred alternative is selected.
- To date, MCOG has programmed \$1.82 million for project development.
- Active Transportation Program grant is currently being pursued.

Project Schedule

- Project Approval & Environmental Document - July 2021
- Plans, Specifications & Estimate - February 2023
- Right of Way Certification – February 2025
- Contract Advertisement – March 2025
- Begin Construction – September 2025

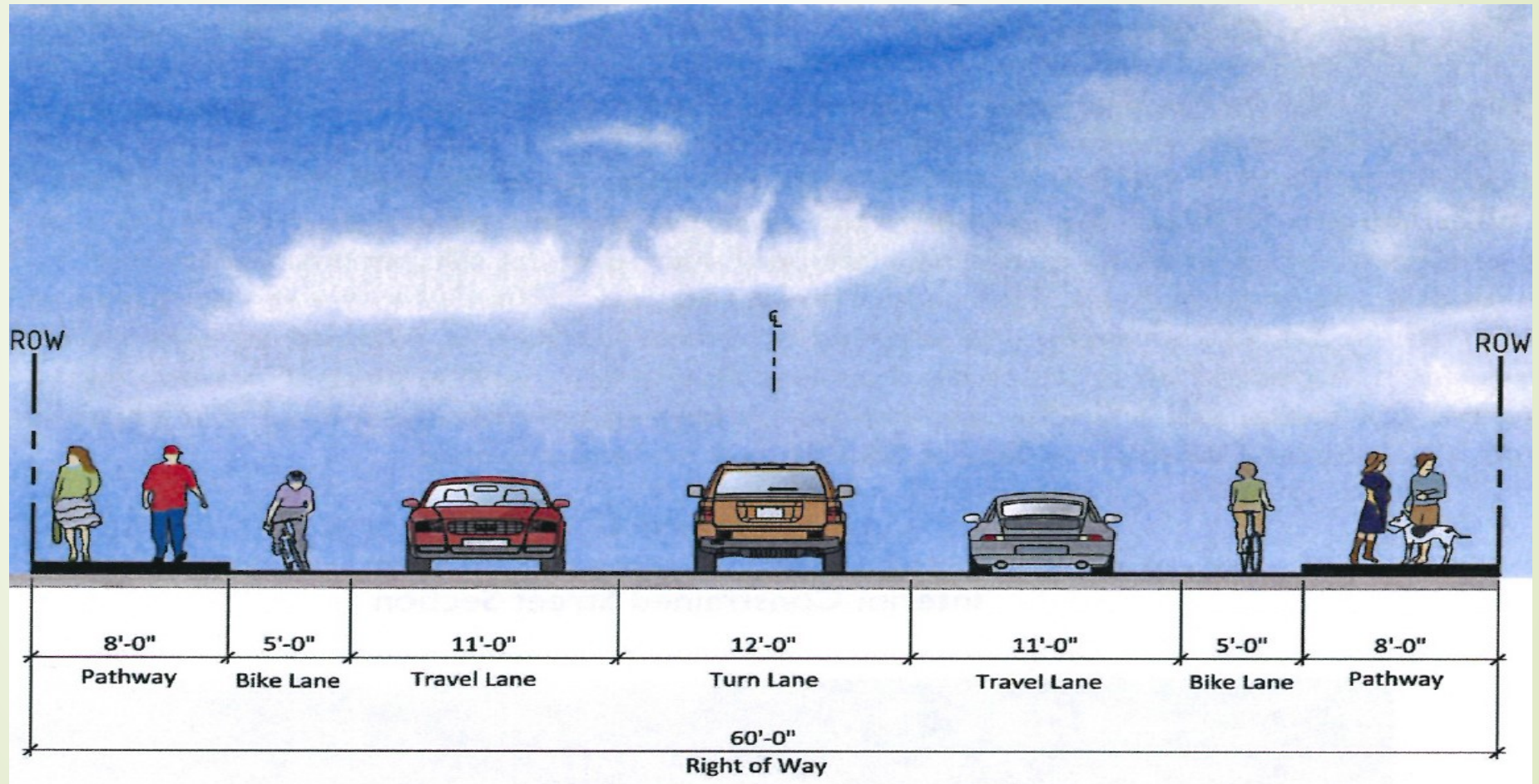
Project History

Project History

- Adoption of Gualala Town Plan (2002)
- MCOG's involvement started 2005 – Caltrans community planning grant
- Gualala Community Action Plan (RRM Design Group, 2007)
- Gualala Downtown Design Plan (RRM Design Group, 2009)
- RRM Design Group Downtown Gualala Preliminary Project Study Report (2012)
- Caltrans Project Study Report-Project Development Support January 2014
- Funding available in the 2014 State Transportation Improvement Program (STIP)
- Environmental phase began October 2016 with \$340,000 programmed by MCOG.

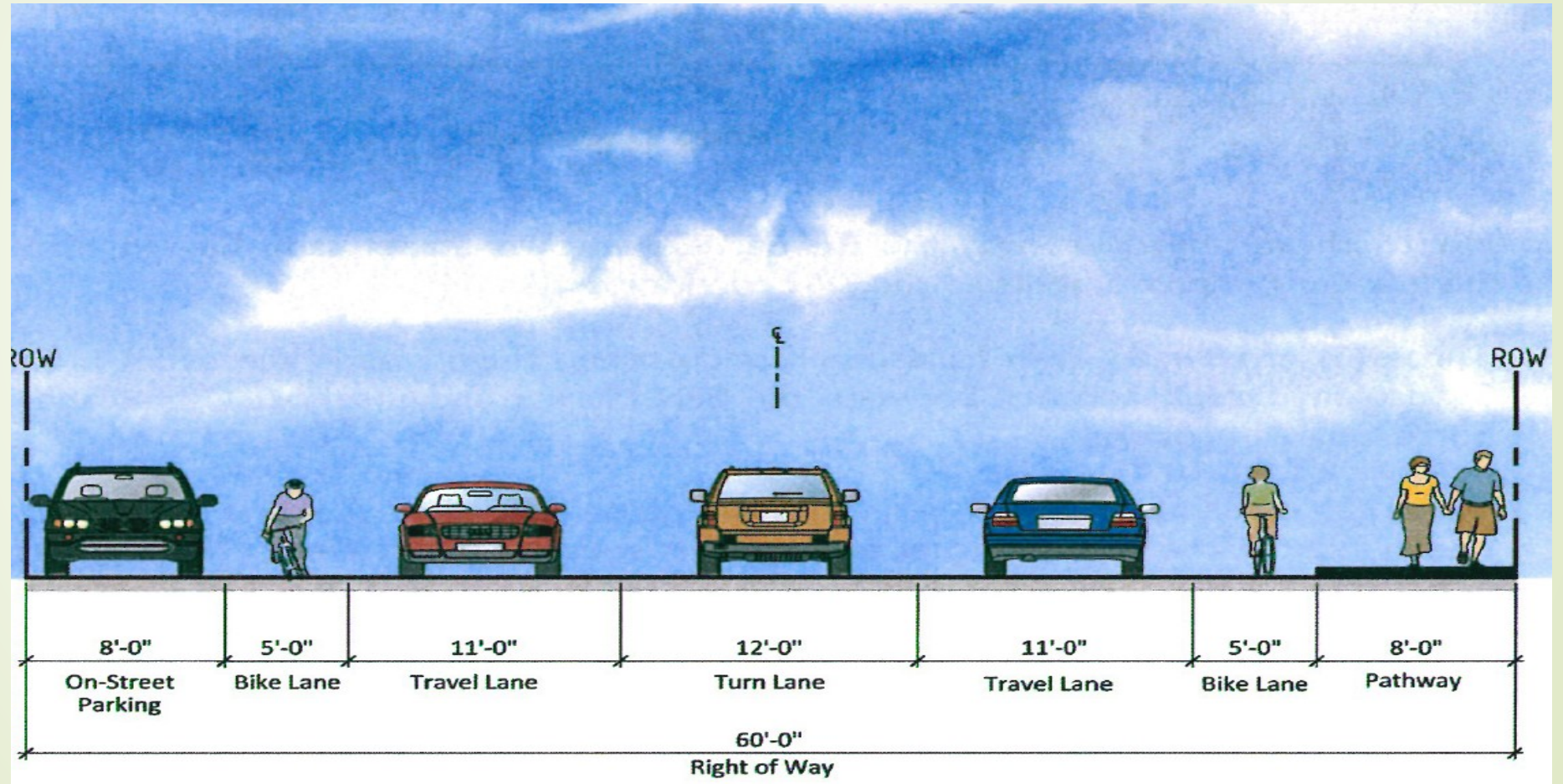
Project Alternatives

RRM Final Report (2012)
Permanent Constrained Typical Section



Project Alternatives

RRM Final Report (2012)
Interim Constrained Plan

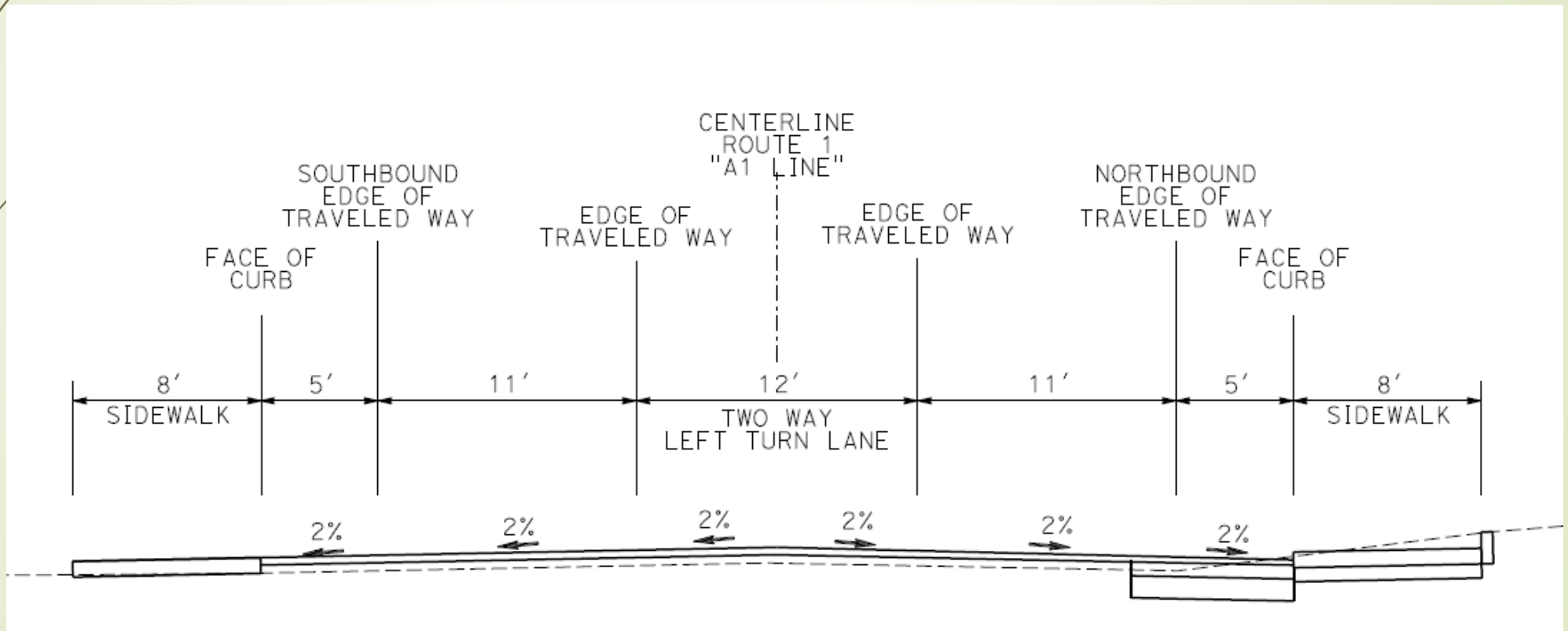


Project History

- Draft Environmental Document (DED) July 2019
 - Proposed two alternatives
 - Eliminate parking on State Route 1, widen and modify the traffic lane designations and incorporate design features
 - Begin circulation for public comment on July 8, 2019.
 - Public meeting held July 25, 2019 to present the two alternatives.
- Comments received during the DED Circulation period included opposing views on the need for:
 - On-street parking
 - A two-way continuous left turn lane
 - Bike lanes
 - Landscaping
- Additional comments received from the community following the close of the DED circulation period focused on observing the Town Plan, eliminating on-street parking, reconsidering the Interim Constrained Plan and abandoning the project altogether

Caltrans Draft Project Report (2019)

Alternative 1 & 2 Refined Streetscape Design Plan
(Alternative 2 is shifted east of Alternative 1)



Project History

- Gualala “Working Group” Meetings - September 24-25, 2019
 - Develop a project alternative that the community would support. (Alternative 3)
- October 1, 2019 Public Meeting to present recommendations from Gualala Working Group to the Gualala Community
- MCOG presentation to MCOG Board of Directors- October 7, 2019
- Spring 2020 to Present – Following preliminary design proposing retaining walls
 - Community feedback
 - Letters, emails and petitions opposing the alternative developed by the Gualala “Working Group.”
 - Development of project alternative that would be presented to the community.

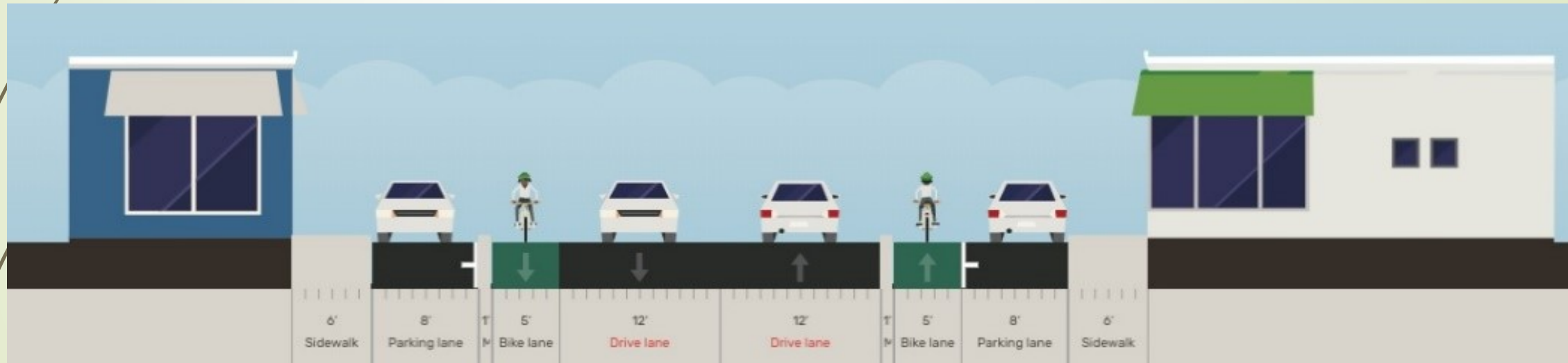
Gualala Working Group Alternative 3 (Fall 2019)



Gualala Working Group Alternative 3 (Fall 2019)



Gualala Working Group Alternative 3 (Fall 2019)



Previous Public Comments

Gualala Informational Open House Survey

January 16, 2018

Which project alternative do you prefer?

Alt 1 - No street parking	25
Alt 2 - Some street parking	1
Neutral	1
Opposed to project	5

If planters are included in the project, there would be some maintenance required. Would you be interested in volunteering to help maintain any proposed planters?

Yes	9
No	18
Maybe	12

Which sidewalk option do you prefer?

Option 1: 8' sidewalk - no vegetation	8
Option 2: 6' sidewalk - with veg strip	4
Option 3: 6' meandering sidewalk - with veg	23

Would you want to see bollard lighting along the sidewalk in Downtown Gualala?

Yes	14
No	7
Neutral	15

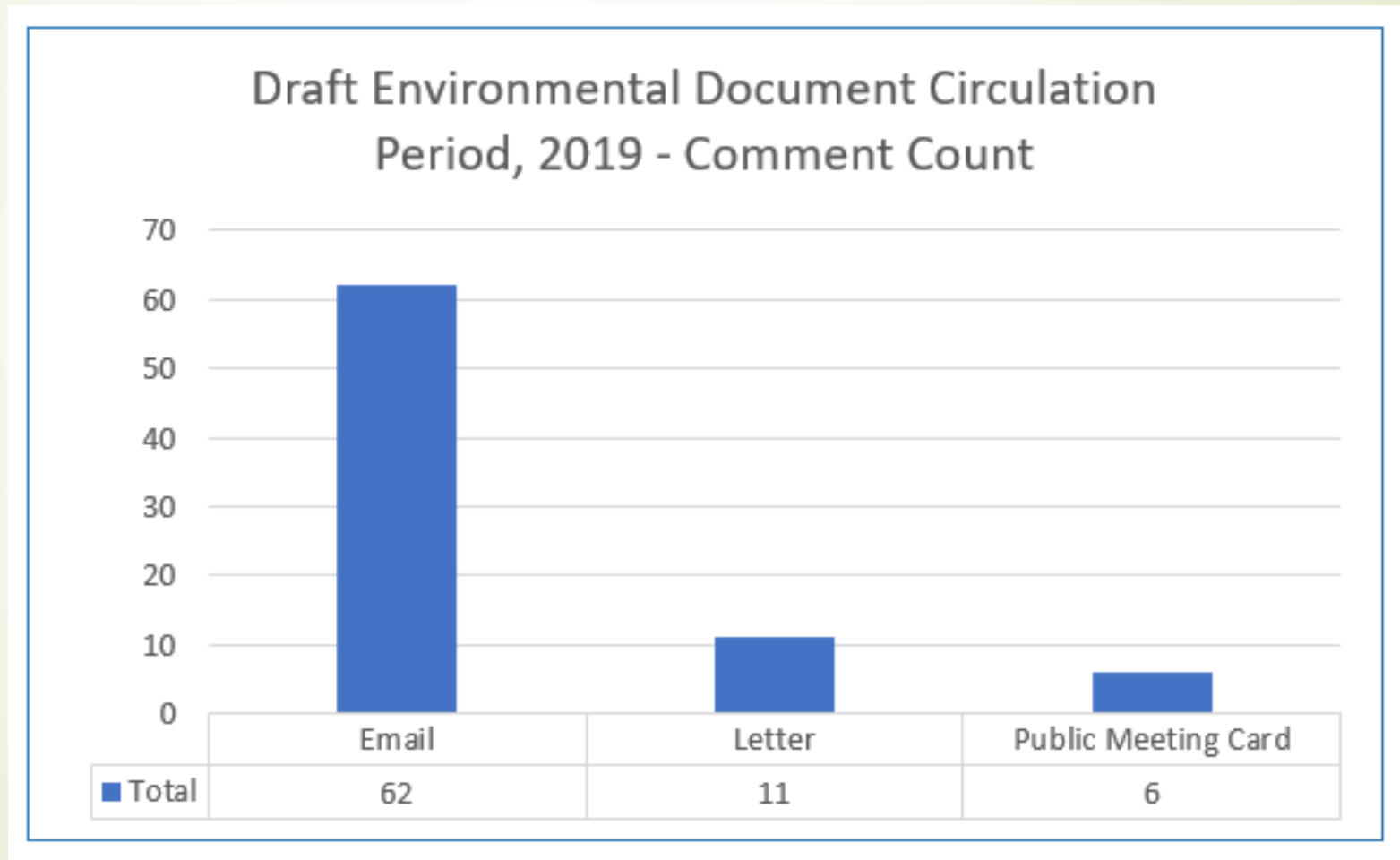
Gualala Informational Open House Survey

January 16, 2018

**What do you like and/or dislike about the current plan proposal?
Which project alternative do you prefer?**



Draft Environmental Document Comments July 2019



Draft Environmental Document Comments July 2019

Community Preference Count Based on Comments

Preference	Count
Alternative 1	3
Alternative 2	15
"No Build" Alternative	33
Retain On-Street Parking	35
Against On-Street Parking	3



October 1, 2019 Public Information Meeting Comments

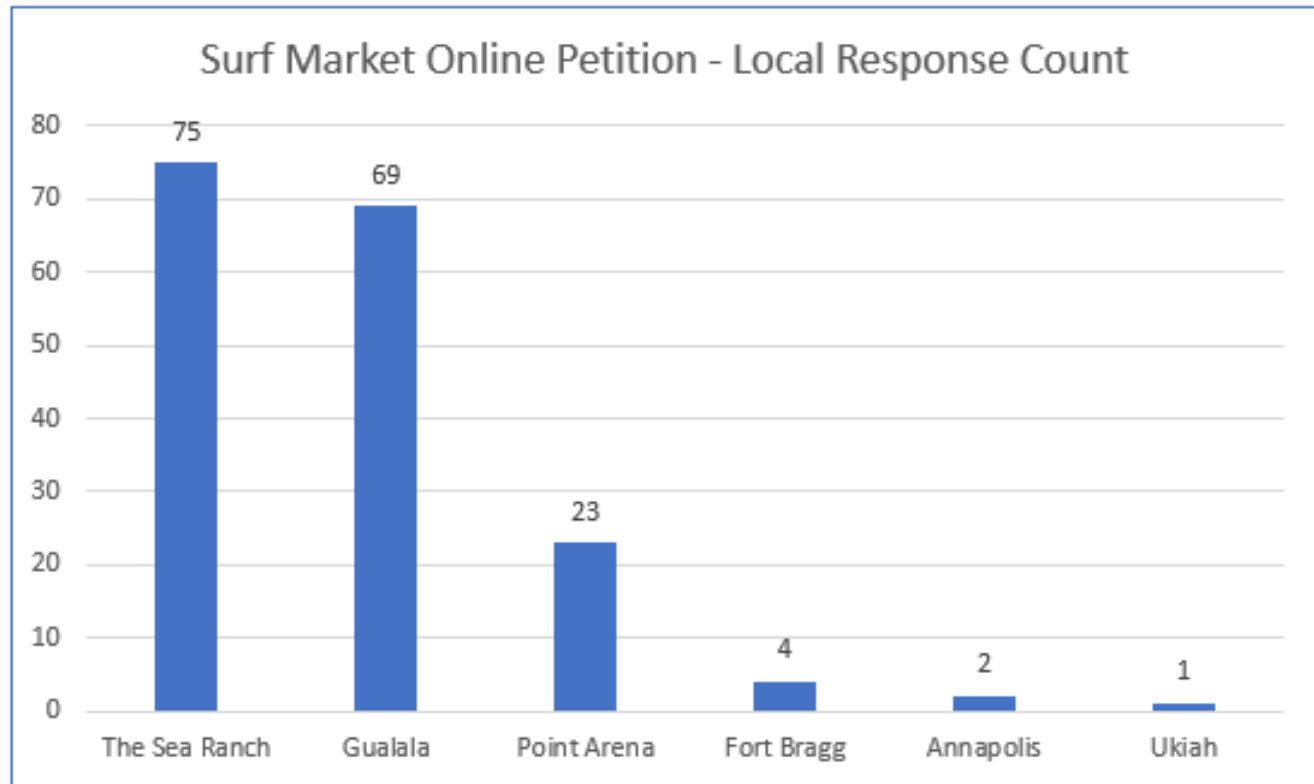
- Safety
 - **Flashing radar feedback sign and Yellow “congested area” sign**
 - I support a 64-foot streetscape plan (1-A). **Six-foot sidewalks are important and safer than 5-foot.**
- Parking
 - **RV’s, trailers, and other long vehicles**
- Compromise
 - In support of **compromise plan** to remove on-street parking on the east side.



Surveys & Petitions

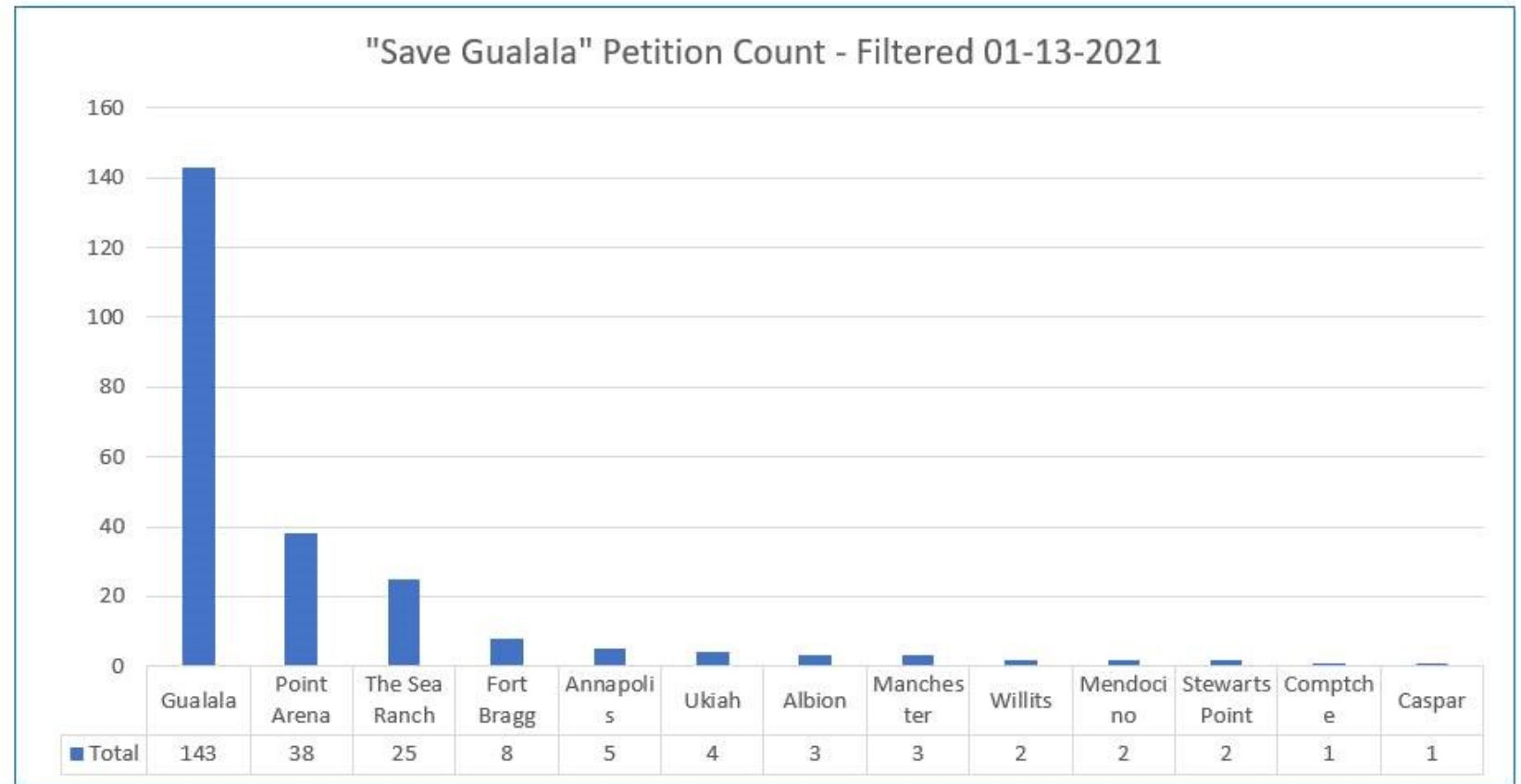
Surf Market Online Petition – Local Count

	Sum of Count
The Sea Ranch	75
Gualala	69
Point Arena	23
Fort Bragg	4
Annapolis	2
Ukiah	1
Grand Total	174



"Save Gualala" Online Petition

Count of Name	Total
Gualala	143
Point Arena	38
The Sea Ranch	25
Fort Bragg	8
Annapolis	5
Ukiah	4
Albion	3
Manchester	3
Willits	2
Mendocino	2
Stewarts Point	2
Comptche	1
Caspar	1
Grand Total	237



Online Survey Conducted by 5th District Supervisor, Ted Williams

- “Where do you live?”
 - Gualala 44
 - South Coast 10
 - Sonoma County 5
- Are you informed about the Gualala Downtown Streetscape Enhancement project?”
 - Yes 57
 - No 7
- “Do you support the general concept of a Gualala Downtown Streetscape Enhancement, specific details aside?”
 - Support 56
 - Opposed 7

Gualala Town Plan

Gualala Town Plan

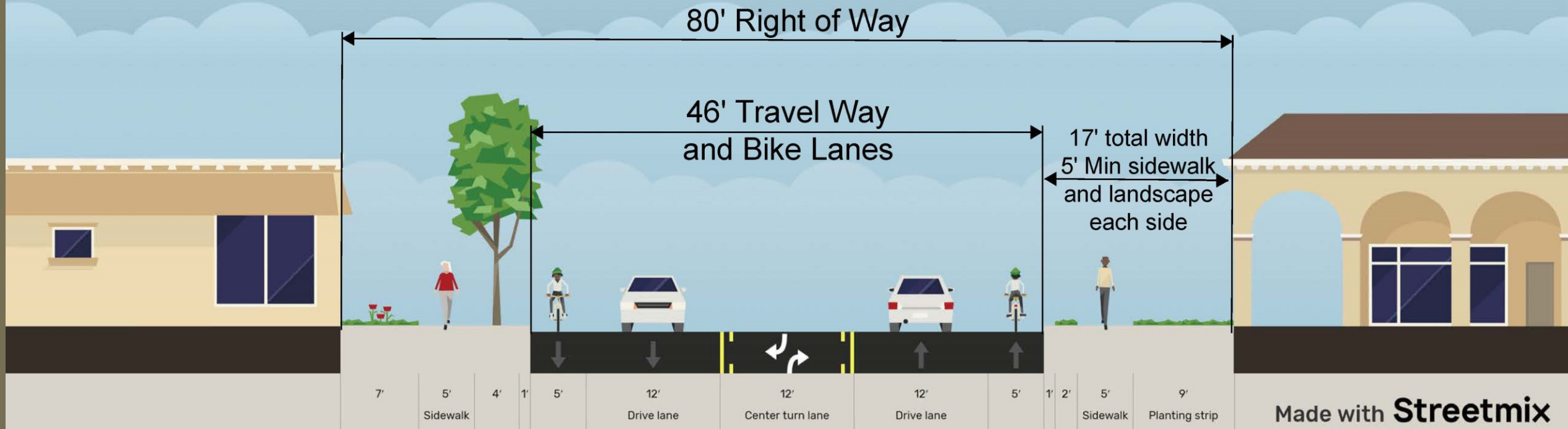
- Recommended improvements necessary to accommodate increased traffic volumes from projected buildout under the Gualala Town Plan, include:
 - Two-way left-turn lane on Highway One from Old State Highway to Bakertown.
 - Development of parallel roadway east of Highway One (along Church Street alignment), with a bridge over China Gulch.
 - Installation of traffic signals on Highway 1 at Old State Highway, Sundstrom Mall and Ocean Drive.
 - Left-turn channelization on Highway 1 at Old State Highway, Center Street, Sundstrom Mall, Ocean Drive and Pacific Woods Road.
 - Northbound right-turn channelization on Highway 1 at Old State Highway.
- At a public meeting to discuss the findings of the Gualala Traffic Study and at subsequent Gualala Municipal Advisory Council meetings, the general consensus was that traffic signals are undesirable, but may eventually be necessary to address public safety concerns

Gualala Town Plan

- **G3.6-12:** No on-street parking shall be permitted on Highway 1. County staff shall coordinate with Caltrans to develop appropriate signage.
- **G3.6-14:** A continuous pedestrian walkway shall be provided on the east side of Highway 1, from Old State Highway to the Gualala Mobile Court and on the west side of Highway 1 from Old State Highway to Robinson Reef Road.
- **G3.6-17:** Pedestrian crosswalks shall be provided at the following locations on Highway 1: Sundstrom Center entry, Seacliff, Ocean Drive and Center Street
- **G3.6-4:** The Highway 1 streetscape cross-section in the Gualala Village Mixed Use and Gualala Highway Mixed Use Districts include specific elements within a minimum 80' right-of-way

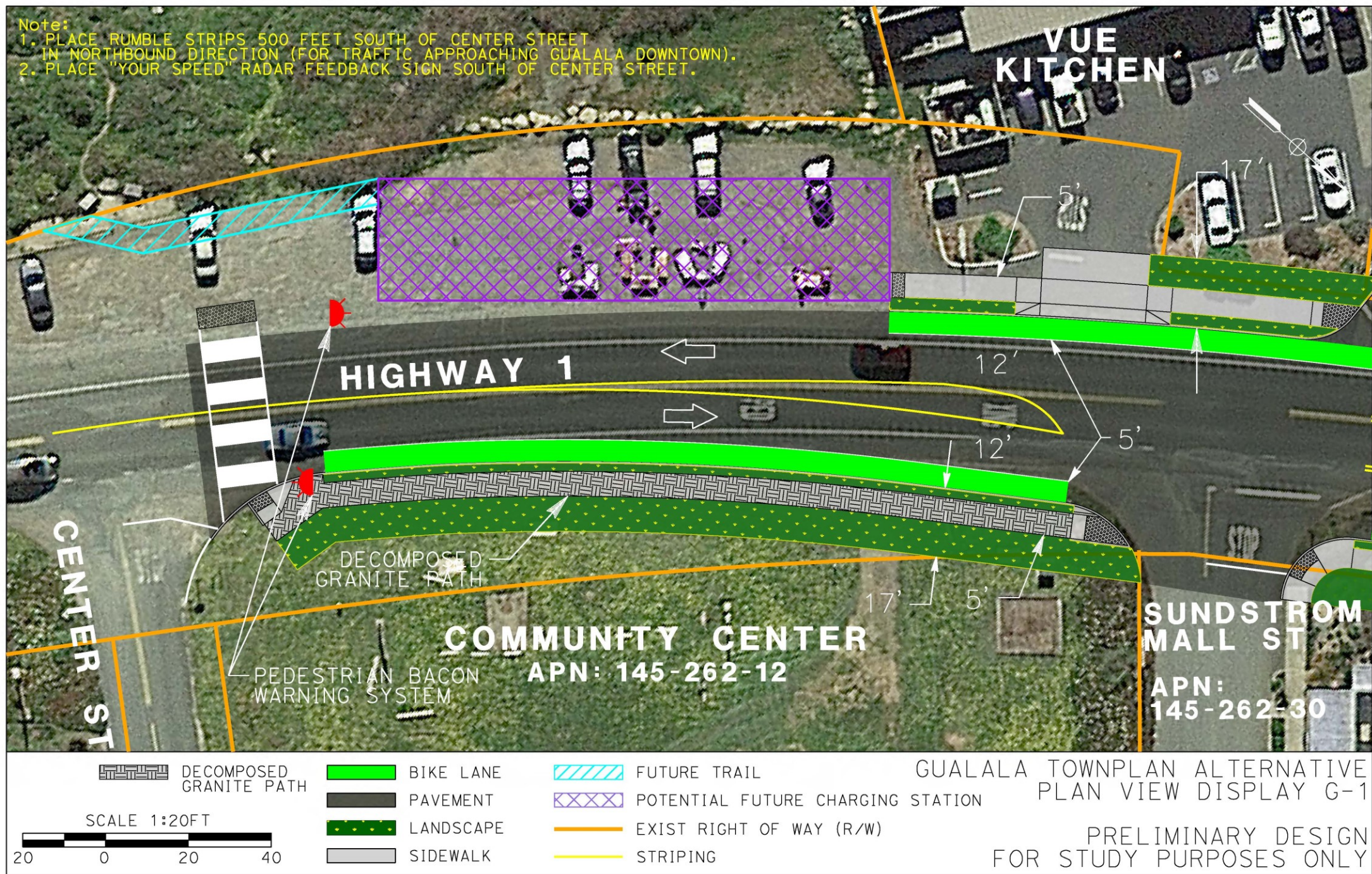
Gualala Town Plan Alternative

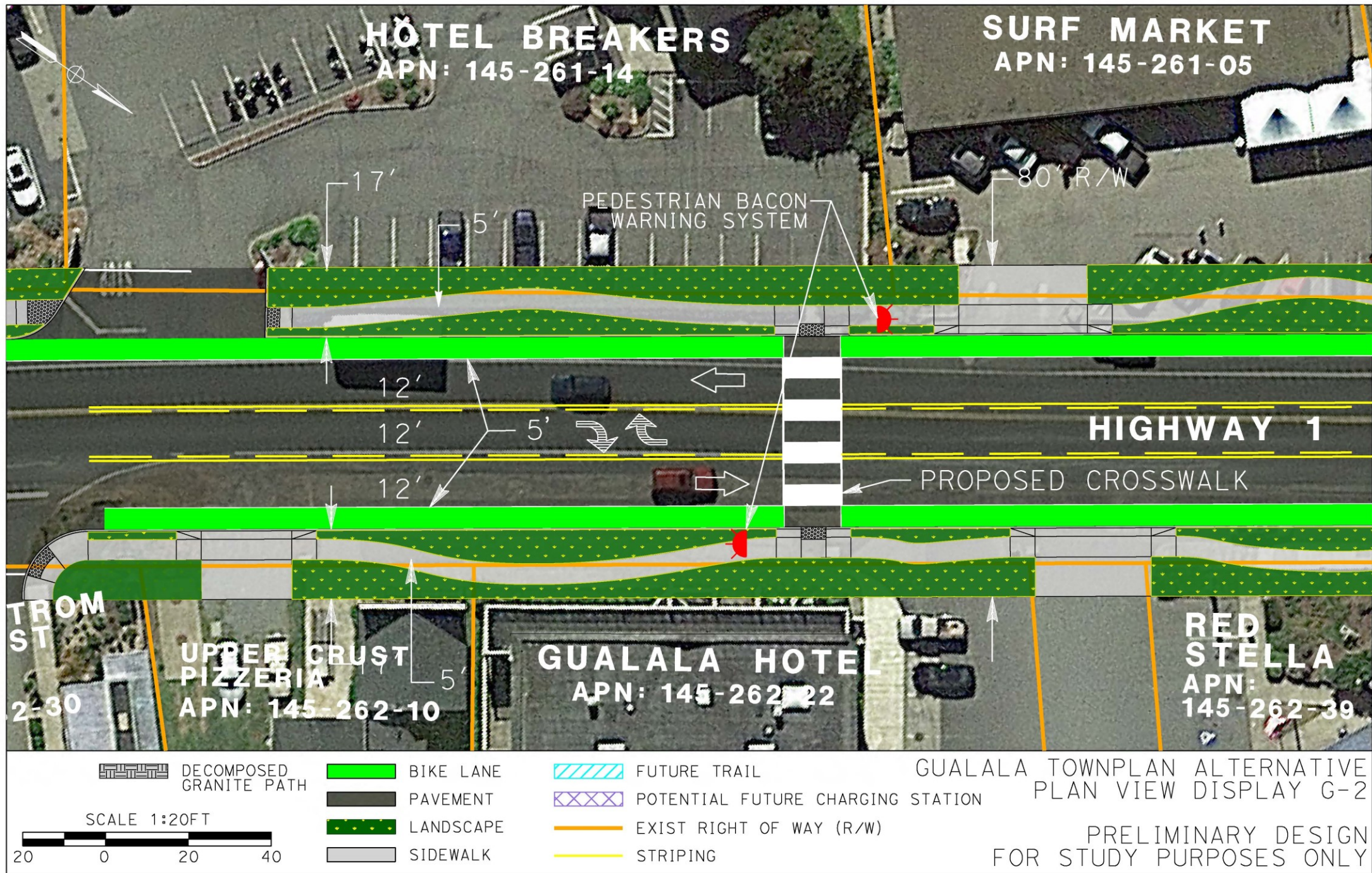
GUALALA TOWN PLAN ALTERNATIVE

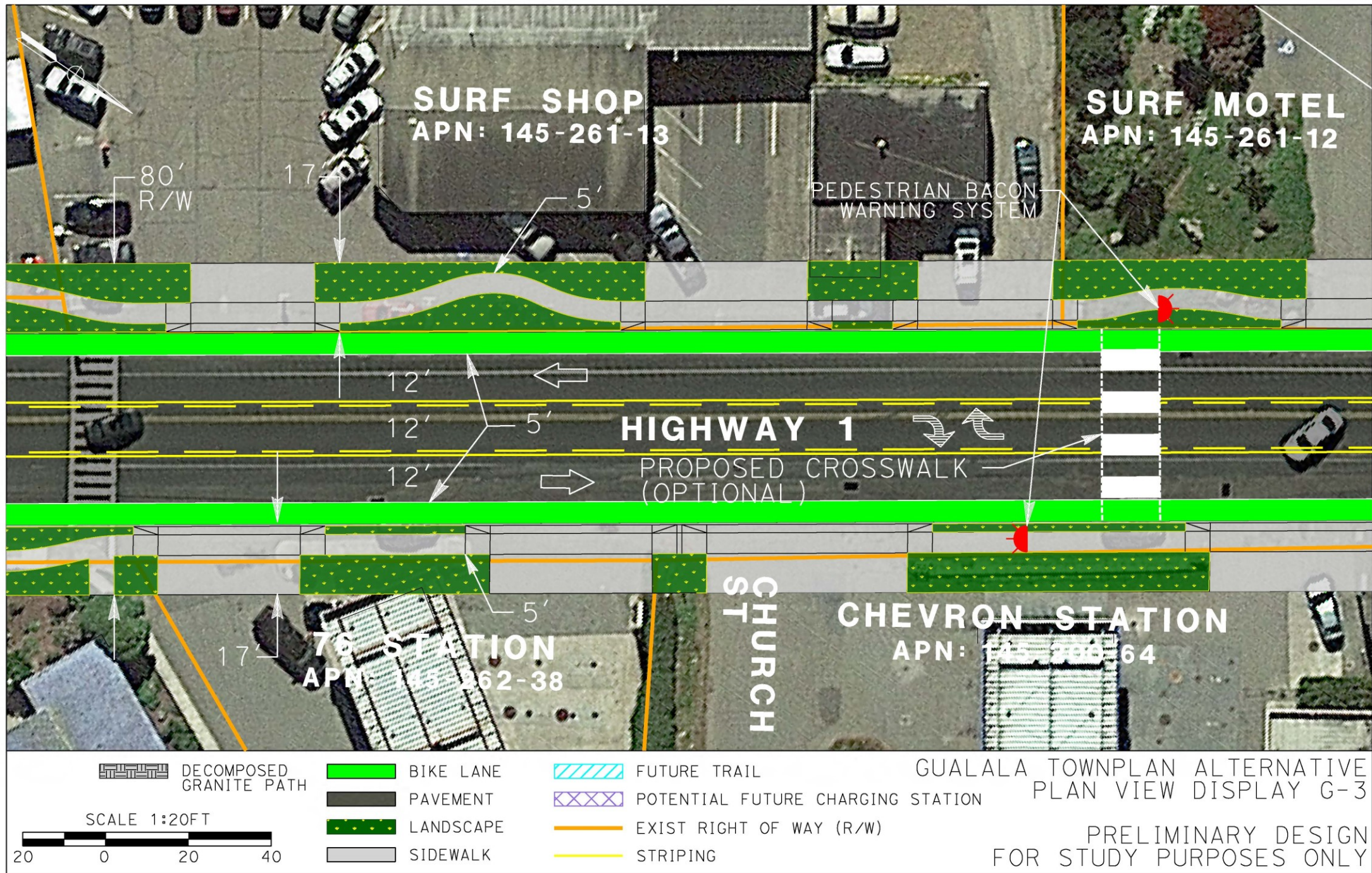


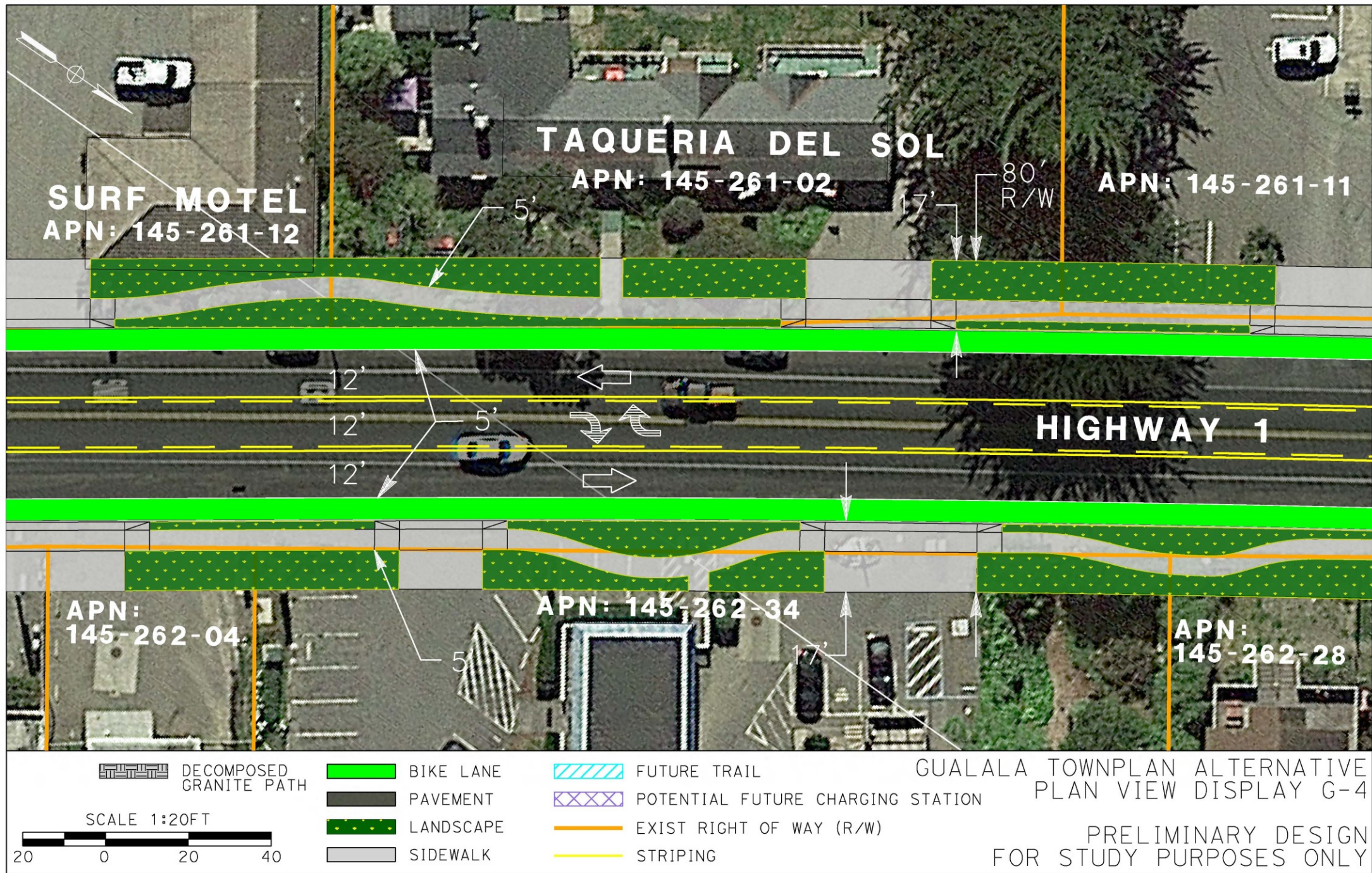
Made with **Streetmix**

- Note:
1. PLACE RUMBLE STRIPS 500 FEET SOUTH OF CENTER STREET IN NORTHBOUND DIRECTION (FOR TRAFFIC APPROACHING GUALALA DOWNTOWN).
 2. PLACE "YOUR SPEED" RADAR FEEDBACK SIGN SOUTH OF CENTER STREET.

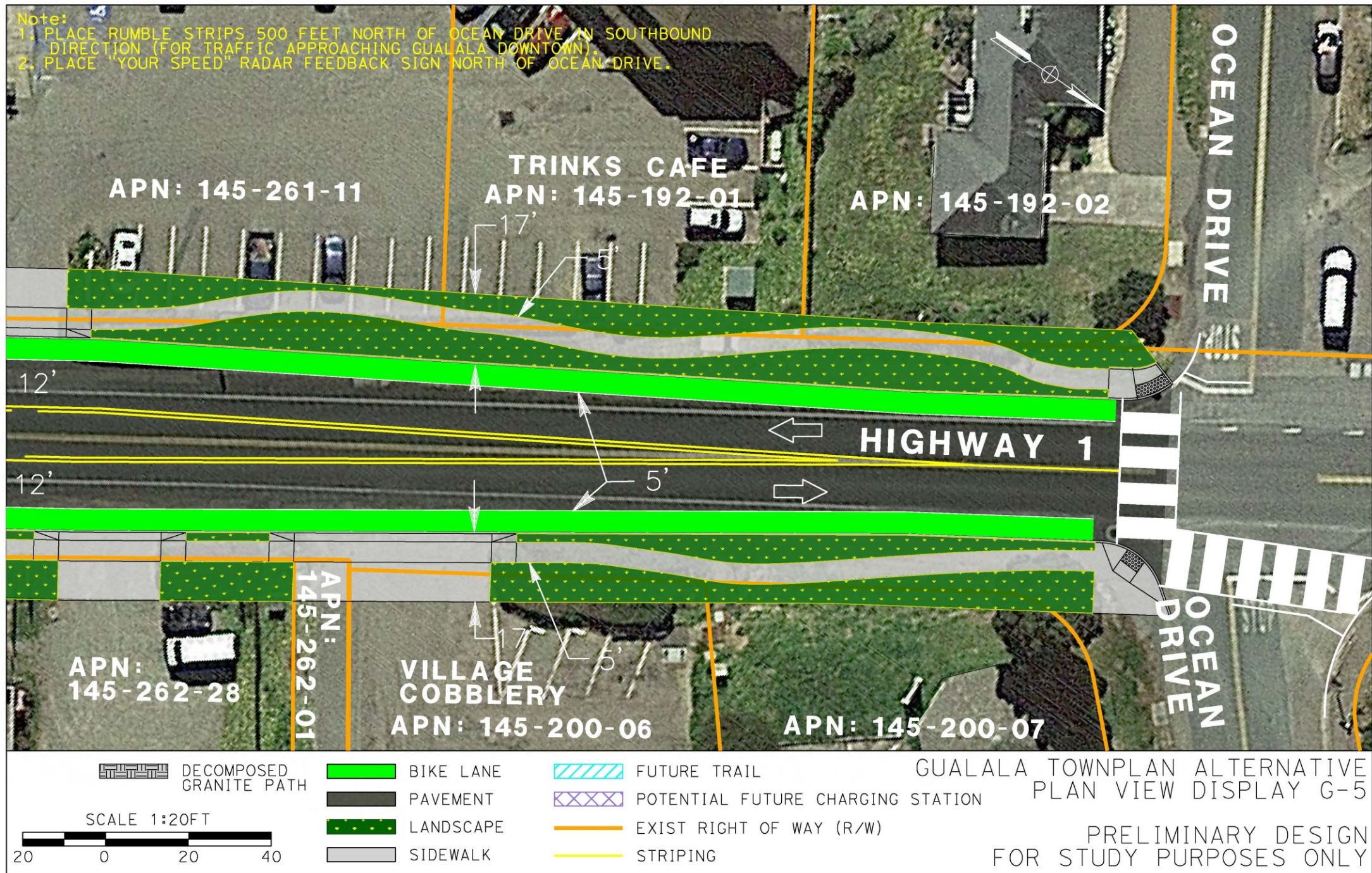








Note:
 1. PLACE RUMBLE STRIPS 500 FEET NORTH OF OCEAN DRIVE IN SOUTHBOUND DIRECTION (FOR TRAFFIC APPROACHING GUALALA DOWNTOWN).
 2. PLACE "YOUR SPEED" RADAR FEEDBACK SIGN NORTH OF OCEAN DRIVE.



New Project Alternatives

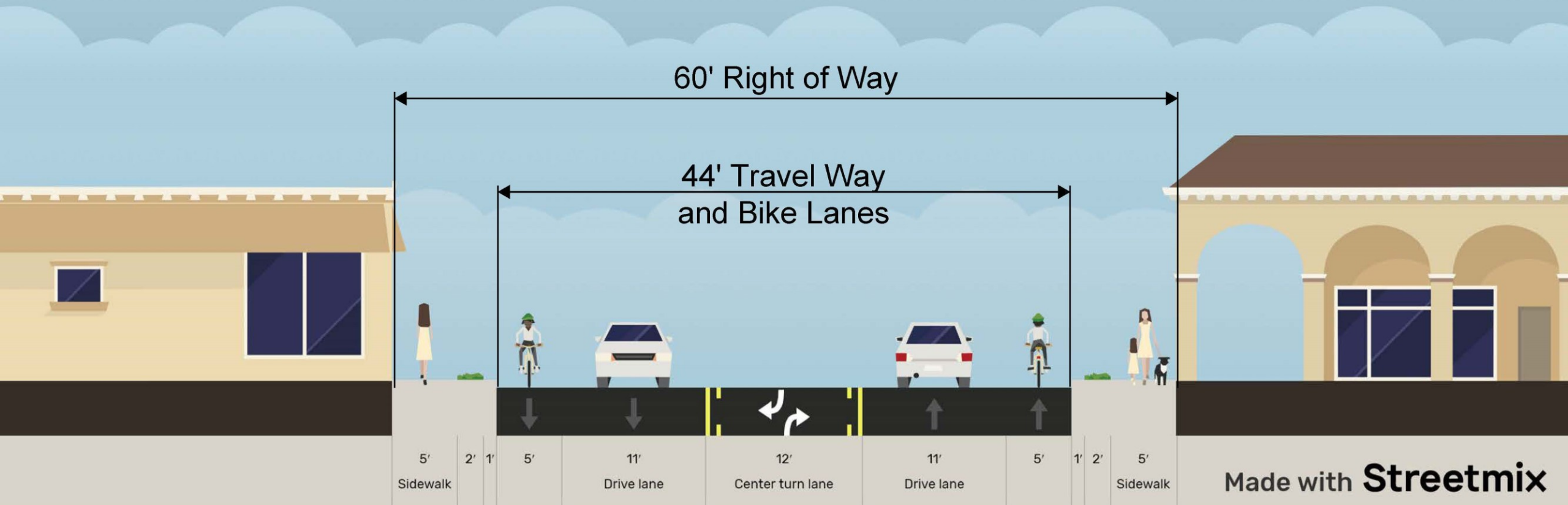
New Project Alternatives

Initial Construction Project, “Hybrid Center Turn Lanes with limited on-street parking”

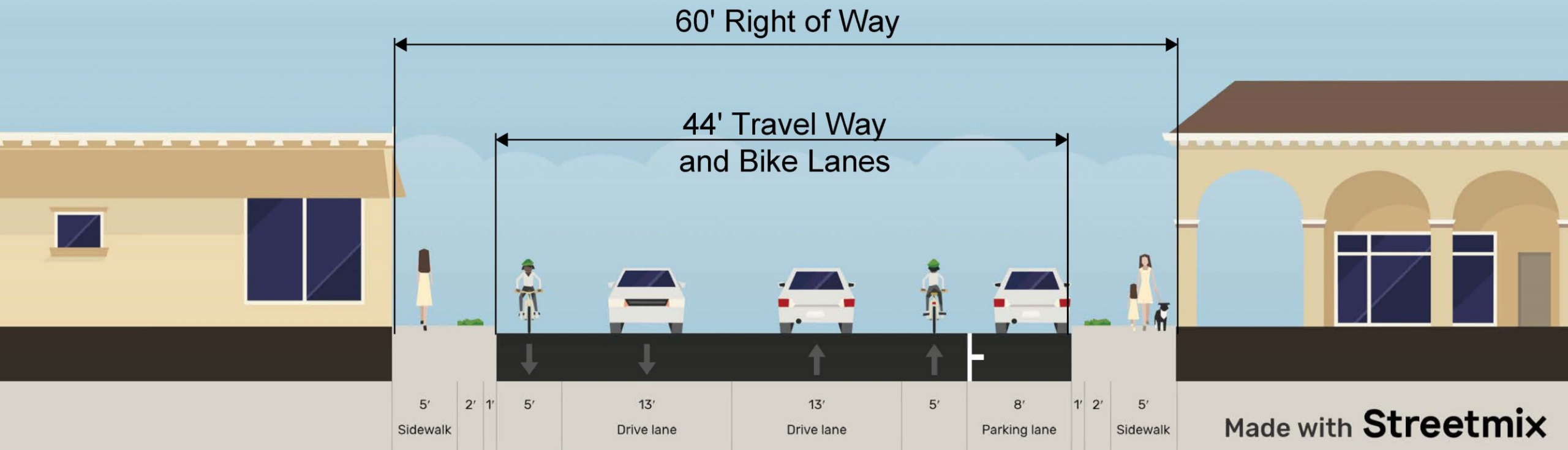
Alternatives 4A & 4B, Center turn lanes along the south part of town with parking along the east or west sides of SR-1 at the north end of town.

Project Alternative 4A

ALT 4A - CENTER ST. TO CHURCH ST.

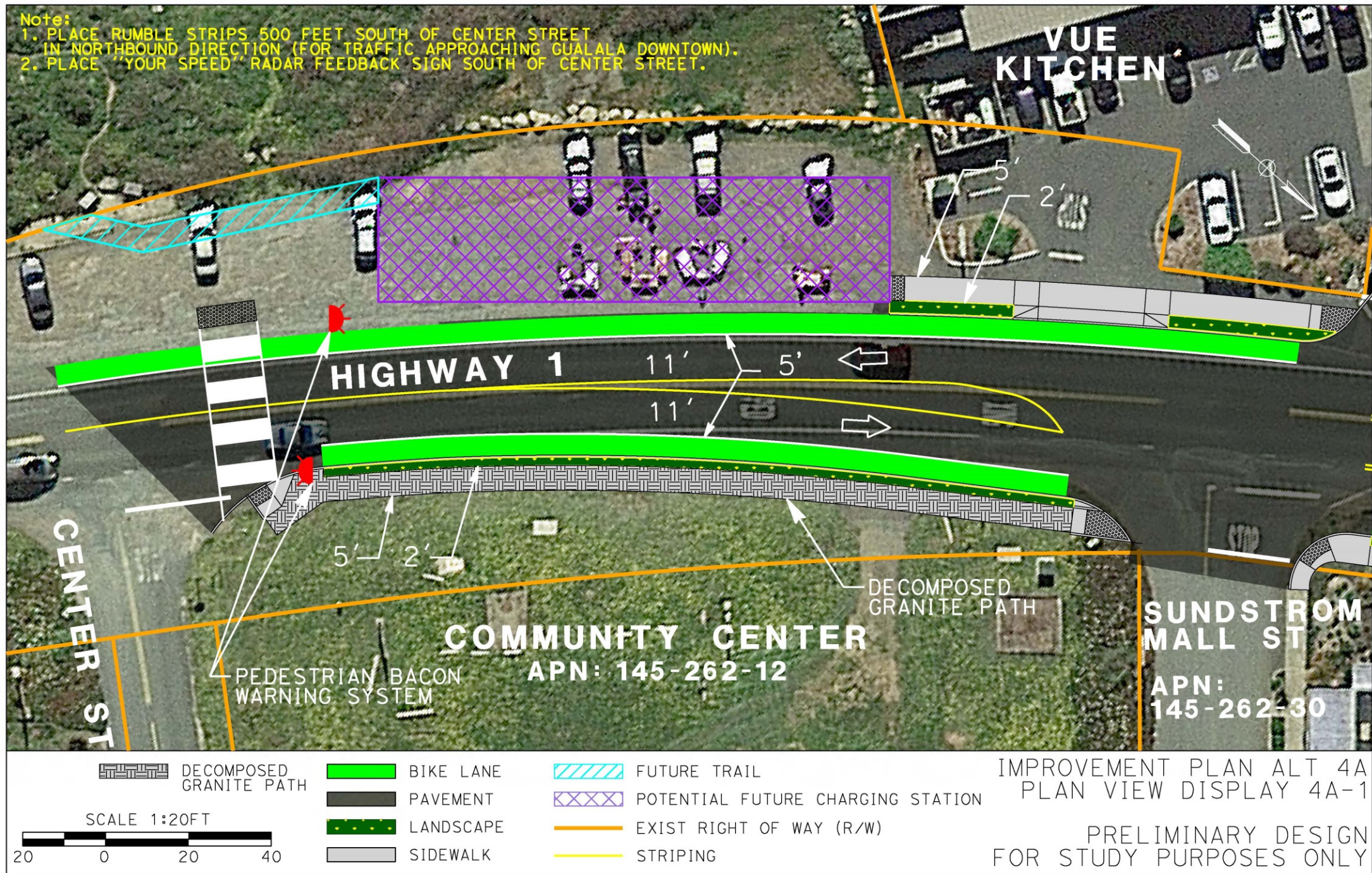


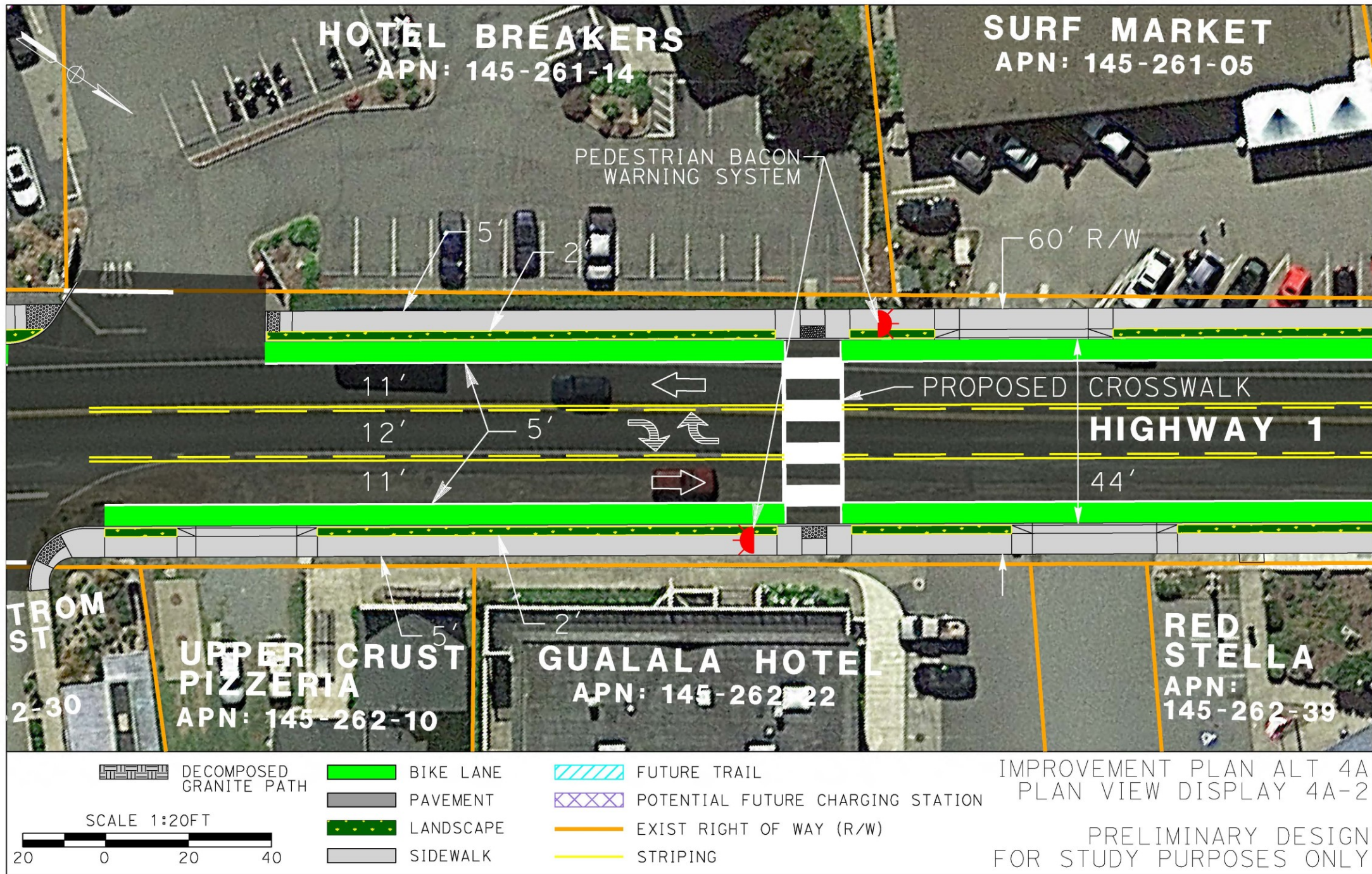
ALT 4A - CHURCH ST. TO OCEAN DR.

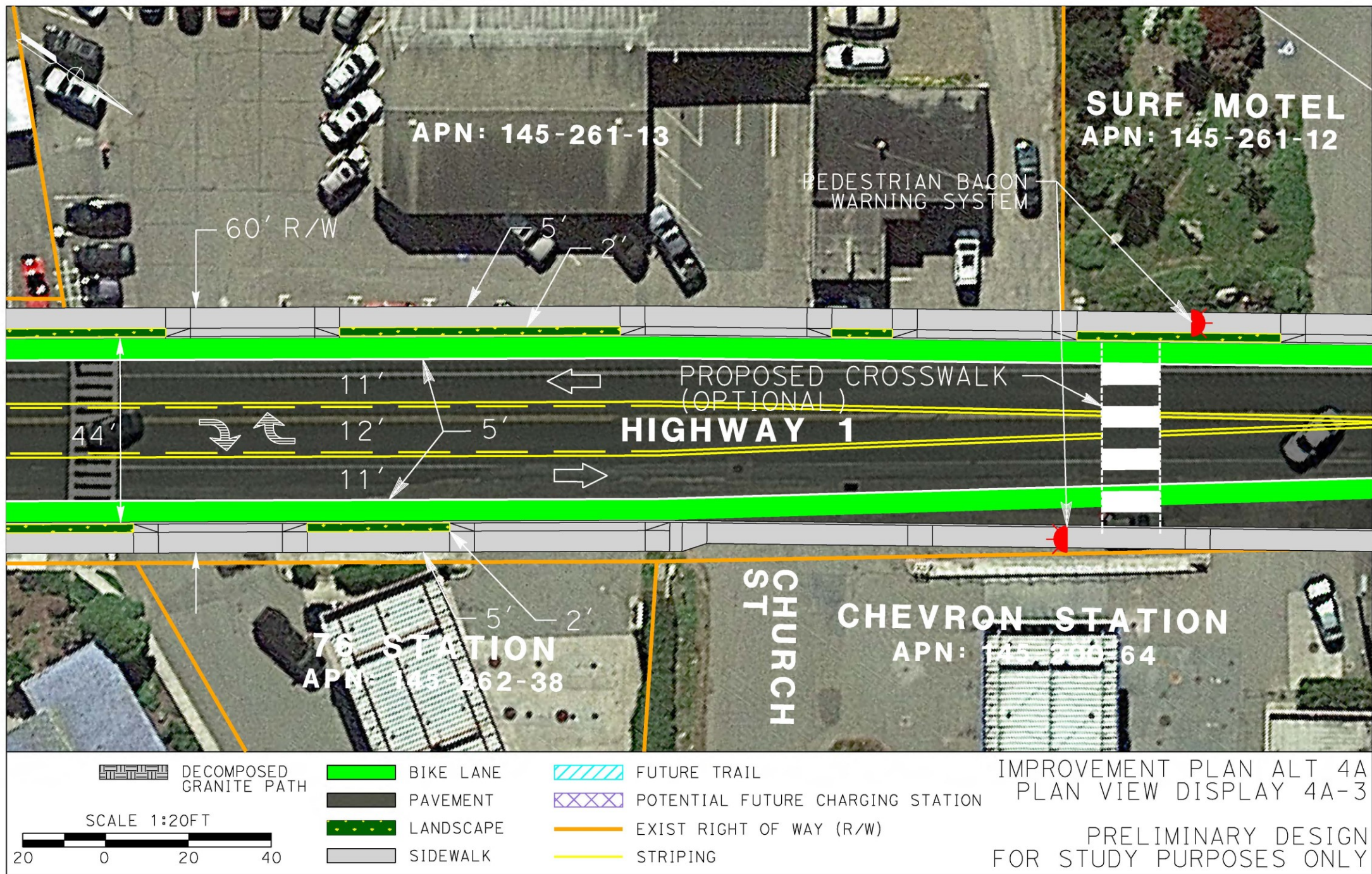


Notes:

1. PLACE RUMBLE STRIPS 500 FEET SOUTH OF CENTER STREET
IN NORTHBOUND DIRECTION (FOR TRAFFIC APPROACHING GUALALA DOWNTOWN).
2. PLACE "YOUR SPEED" RADAR FEEDBACK SIGN SOUTH OF CENTER STREET.

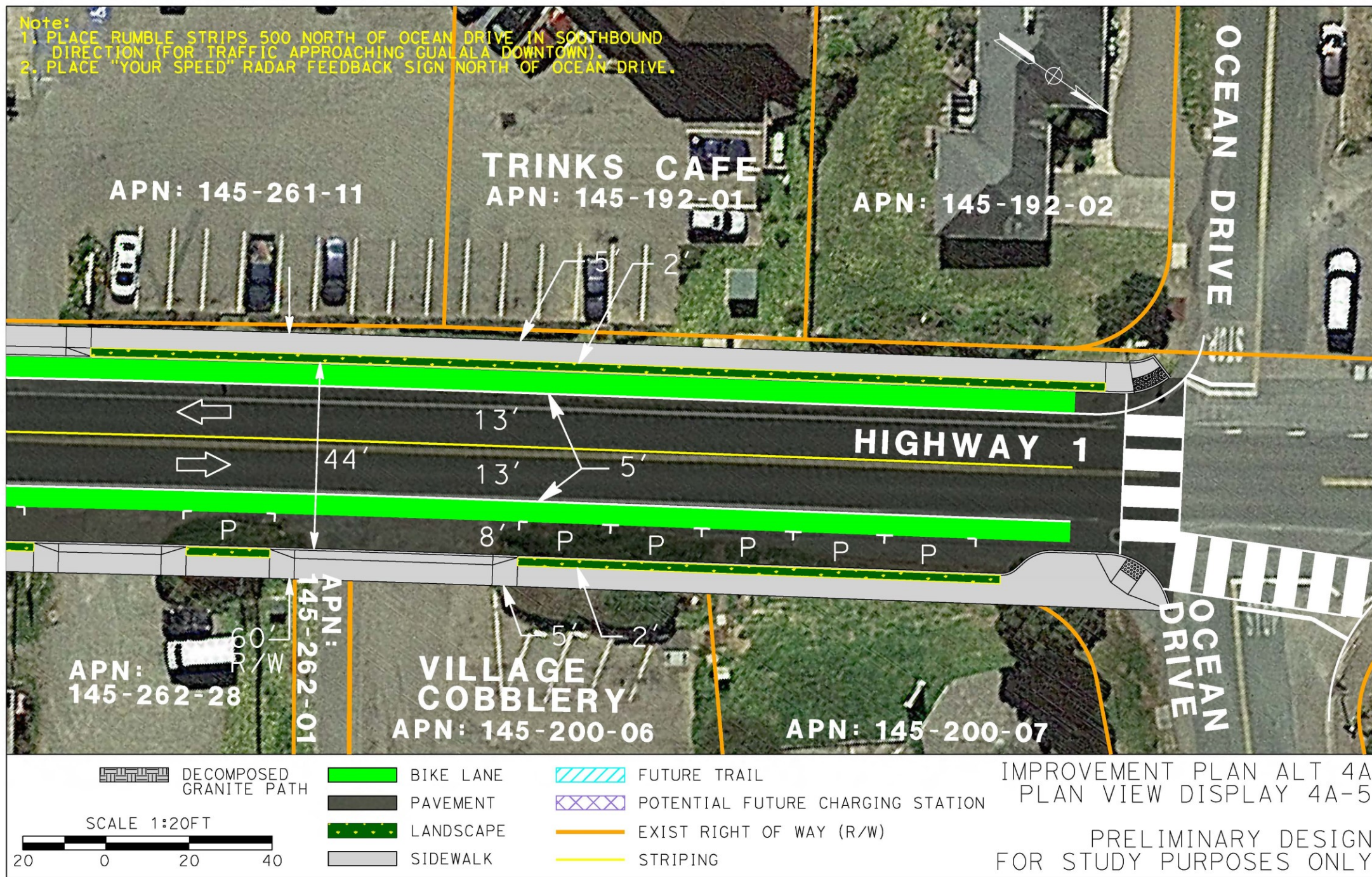






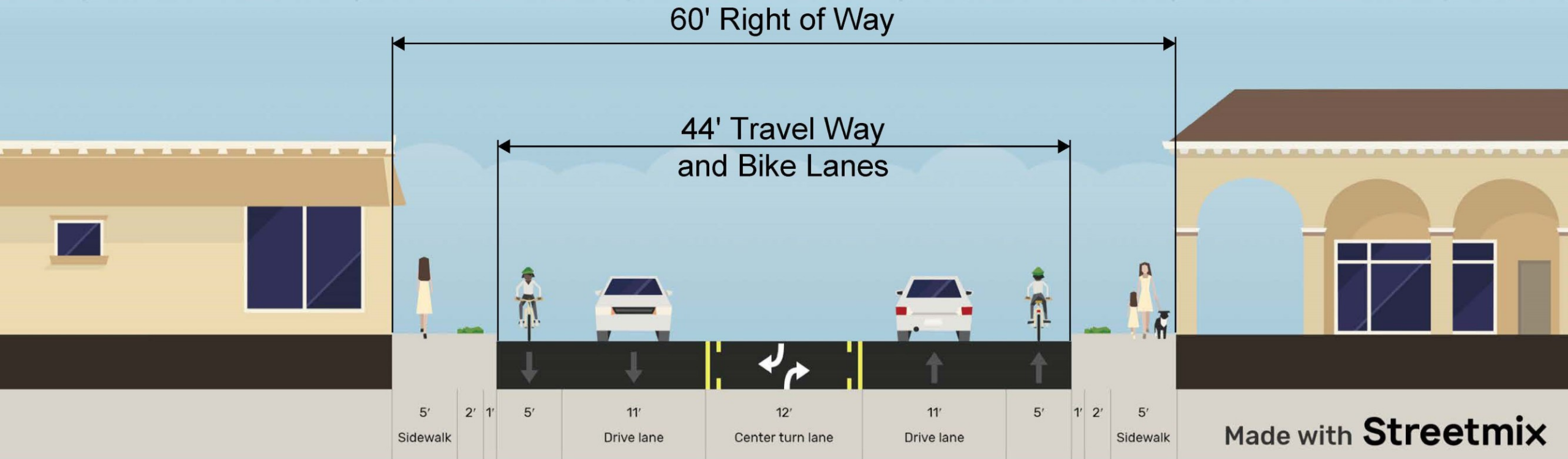
Note:

1. PLACE RUMBLE STRIPS 500 NORTH OF OCEAN DRIVE IN SOUTHBOUND DIRECTION (FOR TRAFFIC APPROACHING GUALALA DOWNTOWN).
2. PLACE "YOUR SPEED" RADAR FEEDBACK SIGN NORTH OF OCEAN DRIVE.

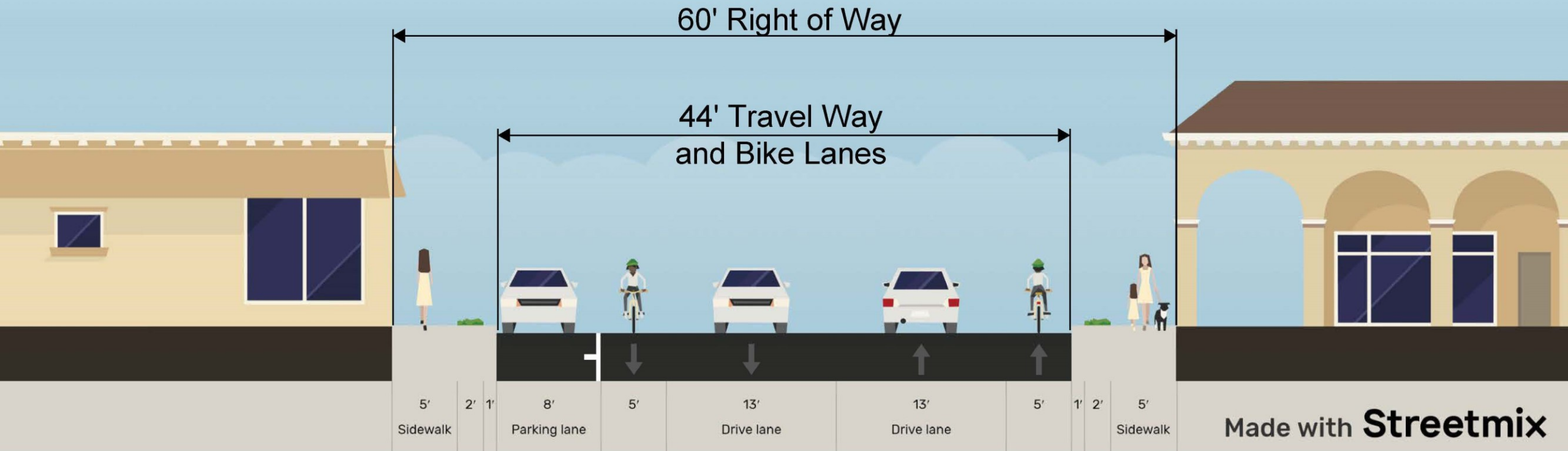


Project Alternative 4B

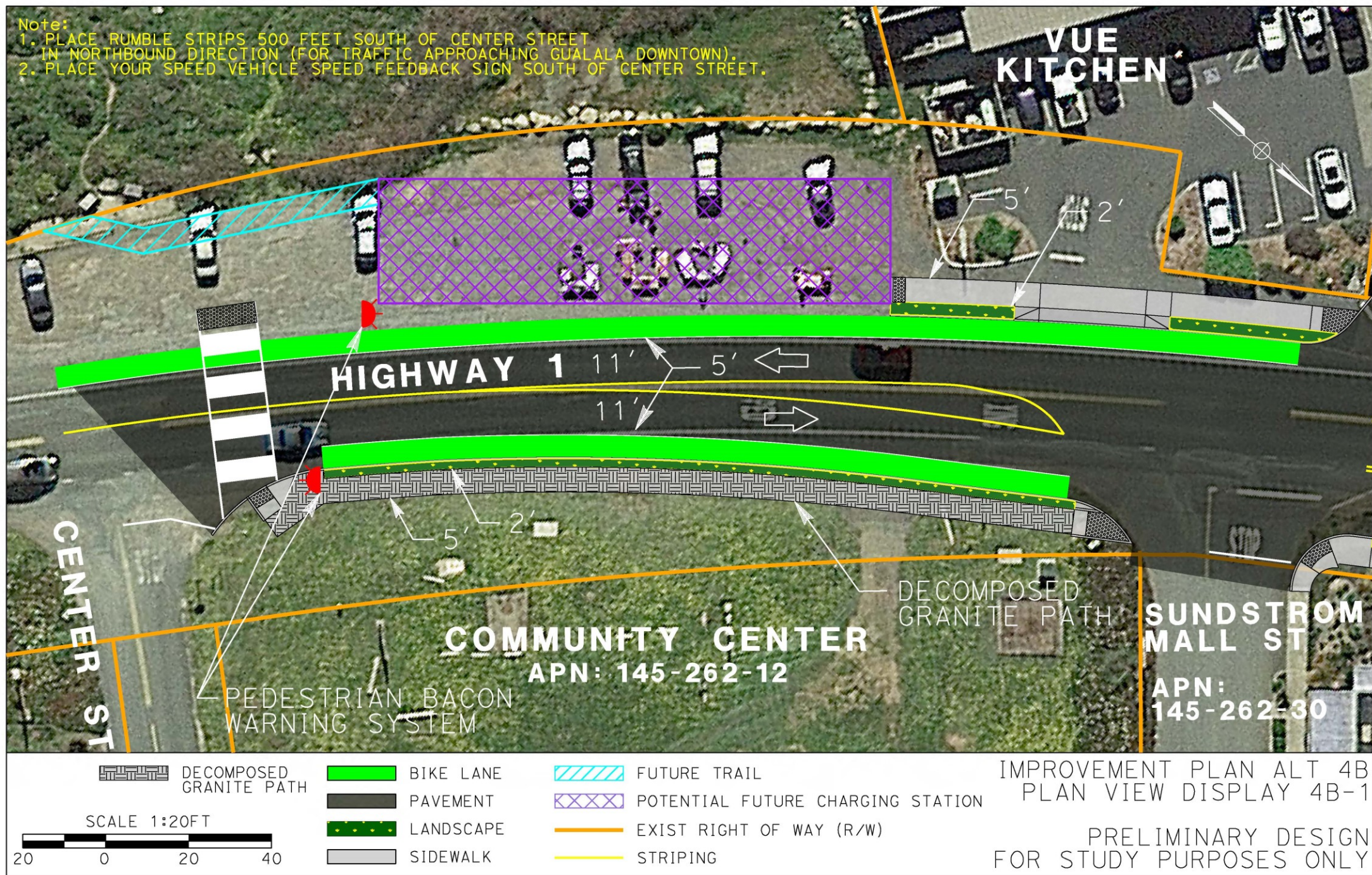
ALT 4B - CENTER ST. TO CHURCH ST.

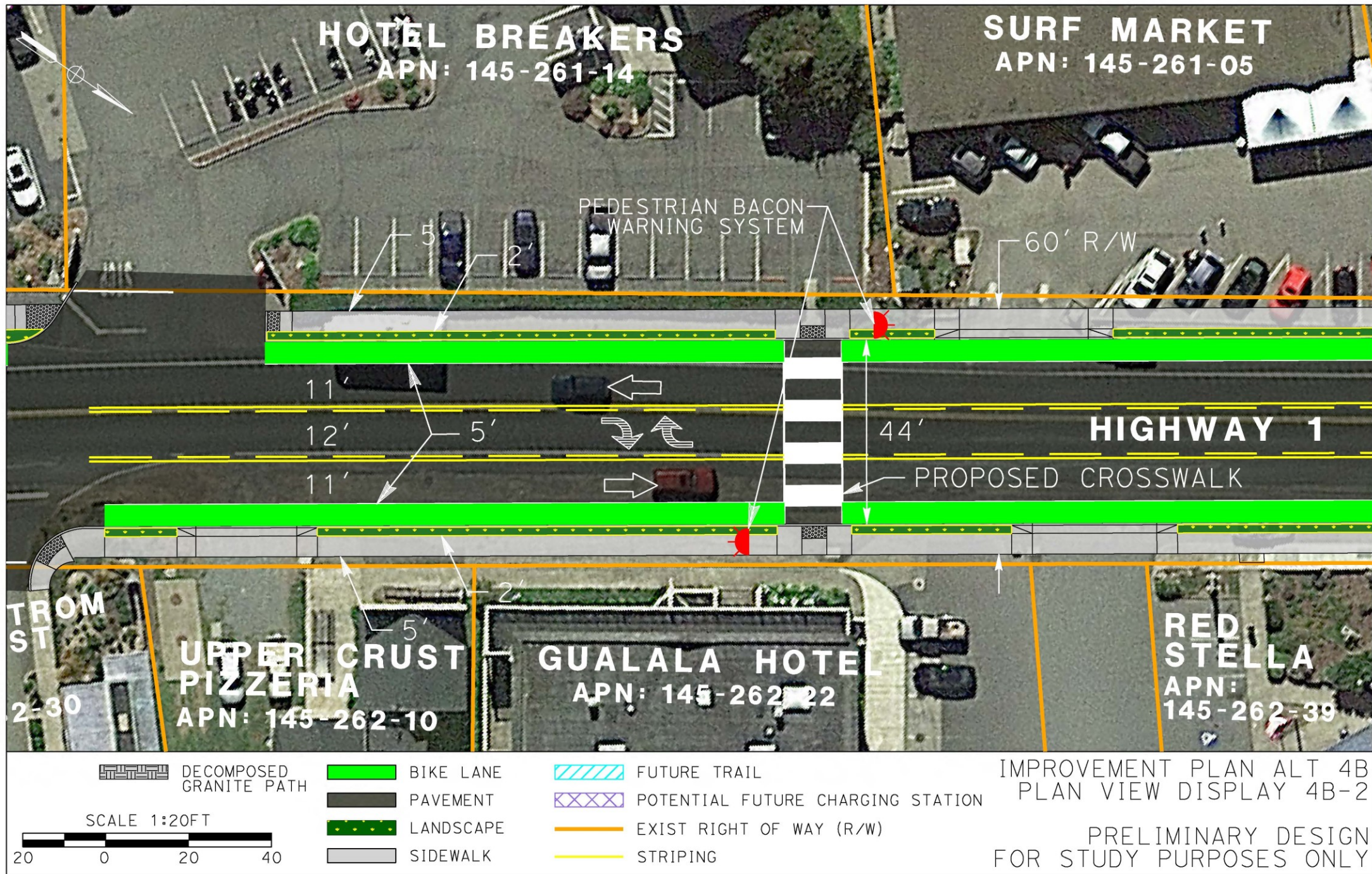


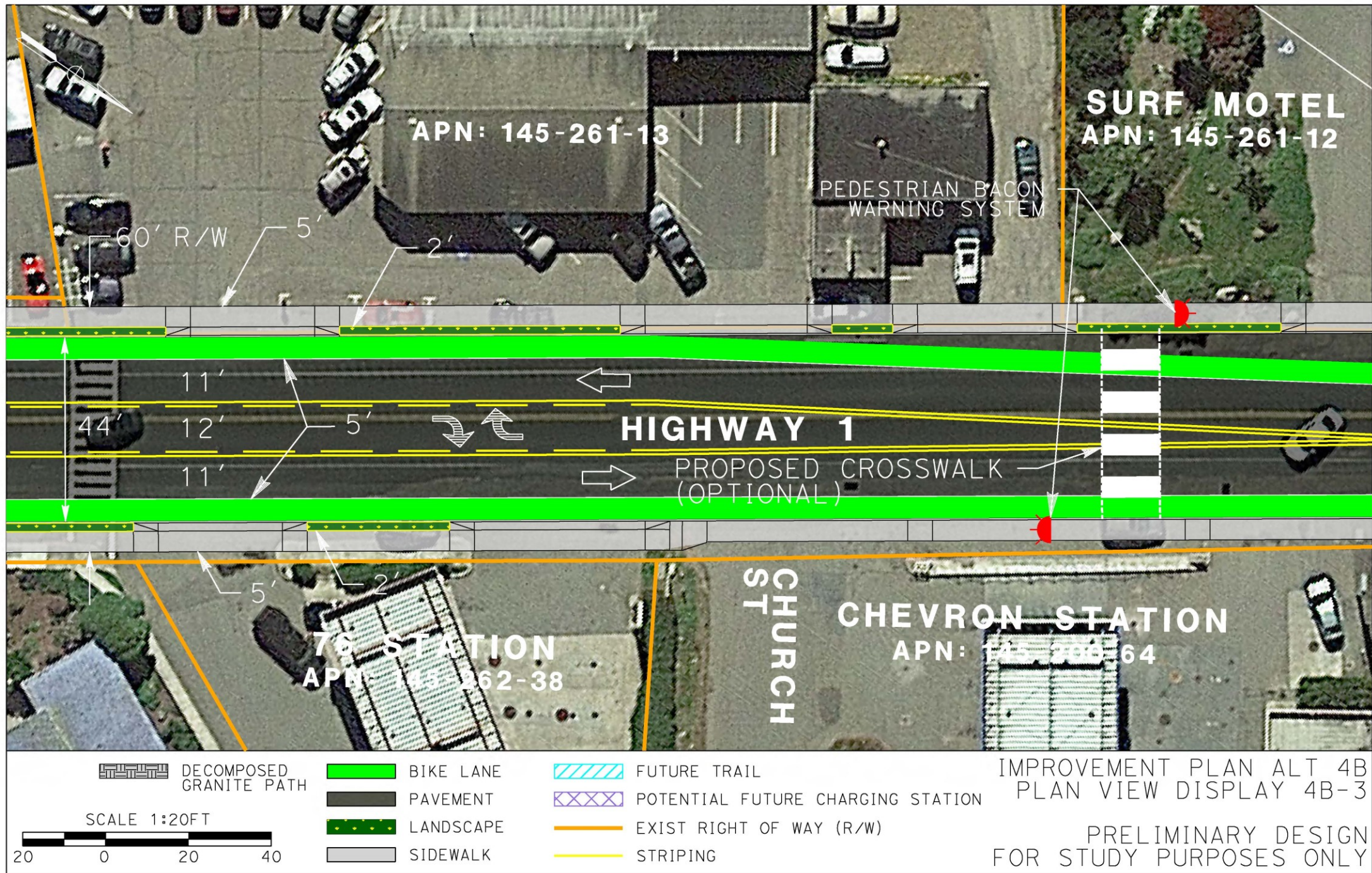
ALT 4B - CHURCH ST. TO OCEAN DR.

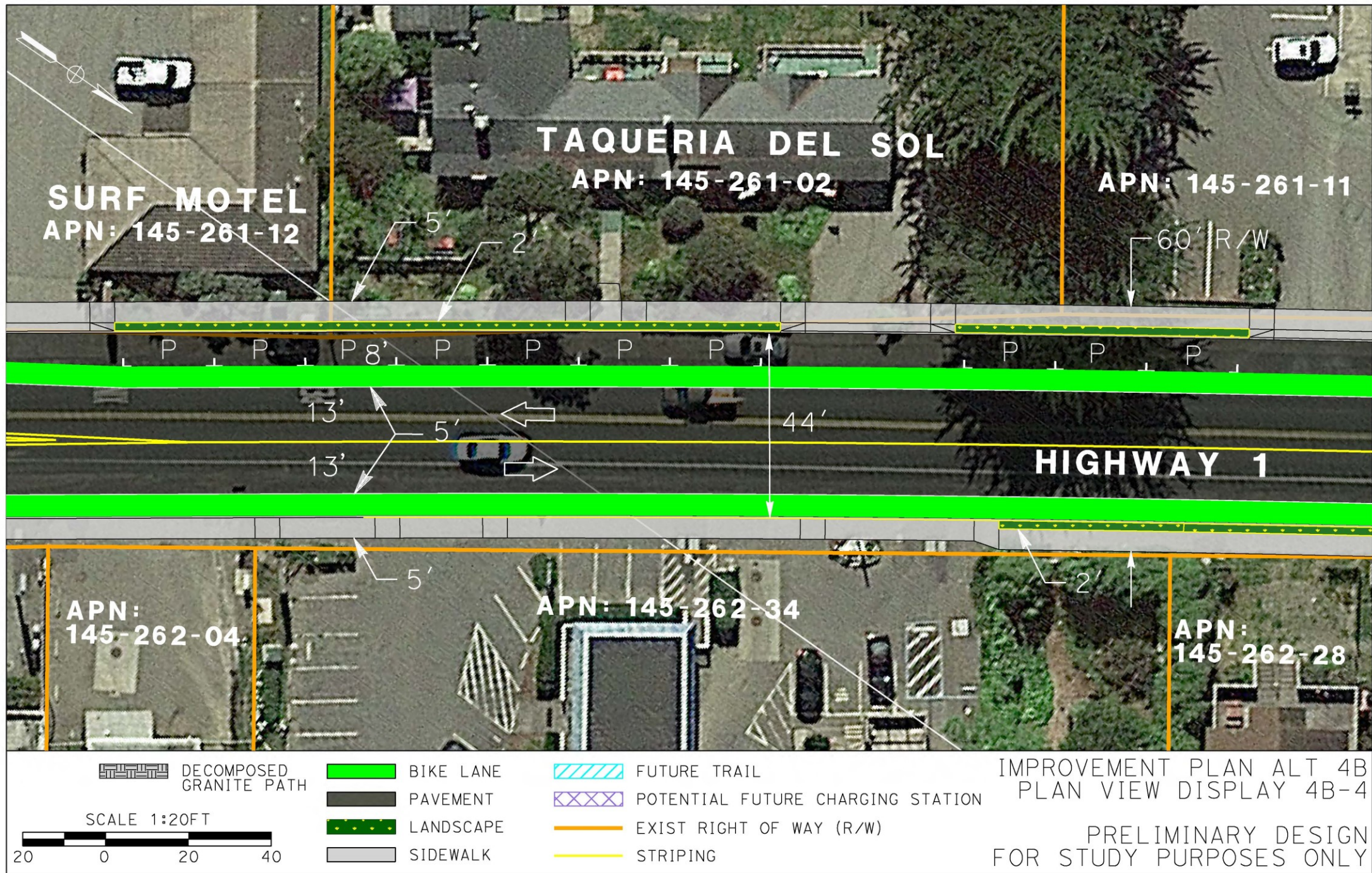


- Note:
1. PLACE RUMBLE STRIPS 500 FEET SOUTH OF CENTER STREET IN NORTHBOUND DIRECTION (FOR TRAFFIC APPROACHING GUALALA DOWNTOWN).
 2. PLACE YOUR SPEED VEHICLE SPEED FEEDBACK SIGN SOUTH OF CENTER STREET.

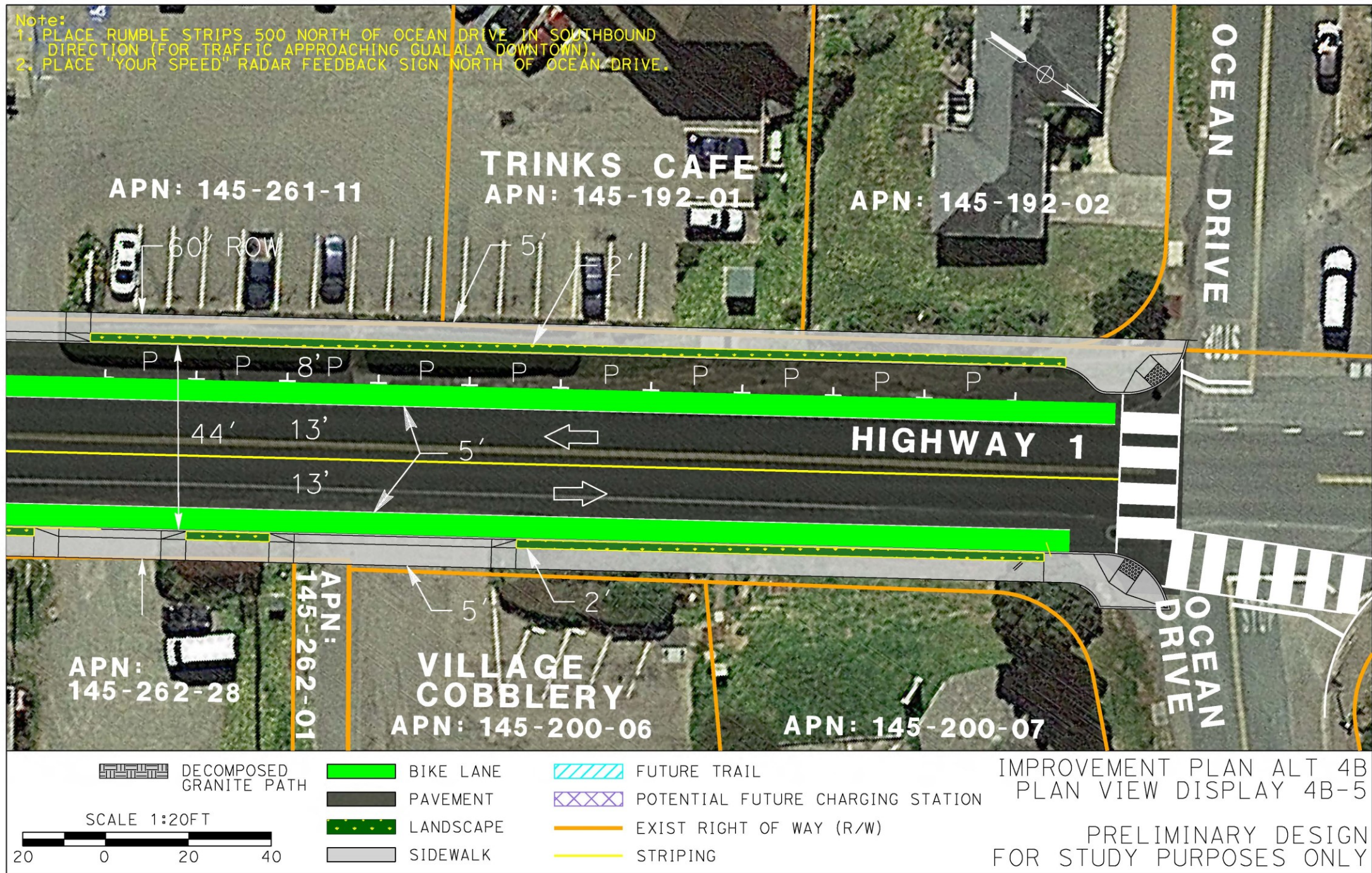








Note:
 1. PLACE RUMBLE STRIPS 500 NORTH OF OCEAN DRIVE IN SOUTHBOUND DIRECTION (FOR TRAFFIC APPROACHING GUALALA DOWNTOWN).
 2. PLACE "YOUR SPEED" RADAR FEEDBACK SIGN NORTH OF OCEAN DRIVE.



“No Build” Project Alternative

No improvements on SR-1 in Downtown Gualala

58



Public Comment

- **Online Survey - Open until January 29, 2021**

dot.ca.gov/gualaladowntown

- **Email**

gualaladowntown@dot.ca.gov

- **Mail**

Caltrans

Attn. Gualala Downtown Project

1656 Union Street

Eureka, CA 95501

- **Voice Mail**

707-441-5930

5 Minute Break

➡ Next, Q&A Session

Your Project Questions

- **Chat**

- We will be gathering like questions

- **Telephone**

- For those with out Internet access calling in...

Please use “*3” to raise hand to meeting facilitator

- **Questions outside of this meeting**

- Online survey
 - Email to gualaladowntown@dot.ca.gov

Questions & Answers



Thank You

dot.ca.gov/gualaladowntown