

DISTRICT 8

Maintenance Regions

2002

-  Regional Manager Headquarters
-  Adopted Route
-  Proposed Route
-  Traversable State Highways
-  Interstate Highway Shield
-  California State Highway Shield
-  U.S. Highway Shield
-  County Boundary
-  Lake / Bay / Delta
-  Park

MAINTENANCE FACILITY ABBREVIATIONS

- RMH - Regional Manager Headquarters
- AS - Area Superintendent
- HMS - Highway Maintenance Station
- LSMS - Landscape Maintenance Station
- SC - Special Crew Station
- S/SS - Sand/Salt Storage
- SL - Satellite

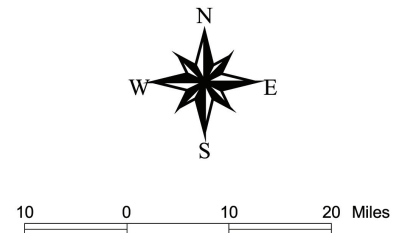
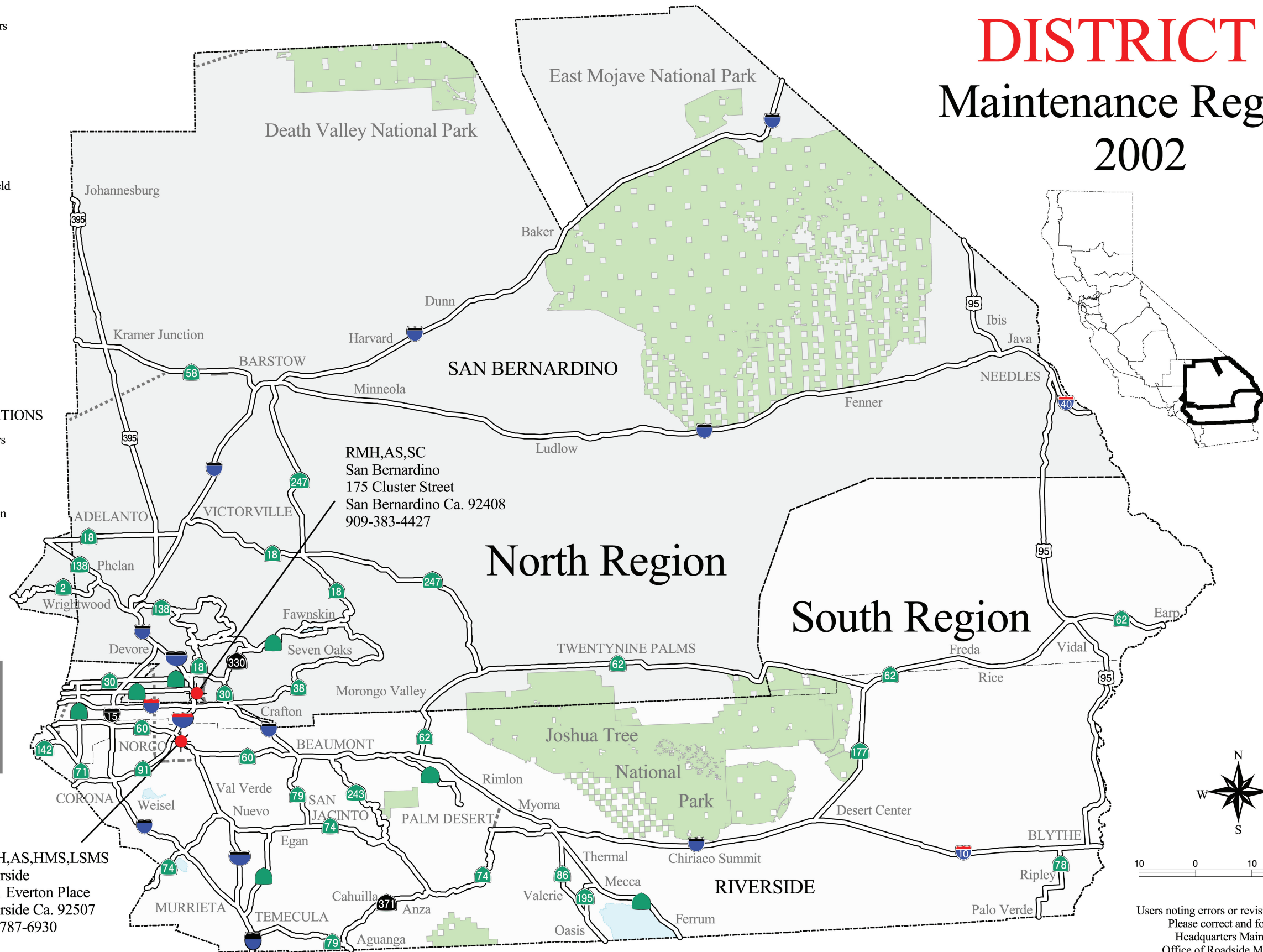
District 8 Office
 464 West 4th Street
 San Bernardino Ca. 92401-1400
 909-383-4416



State of California
 Department of Transportation
 Division of Maintenance GIS

RMH,AS,HMS,LSMS
 Riverside
 1091 Everton Place
 Riverside Ca. 92507
 909-787-6930

RMH,AS,SC
 San Bernardino
 175 Cluster Street
 San Bernardino Ca. 92408
 909-383-4427



Users noting errors or revisions on this map
 Please correct and forward to:
 Headquarters Maintenance
 Office of Roadside Maintenance