

SAN MATEO 101 EXPRESS LANES PROJECT



SEPTEMBER 2021

Institute for Sustainable Infrastructure ENVISION® Silver Award Recipient



Project Overview

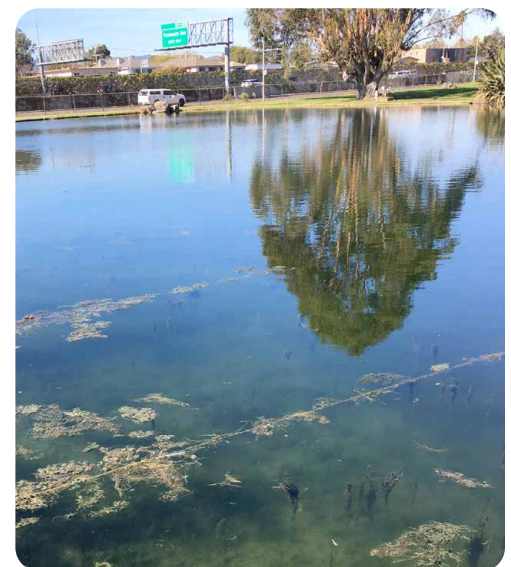
The California Department of Transportation (Caltrans), in partnership with the San Mateo County Transportation Authority and the City/County Association of Governments of San Mateo County, is currently constructing express lanes on U.S. 101 in San Mateo County. The existing high-occupancy vehicle lanes will be converted into express lanes from the Santa Clara County/San Mateo County line to Whipple Avenue. The San Mateo 101 Express Lanes Project (previously referred to as the U.S. 101 Managed Lanes Project) will ultimately create 22 miles of express lanes in both directions of U.S. 101 within San Mateo County and provide a seamless transition to the express lanes being constructed in Santa Clara County.

Caltrans and its partners performed a comprehensive sustainability evaluation of the Project using the Institute for Sustainable Infrastructure's ENVISION® framework. ENVISION® is a tool to assess and rate sustainability, resiliency, and equity in all types of civil infrastructure that features a third-party certification program. In May 2021, the Project earned an ENVISION® Silver Award in recognition of its commitment to sustainability. For more information visit sustainableinfrastructure.org/project-awards.



The Caltrans Bay Area Team is pleased to receive the ENVISION® Silver award for the US-101 Managed Lanes Project. The project represents the successful partnership of multiple state, regional and local agencies as well as the private industry to reduce traffic congestion, improve travel time reliability and promote mode shift, carpooling and transit for all users on a critical corridor linking the economic centers between San Francisco and Silicon Valley. This award demonstrates the commitment of our team, partners and contractors to delivering innovative improvements to advance air quality, climate goals and a sustainable and efficient transportation network.

~ Dina A. El-Tawansy, District Director, Caltrans District 4



Protected environmentally sensitive area adjacent to northbound U.S. 101



Project Achievements through Sustainable Strategies

Project Achievements

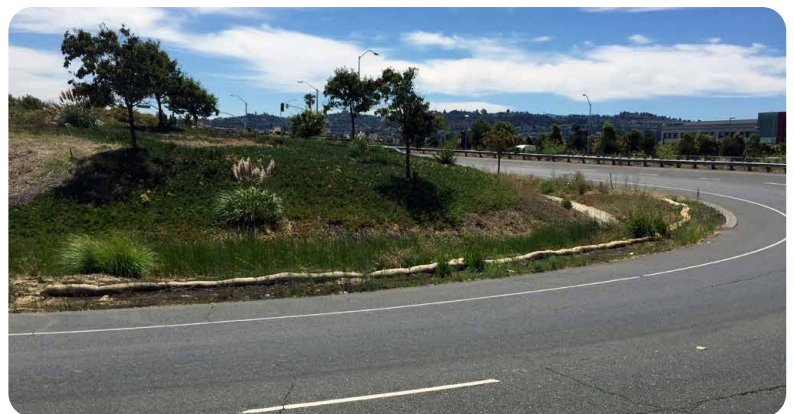
- ✓ **Reduced greenhouse gas emissions by 37,000 tons/year**
- ✓ **Reduced energy use by over 20% and minimized light pollution**
- ✓ **Reduced water use by 25%**
- ✓ **Recycled 100% of removed asphalt**
- ✓ **Protected the San Francisco Bay**
- ✓ **Protected Biodiversity and Endangered Species**
- ✓ **Increased Economic Prosperity**
- ✓ **Built Community Consensus**
- ✓ **Delivered Sustainable Solutions**

Sustainable Strategies

- Encouraging carpooling and transit use and funding trails and open space projects.
- Installing high-efficiency BUG-rated lighting, high-visibility striping, and retroreflective sign panels.
- Planting native, drought-tolerant vegetation and installing smart irrigation controllers.
- Storing excavated materials on-site until they can be used for repaving.
- Installing 12 new large-scale trash capture devices and 70 stormwater treatment areas to keep trash and pollutants out of the Bay.
- Using Environmentally Sensitive Area (ESA) fencing, worker environmental awareness training, and biological monitoring to keep construction work out of biologically sensitive areas.
- Created 2,633 jobs, including 658 at small businesses and 368 at disadvantaged businesses in San Mateo County.
- Incorporating community and stakeholder feedback into project design and construction.
- Having a multidisciplinary and multiagency team encourage sustainable decision-making at every stage of the project.



Recreation area adjacent to U.S. 101



Bioswale near roadway