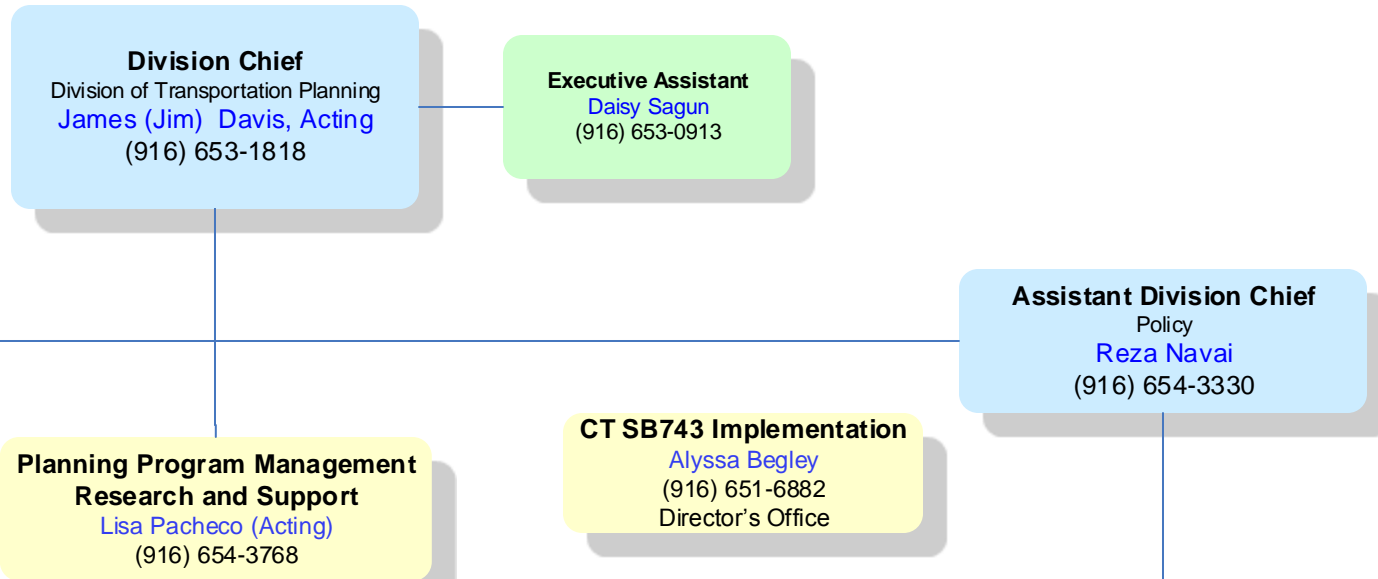




# Division of Transportation Planning

February 2017



**Freight Planning**  
Rahul Srivastava  
(916) 651-6008

- ❖ California Freight Mobility Plan
- ❖ California Sustainable Freight Action Plan
- ❖ California State Rail Plan – Freight Element
- ❖ Freight Investment Plan
- ❖ National Multimodal Freight Network
- ❖ Freight Performance Measures
- ❖ California Freight Advisory Committee
- ❖ Freight Efficiency Strategies Development Group
- ❖ Freight Research and Corridor Coalitions
- ❖ Geographic Information System Support
- ❖ Critical Urban/Rural Freight Corridors

**Multimodal System Planning**  
Scott Sauer  
(916) 653-4680

- ❖ Sustainable Corridor Framework Plans
- ❖ California Bicycle and Pedestrian Plan
- ❖ Planning for Operations
- ❖ System Planning Guidelines
- ❖ Interregional Transportation Strategic Plan
- ❖ Relinquishment Assessment Report Guidance
- ❖ Commodity Based Freight Model
- ❖ Statewide Transportation Demand Model
- ❖ California Statewide Freight Forecasting Model
- ❖ Regional Travel Demand Modeling Support

**Special Projects**  
Mitchell Baker  
(916) 654-7125  
DOTP

- ❖ Special Studies and Assignments
- ❖ Statewide Park and Ride Task Force
- ❖ Division Liaison for Caltrans Sustainability Action Plan
- ❖ Sustainable Corridor Framework Pilot
- ❖ Highway Corridors for Alternative Fuel Vehicles
- ❖ ZEV Plan Implementation
- ❖ Intra and Interdepartmental Coordination

**Program & Project Planning**  
Annette Clark  
(916) 653-9072

- ❖ Project Initiation Document (PID) Program Management for SHOPP, STIP, and Local Funded PID Development
- ❖ Coordination with Project Delivery & Programming
- ❖ Planning to Programming Process Improvement
- ❖ Coordination with SHOPP/Asset Management
- ❖ PID Development Guidance – Project Development Procedures Manual
- ❖ Project Initiation Report SHOPP PID Pilot Program
- ❖ Caltrans Transportation Asset Management Plan (TAMP) Support

- ❖ Program Financial & Resource Management
- ❖ Administration / Business Operations
- ❖ State Planning & Research Program, Part I
- ❖ Transportation Planning Special Studies
- ❖ Planning Research Coordination
- ❖ Human Resources
- ❖ Space Management / Facilities
- ❖ Professional Development & Training
- ❖ Planner Series Exams
- ❖ Hiring & Recruiting
- ❖ Planning Horizons
- ❖ Succession Planning
- ❖ Transportation Planning Academy
- ❖ Transportation Field Academy
- ❖ Transportation Planning Rotation Program
- ❖ Conference Planning
- ❖ Multimedia / Communications

**State Planning**  
VACANT

- ❖ California Transportation Plan (CTP)
- ❖ CTP Public Participation Program
- ❖ Modal and Program Integration
- ❖ Statewide Transportation Project Inventory (STPI)
- ❖ Economic Impact Assessment
- ❖ Lifecycle Benefit-Cost / Financial Analysis
- ❖ Legislative Analysis & Coordination
- ❖ Native American Liaison
- ❖ Native American Advisory Committee (NAAC)

**Smart Mobility and Climate Change**  
Tracey Frost  
(916) 654-8175

- ❖ Smart Mobility Framework
- ❖ Active Transportation / Livable Communities (ATLC)
- ❖ Complete Streets
- ❖ Climate Change Planning (GHG Reduction & Climate Adaptation)
- ❖ Transportation Energy & Alternative Fuels
- ❖ Local Development-Intergovernmental Review Program (LD-IGR)
- ❖ LD-IGR Geobased Tracking System (GTS)

**Regional Planning**  
Erin Thompson  
(916) 654-2596

- ❖ Oversight of Federal & State Planning Funds to MPOs / RTPAs
- ❖ Development of Regional Transportation Plan (RTP) Guidance
- ❖ Overall Work Program (OWP) Coordination with Federal and Regional Agencies
- ❖ Plan Level Air Quality Conformity Issues

- ❖ Transportation / Public Health Issues
- ❖ Transportation Planning Grant Program
- ❖ Planning / Environmental Linkages
- ❖ Public Engagement
- ❖ Context Sensitive Planning