

DIST	COUNTY	ROUTE	POST MILES TOTAL PROJECT	SHEET No.	TOTAL SHEETS
X	X	X	X	X	X

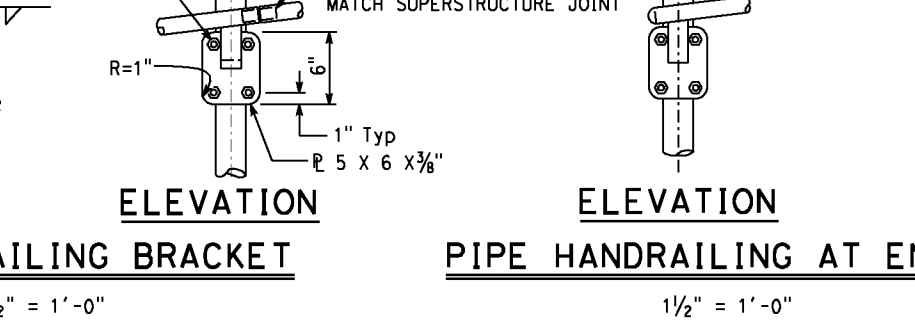
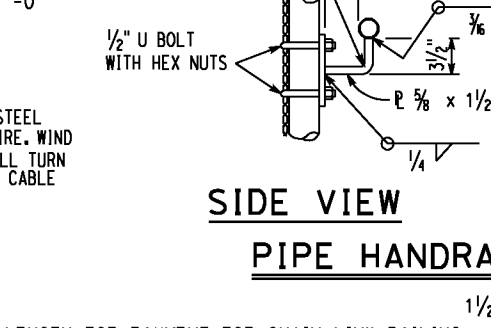
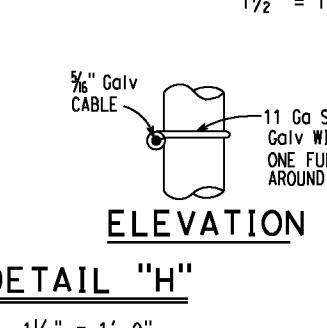
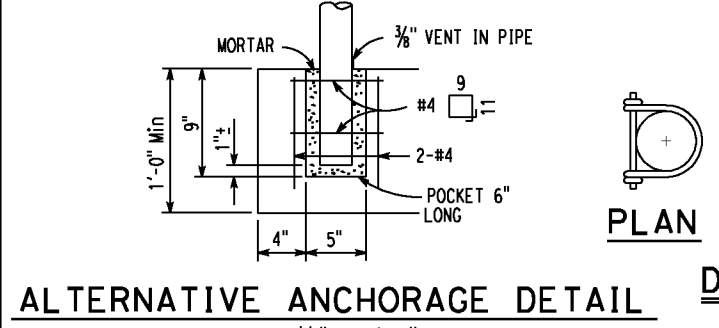
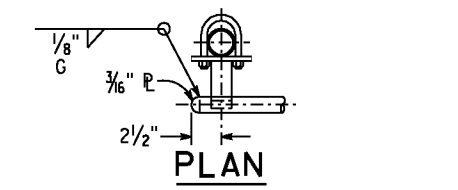
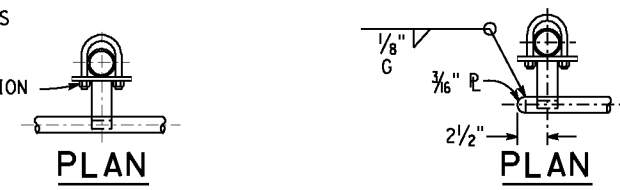
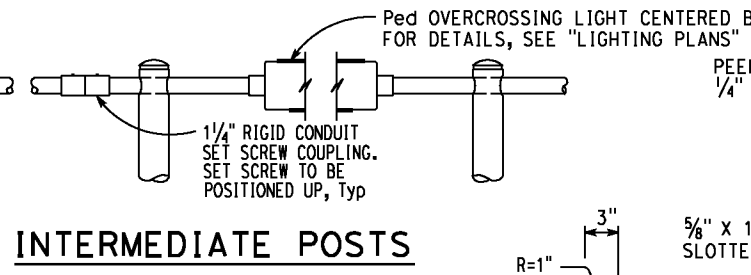
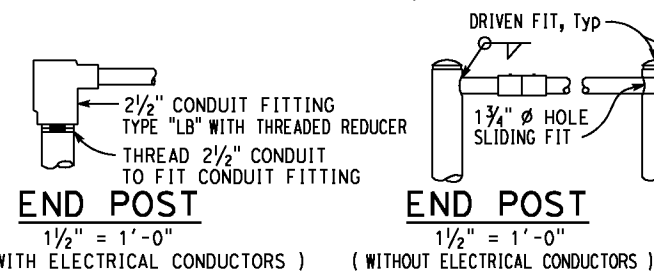
  

REGISTERED CIVIL ENGINEER	X	DATE
PLANS APPROVAL DATE		

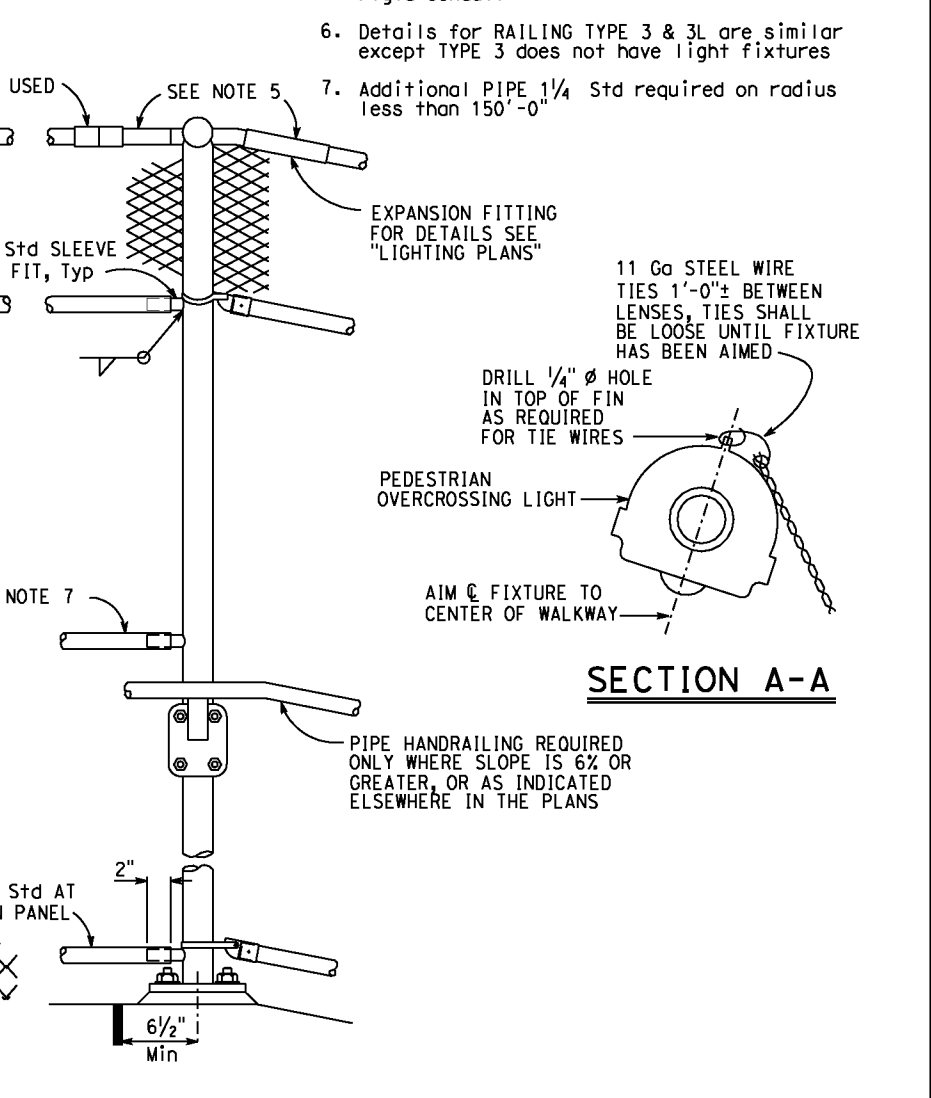
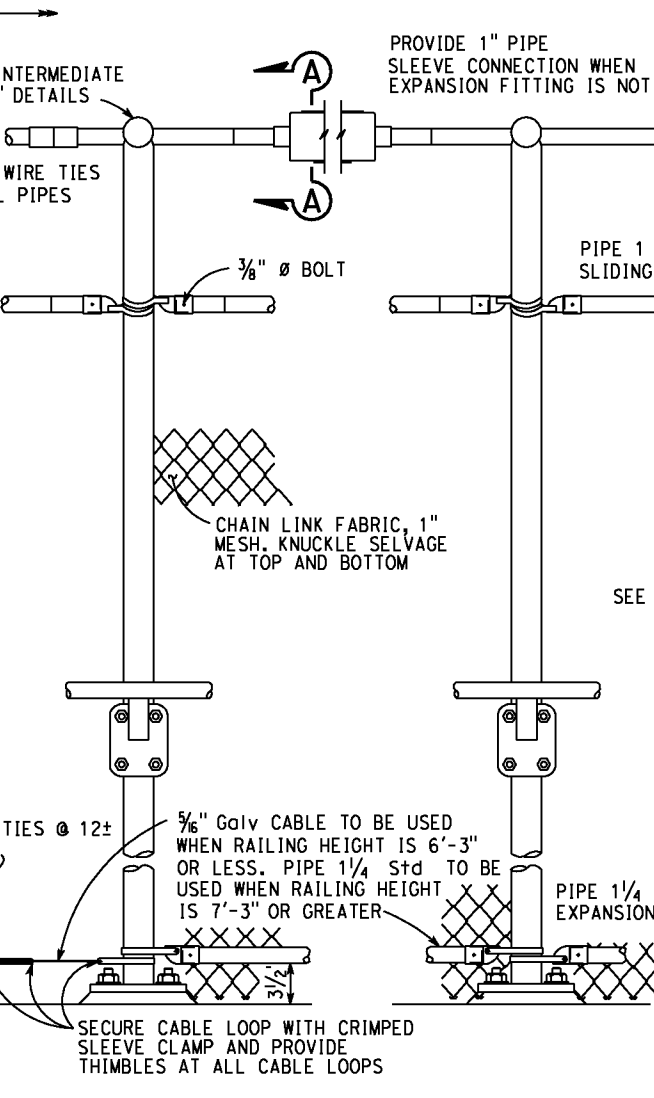
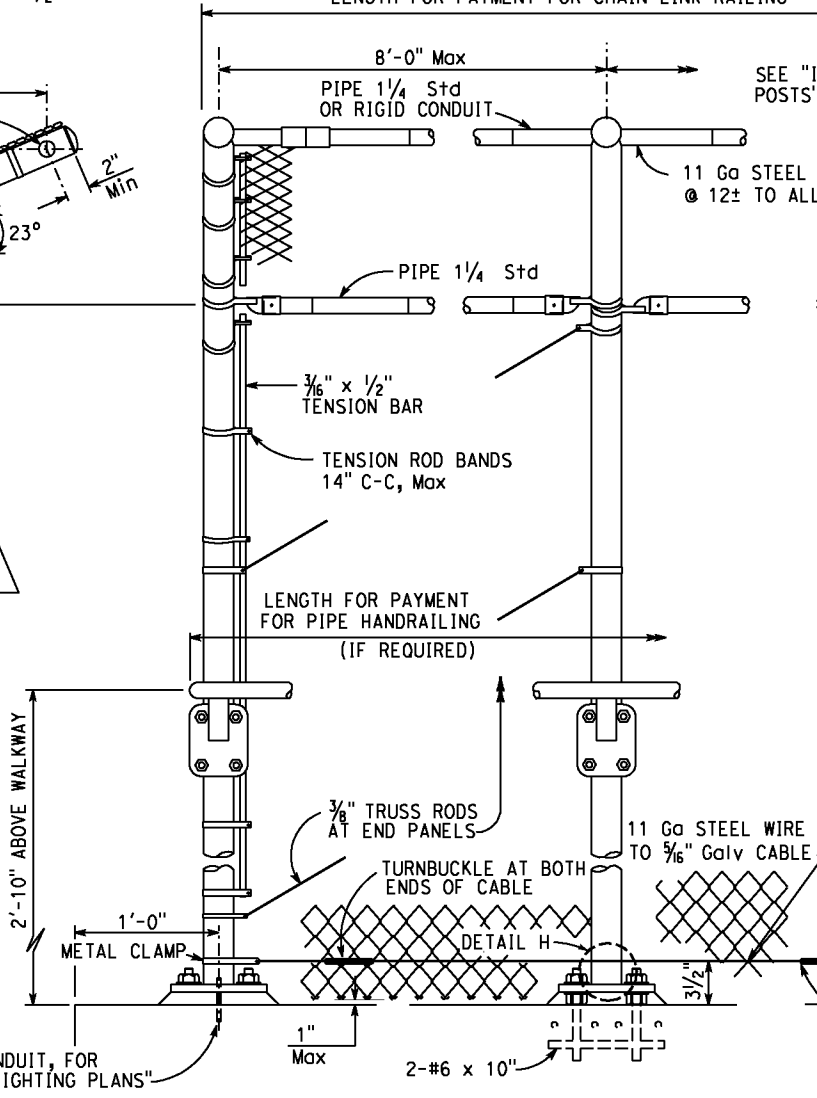
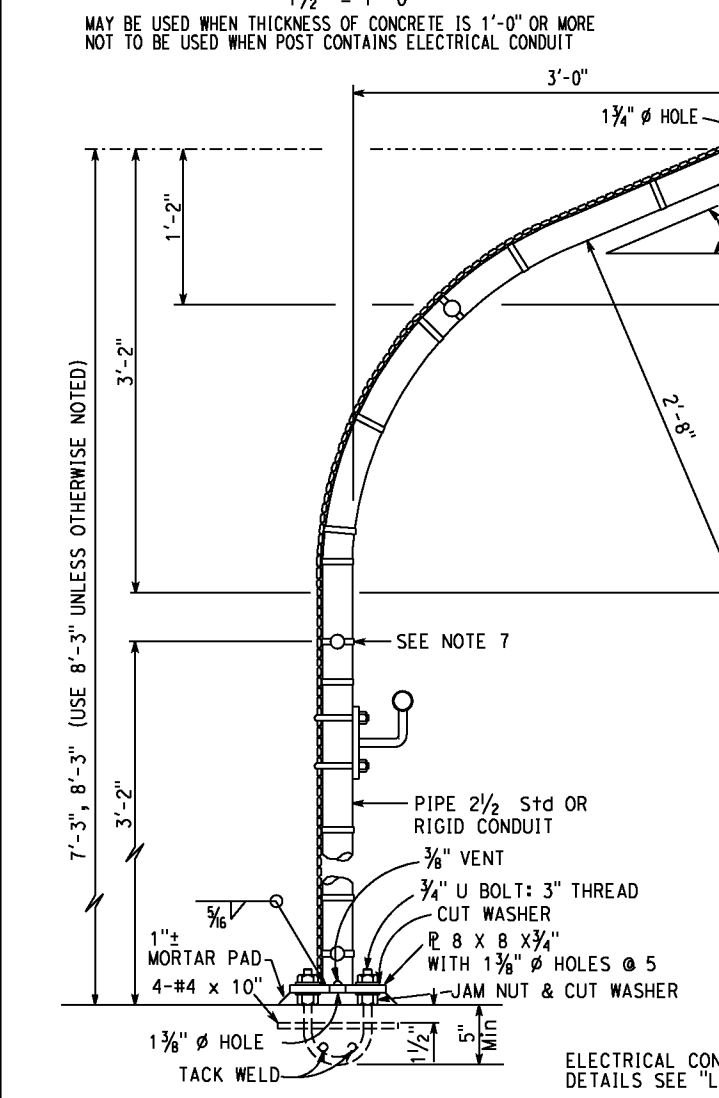
  

REGISTERED PROFESSIONAL ENGINEER	X
No.	X
Exp.	X
CIVIL	

*The State of California or its officers or agents shall not be responsible for the accuracy or completeness of electronic copies of this plan sheet.*



- NOTES:
- Railing shall conform to horizontal and vertical alignment. Posts shall be vertical. Horizontal pipes shall be bent if radius is 150'-0" or less. May be an 8'-0" chords if radius is over 150'-0"
  - Peen all 3/8" bolts
  - When railing is on slope, fabric shall be parallel to slope
  - Alternative details may be submitted by Contractor or Engineer's approval
  - All pipe carrying electrical conductors shall be rigid conduit
  - Details for RAILING TYPE 3 & 3L are similar except TYPE 3 does not have light fixtures
  - Additional PIPE 1/4 Std required on radius less than 150'-0"



**TYPICAL POST DETAIL**  
1/2" = 1'-0"

**END POST**  
1/2" = 1'-0"

**INTERMEDIATE POST**  
1/2" = 1'-0"

**EXPANSION JOINT**  
1/2" = 1'-0"

STANDARD DRAWING
FILE NO. <b>xs16-165</b>
APPROVAL DATE <b>July 2001</b>

STATE OF CALIFORNIA	DIVISION OF ENGINEERING SERVICES
DEPARTMENT OF TRANSPORTATION	BRIDGE NO. X
	POST MILE X

UNIT: X	CONTRACT NO.: X
PROJECT NUMBER & PHASE: X	

X	
<b>CHAIN LINK RAILING TYPE 3L</b>	
REVISION DATES	SHEET OF X X