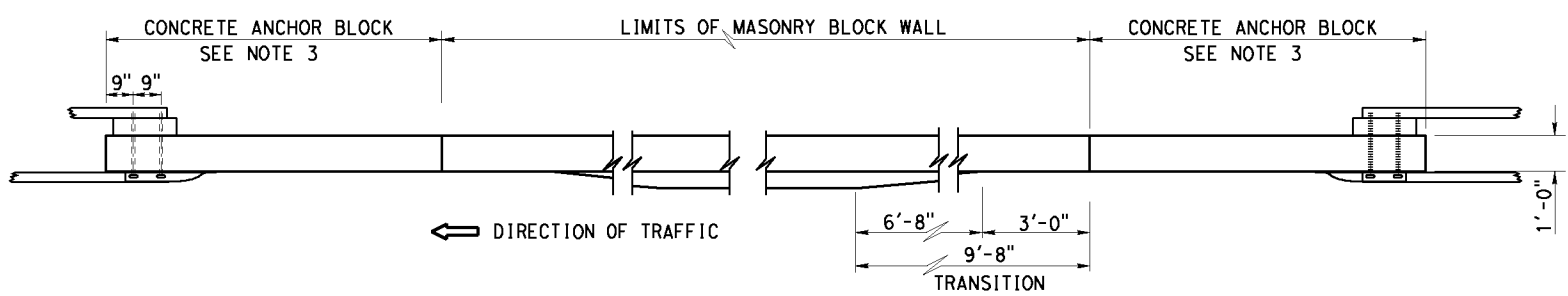


DIST	COUNTY	ROUTE	POST MILES TOTAL PROJECT	SHEET No.	TOTAL SHEETS
X	X	X	X	X	X

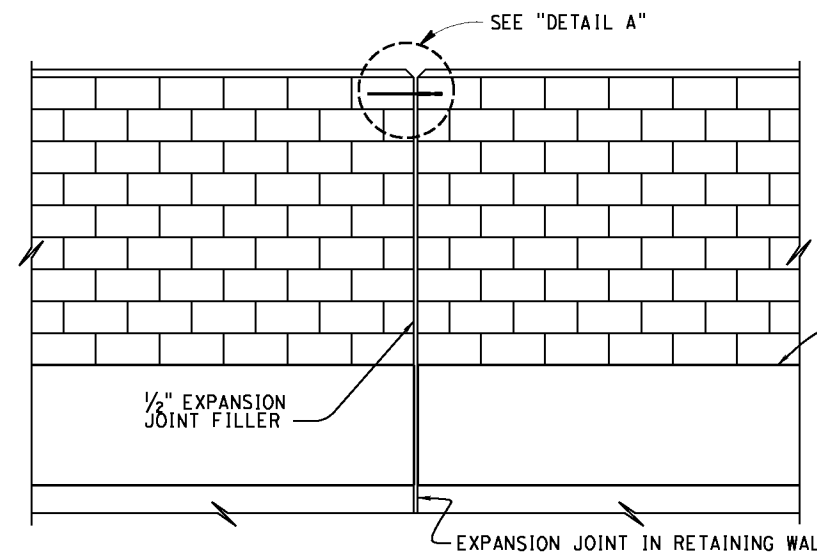
  

REGISTERED CIVIL ENGINEER	X	DATE	
PLANS APPROVAL DATE			

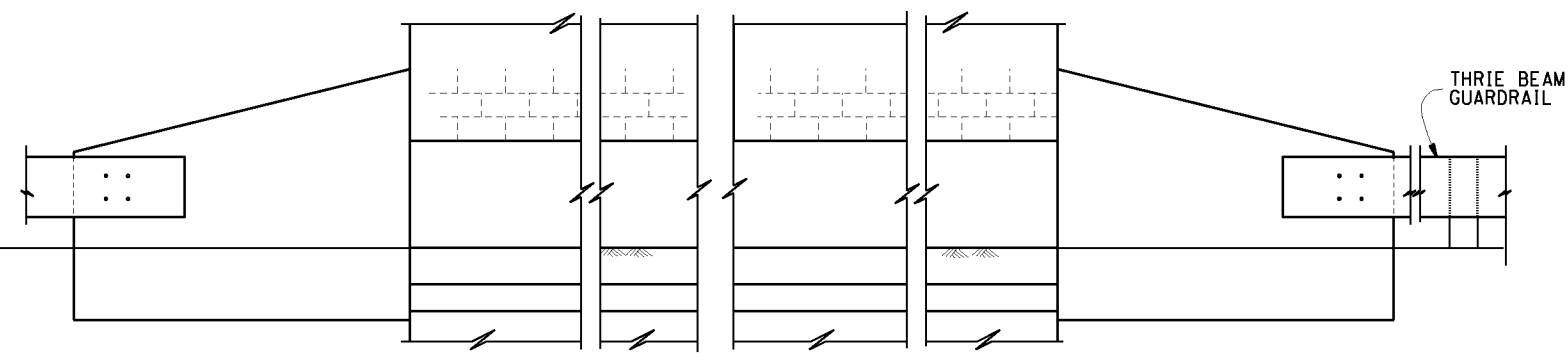
The State of California or its officers or agents shall not be responsible for the accuracy or completeness of electronic copies of this plan sheet.



**PLAN**



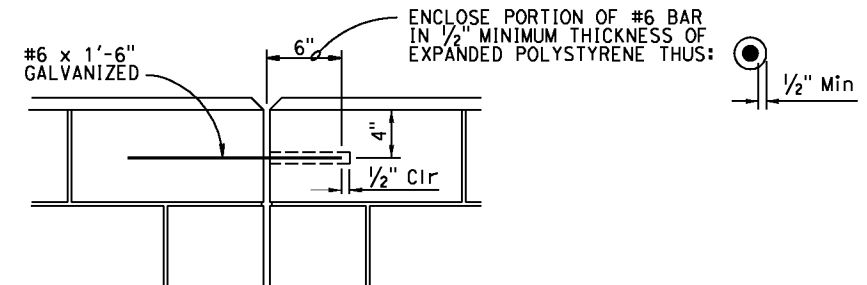
**ALIGNMENT KEY DETAIL**



**ELEVATION**

**METAL BEAM GUARDRAIL ANCHORAGE**

For details not shown, see STANDARD PLAN B11-56



**DETAIL A**

**DESIGN NOTES**

**DESIGN**  
Uniform Building Code, 1997 Edition and the Bridge Design Specifications

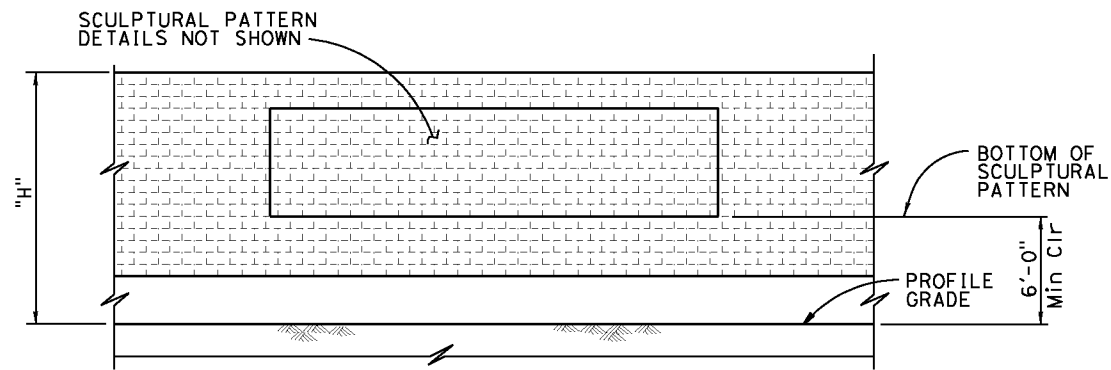
**DESIGN WIND LOAD**  
33 psf

**DESIGN SEISMIC LOAD**  
0.57 Dead load

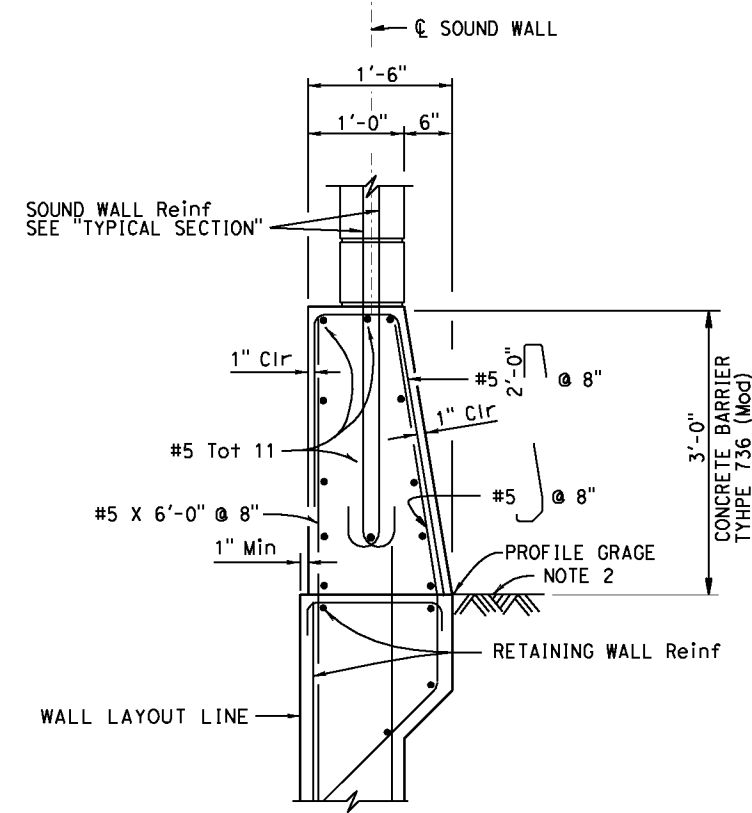
**CONCRETE MASONRY**

REINFORCED CONCRETE	REGULAR STRENGTH	HIGH STRENGTH	
f'c = 3600 psi	f'm = 1500 psi	f'm = 2000 psi	f'm = 2500 psi
fy = 60 ksi	fb = 495 psi	fb = 660 psi	fb = 830 psi
	fs = 24,000 psi	fs = 24,000 psi	fs = 24,000 psi
	n = 25.8	n = 19.3	n = 15.5

- NOTES:
- For details not shown, see STANDARD PLAN B15-6
  - Slope ground at traffic side of barrier to drain. Maximum slope ±10%. See STANDARD PLAN B11-56, Note D
  - For Concrete Anchor Block and connection details, see "CONNECTION DETAIL DD" on STANDARD PLAN A77J3



**CLEARANCE DETAIL**



**BARRIER SECTION**

NO SCALE

<b>X</b>	
<b>MASONRY BLOCK SOUND WALL W/BARRIER ON RETAINING WALL</b>	
<b>DETAILS NO. 2</b>	

<b>STANDARD DRAWING</b>	
FILE NO. <b>xs15-130-2</b>	APPROVAL DATE <u>July 2011</u>

<b>STATE OF CALIFORNIA</b> DEPARTMENT OF TRANSPORTATION	<b>DIVISION OF ENGINEERING SERVICES</b>	BRIDGE NO. X	<b>MASONRY BLOCK SOUND WALL W/BARRIER ON RETAINING WALL</b>
		POST MILE X	