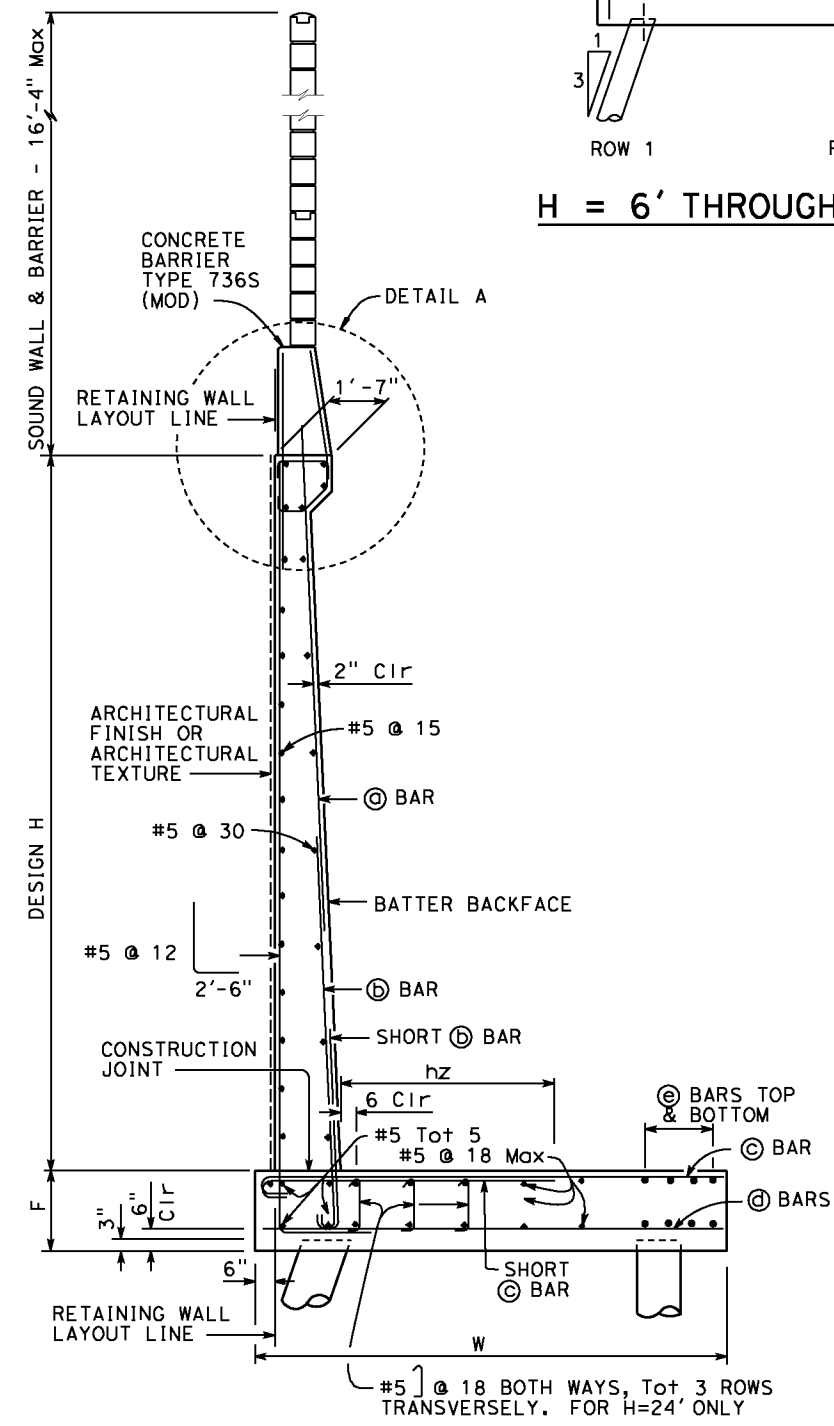


**PILE PATTERN**  
No scale

NOTES:

- All piles are class 90 concrete piles.
- Pile batter shown are 1:3.
- Minimum distance between center pile and edge of footing is 1'-6".
- Lateral resistance of each pile:  
30 kip for strength limit states.  
40 kip for extreme limit states.
- Maximum spacing between piles is shown in the table. Reduce to suit the length of footing.
- Minimum distance between any two piles is 3'-0". Reduce to suit the length of footing.
- For sound wall and retaining wall architectural finish or texture, see details elsewhere in Project Plans.
- For details not shown and drainage notes, see **B3-5**.
- Footing cover, 1'-6" minimum.
- For sound wall and Barrier reinforcements see "SOUND WALL - MASONRY BLOCK WITH BARRIER ON RETAINING WALL" sheets.
- For H=6' through 14', extend  $\odot$  bars into Barrier for stem with haunch.
- For H $\geq$ 16', extend  $\odot$  bars into Barrier for stem with haunch.



**PILE FOOTING SECTION**  
No scale  
All piles are not shown

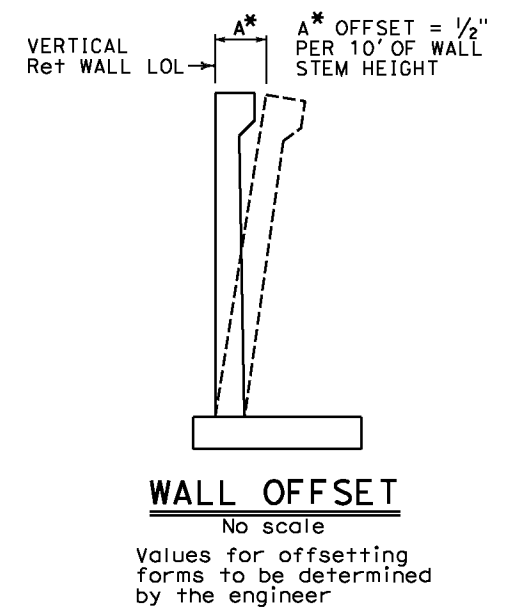


TABLE OF WALL DIMENSIONS, PILE SPACINGS AND REINFORCING STEEL										
DESIGN H	6'	8'	10'	12'	14'	16'	18'	20'	22'	24'
W	8'-9"	9'-0"	9'-3"	9'-9"	10'-3"	10'-9"	12'-0"	13'-0"	14'-6"	16'-0"
F PILE FOOTING	1'-6"	1'-6"	1'-6"	1'-6"	1'-9"	2'-0"	2'-0"	2'-6"	2'-9"	2'-9"
M	1'-0"	1'-0"	1'-0"	1'-0"	1'-0"	1'-0"	1'-0"	1'-0"	1'-0"	1'-0"
N	6'-9"	7'-0"	7'-3"	7'-9"	8'-3"	8'-9"	10'-0"	11'-0"	12'-6"	14'-0"
ROW 1 SPACING	8'-6"	7'-3"	6'-3"	5'-3"	4'-6"	3'-9"	3'-9"	3'-9"	3'-9"	3'-9"
ROW 2 SPACING	13'-6"	12'-0"	11'-6"	10'-3"	9'-3"	6'-6"	7'-0"	6'-0"	4'-0"	3'-9"
ROW 3 SPACING							7'-6"	6'-0"	5'-6"	5'-6"
ROW 4 SPACING										4'-6"
STEM WITH HUNCH, BATTER	0	1/2:12	1/2:12	1/2:12	1/2:12	1/2:12	1/2:12	1/2:12	1/2:12	5/8:12
STEM WITHOUT HUNCH, BATTER	0	0	0	0	0	0	0	0	1/4:12	1/4:12
$\odot$ BARS						#7@15	#7@12	#7@12	#8@12	#6@6
$\odot$ BARS	#8@12	#8@12	#7@6	#7@6	#7@6	#9@7.5	#9@6	#10@6	#10@6	#8@6 $\delta$
ha			5'-0"	6'-0"	7'-0"	7'-0"	6'-0"	7'-0"	7'-0"	7'-6"
hb						11'-6"	12'-0"	13'-3"	16'-0"	15'-6"
$\odot$ BARS	#6@6	#6@6	#7@6	#8@6	#9@6	#10@7.5	#8@6 $\delta$	#9@6 $\delta$	#9@6 $\delta$	#10@6 $\delta$
hz	3'-6"	3'-6"	3'-6"	4'-0"	4'-3"	7'-0"	4'-9"	5'-6"	6'-3"	7'-6"
$\odot$ BARS	#6@12	#5@12	#5@12	#5@12	#5@12	#5@15	#5@12	#5@12	#6@12	#5@12
$\odot$ BARS	8-#8@11	8-#7@11	8-#7@11	8-#7@13	8-#7@16	10-#5@15	8-#5@12	#5@18	#5@18	#5@18

NOTES:

- $\delta$  indicates 2 bar bundle.
- Total  $\odot$  bars are top and bottom combined.

STANDARD DRAWING  
FILE NO. **xs14-370-1**  
APPROVAL DATE July 2011

STATE OF CALIFORNIA  
DEPARTMENT OF TRANSPORTATION  
DIVISION OF ENGINEERING SERVICES

BRIDGE NO. X  
POST MILE X  
RETAINING WALL TYPE 5SWBP-DETAILS NO. 1